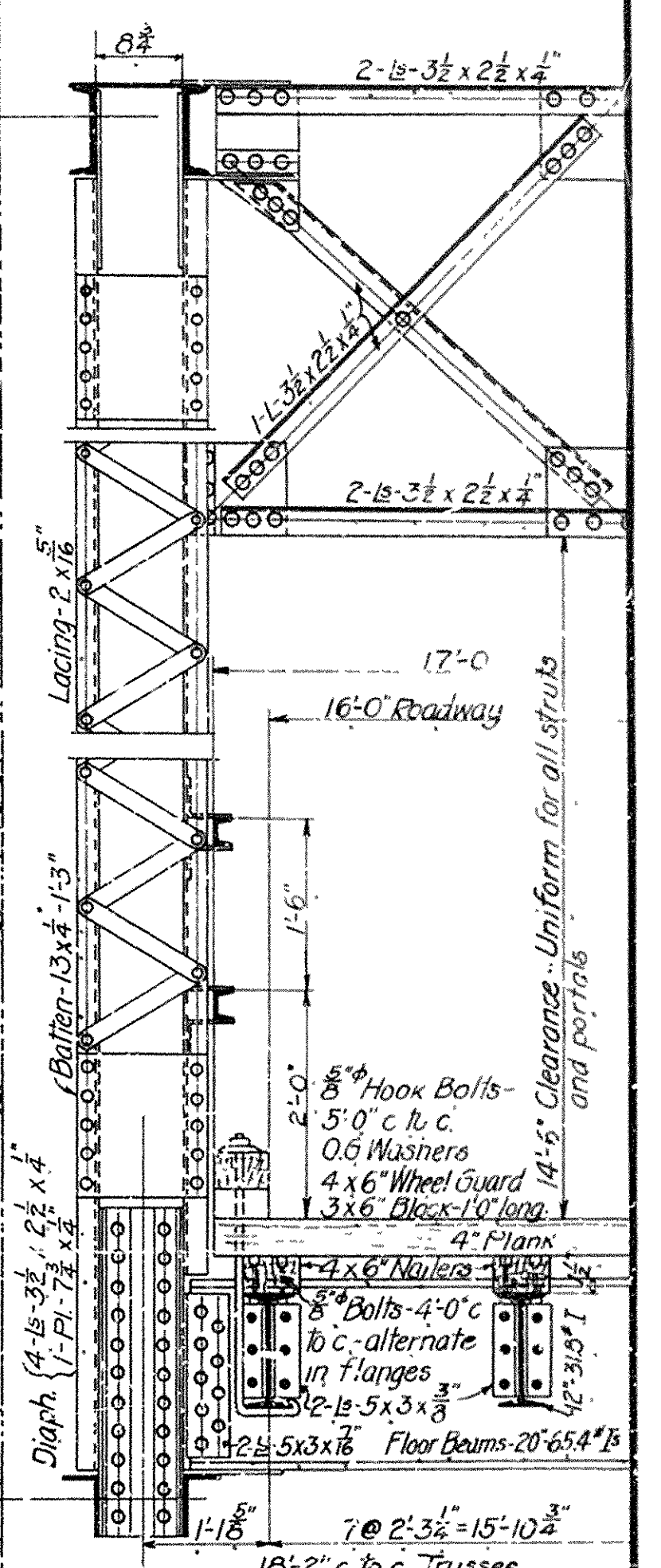
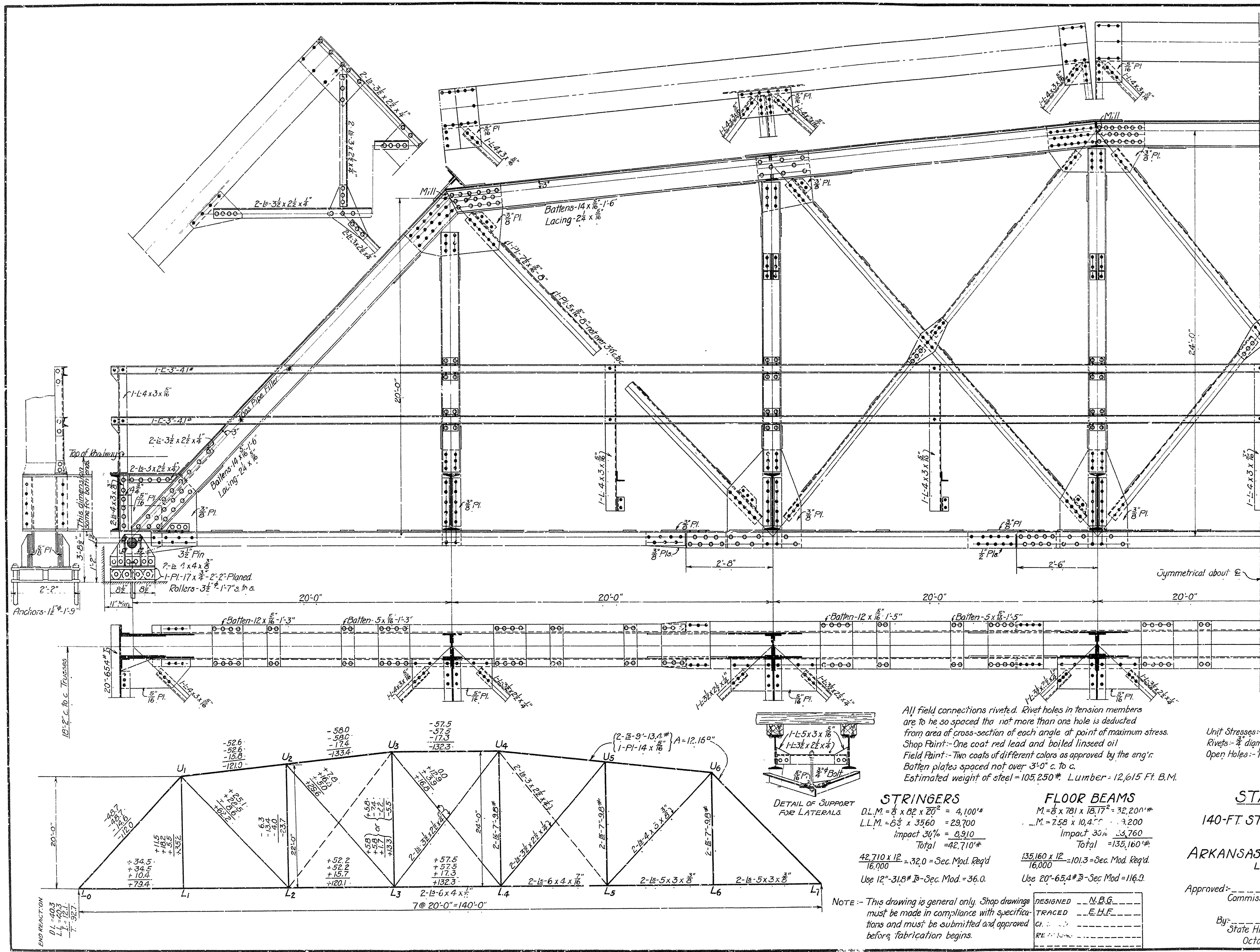


FED. AID DIST. NO.	STATE	FISCAL YEAR	FISCAL SHEET NO.	TOTAL SHEETS



SPECIFICATIONS

Live Load: - Uniform, - 72 lbs. per square foot of roadway.
 Concentrated: - 15-Ton Truck as shown below.

Impact - 30% of live load.
 Unit Stresses: - See Arkansas Highway Dept. Specifications.
 Rivets: - 3/4" diam, except in flanges of 7" channels.
 Open Holes: - 1/8" diam.

All field connections riveted. Rivet holes in tension members are to be so spaced that not more than one hole is deducted from area of cross-section of each angle at point of maximum stress.
 Shop Paint: - One coat of red lead and boiled linseed oil.
 Field Paint: - Two coats of different colors as approved by the eng'r.
 Batten plates spaced not over 3'-0" c. to c.
 Estimated weight of steel = 105,250#. Lumber = 12,615 Ft. B.M.

STRINGERS	FLOOR BEAMS
D.L.M. = $8 \times 82 \times 20^2 = 4,100\#$	$M = 8 \times 78 \times 18.17^2 = 32,201\#$
L.L.M. = $8 \times 8 \times 3560 = 29,700$	$M = 7.58 \times 10,4 \times 10 = 7,200$
Impact 30% = 8,910	Impact 30% = 3,760
Total = 42,710#	Total = 135,160#
$\frac{42,710 \times 12}{16,000} = 32.0 = \text{Sec. Mod. Req'd}$	$\frac{135,160 \times 12}{16,000} = 101.3 = \text{Sec. Mod. Req'd}$
Use 12"-31.8# B - Sec. Mod. = 36.0	Use 20"-65.4# B - Sec. Mod. = 116.0

NOTE: - This drawing is general only. Shop drawings must be made in compliance with specifications and must be submitted and approved before fabrication begins.

DESIGNED	N.B.G.
TRACED	E.H.F.
CL.	
RE.	

STANDARD PLAN
140-FT. STEEL HIGHWAY BRIDGE
16' ROADWAY
ARKANSAS HIGHWAY DEPARTMENT
LITTLE ROCK, ARK.

Approved: _____
 Commissioner State Lands, Highways & Improvements.

By: _____
 State Highway Engineer
 October, 1922. STATE STANDARD No. F-314-A.