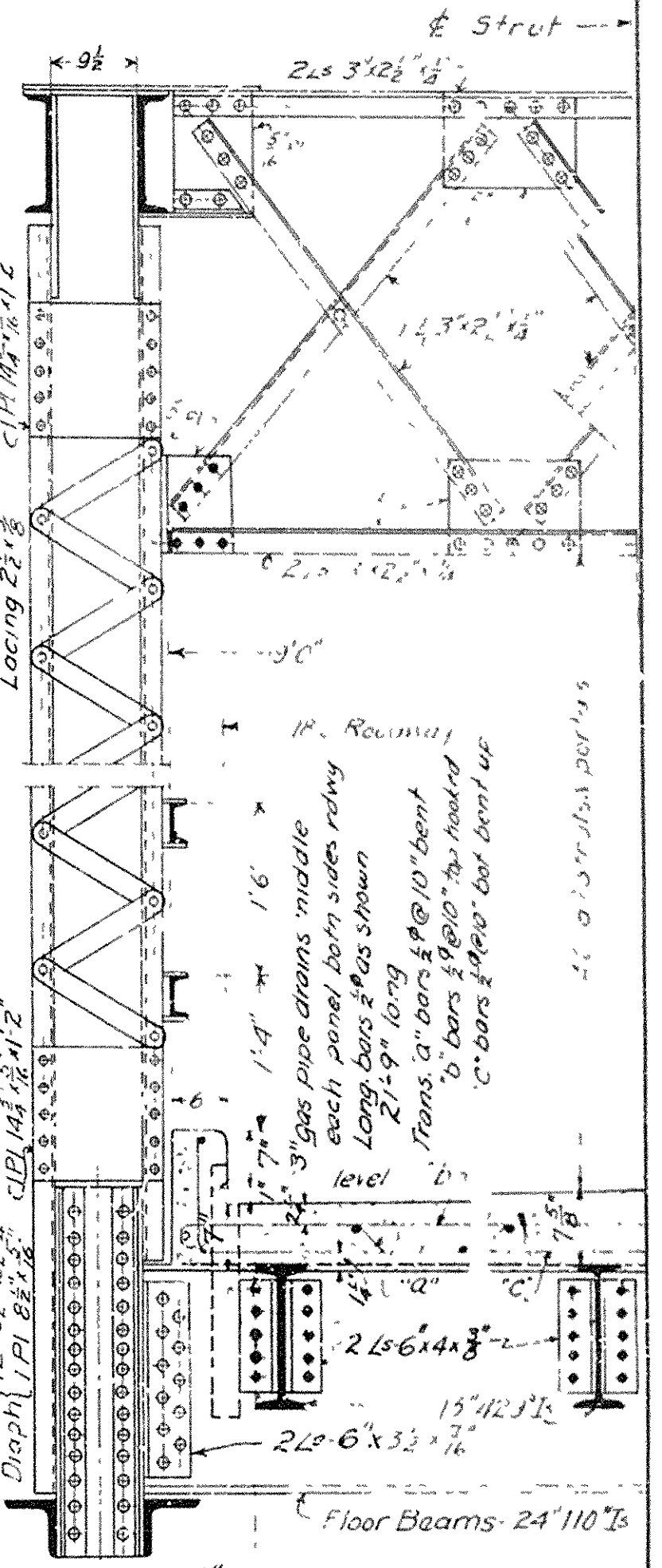
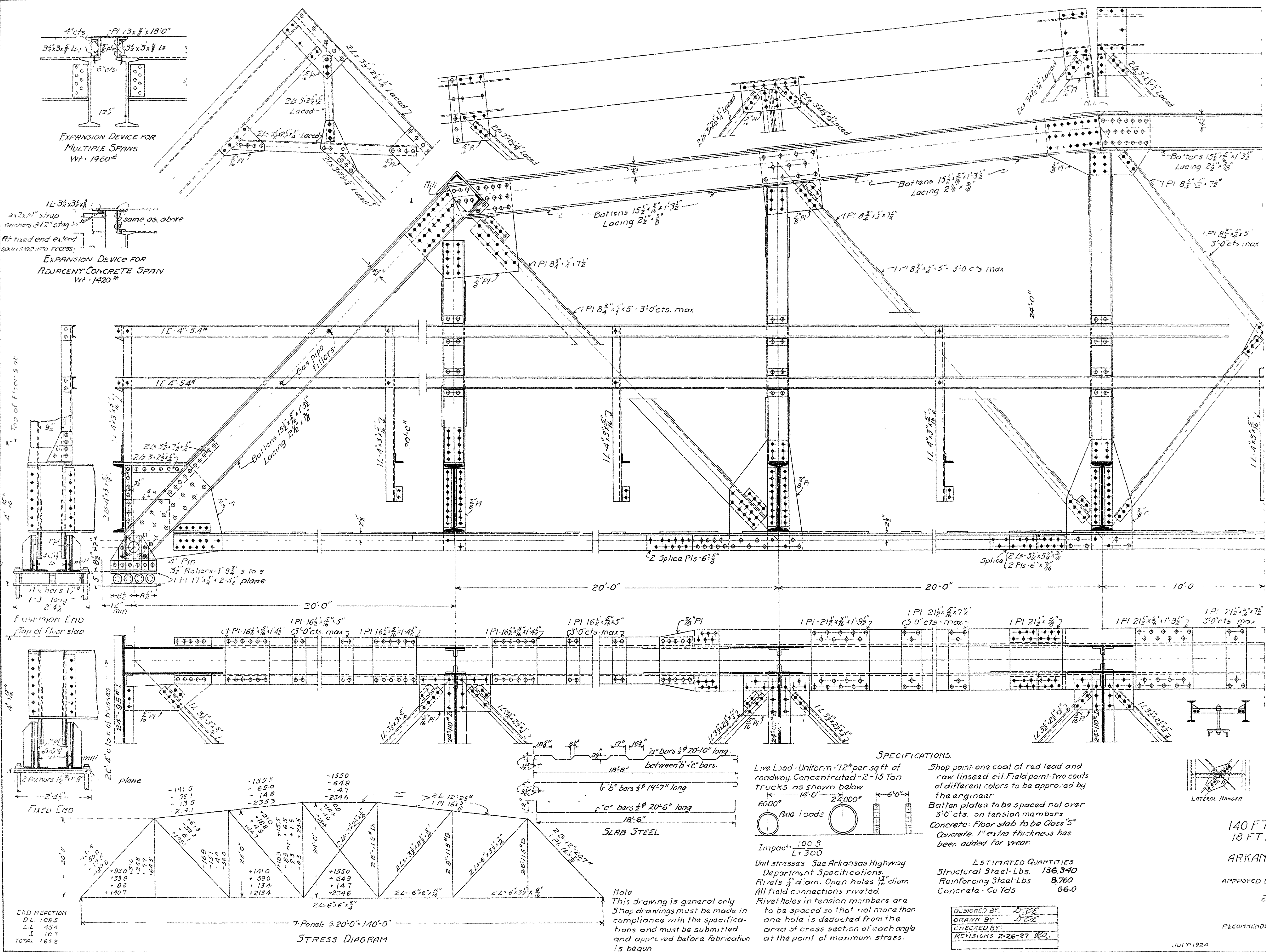


FED. AID DIST. NO.	STATE	FED. AID PROJ. NO.	FISCAL YEAR	SHEET NO.	TOTAL SHEETS
6	ARK.				



STRINGERS

DL M. 8 x 44 x 20"	= 20,700"
LL M. 4 x 9050 x 20"	= 45,200"
Impact 30%	= 13,600"
Total	= 79,500"

INT. FLOOR BEAMS

DL M. 8 x 44 x 20"	= 128,000"
LL M. 4 x 9050 x 20"	= 1,166,000"
Impact 30%	= 43,960"
Total	= 1,337,960"

Use 24\" 110\" I-beams Sec Mod - 2391

STANDARD PLAN
140 FT. STEEL HIGHWAY BRIDGE
18 FT. ROADWAY - CONCRETE FLOOR
ARKANSAS HIGHWAY DEPARTMENT
LITTLE ROCK, ARK.

APPROVED BY: _____
 CHAIRMAN, ARKANSAS STATE HIGHWAY COMMISSION
 DESIGNED BY: D. C. E.
 DRAWN BY: D. C. E.
 CHECKED BY: _____
 REVISIONS 2-26-27 R.L.
 JULY 1924
 STATE HIGHWAY BRIDGE ENGINEER