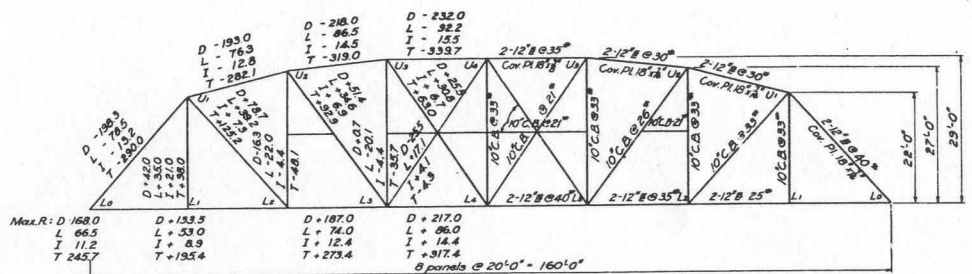
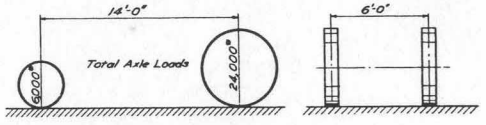


FED. DIST. No.	STATE	FED. A.C.	FISCAL YEAR	SHEET	TOTAL SHEETS	FISCAL YEAR	DATE	SHEET	TOTAL SHEETS
0	ARK.	22-52-31	1933	6	18	1933	1-10-58	6	18



**DESIGN STRESSES**

**SELECTION OF MEMBERS**



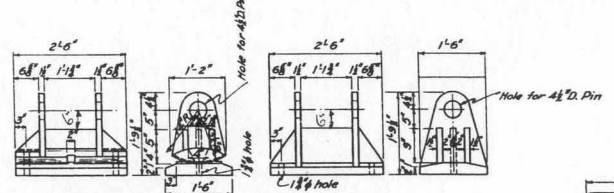
**QUANTITIES**

ITEM NO.	ITEM	AMOUNT
31	Class '3' Concrete for Bridges - Int. Spans	100.31 cu. yd.
31	Class '3' Concrete for Bridges - Int. Spans	100.22 cu. yd.
32	Reinforcing Steel for Bridges	16,388 lbs.
36	Structural Steel - Truss Bridges	284,387 lb.

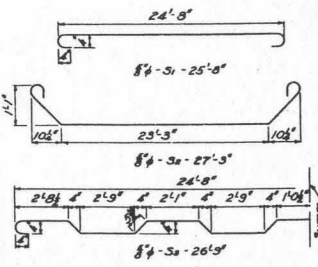
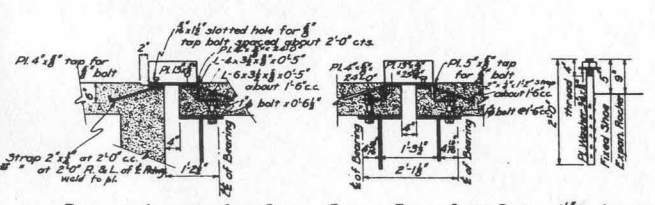
(Roadway Expansion Devices Have not been included)

**ALLOWABLE STRESSES**

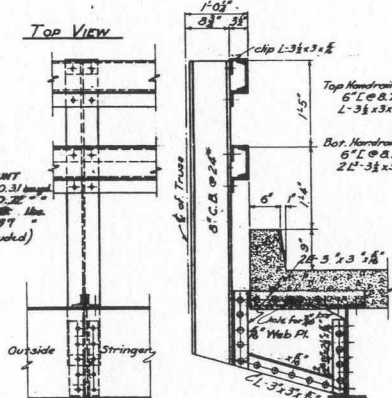
Reinforced Concrete in Compression: 750 lbs./sq. in.  
 Reinforcing Steel in Tension: 16,000 lbs./sq. in.  
 Structural: 16,000 lbs./sq. in.  
 Modulus Ratio of Steel to Concrete: 15



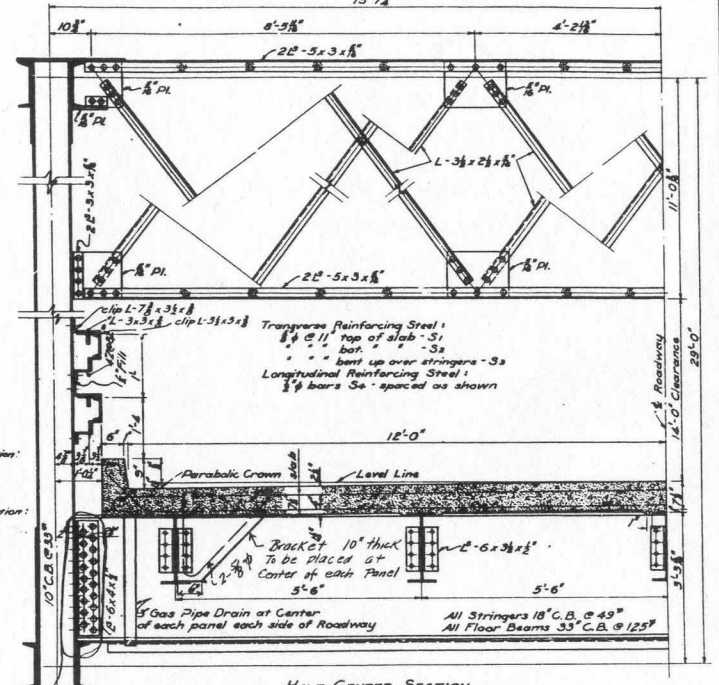
**CAST STEEL SHOES**



**TOP VIEW**

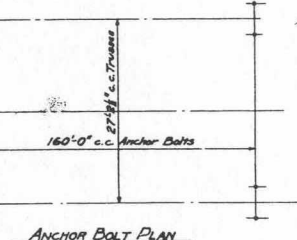


Driving Clearance?



**GENERAL NOTES**

3/8 rivets, 3/8 holes. All holes in truss connections to be sub-punched 1/8" and reamed to size while truss is assembled; this applies to field as well as shop rivets.  
 All floor beams and stringer connections to be sub-punched and reamed to size through a metal template.  
 All field connections shall be riveted.  
 All floor beams and stringers to be milled to exact length after framing angles have been riveted.  
 Shapes of equal or greater strength may be substituted for structural shapes shown; payment, however, will be made in accordance with sizes given on this plan.  
 Shop Paint: after being completely assembled, and shop work finished, all pieces shall be given one coat of red lead and raw linseed oil.  
 Field Paint: apply two coats of different colors as specified by the Engineer.  
 Floor Slab: concrete shall be Class '3'. It has been added for wear.  
 This drawing shows general features of design only.  
 Shop drawings shall be made in compliance with specifications, and shall be submitted and approved before fabrication is begun.  
 Specifications: Arkansas Standard Road and Bridge Specifications, adopted May 30, 1925, and revised.



Revised the 16-32-Increased Length of Gas Pipe Drain, R.R. Stringer and Floor Beam Connections.

**STANDARD PLAN  
 160'-0" STEEL SPAN  
 24'-0" CLEAR ROADWAY  
 ARKANSAS STATE HIGHWAY COMMISSION  
 LITTLE ROCK, ARK.**

Drawn By: [Signature] Date: 2-22-32  
 Traced By: [Signature] Date: 2-16-58  
 Checked By: [Signature] Date: \_\_\_\_\_  
**BRIDGE NO.** \_\_\_\_\_ **DRAWING NO.** 3568

*N.B. Garver*  
 BRIDGE ENGINEER