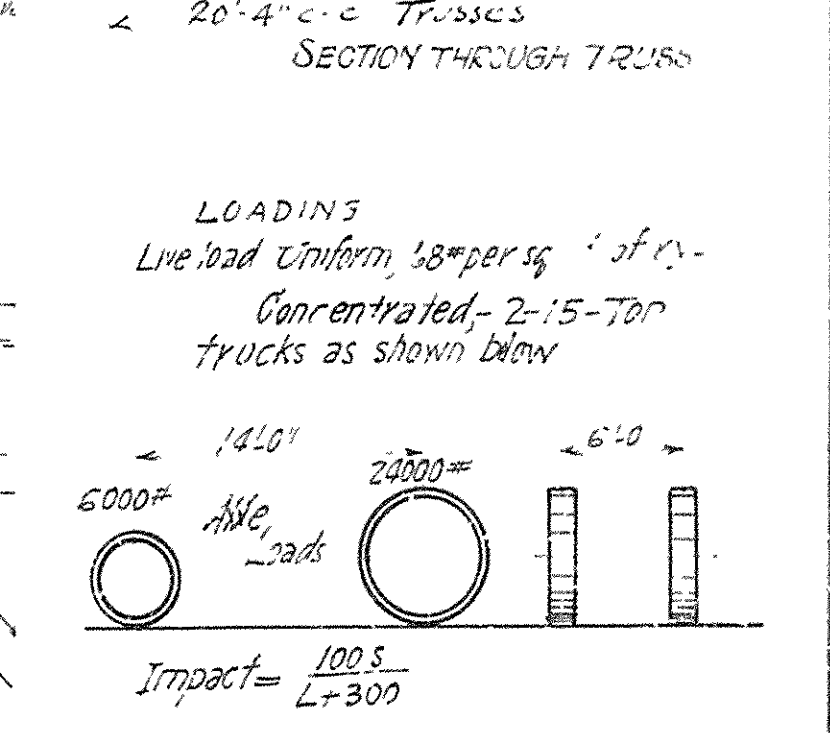
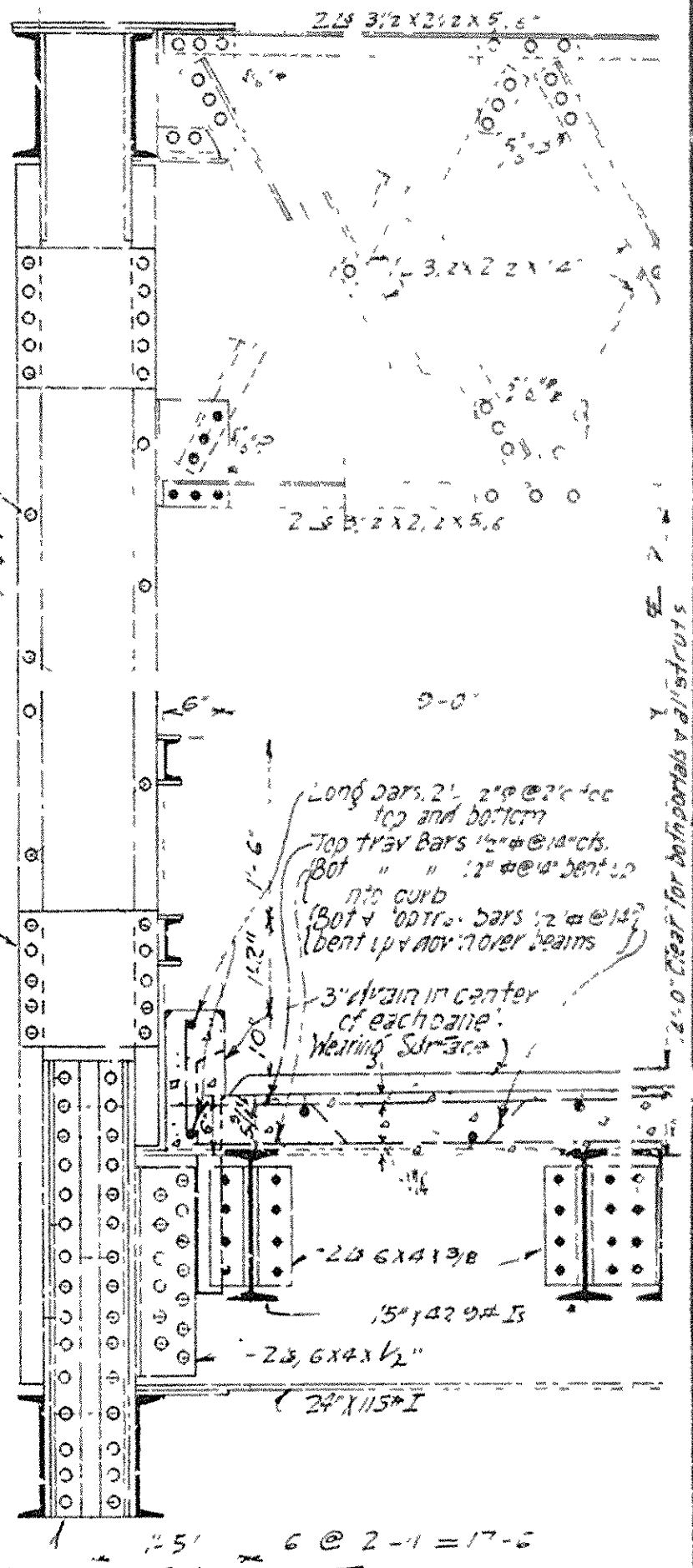
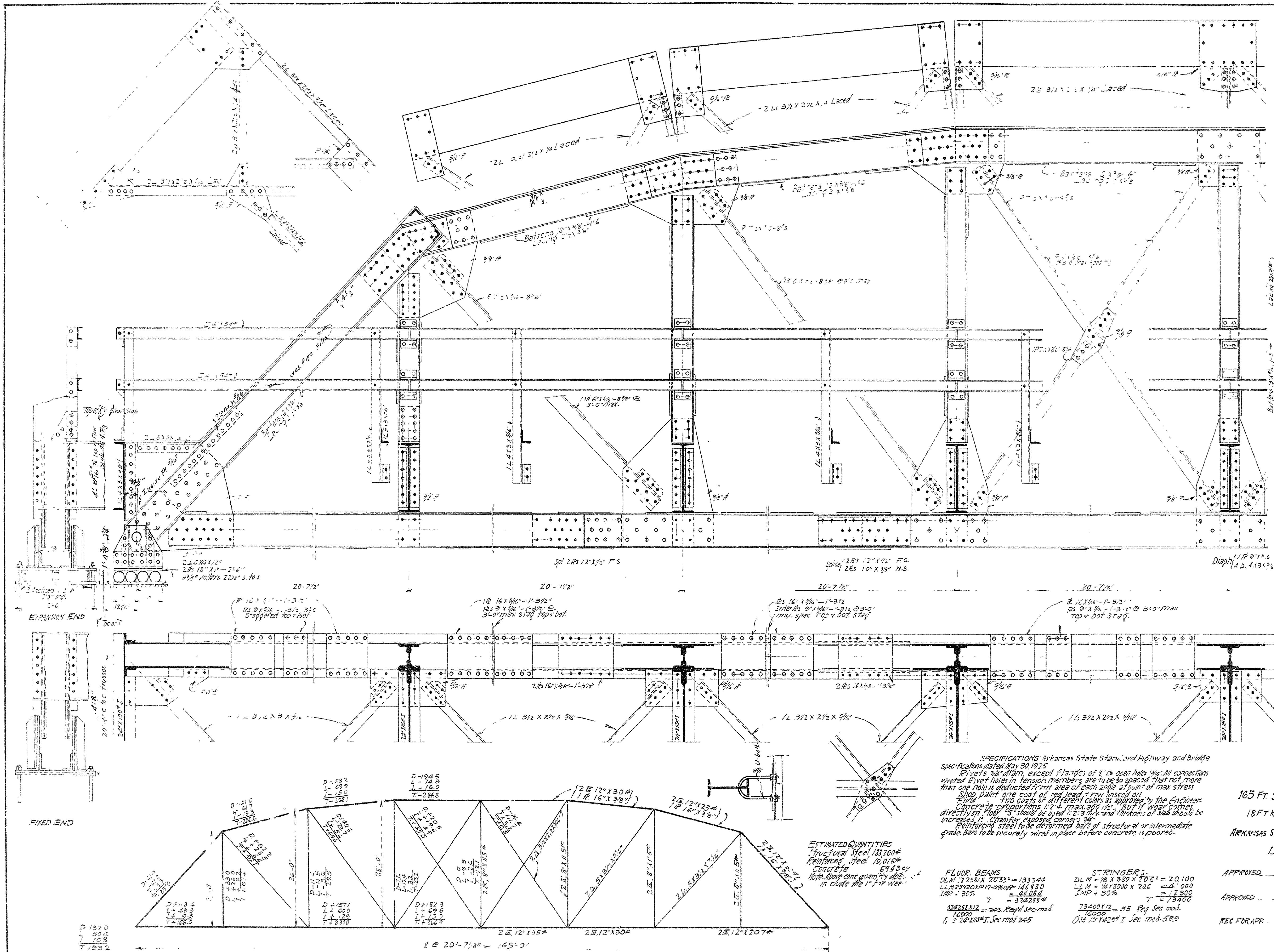


FED. ROAD DIST. No.	STATE	FED. AID PROJ. No.	FISCAL YEAR	SHEET No.	TOTAL SHEETS
8	ARK.				



SPECIFICATIONS Arkansas State Standard Highway and Bridge specifications dated May 30, 1925
 Rivets 3/4" diam, except flanges of 8" & 10" open holes 1/2". All connections riveted. Holes in tension members are to be spaced that not more than one hole is deducted from area of each angle at point of max stress.
 Slip paint one coat of red lead, & var inseed oil.
 Field concrete to be placed in 2" max. 200 # mesh. But if wear comes directly from floor it should be over 1/2" max. and thickness of slab should be increased 1". Chamfer exposed corners.
 Reinforcing steel to be deformed bars of structural or intermediate grade. Bars to be securely wired in place before concrete is poured.

ESTIMATED QUANTITIES
 Structural Steel 188,200#
 Reinforcing Steel 10,016#
 Concrete 6943 cu yd
 Note Above quantities do not include the 1" dia wear.

FLOOR BEAMS
 DLM 12 1/2 x 20 3/4 = 133544
 LLM 12 1/2 x 20 3/4 = 146880
 IMP 1 30% = 44064
 T = 324488#
 2498812 = 293 Repl sec mod 16000
 1, 2 24 x 18" I. Sec mod 245

STRINGERS
 DLM 1/2 x 380 x 206 = 20,100
 LLM 1/2 x 380 x 206 = 4,000
 IMP 1 30% = 12,300
 T = 73400
 73400 x 12 = 55 Repl sec mod 16000
 Use 15 1/2" I. Sec mod 569

STANDARD PLAN
 165 FT. STEEL HIGHWAY BRIDGE
 18 FT ROADWAY - CONCRETE FLOOR
 ARKANSAS STATE HIGHWAY DEPARTMENT
 Little Rock, Ark. Jan. 1926.

APPROVED _____ State Highway Commissioner
 APPROVED _____ State Highway Engineer
 REC FOR APP _____ State Highway Engineer
 etc. etc. etc.