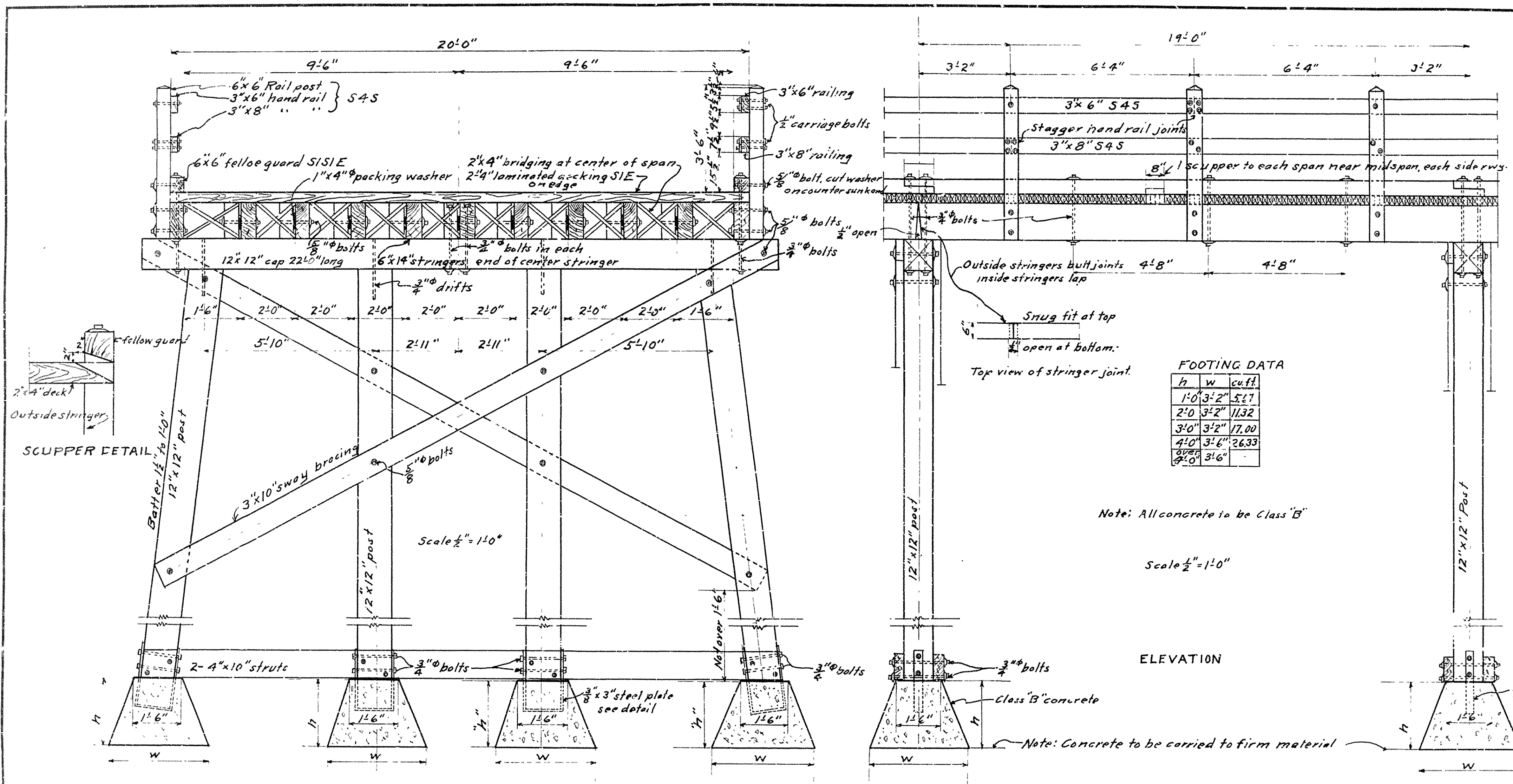


PER DIST. NO.	STATE	U.S.P.W. PROJ. NO.	FISCAL YEAR	SHEET NO.	TOTAL SHEETS
	ARK				

ARKANSAS STATE JOB No.



FOOTING DATA

h	w	cu ft.
1'-0"	3'-2"	5.67
2'-0"	3'-2"	11.32
3'-0"	3'-2"	17.00
4'-0"	3'-6"	26.33
5'-0"	3'-6"	

Each stringer to be spiked to caps with 4-40d spikes and to be sized at bearing points in field. 2"x4" laminated decking S1E, ends to be flush. Each piece to be nailed to each adjacent piece once between each stringer with 30d spike. Each piece to be nailed to alternate stringers with 20d spike. Alternate pieces to be nailed to alternate stringers. Random length pieces of 2"x4" decking may be used under the following conditions:

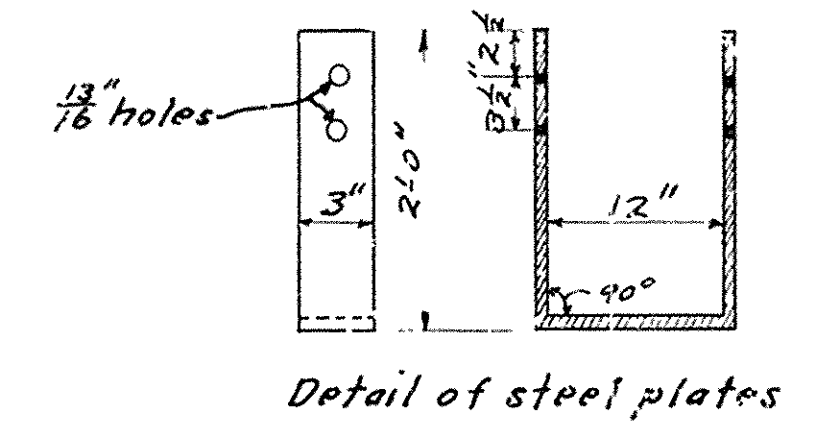
1. Each joint to be made on stringers.
2. Each piece shall cover at least 3 stringers.
3. No more than one joint in any length (lamina)
4. Each joint to be followed by at least 3 full length pieces.

Use sway bracing on all bents 5'-0" or over in height. Use malleable or cast iron washers on both ends of machine bolts unless noted otherwise. All timber except 3"x6" and 3"x8" rail members to be treated. Handrail shall be made of untreated seasoned, dressed lumber, and shall be painted with 3 coats of paint in accordance with paragraph 52.3(a) of Ark. State Standard Specifications. All treated timber to be treated by empty cell process in accordance with paragraph 52.2(d) of Ark. State Standard Specifications. Concrete to be Class B and poured in the dry. Specifications: Arkansas State Road and Bridge Specifications adopted May 30, 1925.

Note: All concrete to be Class "B"

Scale 1/2" = 1'-0"

ELEVATION



CROSS SECTION OF ROADWAY

ABUTMENT DETAILS

NOTE: MEASUREMENT FOR PAYMENT OF THE 2"x4" LAMINATED DECKING SHALL BE COMPUTED AT 80 (EIGHTY) FT. B.M. PER LIN. FT. OF BRIDGE. ENDS OF DECKING TO BE FLUSH.

DETAILS OF 19'-0" STANDARD FRAME TRESTLE

19'-0" CLEAR ROADWAY
ROUTE SEC.

ARKANSAS STATE HIGHWAY DEPARTMENT
LITTLE ROCK, ARK.

Drawn by: RWA Date: 4-20-28
Traced by: " " Date: " "
Checked by: " " Date: " "

BRIDGE No 1907 SCALE: in. ft. DRAWING No. 15

M.B. Leaver
BRIDGE ENGINEER

Revised
1-11-29 F.R. Britton
Lengthened end cap (22' to 30')
Prestaballs (Max. W. 316")