

CROSS SECTION ROADWAY.

ELEVATION.

Notes:

Each stringer to be spiked to caps with 4-40d spikes and to be sized at bearing points in field. 2x4 laminated decking SISE. Each piece to be nailed to each adjacent piece once between each stringer with 30d spike. Each piece to be nailed to alternate stringers with 20d spike. Alternate pieces to be nailed to alternate stringers.

Random length pieces of 2x4 decking may be used under the following conditions:

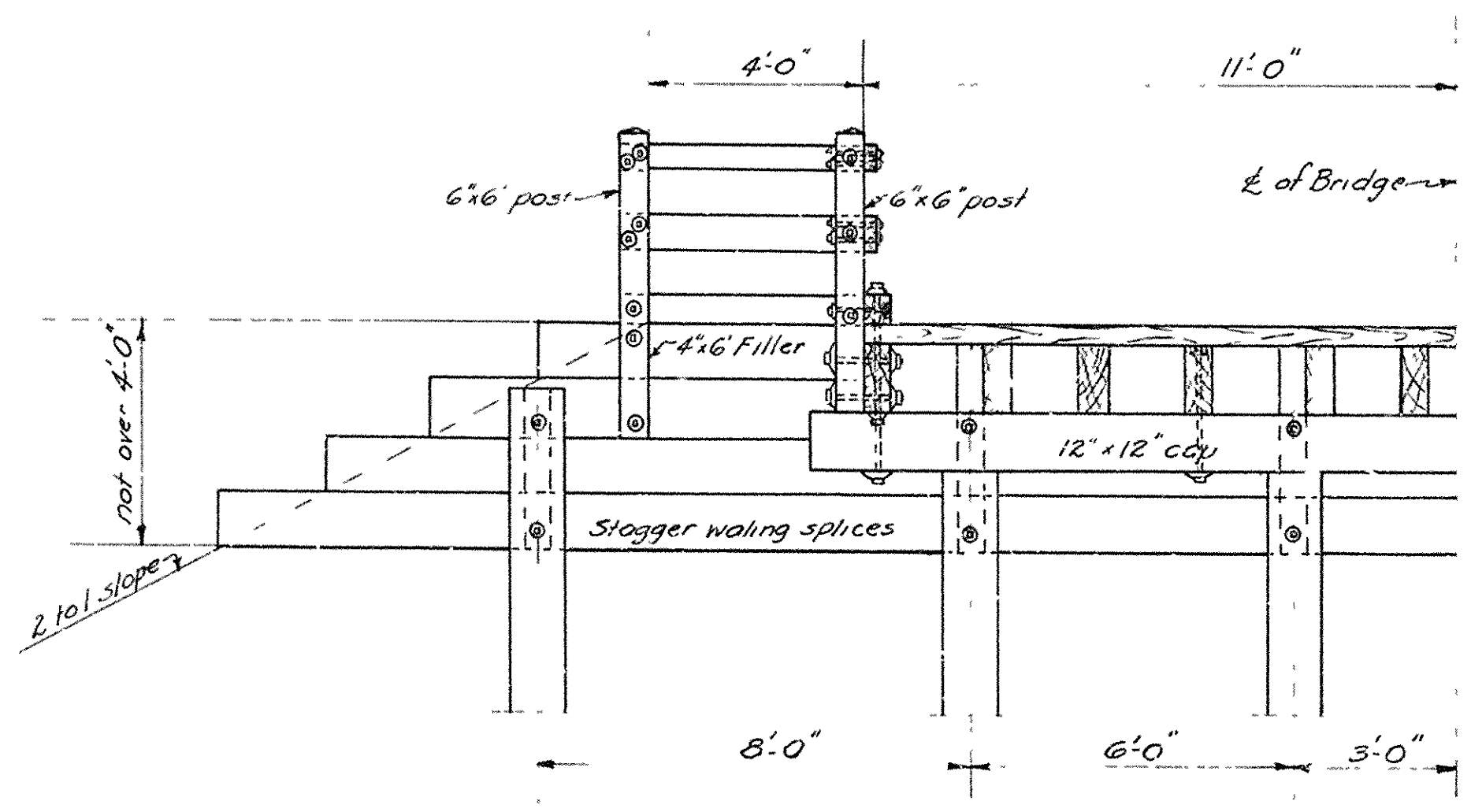
1. Each piece made on stringers
2. Each piece will cover at least 3 stringers
3. No more than one joint in any length (lamina)
4. Each joint to be followed by at least 3 full length pieces

Use sway bracing on all bents 5'0" or over in height. Use malleable or cast iron washers on both ends of machine bolts unless noted otherwise.

All timber and piling except 3x6 and 3x8 rail members to be treated. Rail members shall be made of untreated, seasoned, dressed lumber, and shall be painted with 3 coats of paint in accordance with paragraph 513(a) of Ark State Standard Specifications.

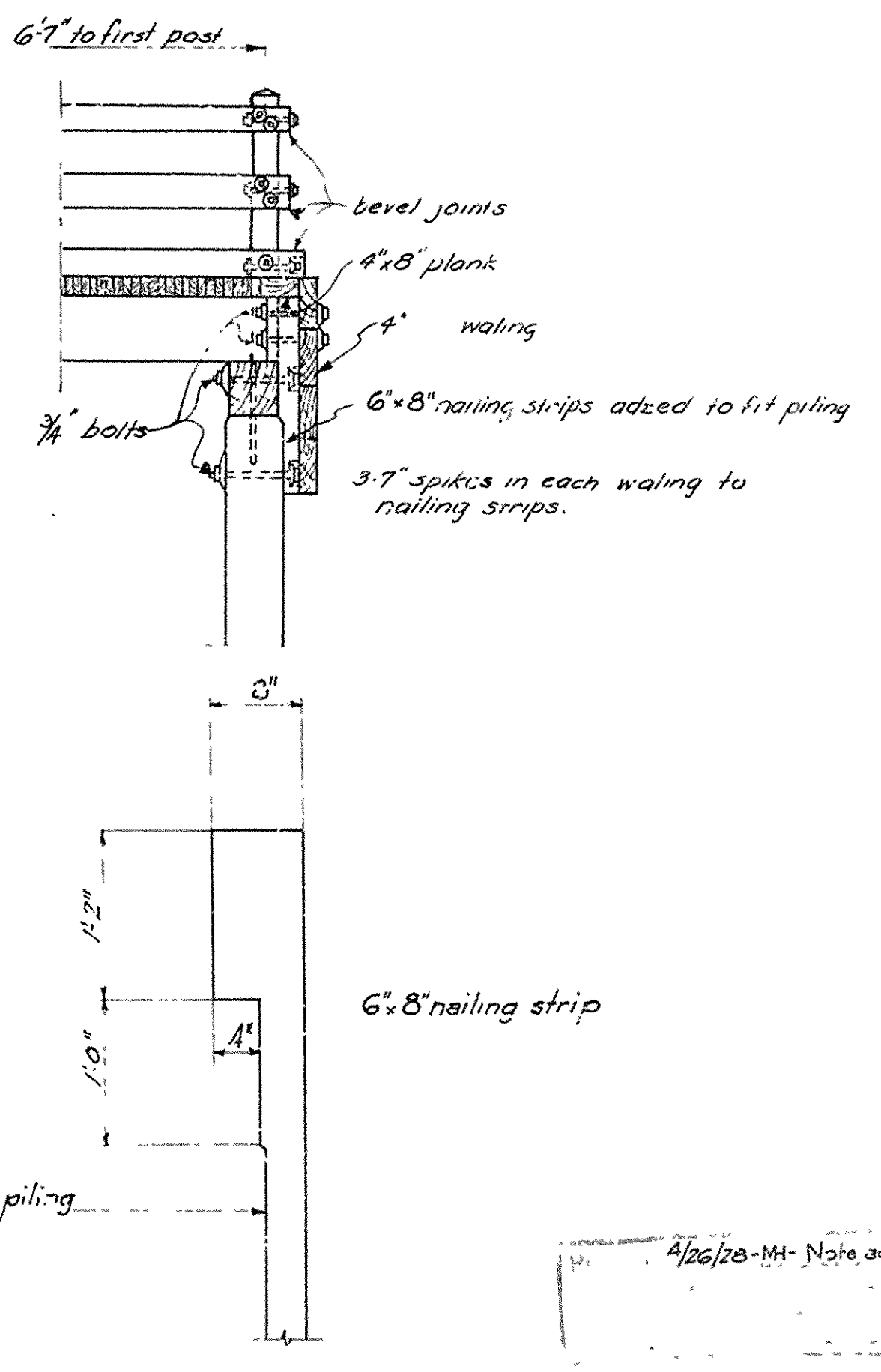
All treated timber and piling to be treated by empty cell process in accordance with paragraph 522(d) of Ark State Standard Specifications.

Specifications: Arkansas State Road and Bridge Specifications adopted May 30, 1925.



ABUTMENT DETAILS

Scale: 3/8" = 1'-0"



6x8 nailing strip

Adze to fit piling

NOTE: MEASUREMENT FOR PAYMENT OF THE 2 X 4 LAMINATED DECKING SHALL BE COMPUTED AT 88 (EIGHTY-EIGHT) FT. B.M. PER LINEAL FEET OF BRIDGE ENDS OF DECKING TO BE FLUSH.

DETAILS OF
19'-0" STANDARD TREATED TIMBER TRESTLE.
21'-0" CLEAR ROADWAY.
ARKANSAS STATE HIGHWAY DEPARTMENT.
Little Rock, Arkansas. August 1927.

N.B. Laver
Bridge Engineer.