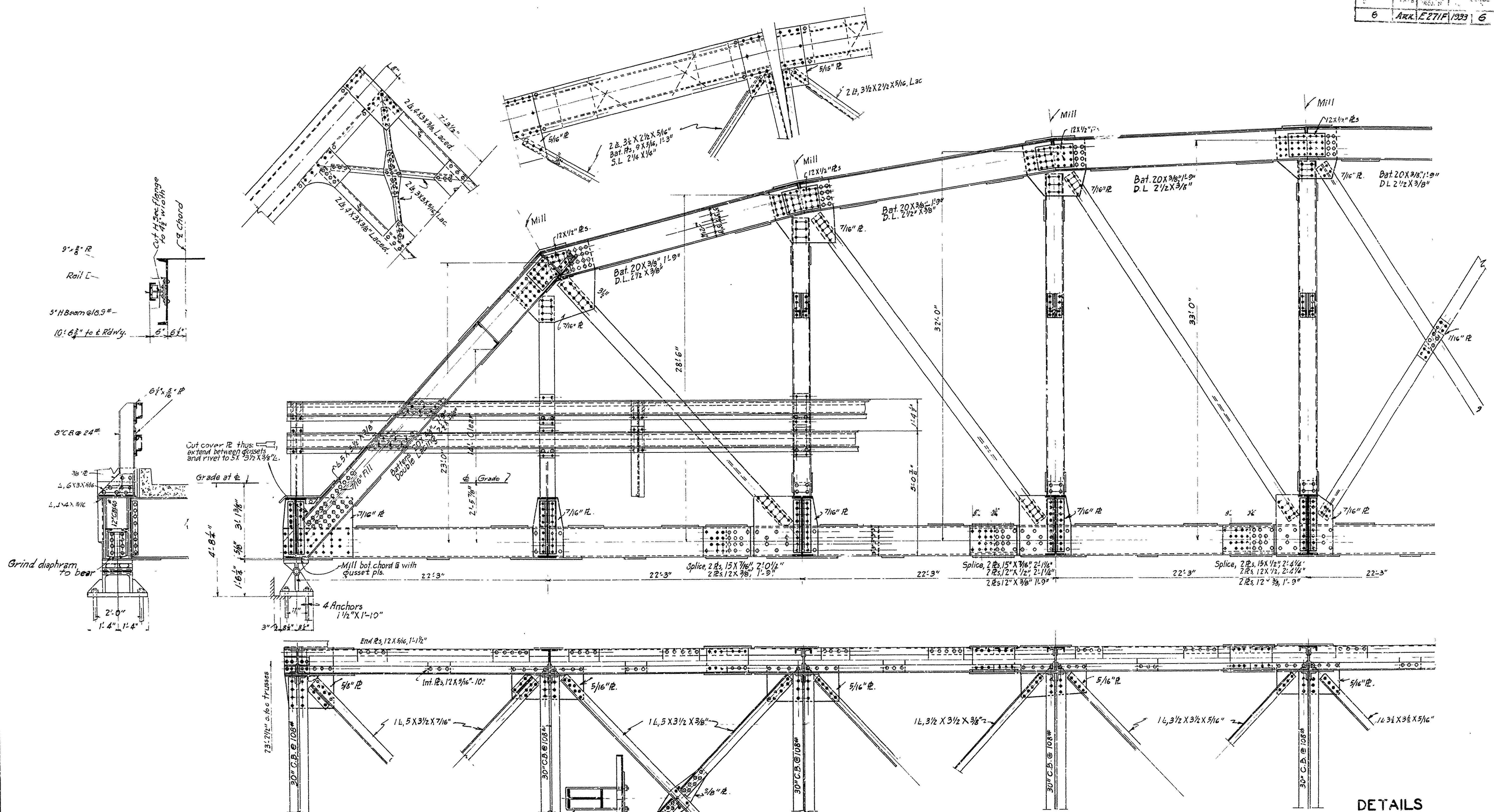


FISCAL YEAR		SHEET No.	TOTAL SHEETS
6	Ark. E 27 F 1333	6	13



NOTE: All rivets 7/8" except in flanges of 7' & 9" B. and in logs of angles less than 3". See notes on Drawing No. 3537.

DETAILS
 200'-3" THRU TRUSS SPAN
 20 CLEAR ROADWAY
 ROUTE 67 SEC. 6
 ARKANSAS STATE HIGHWAY COMMISSION
 LITTLE ROCK, ARK.
 Drawn By: _____ Date: _____
 Traced By: _____ Date: _____
 Checked By: _____ Date: _____
 Scale: 1/2 in. = 1 ft. Details
 1/4 in. = 1 ft. Panels
 BRIDGE NO. 3537
 DRAWING NO. 3536
 1 of 2 Drawings

R. B. Jones
 BRIDGE ENGINEER