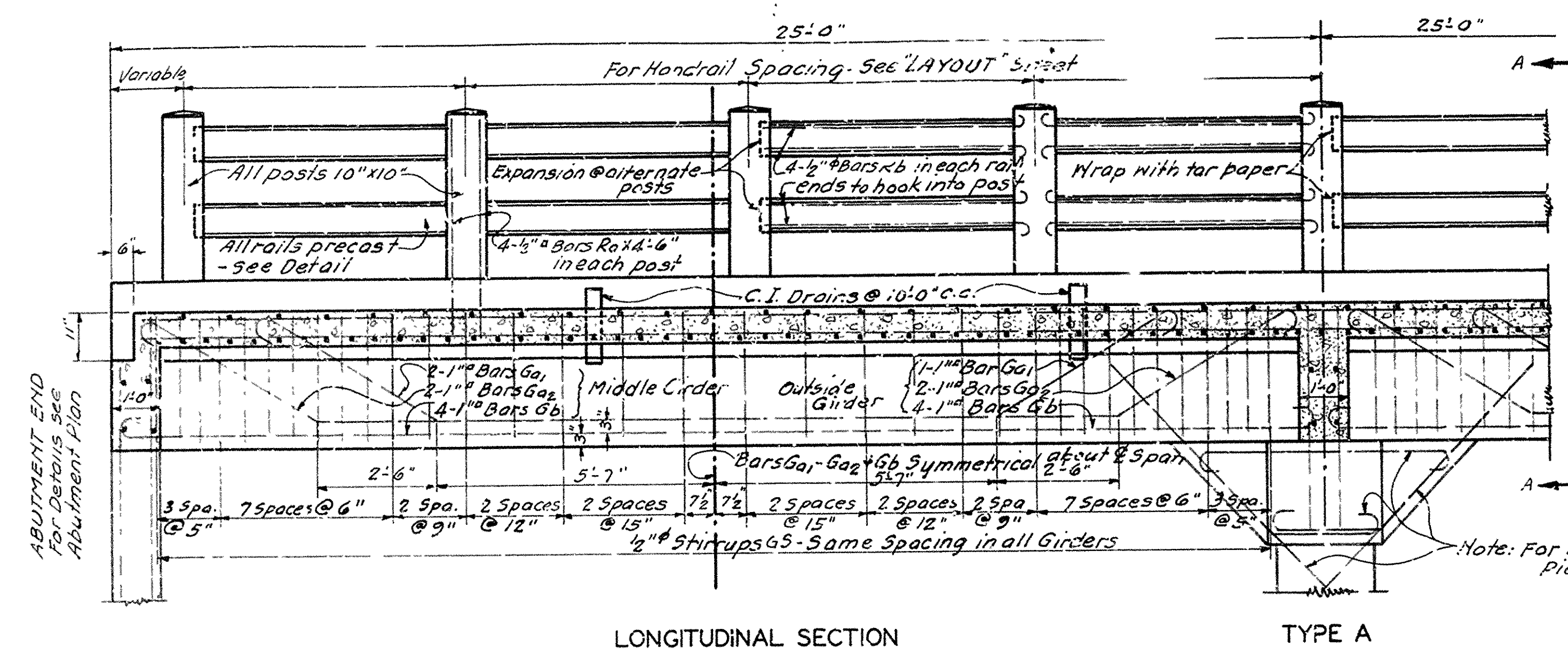
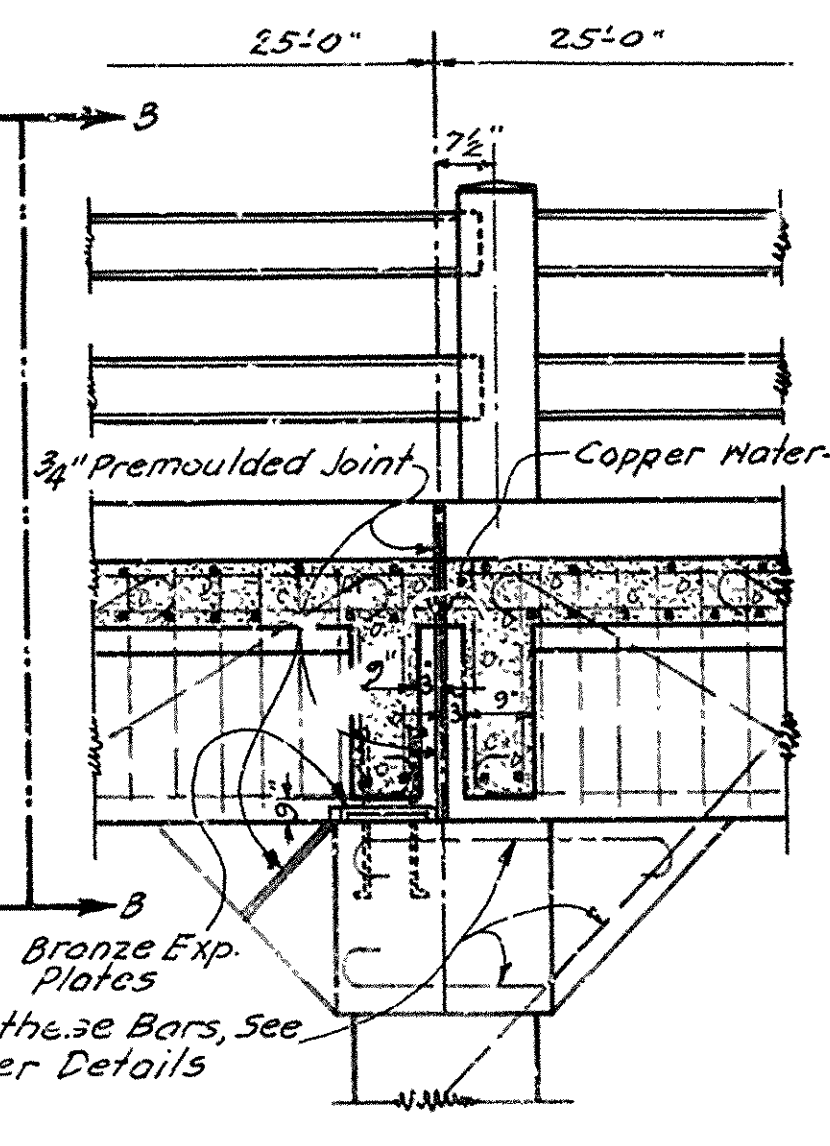


FISCAL YEAR	SHEET NO.	TOTAL SHEETS
Sys. 25 R.C.D. GIRDER 20' ROADWAY		
STATE	NO.	
ARK.	248A	16 16



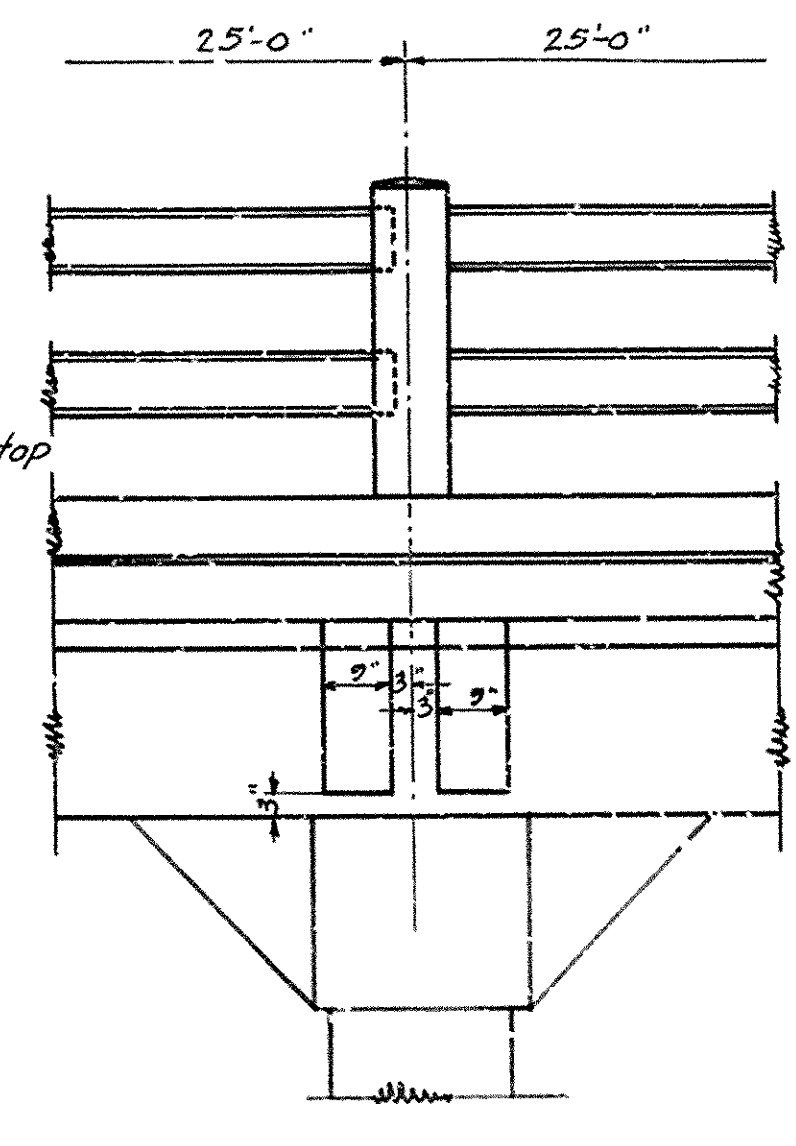
LONGITUDINAL SECTION

TYPE A



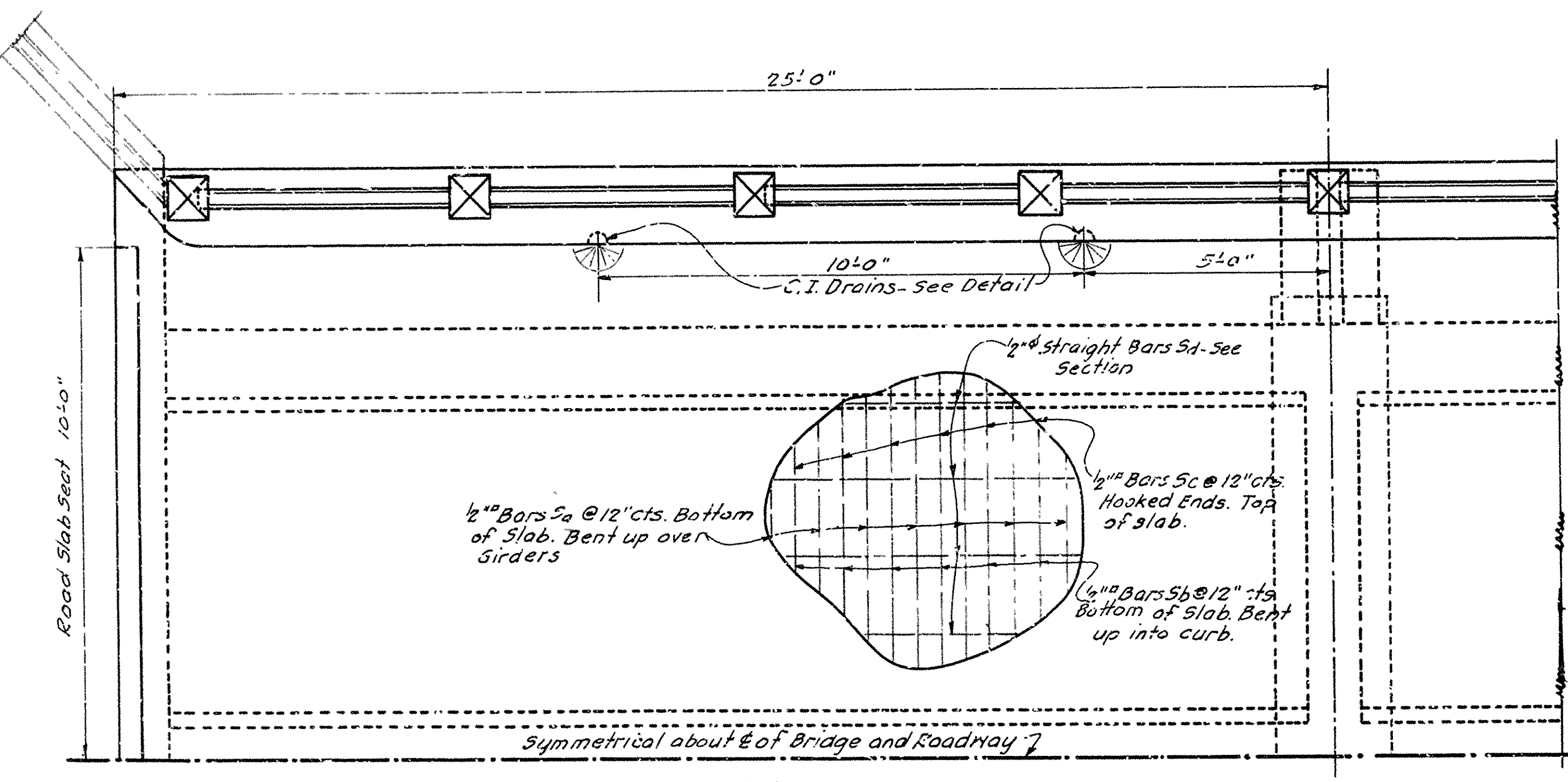
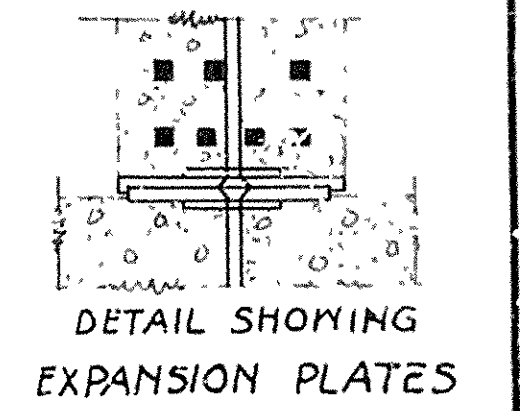
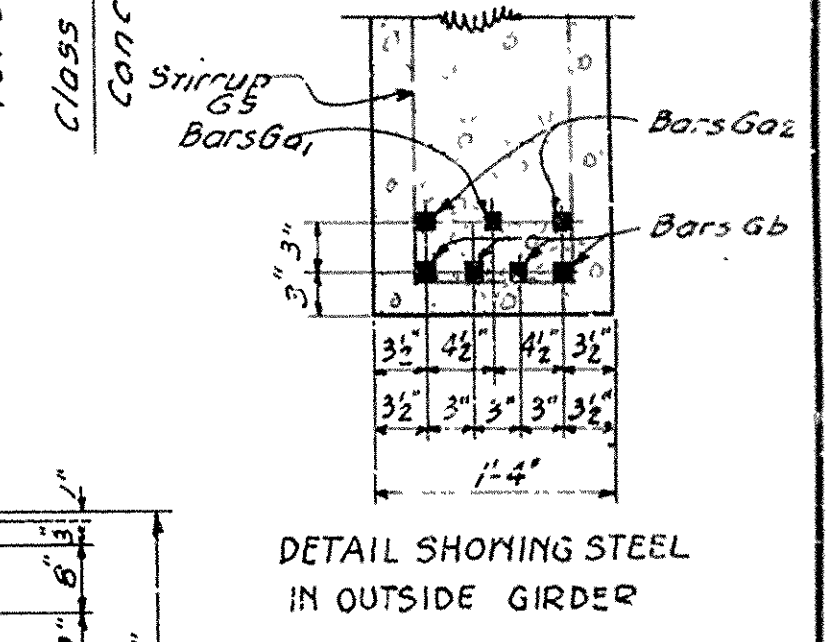
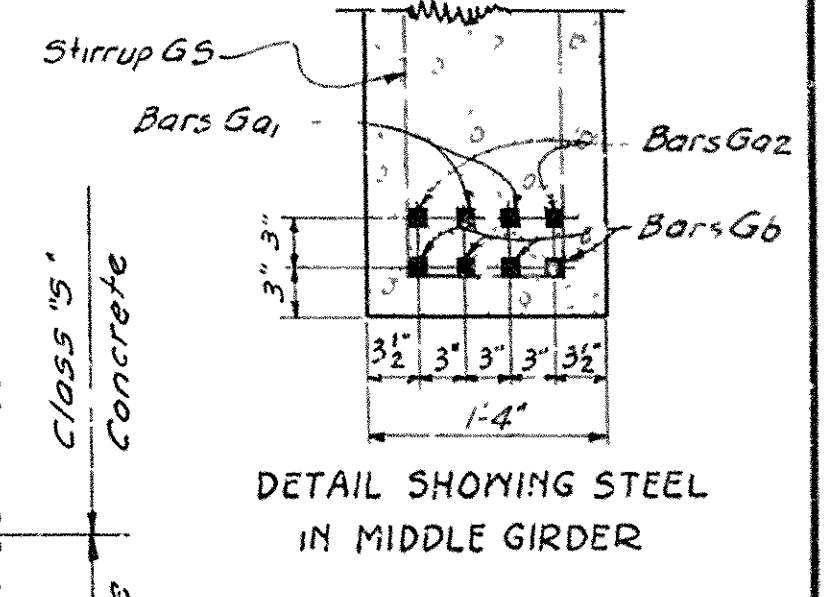
TYPE B

See layout for location of Expansion Joints

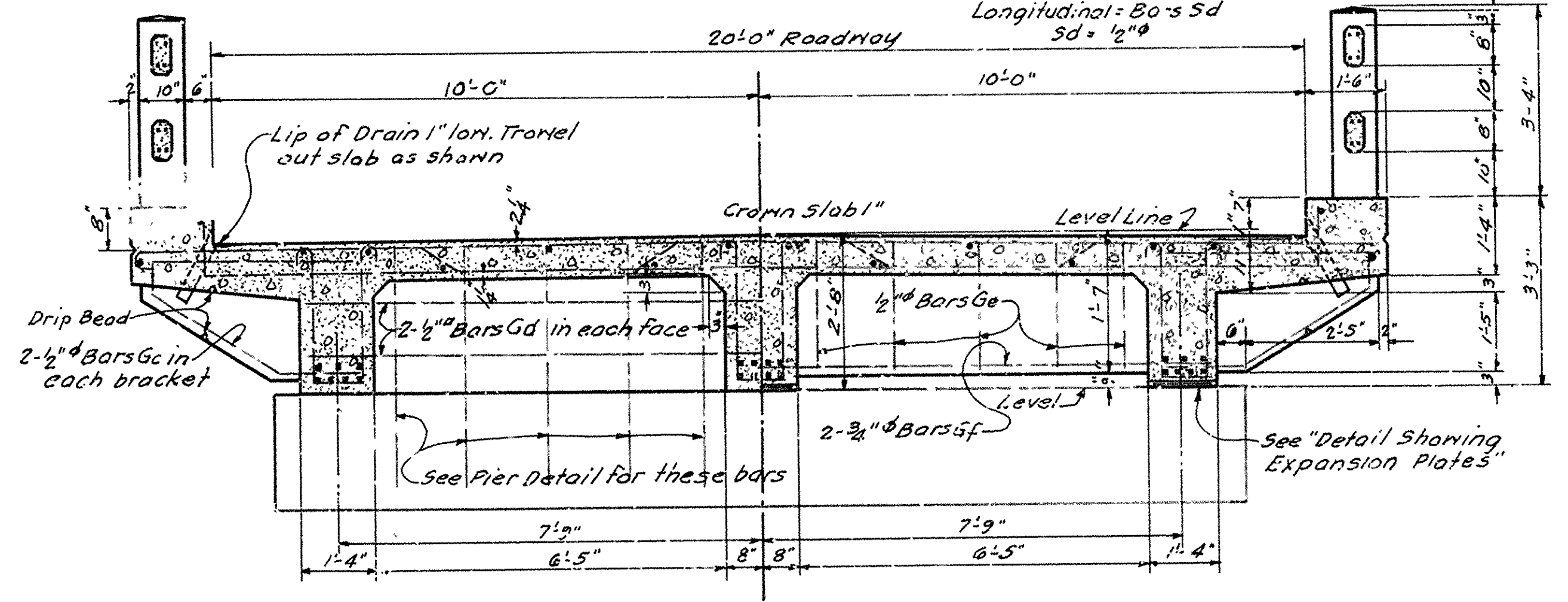


DETAIL OF BRACKETS

Slab Steel:
 Transverse: Bars Sa-Sb+Sc
 Sa = 1/2" x 24'-2"
 Sb = 1/2" x 23'-0"
 Sc = 1/2" x 23'-6"
 Longitudinal: Bars Sd
 Sd = 1/2" x 4'



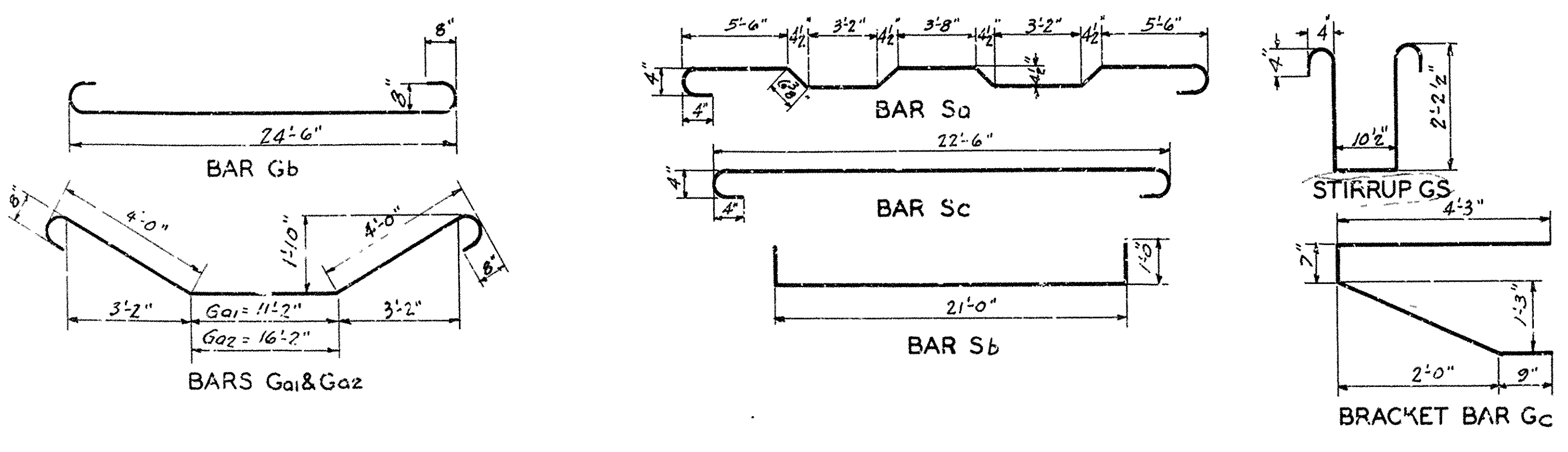
HALF-PLAN



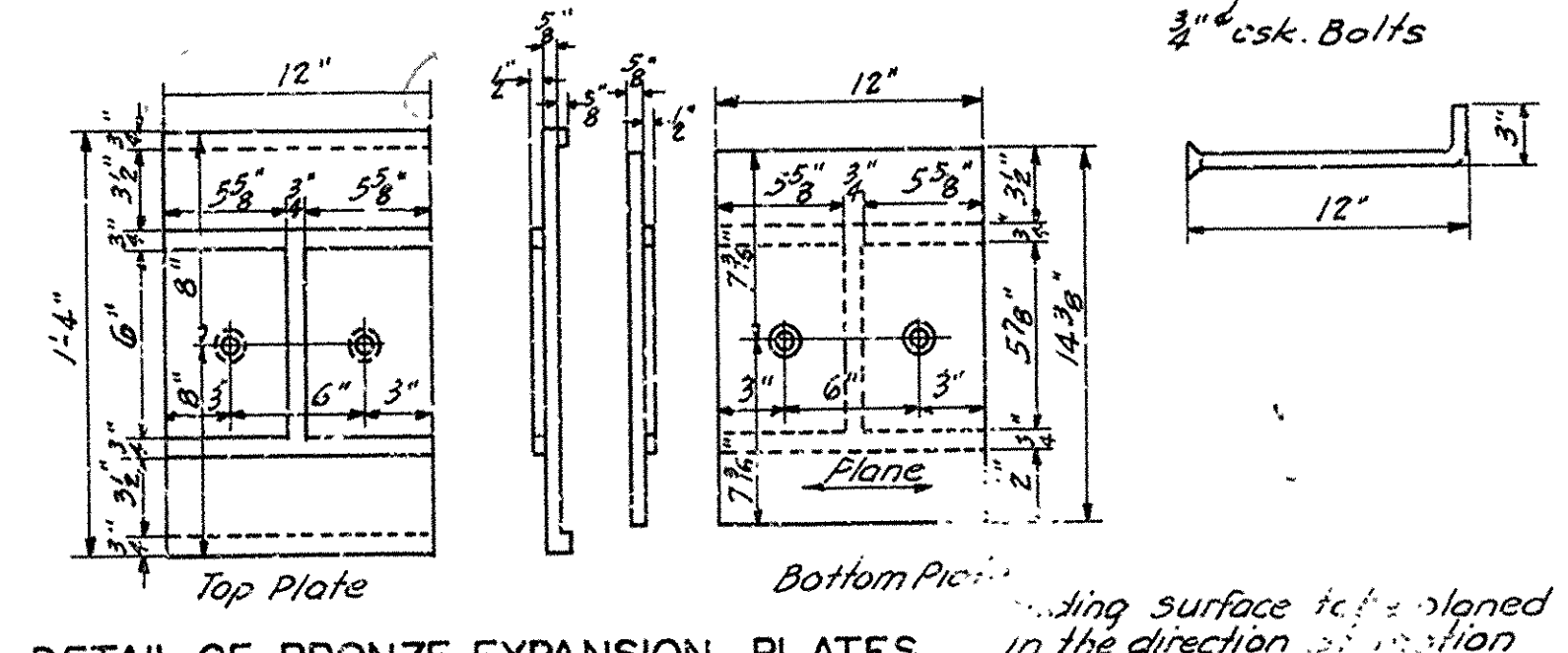
SECTION A-A

SECTION B-B

GENERAL NOTES:
 All exposed corners to have 3/4" chamfer unless otherwise noted.
 Precast Concrete Handrails to be 13 Mx. Maximum aggregate 1/4"
 Rail Posts to be Class 'S' Concrete.
 Reinforcing Steel to be deformed bars of Structural or Intermediate grade. Shop list and Bending Diagrams of Steel must be submitted before fabrication. Drains and Exp. Devices to be paid for at the unit price bid for Reinforcing Steel.
 All Concrete above top of Column cap except Handrail. Class 'S' below. Class 'A' Specifications: Arkansas Standard Road and Bridge Specifications, adopted May 30, 1925.
 All Concrete to be poured in the dry.

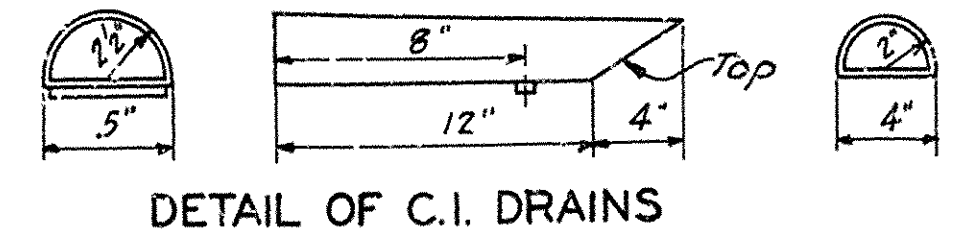


RAIL SECTION



DETAIL OF BRONZE EXPANSION PLATES

3 pair required at each Exp. Joint



STANDARD SUPERSTRUCTURE FOR 25' R.C.D. GIRDER 20' ROADWAY ROUTE SEC.

ARKANSAS STATE HIGHWAY DEPARTMENT
 LITTLE ROCK, ARK.
 Drawn By: A.M.G. Date: 2-23-28
 Traced By: A.M.G. Date: 2-26-28
 Checked By: _____ Date: _____
 BRIDGE NO. _____ SCALE: 1/2" = 1' ft.
 DRAWING NO. 183

M.B. Weaver
 CIVIL ENGINEER