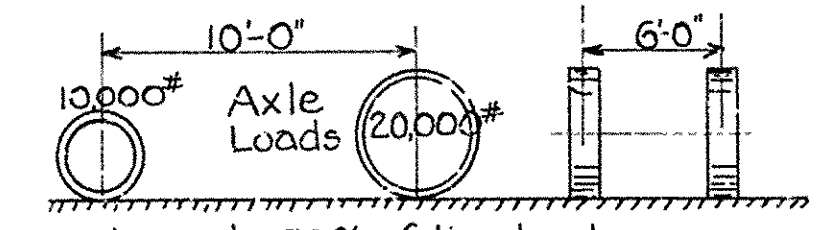


**SPECIFICATIONS**

Live Load, Uniform - 80 lbs. per square foot of roadway.  
 Concentrated - 15-Ton Truck as shown below.  
 Impact - 30% of live load



Unit Stresses: See Arkansas Highway Department Specifications.  
 Distribution of concentrated load - For Wood Floor, Spacing of joists in inches divided by 48 - For Concrete Floor, Spacing of joists in inches divided by 72  
 Concrete Proportions: - 1:2:4. If wear comes directly on floor slab increase thickness of slab 1" and use concrete proportions - 1:2:3.  
 All field connections riveted when other structural work requires field riveting, otherwise bolted.

DESCRIPTION	STA.	TO STA.

**STANDARD PLAN**  
 STEEL BEAM BRIDGES - 16' ROADWAY  
 ARKANSAS HIGHWAY DEPARTMENT  
 LITTLE ROCK, ARK.

Approved: Commissioner State Lands, Highways & Improvements

By: State Highway Engineer

Jan, 1923

STATE STANDARD NO. F-399-A

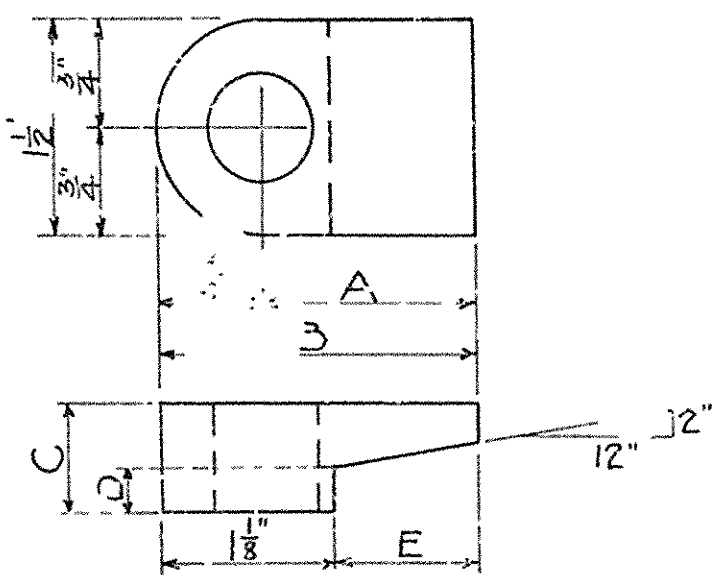
**TABLE OF BEAM SIZES**

CLEAR SPAN	SIZE OF I-BEAMS		CLEAR SPAN	SIZE OF I-BEAMS	
	WOOD FLOOR	CONC. FLOOR		WOOD FLOOR	CONC. FLOOR
24'	15"-42.9"	15"-42.9"	26'	15"-42.9"	15"-42.9"
27'	15"-42.9"	15"-42.3"	30'	15"-42.9"	15"-42.9"
20'	12"-31.8"	12"-31.8"	32'	18"-54.7"	18"-54.7"
			40'	7 Lines 20" x 5"	

**TABLE OF BEARING PLATE SIZES**

SPANS	BEARING PLATE SIZES
Spans up to 16'	8" x 12" x 12"
Spans 17' to 20'	8" x 14" x 14"
Spans 21' to 30'	8" x 14" x 14"
Spans 31' and up	8" x 14" x 16"

**DETAIL OF CLAMP**



Shop Paint: - One coat of red lead and raw linseed oil.

Field Paint: - Two coats of different colors as approved by the Engineer

DESIGNED - N.B.G.  
 TRACED - E.H.F.  
 CHECKED -  
 REVISIONS July 10, 1924