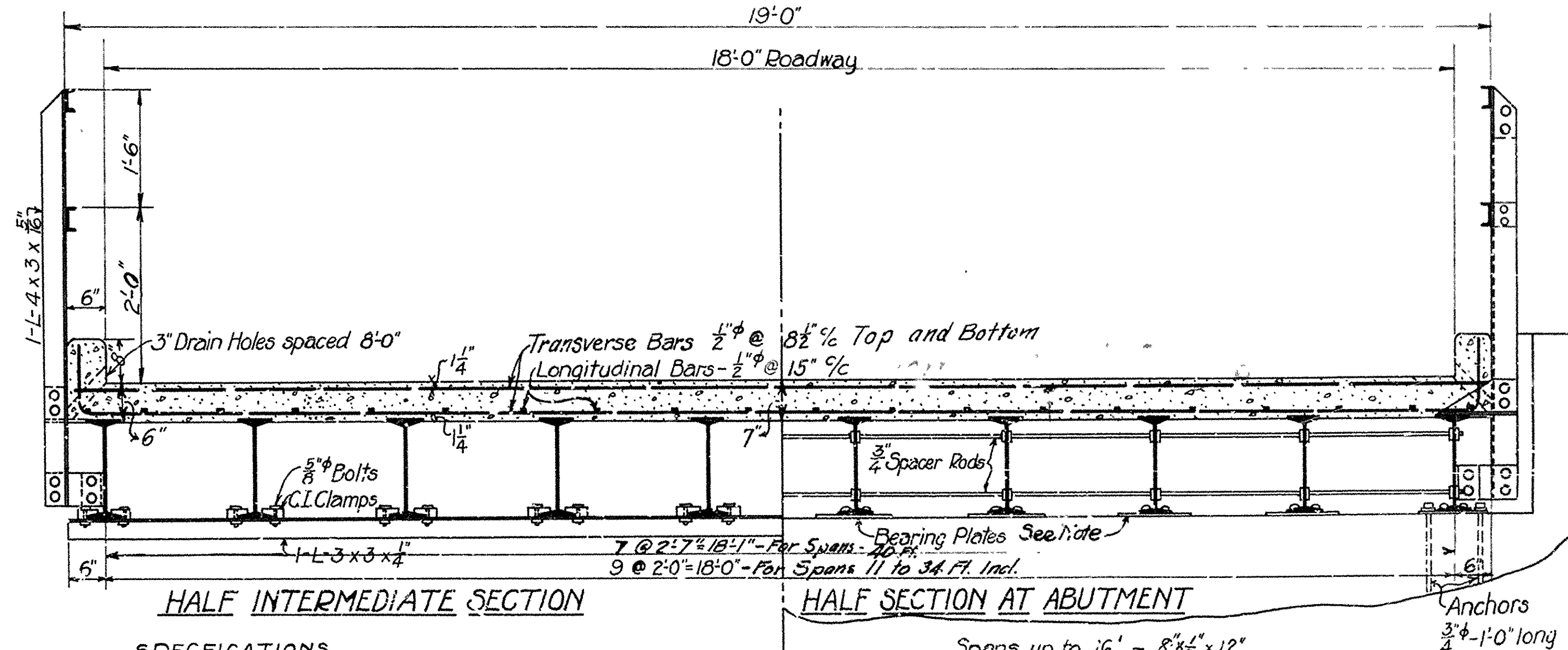
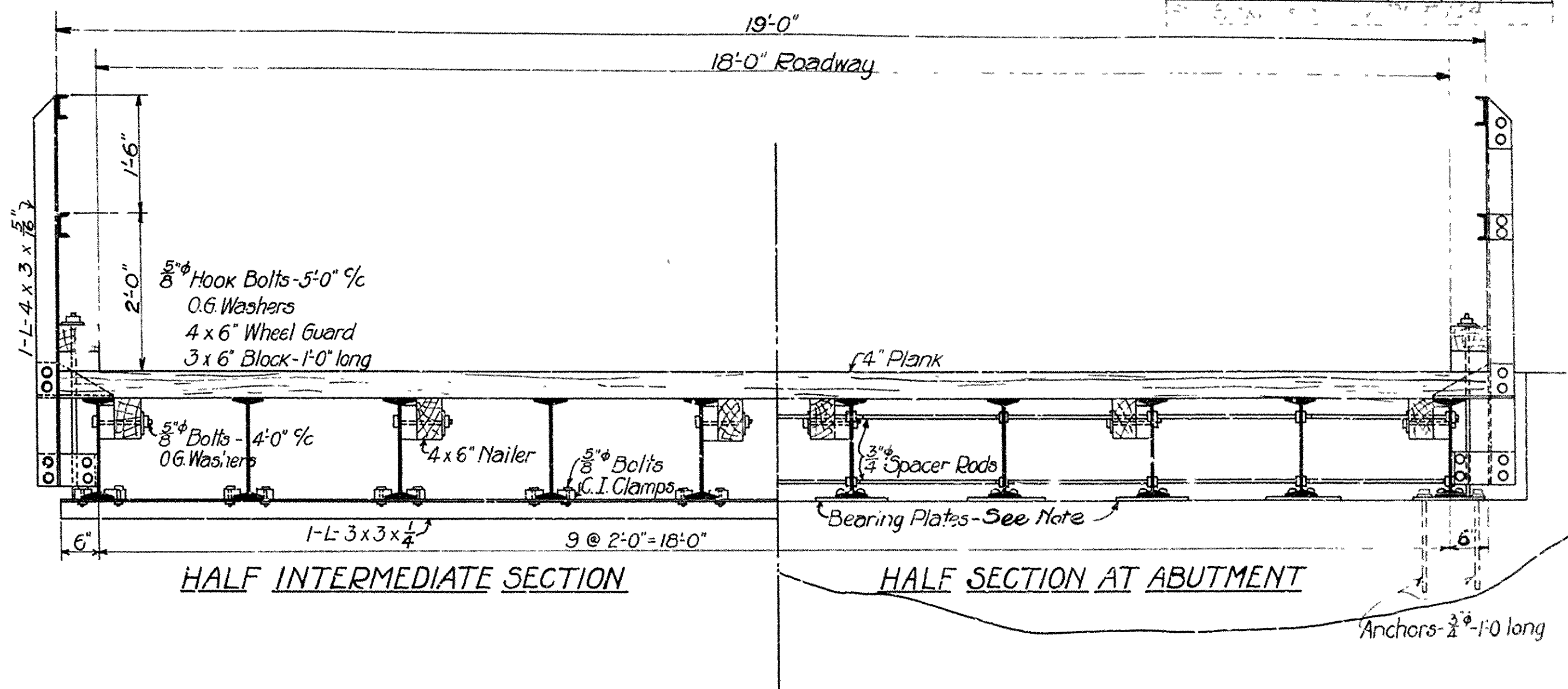
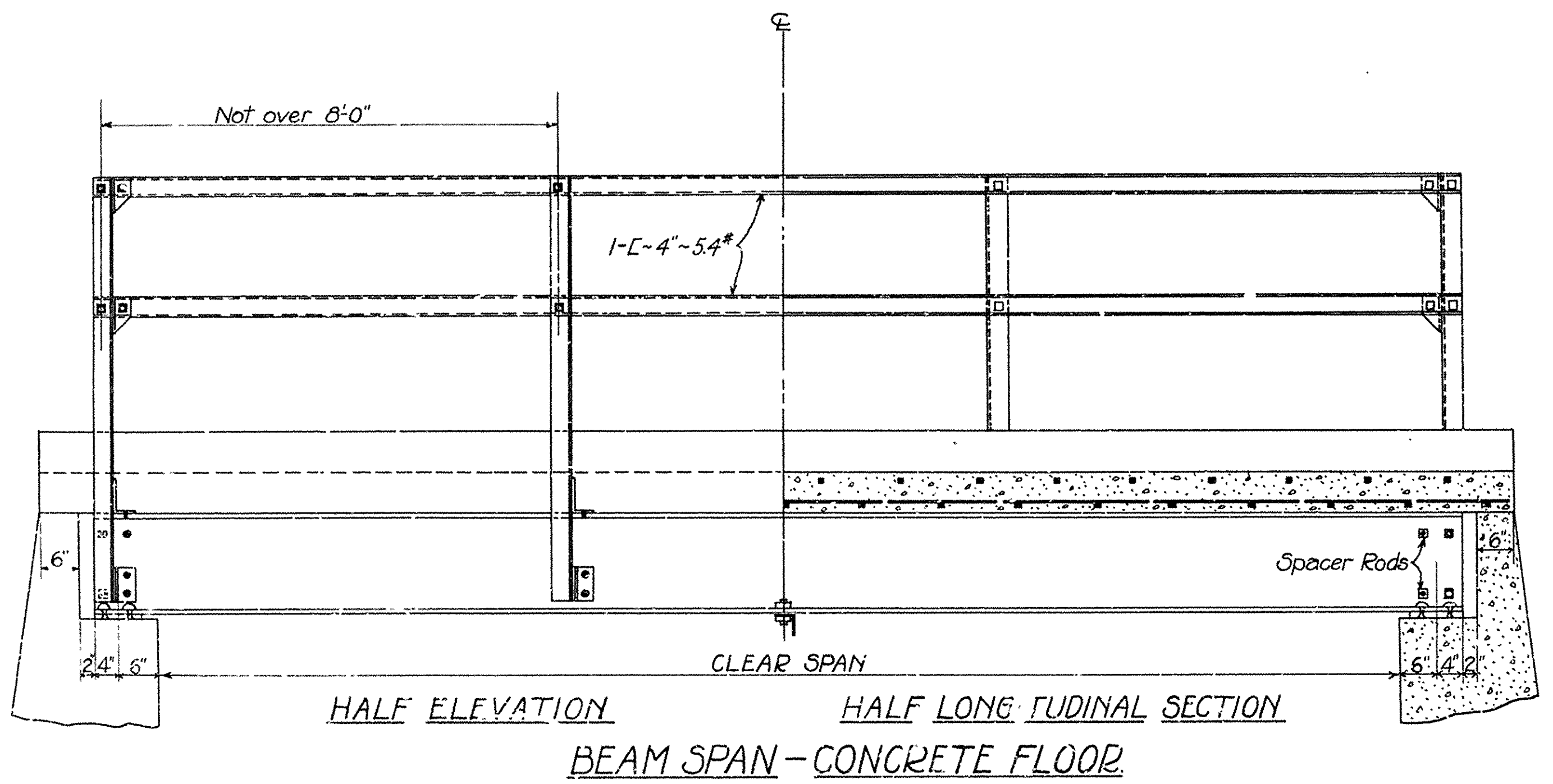
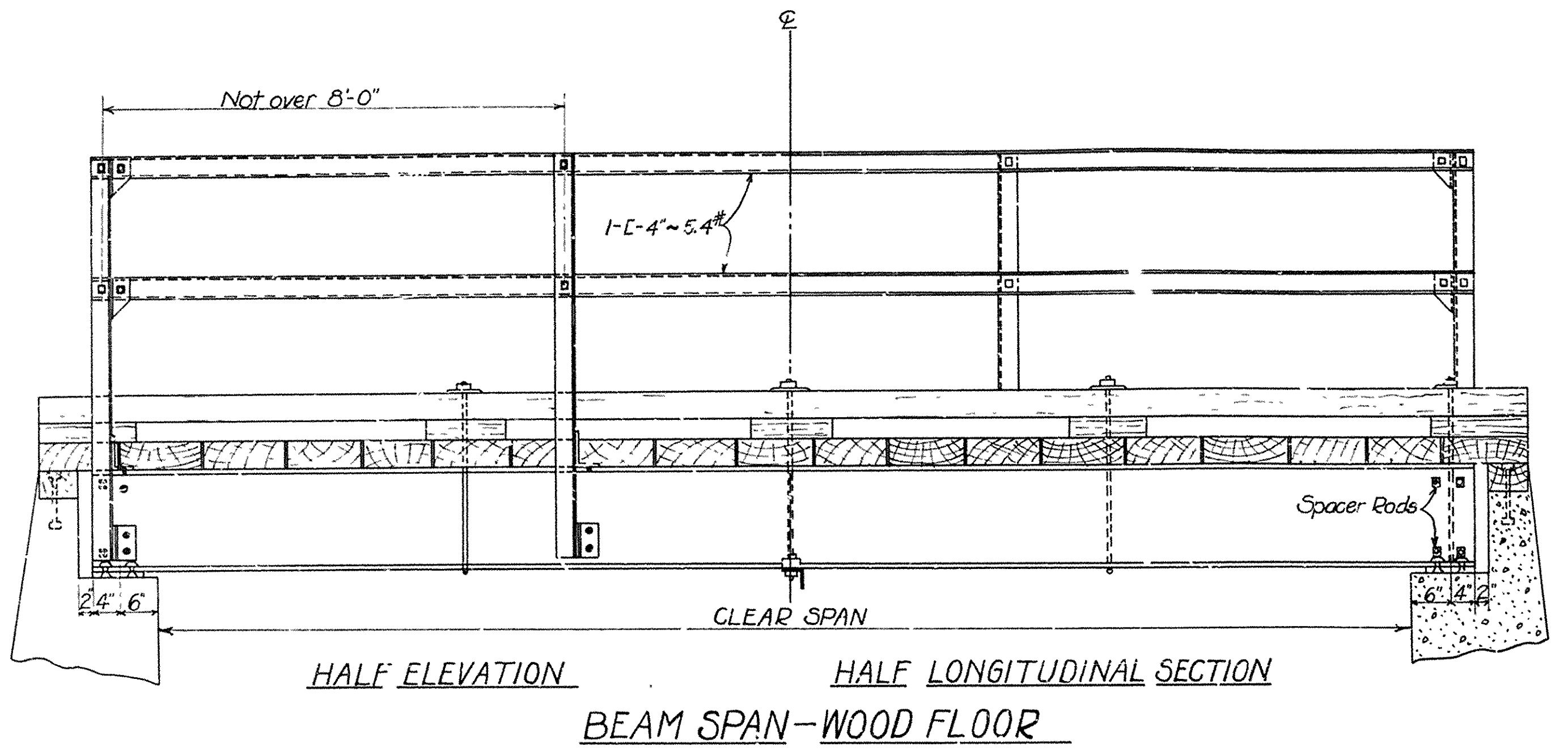
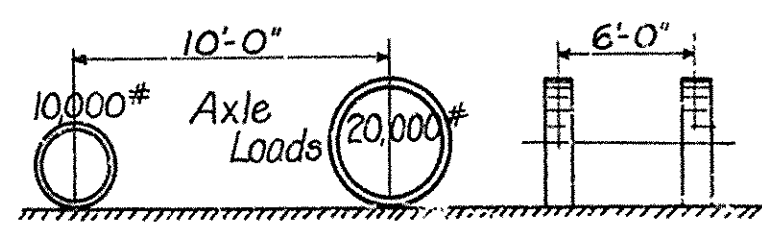


FED. AID PROJ. NO.	STATE	FED. ROAD DIST. NO.	FISCAL YEAR	SHEET NO.	TOTAL SHEETS
	ARK.	6			



SPECIFICATIONS
 Live Load: Uniform: 80 lbs. per sq ft of roadway
 Concentrated: Two 15-Ton Trucks as shown below

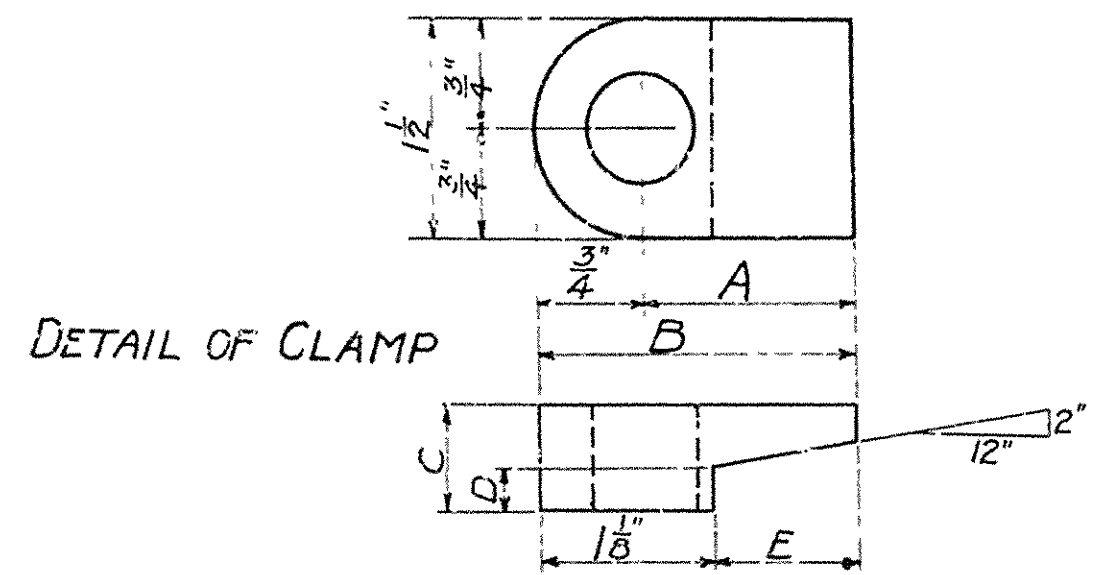


impact: 30% of live load.
 Unit Stresses: See Arkansas Highway Dept. Specifications.
 Distribution of concentrated load: For Wood Floor, Spacing of joists in inches divided by 42 - For Concrete Floor, Spacing of joists in inches divided by 54.
 Concrete Proportions: 1:2:4. If wear comes directly on floor slab increase thickness of slab 1" and use concrete proportions: 1-2-3.
 All field connections riveted, when other structural work requires field riveting, otherwise bolted.

BEARING PLATES

Spans up to 16'	8" x 12"
" 17' - 20'	8" x 14"
" 21' - 30'	8" x 16"
" 31' and up	8" x 16"

DESCRIPTION	STA TO STA



SIZE OF BEAM	DIMENSIONS OF CLAMP				
	A	B	C	D	E
8"	1 1/2"	2"	3/4"	1/2"	3/8"
9" & 10"	1 1/2"	2 1/4"	3/4"	5/8"	1/2"
12"	1 1/2"	2 1/2"	3/4"	3/4"	1/2"
15"	1 1/2"	2 3/4"	3/4"	3/4"	1/2"

CLEAR SPAN	SIZE OF 10 I-BEAMS		CLEAR SPAN	SIZE OF 10 I-BEAMS	
	WOOD FLOOR	CONC. FLOOR		WOOD FLOOR	CONC. FLOOR
11'	9"-21.8"	9"-21.8"	23'	15"-42.9"	15"-42.9"
12'	9"-21.8"	9"-21.8"	24'	15"-42.9"	15"-42.9"
13'	10"-25.4"	9"-21.8"	25'	15"-42.9"	15"-42.9"
14'	10"-25.4"	10"-25.4"	26'	15"-42.9"	15"-42.9"
15'	10"-25.4"	10"-25.4"	27'	15"-42.9"	15"-42.9"
16'	12"-31.8"	10"-25.4"	28'	15"-42.9"	15"-42.9"
17'	12"-31.8"	12"-31.8"	29'	15"-42.9"	15"-42.9"
18'	12"-31.8"	12"-31.8"	30'	15"-42.9"	15"-42.9"
19'	12"-31.8"	12"-31.8"	31'	15"-50.0"	15"-50.0"
20'	12"-31.8"	12"-31.8"	32'	15"-50.0"	15"-50.0"
21'	12"-31.8"	12"-31.8"	33'	18"-54.7"	18"-54.7"
22'	15"-42.9"	15"-42.9"	34'	18"-54.7"	18"-54.7"

CLEAR SPAN	SIZE OF 8 I BEAMS	
	WOOD FLOOR	CONC. FLOOR
40'	20"-65.4"	20"-65.4"

DESIGNED N.B.G.
 TRACED E.H.E.
 CHECKED _____
 REVISIONS by 10/22/22

Approved _____
 Commissioner State Lands, Highways & Improvements
 By: _____
 State Highway Engineer
 Dec. 1922

STATE STANDARD NO. 499-A