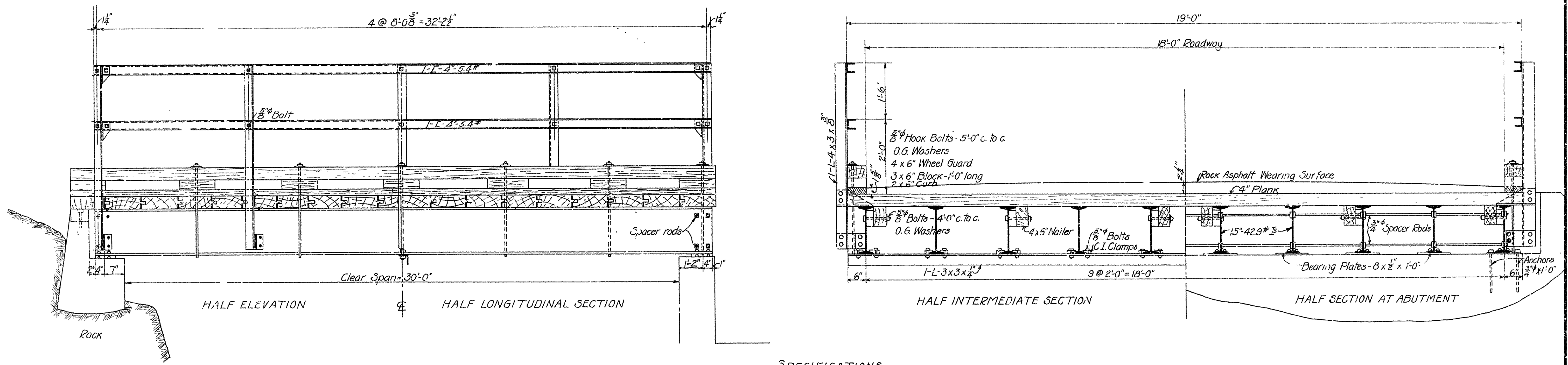
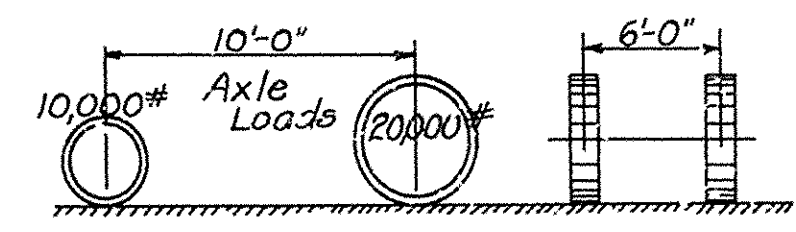


FED. ROAD DIST. NO.	STATE	FED. AID PROJ. NO.	FISCAL YEAR	SHEET NO.	TOTAL SHEETS
6	ARK	169	1922	3	7

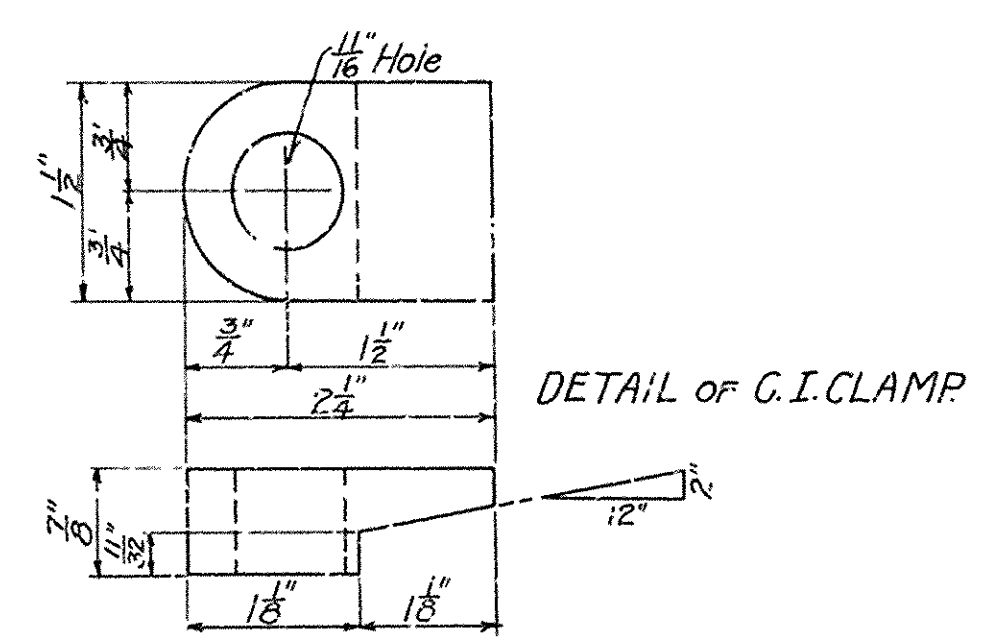


SPECIFICATIONS

Live Load :- Uniform, - 20 lbs. per square foot of roadway
 Concentrated, - Two 15-Ton Trucks as shown below.



Impact :- 30% of live load.
 Distribution of concentrated load as per specifications of U.S. Bureau of Public Roads
 Estimated weight of steel = 19,930:#
 All field connections riveted.
 Rock Asphalt Wearing Surface :- See Specifications
 Shop Paint :- One coat red lead and boiled linseed oil.
 Field Paint :- Two coats of different colors as approved by the engineer
 Lumber :- 3158 Ft. B.M.



STANDARD PLAN
STEEL BEAM BRIDGE - 18' ROADWAY
 ROCK ASPHALT WEARING SURFACE
 ARKANSAS HIGHWAY DEPARTMENT
 LITTLE ROCK, ARK.

Approved: _____
 Commissioner State Lands, Highways & Improvements

By: _____
 State Highway Engineer
 Nov. 1922.

DESIGNED	N.B.G.
TRACED	E.H.F.
CHECKED	
REVISIONS	12/1/23