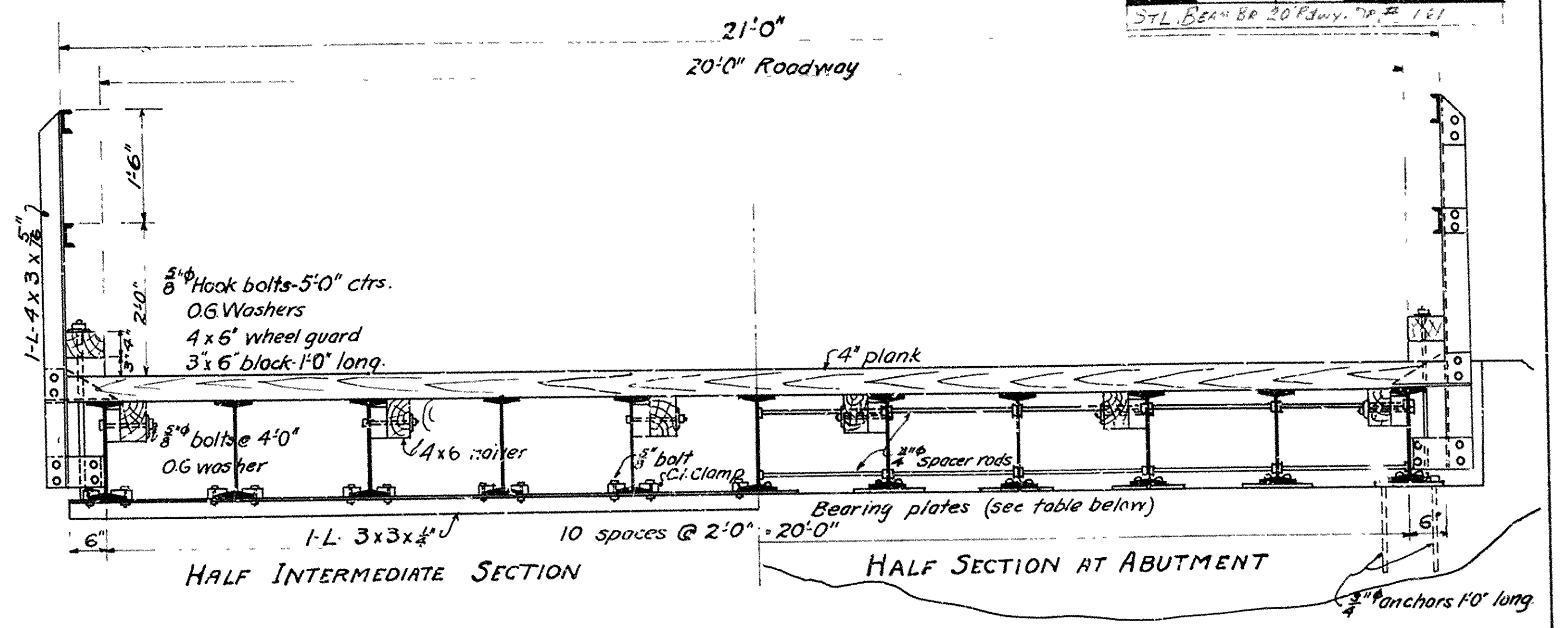
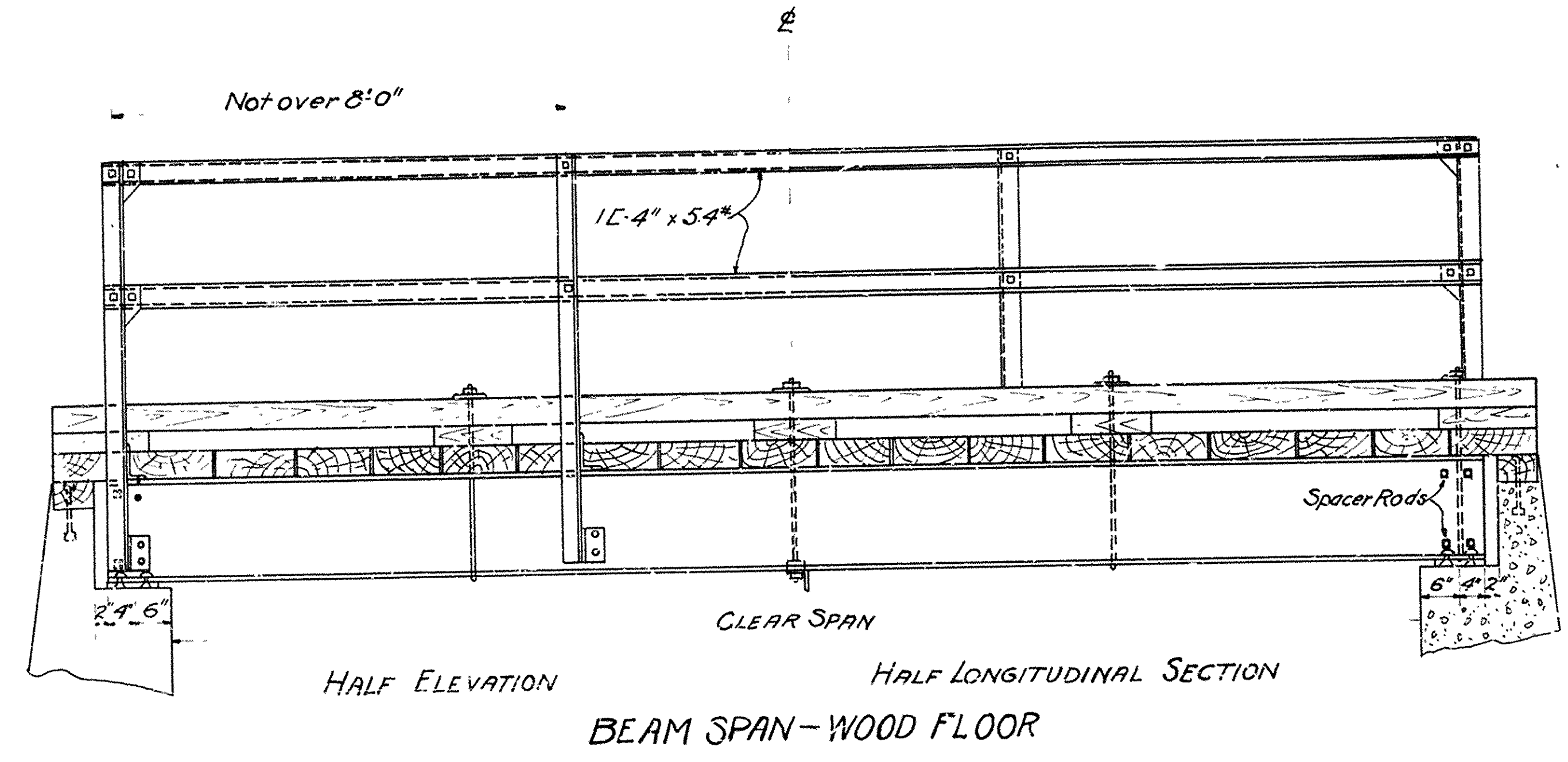


FED. AND PROJ. NO.	ST. / T. E.	FED. ROAD DIST. NO.	FED. ROAD YEAR	TOTAL SHEET NO.	TOTAL SHEETS
	ARK.	6			

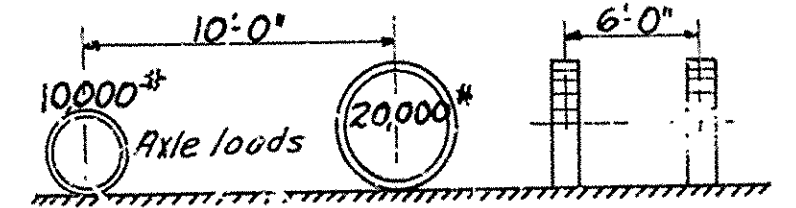
STL BEAM BR 20' ROADWAY, No. 121



BEAM SPAN - WOOD FLOOR

SPECIFICATIONS

Live Load: Uniform - 80 lbs. per sq ft of roadway.
 Concentrated: Two 15 Ton Trucks as shown below



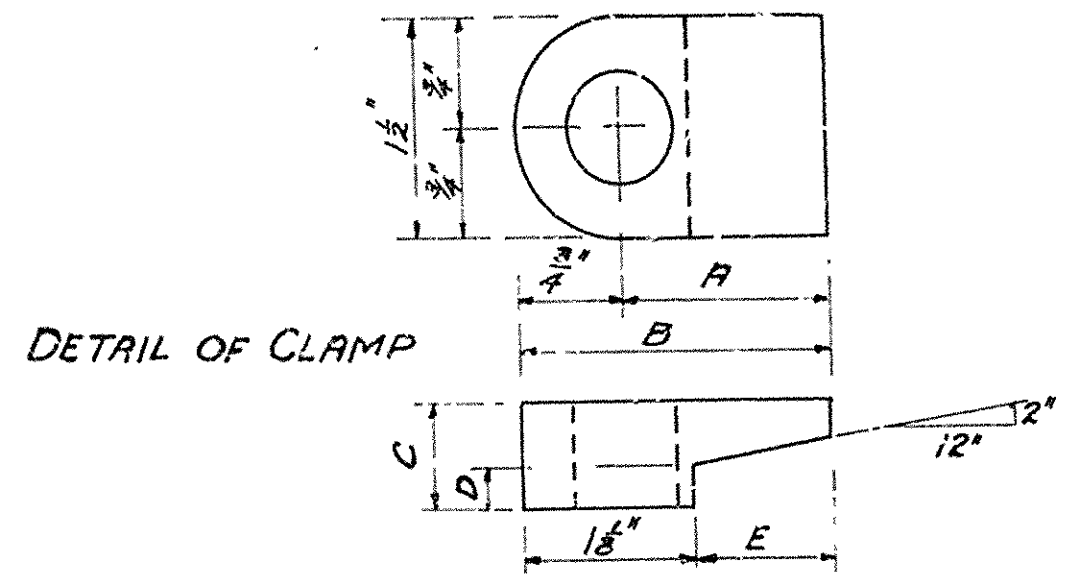
Impact: 30% of live load.
 Unit Stresses: See Arkansas Highway Dept. Specifications.
 Distribution of concentrated load: For wood floor: Spacing of joists in inches divided by 42. For concrete floor spacing of joists in inches divided by 54.
 Concrete Proportions: 1:2:4. If wear comes directly on floor slab increase thickness of slab 1" and use concrete proportions 1:2:3.
 All field connections riveted when other structural work requires field riveting, otherwise bolted.

**STANDARD PLAN
 STEEL BEAM BRIDGES - 20' ROADWAY
 ARKANSAS HIGHWAY DEPARTMENT.
 LITTLE ROCK, ARK.**

Approved
 Commissioner State Lands, Highways & Improvements.

By:
 State Highway Engineer.
 July 1926

STATE STANDARD No FI-599A



SIZE OF BEAM	DIMENSIONS OF CLAMP				
	A	B	C	D	E
18"	1 1/2"	2 1/2"	1 1/2"	1 1/2"	1 1/2"
15"	1 1/2"	2 1/2"	1 1/2"	1 1/2"	1 1/2"

CLEAR SPAN	SIZE OF 11 I-BEAMS		CLEAR SPAN	SIZE OF 11 I-BEAMS	
	WOOD FLOOR	CONC. FLOOR		WOOD FLOOR	CONC. FLOOR
			30'	15"	429#
			34'	18"	547#

BEARING PLATES	
Clear Span	Size of plates
27' to 30'	8 1/2" x 14"
31' to	10' x 16"