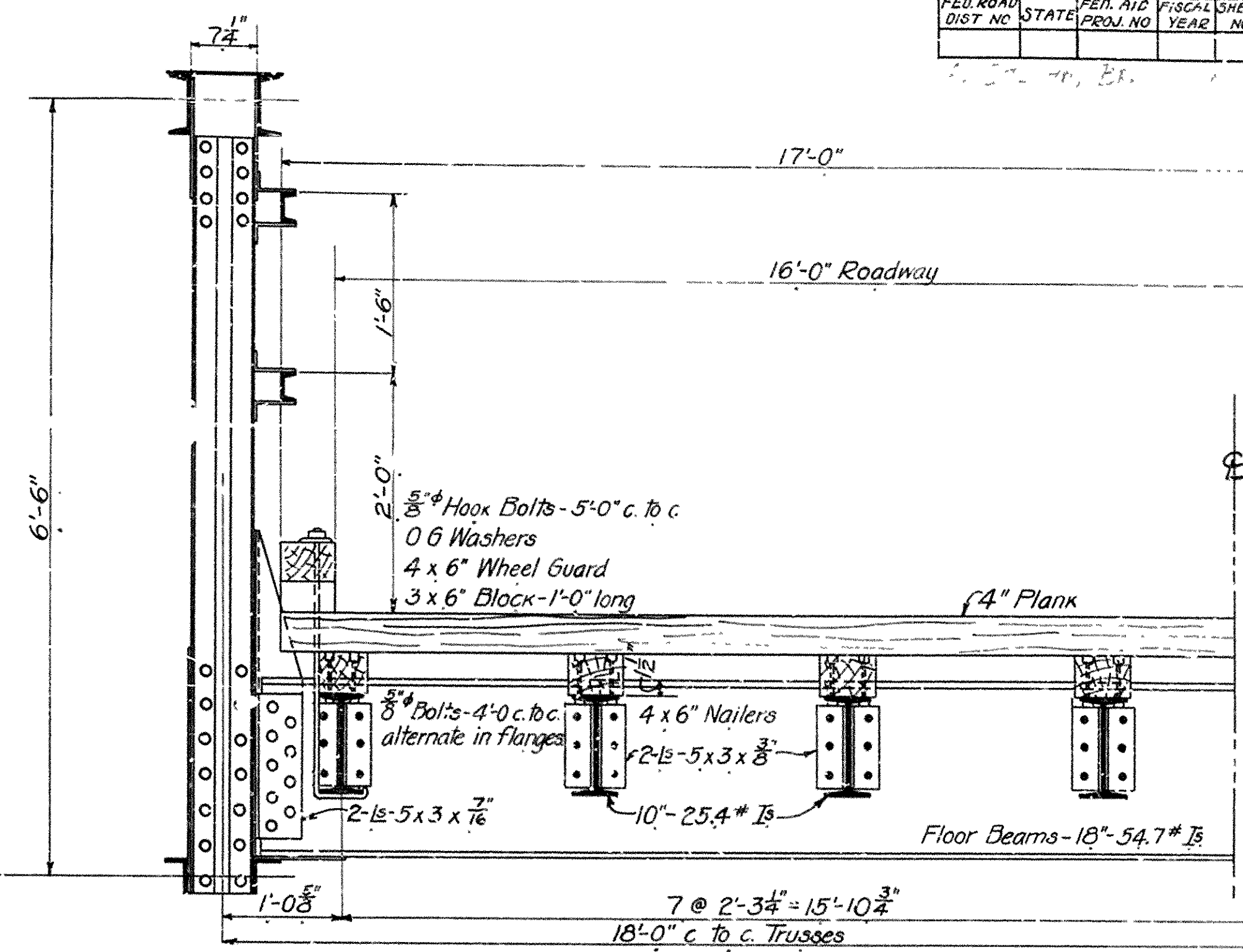
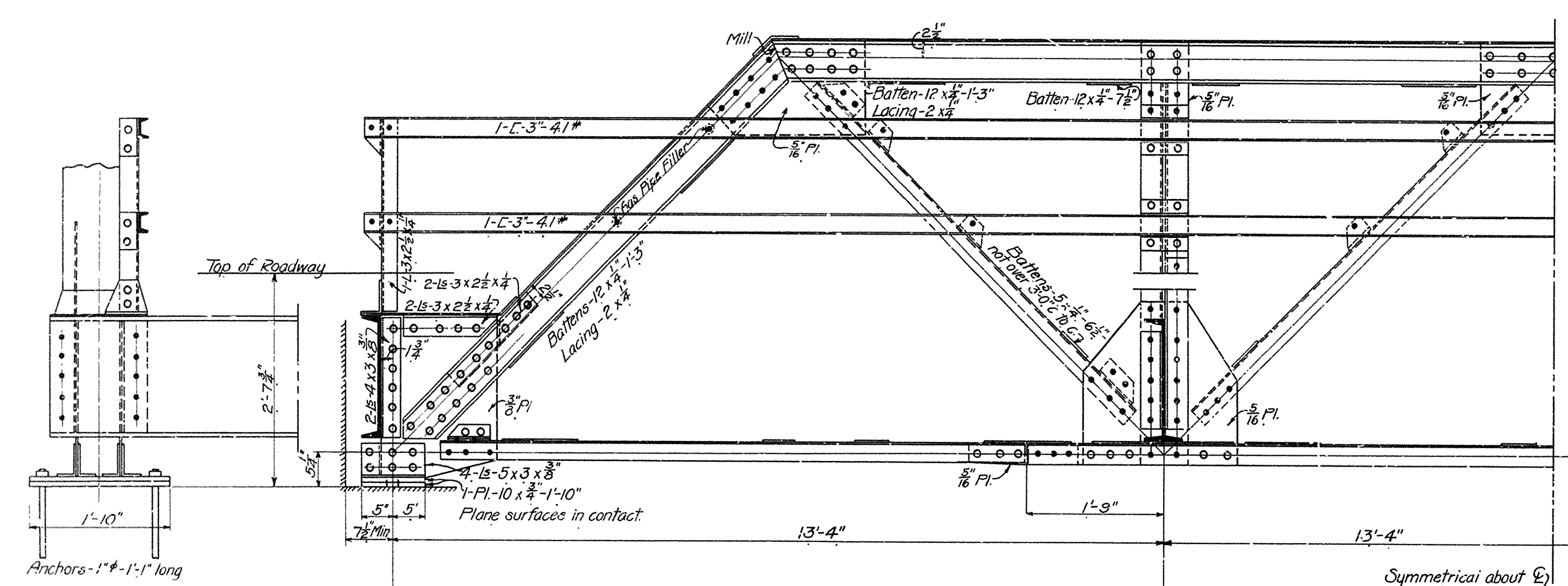


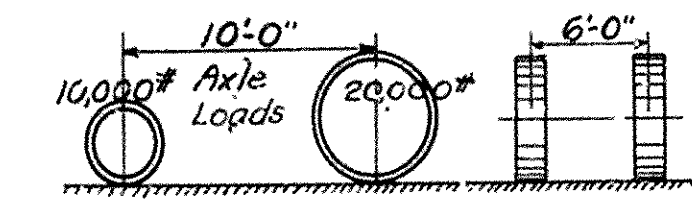
FED. ROAD DIST. NO.	STATE	FED. AID PROJ. NO.	FISCAL YEAR	SHEET NO.	TOTAL SHEETS



HALF SECTION

SPECIFICATIONS

Live Load - Uniform - 50 lbs per square foot of roadway.
 Concentrated - 15-Ton Truck as shown below.



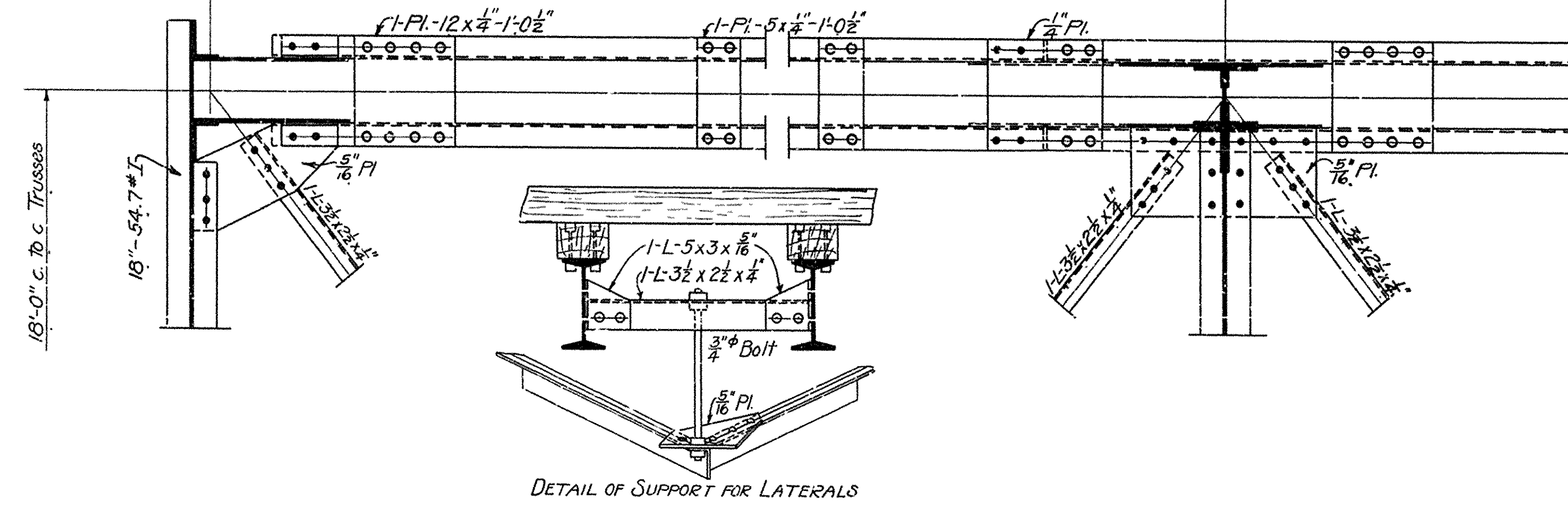
Impact - 30% of live load
 Unit Stresses - See Arkansas Highway Department Specifications.
 Rivets - 3/4" diam, except in flanges of channels.
 Open Holes - 1/8" diam.
 All field connections riveted. Rivet holes in tension members are to be so spaced that not more than one hole is deducted from area of cross-section of each angle at point of maximum stress.
 Shop Paint - One coat red lead and boiled linseed oil.
 Field Paint - Two coats of different colors as approved by the engineer.
 Batten plates spaced not more than 3'-0" c. to c.
 Estimated weight of steel = 21,530 #.
 Lumber = 3,710 Ft. B.M.

STRINGERS
 D.L.M. = 3/8 x 75 x 13.33 = 1,670 #
 L.L. = 3/8 x 5620 x 13.33 = 18,750
 Impact 30% = 3,625
 Total = 26,045 #
 26,045 x 12 = 196 = Sec. Mod. Req'd.
 16,000

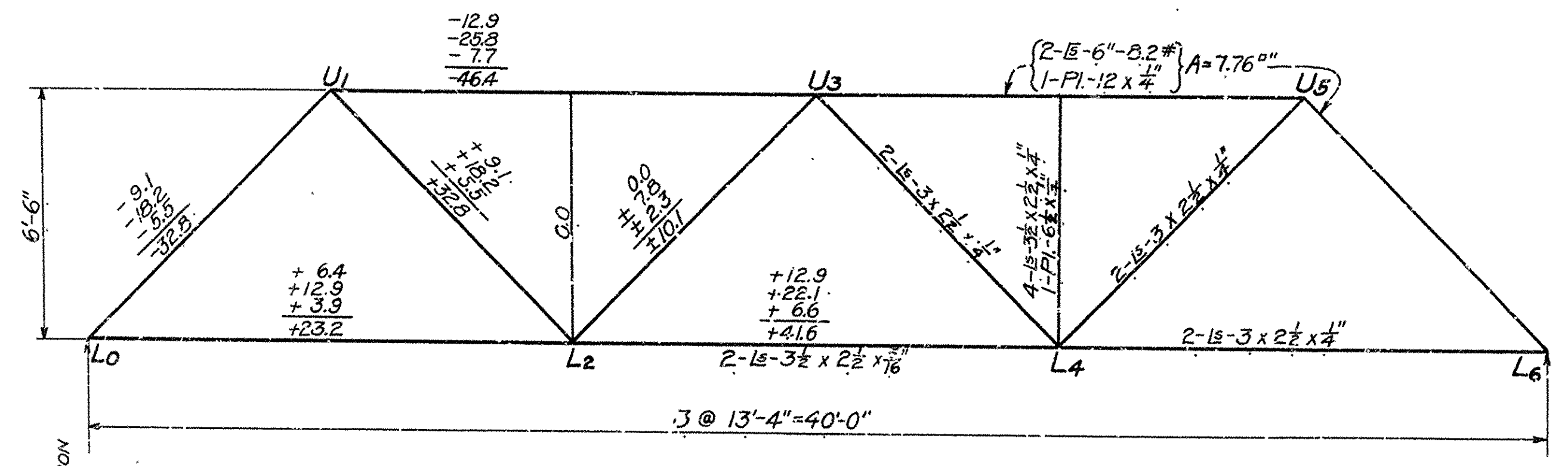
FLOOR BEAMS
 D.L.M. = 5/8 x 498 x 13 = 20,200 #
 L.L.M. = 7/8 x 9400 = 70,500
 Impact 30% = 21,150
 Total = 111,850 #
 111,850 x 12 = 84.0 = Sec. Mod. Req'd.
 16,000

Use 10" - 25.4 # I - Sec. Mod. = 24.4
 Use 18" - 54.7 # I - Sec. Mod. = 50.4

NOTE: This drawing is general only. Shop drawings must be made in compliance with specifications and must be submitted and approved before fabrication begins.



DETAIL OF SUPPORT FOR LATERALS



STANDARD PLAN

40-FT. STEEL HIGHWAY BRIDGE
 16' ROADWAY

ARKANSAS HIGHWAY DEPARTMENT
 LITTLE ROCK, ARK.

DESIGNED N.B.G.
 TRACED E.H.F.
 CHECKED
 REVISIONS

Approved: _____
 Commissioner State Lands, Highways & Improvements

By: _____
 State Highway Engineer
 Sept. 1922.

STATE STANDARD No. F-304-A