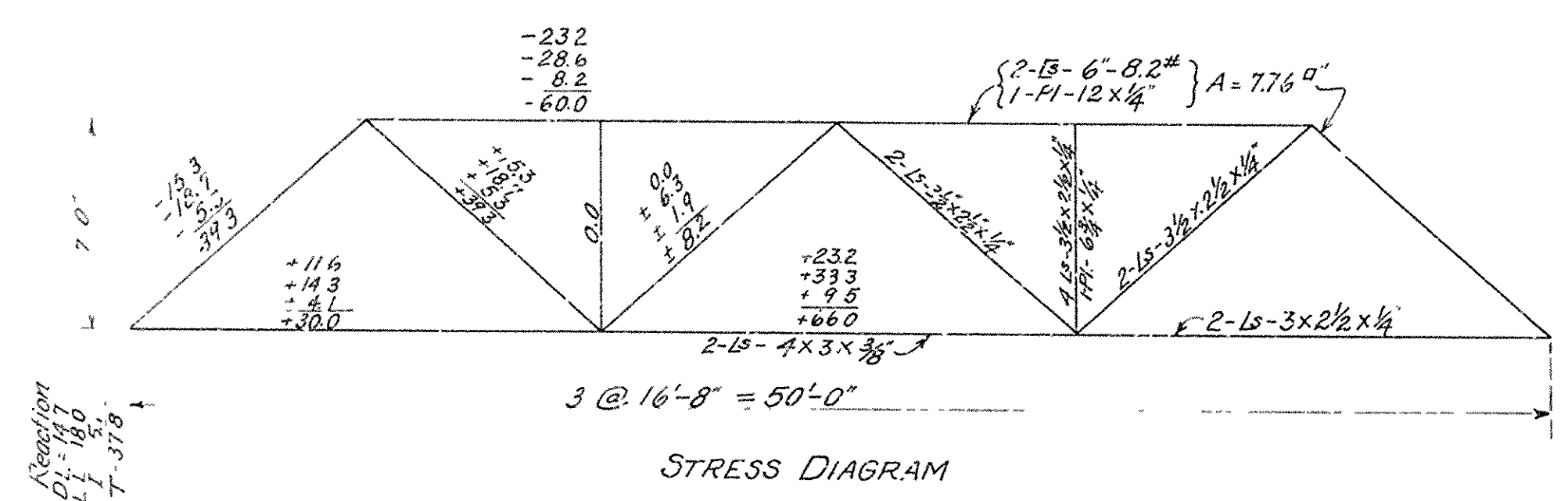
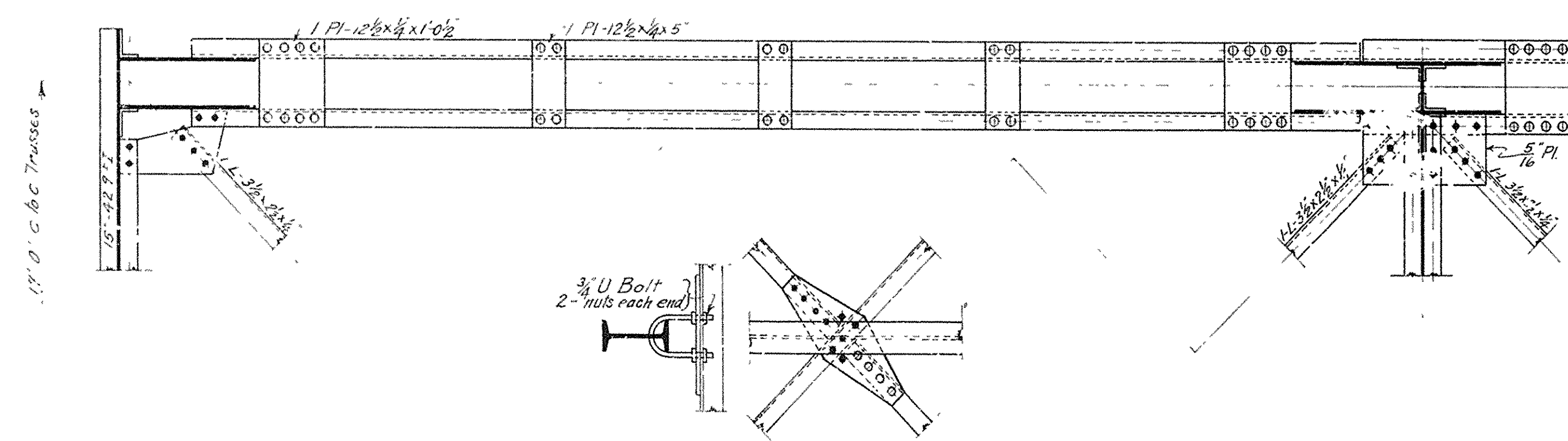
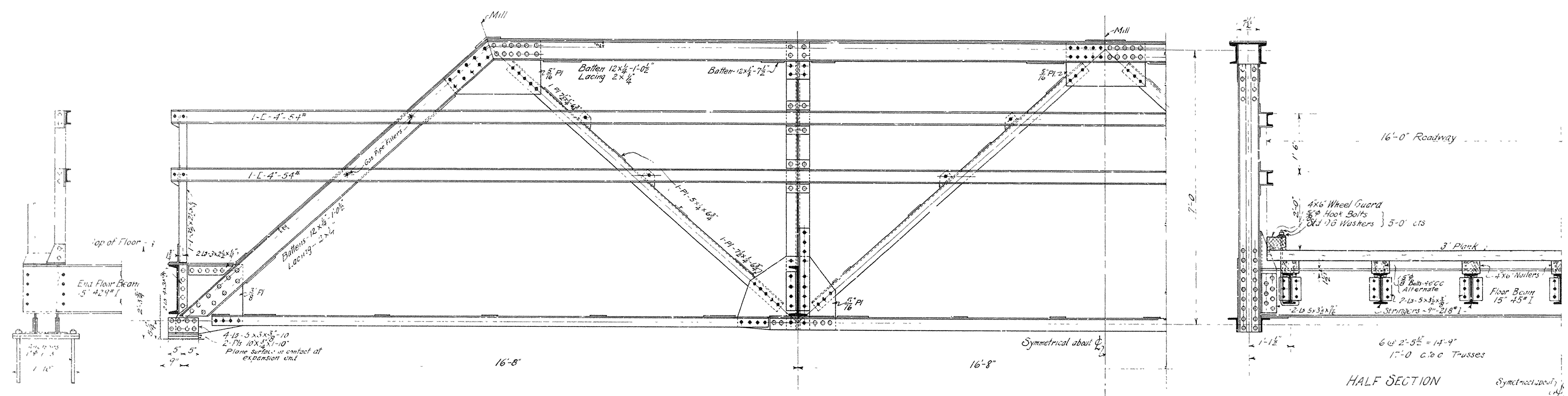


FED. ROAD DIST. No.	STATE	FED. AID PROJ. No.	FISCAL YEAR	SHEET No.	TOTAL SHEETS
6	ARK.				



**STRINGERS**  
 D.L.M. =  $\frac{1}{8} \times 69 \times 16.67^2 = 2390\#$   
 L.L.M. =  $\frac{1}{4} \times 4100 \times 16.67 = 17,100\#$   
 Impact = 30% = 5,130\#  
 24,620\#  
 $\frac{24,620 \times 12}{16,000} = 18.5 = \text{Sec. Mod. Reqd.}$   
 Use 9" - 21.8# I<sup>s</sup> - Sec. Mod = 18.9

**FLOOR BEAMS**  
 D.L.M. =  $\frac{1}{8} \times 575 \times 17^2 = 20,750\#$   
 L.L.M. = 7 x 6600 = 46,200\#  
 Impact = 30% = 13,860\#  
 80,810\#  
 $\frac{80,810 \times 12}{16,000} = 60.5 = \text{Sec. Mod. Reqd.}$   
 Use 15" - 45# I<sup>s</sup> - Sec. Mod = 60.5

**SPECIFICATIONS.**  
 Live Load - Uniform - 80# per sq. ft. of Roadway  
 Concentrated - 1-10 Ton Truck as shown below

Impact =  $\frac{100S}{L+300}$

Unit Stresses - See Arkansas Highway Department Specifications.  
 Rivets -  $\frac{3}{4}$ " diam, except in flanges of 3" Ls.  
 Open Holes -  $\frac{1}{8}$ " diam, except in flanges of 6" Ls.  
 All field connections riveted. Rivet holes in tension members are to be so spaced that not more than one hole is deducted from the area of cross-section of each angle at the point of maximum stress.  
 Shop Paint - One coat red lead and boiled linseed oil.  
 Field Paint - Two coats of different colors as approved by the engineer.  
 Batten plates spaced not over 3'-0" c to c. on tension members.

**ESTIMATED QUANTITIES**  
 Structural Steel, Lbs. ~ 22,000  
 Lumber - Ft. B.M. ~ 3,430

**NOTE:**  
 This drawing is general only. Shop drawings must be made in compliance with the specifications, submitted, and approved before fabrication is begun.

**STANDARD PLAN**  
**50 FT. STEEL HIGHWAY BRIDGE**  
**16 FT. ROADWAY - WOOD FLOOR**  
**ARKANSAS HIGHWAY DEPARTMENT**  
**LITTLE ROCK, ARK.**

Designed By N.B.G.  
 Drawn By N.B.G. Traced By M.P.M.  
 Checked By \_\_\_\_\_  
 Revisions \_\_\_\_\_

APPROVED: \_\_\_\_\_  
 CHAIRMAN, ARKANSAS STATE HIGHWAY COMMISSION

APPROVED: \_\_\_\_\_  
 STATE HIGHWAY ENGINEER

RECOMMENDED FOR APPROVAL: \_\_\_\_\_  
 STATE HIGHWAY BRIDGE ENGINEER

December 23, 1924