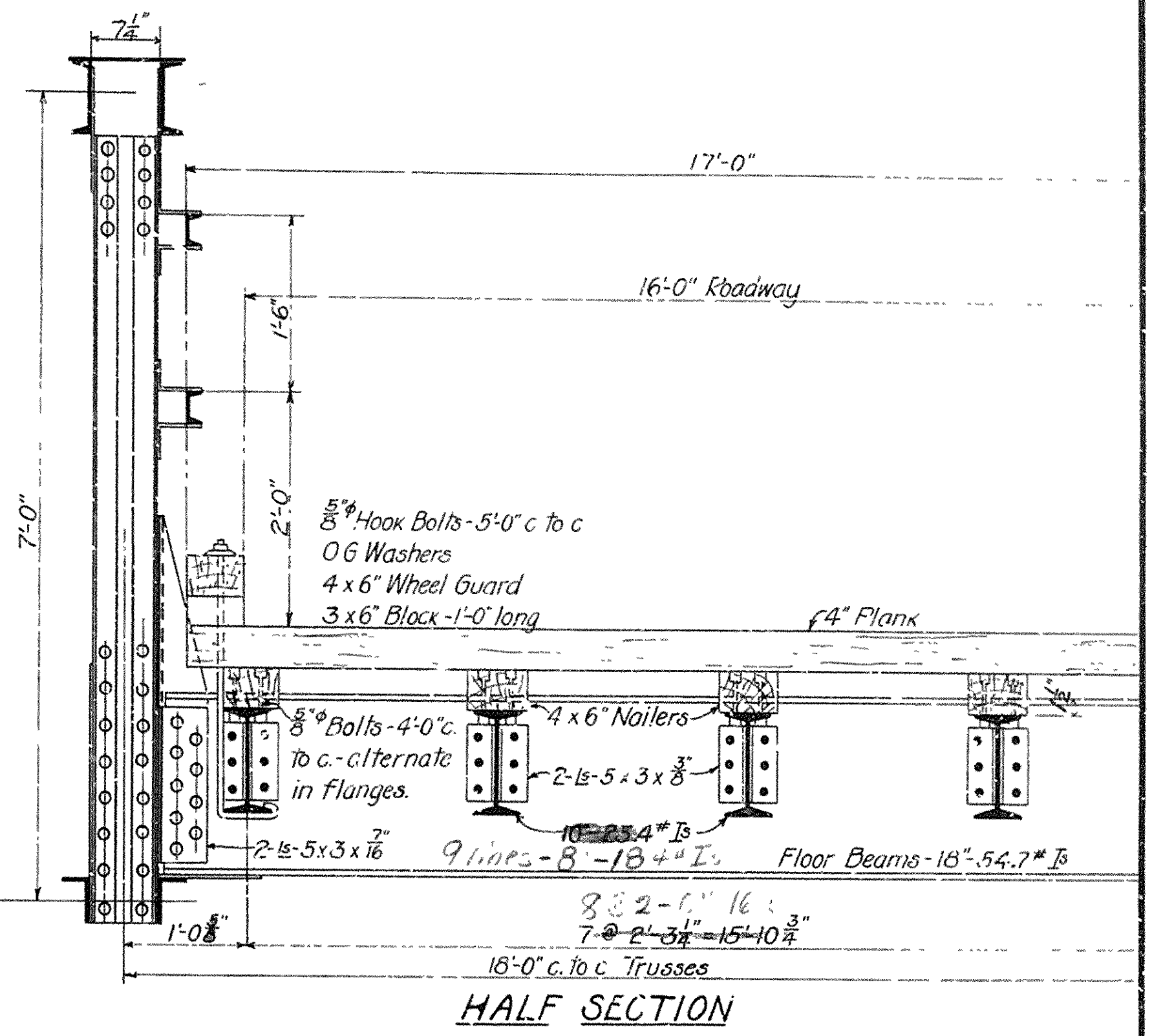
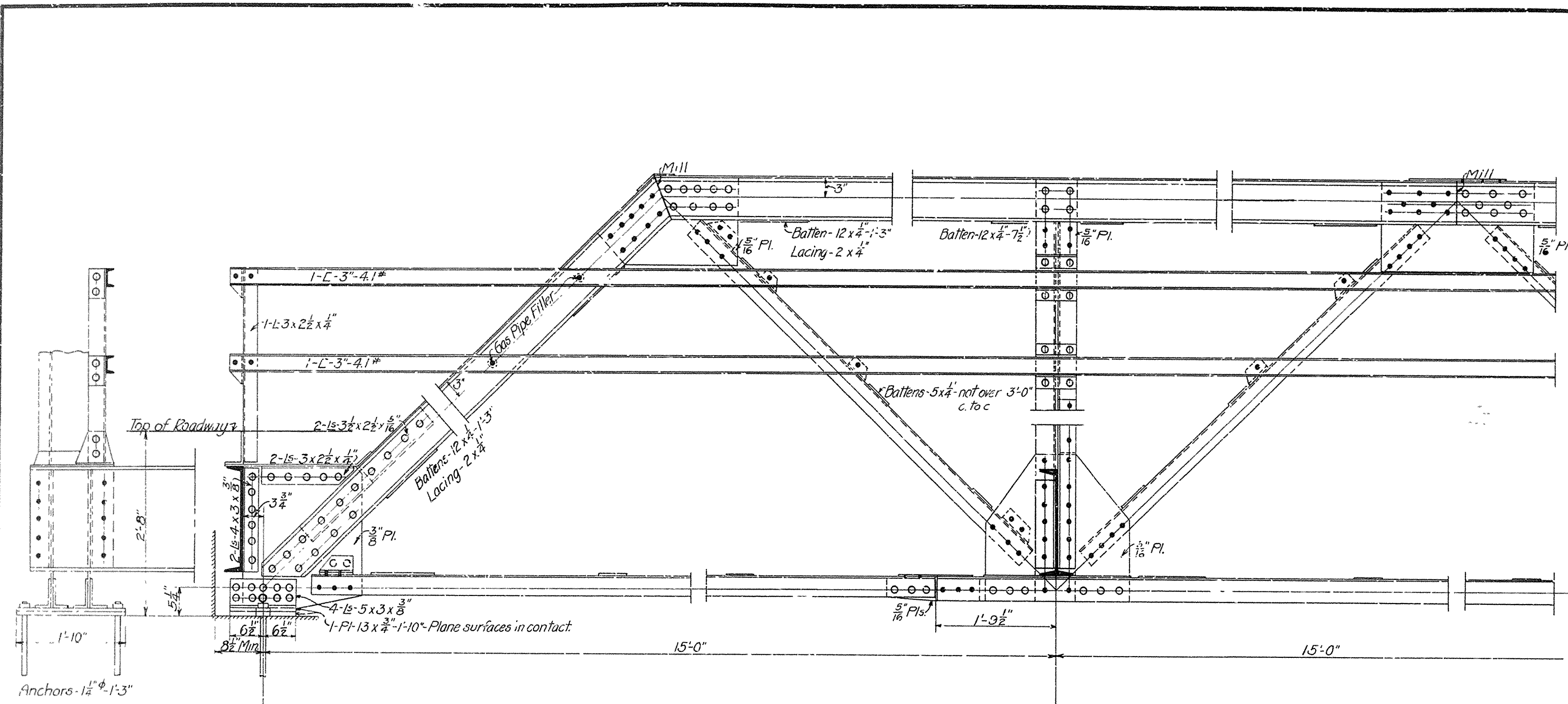


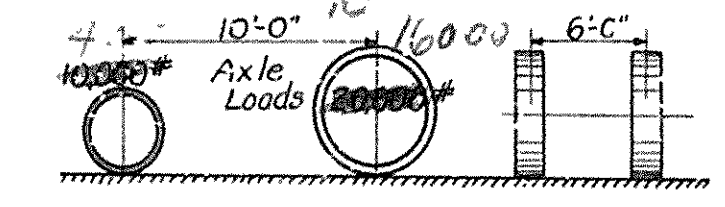
FED. ROAD DIST. NO.	STATE	FED. AID FISCAL YEAR	SHEET TOTAL
			NO. SHEETS



HALF SECTION

SPECIFICATIONS

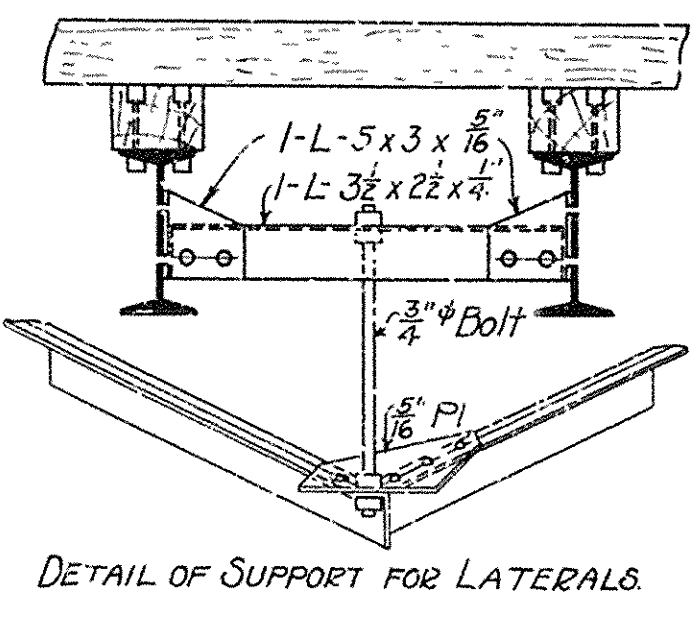
Live Load - Uniform, - 80 lbs. per square foot of roadway  
 Concentrated - 16,000 lb. Truck as shown below



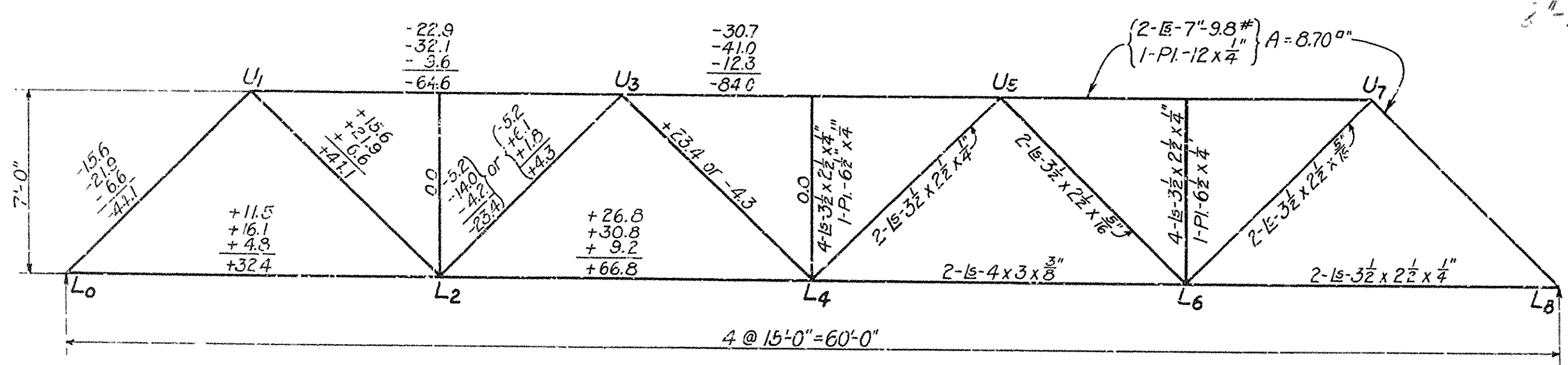
Impact - 50% of live load  
 Unit Stresses - See Arkansas Highway Department Specifications  
 Rivets - 3/4\" diam. except in flanges of 7\" channels  
 Open Holes - 1/8\" diam.  
 All field connections riveted. Rivet holes in tension members are to be so spaced that not more than one hole is deducted from area of cross-section of each angle at point of maximum stress.  
 Shop Paint - One coat of red lead and boiled linseed oil  
 Field Paint - Two coats of different colors as approved by the engineer.  
 Batten plates spaced not over 3'-0\" c. to c.  
 Estimated weight of steel = 33,350 #. 31/24  
 Lumber = 5,495 Ft. B.M.

**STRINGERS**  
 D.L.M. = 5/8 x 75 x 15<sup>2</sup> = 2,110 #  
 L.L.M. = 1/4 x 5620 x 15 = 21,100  
 Impact 30% = 6,330  
 Total = 29,540 #  
 29,540 x 12 / 16,000 = 22.1 = Sec. Mod. Req'd.  
 Use 12-15-3 x 2 1/2 # I - Sec. Mod. = 24.4  
 3\" - 13.4\"

**FLOOR BEAMS**  
 D.L.M. = 8 x 55.5 x 18<sup>2</sup> = 22,500 #  
 L.L.M. = 7/8 x 9750 = 73,100  
 Impact 30% = 21,930  
 Total = 117,530 #  
 117,530 x 12 / 16,000 = 88.2 = Sec. Mod. Req'd.  
 Use 18\" - 54.7 # I - Sec. Mod. = 88.4



DETAIL OF SUPPORT FOR LATERALS



END REACTION  
 DL = 14.6  
 LL = 20.4  
 I = 6.1  
 7 = 41.1

NOTE - This drawing is general only. Shop drawings must be made in compliance with specifications and must be submitted and approved before fabrication begins.  
 All rivet holes in main members to be saw, reamed 3/16\" and rounded to 1/4\"

STANDARD PLAN

60-FT. STEEL HIGHWAY BRIDGE  
 16' ROADWAY  
 ARKANSAS HIGHWAY DEPARTMENT  
 LITTLE ROCK, ARK.

Approved - Commissioner State Lands, Highways & Improvements

DESIGNED	N.B.G.
TRACED	E.H.F.
CHECKED	
REVISIONS	

By - State Highway Engineer  
 October, 1922.