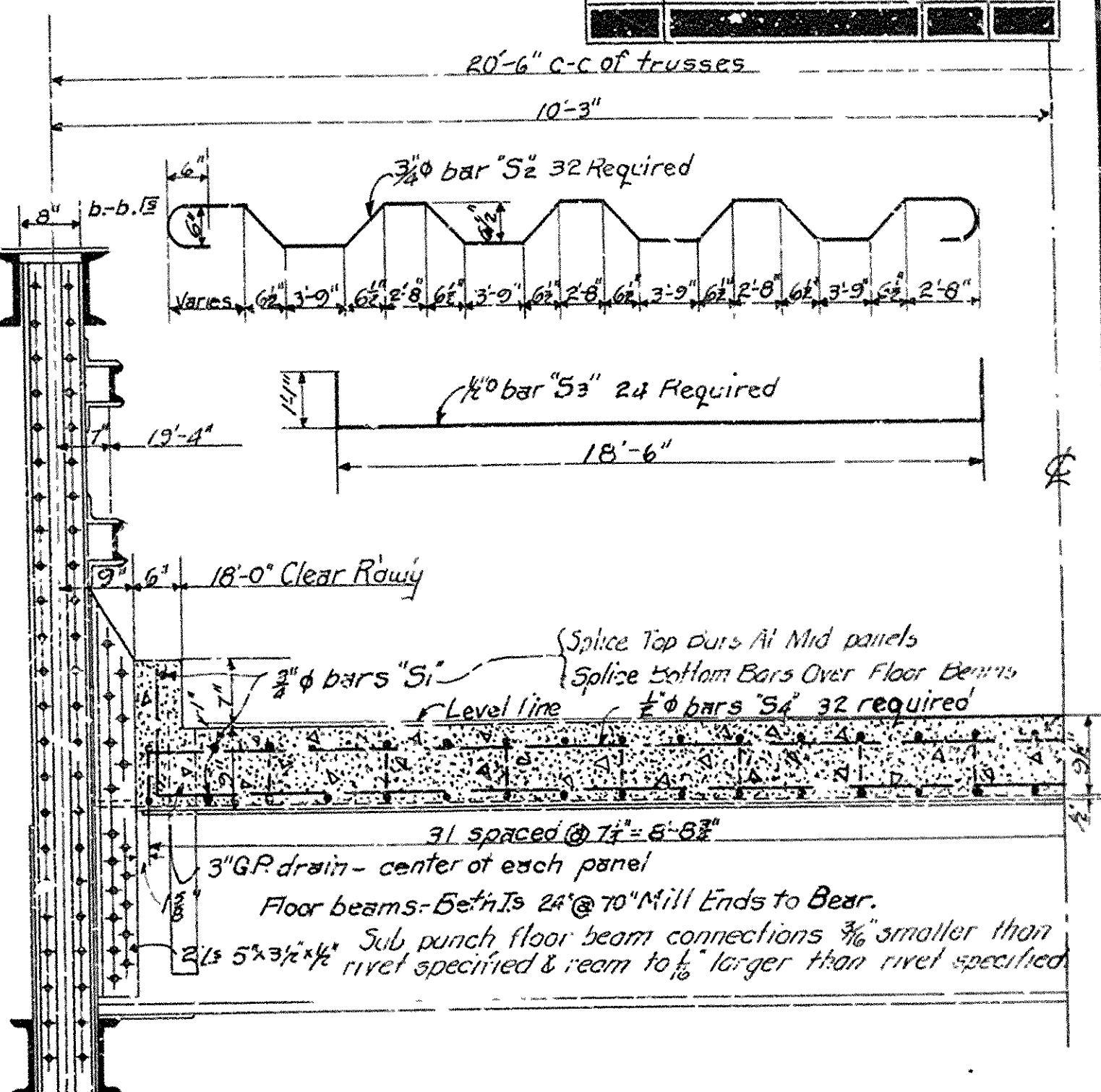
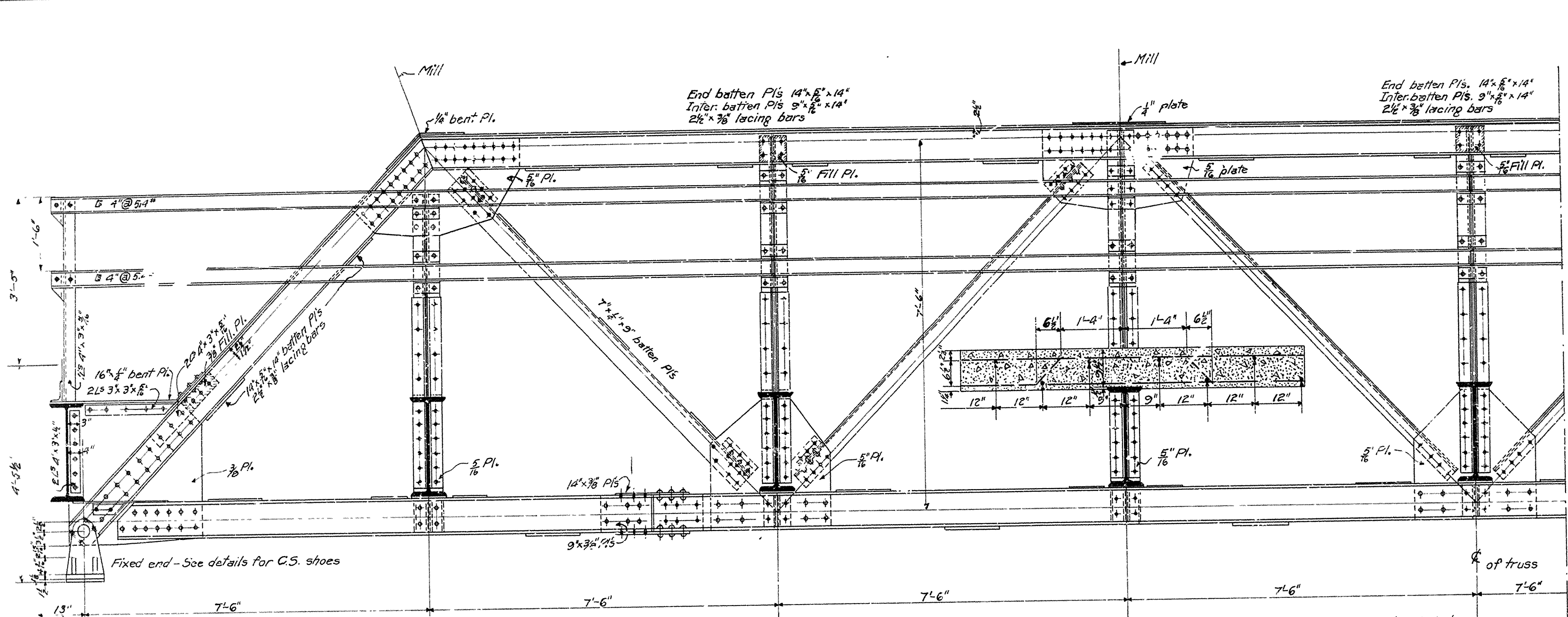


FISCAL YEAR	Job No.	SHEET NO.	TOTAL SHEETS
-------------	---------	-----------	--------------



HALF SECTION AT C OF BRIDGE

SPECIFICATIONS

TOTAL WHEEL LOADS

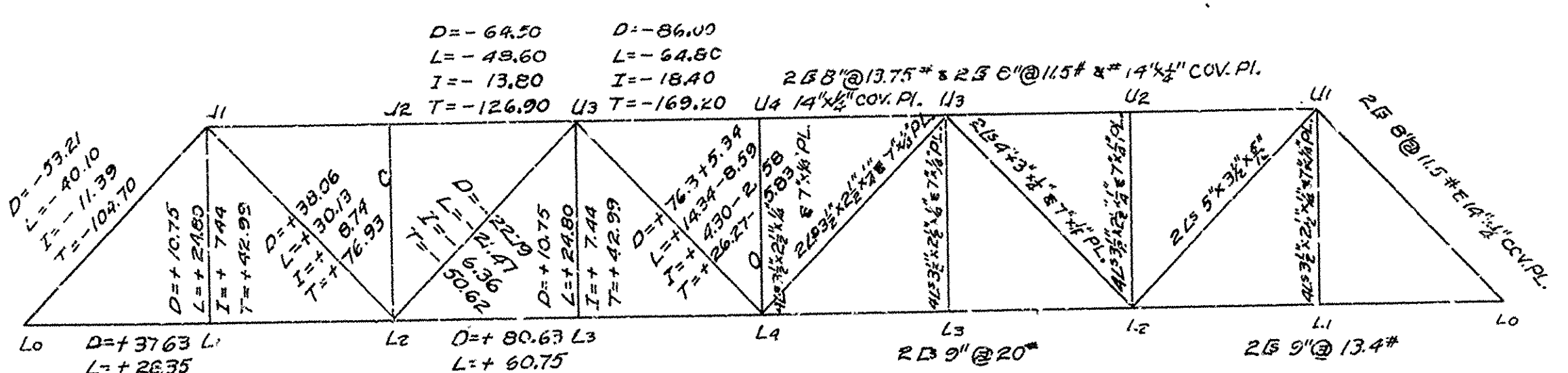
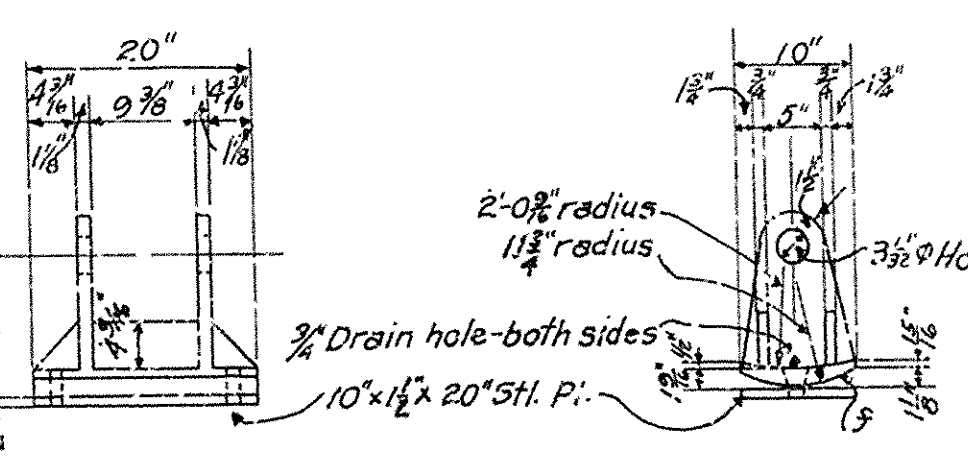
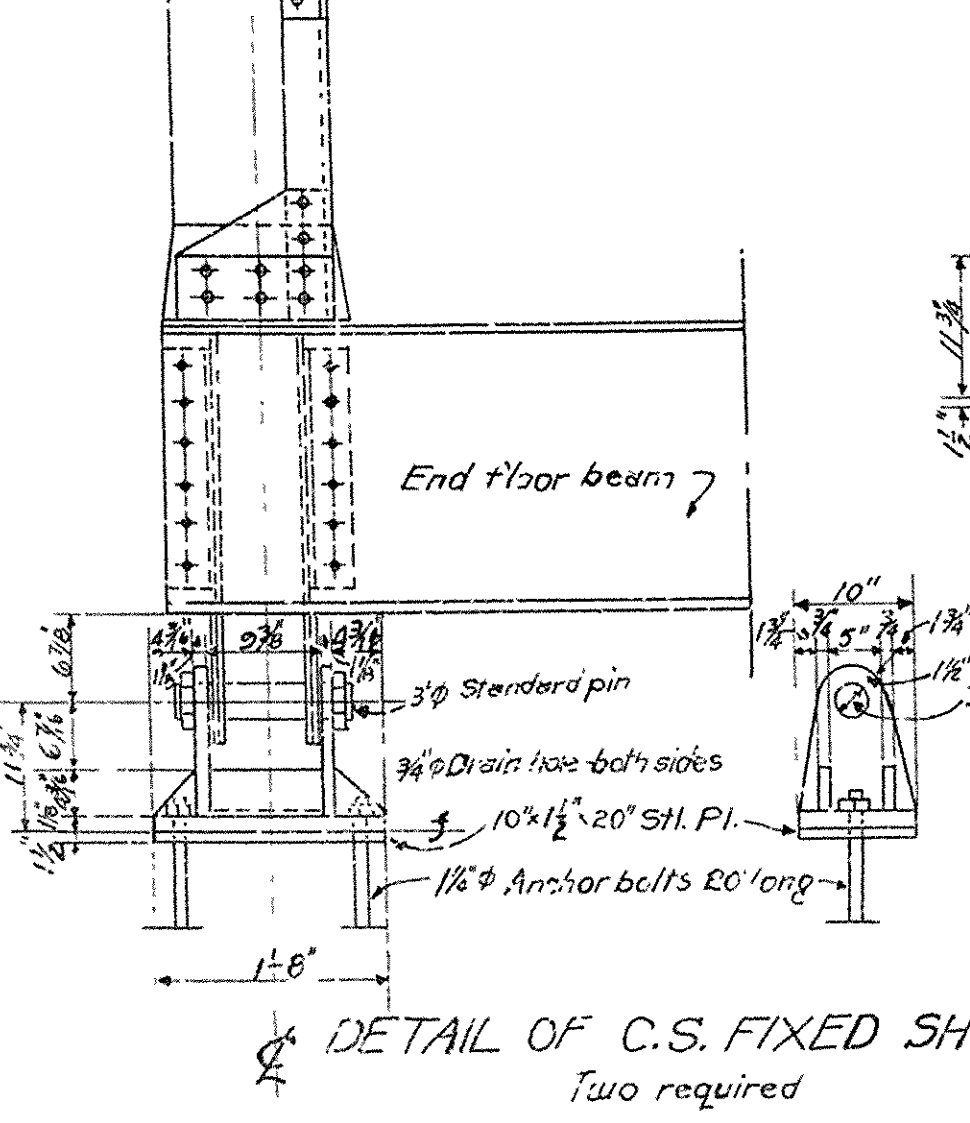
Live load - uniform - 100 Lbs. per Sq. Ft. Rdwy. Concentrated - 2-15 ton trucks as shown. Impact = 100 ± L + 300.

Unit stresses, Concrete 810 #/sq. Reinf. steel 18000 #/sq. Struct. steel 18000 #/sq. Rivets to be 3/4" in Diam.

Rivet holes: Sub punch all rivet holes in main truss connections (with shop field) 1/8" larger than rivet specified & ream to 1/8" larger than rivet specified after assembly in shop, and match marked. All field connections riveted. Rivet holes in tension members so spaced that only one hole is deducted from each angle at the point of maximum stress. Deduct two Web Holes and one Flange hole from each channel at point of maximum stress. Shop paint: One coat of "Red Lead" and raw linseed oil. Field paint: Two coats of different color as approved by the Engineer. Batten plates to be spaced not over 3'-0" Ctr's on tension members. Concrete Floor Slab - Class "S". Extra 1" added for wear. Stringers & Floor Beams to be milled to exact length. Members of equal or greater strength may be used in place of members shown here, but payment will be made in accordance with size shown on this plan. This drawing is general only. Shop drawing must be made in compliance with specifications, must be submitted and approved before fabrication begins. Specifications Arkansas State Highway Specifications adopted May 30, 1925 and Revised

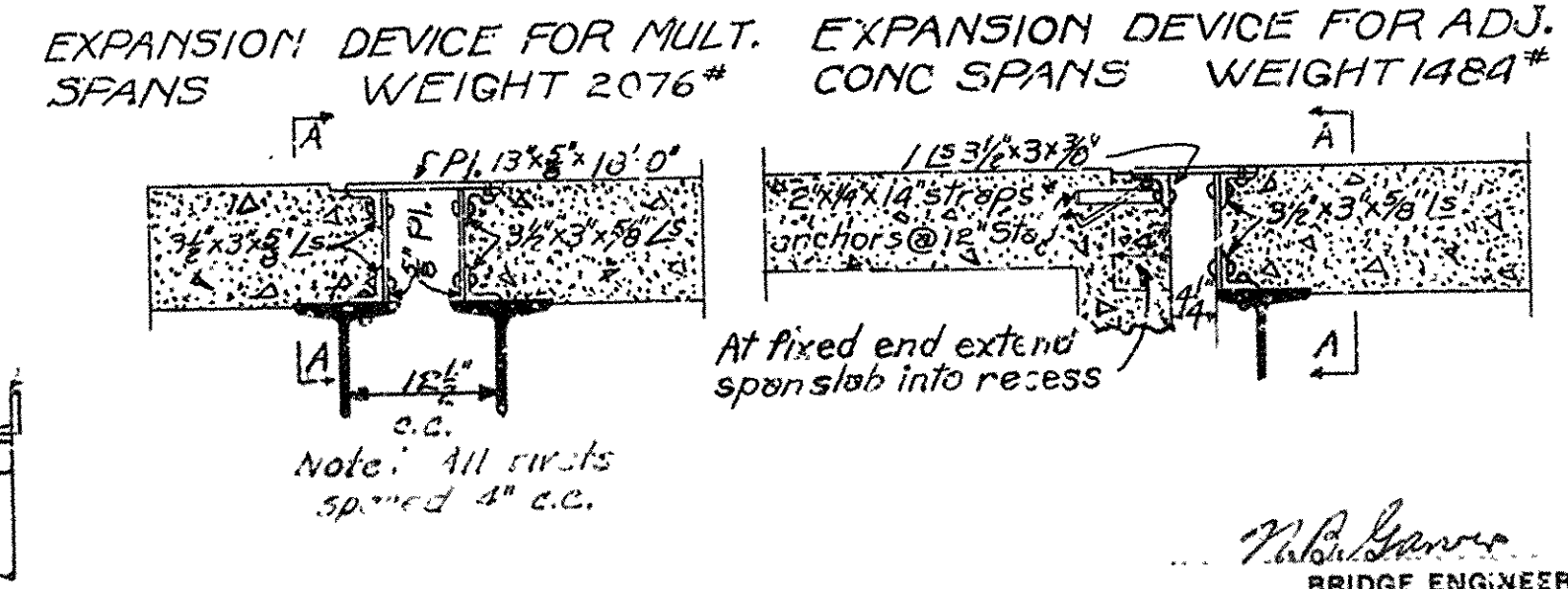
NOTES

All floor beams to be Beth's 24" @ 70"  
All lower laterals to be 3" x 2 1/2" x 1/4" angles  
End batten pl's to be 14" x 3/8" x 1/4"  
Intermediate batten p's to be 3" x 3/8" x 1/4"



FLOOR BEAM DATA

D.L. Mom. = 18910 x 20.5 x 12 ÷ 8 = 581,000 #"  
L.L. Mom. = 12000 x 11.5 x 12 = 1656,000 #"  
Impact Mom @ 30% = 496,800 #"  
Total Mom. = 2,733,800 #"  
Reqd. Sec. Mod. = 2,733,800 ÷ 18000 = 151.8  
Sec. Mod. of Beth's 24" @ 70" = 163.7 (OK)  
Pl. 3 1/2" x 1 1/4" x 13" W. 1/2" Th.  
Pl. 13" x 3/8"  
1 Ls 3 1/2" x 3" x 1 1/4"  
3/8" Pl.



ESTIMATED QUANTITIES

This drawing included in Job No. 5-1-29

general information only.

Structural steel with out expansion devices 33,102 Lbs.  
Reinforcing steel (includes to outside of End Fl. Bms.) 5,618 Lbs.  
Class "S" concrete (outside to outside of End Fl. Bms.) 3576 Cu Yds

5-2-29  
Solving of "S1" Bars in floor Slab & lateral Lug Angles by No. 11-13-29  
1-7-29  
for General Revisions by No.

STANDARD PLAN  
60'-0" LOW TRUSS SPAN  
18'-0" CLEAR ROADWAY  
ROUTE SEC.  
ARKANSAS STATE HIGHWAY DEPARTMENT  
LITTLE ROCK, ARK.

Drawn By: N.O.E. Date: \_\_\_\_\_  
Traced By: R.P.B. Date: \_\_\_\_\_  
Checked By: \_\_\_\_\_ Date: \_\_\_\_\_  
Scale: 3/4" in. 1'-0" ft.  
BRIDGE NO. \_\_\_\_\_ DRAWING NO. 1051

BRIDGE ENGINEER