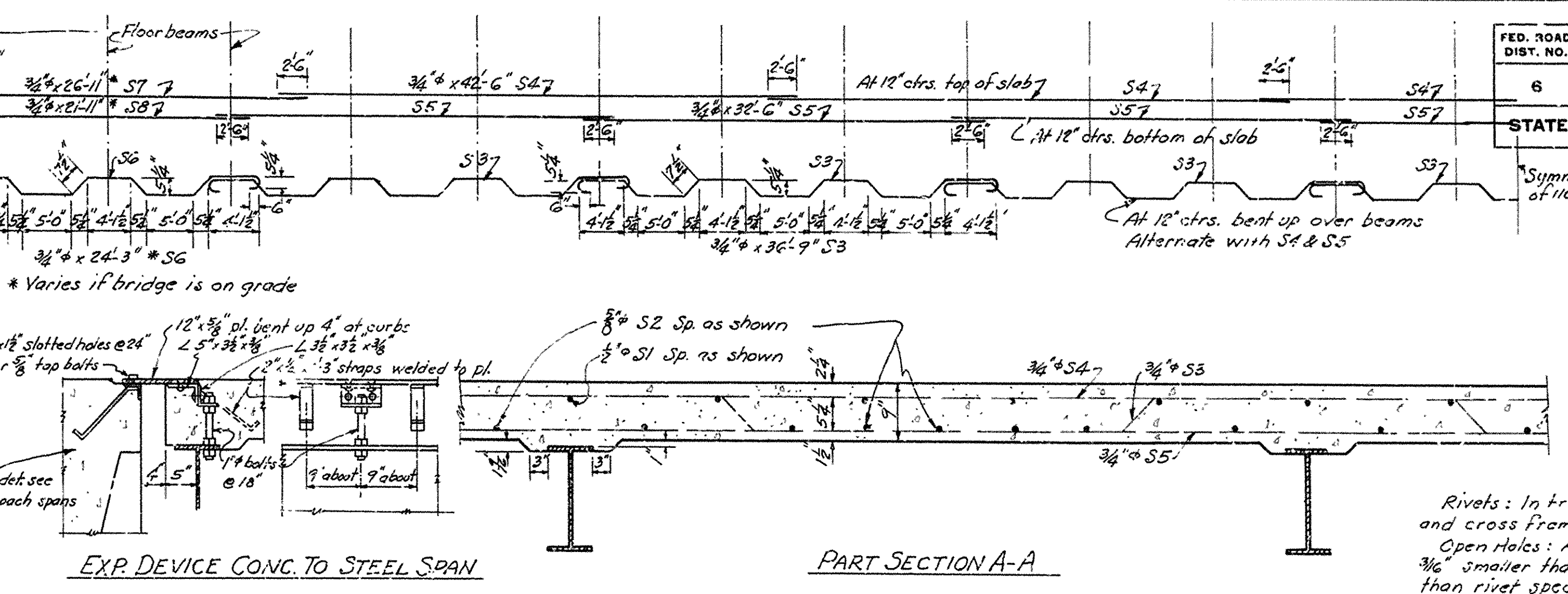
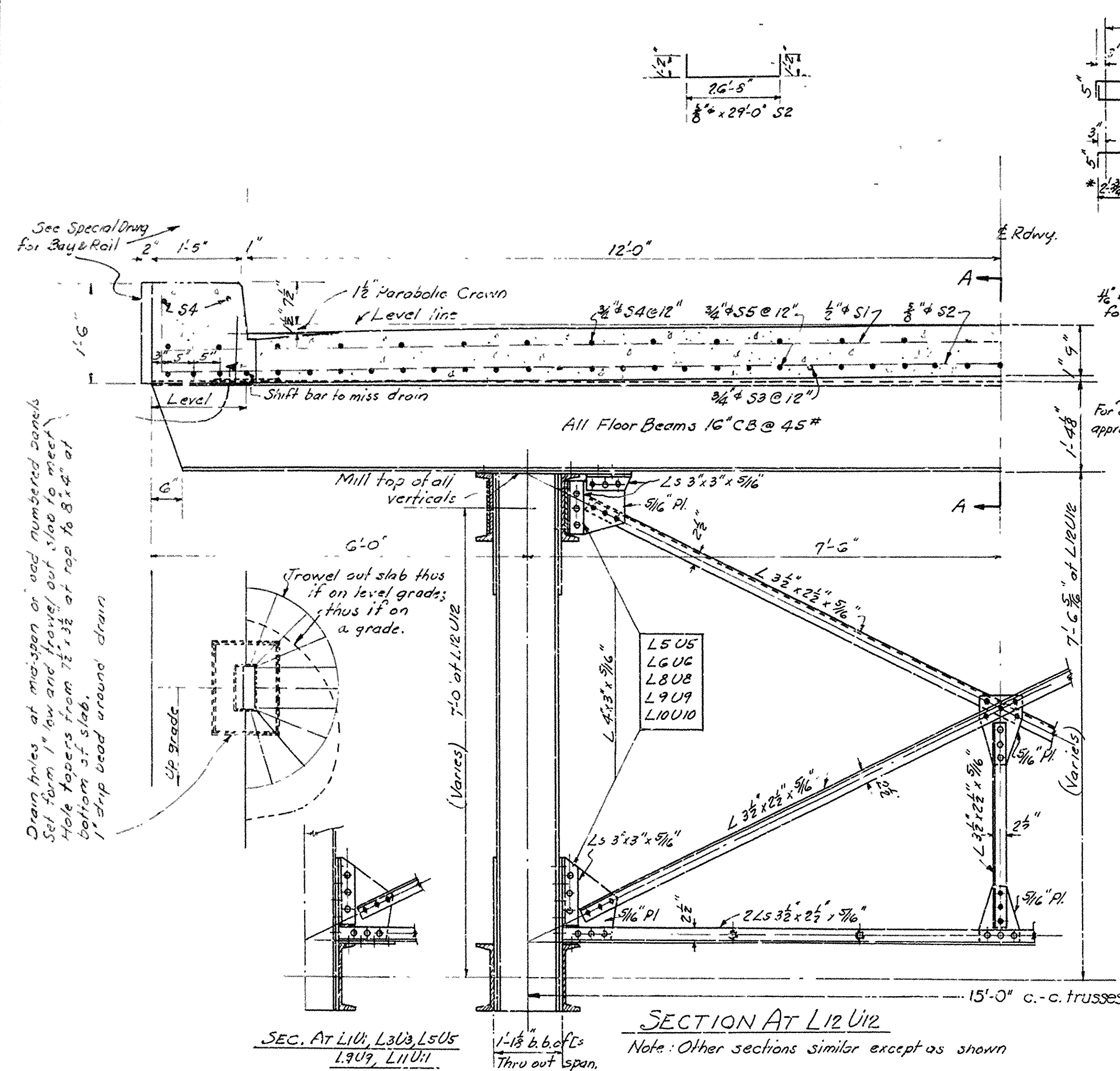


FED. ROAD DIST. NO.	STATE	FED. AID PROJECT NO.	FISCAL YEAR	SHEET NO.	TOTAL SHEETS
6	ARK.	102 (3)		26	29

STATE JOB NO. 6231



**GENERAL NOTES:**

Rivets: In trusses and floor beams  $\frac{3}{8}$ " in lateral bracing and cross frames  $\frac{3}{4}$ "

Open holes: All holes in truss connections to be sub-punched  $\frac{1}{16}$ " smaller than rivet specified and reamed to  $\frac{1}{16}$ " larger than rivet specified during shop assembly. Members shall be match marked and a suitable diagram furnished for erection. All field connections shall be riveted.

Shapes of equal or greater strength may be substituted for structural shapes shown, but payment will be made in accordance with sizes shown on these drawings or the substituted section if of lesser weight. These drawings show general features of design only. Shop drawings shall be made in compliance with specifications, submitted and be approved before fabrication is begun.

Shop Paint: After being complete, assembled and shop work is finished, all pieces shall be given one coat of red lead and raw linseed oil before shipment.

Field Paint: First coat - white lead tinted with lamp black. Second coat - Aluminum.

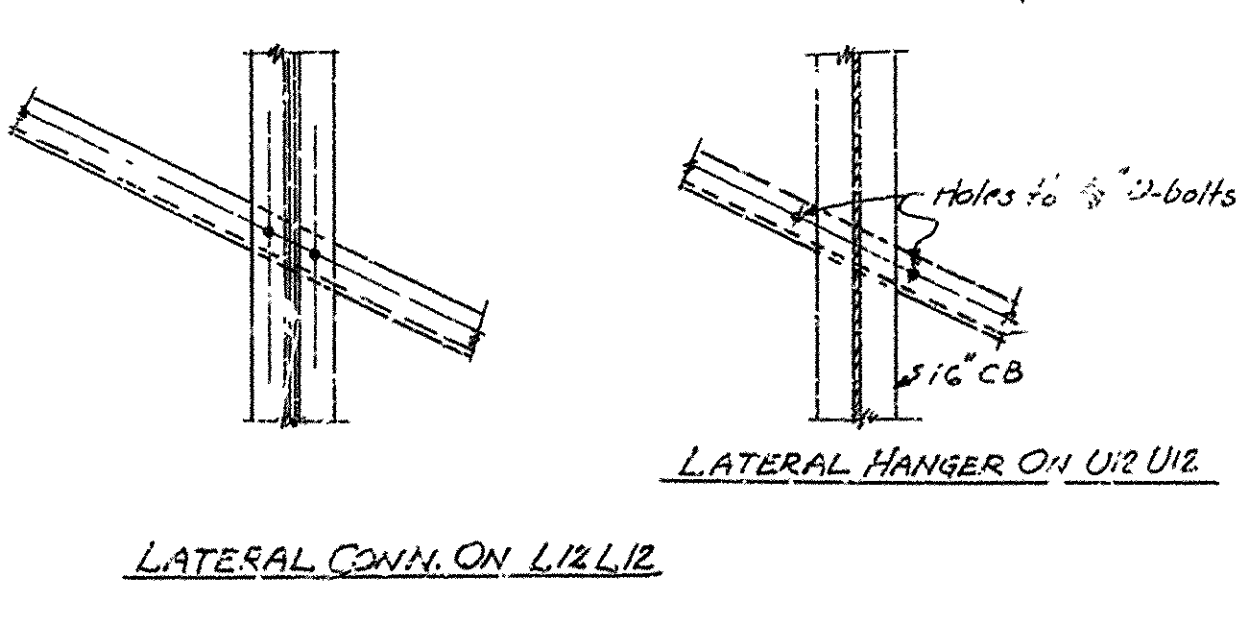
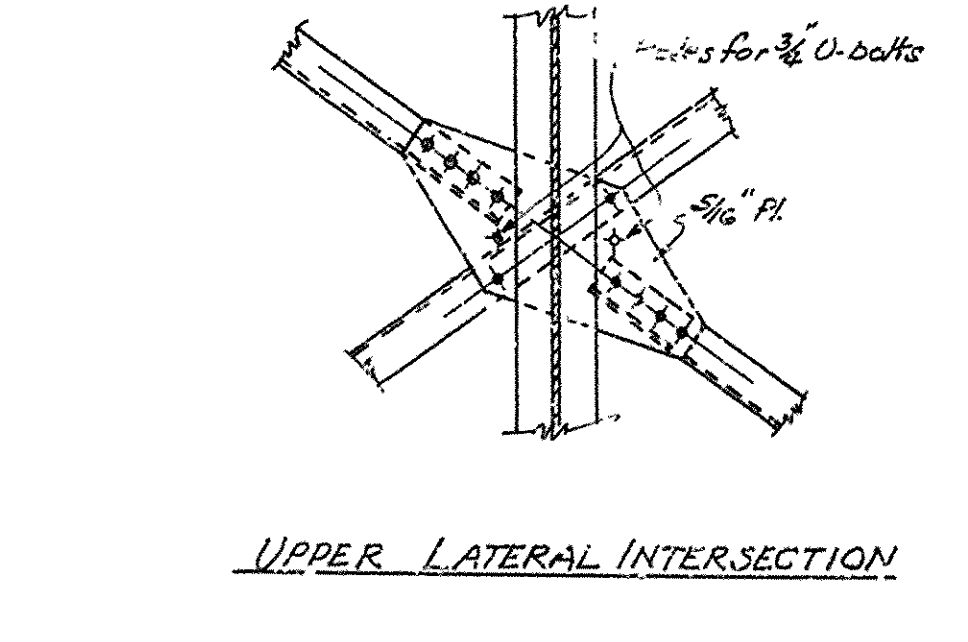
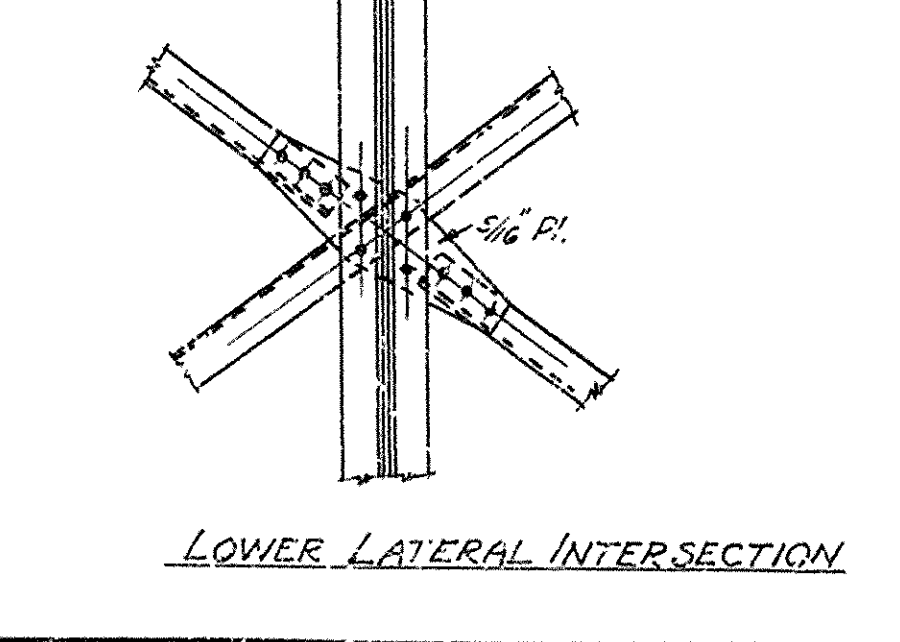
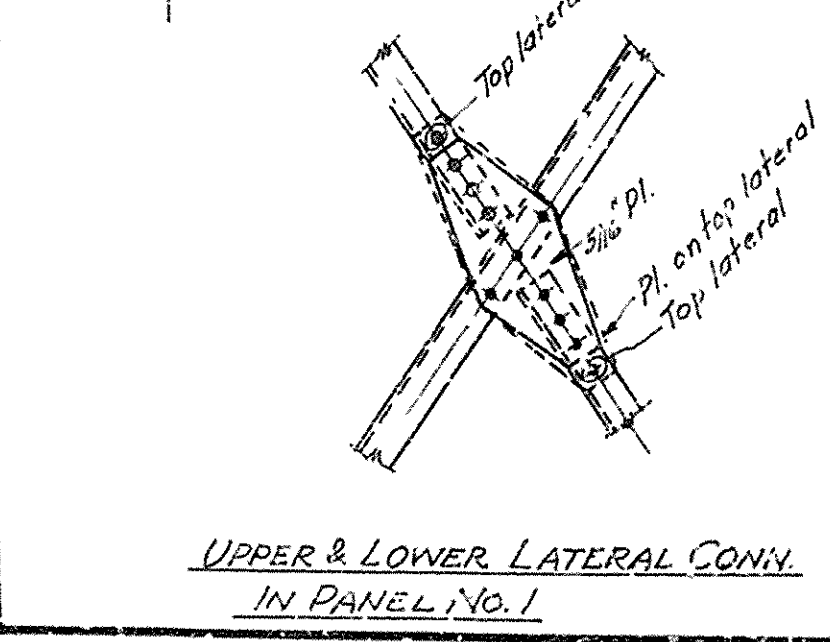
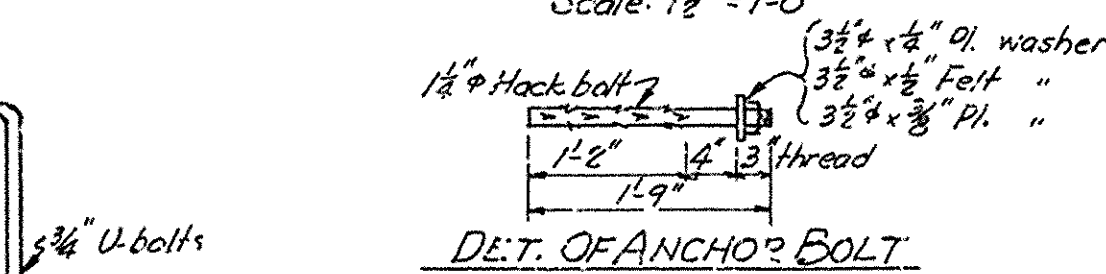
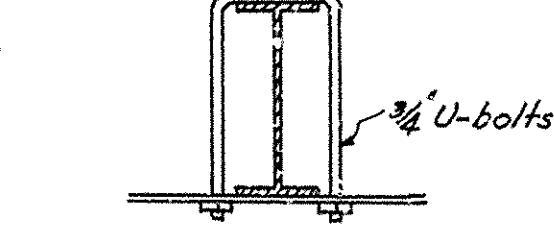
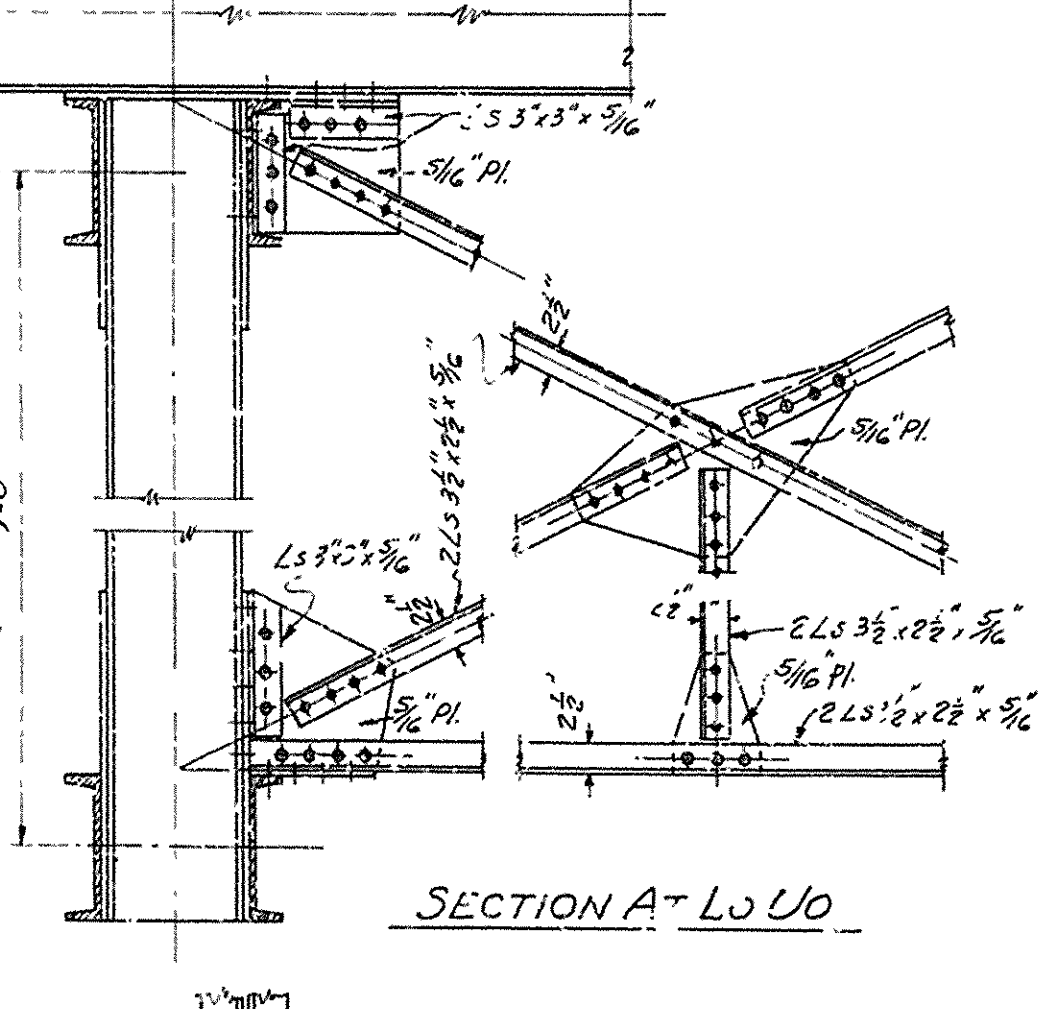
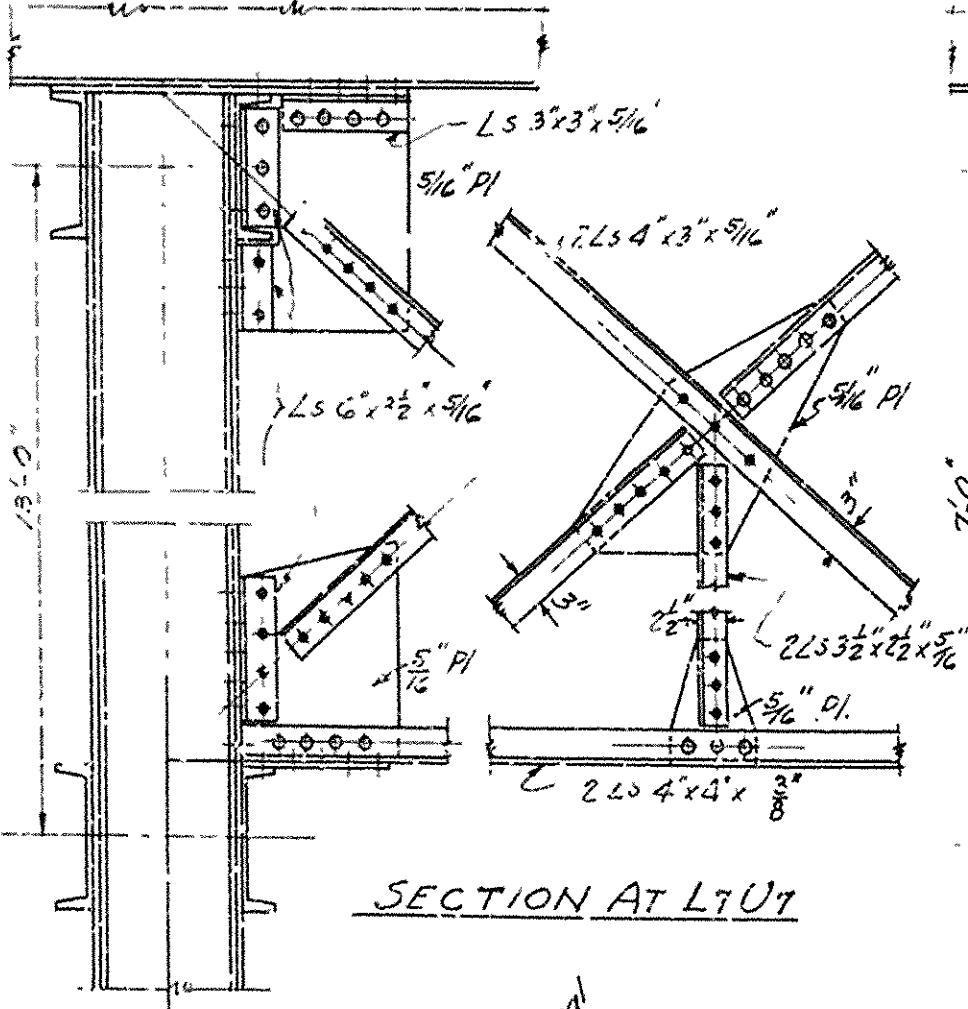
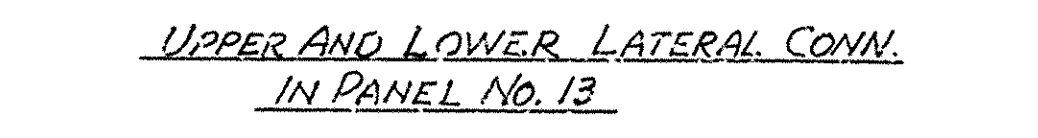
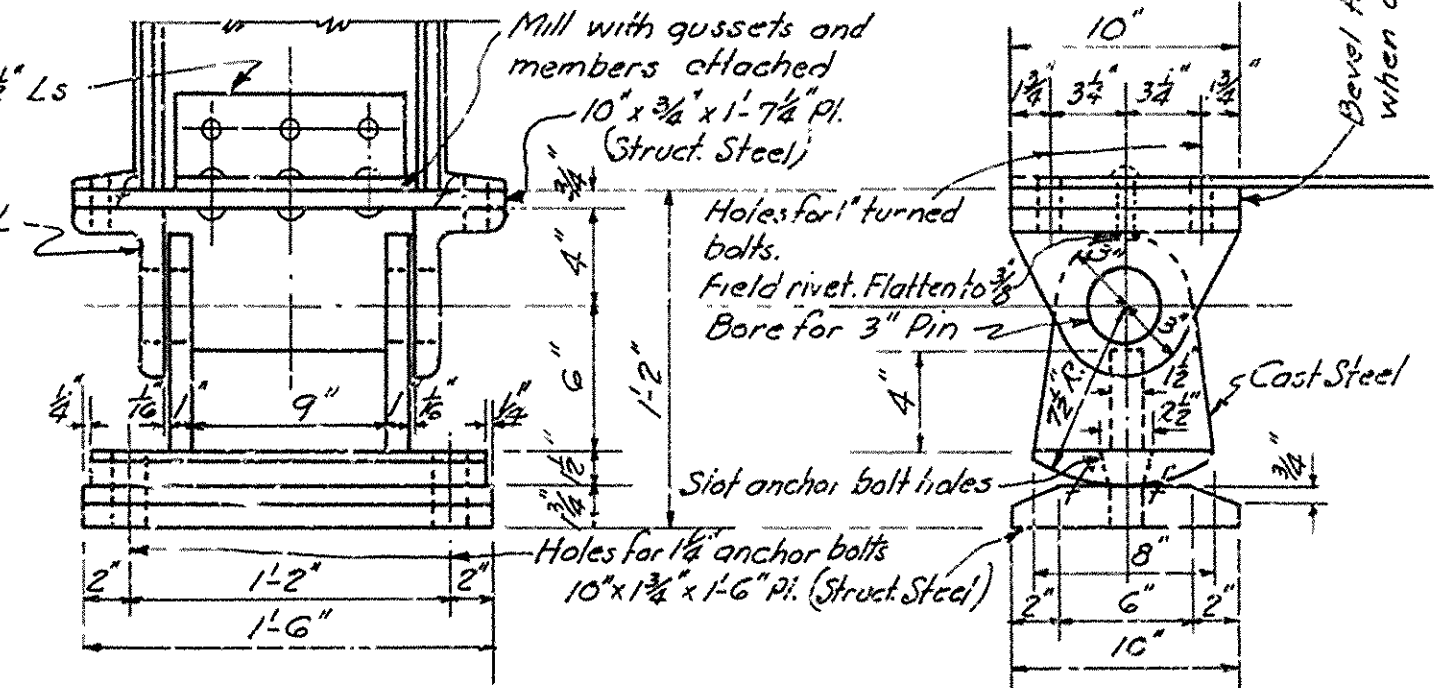
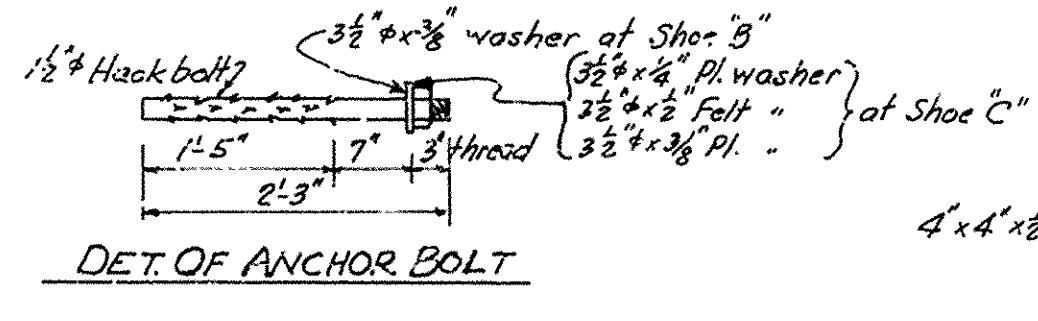
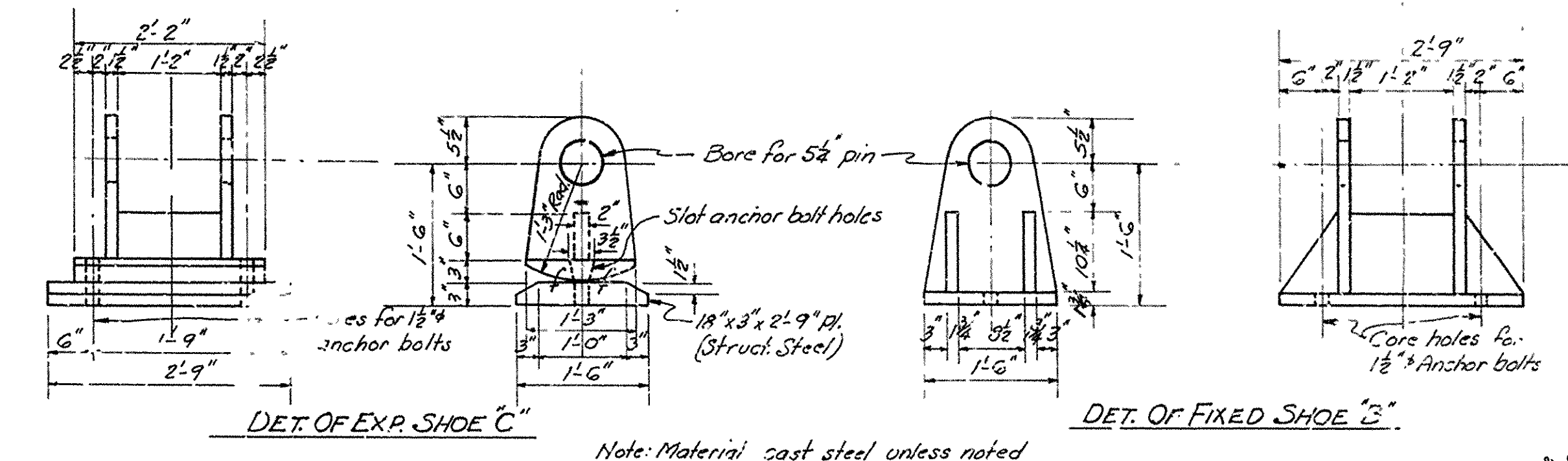
All shoe material including anchor bolts, and expansion device of ends of span including supporting bolts shall be paid for as Metal Bearing and Roadway Expansion Devices unless otherwise provided for.

Floor Slab: Concrete to be Class 3. One inch has been added for wear.

Specifications: Arkansas State Highway Commission Standard Specifications for Road and Bridge Construction adopted June 30, 1936 and Special Provision for Design Specifications for Bridges dated 9-11-36.

Unit Stresses - Concrete 750 #/sq in.  
Reinforcing Steel 16000 #/sq in.  
Structural Steel 17000 #/sq in.

Live Load: H15 Highway Loading  
Trusses shall be cambered for dead load only.



Rev. 3-39 S1 bars size & number.

This Drawing to accompany Drawings 2460, 2460-A, and 2460-B

**DETAILS OF STANDARD  
70'-110'-70' CONTINUOUS TRUSS SPANS  
24' CLEAR ROADWAY**

ROUTE    SEC.   

**ARKANSAS STATE HIGHWAY COMMISSION**  
LITTLE ROCK, ARK.

Drawn By: L.P.C. Date: 1-9-37  
Traced By: L.P.C. Date: 2-22-37  
Checked By: \_\_\_\_\_ Date: \_\_\_\_\_

Scale:  $\frac{1}{4}$ " = 1' ft  
*except as noted*

BRIDGE NO.    DRAWING NO. 2460-C

M.B. Barber  
BRIDGE ENGINEER