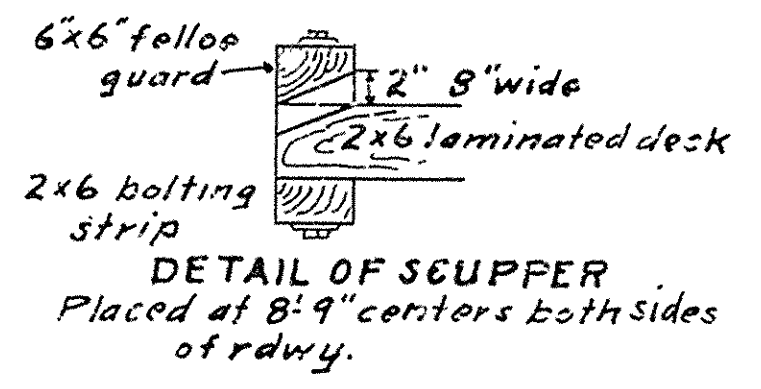
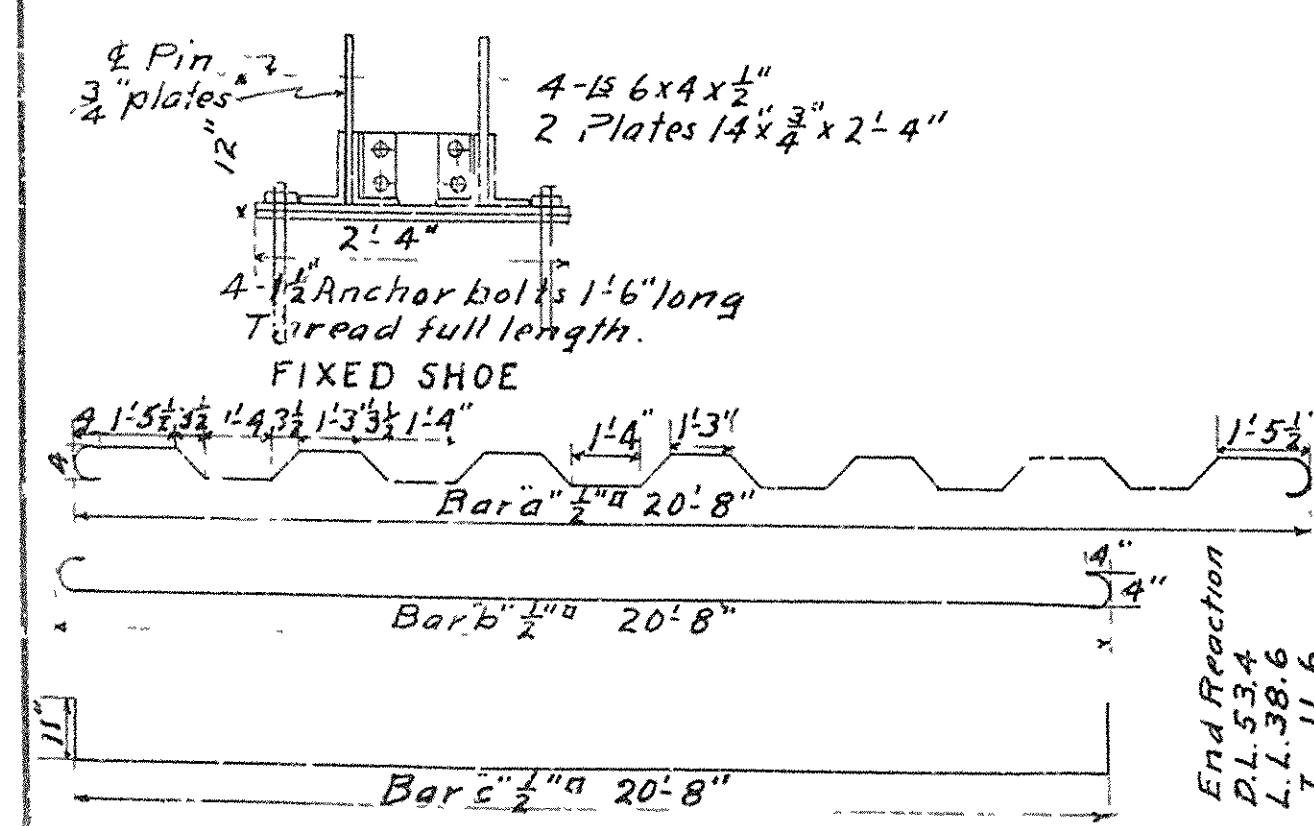


DETAIL OF LATERAL HANGER



EXP. SHOE

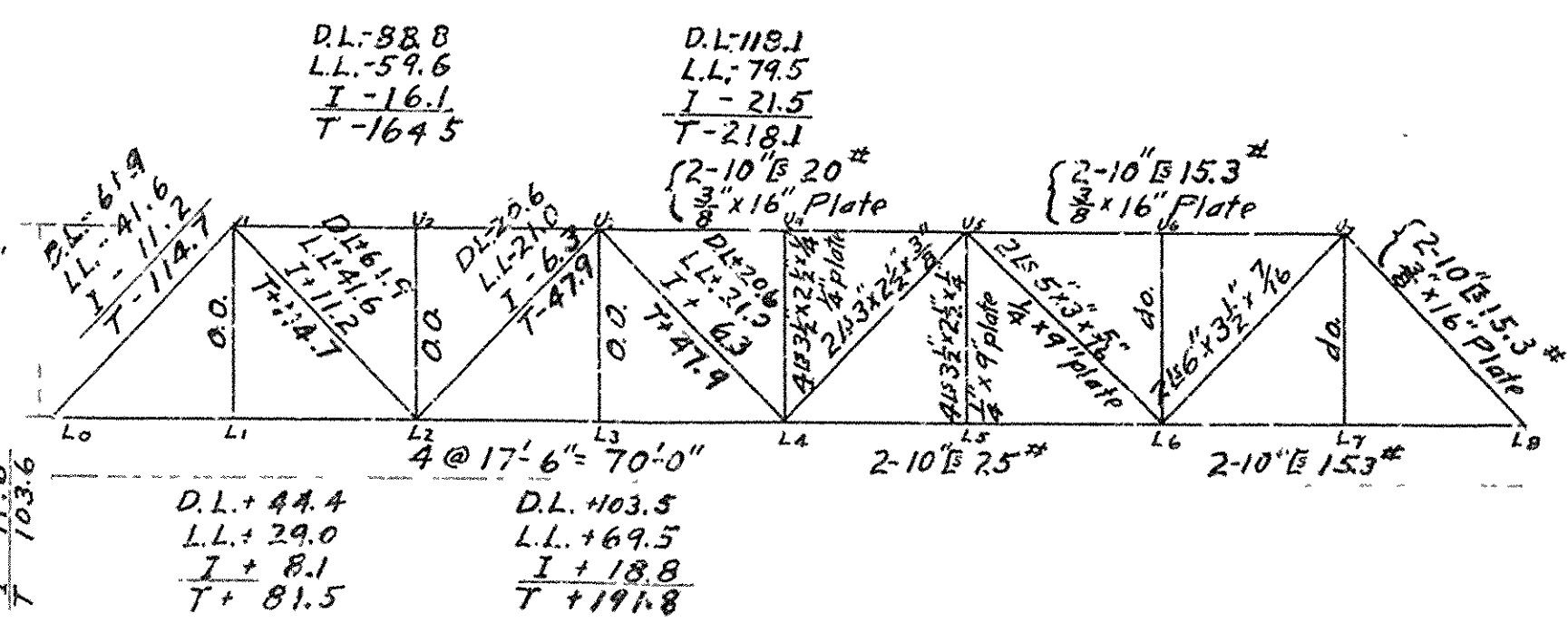


SPECIFICATIONS
All materials and workmanship shall conform to the specifications of the Arkansas Highway Dept. adopted 5-30-25.
Unit Stresses-See Arkansas Highway Dept. specifications

Nailing strip to be bolted to alternate flanges of stringers with $\frac{3}{8}$ " bolts at 4'-0" ctrs.
Felloe guard to be bolted to deck end bolting strip with $\frac{3}{4}$ " bolts at 6'-0" ctrs.
2x6" laminated decking SLE. Each piece to be nailed to each adjacent piece once between each stringer with 30d spikes. Each piece to be nailed to alternate nailing strips with 20d spikes. Alternate pieces to be nailed to alternate nailing strips. Malleable or cast iron washers to be used on both ends of machine bolts, where possible.
Grade Timber:-See Ark. Std. Hwy. Spec.
Where treated timber is used it is to be treated by empty cell process in accordance with paragraph 522(d) of Ark. Std. Hwy. Specifications.
Where untreated timber is used it shall conform to Section 52 Ark. Std. Hwy. Specifications.

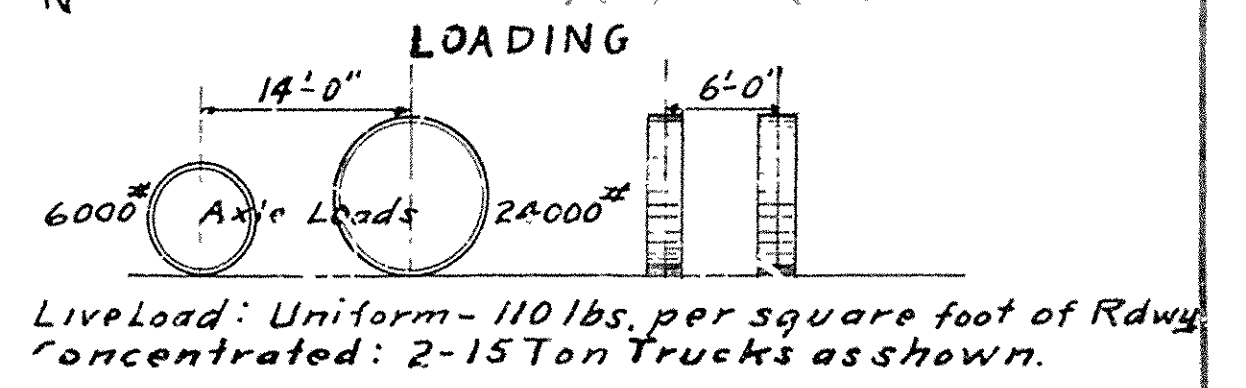
Rivets:- $\frac{3}{4}$ " diam.
Open Holes:- Rivet holes in main members shall be subpunched $\frac{1}{8}$ " and reamed to $\frac{1}{16}$ " after shop assembly.
All field connections riveted. Rivet holes in tension members shall be spaced that not more than one hole is deducted from Area of cross-section of each angle at point of maximum stress.
Shop Paint:- One coat red lead + raw linseed oil.
Field Paint:- Two coats of different colors as approved by the engineer.
Batten plates:- Spaced not over 3'-0" centers on tension members. Bethlehem or Carnegie sections of the same or greater strength as shown may be used but pay. ... will be made on sections shown on plans.

Floor slab to be Class S concrete when used to replace wood deck. 1" extra has been added for wear.



	Floor Beam	Stringers
DLM $\frac{1}{2}$ W ¹²	12500 Ft.lb	6300 Ft.lb
LLM Wheel Load	170600 "	71600 "
I 30% LL	51180 "	12480 "
Total Mom.	346780 Ft.lb	60380 Ft.lb
Beam Used	27" 101# Carn.	14" 33# Carn.
Its Sec. Mod.	264.7	47.6
Sec. Mod. Rqd.	260	45.4

Revised 5-1-28 R.W.A.
Changed L₂ from 10" 20# L₂ to 10" 15.3# L₂
Changed L₃ L₄ from 2L₃ 3x2 1/2 x 3/8 to 2L₃ 3x2 1/2 x 3/8 + added clip angle
Added rivets to L₁ L₂ L₃
Changed all dead load stresses and all stresses in L₂ L₃ L₄



Liveload: Uniform-110 lbs. per square foot of Rdwy
Concentrated: 2-15 Ton Trucks as shown.

Note: This drawing is general, shop drawings must be submitted for approval.

estimate of Quantities
Struct. Steel 62,000 lbs.
Bridge Timber (Treated) 10.5 M.B.M.
~~Rein. Steel 10,000 lbs.~~

STANDARD PLAN
70-FT. STEEL PONY SPAN
20 FT. ROADWAY WOOD OR CONCRETE FLOOR
ROUTE SEC.
ARKANSAS STATE HIGHWAY DEPARTMENT
LITTLE ROCK, ARK.
Drawn By: R.W.A. Date: 1-24-27
Traced By: M.H. Date: "
Checked By: M.H. Date: 3-24-27
BRIDGE No. XXXXXX DRAWING No. 81

N.B. *R.W.A.*
BRIDGE ENGINEER