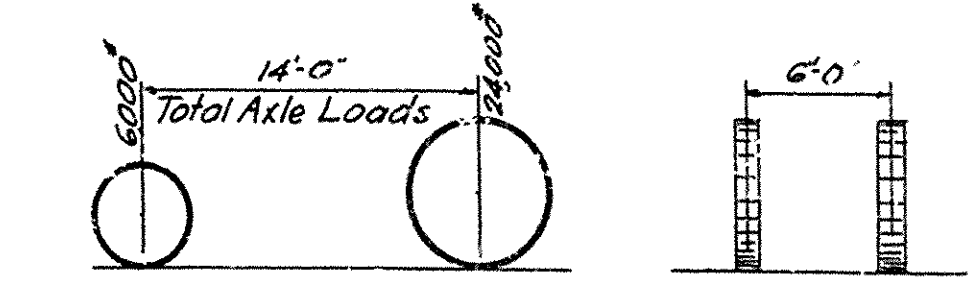


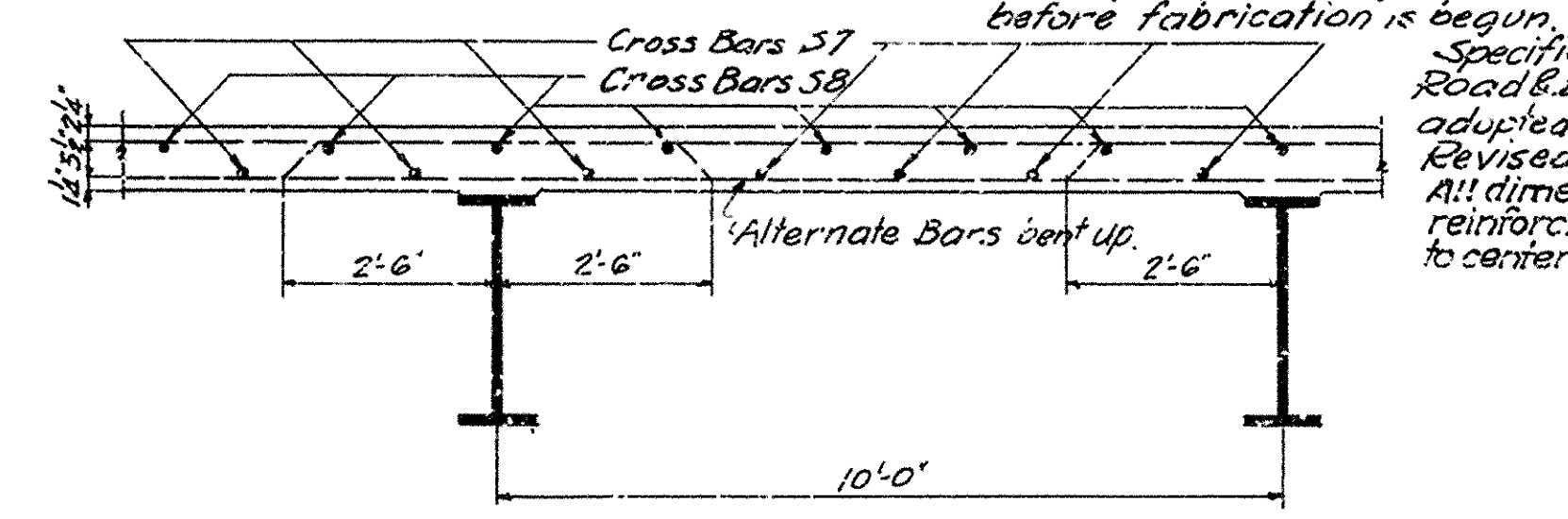
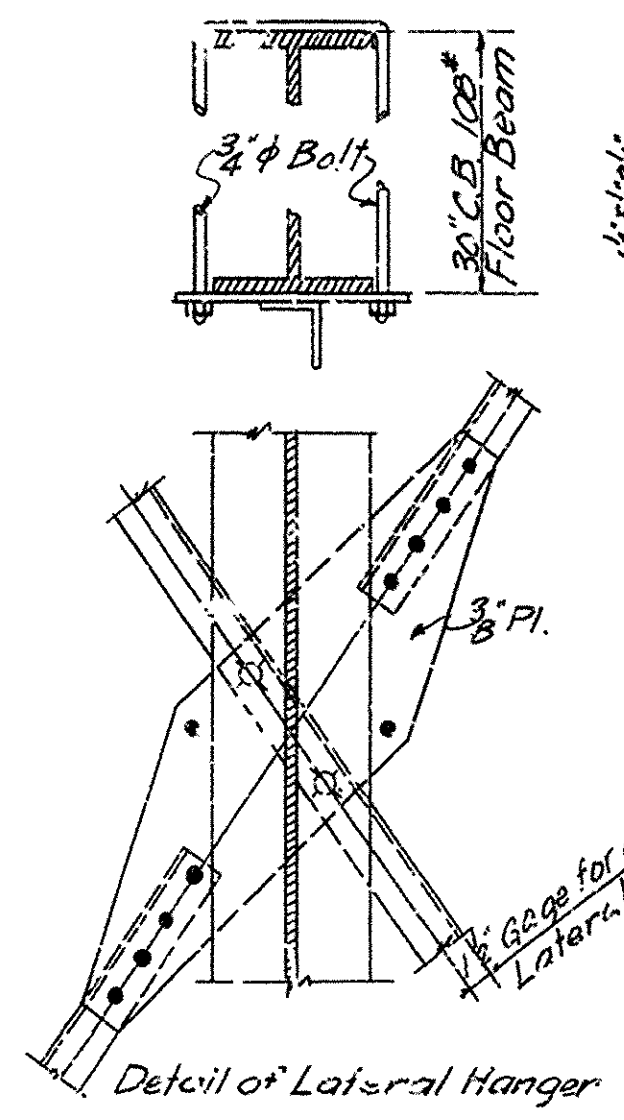
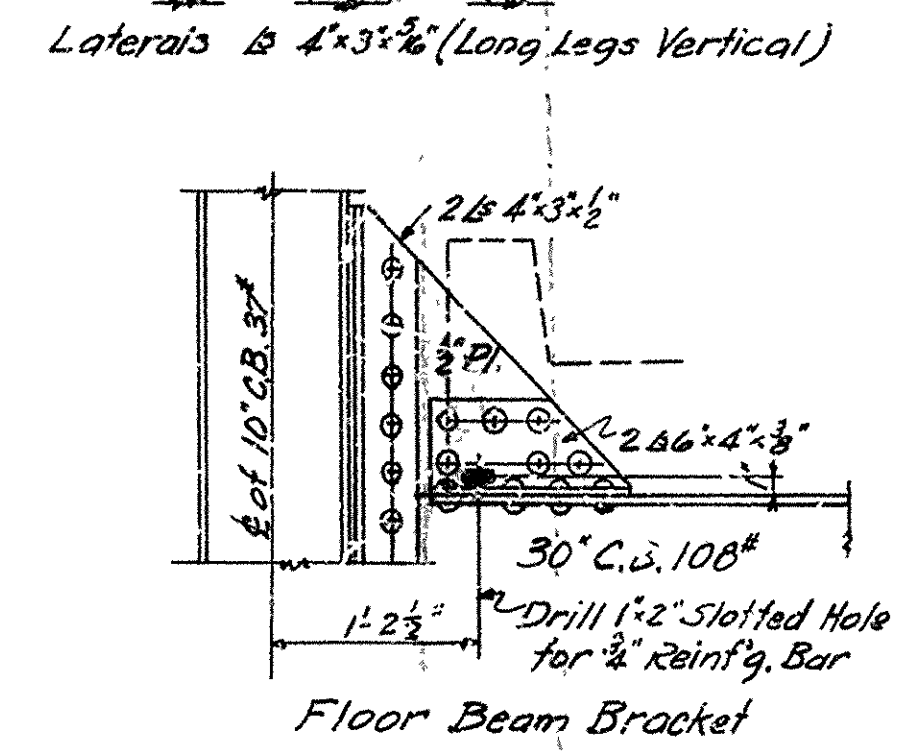
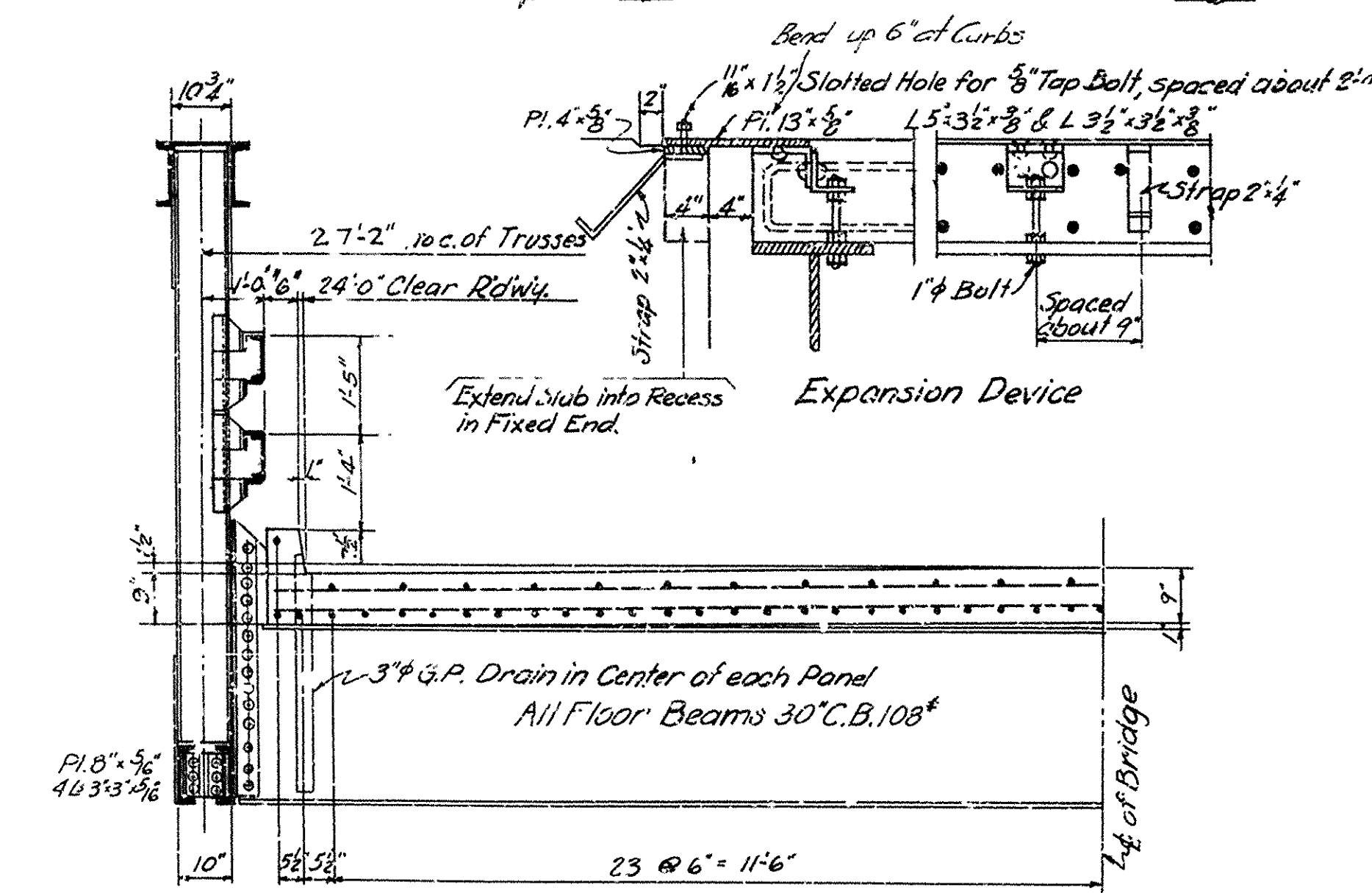
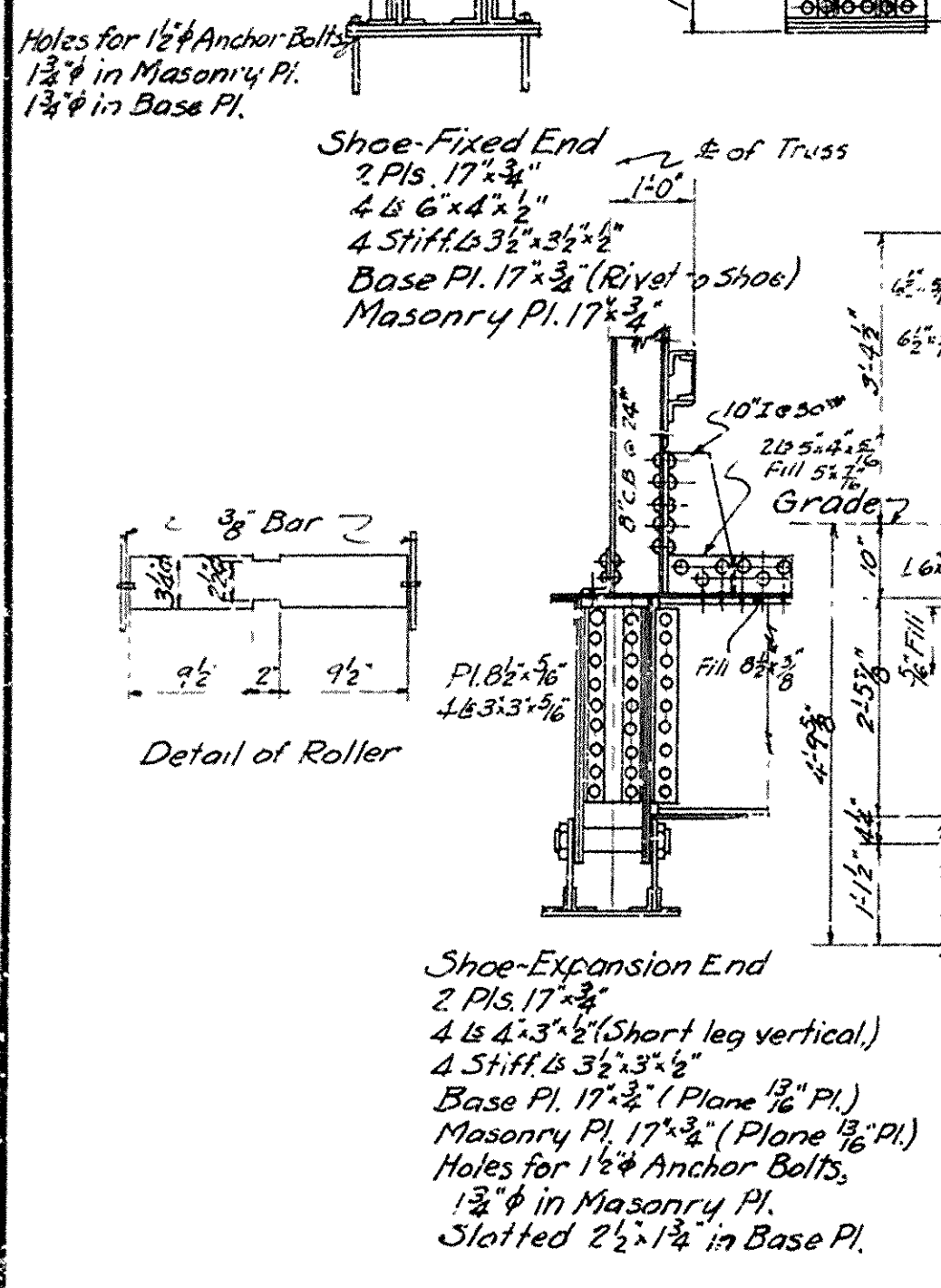
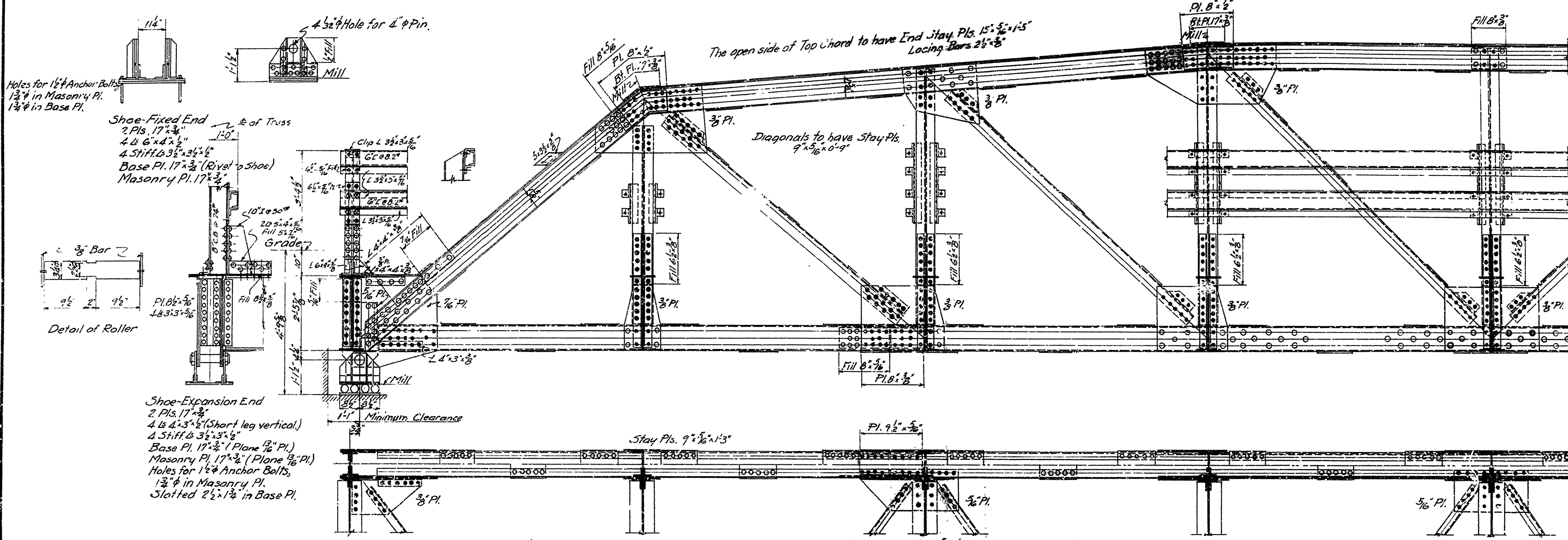
FISCAL YEAR	Job No	SHEET NO.	TOTAL SHEETS
1922	562	32	33

FED. ROAD DIST. NO.	STATE	PROJECT NO.	FISCAL YEAR	SHEET NO.	TOTAL SHEETS
6	ARK	172	1922	32	33

Unit Stresses
 Concrete 750 lbs per sq. in.
 Reinforcing Steel 16,000 "
 Structural Steel 16,000 "
 Live Load H15 Loading



General Notes:
 Rivets 3/4" Open Holes 1/4".
 All holes in truss connections to be sub-punched 1/8" and reamed to size while truss is assembled, this applies to field as well as shop rivets.
 Floor beam connections to be sub-punched 1/8" and reamed to a metal template.
 All field connections shall be riveted.
 Shop paint: After being completely assembled and shop work finished, all pieces shall be given one coat of red lead and raw linseed oil before shipment.
 Field paint: 1st Coat White Lead, tinted with Lamp Black, 2nd Coat Aluminum Paint (See Specifications) has been added for wear.
 All floor beams to be milled to exact length after framing angles have been riveted.
 Shapes of equal or greater strength may be substituted for shapes shown but payment will be made in accordance with sizes given on this plan.
 This drawing shows general features of design. Shop drawings shall be made in compliance with specifications, submitted and approved before fabrication is begun.
 Specifications: Ark. Standard Road & Bridge Specifications adopted May 30, 1925 & Revised.
 All dimensions relating to reinforcing steel are center to center of bars.



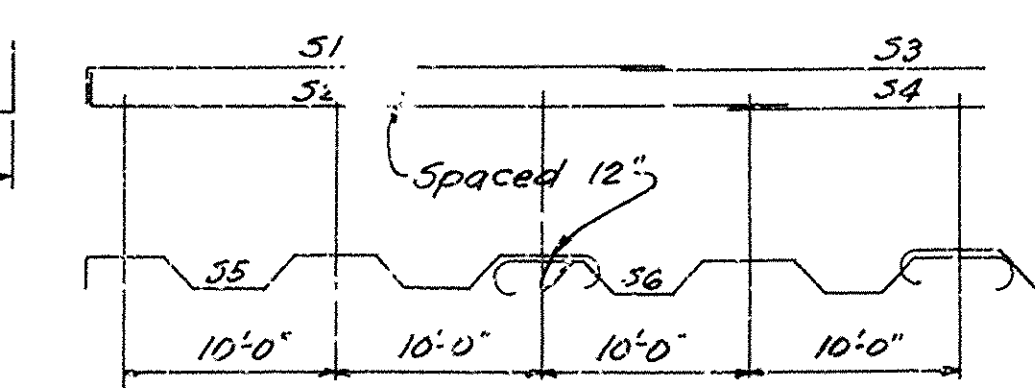
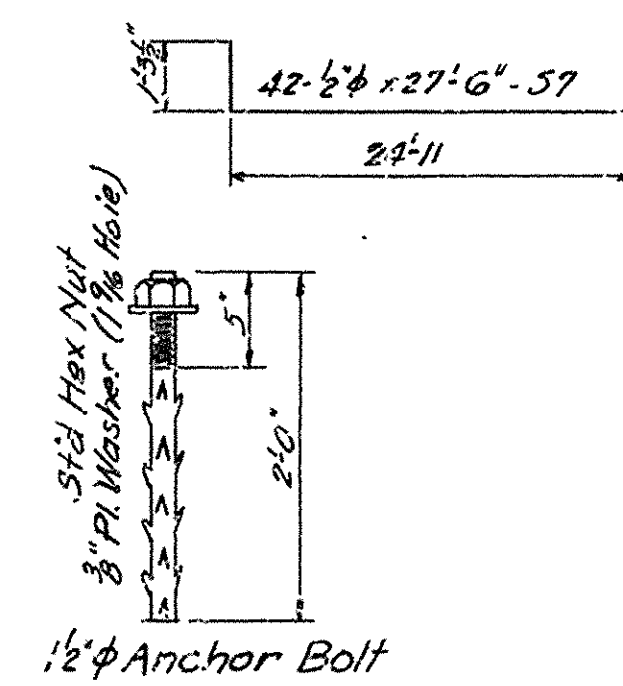
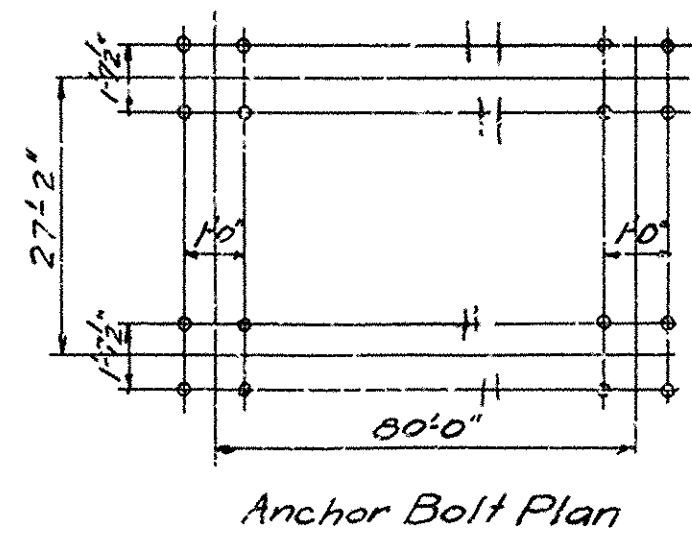
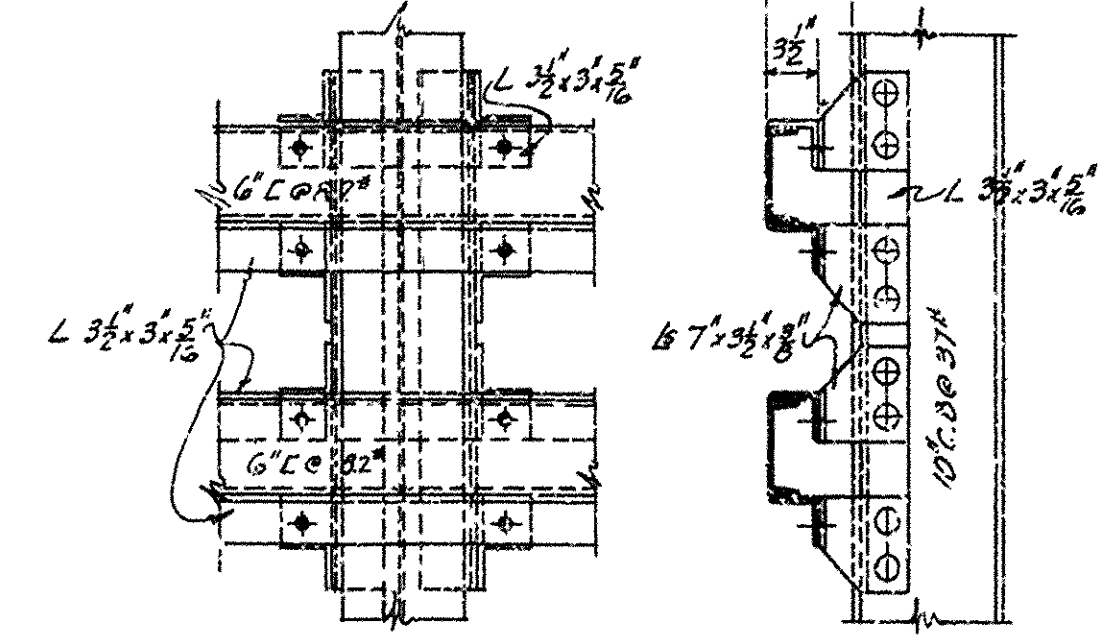
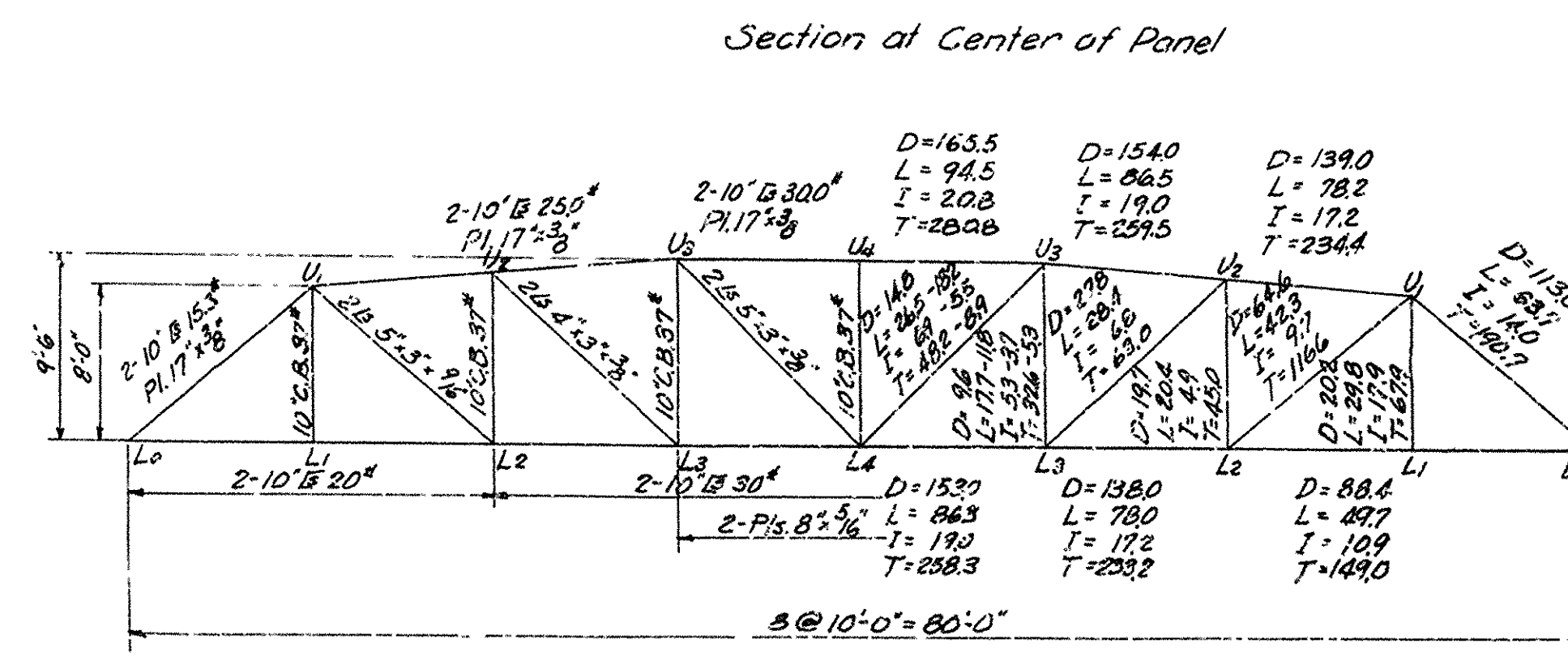
FLOOR BEAM DATA

Dead Load Moment	1,350,000 in. lbs.
Live Load Moment	2,650,000 " "
Impact 30%	795,000 " "
Total Moment	4,795,000 " "
Required Section Modulus	4,795 ÷ 16 = 300.3
Section Modulus of 30" C.I. 108"	is 299.2

ESTIMATED QUANTITIES

Structural Steel	8317.7
Reinforcing Steel	12.420
Class 3 Concrete	39.59 cu. yds.

Note: Structural Steel Tonnage does not include weight of Expansion Device.



STANDARD PLAN
 80'-0" LOW TRUSS SPAN
 24'-0" CLEAR ROADWAY
 ROUTE SEC.
 ARKANSAS STATE HIGHWAY COMMISSION
 LITTLE ROCK, ARK.

Drawn By: M. Date: 2-2-22
 Traced By: M. Date: 2-2-22
 Checked By: M. Date: _____
 BRIDGE NO. _____ DRAWING NO. 3543

M.A. Sawyer
 BRIDGE ENGINEER