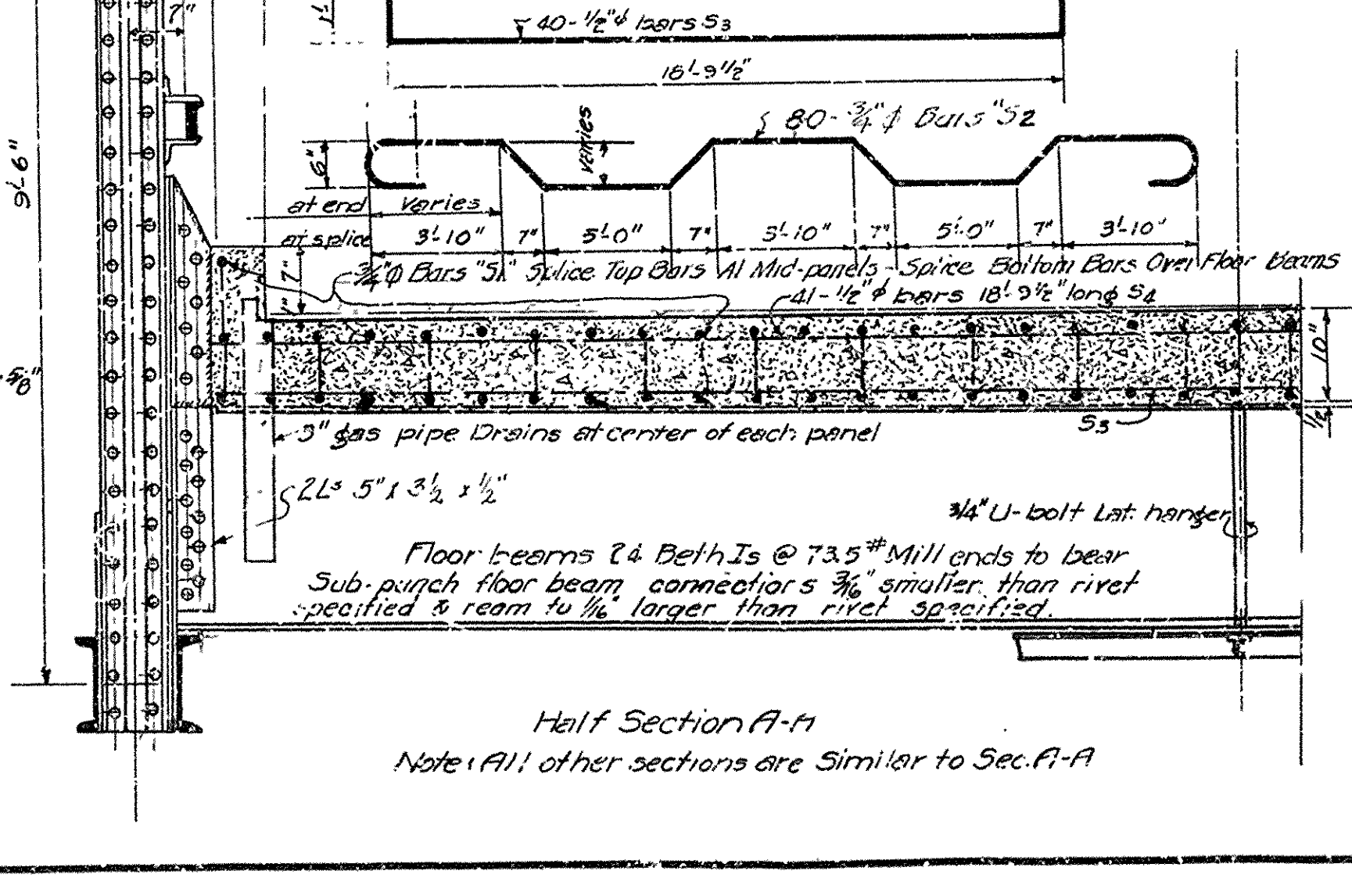
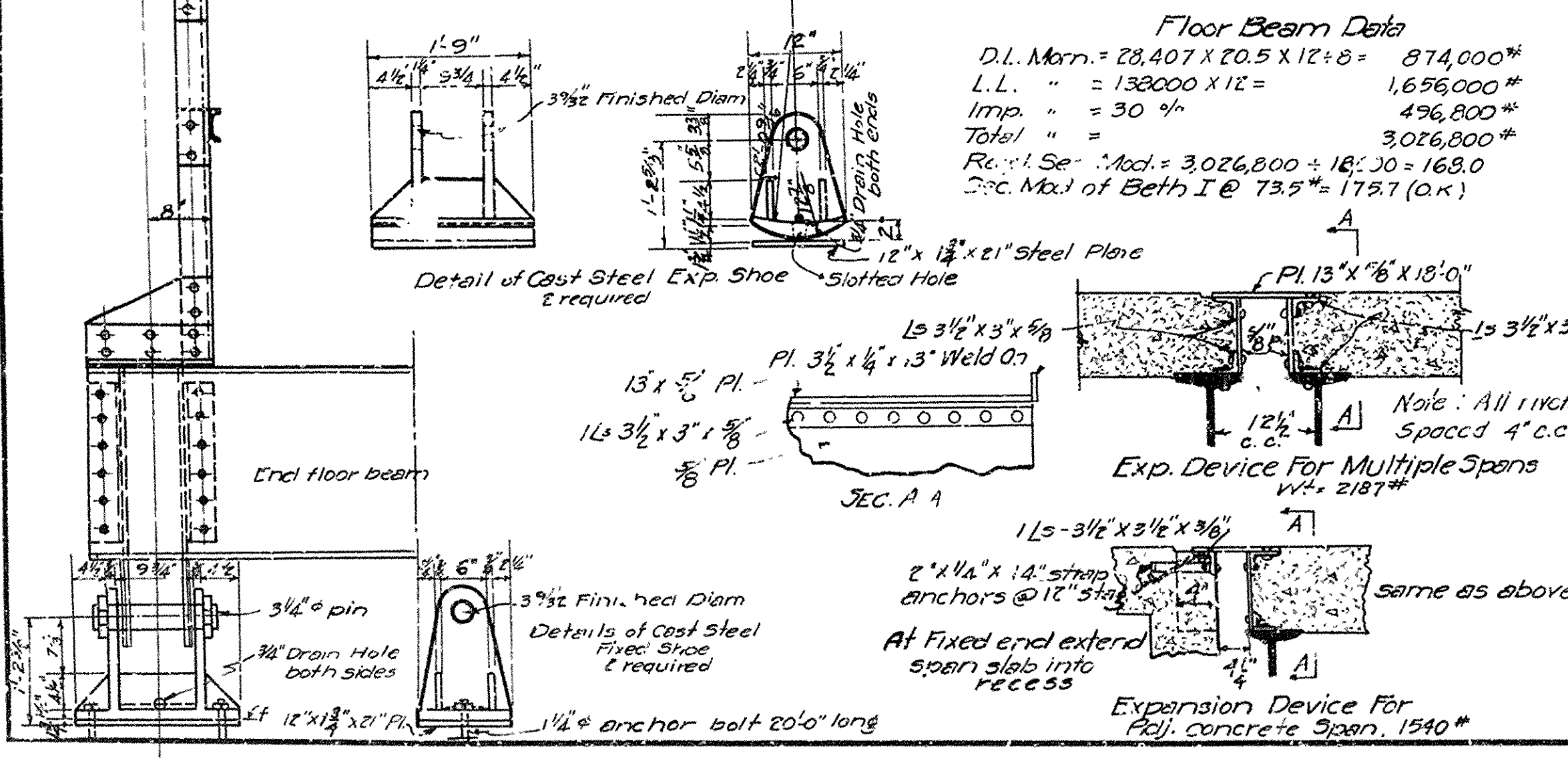
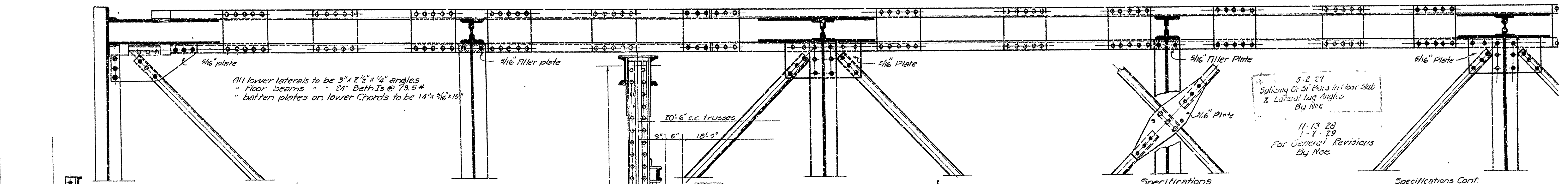
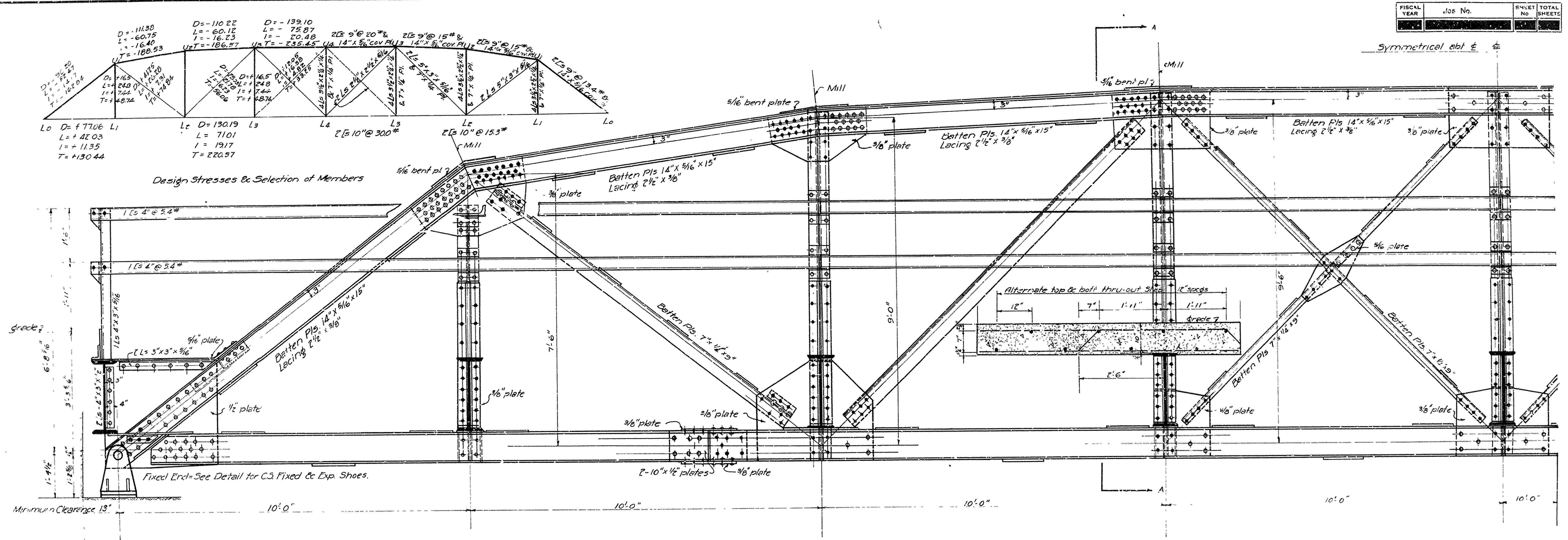


FISCAL YEAR	Job No.	SHEET NO.	TOTAL SHEETS



Specifications

Live Load Uniform-100 per sq ft. of roadway. Members of equal or greater strength may be used in place of members shown here, but payment will be made in accordance with sizes shown on this plan.

Stringers & Floor Beams to be milled to exact length.

ton trucks as shown This Drawing is general only. Shop Drawings must be made in compliance with specifications, must be submitted & approved before fabrication begins.

Impact=100+L+300

Unit Stresses Concrete 810 psi Specifications Ark. State Highway: Reinf. Steel 18,000 psi Specifications, adopted May, 30, 1925 and Revised.

Estimated Quantities

Structural Steel Without Exp. Devices	49,350 lbs
Reinforcing Steel (C. 10 C. of end fl. bars)	9,650 "
Class 5 concrete (0.16 O. of end fl. bars)	49,760 "

Standard Plan 80'-0" Low Truss Span 18'-0" cl. rdwy.

ROUTE SEC.

ARKANSAS STATE HIGHWAY DEPARTMENT
LITTLE ROCK, ARK.

Drawn By: *Noc* Date: 7/26/28
Traced By: *M.E.A.* Date: 7/27/28
Checked By: _____ Date: _____

Scale: 1/4" = 1' ft.

BRIDGE ENGINEER

BRIDGE NO. _____ DRAWING NO. 1053