

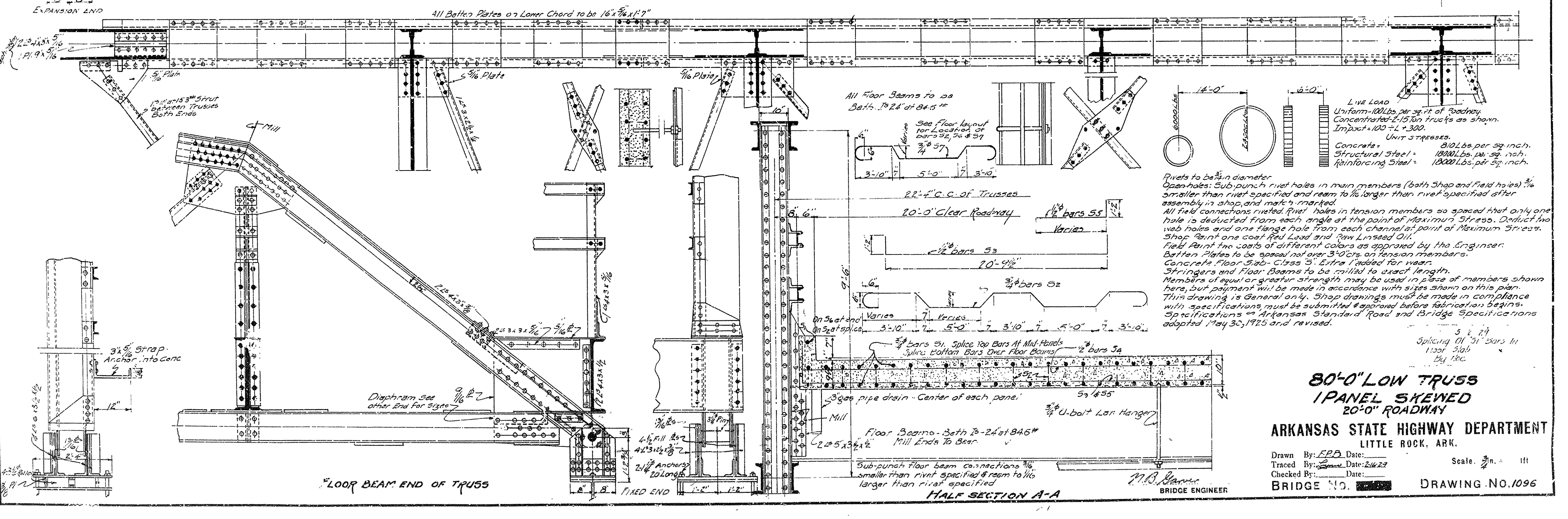
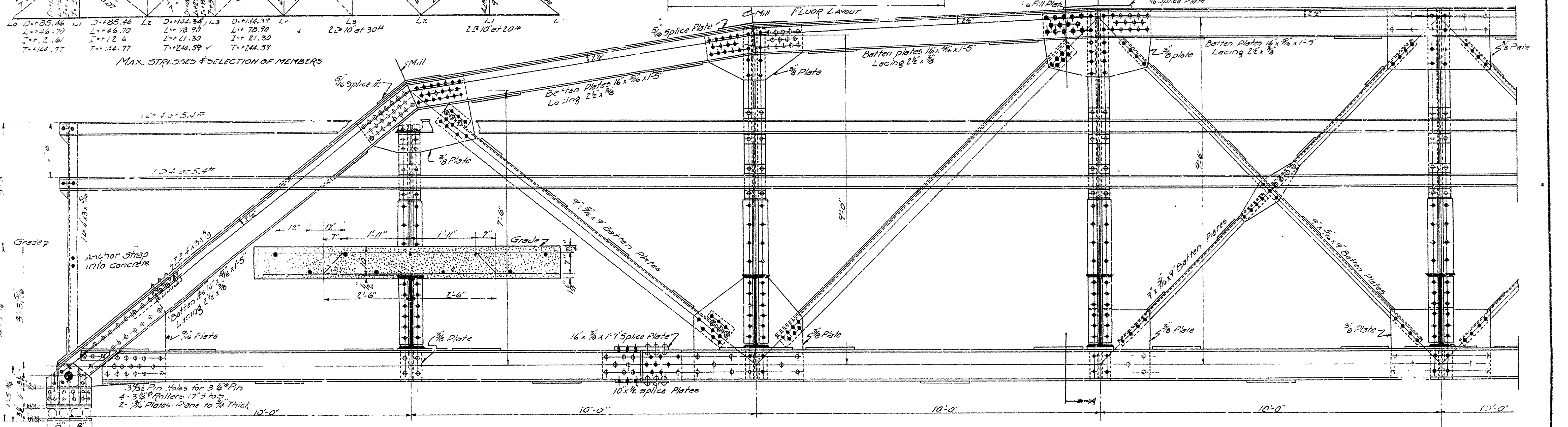
FISCAL YEAR	JOB NO.	SHEET NO.	TOTAL SHEETS

ESTIMATED QUANTITIES
 Structural Steel without Expan Devices 59,300 Lbs.
 Reinforcing Steel (10' to 0' of End Floor Beams) 6,472 Lbs.
 Class 5 Conc. (3' to 0' of End Floor Beams) 5,490 Cu. Yds.

FLOOR BEAM DATA
 D.L.M. = $31.512 \times 22.33 \times 1.5 = 1,355,000$ #"
 L.L.M. = $1734,572$ #"
 Imp. Mom. at 30% = $380,380$ #"
 Total Mom. = $3,569,972$ #"
 Required Sec Mod. = $3,569,972 \div 8000 = 446.25$ #"
 Section Mod of 24" B.I. = 86.5 #"
 $\therefore 200$

MAX. STRESSES & SELECTION OF MEMBERS

Members shown include: D-123.53, L-67.50, T-128.23, T-207.26, D-122.24, L-66.30, T-127.24, T-207.28, D-154.27, L-84.30, T-21.74, T-126.33, 2L⁹ at 20", 16" x 8 Corb, 2L⁹ at 15", 16" x 8 Corb, 2L⁹ at 15", 16" x 8 Corb, 2L⁹ at 15", 16" x 8 Corb, 2L⁹ at 15", 16" x 8 Corb, 2L⁹ at 15", 16" x 8 Corb.



80'-0" LOW TRUSS
1 PANEL SKEWED
20'-0" ROADWAY

ARKANSAS STATE HIGHWAY DEPARTMENT
 LITTLE ROCK, ARK.

Drawn By: *F.B.D.* Date: _____
 Traced By: _____ Date: *2/22/22*
 Checked By: _____ Date: _____
 BRIDGE NO. [] DRAWING NO. 1096

Scale: $\frac{1}{4}'' = 1'-0''$