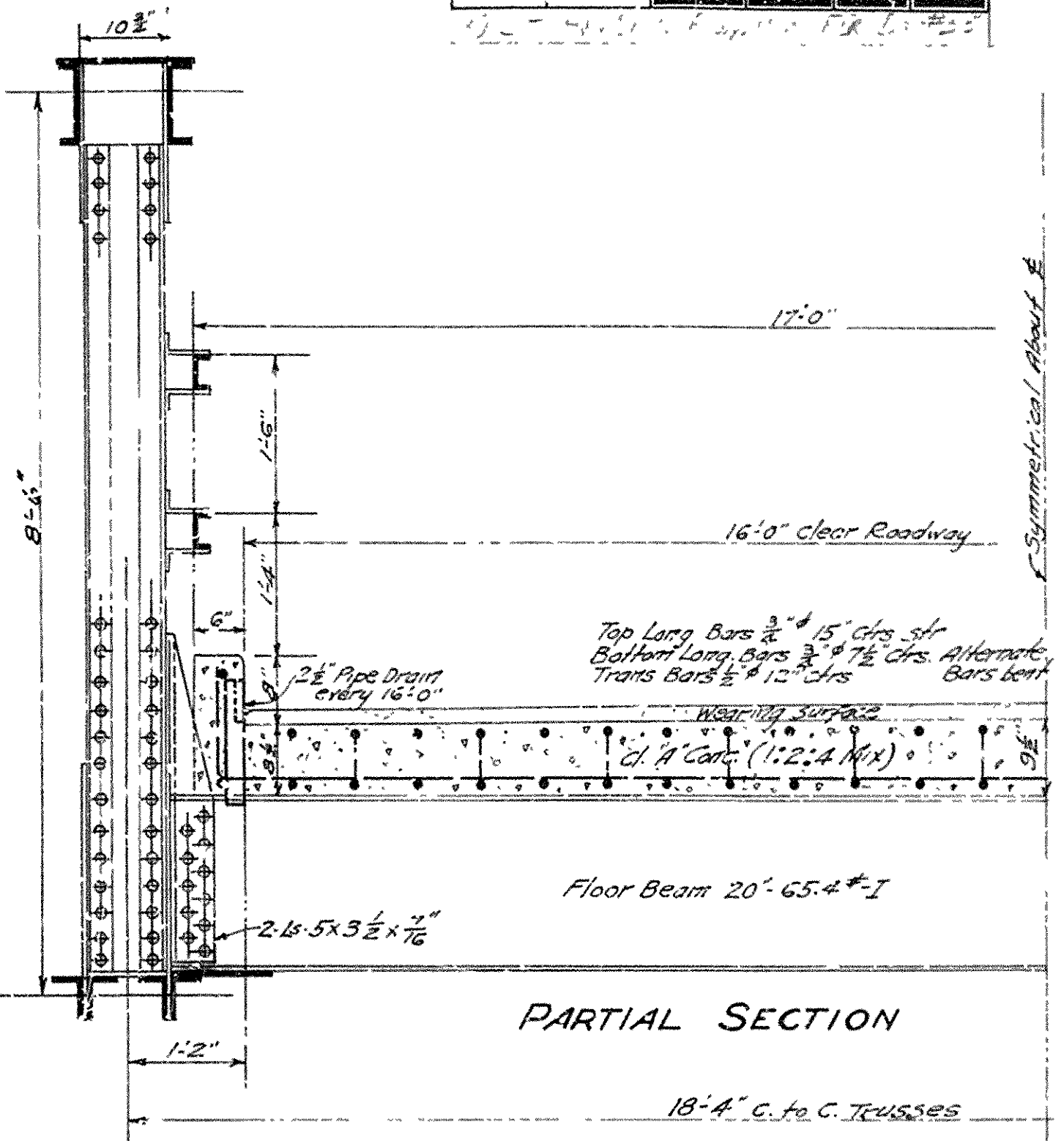
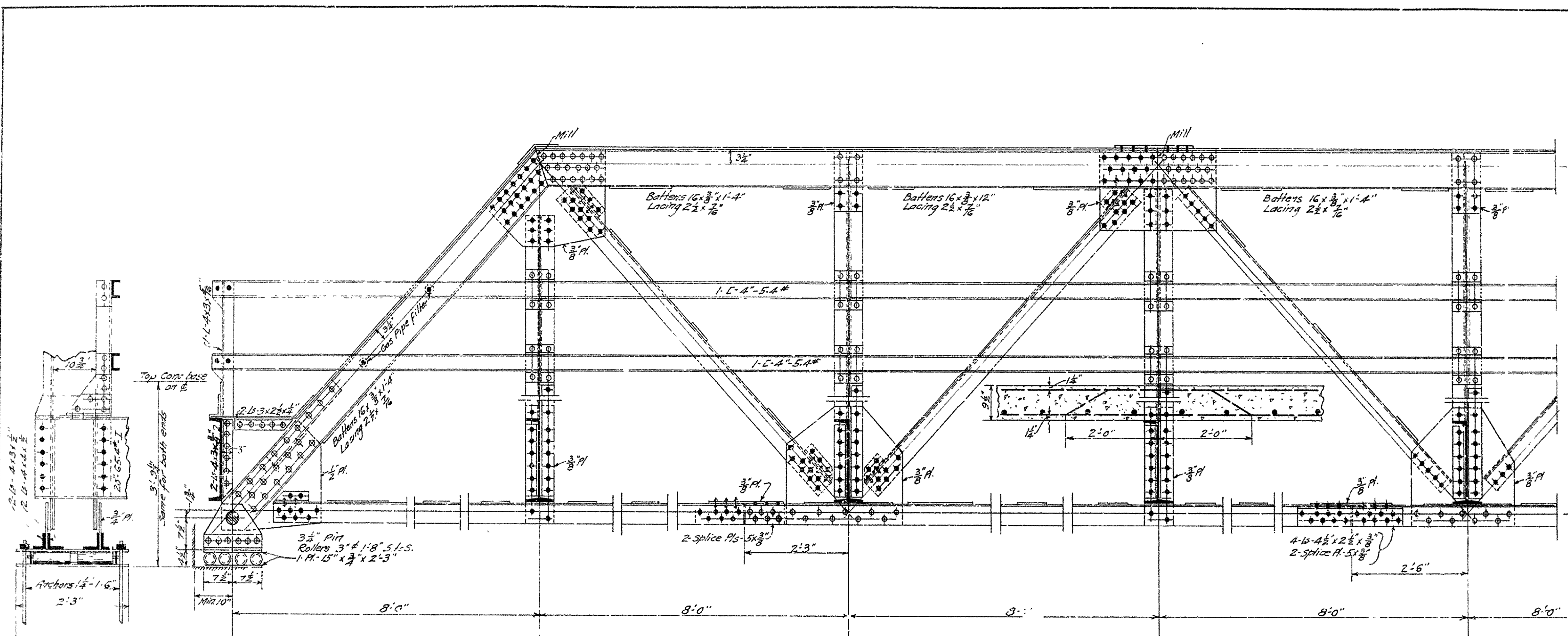
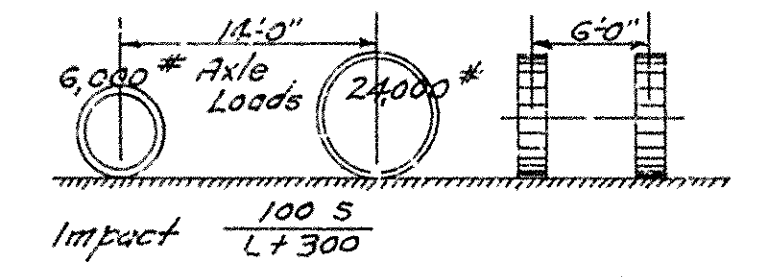


FED. ROAD DIST. NO.	STATE	FED. AID PROJ. NO.	FISCAL YEAR	SHEET NO.	TOTAL SHEETS
6	ARK.				



SPECIFICATIONS.
 Live Load - Uniform - 80 lbs. per square foot of Roadway
 Concentrated - 1-15 Ton Truck as shown



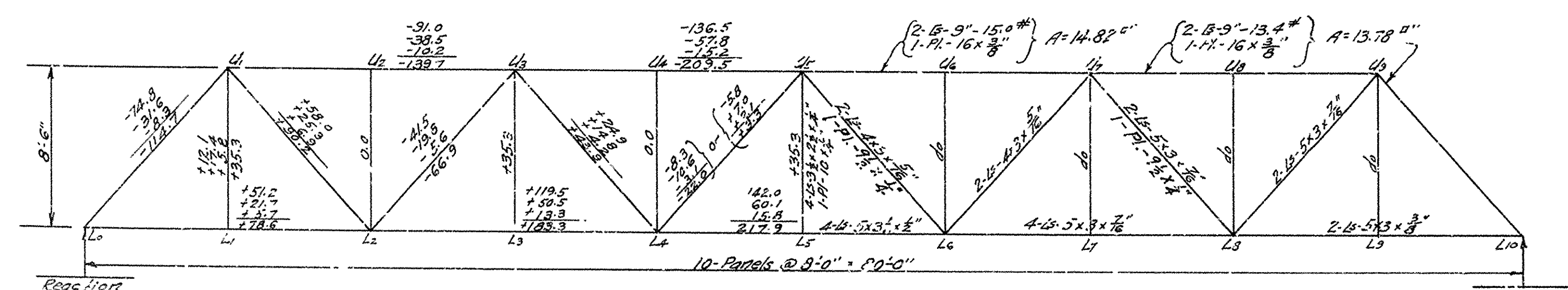
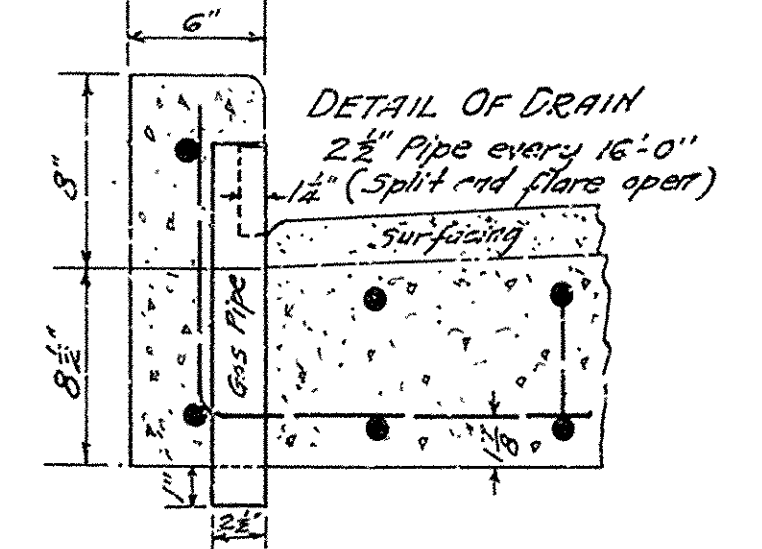
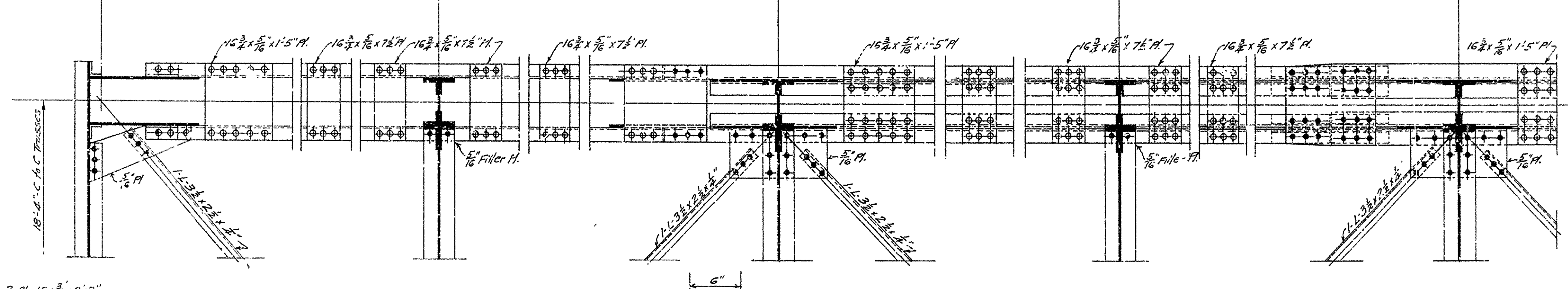
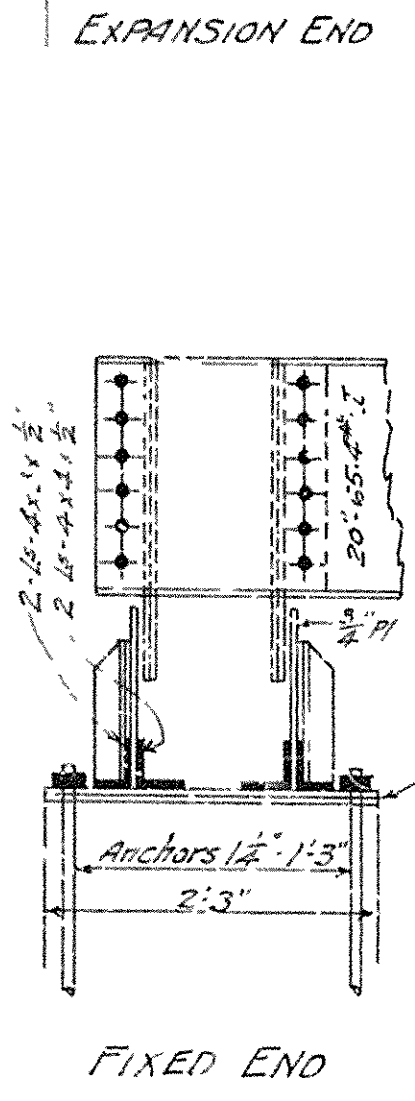
Unit Stresses - See Arkansas Highway Department Specifications
 Rivets - 3/4" diam.
 Open Holes - 1/8" diam.
 All field connections riveted. Rivet holes in tension members are to be so spaced that not more than one hole is deducted from area of cross-section of each angle at point of maximum stress.
 Shop Paint - One coat red lead and raw linseed oil.
 Field Paint - Two coats of different colors as approved by the engineer.
 Batten plates spaced not over 3'-0" c. to c.

FLOOR BEAMS
 D.L.M. = 5/8 x 12.15 x 13.33 = 51,000 #
 L.L.M. = 7.67 x 14,000 = 76,700 #
 Impact 32% = 24,500 #
 Total = 152,200 #
 152,200 x 12 / 16,000 = 114.2 = Req'd Sec Mod.
 Use 20' 65.4" I, Sec. Mod. = 116.9

Estimated weight of structural steel = 52,500 #
 Estimated weight of Reinforcing steel = 6,700 #
 and 41.2 c.y. C.I.'s Conc. in floor slab.

NOTE: - This drawing is general only. Shop drawings must be made in compliance with specifications and must be submitted and approved before fabrication begins.

Concrete: 1:2:4 Mix. Max. Agg. 1". If wear comes directly on concrete floor slab increase thickness of slab 1" and change proportions to 1:2:3 Mix.



STANDARD PLAN
 80-FT. STEEL HIGHWAY BRIDGE
 16' ROADWAY - CONC. FLOOR
 ARKANSAS HIGHWAY DEPARTMENT
 LITTLE ROCK, ARK.

DESIGNED N.B.G.
 TRACED C.J.P.
 CHECKED N.B.G.
 REVISIONS 17/23/24

Approved - Chairman, Arkansas State Highway Commission
 By: State Highway Engineer
 Mar. 1924.

STATE STANDARD No. F-508A
 DESIGN NO. 5