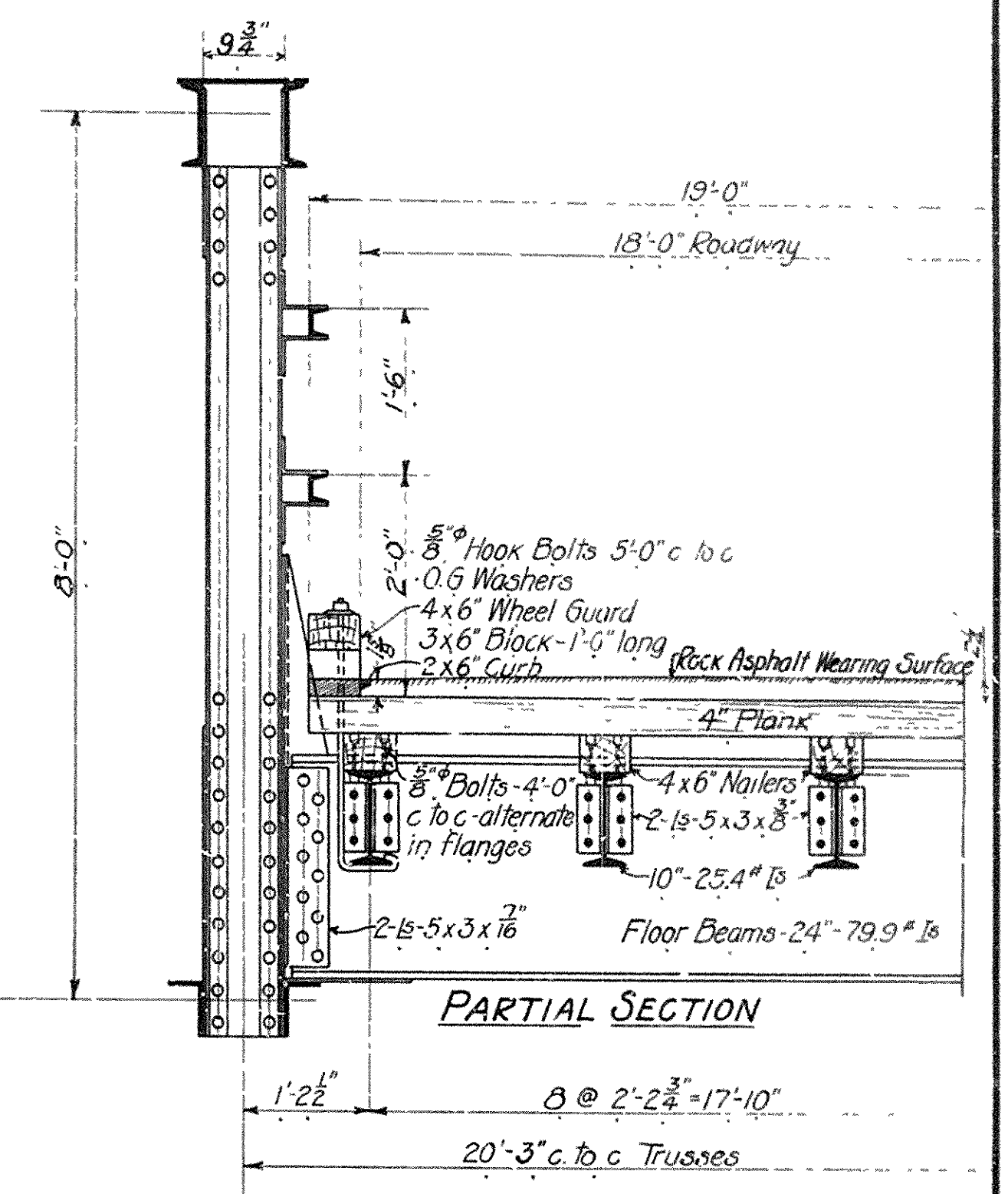
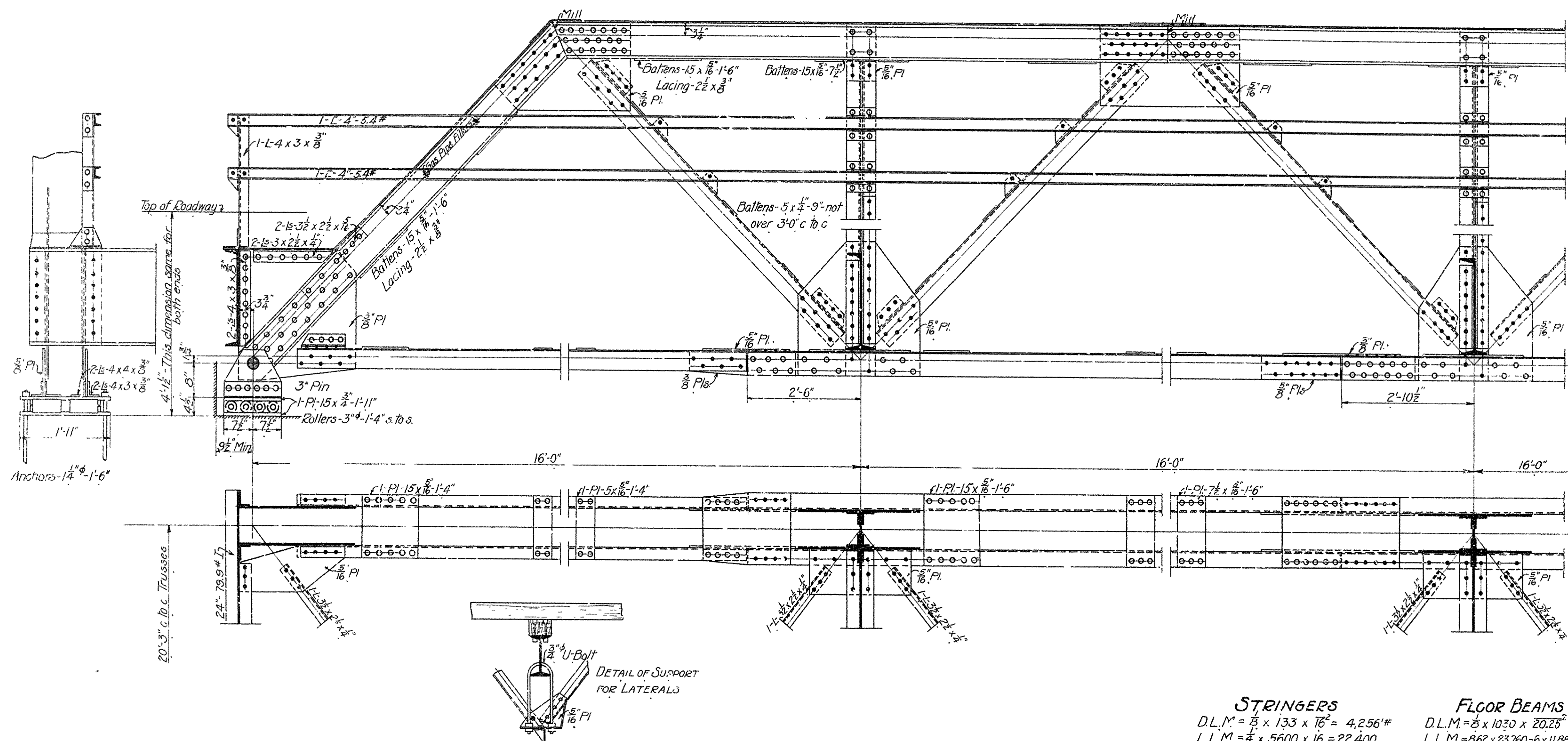
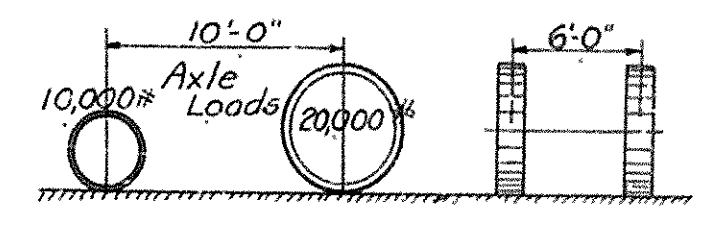


F.D. ROAD DIST. NO.	STATE	FED. AID PROJ. NO.	FISCAL YEAR	SHEET NO.	TOTAL SHEETS
6	ARK.	169	1922	5	7



SPECIFICATIONS

Live Load - Uniform - 80 lbs per square foot of roadway.
 Concentrated - Two 15-Ton Trucks as shown below

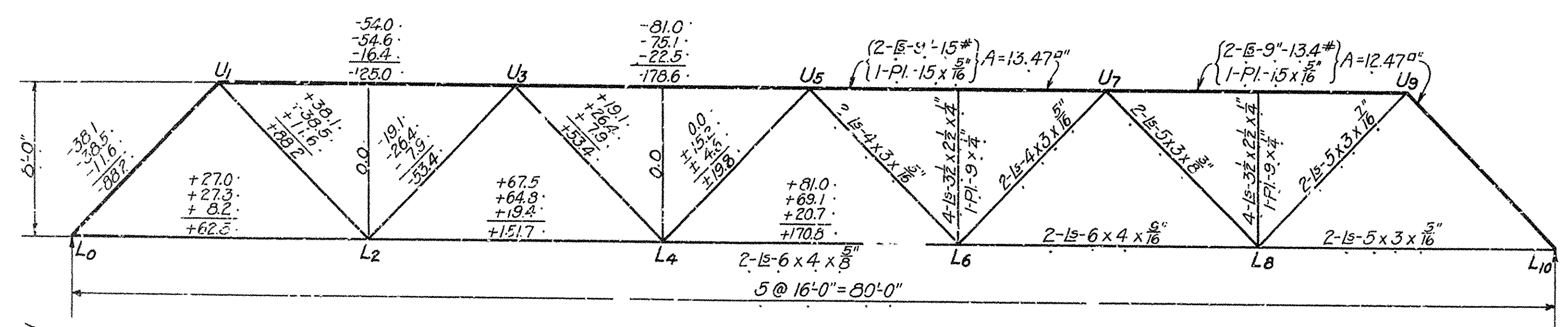


Impact - 30% of live load
 Rivets - 3/4" diam.
 Open Holes - 1 1/8" diam
 All field connections riveted. Rivet holes in tension members are to be so spaced that not more than one hole is deducted from area of cross-section of each angle at point of maximum stress.
 Shop Paint - One coat red lead and boiled linseed oil
 Field Paint - Two coats of different colors as approved by the eng'r
 Ballens spaced not over 3'-0" c to c
 Rock Asphalt Wearing Surface - See specifications; 165 sq yds
 Estimated weight of steel = 59,800#
 Lumber = 8190 Ft. B.M.

STRINGERS
 D.L.M. = $\frac{1}{8} \times 133 \times 16^2 = 4,256\#$
 L.L.M. = $\frac{1}{4} \times 5600 \times 16 = 22,400$
 Impact 30% = 6,720
 Total = 33,376#
 $\frac{33,376 \times 12}{16,000} = 24.9 = \text{Sec. Mod. Req'd.}$
 Use 10"-25.4# I - Sec. Mod. = 24.4

FLOOR BEAMS
 D.L.M. = $\frac{1}{8} \times 1070 \times 20.25^2 = 52,900\#$
 L.L.M. = $862 \times 23,760 - 6 \times 11,880 = 133,750$
 Impact 30% = 40,125
 Total = 226,775#
 $\frac{226,775 \times 12}{16,000} = 170.0 = \text{Sec. Mod. Req'd.}$
 Use 24"-79.9# I - Sec. Mod. = 173.9

NOTE - This drawing is general only. Shop drawings must be made in compliance with specifications and must be submitted and approved before fabrication begins.



STANDARD PLAN
 80-FT. STEEL HIGHWAY BRIDGE
 18-FT. ROADWAY-ROCK ASPHALT WEARING SURFACE
 ARKANSAS HIGHWAY DEPARTMENT
 LITTLE ROCK, ARK.

Approved: _____
 Commissioner State Lands, Highways & Improvements

By: _____
 State Highway Engineer
 Nov. 1922

DESIGNED	N.B.G.
TRACED	E.H.F.
CHECKED	
REVISIONS	12/1/23

STATE STD. NO F-608-A