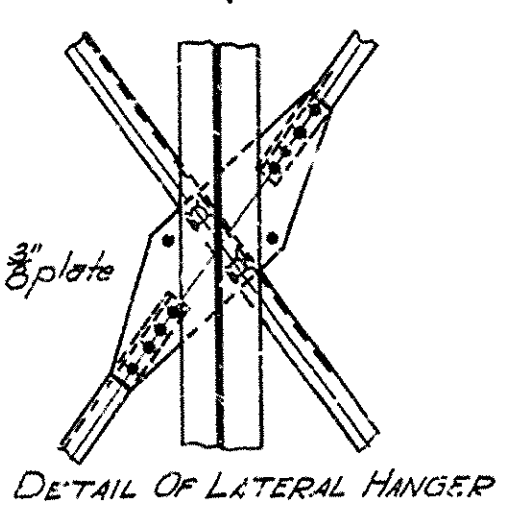
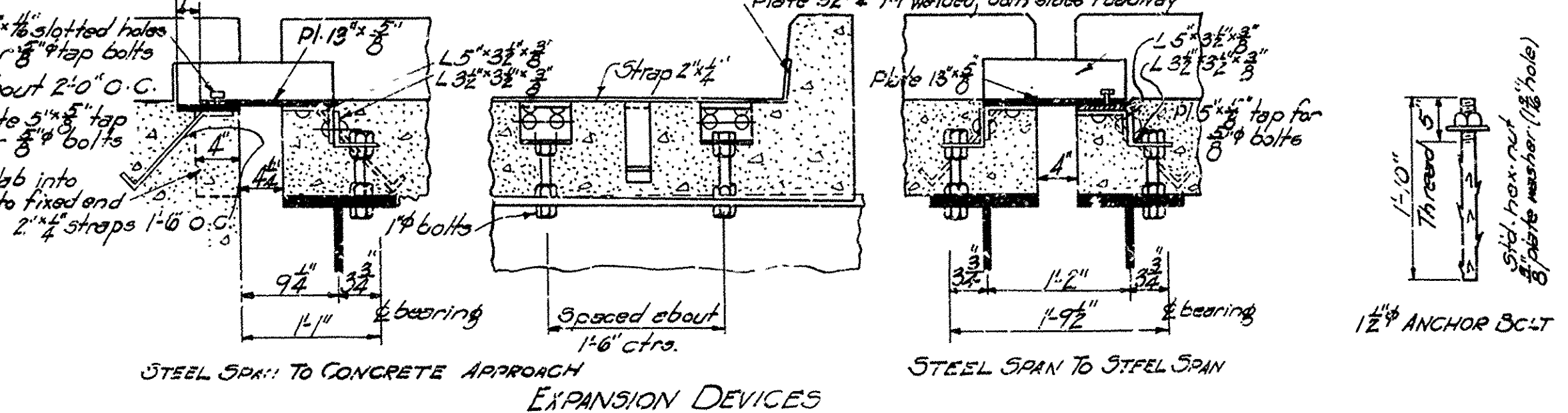
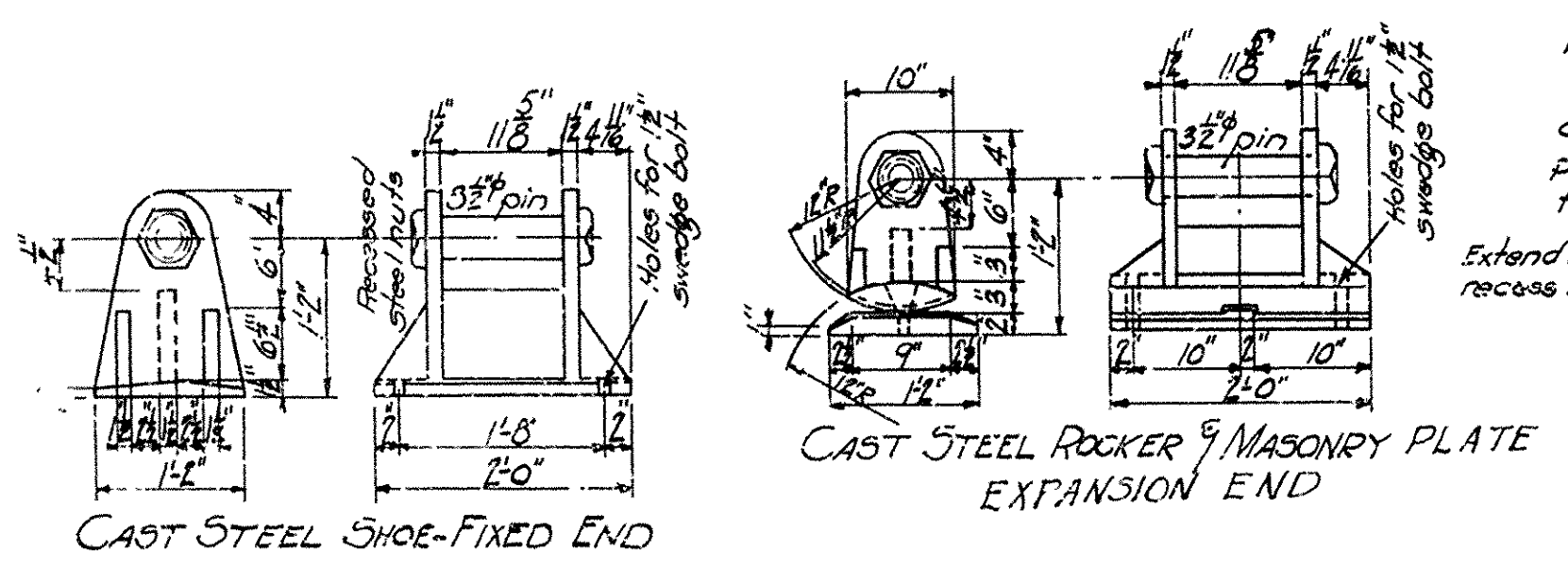
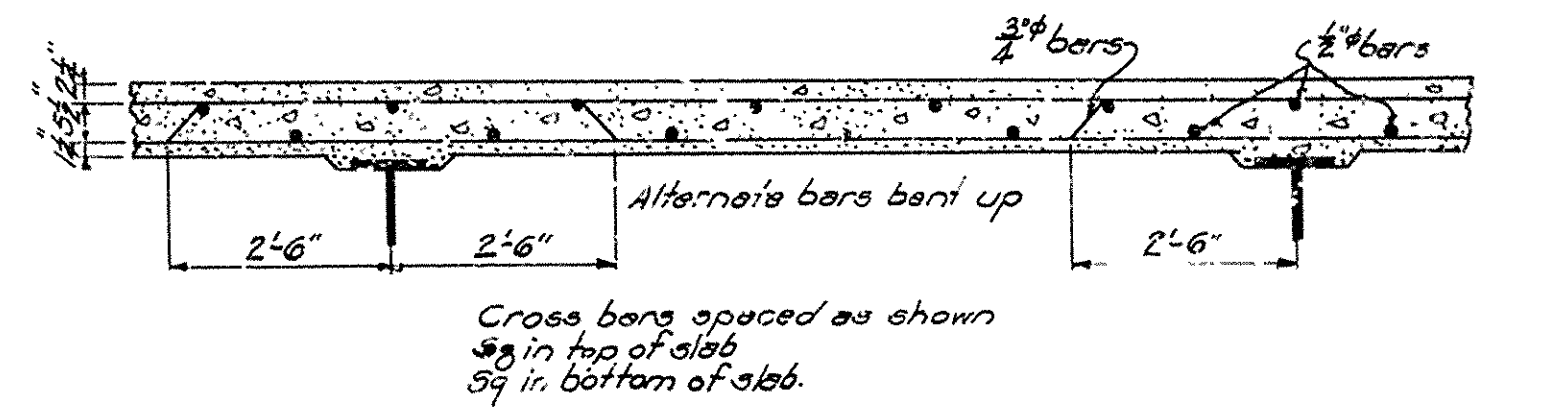
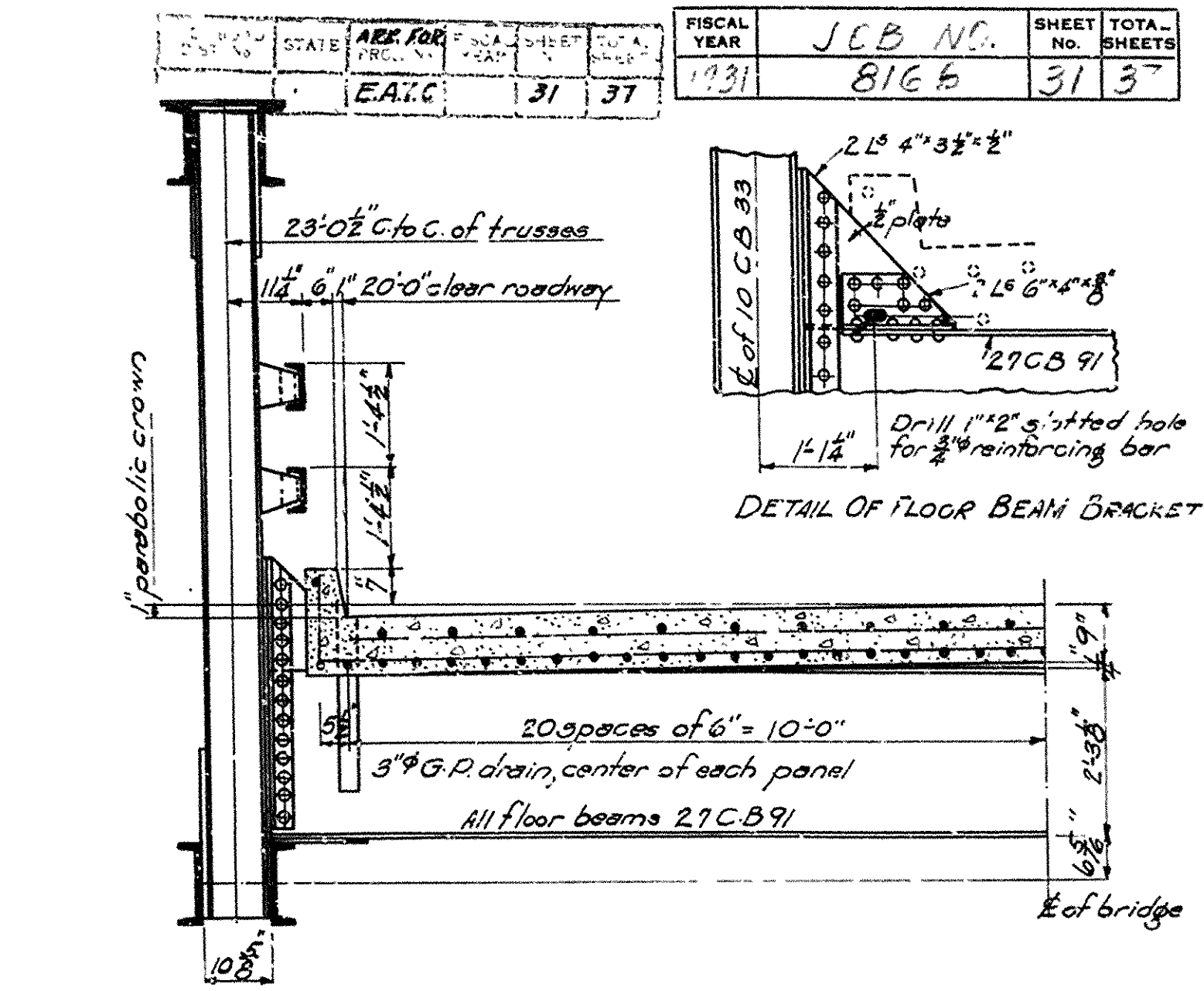
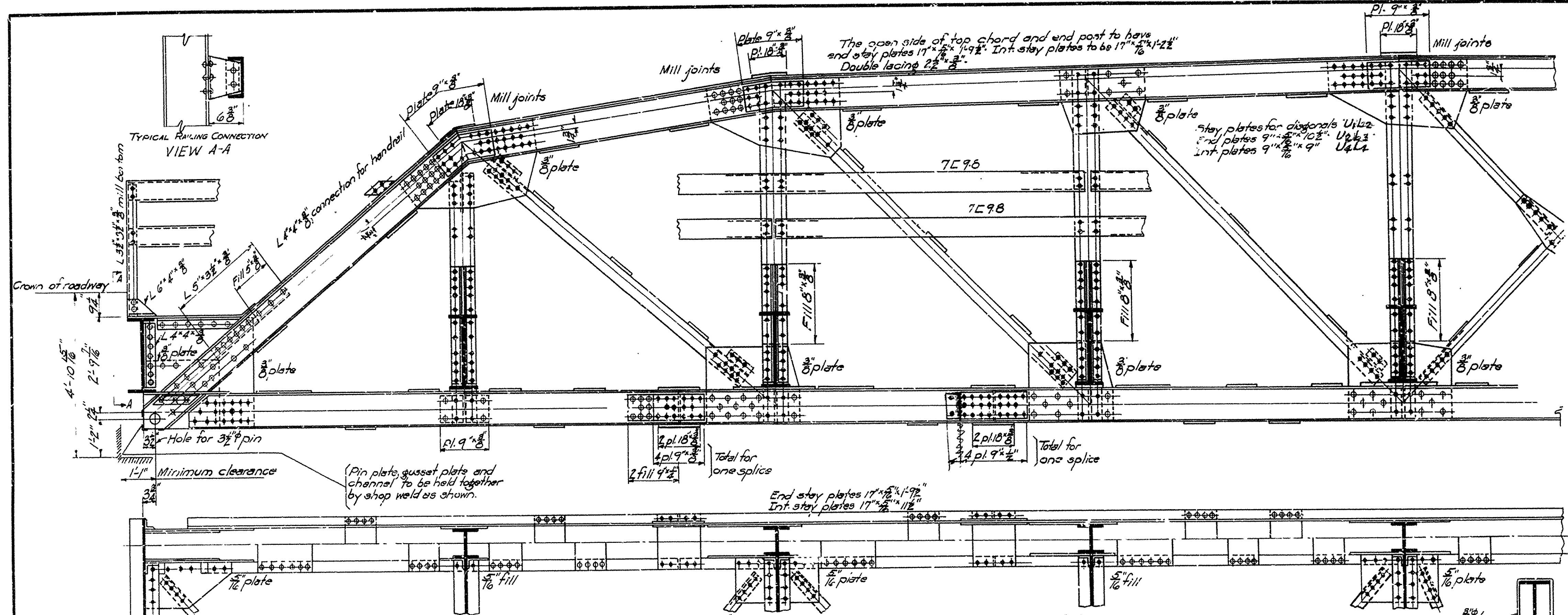


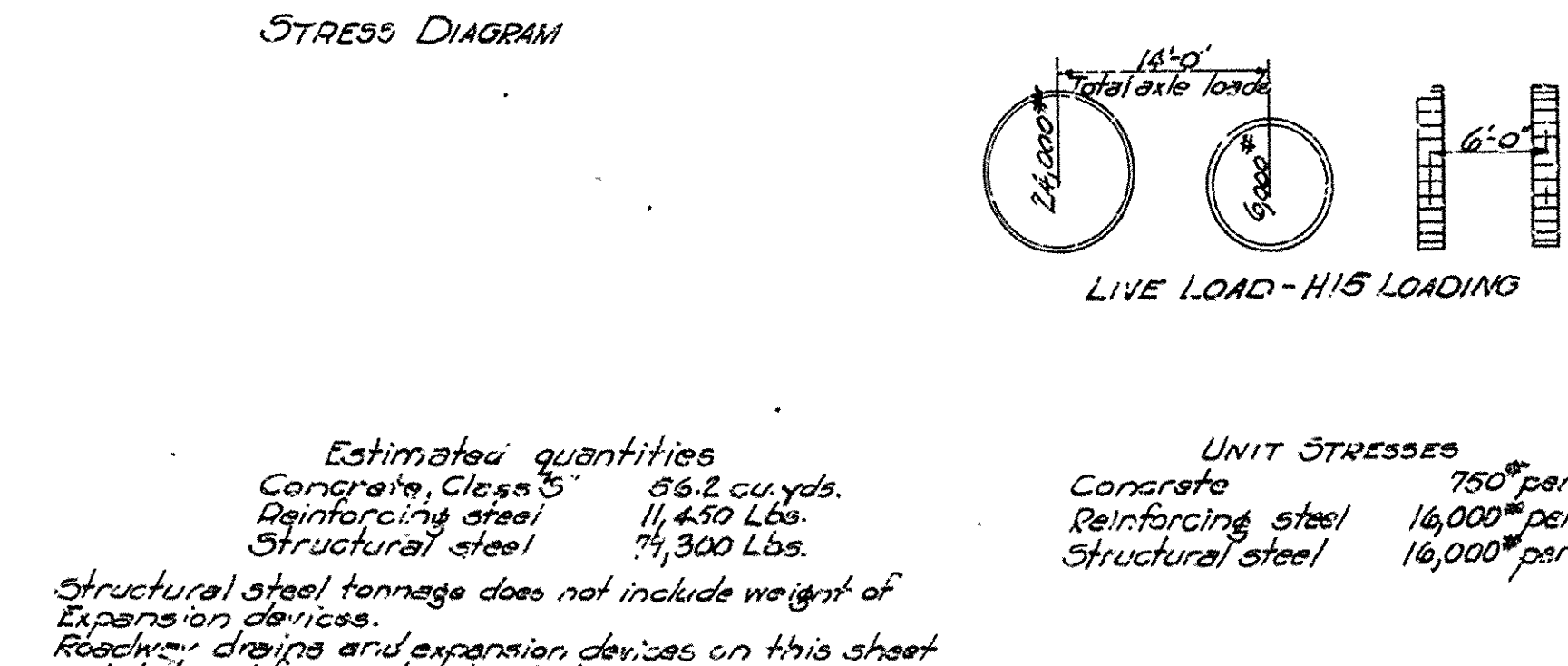
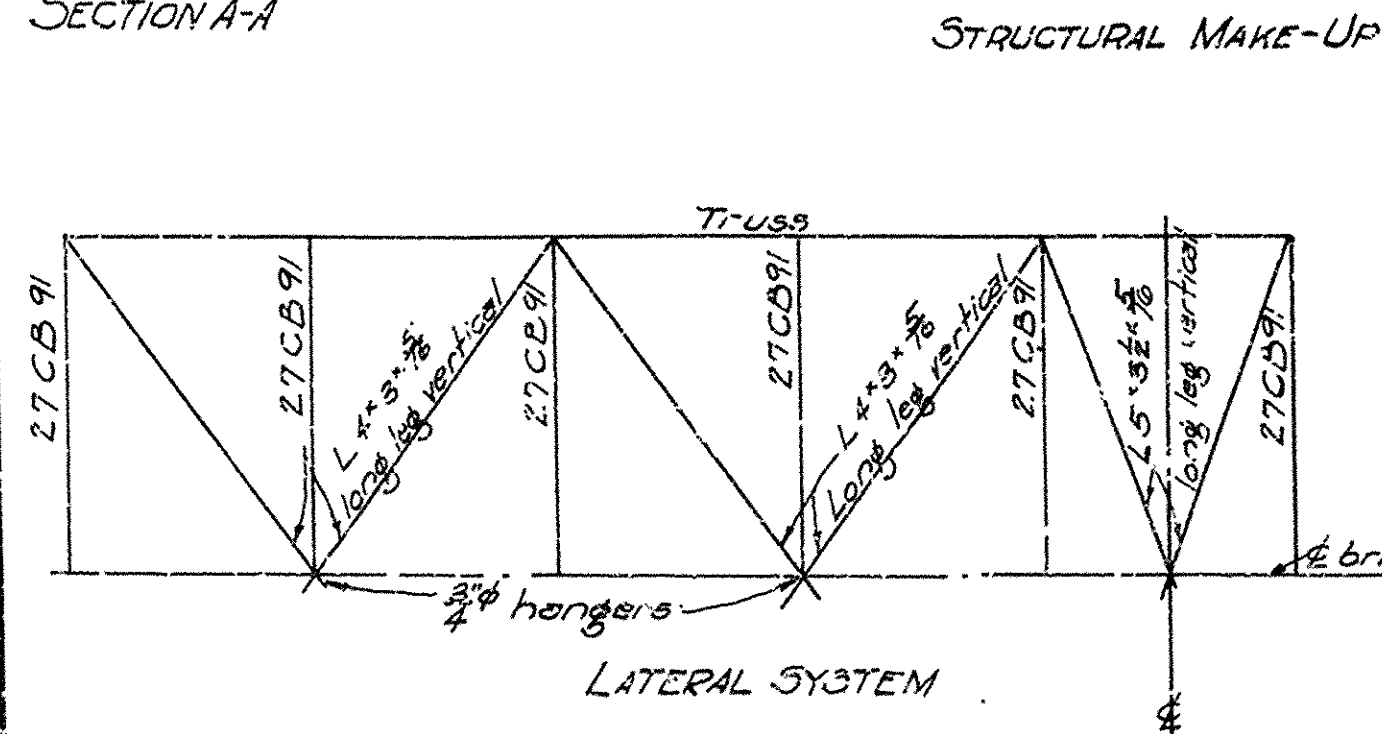
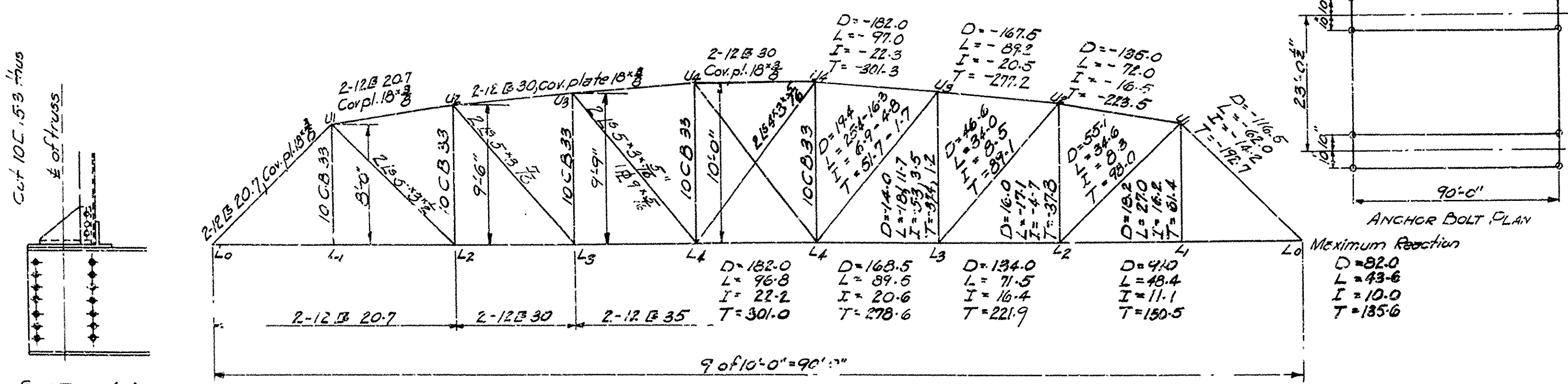
STATE	ARK.	FISCAL YEAR	1931	J.C.B. NO.	8166	SHEET NO.	31	TOTAL SHEETS	37
-------	------	-------------	------	------------	------	-----------	----	--------------	----



Slab reinforcing (One span)

Mark	N°	Size	Length	Bending diagram
51	44	3/4"	27'-3"	
52	44	3/4"	32'-3"	
53	22	3/4"	42'-0"	Straight
54	22	3/4"	52'-0"	Straight

Mark	N°	Size	Length	Bending diagram
55	42	3/4"	24'-9"	
56	42	3/4"	26'-2"	
57	21	3/4"	16'-0"	
58	46	3/4"	20'-7"	Straight
59	47	3/4"	23'-3"	



Notes
 Rivets 3/4" Open holes 1/2"
 All holes in truss connections to be subpunched 3/8" and reamed to size while truss is assembled; this applies to field as well as shop rivets.
 Floor beam connections to be subpunched 3/8" and reamed to a metal template.
 All field connections shall be riveted.
 Shop paint: After being completely assembled and shop work finished, all pieces shall be given one coat of red lead and raw linseed oil before shipment.
 Field paint: Apply two coats in accordance with specifications or special provisions.
 Floor slabs: Concrete to be Class 5. One inch, has been added for wear.
 All floor beams to be milled to exact length after framing angles have been riveted.
 Shapes of equal or greater strength may be substituted for the structural shapes shown, but payment will be made in accordance with sizes given on this plan.
 This drawing shows general features of design only.
 Shop drawings shall be made in compliance with specifications, submitted and approved before fabrication.
 Specifications: Arkansas Highway and Bridge Specifications adopted May 30, 1925 and revised.

Estimated quantities
 Concrete, Class 5 66.2 cu. yds.
 Reinforcing steel 11,450 Lbs.
 Structural steel 7,300 Lbs.
 Structural steel tonnage does not include weight of expansion devices.
 Roadway, drains and expansion devices on this sheet are to be paid for as structural steel.

UNIT STRESSES
 Concrete 750# per sq. in.
 Reinforcing steel 16,000# per sq. in.
 Structural steel 16,000# per sq. in.

STANDARD PLAN
90'-0" LOW TRUSS SPAN
20'-0" CLEAR ROADWAY
ARKANSAS STATE HIGHWAY COMMISSION
 LITTLE ROCK, ARK.
 Drawn By: LD Date: 7-7-31
 Traced By: Good Date: 7-7-31
 Checked By: _____ Date: _____
 Scale: 1/2" = 1'-0"
 BRIDGE NO. _____ DRAWING NO. 3516

M.B. Lewis
 BRIDGE ENGINEER