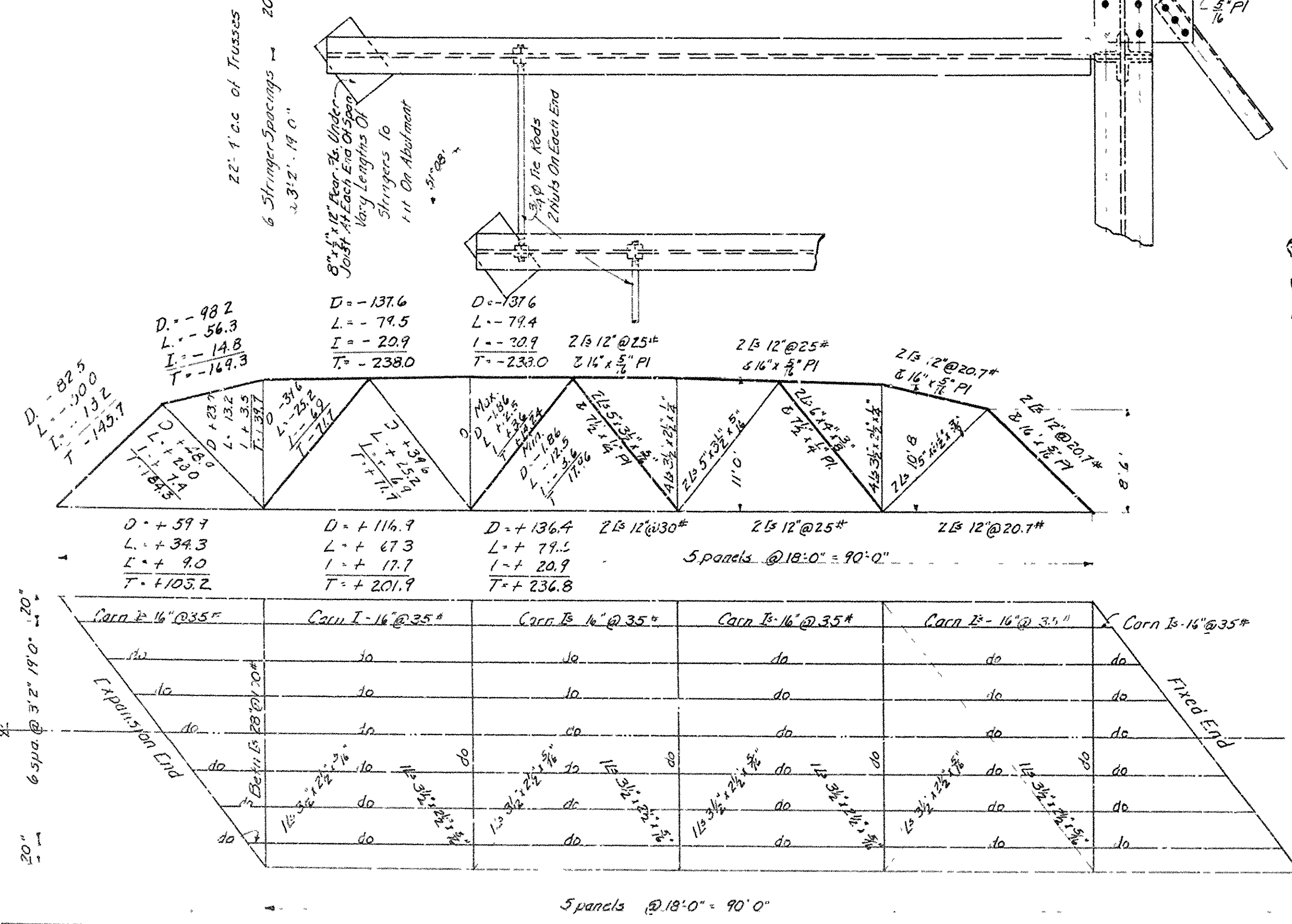
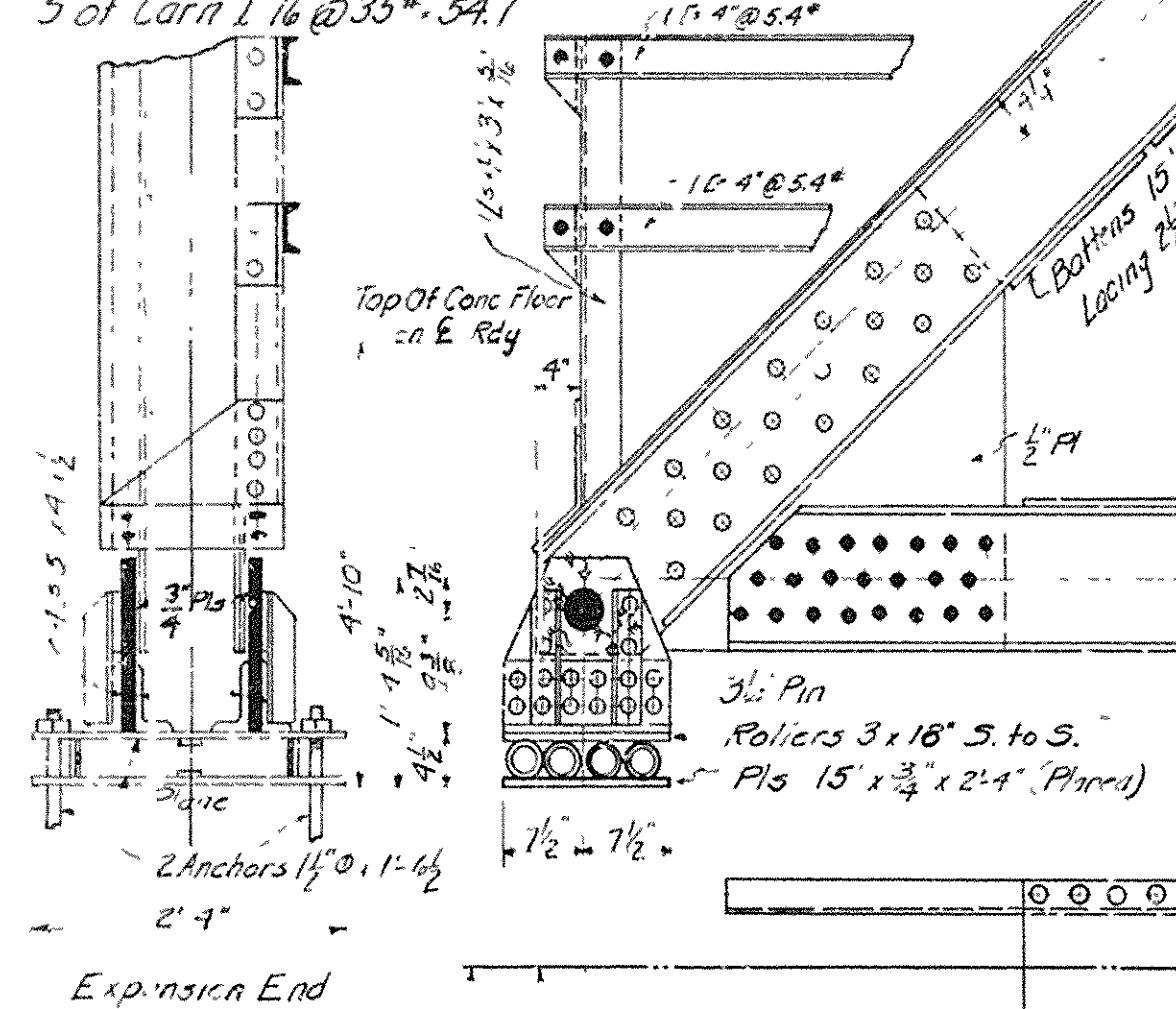
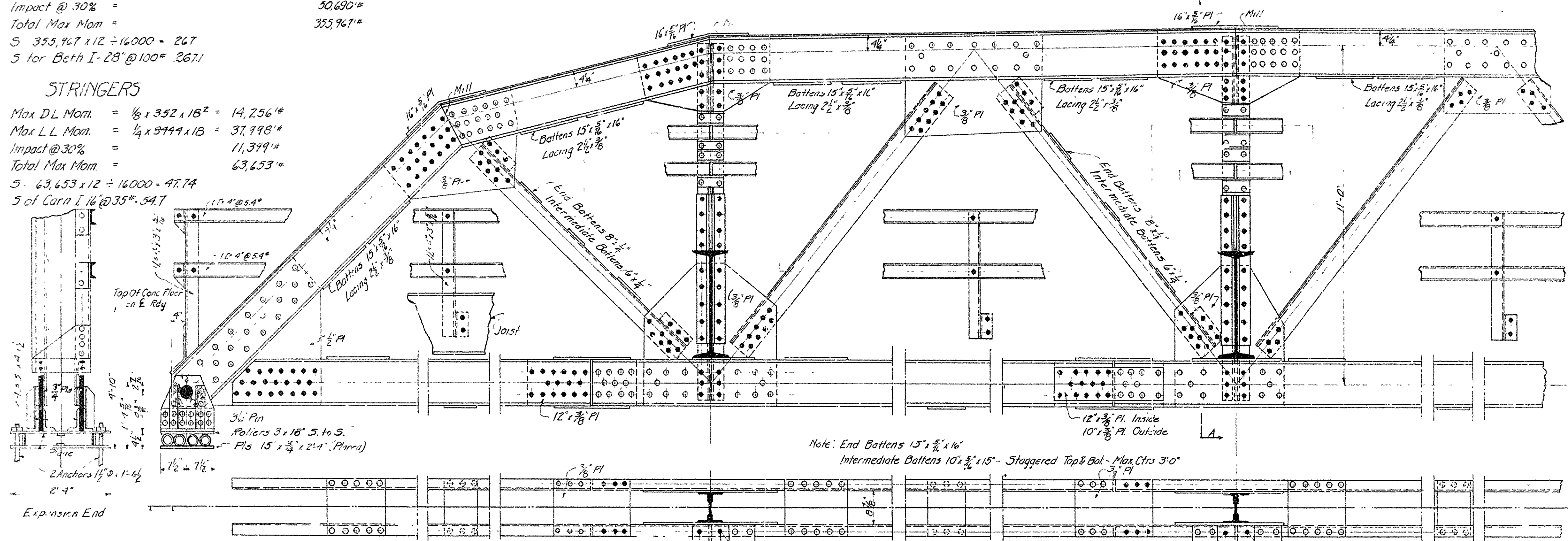


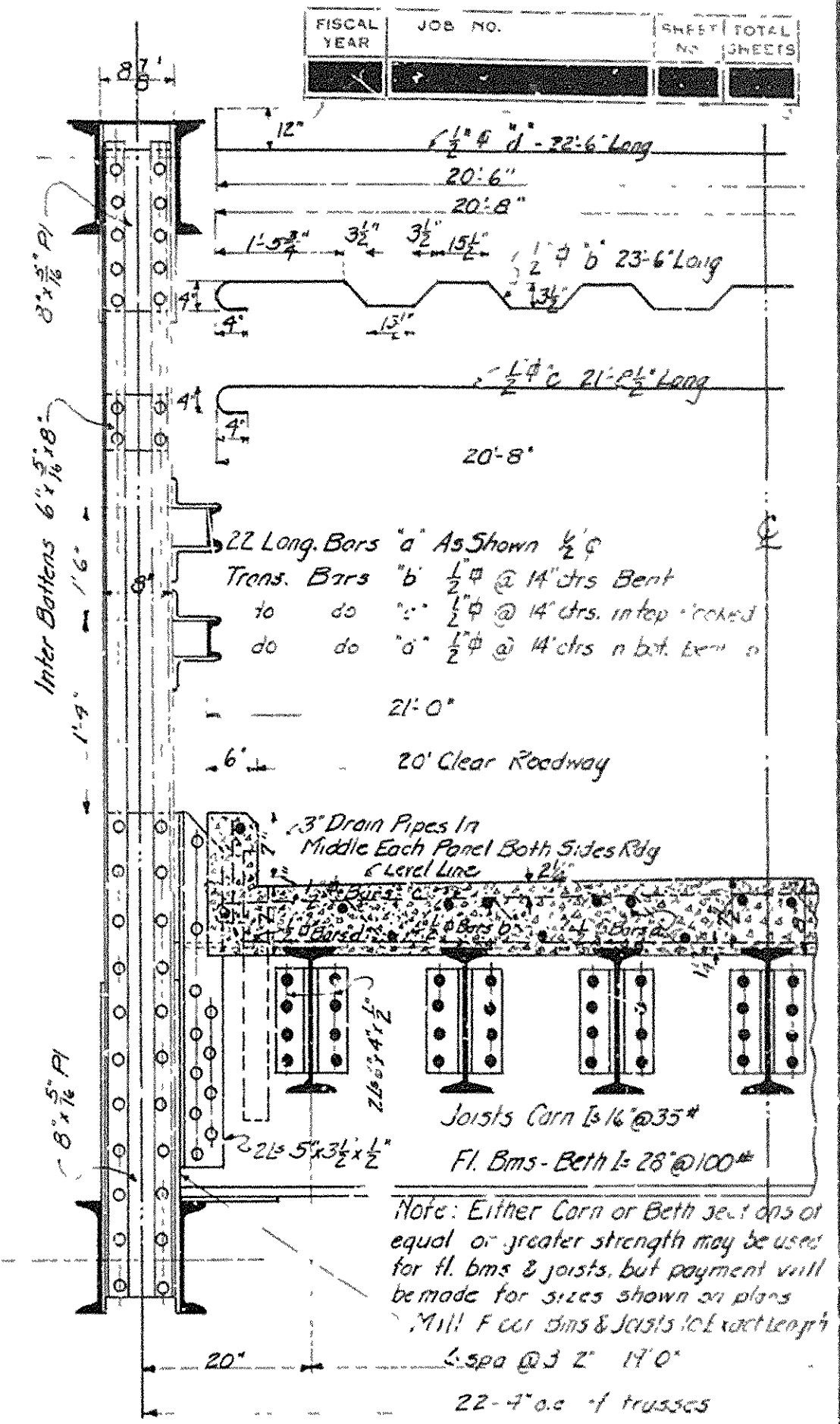
ESTIMATED QUANTITIES
Structural Steel - 60,400 lbs.
Reinforcing Steel - 6,120 lb.
Class "5" Concrete - 46.61 cu yds

FLOOR BEAMS
Max DL Mom = $\frac{1}{8} \times 48,835 \times 22.33 = 136,311'$
Max LL Mom = $25,333 \times 11.17 - 12,667(1.5 + 7.5) = 108,966'$
Impact @ 30% = 50,690'
Total Max Mom = 355,967'
S 355,967 x 12 = 16000 = 267
S for Beth I - 28' @ 100' = 267

STRINGERS
Max DL Mom = $\frac{1}{8} \times 352 \times 18^2 = 14,256'$
Max LL Mom = $\frac{1}{4} \times 5944 \times 18 = 37,998'$
Impact @ 30% = 11,399'
Total Max Mom = 63,653'
S 63,653 x 12 = 16000 = 47.74
S of Cora I 16' @ 35" = 5A7



Note: End Battens 15' x 5/8" x 16"
Intermediate Battens 10' x 5/8" x 15" - Staggered Top & Bot - Max Ctrs 3'-0"



PARTIAL SECTION A-A

SPECIFICATIONS

LIVE LOAD Uniform - 90 lbs per sq ft of roadway
Concentrated - 2-15 ton trucks as shown
Impact - 100% (L+300)
Unit Stresses - See Ark State Highway Dept Specifications 5-30 25
Rivets - 3/4" in diam.
Open Holes - Punch rivet holes in main members 3/16" smaller than rivets. Peam to 1/4" larger than rivet specified during shop assembly
All field connections riveted. Rivet holes in tension members so spaced that only one hole is deducted from each angle at point of maximum stress. Deduct 3 holes in each channel
Shop Paint - One coat red lead & raw linseed oil
Field Paint - Two coats of different colors as at...
Batten Plates spaced not over 3'-0" ctrs on tension members.
Concrete floor slab - Class "5" Extra 1" added for wear
Stringers & floor beams milled to exact length.
This drawing is general only. Shop drawings must be made in compliance with specifications, must be submitted & approved before fabrication begins.

90'-0" PONY TRUSS - 1 PANEL SKEW - 20'-0" RDY.

ROUTE SEC.
ARKANSAS STATE HIGHWAY DEPARTMENT
LITTLE ROCK, ARK.
Scale: in. ft.
DRAWING NO. 94

FLOOR BEAM END OF TRUSS

W.B. Jones
BRIDGE ENGINEER

Drawn By: J.M.L. Date: 2-6-28
Traced By: J.M.L. Date: 2-8-28
Checked By: M. Date: 2-8-28