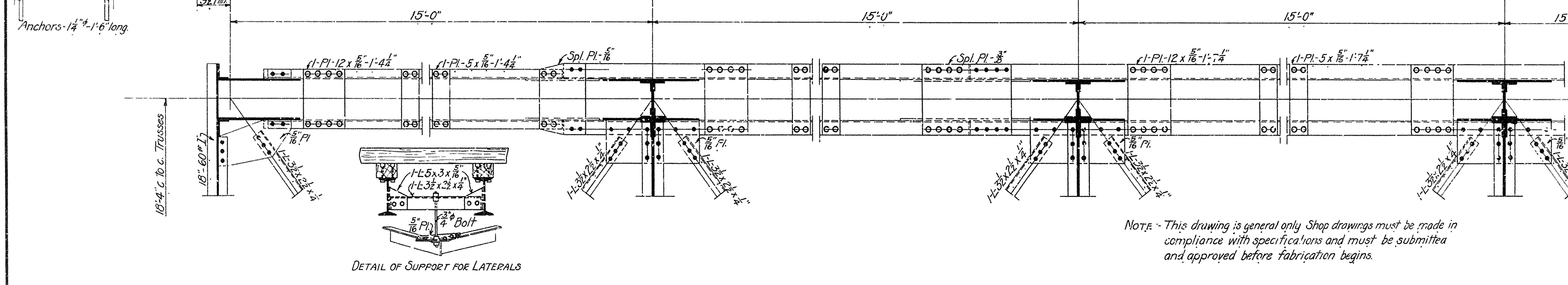
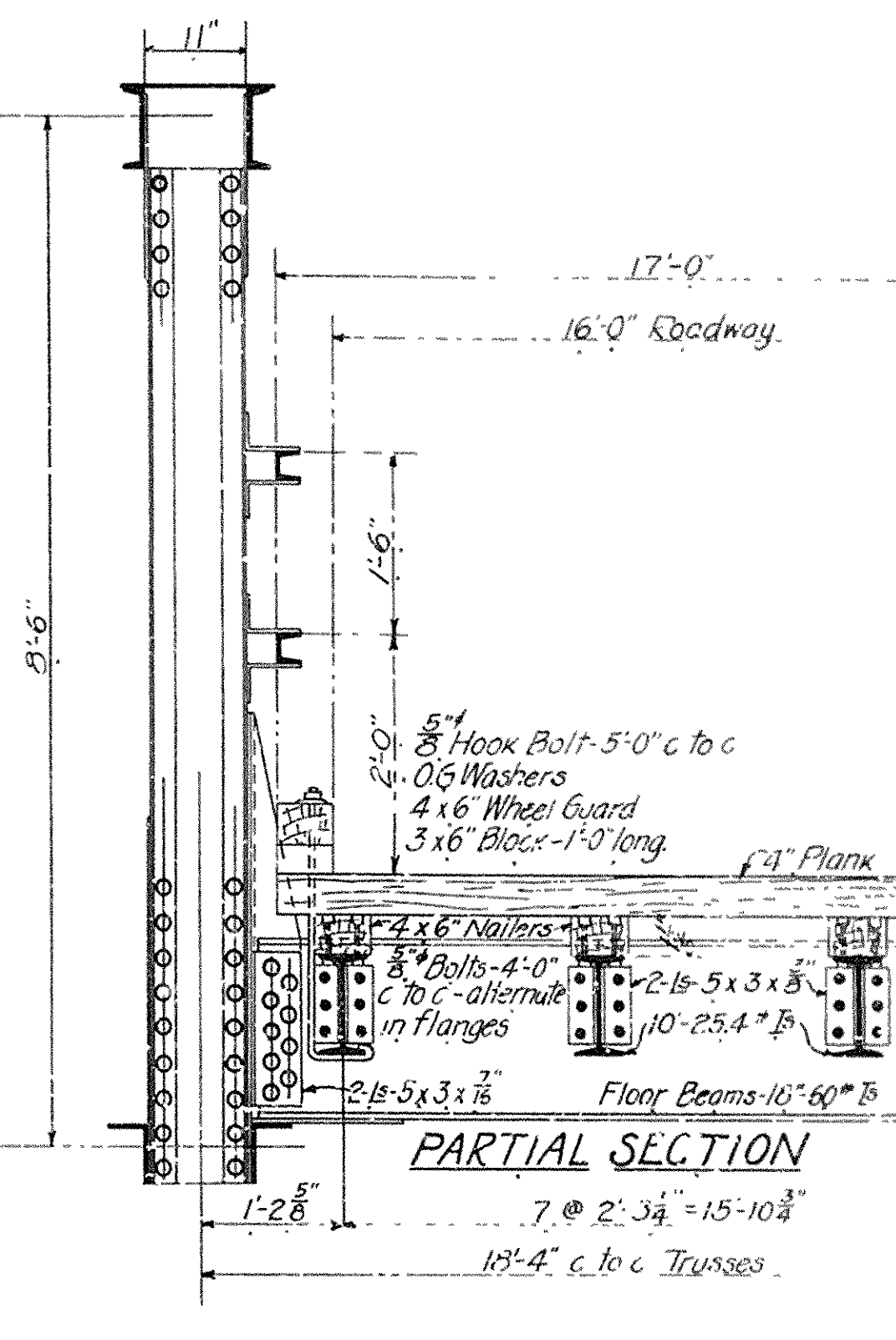
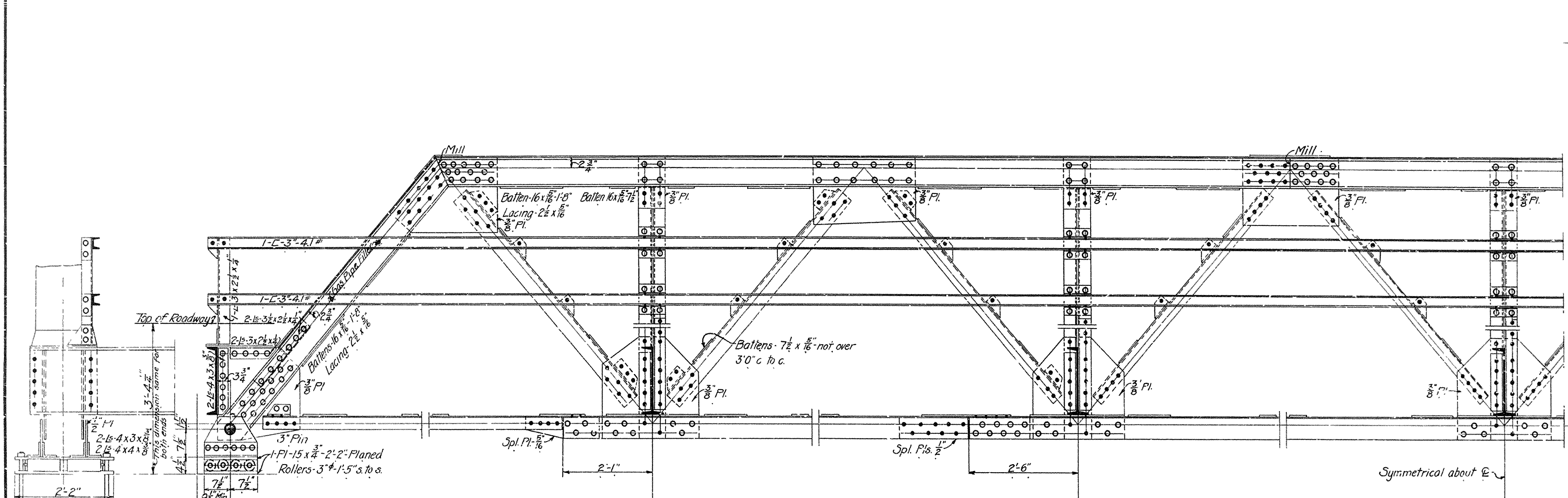
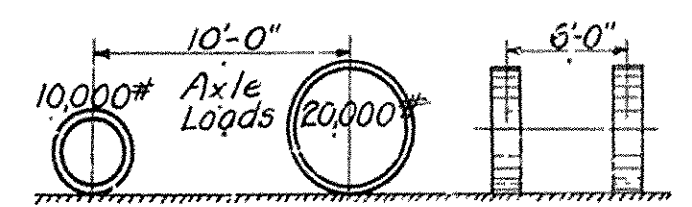


FED. ROAD DIST. NO.	STATE	FED. AID PROJ. NO.	FISCAL YEAR	SHEET NO.	TOTAL SHEETS



**SPECIFICATIONS**

Live Load - Uniform - 80\* per square foot of roadway  
 Concentrated - 15' Ton Truck as shown below



Impact - 30% of live load  
 Unit Stresses - See Arkansas Highway Department Specifications  
 Rivets - 3/4" diam.  
 Open Holes - 1/8" diam.  
 All field connections riveted. Rivet holes in tension members are to be so spaced that not more than one hole is deducted from area of cross-section of each angle at point of maximum stress.  
 Shop Paint - One coat red lead and boiled linseed oil  
 Field Paint - Two coats of different colors as approved by H.E. Eng'r.  
 Batten plates spaced not over 3'-0" c to c  
 Estimated weight of steel = 59,040\*  
 Lumber - 8,165 F. B. M.

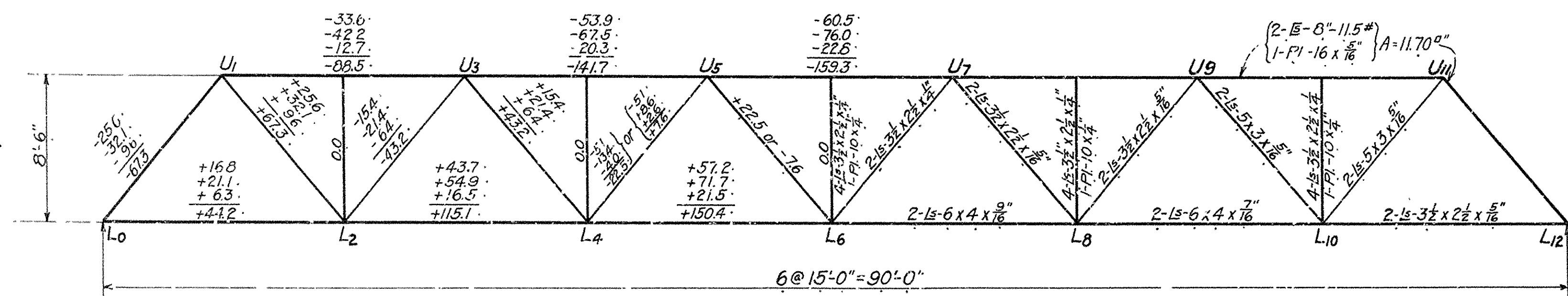
NOTE - This drawing is general only Shop drawings must be made in compliance with specifications and must be submitted and approved before fabrication begins.

**STRINGERS**

D.L.M. = 1/8 x 75 x 15 = 2,110\*  
 L.L.M. = 1/4 x 5620 x 15 = 21,100  
 Impact 30% = 6,330  
 Total = 29,540\*  
 $\frac{29,540 \times 12}{16,000} = 22.1 = \text{Sec. Mod. Req'd.}$   
 Use 10" - 25.4# I<sub>s</sub> - Sec. Mod. = 24.4

**FLOOR BEAMS**

D.L.M. = 1/8 x 555 x 18.33 = 23,300\*  
 L.L.M. = 1/4 x 9750 = 74,800  
 Impact 30% = 22,440  
 Total = 120,540\*  
 $\frac{120,540 \times 12}{16,000} = 90.3 = \text{Sec. Mod. Req'd.}$   
 Use 18" - 60# I<sub>s</sub> - Sec. Mod. = 93.1



END REACTION  
 DL = 236  
 LL = 209  
 I = 86  
 T = 610

DESIGNED	N.B.G.
TRACED	E.H.F.
CHECKED	
REVISIONS	

**STANDARD PLAN**  
 90-FT. STEEL HIGHWAY BRIDGE  
 16' ROADWAY  
 ARKANSAS HIGHWAY DEPARTMENT  
 LITTLE ROCK, ARK.

Approved: \_\_\_\_\_  
 Comm. for State Lands, Highways & Improvements

By: \_\_\_\_\_  
 State Highway Engineer  
 Oct. 1922

STATE STANDARD No F-309-A