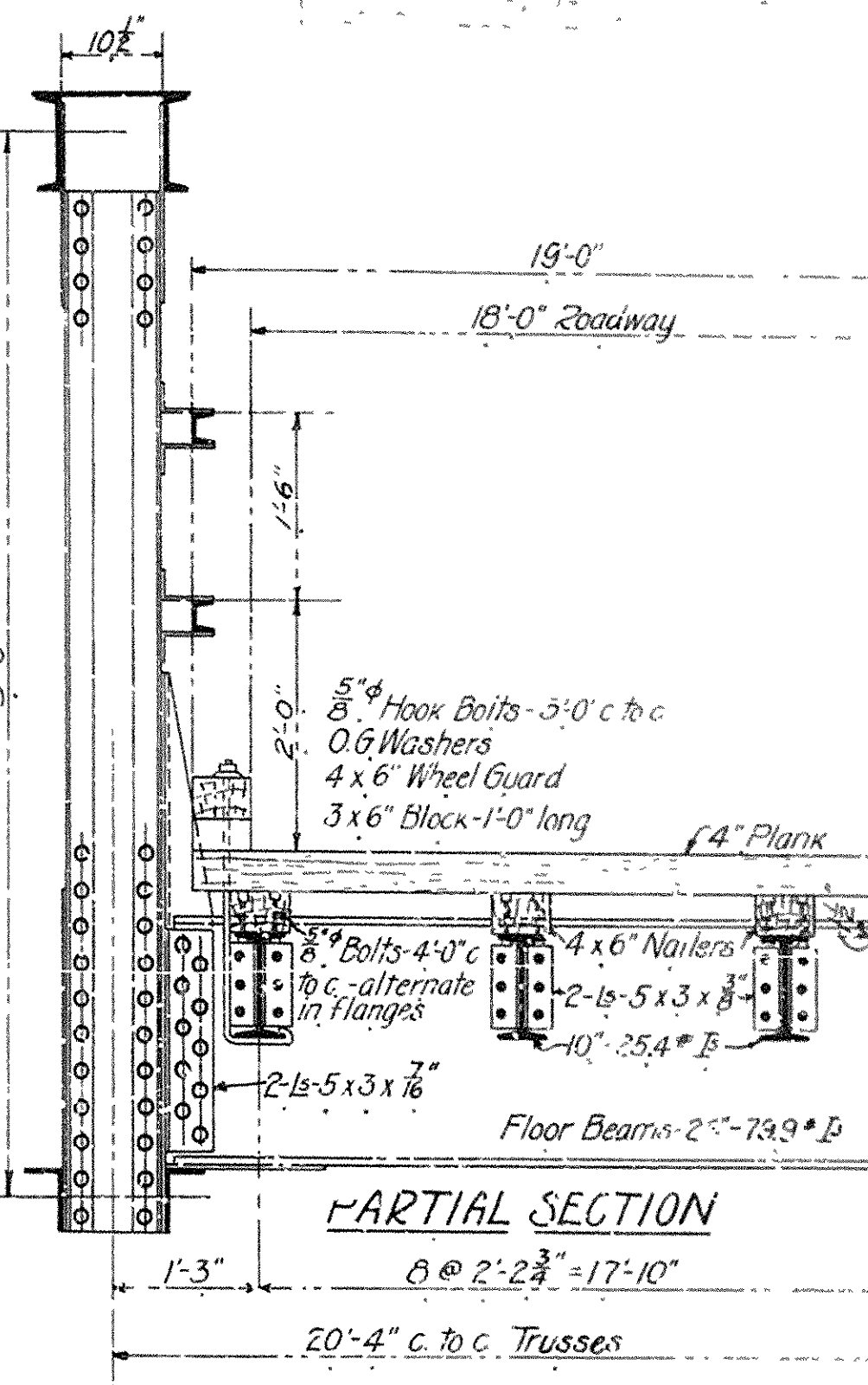
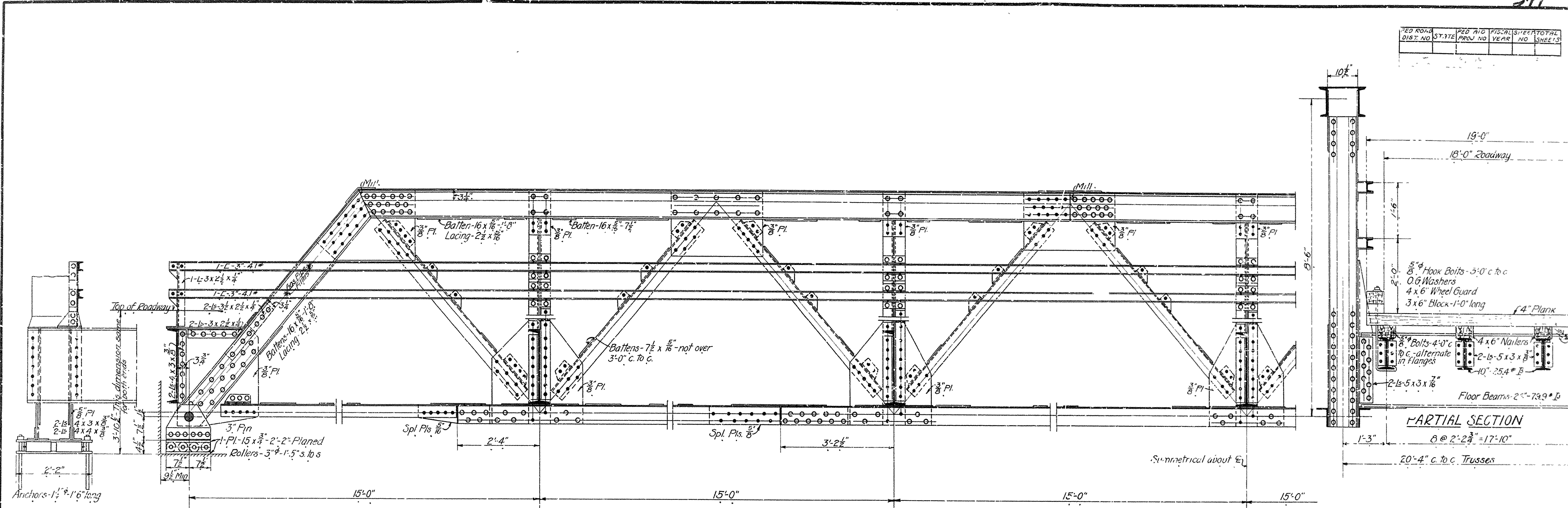
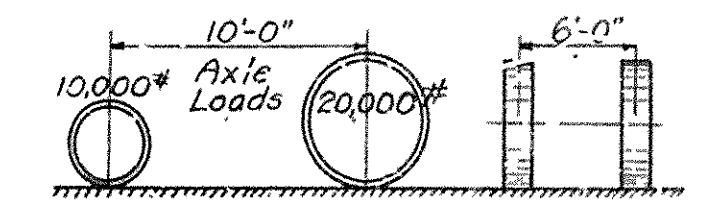


ROAD DIST. NO.	STATE	DES. AND PROJ. NO.	FISCAL YEAR	SHEET NO.	TOTAL SHEETS



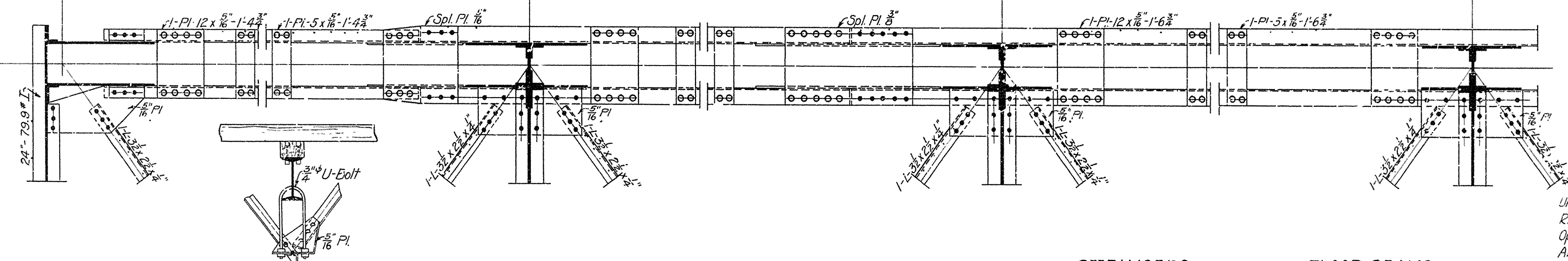
**SPECIFICATIONS**

Live Load: Uniform, - 80 lbs per square foot of roadway  
 Concentrated: Two 15-Ton Trucks as shown below



Impact - 30% of live load.  
 Unit Stresses - See Arkansas Highway Dept Specifications  
 Rivets - 3/4" diam.  
 Open Holes - 1/8" diam.  
 All field connections riveted. Rivet holes in tension members are to be so spaced that not more than one hole is deducted from area of cross-section of each angle at point of maximum stress.  
 Shop Paint - One coat red lead and boiled linseed oil  
 Field Paint - Two coats of different colors as approved by the eng'r.  
 Batten plates spaced not over 3'-0" c. to c.  
 Estimated weight of steel = 62,570#. Lumber = 9,100 Ft<sup>3</sup> BM

DETAIL OF SUPPORT FOR LATERALS

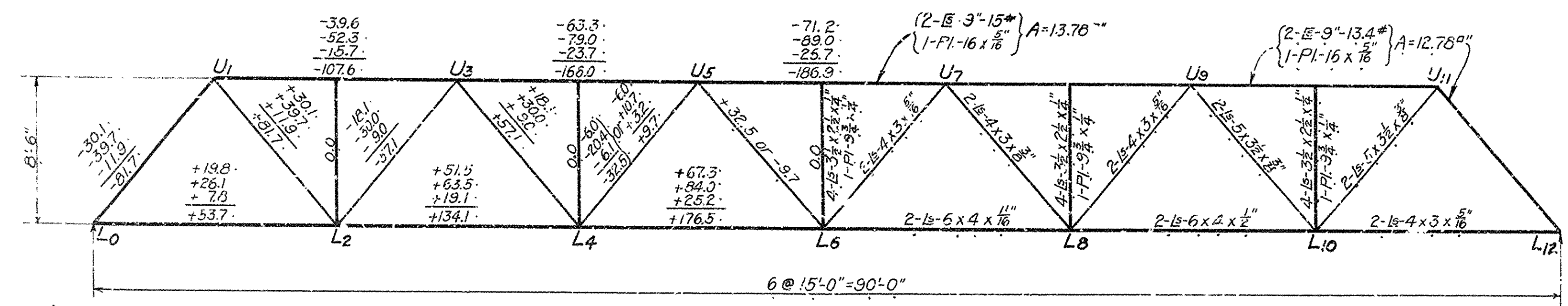


**STRINGERS**

D.L.M. =  $\frac{3}{8} \times 73 \times 15^2 = 2,050\#$   
 L.L.M. =  $\frac{1}{4} \times 5600 \times 15 = 21,000$   
 Impact 30% = 6,300  
 Total = 29,350#  
 $\frac{29,350 \times 12}{16,000} = 22.0 = \text{Sec. Mod. Req'd.}$   
 Use 10" - 25.4# I<sub>33</sub> - Sec. Mod. = 24.4

**FLOOR BEAMS**

D.L.M. =  $\frac{3}{8} \times 574 \times 20.33^2 = 29,600\#$   
 L.L.M. =  $8.67 \times 23,333 - 6 \times 11,667 = 152,000$   
 Impact 30% = 45,600  
 Total = 227,200#  
 $\frac{227,200 \times 12}{15,000} = 170.5 = \text{Sec. Mod. Req'd.}$   
 Use 24" - 79.9# I<sub>33</sub> - Sec. Mod. = 173.9



NOTE: - This drawing is general only. Shop drawings must be made in compliance with specifications and must be submitted and approved before fabrication begins.

**STANDARD PLAN**

90-FT. STEEL HIGHWAY BRIDGE  
 18' ROADWAY  
 ARKANSAS HIGHWAY DEPARTMENT  
 LITTLE ROCK, ARK.

Approved: \_\_\_\_\_  
 Commissioner State Lands, Highways & Improvements  
 By: \_\_\_\_\_  
 State Highway Engineer  
 Oct. 1922

DESIGNED	N. B. G.
TRACED	E. H. E.
CHECKED	
REVISIONS	