

STATE OF ARKANSAS
STATE HIGHWAY DEPARTMENT

YEAR	JOB NO.	SHEET NO.	TOTAL SHEETS
1928	566	24	24

DIST.	AD.	SECTION	POST MILE
3	248A	1	10

PLAN OF PROPOSED BRIDGES
ON
EVENING SHADE-ASH FLAT ROAD
SHARP COUNTY

INDEX OF SHEETS

SHEET NO.	DRAW. NO.	TITLE
828		Title Sheet
829		Layout Br. No. 798
830		Details of Arch Span Br. No. 798
831		Approach Spans Br. No. 798
832		" " " " " " 798
833		Layout Br. No. 916
834		Details of Substructure Br. No. 916
835		" " " " " " " "
836		Layout Br. No. 799
837		Details of 90' Arch Br. No. 799
838		" " " " " " " "
839		Approach Spans Br. No. 799
840		Layout Br. No. 800
841		Details of Piers and Bents, Br. No. 800
842		Abutment No. 1
843		" " " " " " " "
844		Handrail
179		Details of Standard 35' R.C.D. Span
183		" " " " " " " "
186		" " " " " " " "
21 to 23		Profile Sheets
24		Typical 26' Cross-section Sheet

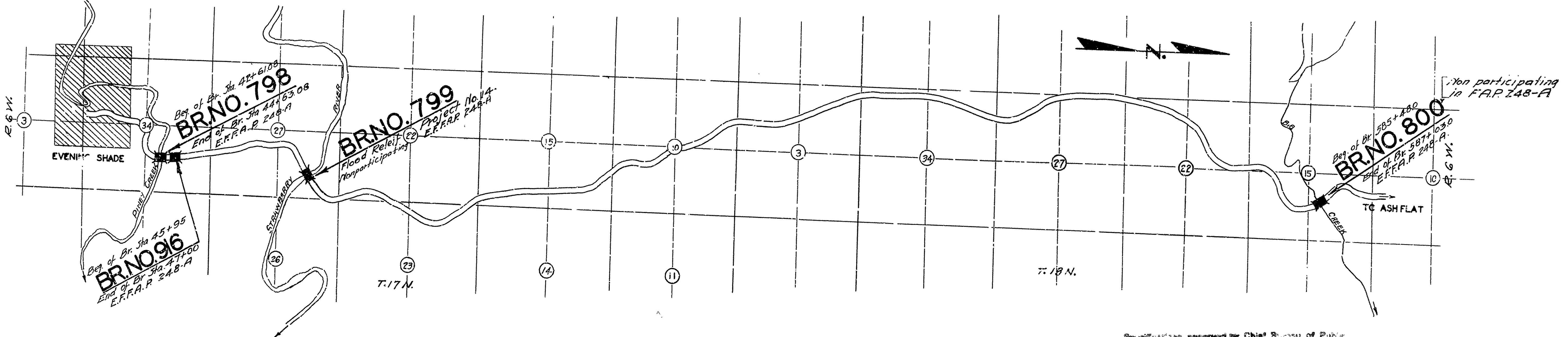
ROUTE 11 SEC. 16
JOB No 566
FEDERAL AID PROJECT No.
EMERGENCY FINANCIAL
F.A.P. No. 248-A.

QUANTITIES FOR F.A.P. 248-A

Item No.	Item	Amount
PARTICIPATING WORK		
13	Dry Excavation for Structures	438 Cu Yds
13	Wet " " " "	769 " "
13	Solid Rock " " " "	119 " "
17		
54	Class "A" Concrete	422.85 " "
54	Class "B" Concrete	111.15 " "
54	Class "C" Concrete	328.26 " "
55	Reinforcing Steel	115,589.0 #
69	Rip Rap 1' Thick	508.30 Sq Yds
74	Concrete Paving	53,770.44 Sq Yds
NONPARTICIPATING WORK		
12	Earth Excavation	147 Cu Yd
17	Borrow	4,490 " "

QUANTITIES Job No. 566

ITEM NO.	DESCRIPTION	AMOUNT
12	Solid Rock Excavation	355 Cu Yds
12	Loose " " " "	00 " "
12	Earth " " " "	147 " "
13	Dry Excavation for Structures	752 " "
13	Wet " " " "	1289 " "
13	Solid Rock Excav " " " "	283 " "
17	Borrow	9722 " "
54	Class "A" Concrete	942.77 " "
54	" " "B" " "	491.80 " "
54	" " "C" " "	873.22 " "
55	Reinforcing Steel	317,722 Lbs.
69	Rip Rap 1' Thick	31 C.O. Sq Yds.
74	Concrete Paving for Structures	16,590.23 Lin. Ft.



LAYOUT
Scale: 1"=2000'
Job No. 566
GROSS LENGTH OF PROJECT - 700 Ft. 0.133 Miles
NET LENGTH OF PROJECT - 700 Ft. 0.133 Miles
E.F.A.P. 248-A
Gross Length of Project 3070 Ft. 0.058 Miles
Net Length of Project 3070 Ft. 0.058 Miles

Special provisions approved by Chief Bureau of Public Roads on October 15, 1925, and adopted by the Commission on July 1, 1925, with amendments and Special Provisions as follows:

Revisions	Revised	Approved
Pamphlet A	Jan. 1, 1928	June 1, 1928
" B	" " " "	" " " "
" C	" " " "	" " " "
" D	July 1, 1925	Nov. 24, 1928
" E	" " " "	" " " "
" F	" " " "	" " " "
" G	" " " "	" " " "
" H	" " " "	" " " "
" I	" " " "	" " " "
" J	" " " "	" " " "
" K	" " " "	" " " "
" L	April 1, 1928	" " " "

No Special Provisions.

APPROVED
COMMISSIONER - STATE LANDS, HIGHWAYS AND IMPROVEMENTS

APPROVED
STATE HIGHWAY ENGINEER

RECOMMENDED FOR APPROVAL
DISTRICT ENGINEER - 3rd DISTRICT OF PUBLIC ROADS

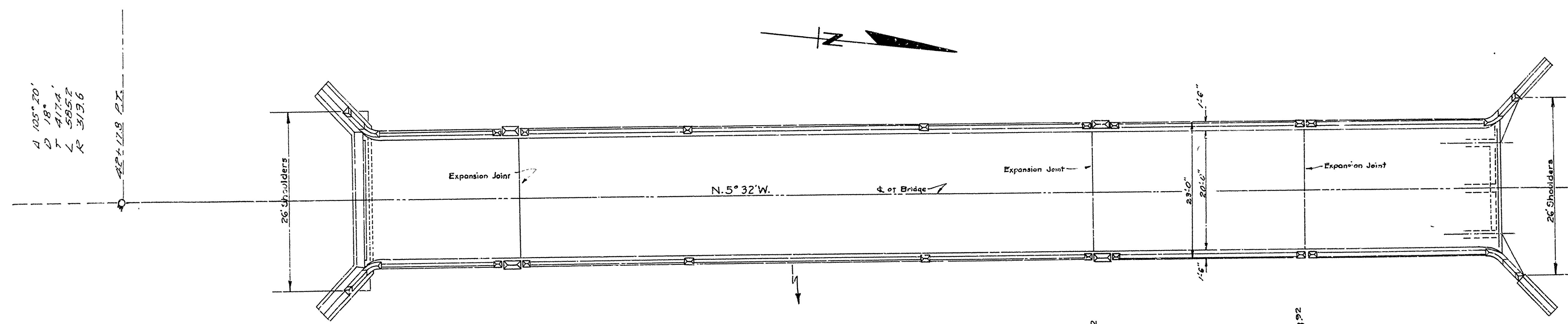
RECOMMENDED FOR APPROVAL
CHIEF ENGINEER - 1st BUREAU OF PUBLIC ROADS

APPROVED
DIRECTOR - 1st BUREAU OF PUBLIC ROADS

M.R. Banner
BRIDGE ENGINEER
BRIDGE No. 798-799
376-800 DRAWING No. 828

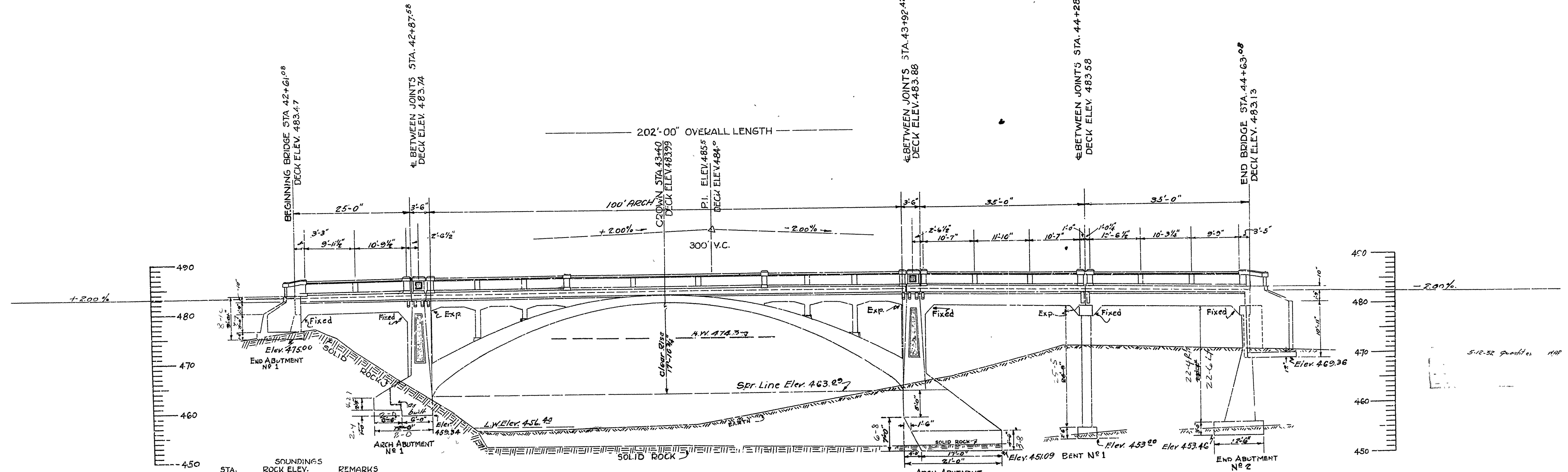
FILED	JOB N ^o	SHEET	TOTAL
1928	566	2	24
LIST OF BRIDGE PARTS			
NO.	DESCRIPTION	QTY.	UNIT
1	248A	2	10

RIGHT OF WAY				
From Sta.	To Sta.	Width ft.	Width ft.	Total Width
41+30	50+20	700	200	400



Participating Quantities

Item No. 13 Dry Excavation for Structures	230 cu.yds.
13 Wet " "	298 " "
13 Solid Rock " "	71 " "
13 Earth Excavation	147 " "
14 Borrow	4480 " "
54 Class "A" Concrete	225.92 " "
54 Class "B" " "	111.10 " "
54 Class "S" " "	264.49 " "
55 Reinforcing Steel	698.63 lbs.
74 Concrete Railing for Structures	4267 lin. ft.
69 Rip Rap 1" Thick	4256 sq. yds.
Nonparticipating Quantities	
12 Earth Excavation	147 cu.yd.
17 Borrow	4480 " "
1626.02' Tangent from end of Bridge.	



STA.	SOUNDINGS	REMARKS
42+50	474.7	BROKEN LEDGE
+65	476.5	
+70	475.0	
+73	472.3	
+80	468.4	
+95	459.2	
43+45	452.5	LIMESTONE STRATA
+75	451.9	
44+00	452.0	

PINEY CREEK (MAIN CHANNEL)
 D.A. 80 SW. MI. Hilly - Length to Width 3 to 1.
 FOR DETAILS SEE SHEETS NO. 831, 832, 179, 183

LAYOUT OF BRIDGE OVER PINEY CREEK
 1 MI. N. OF EVENING SHADE - SHARP CO.
 ROUTE 11 SEC. 16

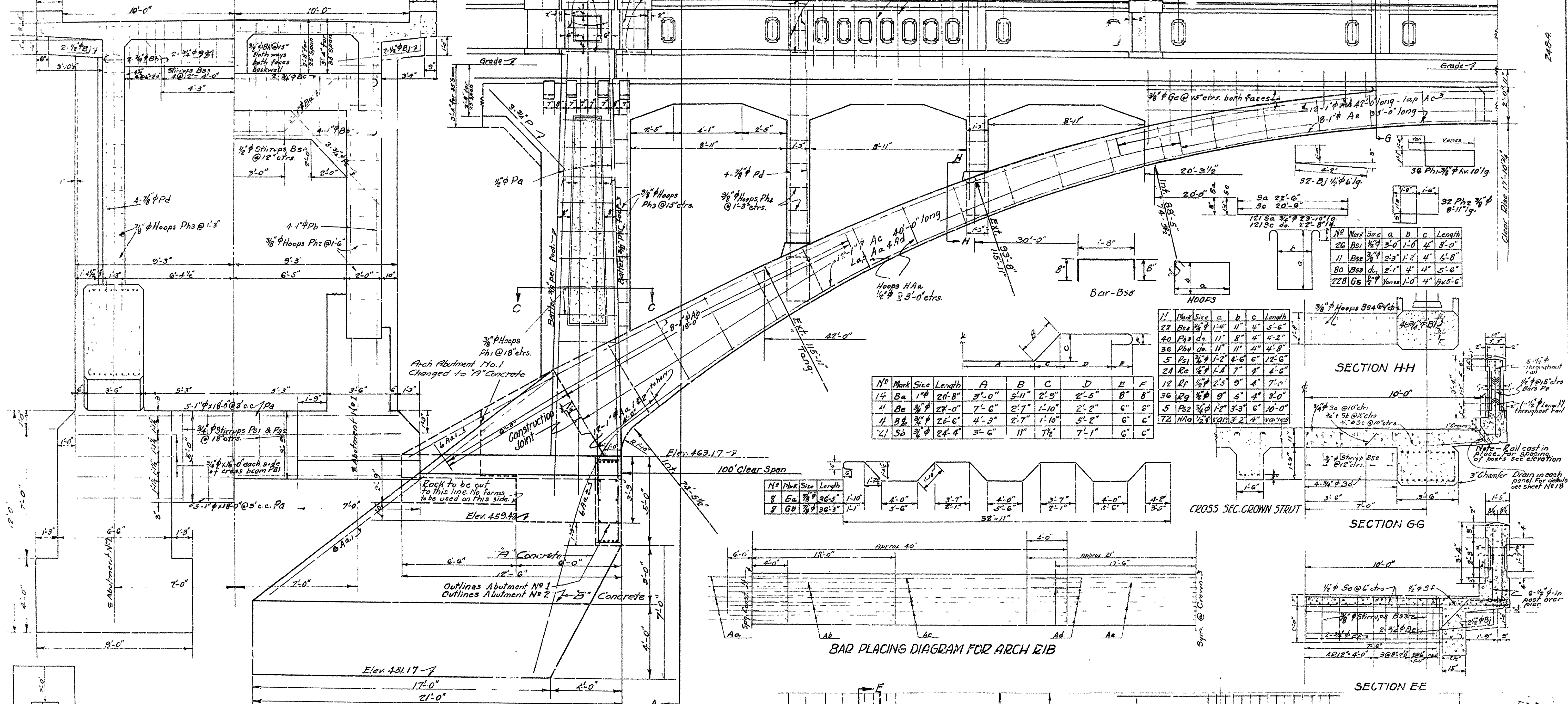
ARKANSAS STATE HIGHWAY DEPARTMENT
 LITTLE ROCK, ARK.

Drawn By: *GA* Date: *5-7-28* Scale: 1 in. = 10 ft.
 Traced By: *GA* Date: *5-7-28*
 Checked By: _____ Date: _____
 BRIDGE No. 798 DRAWING No. 829

M.B. Evans
 BRIDGE ENGINEER

HALF SECTION A-A
 ABUTMENT NO. 2

HALF REAR ELEVATION
 ABUTMENT NO. 1



N ^o	Mark	Size	Length	A	B	C	D	E	F
14	Ba	1 1/2"	20'-8"	3'-0"	3'-11"	2'-9"	2'-5"	8'	8'
4	Be	3/4"	27'-0"	7'-6"	2'-7"	1'-10"	2'-2"	6'	6'
4	Bc	3/4"	25'-6"	4'-3"	2'-7"	1'-10"	5'-2"	6'	6'
21	Sb	3/4"	24'-4"	3'-6"	11'	7'-1"	7'-1"	6'	6'

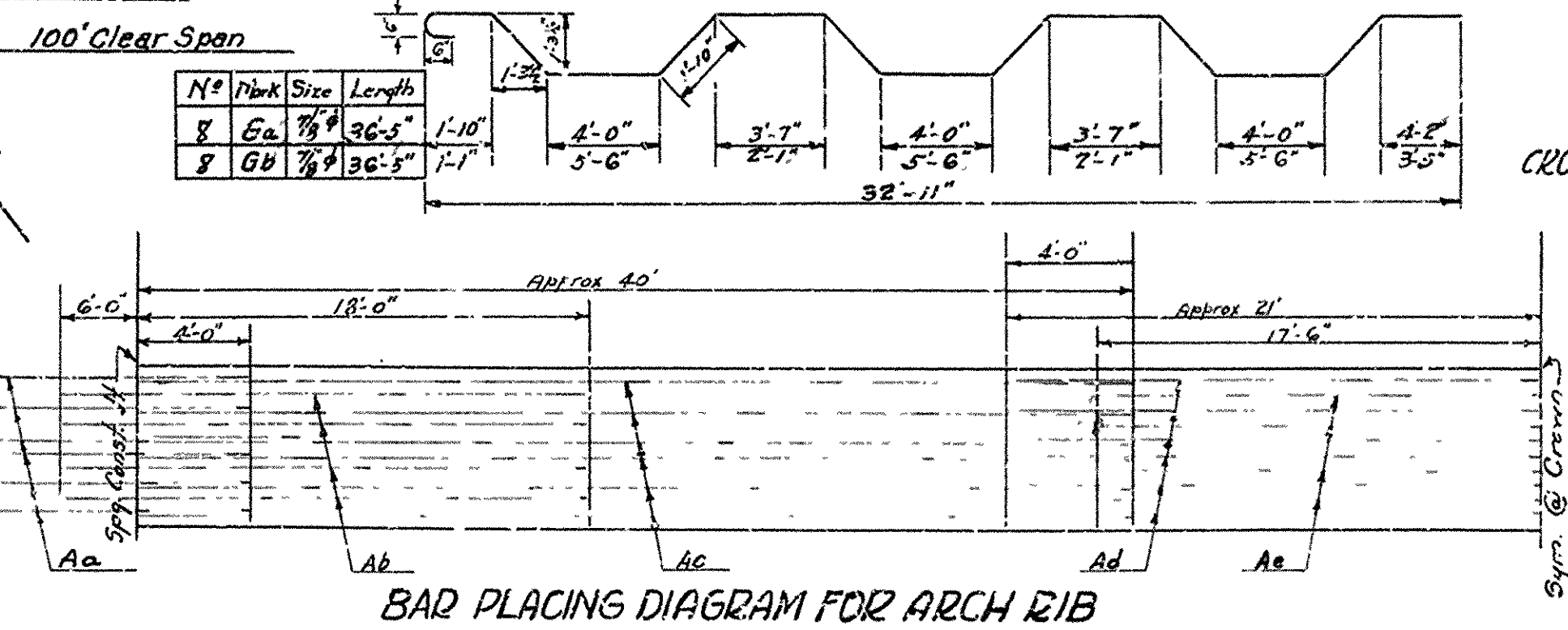
N ^o	Mark	Size	a	b	c	Length
26	Bs1	1/2"	3'-0"	1'-0"	4'	5'-0"
11	Bs2	3/8"	2'-3"	1'-2"	4'	4'-8"
80	Bs3	3/8"	2'-1"	4"	4'	5'-6"
228	G5	1/2"	1'-0"	4'	4'	4'-5"

SECTION HH

CROSS SEC. CROWN STRUT

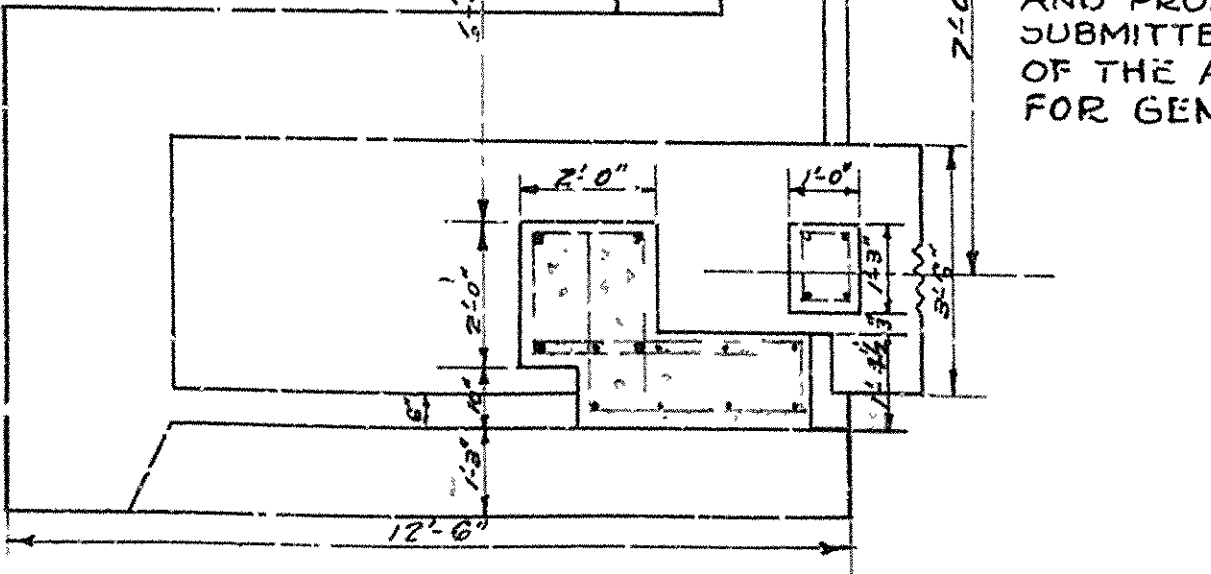
SECTION GG

SECTION EE

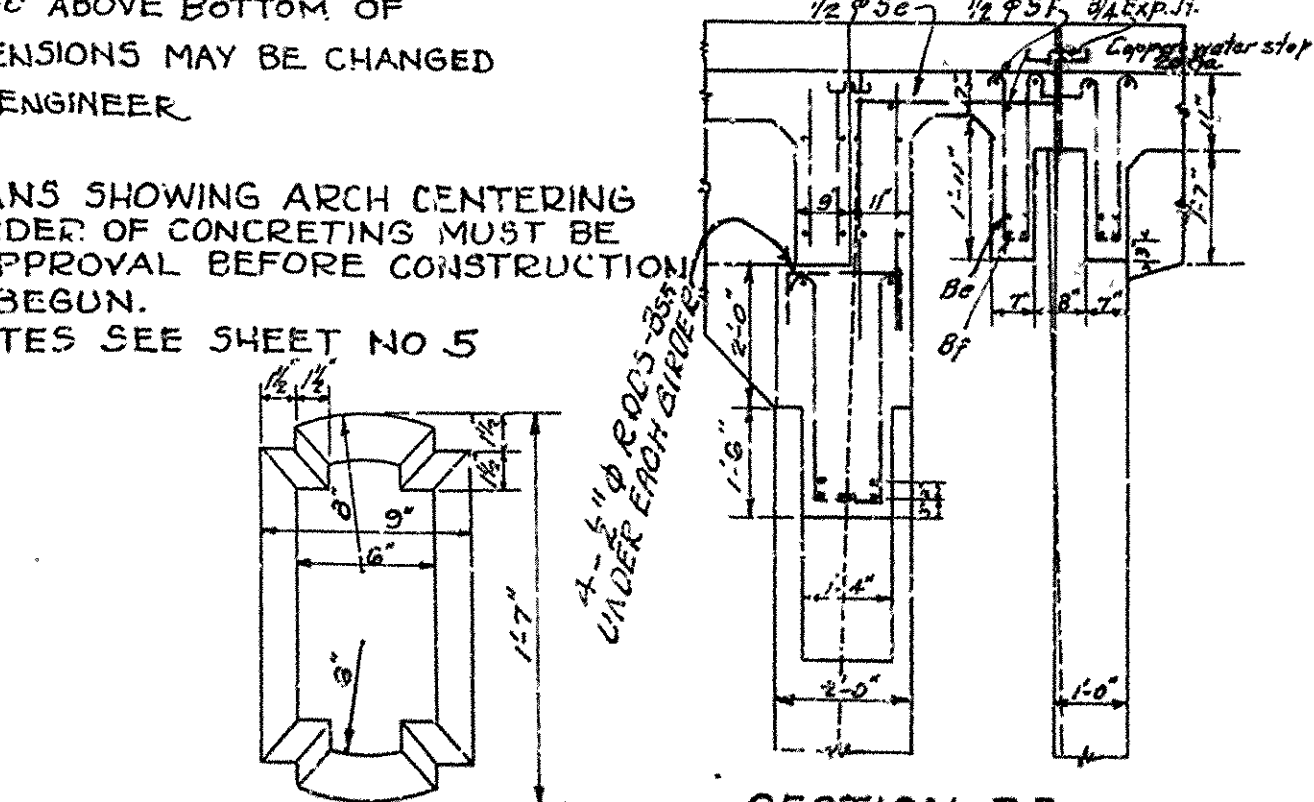


BAR PLACING DIAGRAM FOR ARCH IIB

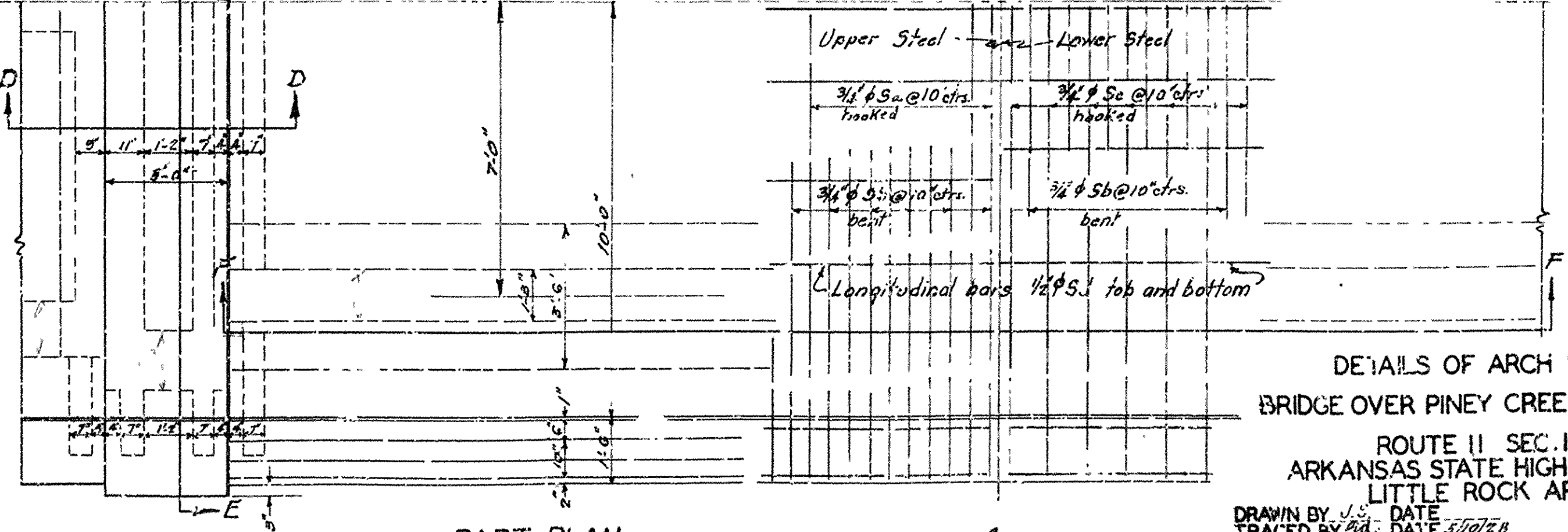
PLAN OF ARCH KEYWAY



SECTION C-C & HALF PLAN OF ABUTMENT NO. 1



DETAIL OF HANDRAIL OPENING SECTION DD



DETAILS OF ARCH SPAN
 BRIDGE OVER PINEY CREEK, SHARP CO.
 ROUTE 11 SEC. 16
 ARKANSAS STATE HIGHWAY DEPT.
 LITTLE ROCK, ARK.

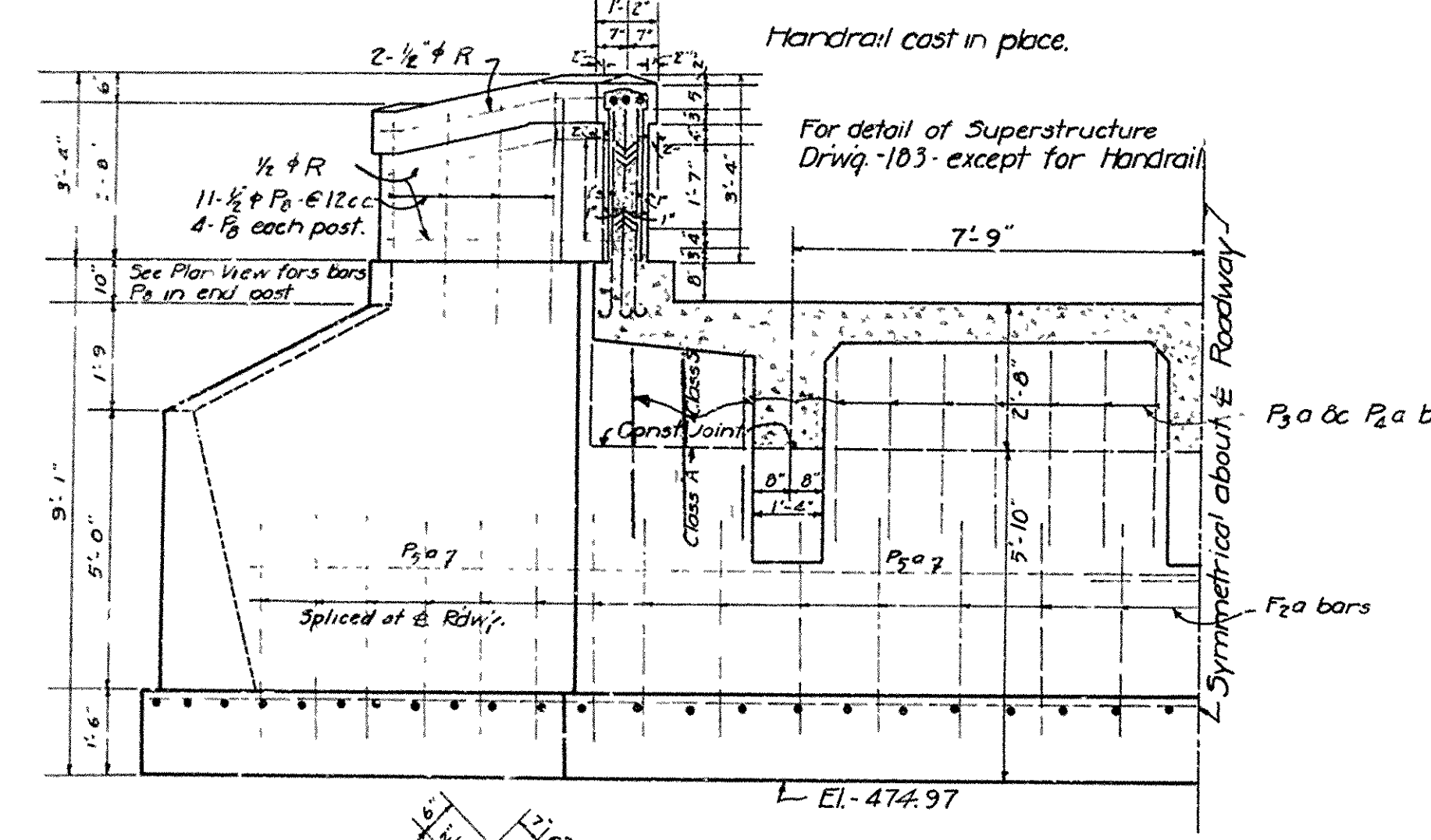
NOTE - IF SOLID ROCK IS ENCOUNTERED AT A LEVEL MORE THAN 1'-0" ABOVE BOTTOM OF ABUTMENT NO. 1, DIMENSIONS MAY BE CHANGED AS ADVISED BY THE ENGINEER.

NOTE - DETAIL PLANS SHOWING ARCH CENTERING AND PROPOSED ORDER OF CONCRETING MUST BE SUBMITTED FOR APPROVAL BEFORE CONSTRUCTION OF THE ARCH IS BEGUN. FOR GENERAL NOTES SEE SHEET NO 5

PART PLAN
 (SEC. F-F SEE SHEET NO 5)

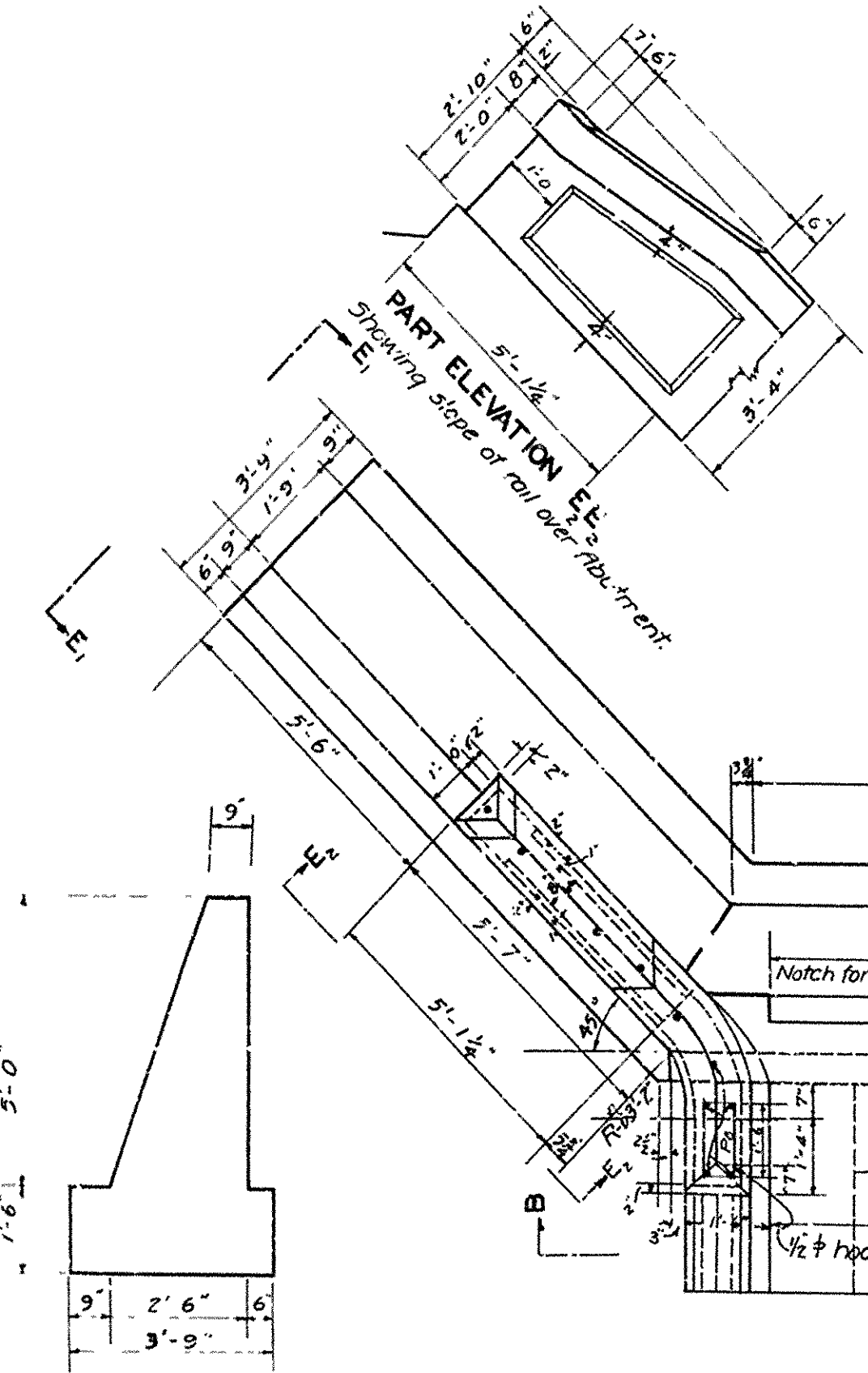
J.B. Lawrence
 BRIDGE ENGINEER

DRAWN BY: JLB DATE: 5/10/23
 CHECKED BY: JLB DATE: 5/10/23
 BRIDGE NO. 798 DRAWING NO. 830



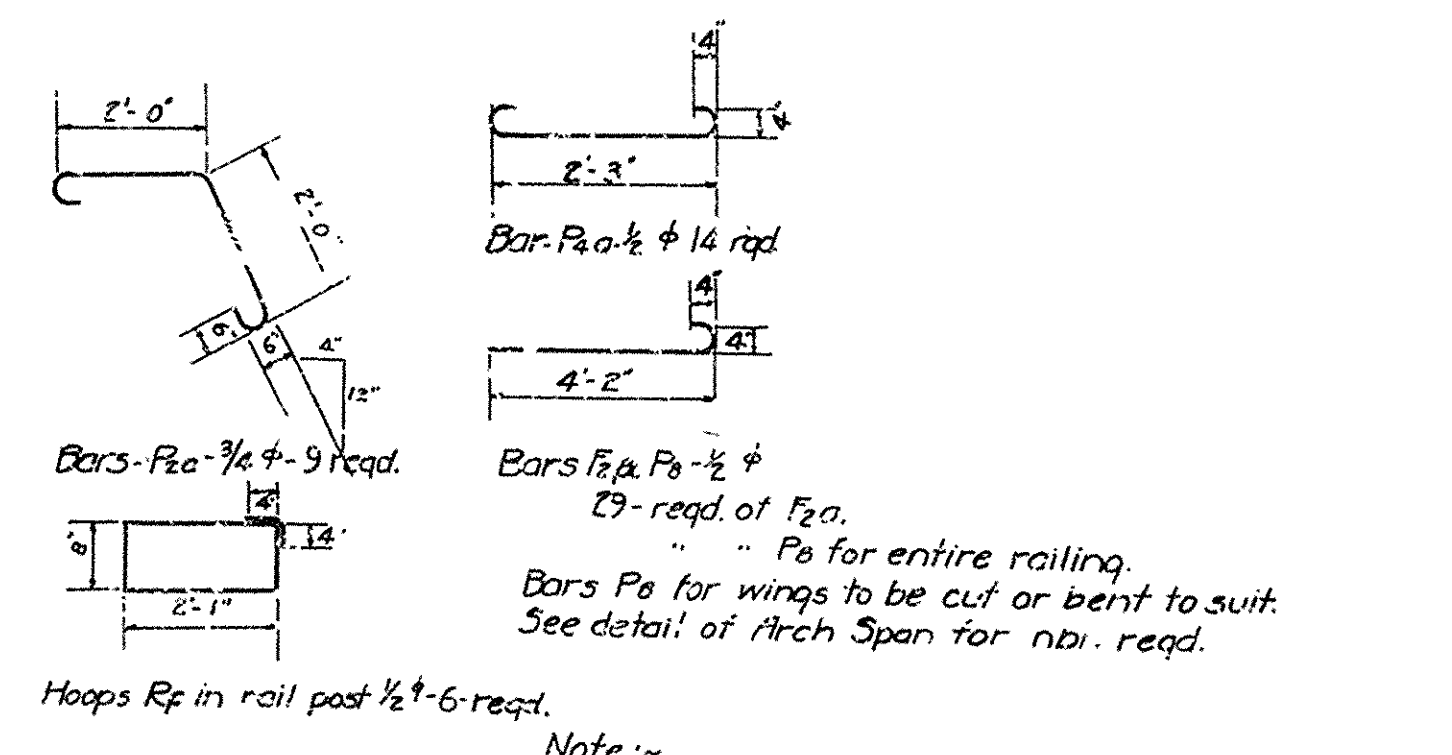
P3a & P2a bars
P2a bars

L-El-474.97

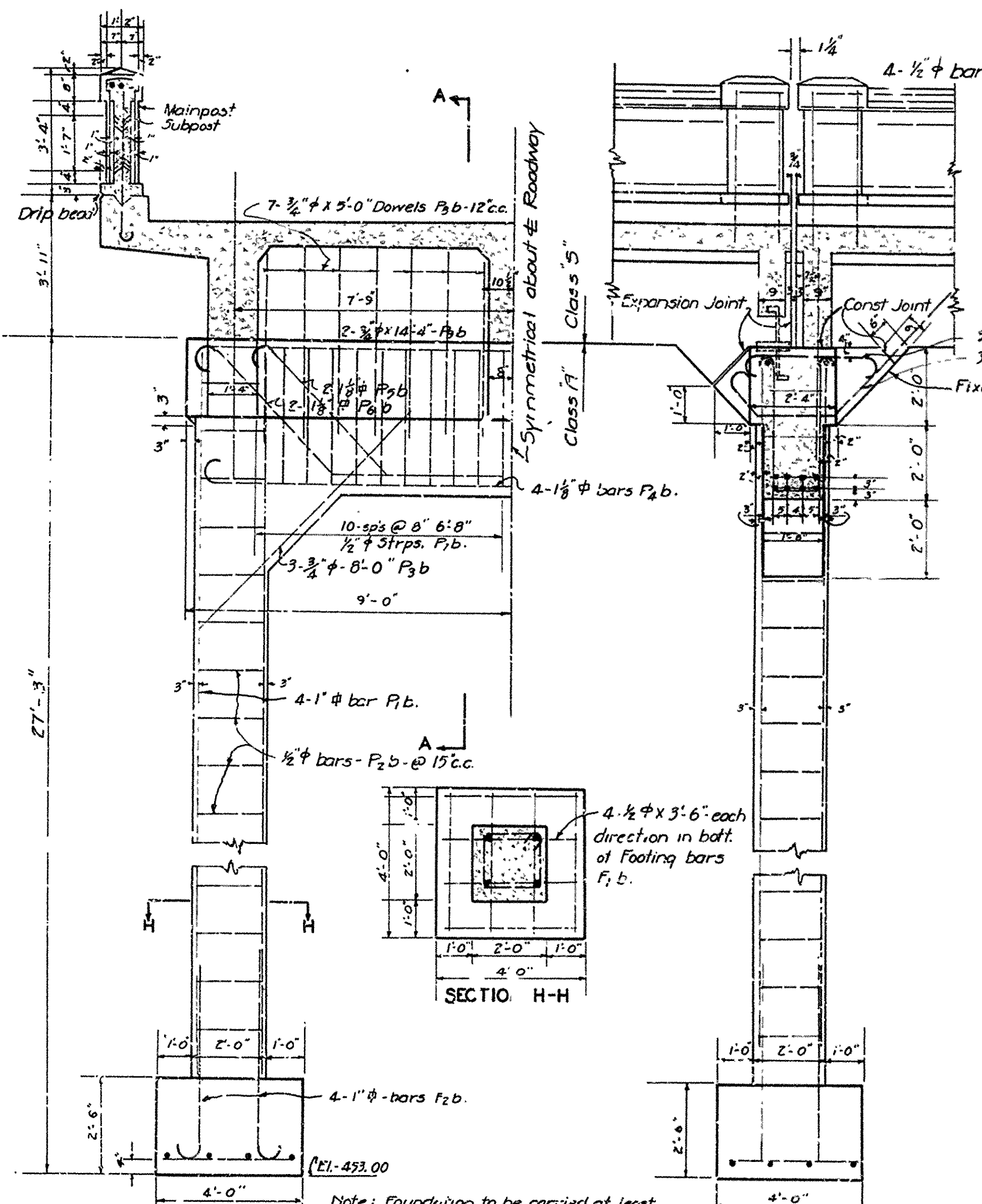


HALF PLAN

ABUTMENT NO. 1

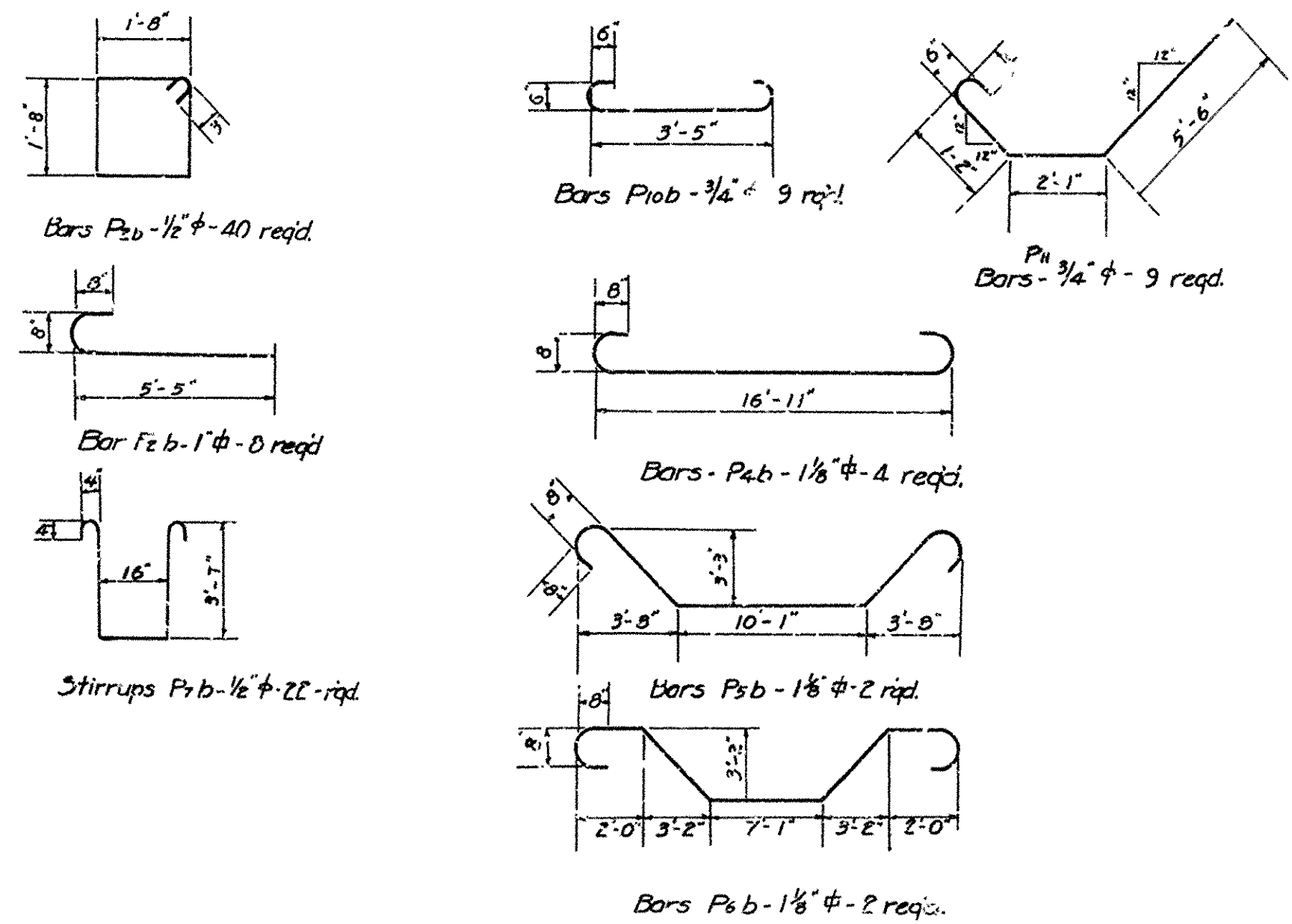


SECTION A-A



HALF ELEVATION

SECTION A-A



BENT NO. 1

Project No.	107-166	Sheet No.	24	Total Sheets	24
Date	1926	Drawn By			
Checked By					
Appr. By					
By	APR	DATE	1926	NO.	4
RD. DIST.	248A	SECTION			
BY		DATE			

For detail of Superstructure and expansion plates See Dwg No. 179, Type B.

General Notes.

All exposed corners to have 1/4" Chamfer unless otherwise noted.
Reinforcing Steel to be deformed bars of Structural or Intermediate Grade.
Shoplist and Bending Diagrams of Reinforcing Steel must be submitted by Contractor before Fabrication is begun.
Roadway Drains and Expansion Devices to be paid for at unit price bid for Reinforcing Steel.
Specifications: Arkansas Standard Road & Bridge Specifications adopted May 30th 1925.
All concrete to be poured in the dry.
All concrete above top of Column Caps, except Handrail, to be Class 5.
All concrete below top of Column Caps to be Class A concrete, except Arch Spans, which is to be Class B concrete. Arch Spans, like Slabs, Handrail Paired in place: Class D Concrete, 1:2:3 Mix, max. agg. 1/4" inch.

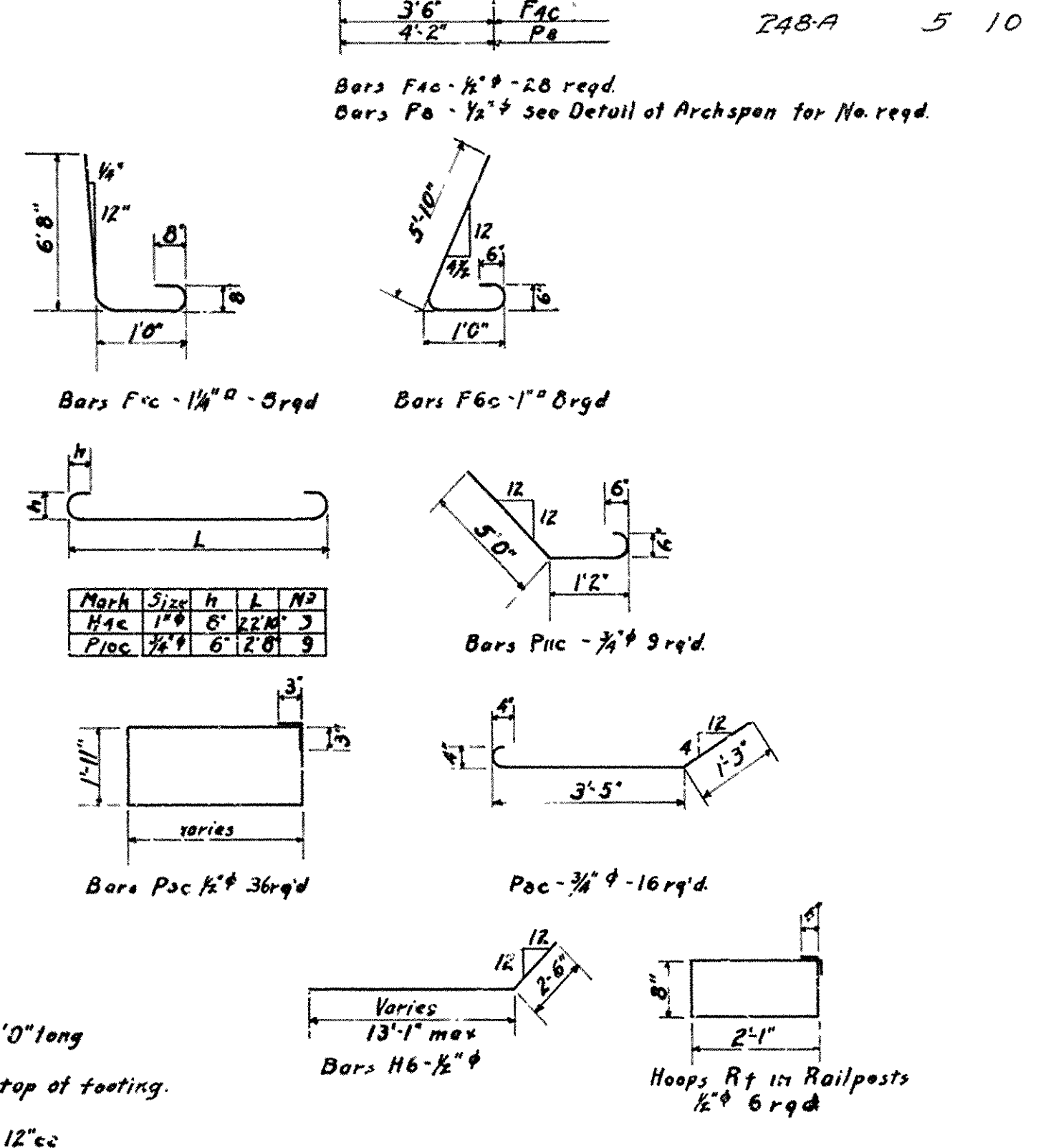
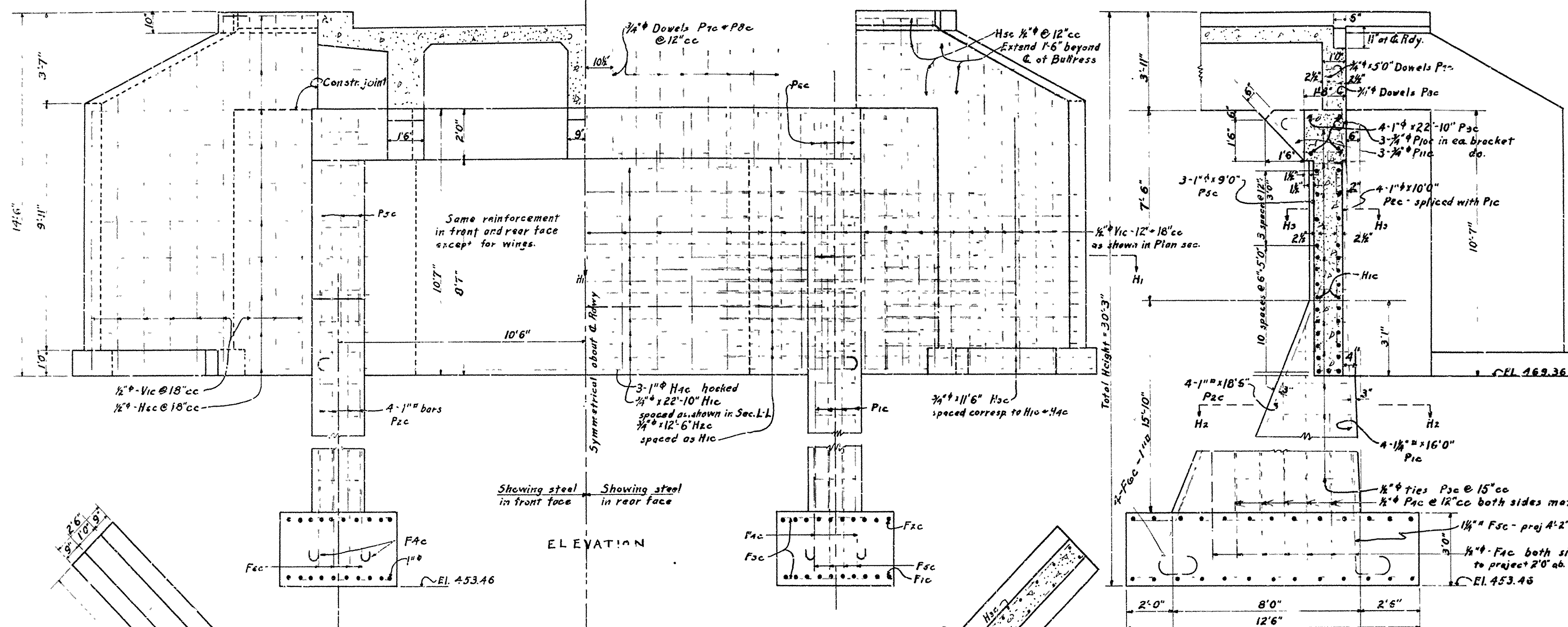
DETAILS OF ABUTMENT NO. 1 AND BENT NO. 1 BRIDGE OVER PINEY CREEK, SHARP COUNTY, ROUTE 11 SEC. 16 ARKANSAS STATE HIGHWAY DEPT. LITTLE ROCK, ARK.

DRAWN BY J.S. DATE 4/26/28
TRACED BY F.C.M.G. DATE 5/5/28
CHECKED BY..... DATE.....

BRIDGE ENGINEER

TOTAL SHEETS	24
SHEET NO.	5
JOB NO.	566
YEAR	1928

For detail of Superstructure see Dwg. No 179 except for Handrail.



GENERAL NOTES

All exposed corners to have $\frac{3}{8}$ " Chamfer unless otherwise noted.

Reinforcing Steel to be deformed bars of Structural or Intermediate Grade.

Shop List and Bending Diagrams of Reinforcing Steel must be submitted by Contractor before fabrication is begun.

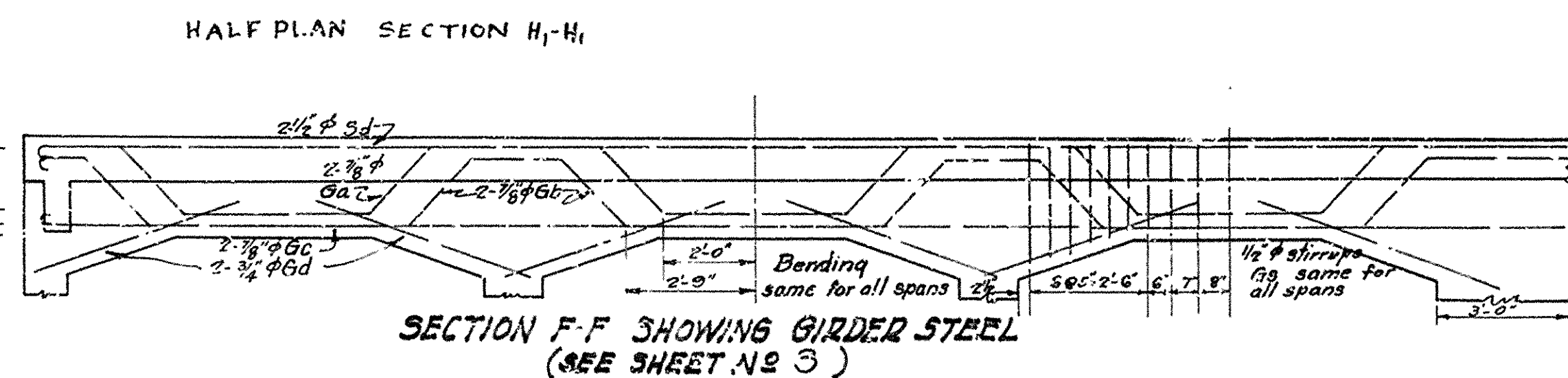
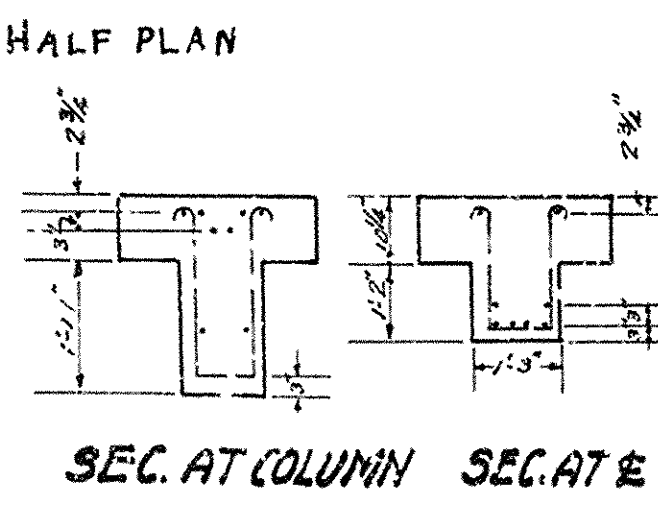
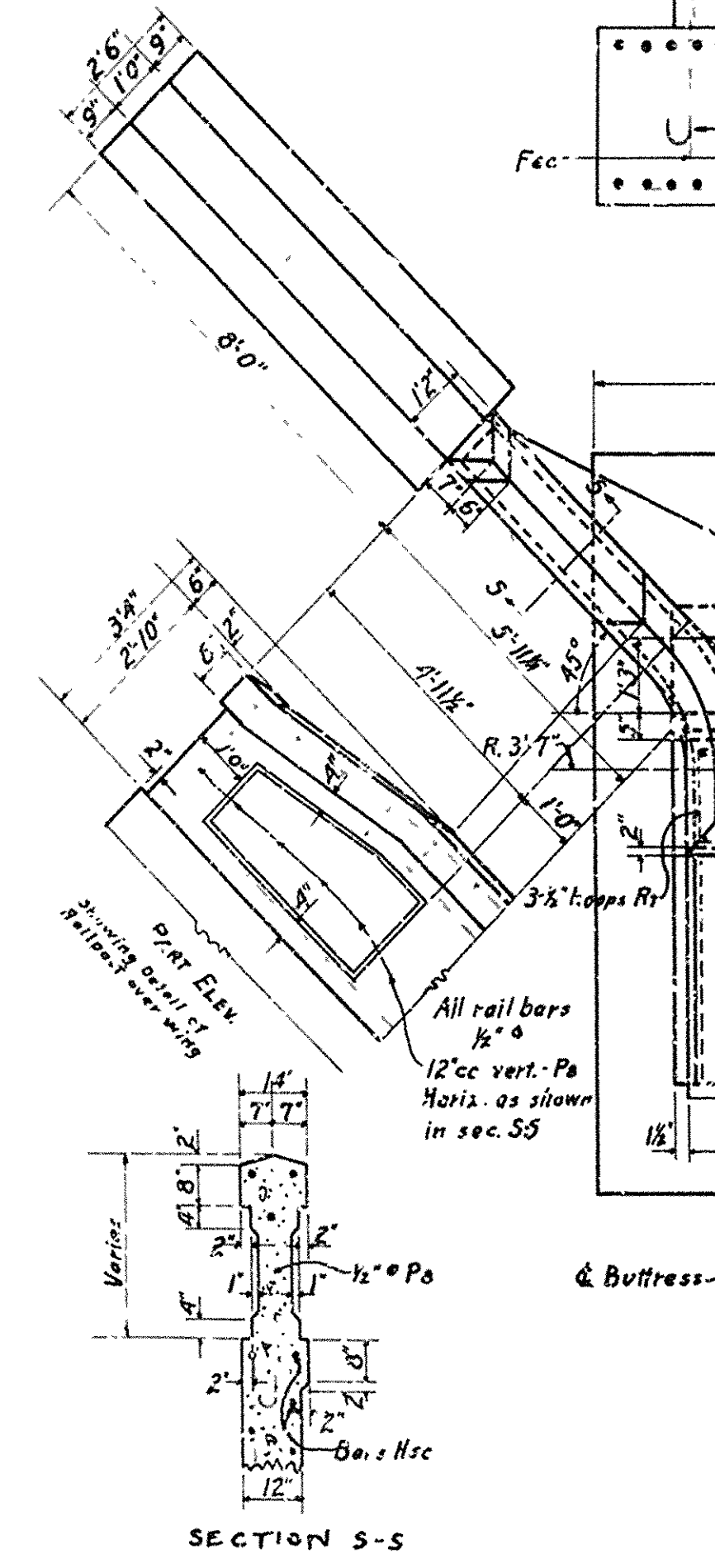
Roadway Drains & Expansion Devices to be paid for as Reinforcing Steel.

Specifications: Arkansas Standard Road & Bridge Specifications adopted May 30th 1925.

All concrete to be poured in the dry.

All concrete above top of Column Caps, except Handrail to be class "5".

All concrete below top of Column Caps to be Class "A" Handrail Poured in place: Class "D" Concrete, 1:2:3 Mix. max. agg. $\frac{1}{2}$ " inch.



DETAILS

ABUTMENT NO. 2

BRIDGE OVER PINEY CREEK

SHARP CO.

ROUTE II SEC. 16

ARKANSAS STATE HIGHWAY DEPARTMENT

LITTLE ROCK, ARK.

DRAWN BY DATE
 TRACED BY DATE
 CHECKED BY DATE
 BRIDGE NO. 798

SCALE 3/8 IN. = 1 FT.
 DRAWING NO. 832

M.B. Gower
 BRIDGE ENGINEER