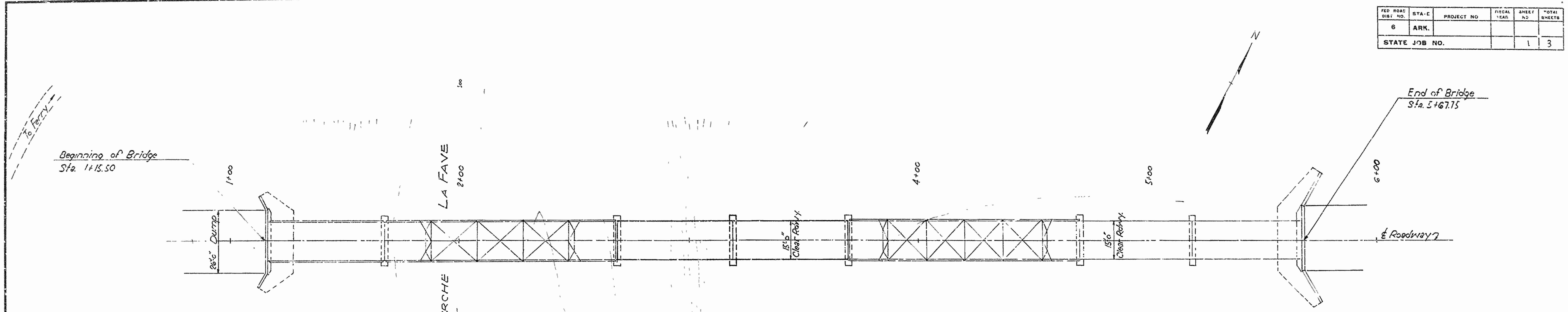


FED. ROAD DIST. NO.	STA. C.	PROJECT NO.	FISCAL YEAR	SHEET NO.	TOTAL SHEETS
6	ARK.			1	3
STATE JOB NO.					

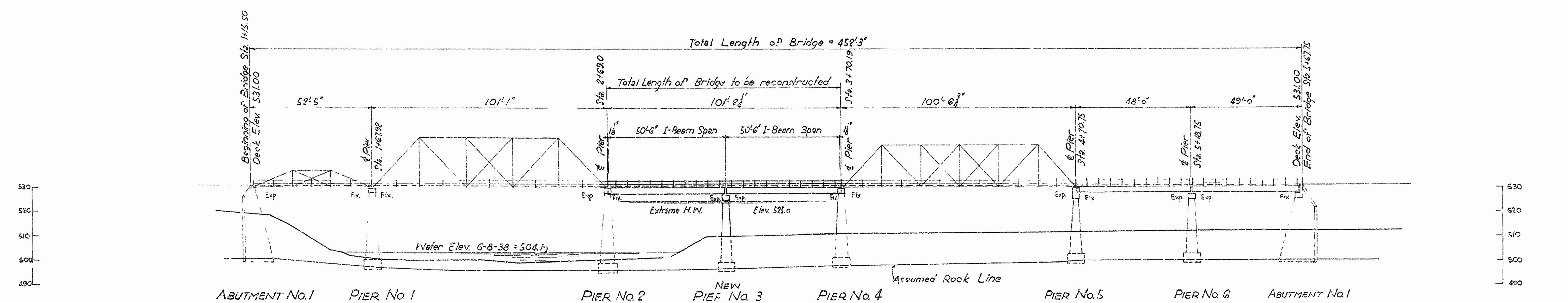
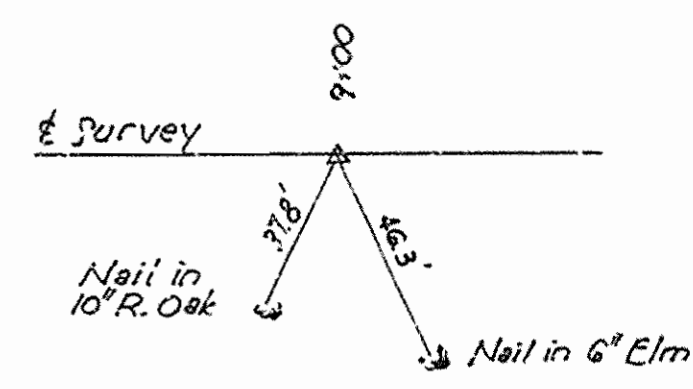
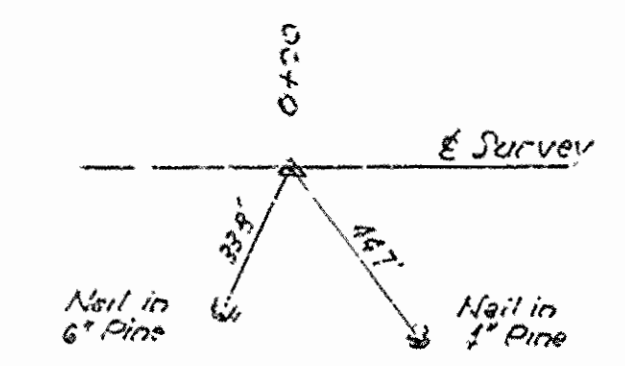


QUANTITIES

Item No.	Item	Quantity	Unit
103	Dry Excavation for Structures	65	Cu. Yd.
103	Wet Excavation for Structures	65	Cu. Yd.
103	Solid Rock Excavation for Structures	7	Cu. Yd.
802	Class A Concrete for Bridges	37	Cu. Yd.
802	Class B Concrete for Bridges	915	Cu. Yd.
803	Reinforcing Steel	600	Lb.
* 807	Structural Steel in Beam Spans	32,220	Lb.
809	Untreated Bridge Timber	10,810	M.F.B.M.
S.P.	Remodeling Present Piers (to Receive I-Beams)		Lump Sum Complete

* Includes all hardware, bolts, nails, washers, etc.

PLAN



ELEVATION

Drainage Area 360 Sq. Miles

B.M. Nail in side of 12" Gum
55' Rt. Sta. 1+35 Elev. 513.51

LAYOUT
BRIDGE OVER FOURCHE RIVER
 AT DEEP FORD
 SCOTT COUNTY
 ROUTE 28 SEC. 2

ARKANSAS STATE HIGHWAY COMMISSION
 LITTLE ROCK, ARK.

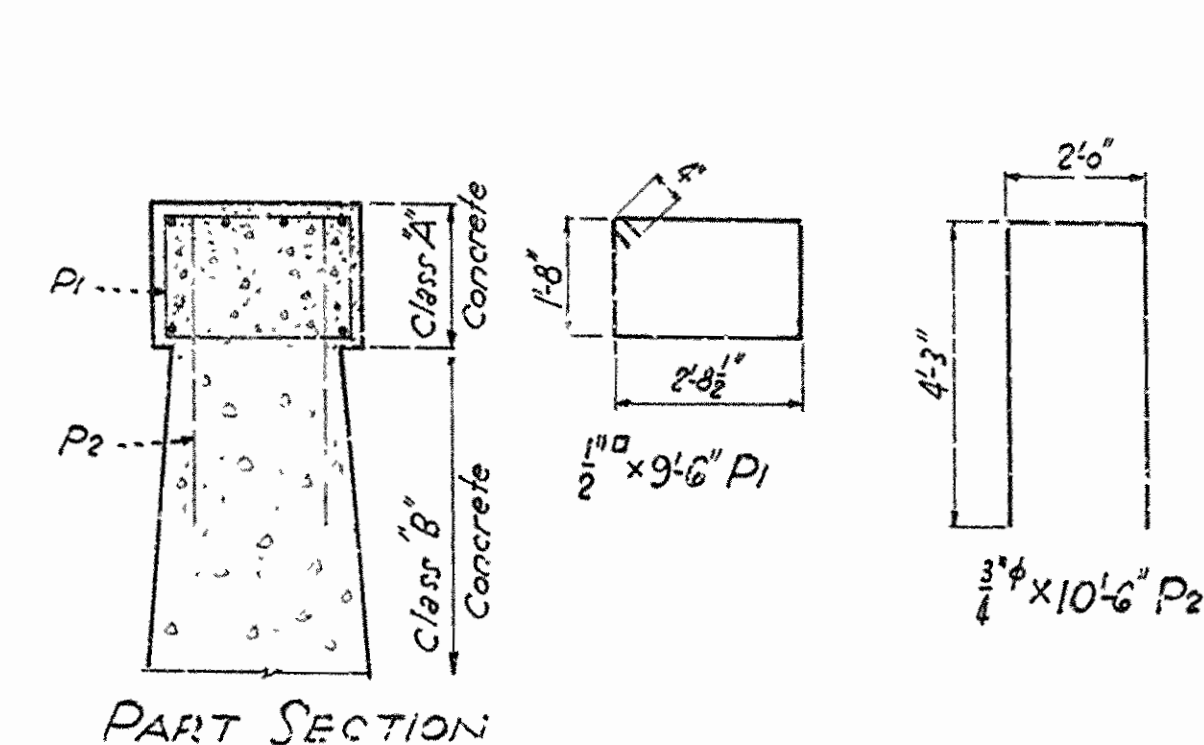
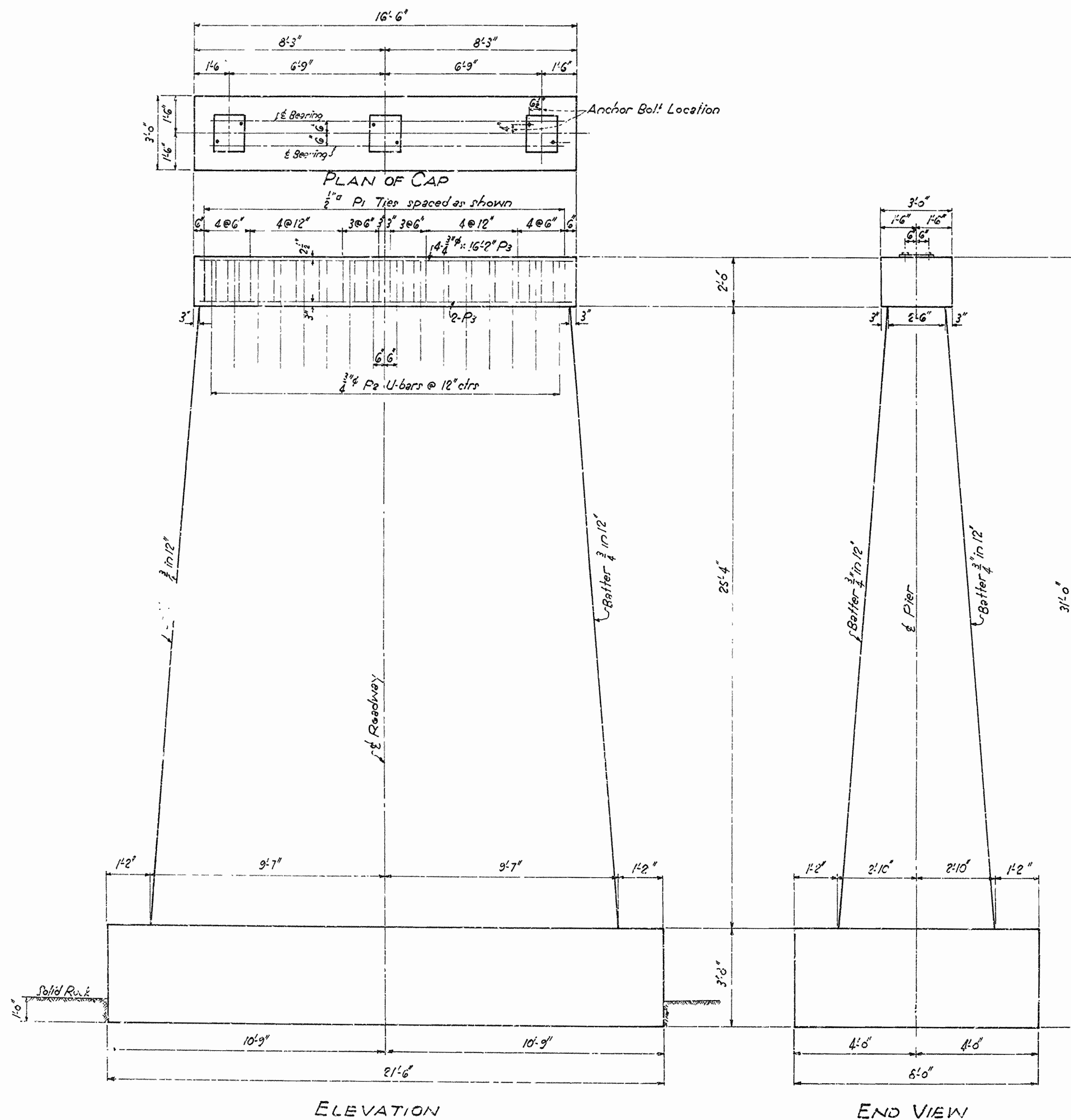
Drawn By: B.W.D. Date: 6-8-41
 Traced By: B.W.D. Date: 1-10-41
 Checked By: _____ Date: _____

Scale: 1 in. = 20 ft.

BRIDGE NO. 1594 DRAWING NO. 6131

H.C. Sawyer
 PRINCIPAL HIGHWAY ENGINEER (BRIDGE)

FED. ROAD DIST. NO.	STATE	PROJECT NO.	FISCAL YEAR	SHEET NO.	TOTAL SHEETS
6	ARK.			3	3
STATE JOB NO.					



GENERAL NOTES
 All concrete to be Class "B", except cap which shall be Class "A".
 All exposed corners to be chamfered 1" unless otherwise shown.
 All construction joints shall be horizontal and shall be provided with keys covering the middle third of the wall.
 Dimensions relating to reinforcing are to centers of bars.
 Reinforcing steel to be deformed bars of structural or intermediate grade.

**DETAIL OF NEW PIER
 TO CLOSE GAP IN BRIDGE
 OVER FOURCHE RIVER
 AT DEEP FORD
 SCOTT COUNTY
 ROUTE 28 SEC.**

ARKANSAS STATE HIGHWAY COMMISSION
 LITTLE ROCK, ARK.

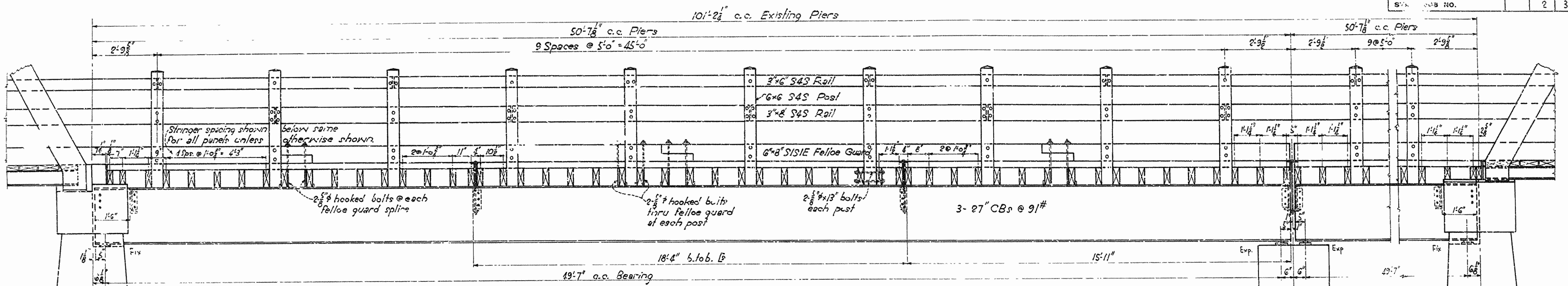
Drawn By: B.W.D. Date: 2-27-41
 Traced By: B.W.D. Date: 2-27-41
 Checked By: _____ Date: _____

Scale: _____ in. = _____ ft.

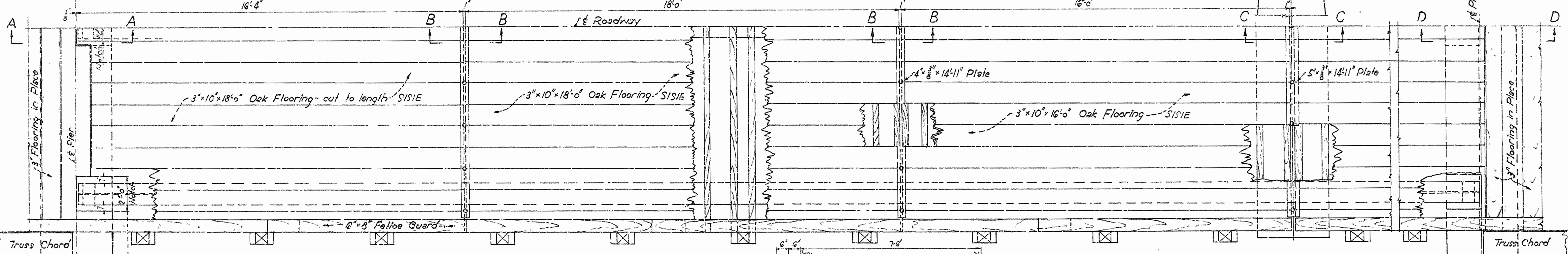
BRIDGE NO. 1594 DRAWING NO. 6133

H.B. Sawyer
 PRINCIPAL HIGHWAY ENGINEER (BRIDGE)

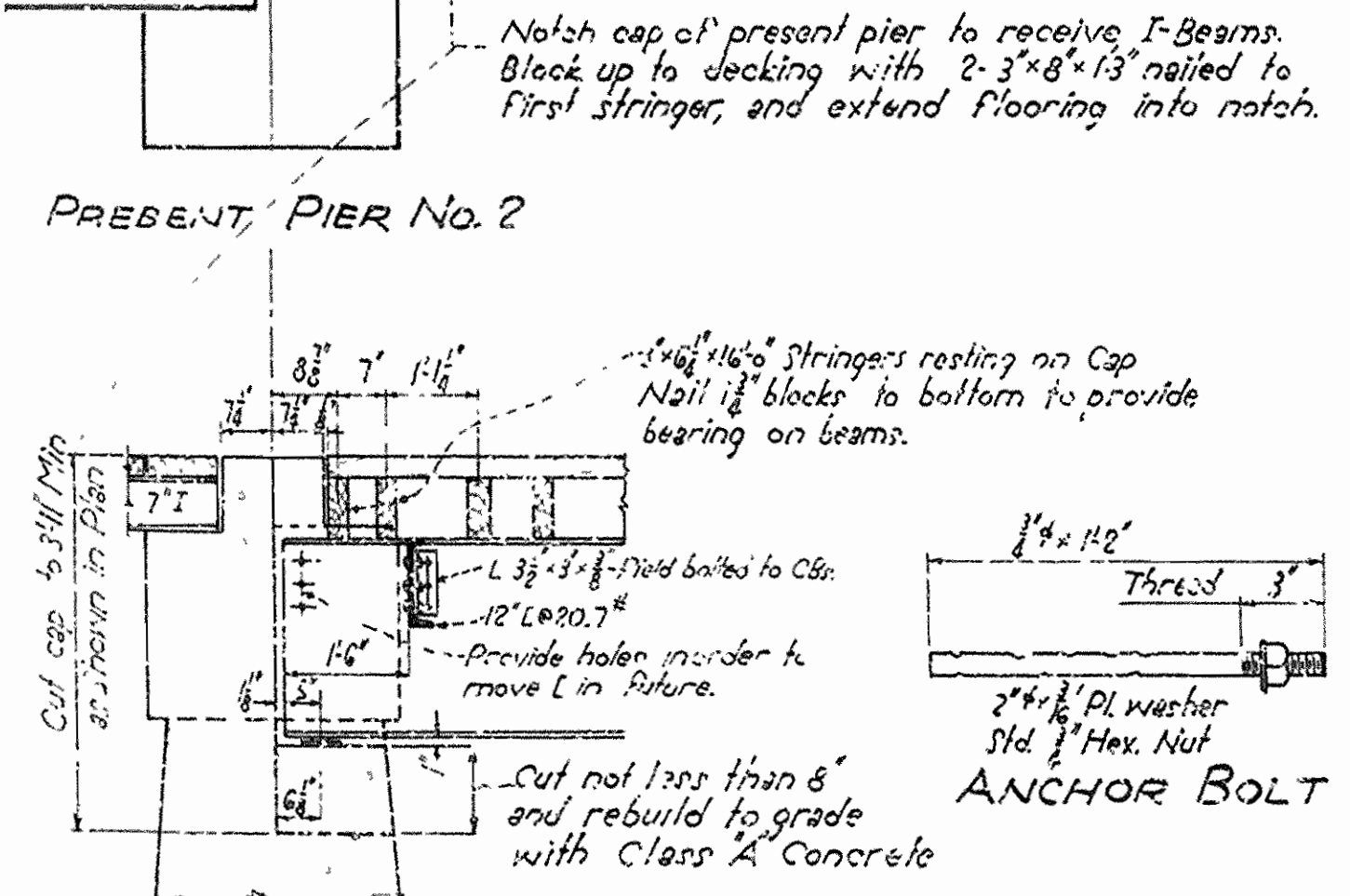
FE. ROAD DIST. NO.	STATE	PROJECT NO.	FISCAL YEAR	SHEET NO.	TOTAL SHEETS
6	ARK.			2	3
SHEET NO.					2



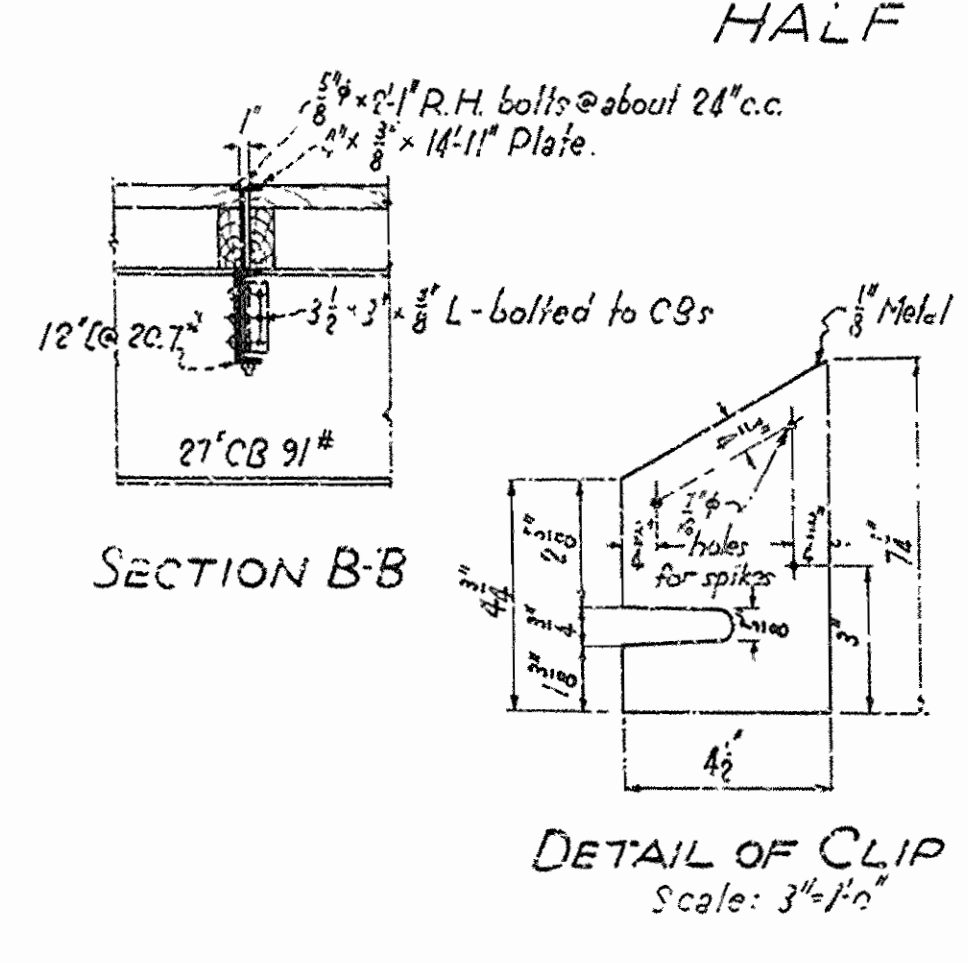
ELEVATION



HALF PLAN

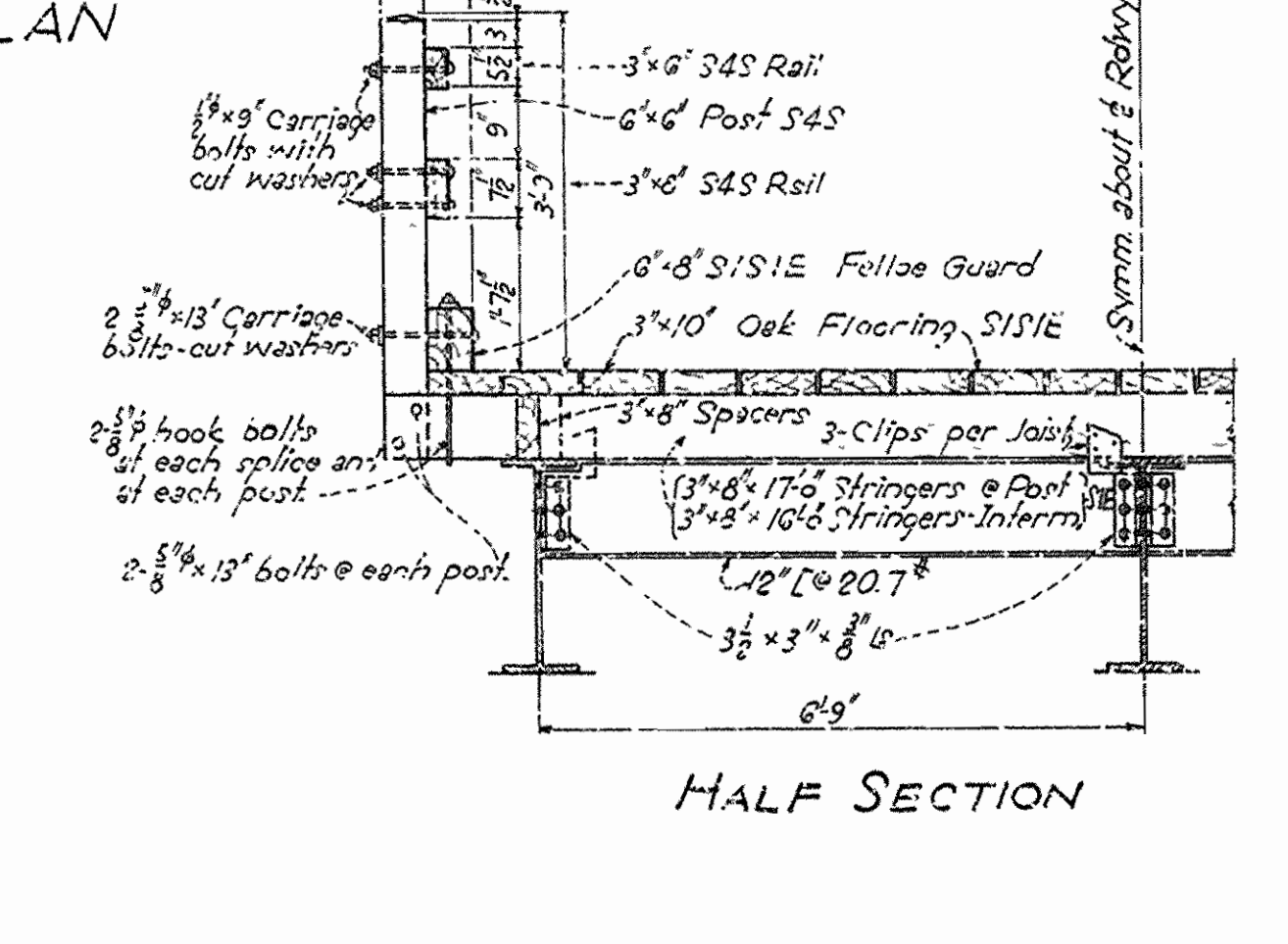


SECTION A-A

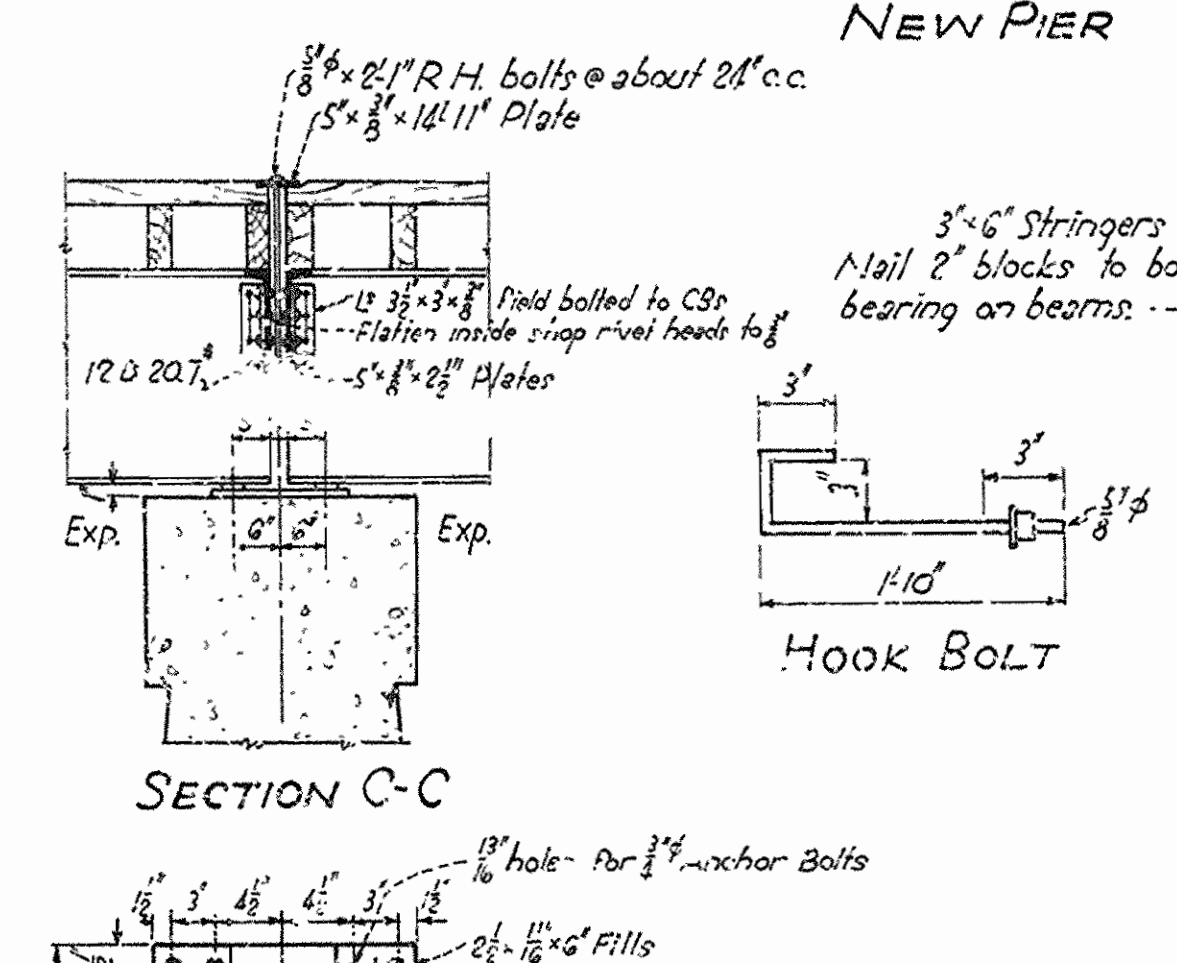


SECTION B-B

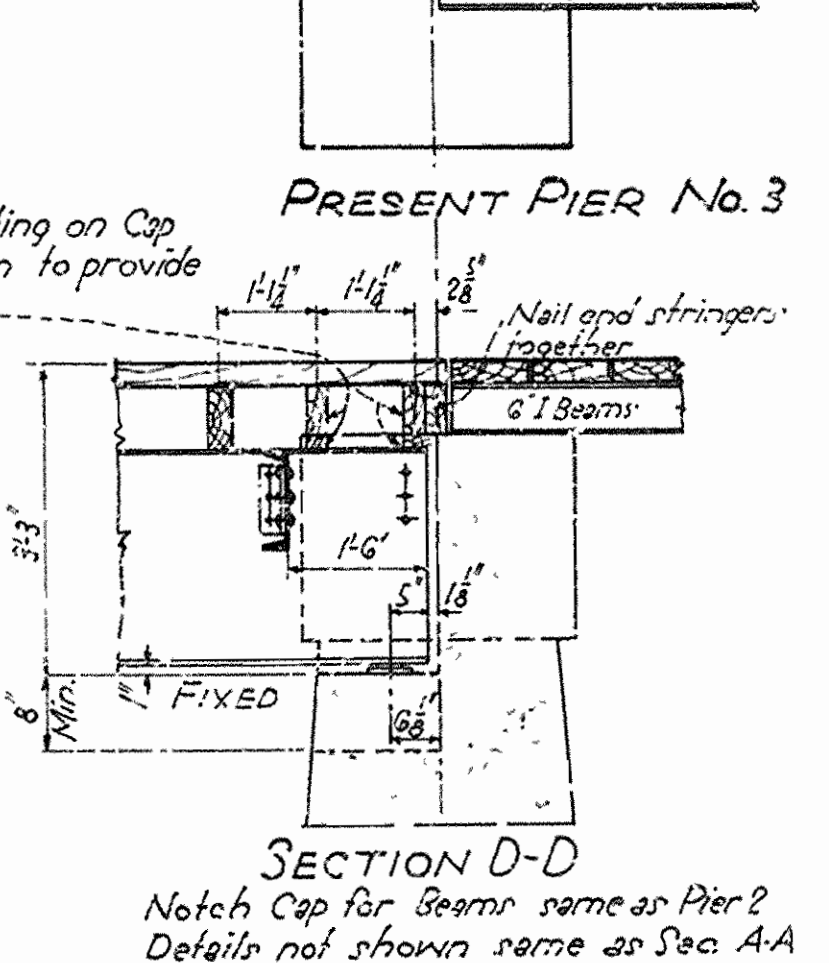
DETAIL OF CLIP Scale: 3/4" = 1'



HALF SECTION



SECTION C-C



SECTION D-D

HOOK BOLT

GENERAL NOTES

Live Load: H-20 Loading. Impact 30% on stringers only. Stresses: $f_y = 18000 \text{ psi}$, $f_t = 1600 \text{ psi}$

All timber to be untreated. Oak flooring to be SISIE. Thickness of planking shall be a maximum of 3 1/2" and a minimum of 2 1/2" with not more than 1/4" variation in adjacent planks. Use 2" x 6" spikes thru each plank at each joint. All timber except flooring to be Southern Yellow Pine or Pacific Coast Douglas Fir.

Malleable or cast iron washers to be used under each bolt head or nut bearing on wood.

All bolts and hardware connections for timber to be painted with red lead prior to construction, and all exposed portions to be painted with black asphaltic paint after construction is completed.

Rivets: 3/8". Open holes: 1/8" Use 3/8" machine bolts for structural steel field connections.

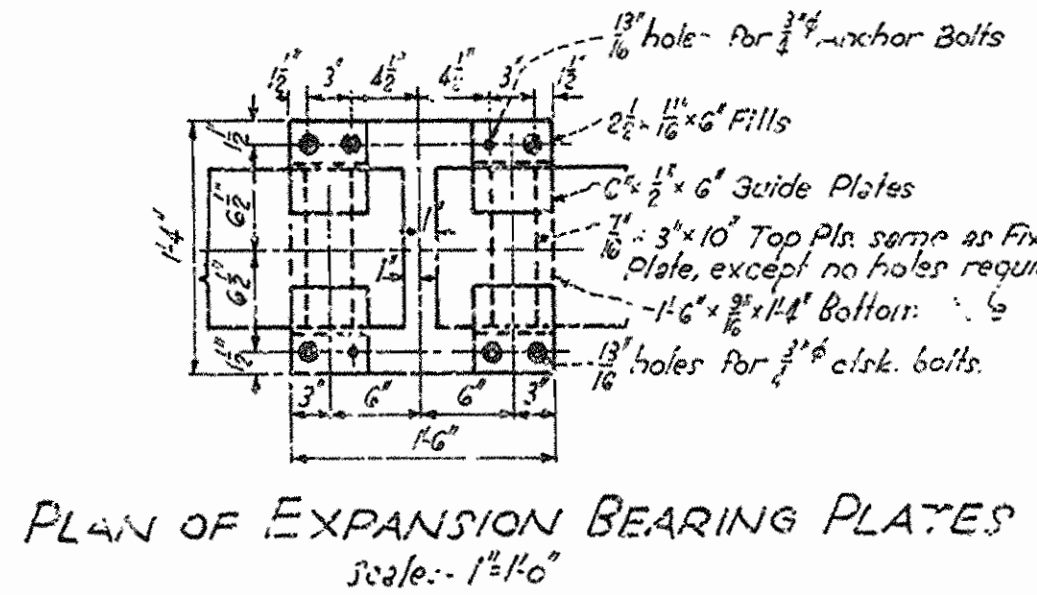
Shop Paint: All structural steel shall be given one coat of red lead and raw linseed oil before shipment.

Field Paint: First coat, white lead tinted with lamp black, second coat, aluminum paint.

This drawing shows general features of design only. Shop drawings shall be made in compliance with specifications and be approved before fabrications is begun.

Specifications: Arkansas State Highway Commission Standard Specifications for Road and Bridge Construction, adopted March 1, 1940.

Masonry plates shall finally be rested on three layers of burlap saturated with red lead. This work and material to be included in the unit price bid for structural steel in beam spans.



PLAN OF EXPANSION BEARING PLATES scale: 1/2" = 1'

DETAILS 50'5" I-BEAM SPANS TO CLOSE GAP IN BRIDGE

OVER FOURCHE RIVER AT DEEP FORD SCOTT COUNTY ROUTE 2 1/2 SEC.

ARKANSAS STATE HIGHWAY COMMISSION LITTLE ROCK, ARK.

Drawn By: B.M.D. Date: 2-17-41 Traced By: B.M.D. Date: 2-10-41 Checked By: Date: Scale: 1/2 in. = 1 ft. BRIDGE NO. 1594 DRAWING NO. 6132

