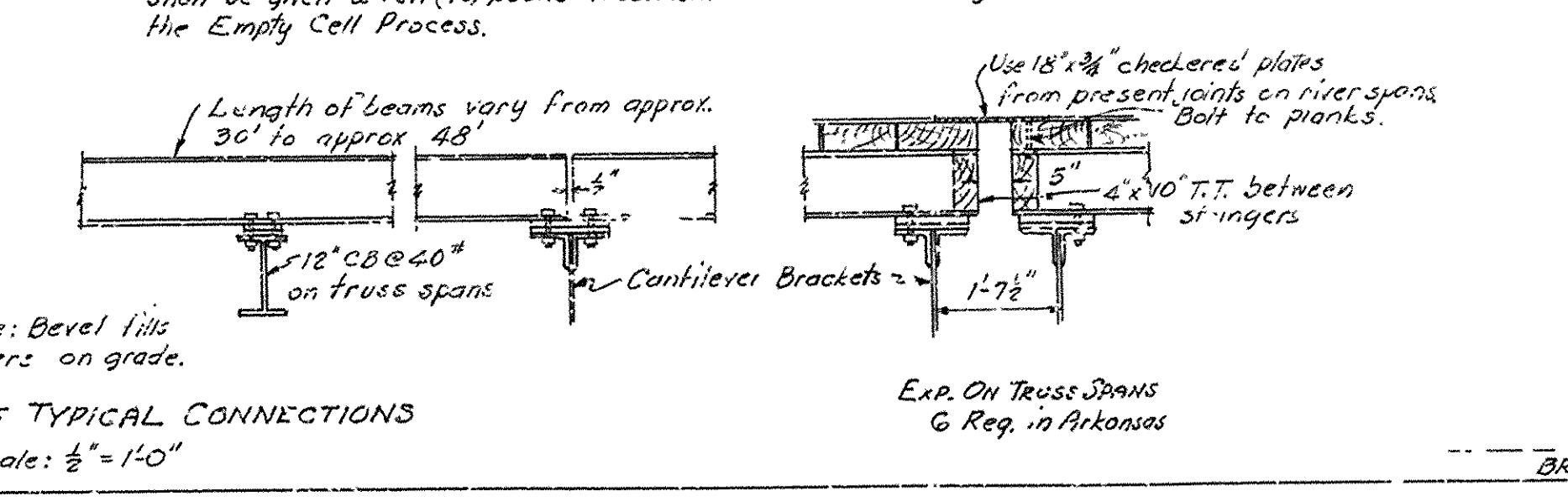
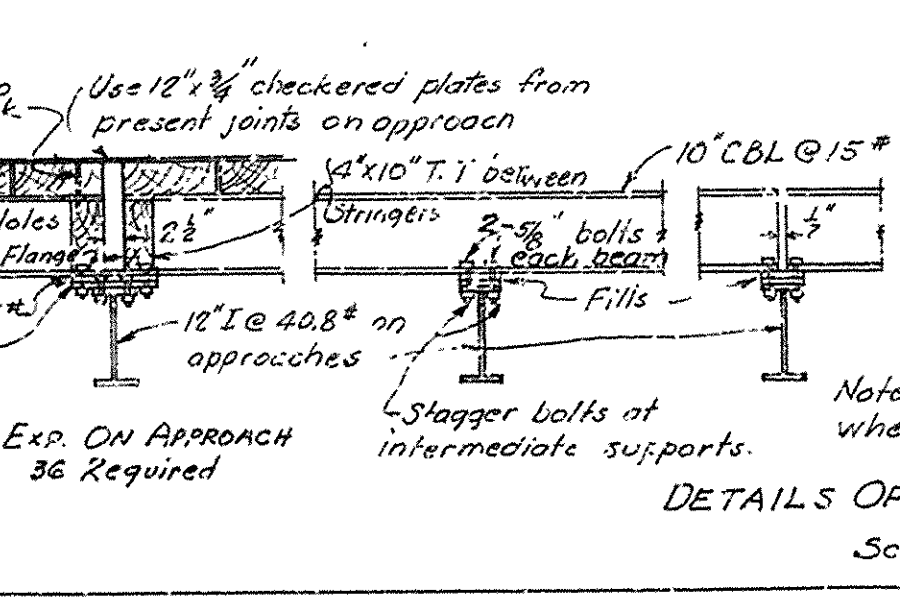
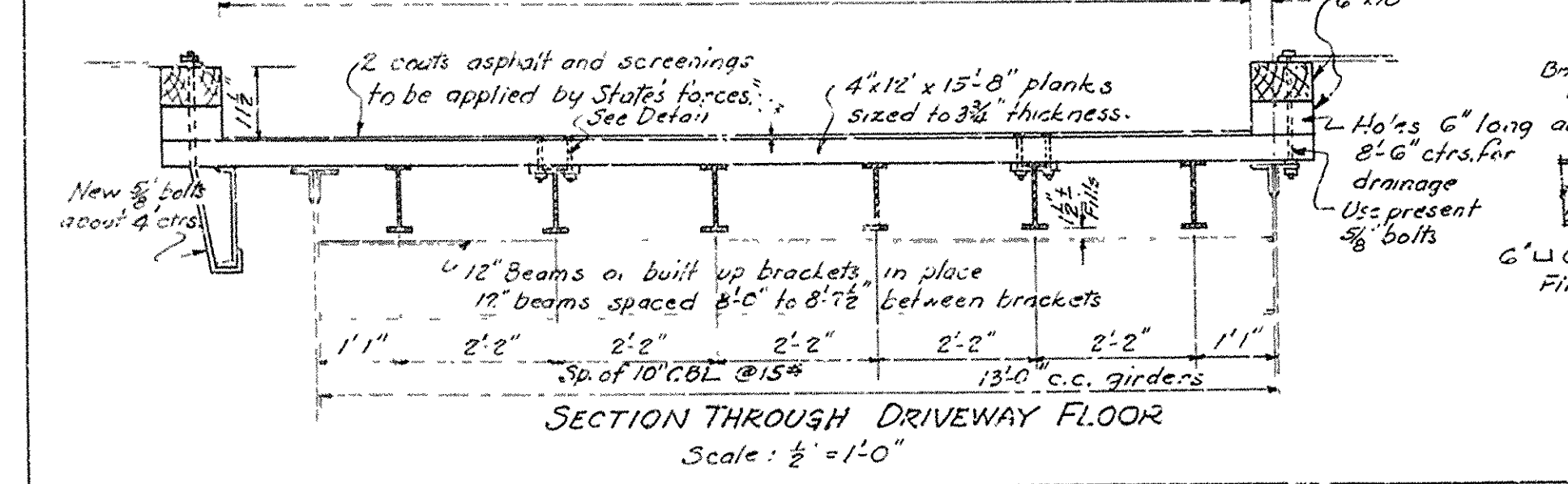


General Notes:
 Specifications - Standard Specifications for Road and Bridge Construction adopted June 30, 1936. For Design see Div. III. For Structural Steel see Div. II Part 8b. For Bridge Timber see Div. II Part 8c and Special Provisions.
 Loading: H20 Highway Loading.
 Work to be performed up to 9'-11 1/2" east of State line.
 Dimensions shown are general only. Detailed dimensions to be secured and verified in the field before shop drawings are made.
 Shop Paint: One coat red lead and raw linseed oil before shipment.
 Field Paint: First coat white lead tinted with lamp black. Second coat aluminum paint.
 Treated Timber: For timber to be treated with creosote oil, timber shall be given a ten (10) pound treatment of Creosote Oil by the Empty Cell Process.

Bid Prices
 Structural steel shall be bid at price per pound.
 Carriage bolts including nuts, cut and lock washers complete shall be bid at price per each.
 Malleable iron clamps shall be bid at price per each.
 Hook bolts shall be bid at price per pound.
 Removing old floor shall be bid at lump sum.
 Timber shall be bid at price per M.F.B.M.



Revised 4-29-37 - Note for treated timber.

Job No. 11148
 RECONSTRUCTION OF DRIVEWAYS
 HARAHAN BRIDGE
 CRITTENDEN COUNTY
 ARKANSAS STATE HIGHWAY COMMISSION
 LITTLE ROCK, ARK.
 L.P.C. 4-14-37 Scale: As Noted
 DRAWING No. 4711
 BRIDGE ENGINEER