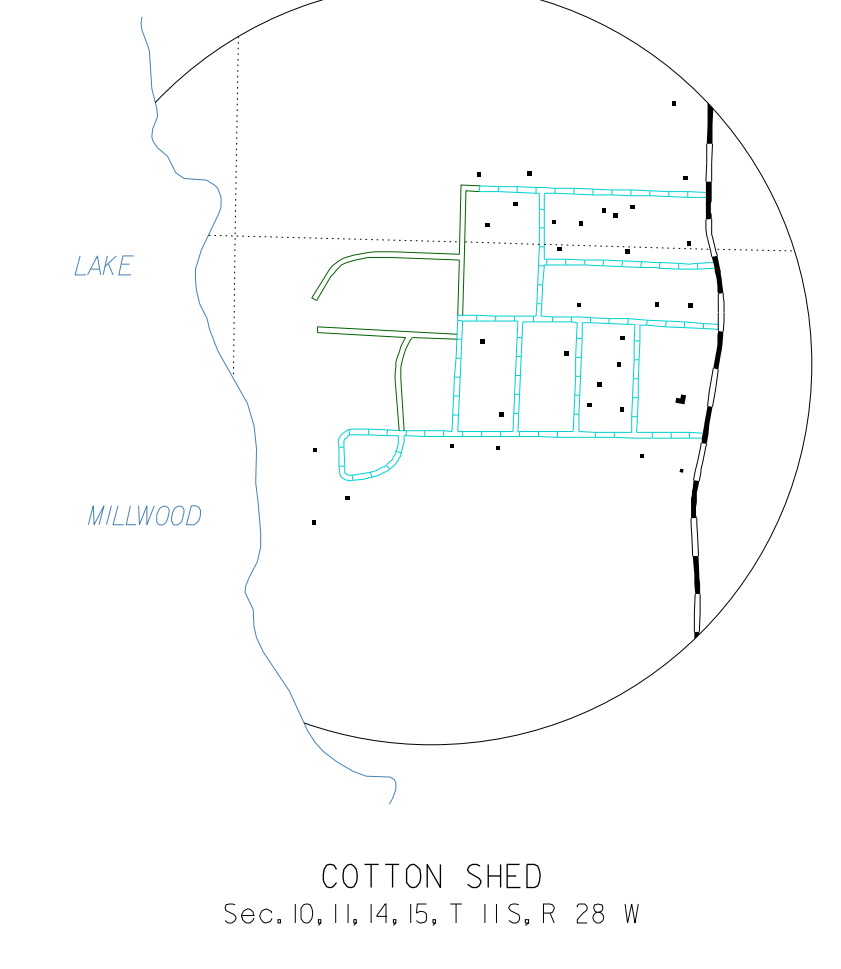
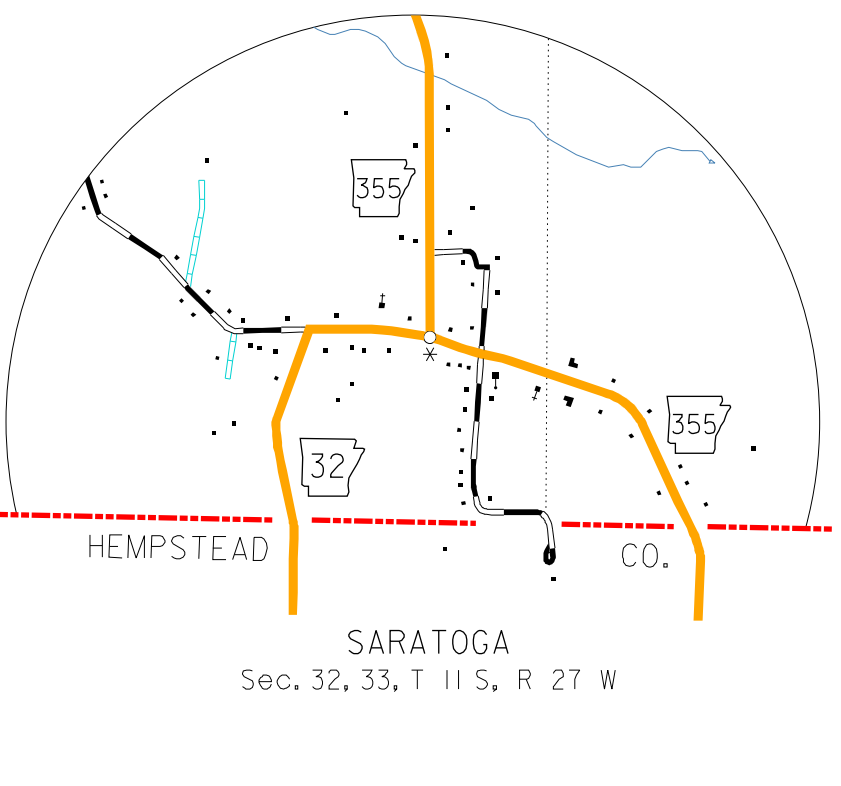
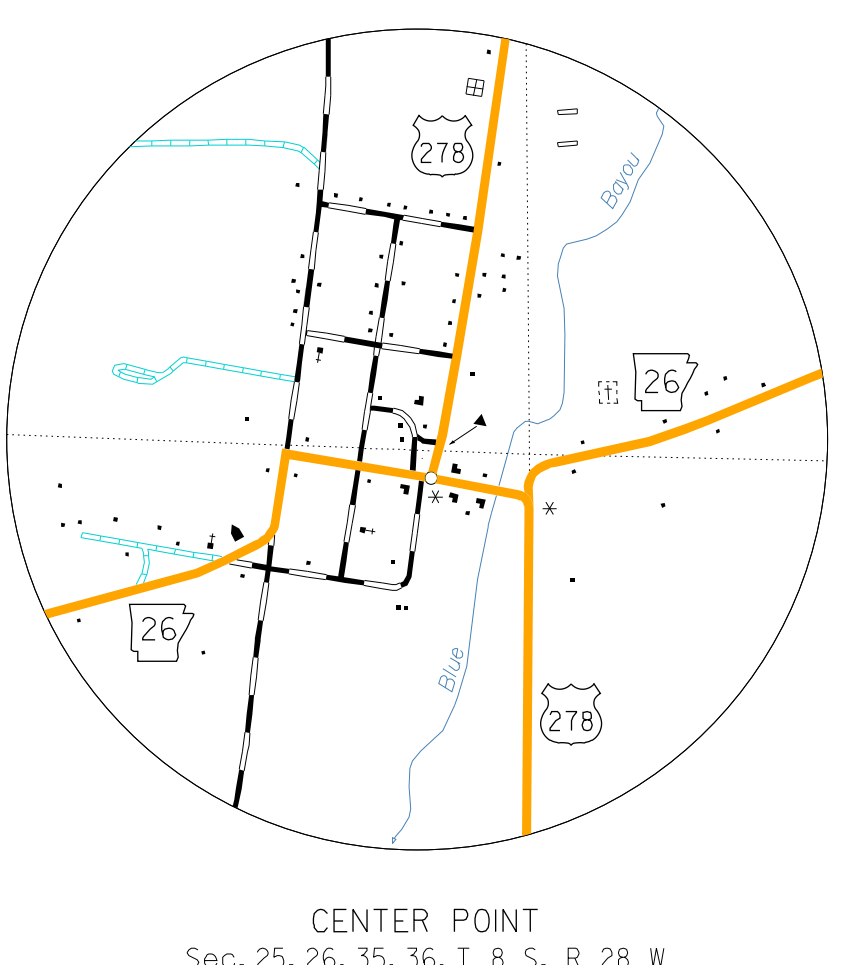
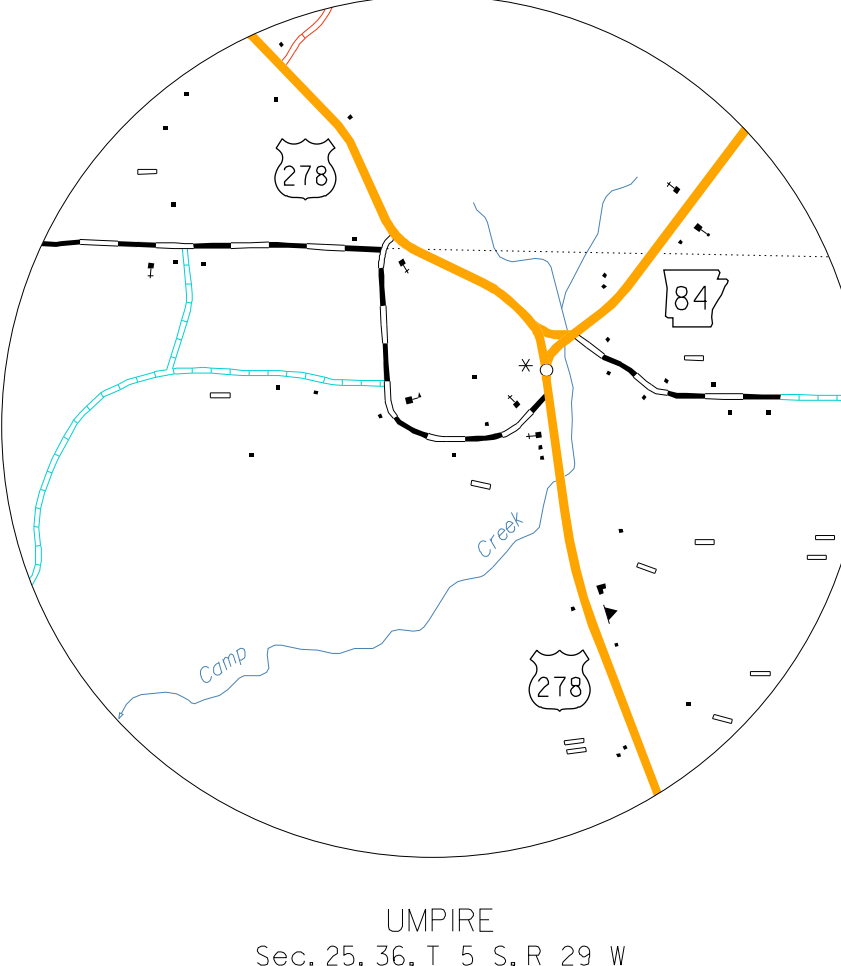
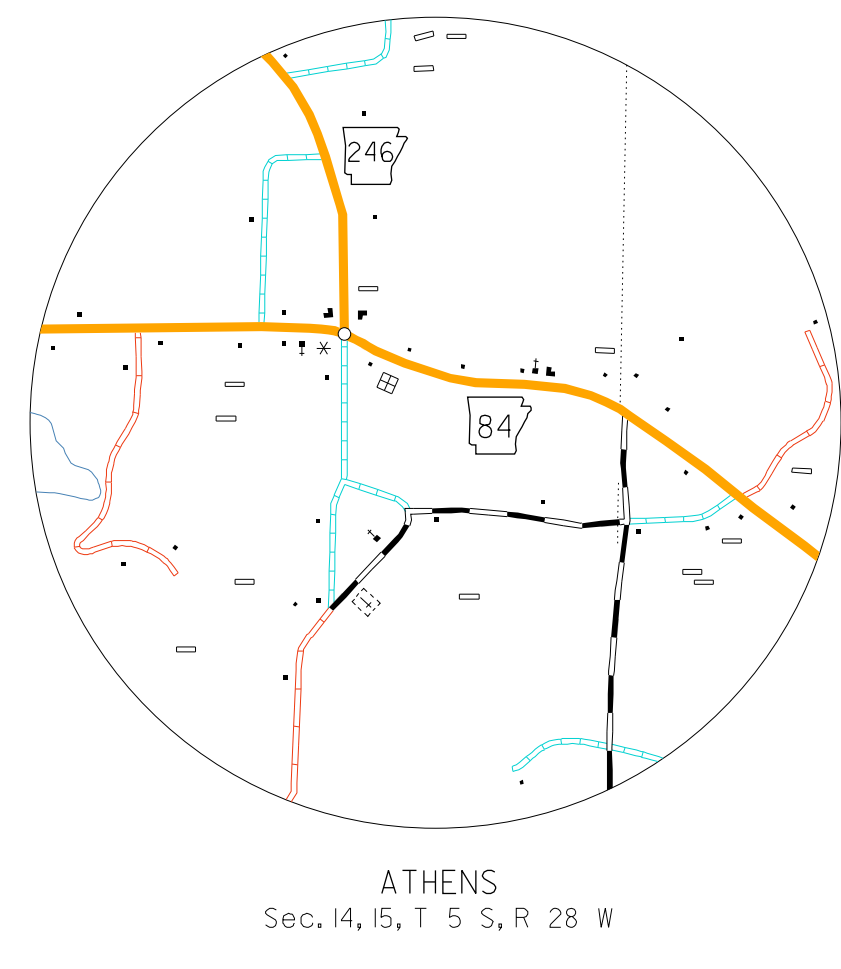
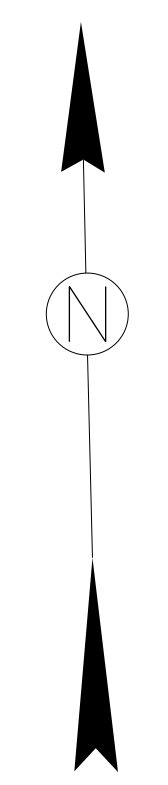


- LEGEND**
- COUNTY BOUNDARY
  - U.S. LAND TOWNSHIP LINE
  - SECTION LINE
  - NATIONAL FOREST BOUNDARY
  - PARK OR RESERVATION BOUNDARY
  - PAVED STATE OR U.S. HIGHWAY
  - U.S. NUMBERED HIGHWAY
  - STATE HIGHWAY
  - PAVED LOCAL ROAD
  - GRAVEL LOCAL ROAD
  - GRADED & DRAINED LOCAL ROAD
  - UNIMPROVED LOCAL ROAD
  - RAILROAD (SEE NUMBER OF TRACKS LISTED BY TRACK SPACING COLUMN)
  - RAILROAD STATION
  - GRADE CROSSING
  - OVERPASS
  - UNDERPASS
  - HIGHWAY BRIDGE (SEE FEET OR MORE IN LENGTH)
  - MILEAGE BETWEEN POINTS
  - PAVED FORD OR LOW WATER BRIDGE
  - LEVEE OR DIKE
  - LAKE, RESERVOIR OR POND
  - LAKE, RESERVOIR OR POND WITH DAM
  - WIDE RIVER OR STREAM
  - DOCK, PIER OR LANDING
  - SMALL STREAM
  - CORPORATE LIMITS AND ROADS THROUGH TOWN
  - COUNTY SEAT
  - OTHER CITIES AND TOWNS
  - MUNICIPAL AIRPORT
  - PRIVATE AIRFIELD
  - FARM UNIT OR DWELLING
  - GROUP OF CLOSELY SPACED DWELLINGS (if no road shown)
  - CHURCH OR OTHER RELIGIOUS INSTITUTION
  - SCHOOL
  - POST OFFICE - POST OFFICE AND BUSINESS
  - CEMETERY
  - CHURCH WITH CEMETERY ADJACENT
  - BUSINESS ESTABLISHMENT
  - FACTORY OR INDUSTRIAL PLANT
  - GRAVEL PIT
  - QUARRY
  - TOWN OR COMMUNITY HALL
  - A.S.T.D. GARAGE OR COUNTY GARAGE
  - FIRE ENGINE HOUSE
  - POWER SUBSTATION
  - TRAILER PARK
  - HISTORICAL MONUMENT
  - CAMP OR LODGE
  - GOLF COURSE OR COUNTRY CLUB
  - WATER SUPPLY STANDPIPE OR TANK
  - CHICKEN HOUSE OR OTHER LIVESTOCK



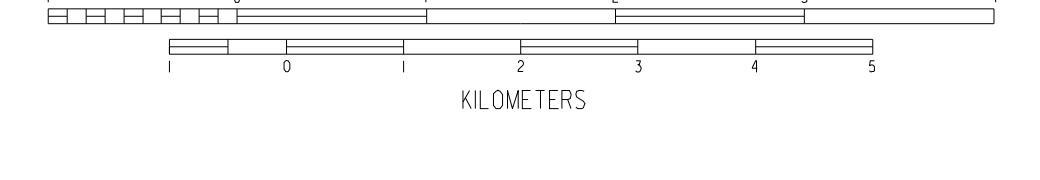
NOTE: Enlargements of all congested areas are five times map scale unless otherwise noted.  
Individual maps are available for all active incorporated cities.  
Area: 198.23 Square Miles  
Population: 4,200, 2000 Census  
Map Issued: 6-9-05, replaces map issued 4-10-98  
Field Inventory: 9/17

Map revisions made from aerial photographs taken 2-3-98  
Map compilation completed 2-28-00  
County map produced using Computer Assisted Cartography.  
Map Revised: 05-02-2006, resection of S4, 26, Section land S4, 26, Section L-10



GENERAL HIGHWAY MAP  
**HOWARD COUNTY**  
ARKANSAS

PREPARED BY:  
ARKANSAS STATE HIGHWAY AND TRANSPORTATION DEPARTMENT  
PLANNING AND RESEARCH DIVISION  
IN COOPERATION WITH:  
U.S. DEPARTMENT OF TRANSPORTATION  
FEDERAL HIGHWAY ADMINISTRATION  
SCALE: 1:62,500



Copies of this map are available at a nominal fee from the Arkansas State Highway and Transportation Department, P.O. Box 220-1116 Rock, Ark, 72203

