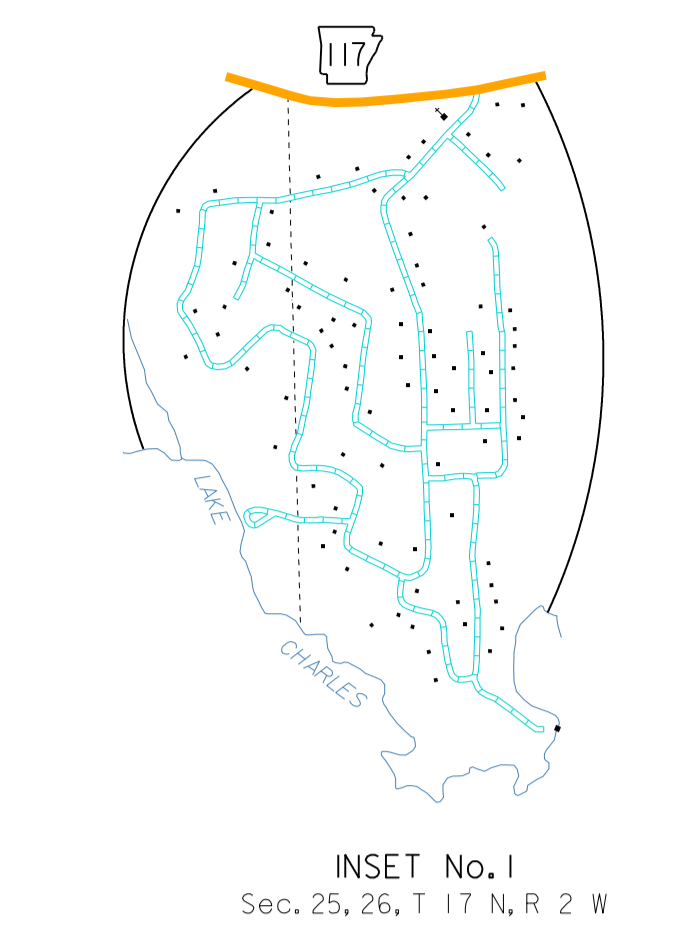
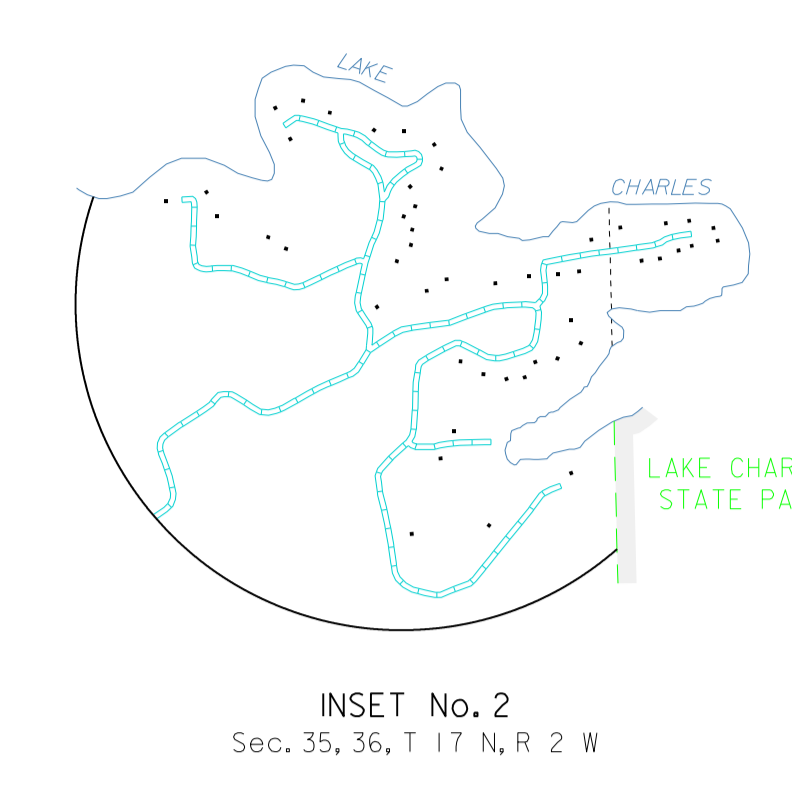
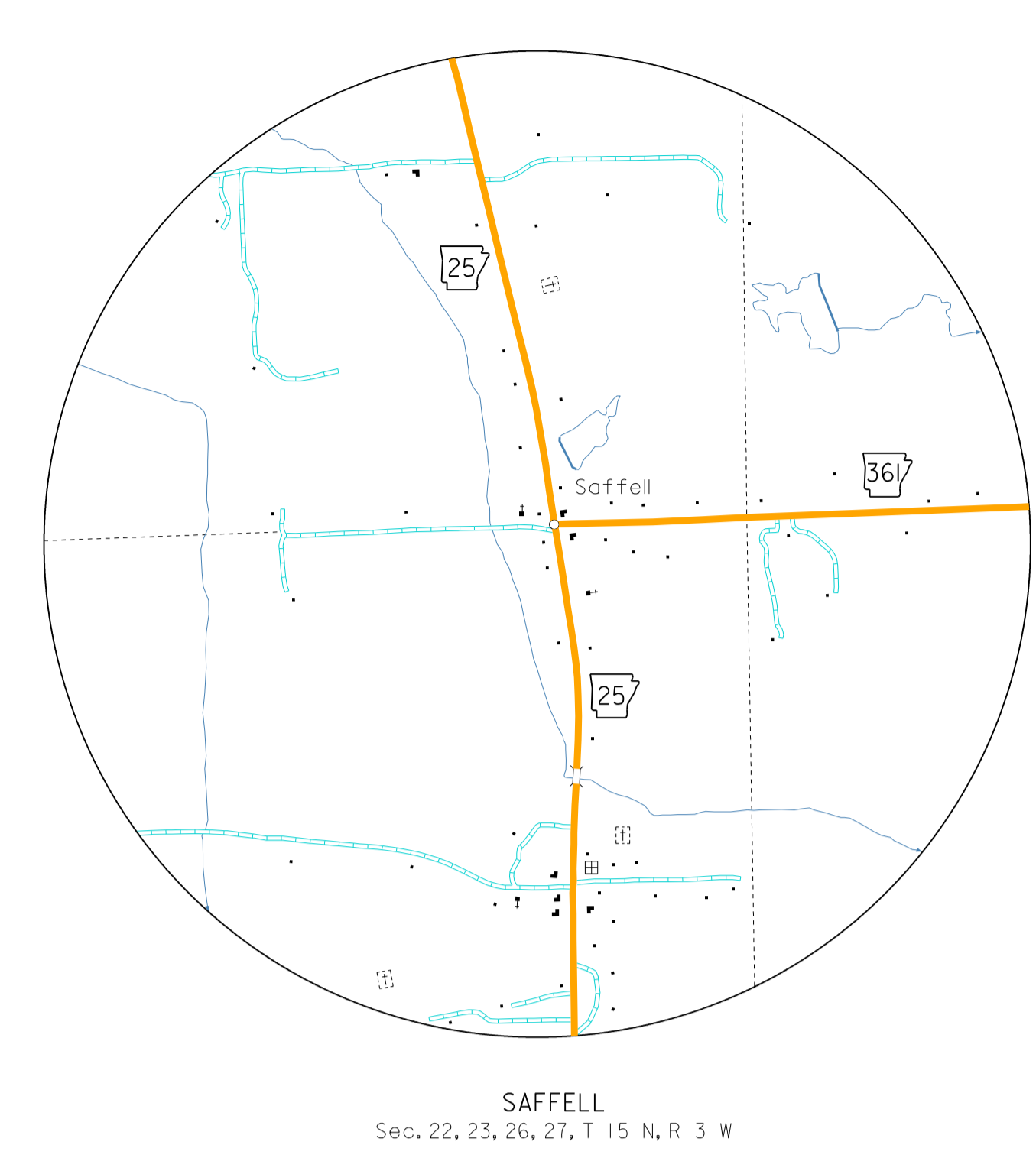
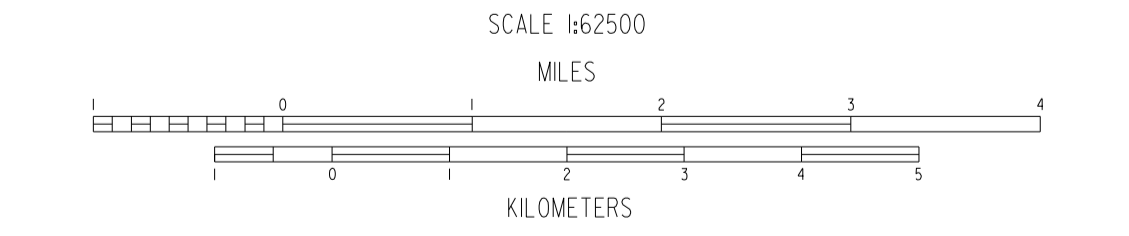


- LEGEND**
- COUNTY BOUNDARY
 - U.S. LAND TOWNSHIP LINE
 - SECTION LINE
 - PARK OR RESERVATION BOUNDARY
 - PAVED STATE OR U.S. HIGHWAY
 - 63 U.S. NUMBERED HIGHWAY
 - 25 STATE HIGHWAY
 - PAVED LOCAL ROAD
 - GRAVEL LOCAL ROAD
 - GRADED & DRAINED LOCAL ROAD
 - UNIMPROVED LOCAL ROAD
 - RAILROAD (INDICATES NUMBER OF TRACKS USED BY RAILROAD OPERATING COMPANY)
 - RAILROAD STATION
 - GRADE CROSSING
 - OVERPASS
 - UNDERPASS
 - HIGHWAY BRIDGE (60 FEET OR MORE IN LENGTH)
 - PAVED FORD OR LOW WATER BRIDGE
 - MILEAGE BETWEEN POINTS
 - 66 LAKE, RESERVOIR OR POND
 - LAKE, RESERVOIR OR POND WITH DAM
 - MARSH OR SWAMP
 - WIDE RIVER OR STREAM
 - DOCK, PIER OR LANDING
 - INTERMITTENT NAVIGATION
 - HEAD OF NAVIGATION (MARK DEPARTMENT DESIGNATION)
 - SMALL STREAM
 - DRAINAGE DITCH
 - CORPORATE LIMITS AND ROADS THROUGH TOWN
 - COUNTY SEAT
 - OTHER CITIES AND TOWNS
 - MUNICIPAL AIRPORT
 - PRIVATE AIRFIELD
 - FARM UNIT OR DWELLING
 - CHURCH OR OTHER RELIGIOUS INSTITUTION
 - SCHOOL
 - POST OFFICE + POST OFFICE AND BUSINESS
 - 30 CEMETERY
 - 31 CHURCH WITH CEMETERY ADJACENT
 - BUSINESS ESTABLISHMENT
 - GRAVEL PIT QUARRY
 - AUTO, GARAGE OR COUNTY GARAGE
 - FIRE ENGINE HOUSE
 - GAUGING OR PUMPING STATION
 - POWER SUBSTATION
 - TRAILER PARK
 - FISH HATCHERY
 - CAMP OR LODGE
 - GOLF COURSE OR COUNTRY CLUB
 - SMALL PARK (UP STATE, OF COUNTY, OR MUNICIPAL, BY WAYSIDE, OR REST AREA)
 - WATER SUPPLY STANDPIPE OR TANK
 - SEWAGE DISPOSAL PLANT
 - GARBAGE DUMP OR SANITARY LANDFILL
 - CHICKEN HOUSE OR OTHER LIVESTOCK



GENERAL HIGHWAY MAP
LAWRENCE COUNTY
 ARKANSAS

PREPARED BY
 ARKANSAS STATE HIGHWAY AND TRANSPORTATION DEPARTMENT
 TRANSPORTATION PLANNING AND POLICY DIVISION
 IN COOPERATION WITH
 U.S. DEPARTMENT OF TRANSPORTATION
 FEDERAL HIGHWAY ADMINISTRATION



Copies of this map are available at a nominal fee from the Arkansas State Highway and Transportation Department, P.O. Box 228-Little Rock, Ark. 72203



NOTES: Enlargements of all congested areas are five times map scale unless otherwise noted.
 Map scale unless otherwise noted.
 Individual maps are available for all active incorporated cities.
 Area: 592.34 square miles
 Population: 145,000 (2000 Census)
 Map Issued: 1-18-08, "arkansas" map issued 9-20-96
 Field Inventory: 9/15
 Map revisions made from aerial photographs taken 2-2002
 Map compilation completed 8-28-07
 County map produced using Computer Assisted Cartography.
 Map Revised 08-30-2004, U.S. 67 Section 8B, Redesignated S.A. 367 Section 22
 Map Revised 08-30-2004, U.S. 67 Section 8, Redesignated S.A. 367 Section 22
 Map Revised 08-30-2004, Added New Alignment U.S. 67 Section 17
 Map Revised 0-30-2004, Walnut Ridge and Cove City consultation - Effective Jan. 1, 2017