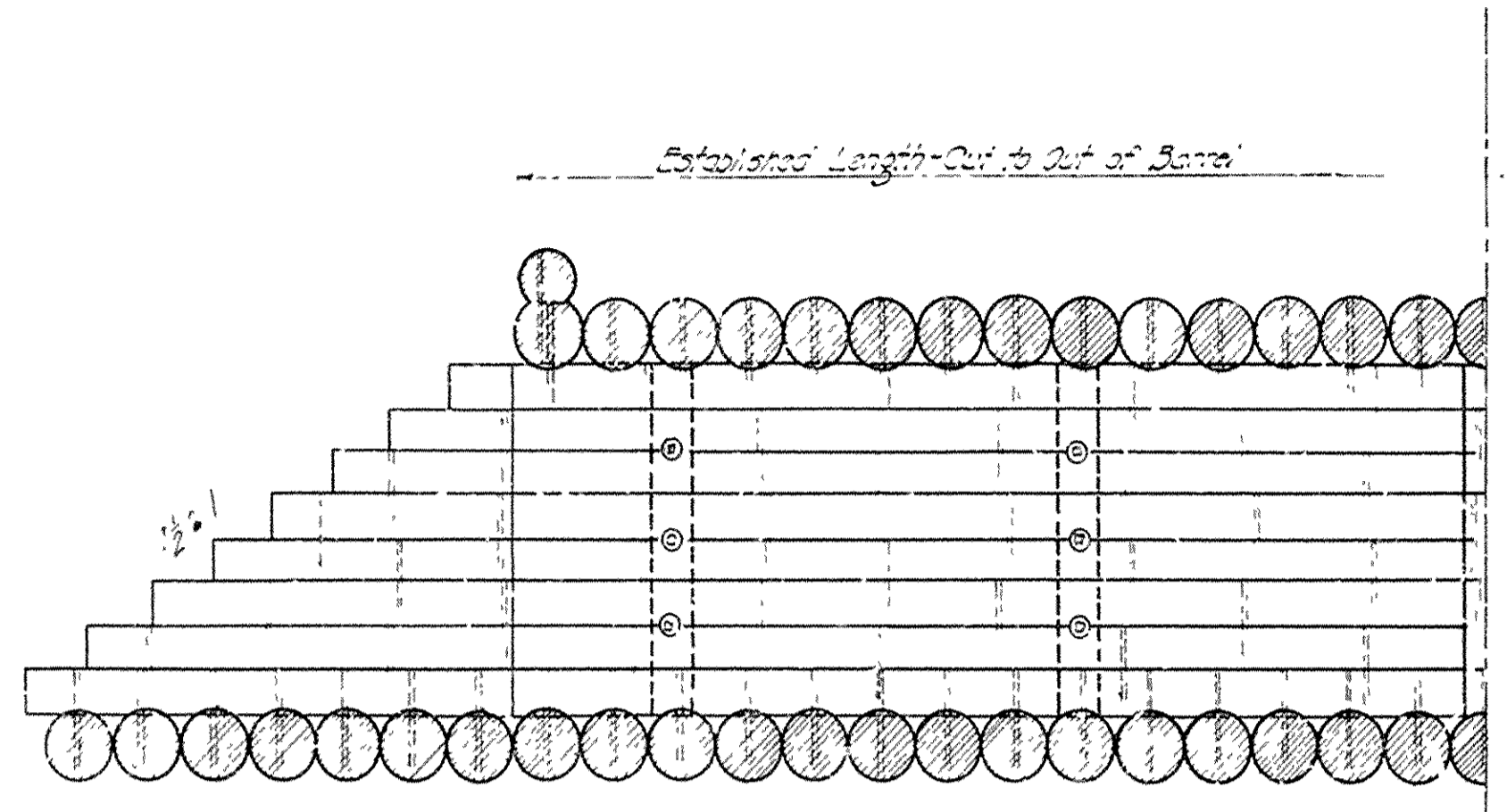
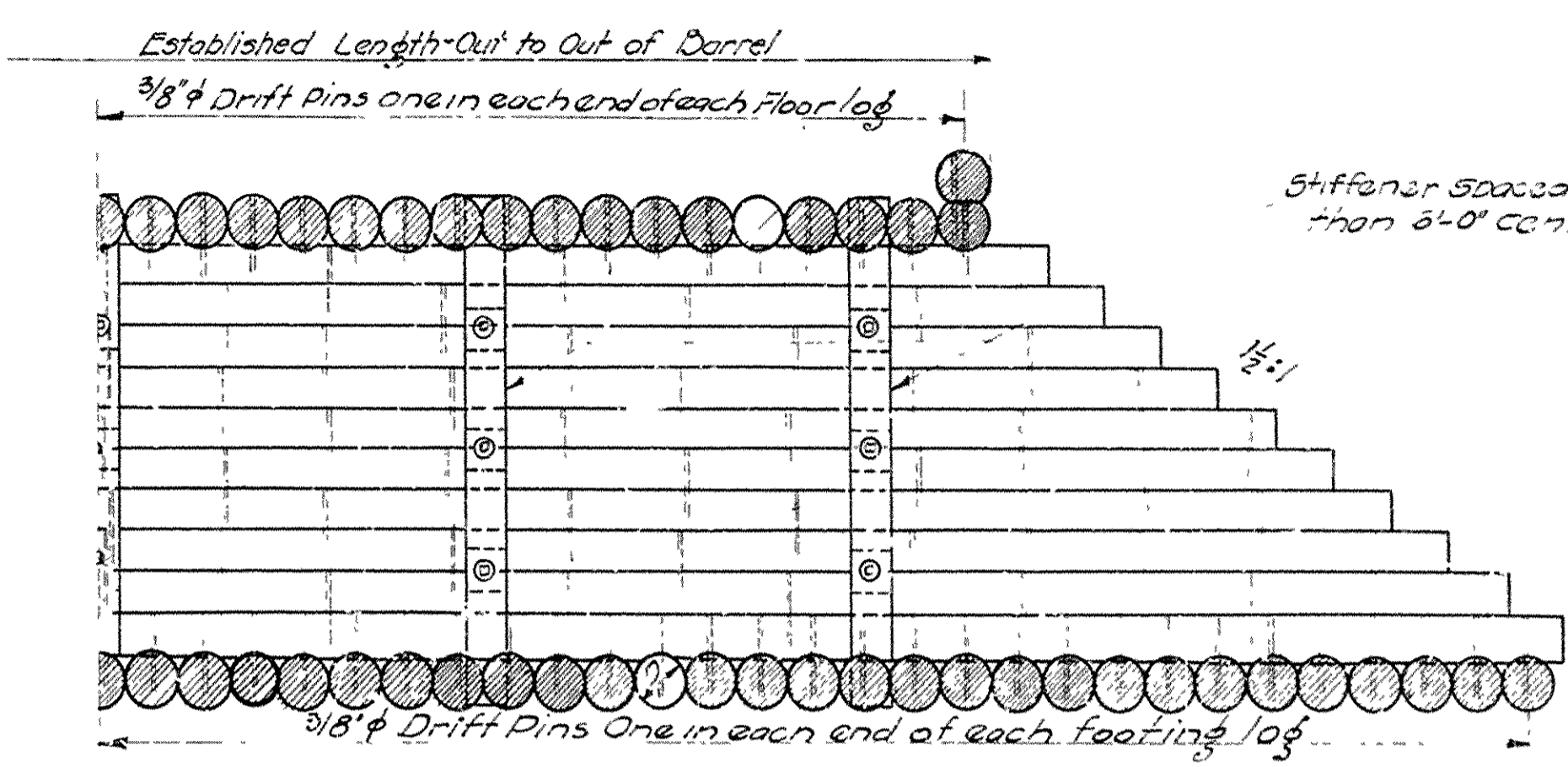


FED. ROAD DIST. NO.	STATE	ARK. FOREST PROJ. NO.	FISCAL YEAR	SHEET NO.	TOTAL SHEETS
6	ARK.	E-A-7-B	1930	5	5

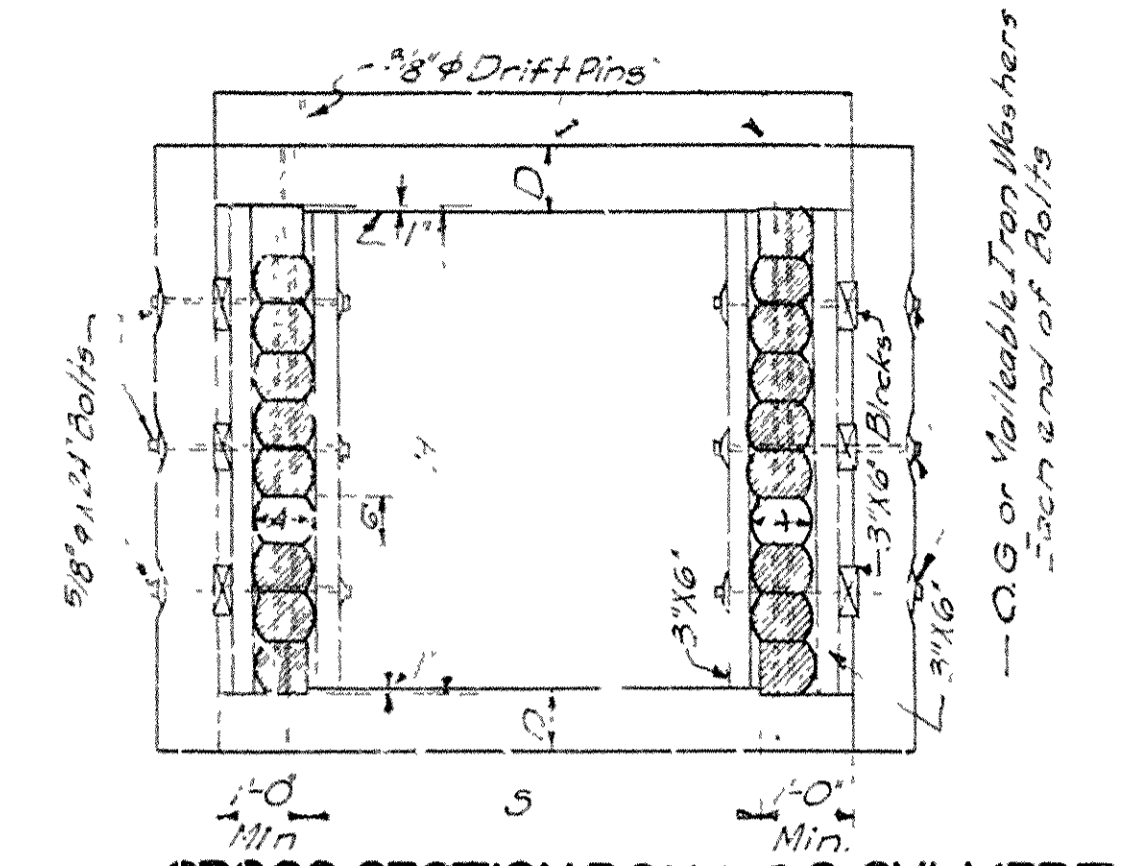
Job 8176



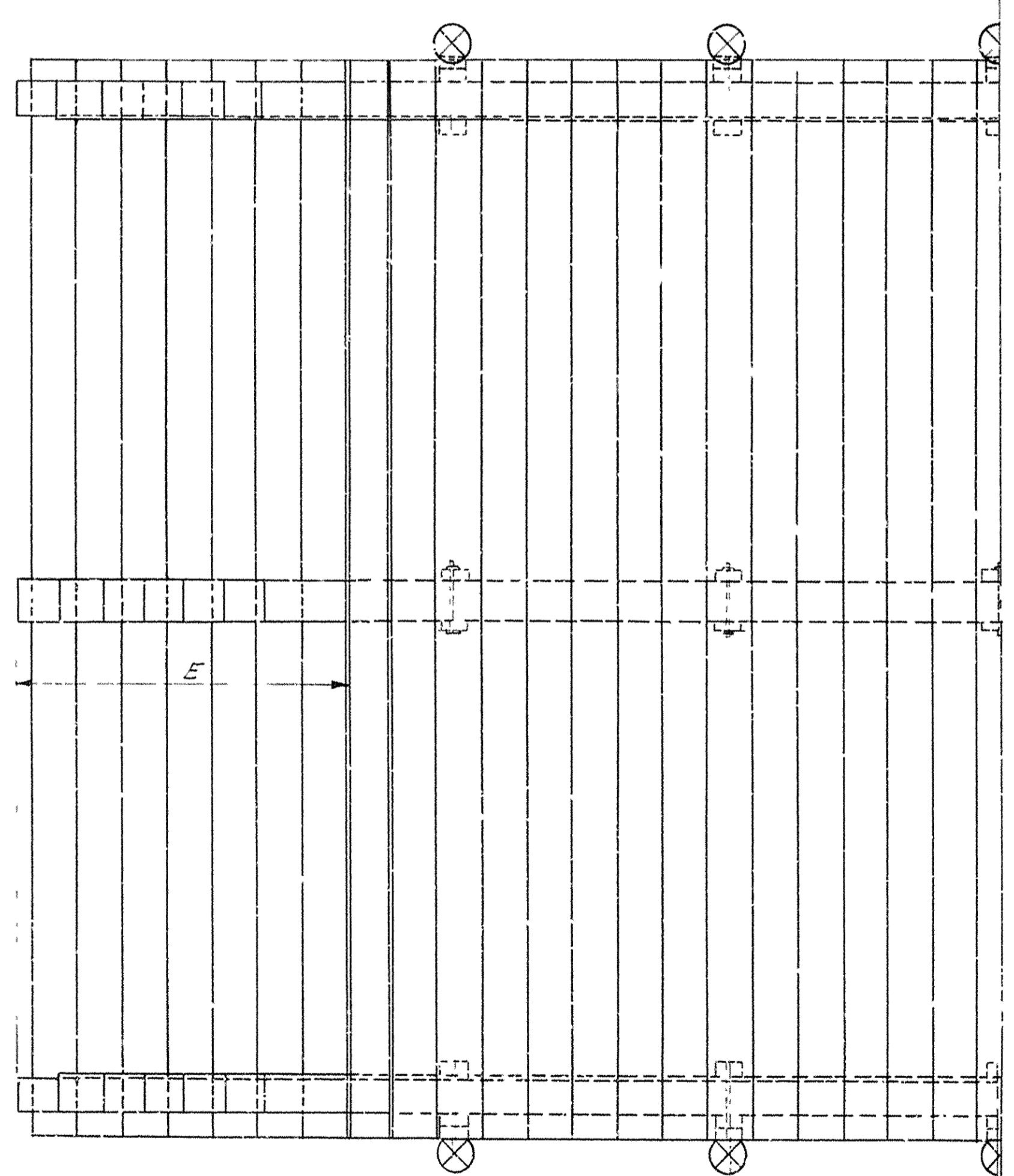
HALF SECTION DOUBLE BOX LOG CULVERT



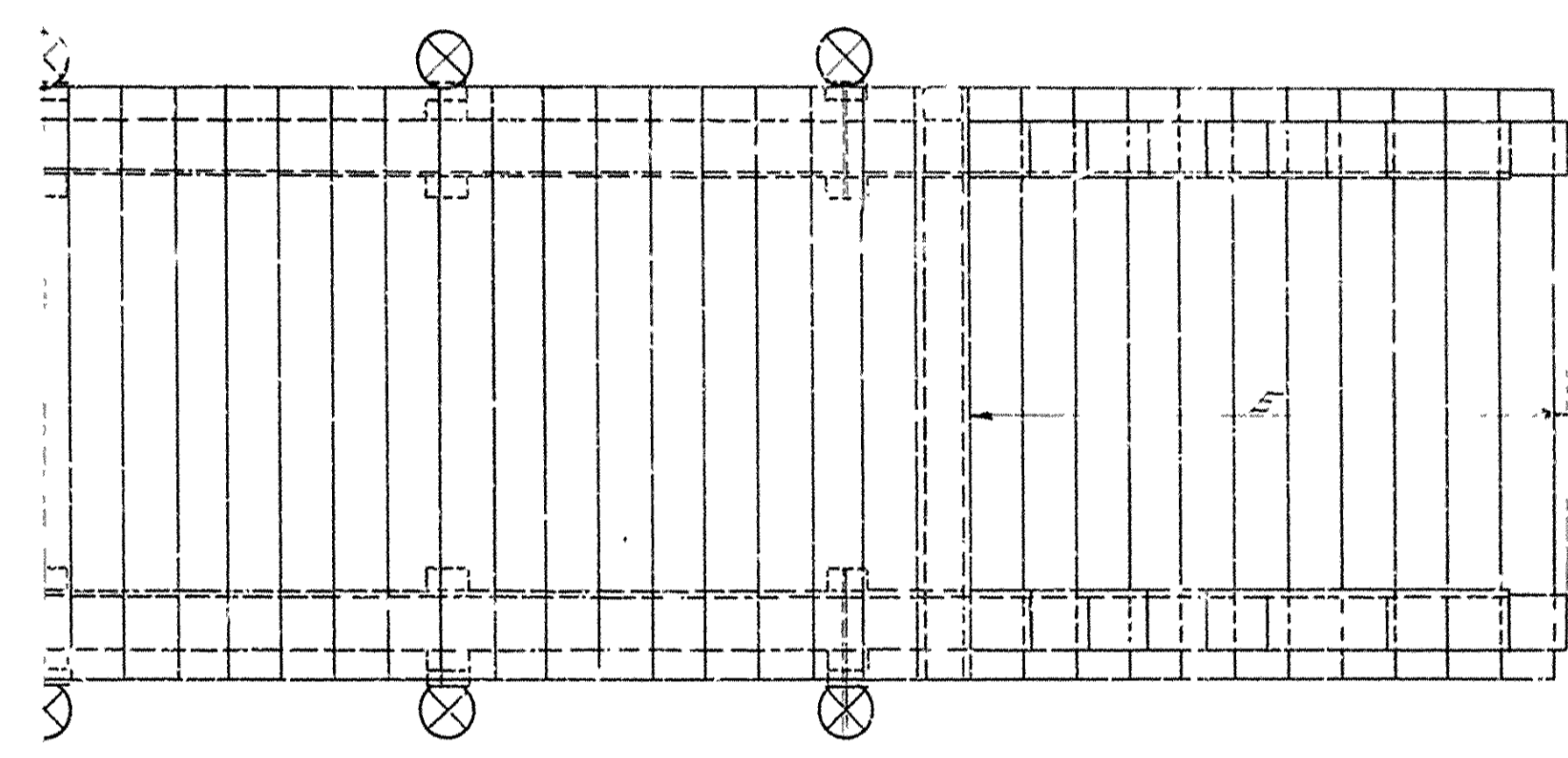
HALF SECTION BOX LOG CULVERT



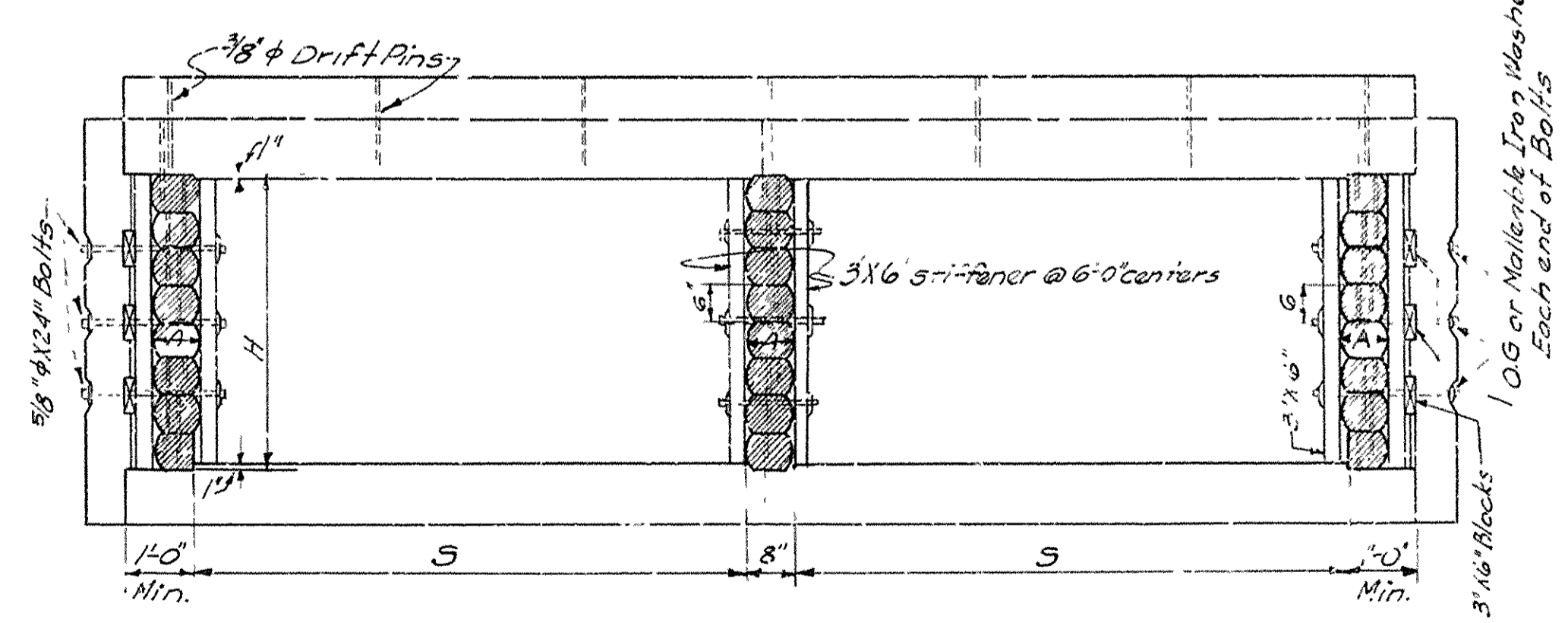
CROSS SECTION BOX LOG CULVERT



HALF PLAN DOUBLE LOG CULVERT



HALF PLAN SINGLE BOX LOG CULVERT.



CROSS SECTION DOUBLE LOG BOX CULVERT

S	4	D	A	E	LENGTHS OF APPROX. 3/8\"/>
3	2	8'	8'	3'-0"	24"
4	3	8'	8'	4'-6"	24"
5	4	8'	8'	6'-0"	24"
6	5	8'	10'	7'-6"	24"
7	3	8'	8'	7'-6"	24"
8	5	8'	10'	7'-6"	24"
9	3	10'	8'	4'-6"	24"
10	6	10'	10'	8'-0"	24"

GENERAL NOTES

All floor logs both top and bottom to be fastened to each end with 3/8" drift pins to the walls.  
 Each wall log to be fastened to each succeeding log by 3/8" drift pins spaced not greater than 3'-0".  
 All logs to be a life size cut or post cut.

STANDARD LOG BOX CULVERT  
 SINGLE AND DOUBLE

ROUTE SEC.  
 ARKANSAS STATE HIGHWAY COMMISSION  
 LITTLE ROCK, ARK.  
 Drawn By: W.E. A. Date: 2-2-30  
 Traced By: W.K.W. Date: 11-3-30  
 Checked By: \_\_\_\_\_ Date: \_\_\_\_\_  
 Scale: 1 in = 16 ft.  
 BRIDGE NO. \_\_\_\_\_ DRAWING NO. 5

BRIDGE ENGINEER