

FISCAL YEAR	Job No.	SHEET NO.	TOTAL SHEETS
1930	3164	1	2

INDEX OF SHEETS

Sheet No. 1 Drawing No. 3017 Title Sheet
 " " 2 " " 3018 Layout and Details of Repairs

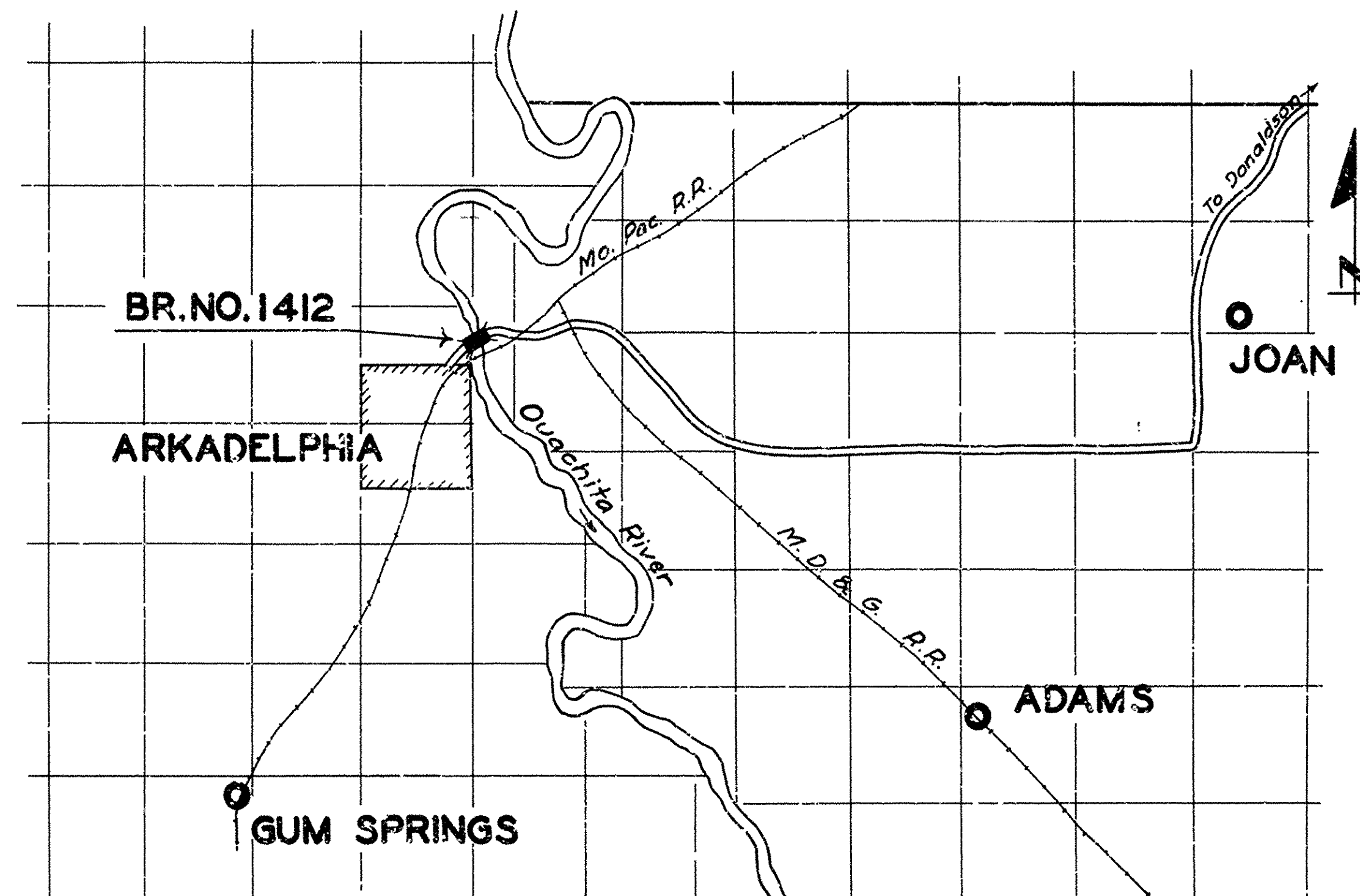
STATE OF ARKANSAS
 STATE HIGHWAY COMMISSION

PLAN OF PROPOSED REPAIRS
 TO BRIDGE OVER
 OUACHITA RIVER
 CLARK COUNTY

ROUTE 67 SEC. 6
 JOB NO. 3164

QUANTITIES

Item No.	13	Dry excavation for structures	174	Cu. yds.
" "	54	Class "A" concrete	2260	" "
" "	36	Structural steel (truss bridges)	9660	Lbs.
" "	S.P.	1" asphalt plank	910	Sq. yds.
" "	S.P.	Maintaining traffic	Lump	Sum
" "	S.P.	Cleaning & painting existing structure	Lump	Sum
" "	S.P.	Repairing existing structure	Lump	Sum
Alternate of:				
Item No. S.P. & 52		Treated bridge timber	46.103	M.F.T.B.M.
Or alternate of:				
Item No. S.P. & 52		Redwood bridge timber	33.534	"
" " S.P. & 52		Treated bridge timber	12.569	"



The Specifications adopted by the State Highway Commission, May 30th., 1928 apply with subsequent revisions and Special Provisions noted apply to this Project.

SPECIAL PROVISIONS

Amphlet	Revised	Item	No. of Sheets
A	Sept. 1st, 1928		
B		Concrete aggregate	2
C	Revised July 1st, 1928	Bridge timber	12
D		Section B2	1
E		Material by Contractor	1
F		Maintaining traffic	1
G		Cleaning & painting existing structure	1
H	Revised Oct. 1st, 1928	Repairing existing structure	1
I		Asphalt wearing surface	1
J	Revised Jan. 1st, 1929	Aluminum paint	1
K			
L	Revised Jan. 1st, 1929		

LAYOUT

Scale: 1" = 1 Mile

LENGTH OF PROJECT = 546'-0"
 LENGTH OF BRIDGES = 546'-0"
 LENGTH OF EMBANKMENT = 0

APPROVED
 CHAIRMAN - STATE HIGHWAY COMMISSION

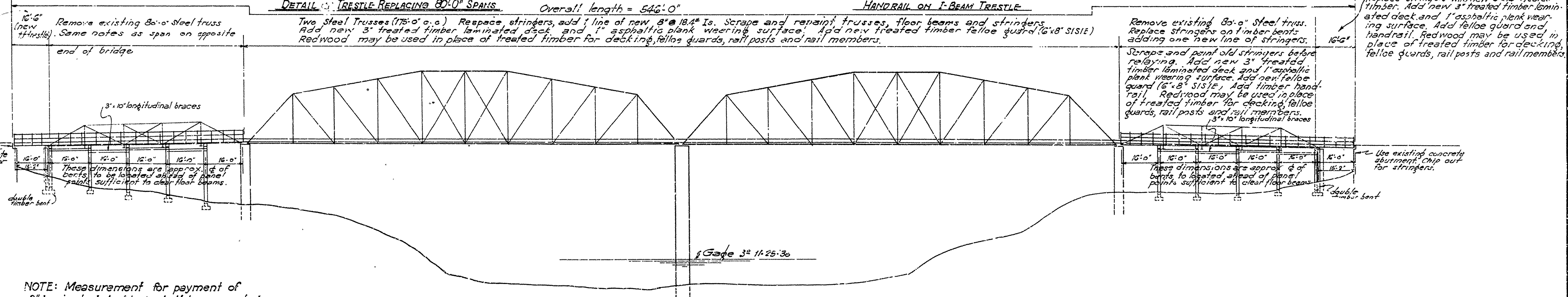
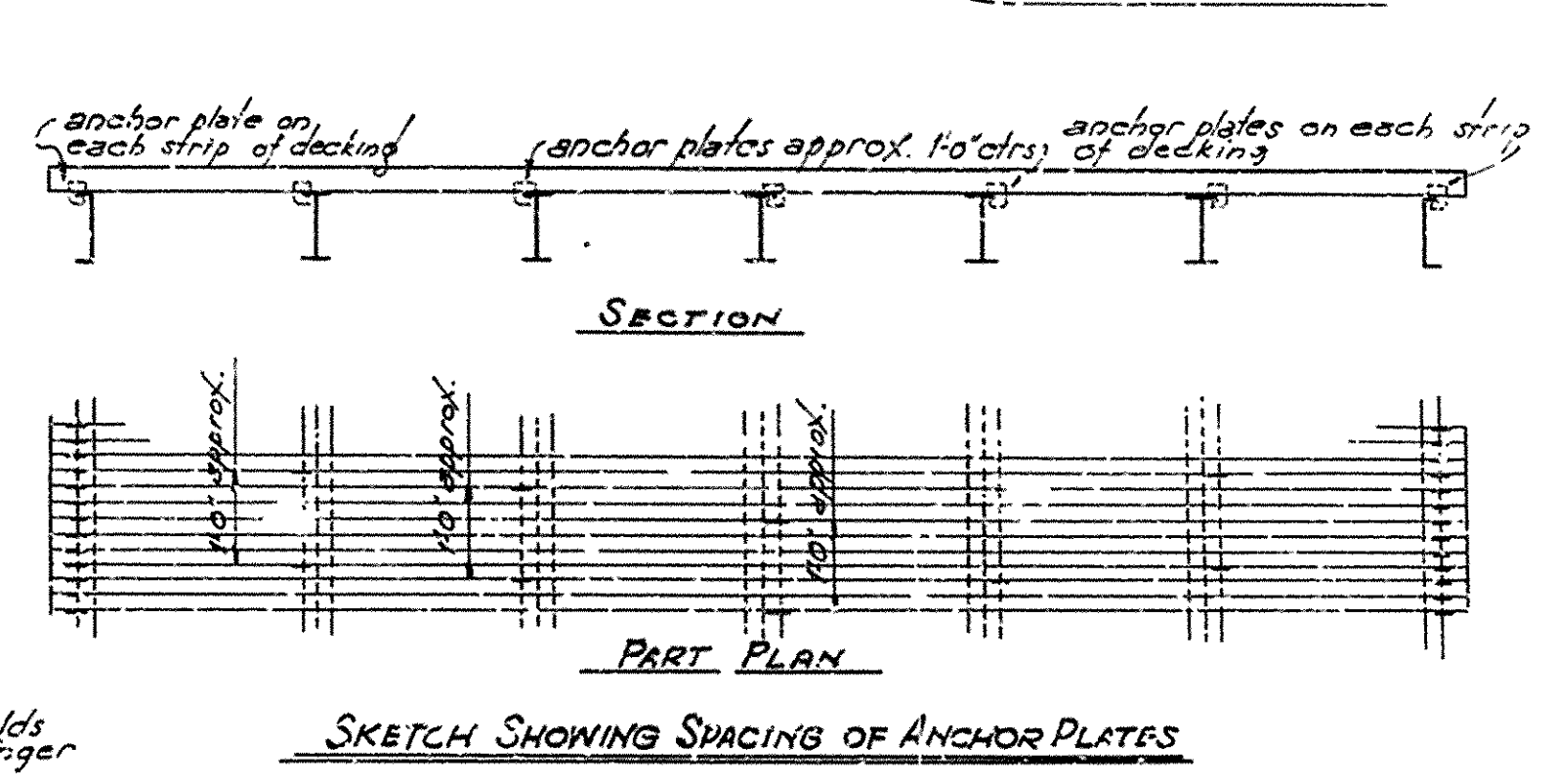
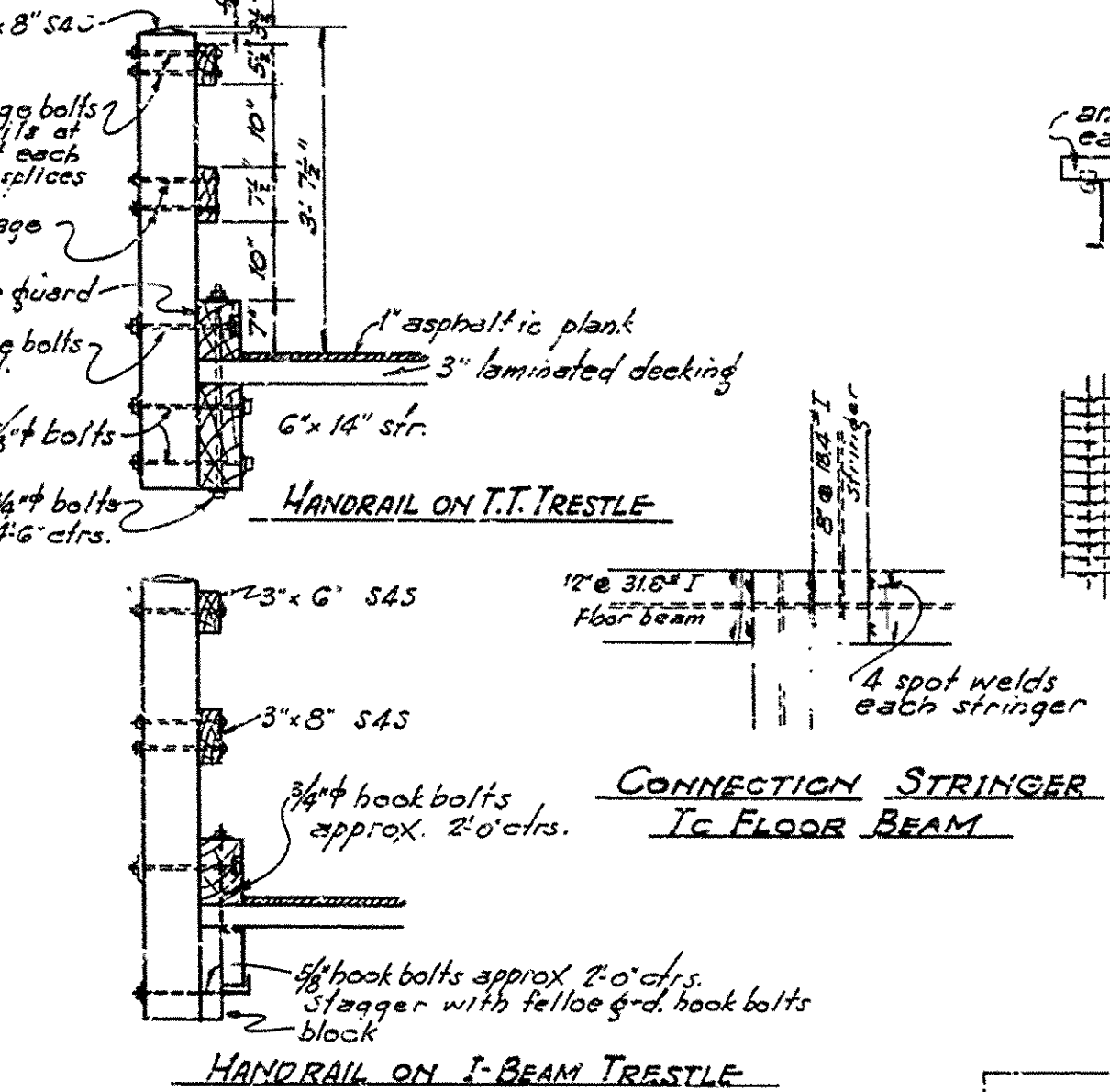
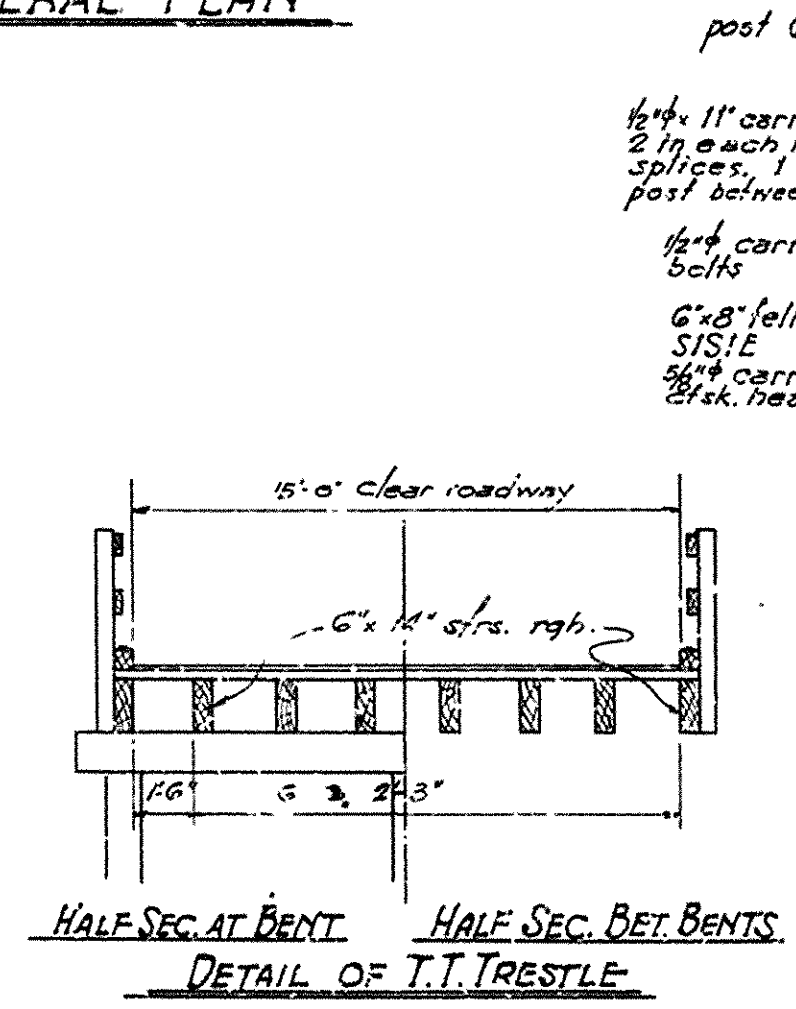
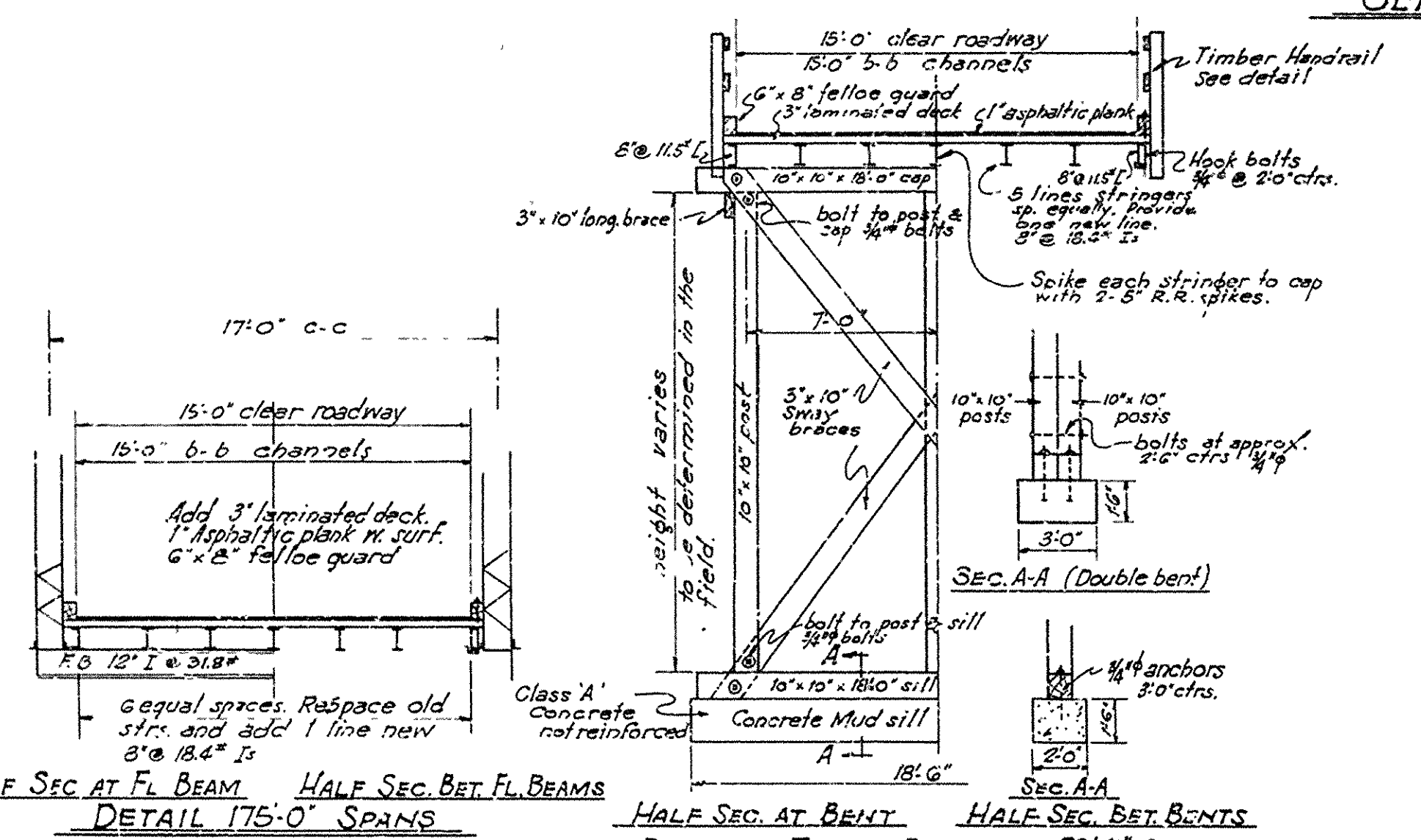
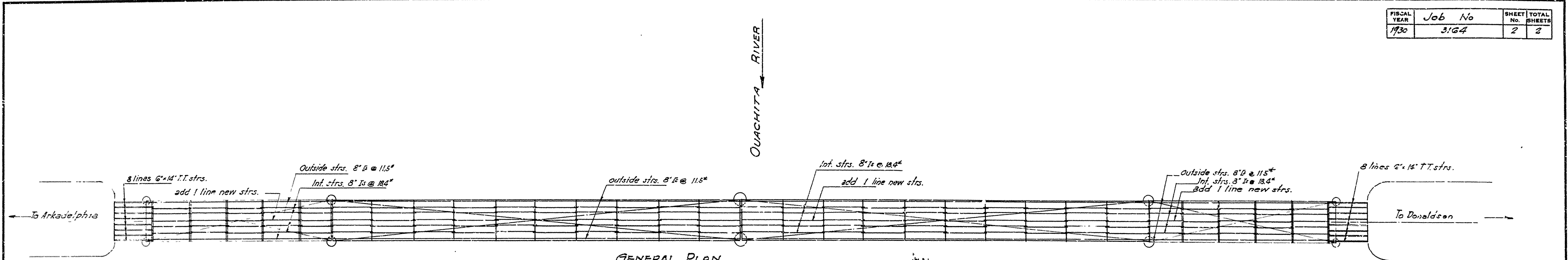
APPROVED
 STATE HIGHWAY ENGINEER

N.B. Lane
 BRIDGE ENGINEER

BRIDGES No. 1412

DRAWING No. 3017

FISCAL YEAR	Job No	SHEET NO.	TOTAL SHEETS
1930	3164	2	2



NOTE: Measurement for payment of 3" laminated decking shall be computed at 48 (forty eight) Ft. B.M. per lin. ft. of bridge. Ends of decking to be flush.

DETAILS OF REPAIRS TO
 BRIDGE OVER OUACHITA RIVER
 AT ARKADELPHIA, ARK.
 CLARK COUNTY
 ROUTE 67 SEC. 6
 ARKANSAS STATE HIGHWAY COMMISSION
 LITTLE ROCK, ARK.
 Drawn By: EAW Date: 6-14-31
 Traced By: EAW Date: 6-15-31
 Checked By: Date: _____
 Bridge No. 1412 DRAWING NO. 3018

M.B. Lewis
 BRIDGE ENGINEER