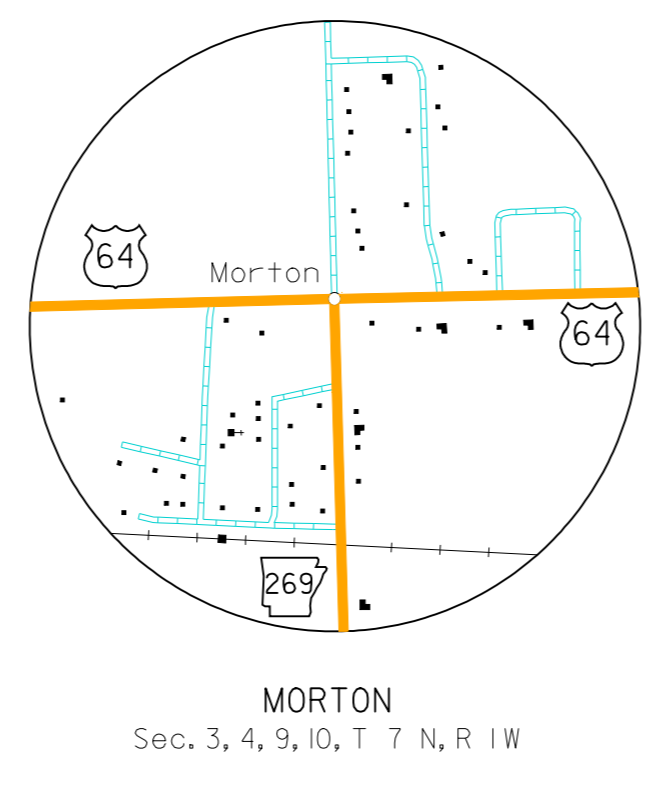
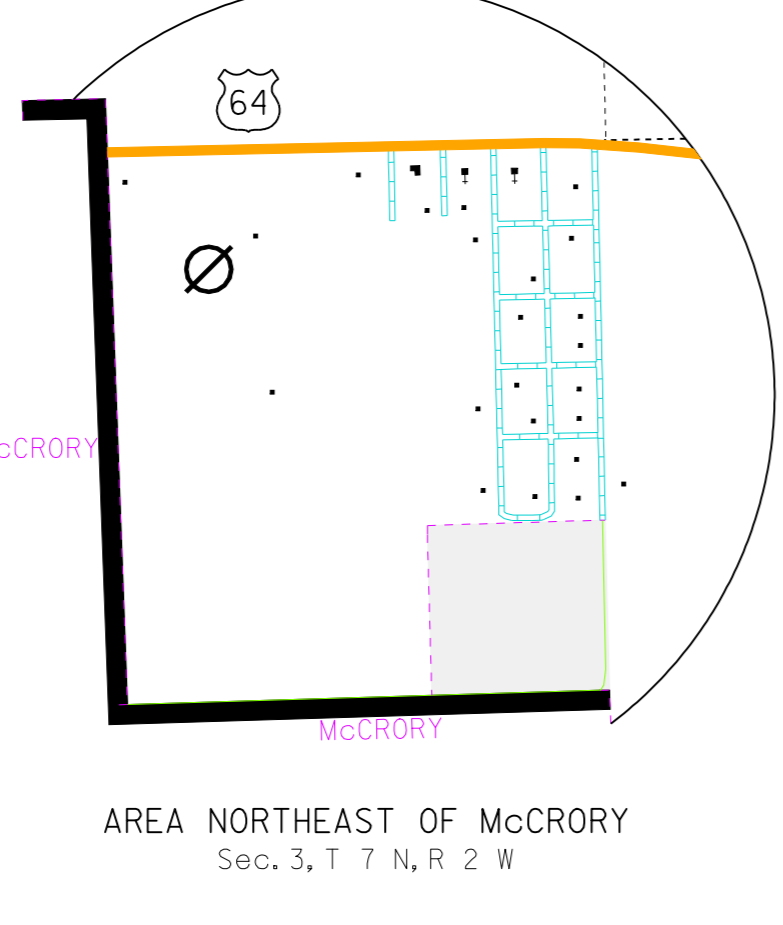
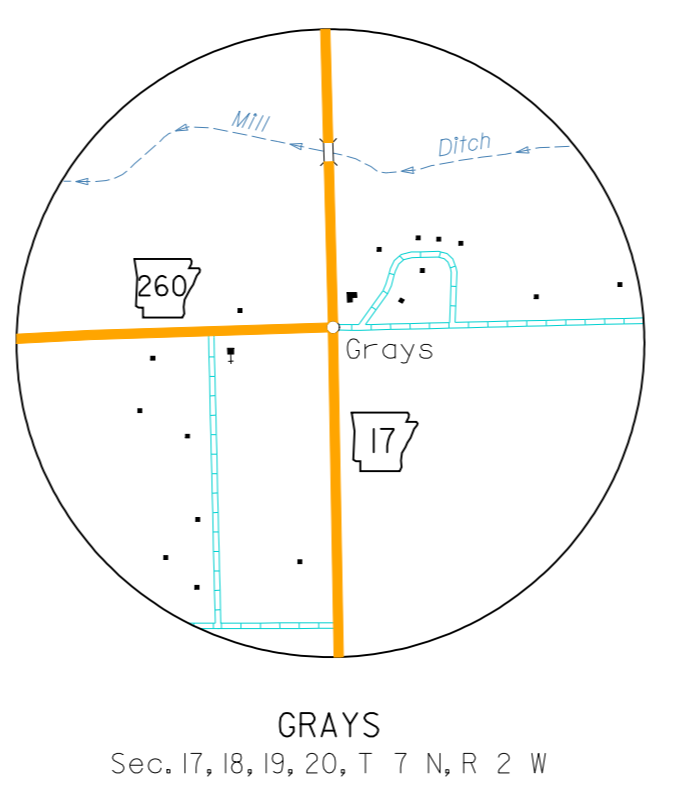
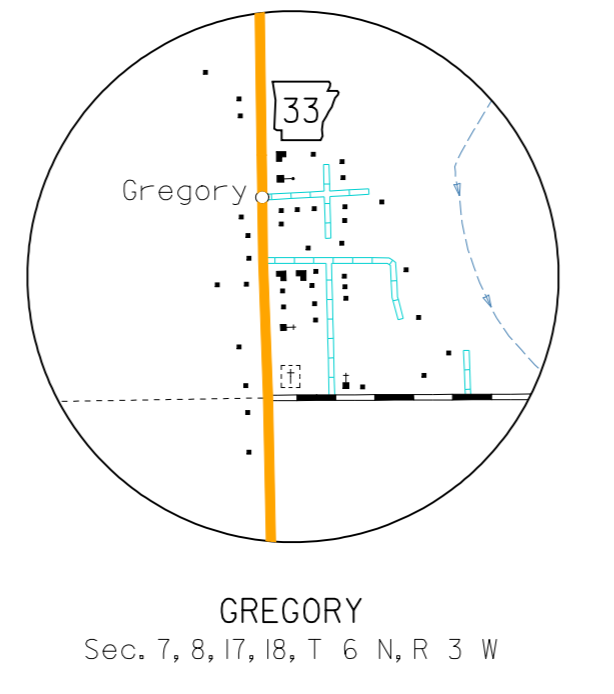
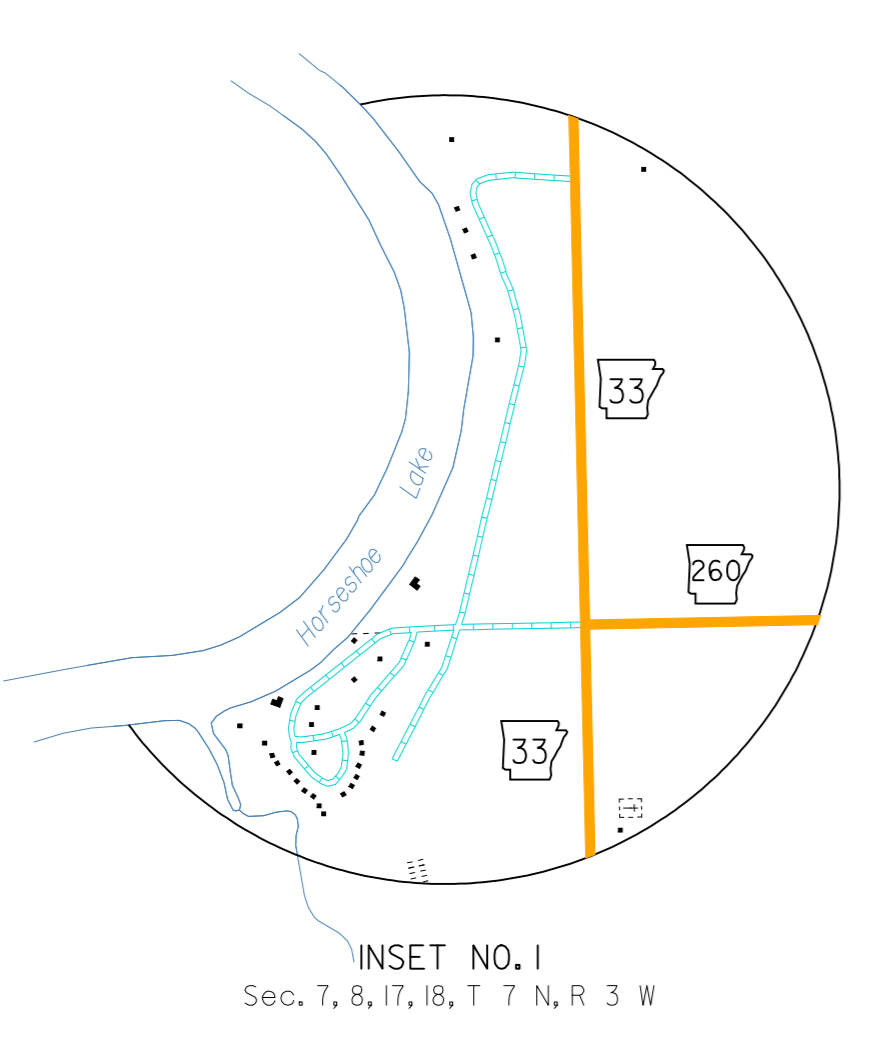


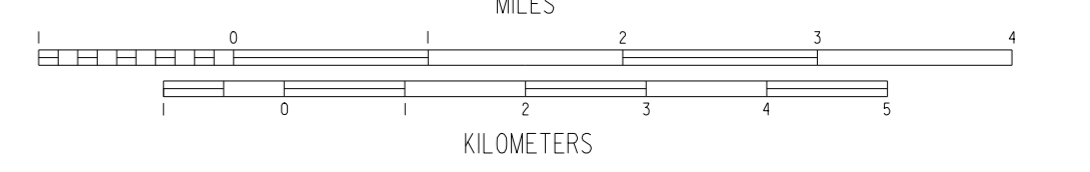
- LEGEND**
- COUNTY BOUNDARY
 - SECTION LINE
 - U.S. LAND TOWNSHIP LINE
 - PARK OR RESERVATION BOUNDARY
 - PAVED STATE OR U.S. HIGHWAY
 - 64 U.S. NUMBERED HIGHWAY
 - 33 STATE HIGHWAY
 - PAVED LOCAL ROAD
 - GRAVEL LOCAL ROAD
 - GRADED & DRAINED LOCAL ROAD
 - UNIMPROVED LOCAL ROAD
 - RAILROAD (BY NUMBER OF TRACKS LISTED BY TRACKS OVER THE CORNER)
 - RAILROAD STATION
 - GRADE CROSSING
 - OVERPASS
 - UNDERPASS
 - HIGHWAY BRIDGE (100 FEET OR MORE IN LENGTH)
 - LEVEE OR DIKE
 - 0.6 MILEAGE BETWEEN POINTS
 - LAKE, RESERVOIR OR POND
 - LAKE, RESERVOIR OR POND WITH DAM
 - MARSH OR SWAMP
 - WIDE RIVER OR STREAM
 - DOCK, PIER OR LANDING
 - NAVIGABLE STREAM
 - SMALL STREAM
 - DRAINAGE DITCH
 - CORPORATE LIMITS AND ROADS THROUGH TOWN
 - COUNTY SEAT
 - OTHER CITIES AND TOWNS
 - MUNICIPAL AIRPORT
 - PRIVATE AIRFIELD
 - FARM UNIT OR DWELLING
 - GROUP OF CLOSELY SPACED DWELLINGS (4-8 NO. HOUSE SHOWN)
 - CHURCH OR OTHER RELIGIOUS INSTITUTION
 - SCHOOL
 - POST OFFICE
 - POST OFFICE AND BUSINESS
 - CEMETERY
 - CHURCH WITH CEMETERY ADJACENT
 - BUSINESS ESTABLISHMENT
 - FACTORY OR INDUSTRIAL PLANT
 - POWER PLANT
 - POWER SUBSTATION
 - CAMP OR LODGE
 - SMALL PARK (OR STATE-OR-COUNTY-MANAGED, BY NUMBER OF TREES LISTED)
 - WATER SUPPLY STANDPIPE OR TANK
 - SEWAGE DISPOSAL PLANT
 - PICNIC GROUND

NOTE: Enlargements of all congested areas are five times map scale unless otherwise noted.
 Individual maps are available for all active incorporated cities.
 Area: 594 Square Miles
 Population: 260,200 Census
 Map Issued 9-27-00, replaces map issued 8-92
 Field Inventory 918
 Map revisions made from aerial photographs taken 1-8-99
 Map completion completed 9-10-00
 County map produced using Computer Assisted Cartography.



GENERAL HIGHWAY MAP
WOODRUFF COUNTY
 ARKANSAS

PREPARED BY
 ARKANSAS STATE HIGHWAY AND TRANSPORTATION DEPARTMENT
 PLANNING AND RESEARCH DIVISION
 IN COOPERATION WITH
 U.S. DEPARTMENT OF TRANSPORTATION
 FEDERAL HIGHWAY ADMINISTRATION
 SCALE 1:62,500



Copies of this map are available at a nominal fee from the Arkansas State Highway and Transportation Department, P.O. Box 2281 Little Rock, Ark. 72203

