

1.5-

ARKANSAS HIGHWAY DEPARTMENT
BRIDGE DESIGN DIVISION
CALCULATIONS FOR

MADE BY MEL DATE 2-7-81 SHEET NO. _____
CHECKED BY _____ DATE _____ JOB NO. _____
BRIDGE NO. _____

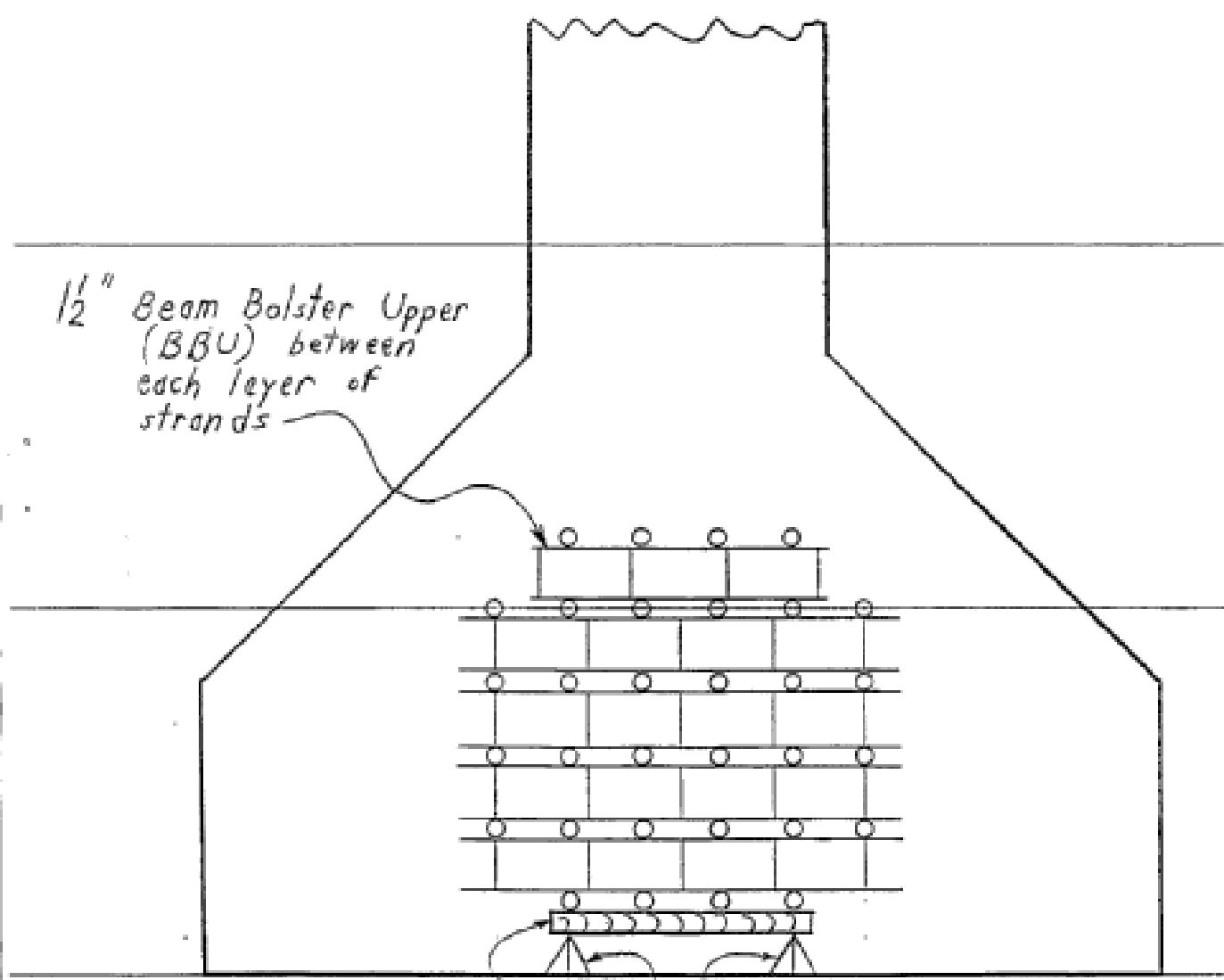
2-2-81

After a discussion with Wayne Casteel and Mr. Pinkerton, the attached system of strand supports was required to be on the shop drawings for job R70070.

The #5 rebar was used because the O.D. of a #5 is $\frac{11}{16}$ " when the deformations are included. When the #5 bar is longer than 12" use 3 dipped bar chairs.

ARKANSAS HIGHWAY DEPARTMENT
BRIDGE DESIGN DIVISION
CALCULATIONS FOR Strand Supports

MADE BY MPC DATE 2-7-90 SHEET NO. 1/2
CHECKED BY _____ DATE _____ JOB NO. R70070
BRIDGE NO. _____



$\frac{1}{2}$ " Beam Bolster Upper (BBU) between each layer of strands

#5 rebar

1" Dipped Bar Chair (BC)

Plastic chairs are not permitted.

END VIEW

00315-

ARKANSAS HIGHWAY DEPARTMENT
BRIDGE DESIGN DIVISION
CALCULATIONS FOR

Strand Supports

MADE BY *MEC*

DATE *2-7-91*

SHEET NO. *2/2*

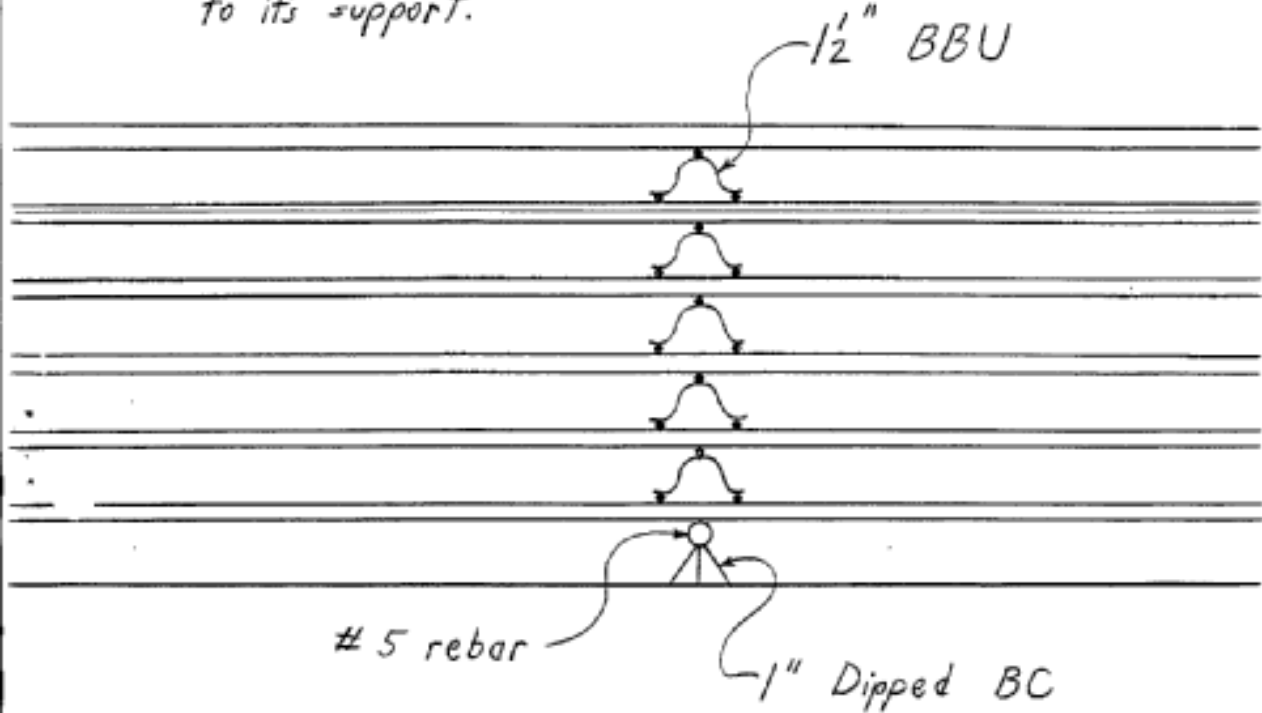
CHECKED BY _____

DATE _____

JOB NO. *R70070*

BRIDGE NO. *6304*

The BC and BBU support system shall be used at 10 ft. intervals or less along the full length of the girder. Each strand shall be tied with wire to its support.



SIDE VIEW

Additional supports may be required, as determined by the inspector, to maintain proper spacing of the strands.