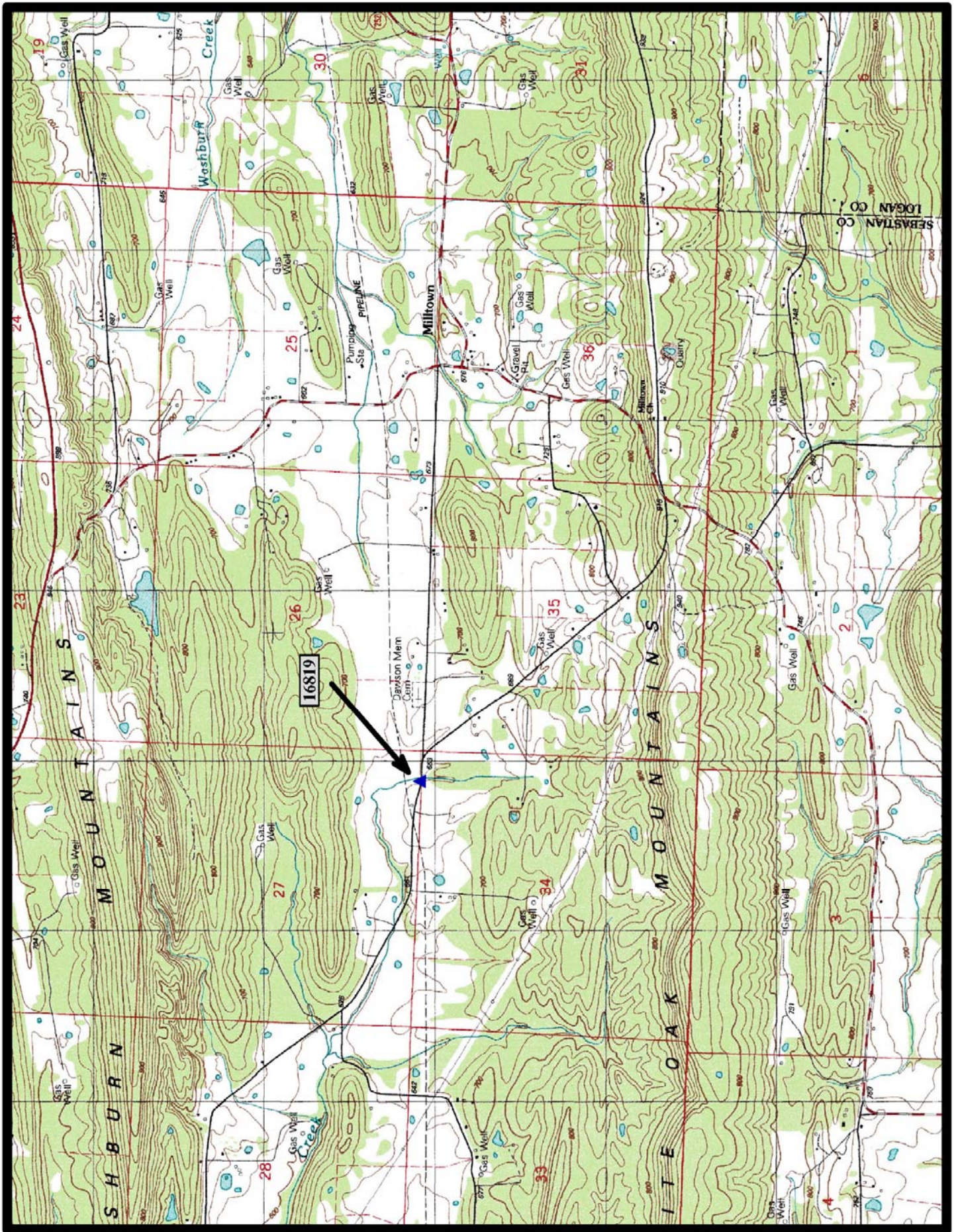




HISTORIC BRIDGE #16819
COUNTY ROAD 77
SEBASTIAN COUNTY
MASONRY ARCH
CROSSES - VACHE GRASSE CREEK
DATE OF CONSTRUCTION – 1940
BUILDER - WORKS PROGRESS ADMINISTRATION (WPA)
HISTORIC BRIDGE INVENTORY DATE - 1995
SHPO NUMBER – SB0404
HAER NUMBER - AR-55
DATE LISTED ON NATIONAL REGISTER - 4/9/1990
LAT./LONG. 35:09:31.49, -94:10:33.97

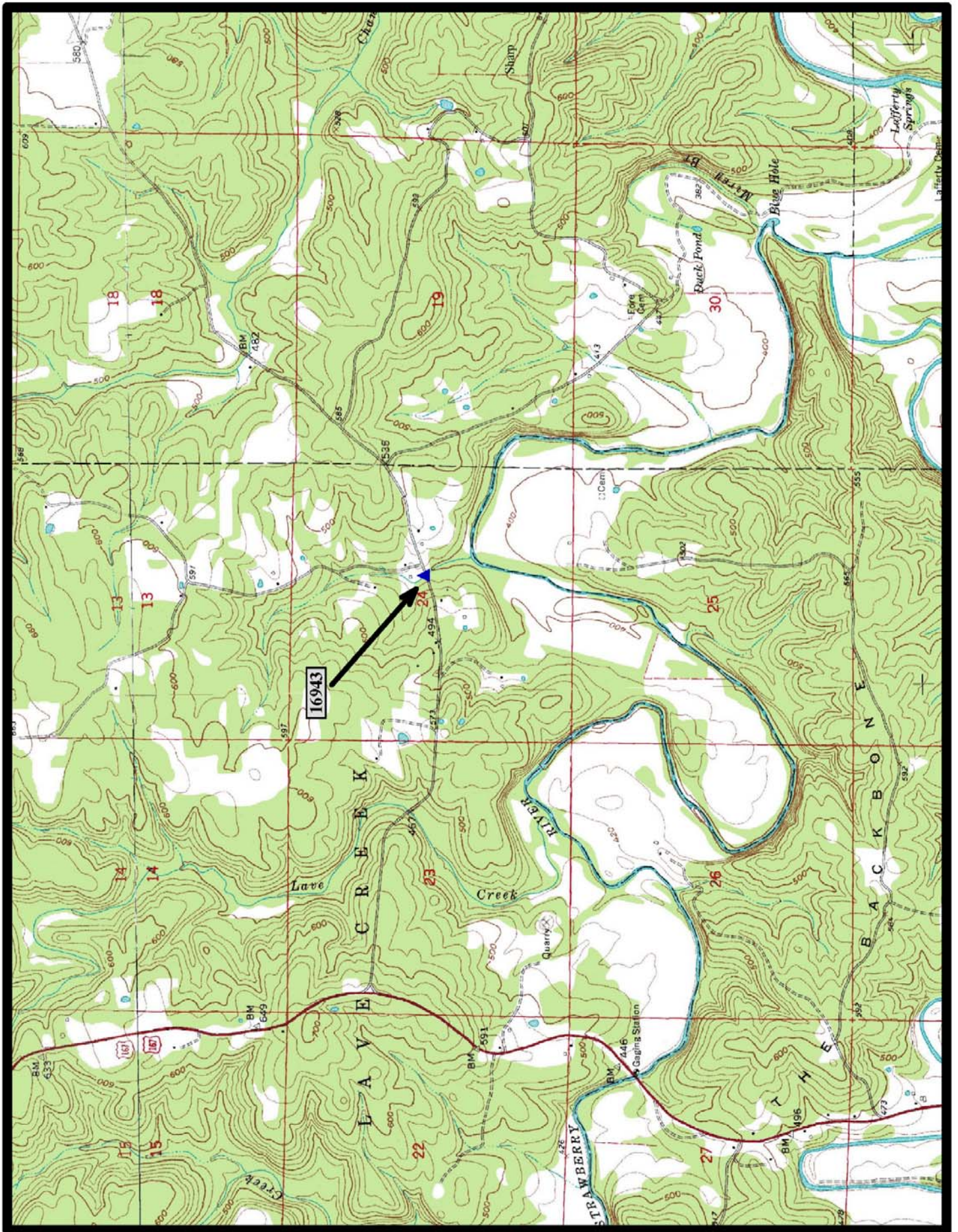


↑
North

Burnville 7.5 min. Quad



HISTORIC BRIDGE #16943
SIMSTOWN ROAD (Co. Rd. 44)
SHARP COUNTY
MASONRY ARCH
CROSSES - UNNAMED CREEK
DATE OF CONSTRUCTION – 1935
BUILDER - CIVILIAN CONSERVATION CORPS (CCC)
HISTORIC BRIDGE INVENTORY DATE - 2005
SHPO NUMBER –SH0154
HAER NUMBER -
DATE LISTED ON NATIONAL REGISTER -
LAT./LONG. 36:06:34.40, -91:34:32.89

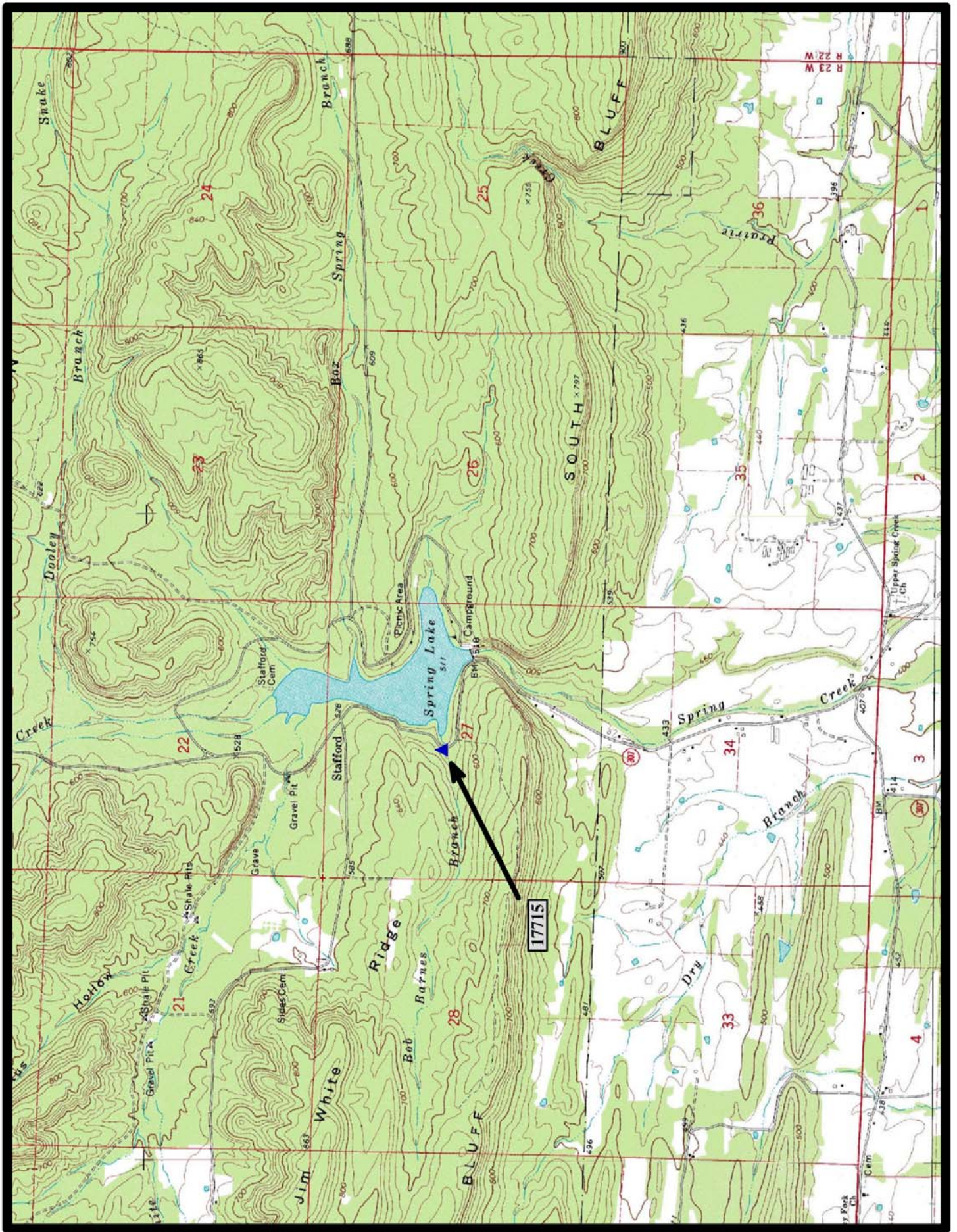


North

Evening Shade 7.5 min. Quad



HISTORIC BRIDGE #17715
COUNTY ROAD 36
YELL COUNTY
MASONRY ARCH
CROSSES - BOB BARNES BRANCH
DATE OF CONSTRUCTION – 1936
BUILDER - WORKS PROGRESS ADMINISTRATION (WPA)
HISTORIC BRIDGE INVENTORY DATE - 1987
SHPO NUMBER – YE0039
HAER NUMBER - AR-36
DATE LISTED ON NATIONAL REGISTER - 6/21/1990
LAT./LONG. 35:09:03.66, -93:25:54.49

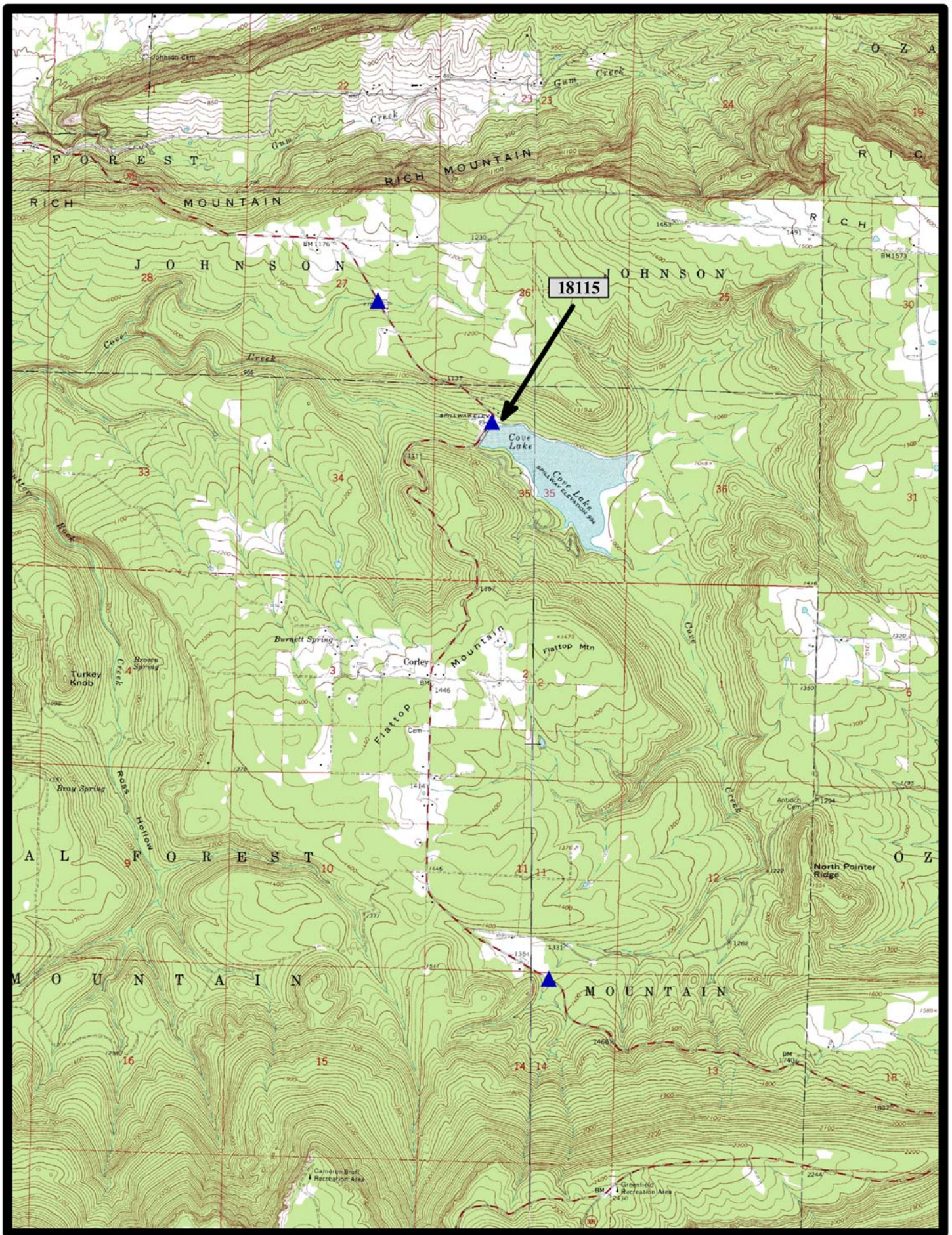


↑
North

Chickalah Mountain West 7.5 min. Quad



HISTORIC BRIDGE #18115
STATE HIGHWAY 309
LOGAN COUNTY
MASONRY ARCH
CROSSES - COVE CREEK
DATE OF CONSTRUCTION – 1936
BUILDER - WORKS PROGRESS ADMINISTRATION (WPA)
HISTORIC BRIDGE INVENTORY DATE - 1995
SHPO NUMBER – LO0057
HAER NUMBER - AR-83
DATE LISTED ON NATIONAL REGISTER - 9/11/1995
LAT./LONG. 35:13:58.33, -93:37:44.82

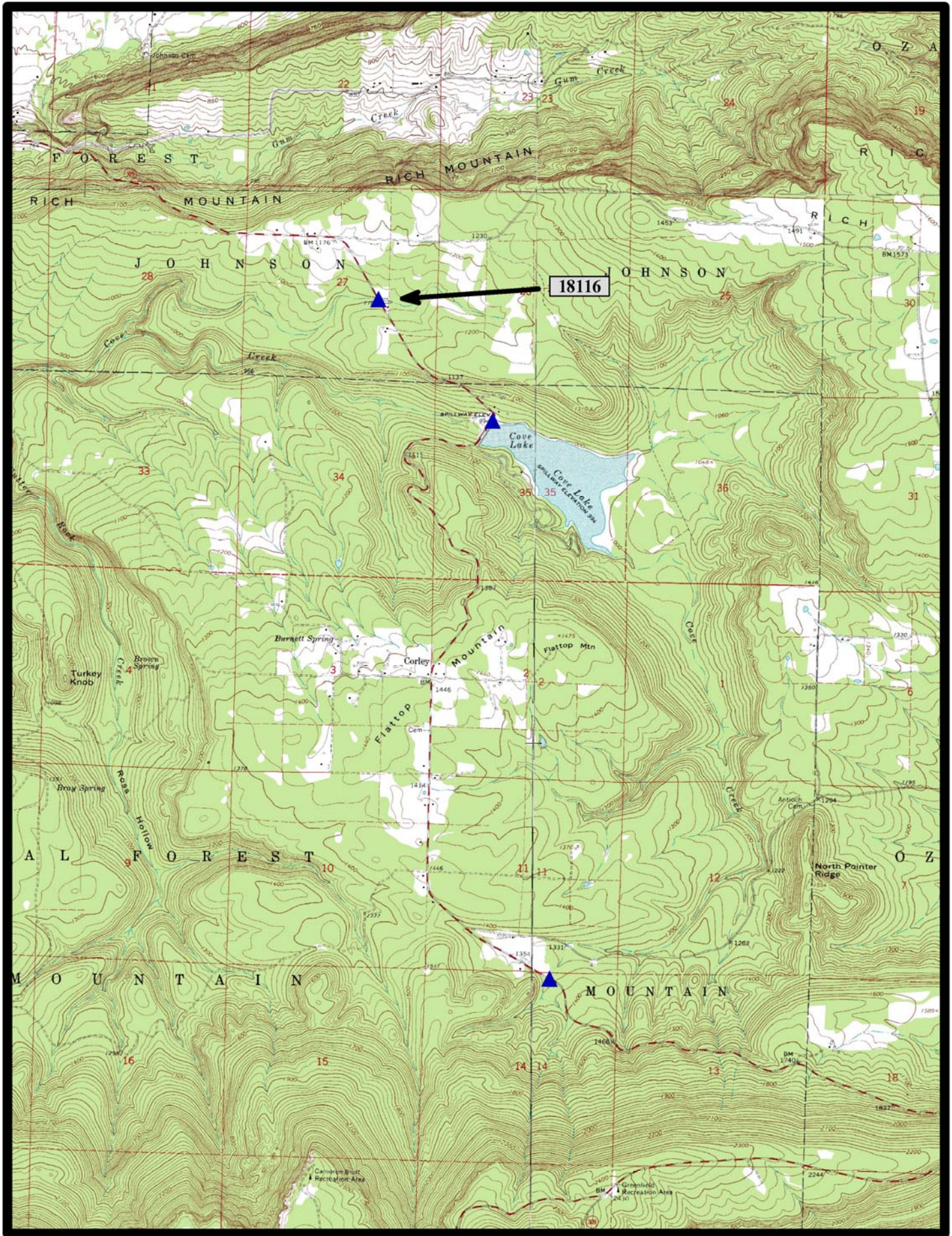


↑
North

Blue Mountain 7.5 min. Quad



HISTORIC BRIDGE #18116
STATE HIGHWAY 309
LOGAN COUNTY
MASONRY ARCH
CROSSES - TRIBUTARY OF COVE CREEK
DATE OF CONSTRUCTION - 1936
BUILDER - WORKS PROGRESS ADMINISTRATION (WPA)
HISTORIC BRIDGE INVENTORY DATE - 1995
SHPO NUMBER - LO0051
HAER NUMBER - AR-75
DATE LISTED ON NATIONAL REGISTER - 5/26/1995
LAT./LONG. 35:14:31.15, -93:38:22.85



Blue Mountain 7.5 min. Quad