

DATE REVISION	DATE FILMED	DATE REVISION	DATE FILMED	FED. AID PROJ. NO.	STATE	FED. AID PROJ. NO.	SHEET NO.	TOTAL SHEETS
				6	ARK.			
				JOB NO.	061505		1	56

① I-30 - I-630 BRIDGE PAINTING (I-430) (S)

**ARKANSAS STATE HIGHWAY AND TRANSPORTATION DEPARTMENT
MAINTENANCE PLANS**

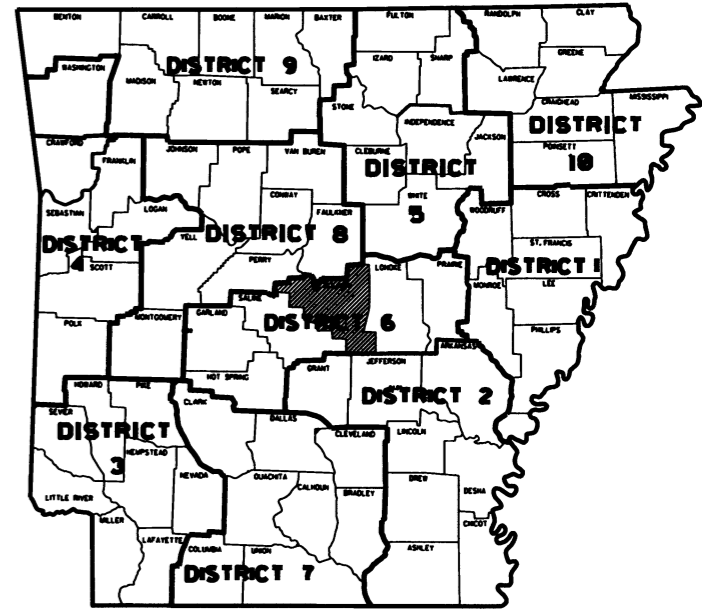
I-30 - I-630 BRIDGE PAINTING (I-430) (S)

**PULASKI COUNTY
ROUTE 430 SECTION 21
FEDERAL AID PROJ. NHPP-0060(52)
JOB 061505**



SITE LOCATIONS

VICINITY MAP



ARKANSAS HIGHWAY DIST. 6

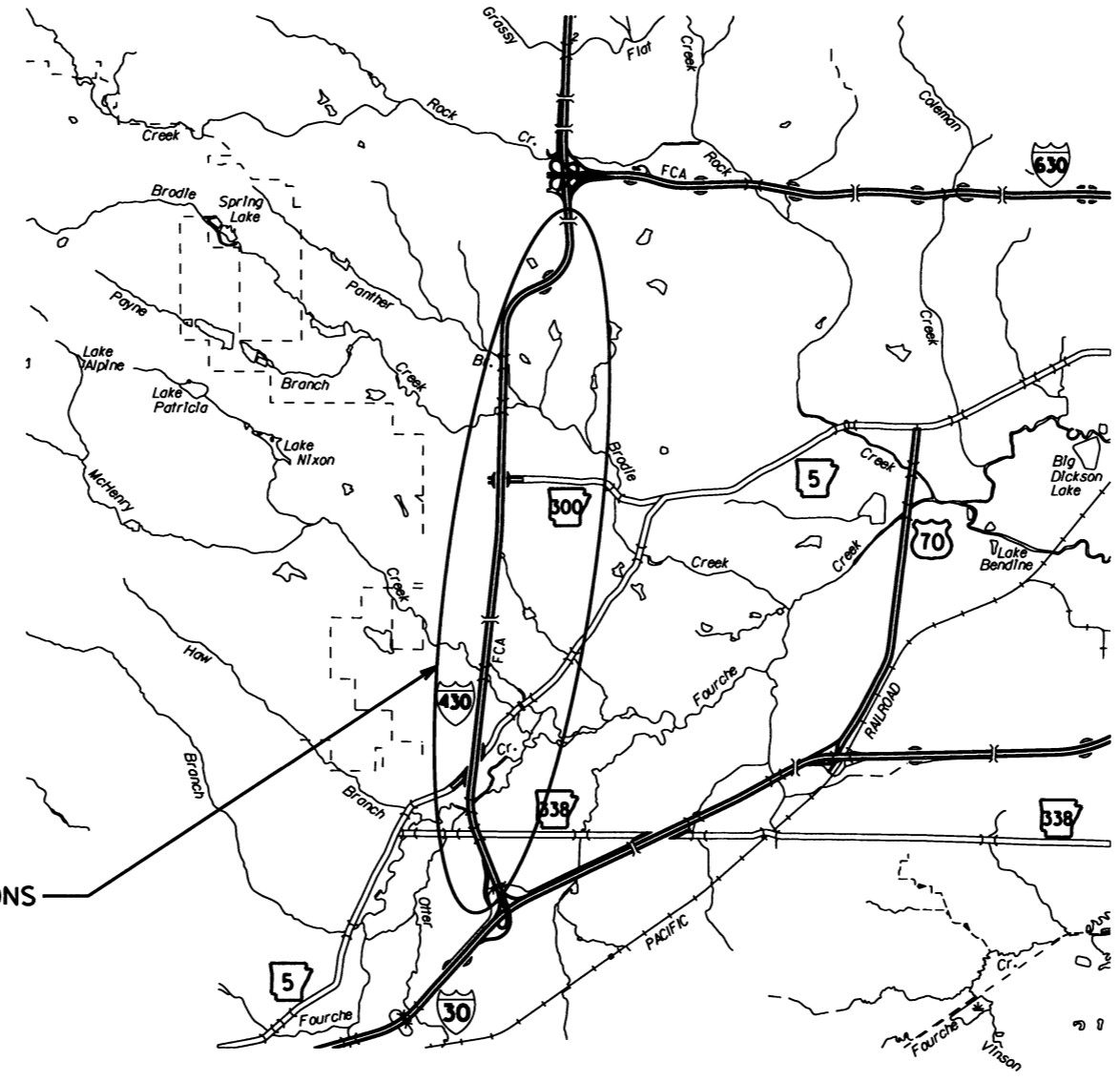


NOT TO SCALE

BRIDGE DATA:

- 1 BRIDGE NO. 05504
I-30 WB FRONTAGE
270'-0" CONT. COMPOSITE WELDED PL GIRDER UNIT
WITH 35'-6" CLEAR ROADWAY.
LAT. 34° 39' 53" LONG. 92° 24' 11"
- 2 BRIDGE NO. 05308
SH 5, SEC. 09, LM 3.28
402'-2 3/8" CONT. COMPOSITE GIRDER UNIT
WITH 63' CLEAR ROADWAY.
LAT. 34° 40' 43" LONG. 92° 24' 26"
- 3 BRIDGE NO. 05309
DAVID O. DODD ROAD
284'-4" CONT. WELDED PLATE GIRDER UNIT
WITH 31' CLEAR ROADWAY.
LAT. 34° 41' 46" LONG. 92° 24' 15"
- 4 BRIDGE NO. A5310
I-430 NB, SEC. 21, LM 3.56
205' CONT. COMPOSITE I-BEAM UNIT
WITH 51' CLEAR ROADWAY.
LAT. 34° 42' 45" LONG. 92° 24' 06"
- 5 BRIDGE NO. B5310
I-430 SB, SEC. 21, LM 3.56
205' CONT. COMPOSITE I-BEAM UNIT
WITH 51' CLEAR ROADWAY.
LAT. 34° 42' 45" LONG. 92° 24' 07"
- 6 BRIDGE NO. A5311
I-430 NB, SEC. 21, LM 4.15
249' CONT. COMPOSITE I-BEAM SPANS
WITH 51' CLEAR ROADWAY.
LAT. 34° 43' 16" LONG. 92° 24' 4"
- 7 BRIDGE NO. B5311
I-430 SB, SEC. 21, LM 4.15
249' CONT. COMPOSITE I-BEAM SPANS
WITH 51' CLEAR ROADWAY.
LAT. 34° 43' 16" LONG. 92° 24' 3"
- 8 BRIDGE NO. 05312
SHACKLEFORD ROAD
343' CONT. COMPOSITE GIRDER SPANS
WITH 44' CLEAR ROADWAY.
LAT. 34° 44' 11" LONG. 92° 23' 40"
- 9 BRIDGE NO. 05313
KANIS ROAD
314' CONT. COMPOSITE GIRDER SPANS
WITH 44' CLEAR ROADWAY.
LAT. 36° 21' 54" LONG. 94° 33' 05"

SITE LOCATIONS



DATE REVISED	DATE FILMED	DATE REVISED	DATE FILMED	FED. PROJ. DIST. NO.	STATE	FED. AID PROJ. NO.	SHEET NO.	TOTAL SHEETS
				6	ARK.			
				JOB NO.	06305		2	36
INDEX OF SHEETS & GOVERNING SPECS.								

INDEX OF SHEETS

SHEET NO.	TITLE	DRAWING NO.	DATE
------------------	--------------	--------------------	-------------

1.	TITLE SHEET		
2.	INDEX OF SHEETS AND GOVERNING SPECIFICATIONS		
3.-9.	MAINTENANCE OF TRAFFIC		
10.	QUANTITIES AND GENERAL NOTES		
11.	SUMMARY OF QUANTITIES AND REVISIONS		
12.	SITE LOCATIONS MAP		
13.	BRIDGE PICTURES (SHEET 1 OF 2)		
14.	BRIDGE PICTURES (SHEET 2 OF 2)		
15.	LAYOUT OF BRIDGE NO. 05504 - FOR INFORMATION ONLY		
16.	PL. GIRDER UNIT DETAILS - BRIDGE NO. 05504 - FOR INFORMATION ONLY		
17.	PL. GIRDER UNIT DETAILS - BRIDGE NO. 05504 - FOR INFORMATION ONLY		
18.	PL. GIRDER UNIT DETAILS - BRIDGE NO. 05504 - FOR INFORMATION ONLY		
19.	PL. GIRDER UNIT DETAILS - BRIDGE NO. 05504 - FOR INFORMATION ONLY		
20.	PL. GIRDER UNIT DETAILS - BRIDGE NO. 05504 - FOR INFORMATION ONLY		
21.	PL. GIRDER UNIT DETAILS - BRIDGE NO. 05504 - FOR INFORMATION ONLY		
22.	LAYOUT OF BRIDGE NO. 05308 - FOR INFORMATION ONLY		
23.	PL. GIRDER UNIT DETAILS - BRIDGE NO. 05308 - FOR INFORMATION ONLY		
24.	PL. GIRDER UNIT DETAILS - BRIDGE NO. 05308 - FOR INFORMATION ONLY		
25.	PL. GIRDER UNIT DETAILS - BRIDGE NO. 05308 - FOR INFORMATION ONLY		
26.	PL. GIRDER UNIT DETAILS - BRIDGE NO. 05308 - FOR INFORMATION ONLY		
27.	LAYOUT OF BRIDGE NO. 05309 - FOR INFORMATION ONLY		
28.	PL. GIRDER UNIT DETAILS - BRIDGE NO. 05309 - FOR INFORMATION ONLY		
29.	PL. GIRDER UNIT DETAILS - BRIDGE NO. 05309 - FOR INFORMATION ONLY		
30.	PL. GIRDER UNIT DETAILS - BRIDGE NO. 05309 - FOR INFORMATION ONLY		
31.	PL. GIRDER UNIT DETAILS - BRIDGE NO. 05309 - FOR INFORMATION ONLY		
32.	LAYOUT OF BRIDGE NOS. A&B5310 - FOR INFORMATION ONLY		
33.	STEEL DETAILS - BRIDGE NOS. A&B5310 - FOR INFORMATION ONLY		
34.	STEEL DETAILS - BRIDGE NOS. A&B5310 - FOR INFORMATION ONLY		
35.	STEEL DETAILS - BRIDGE NOS. A&B5310 - FOR INFORMATION ONLY		
36.	STEEL DETAILS - BRIDGE NOS. A&B5310 - FOR INFORMATION ONLY		
37.	LAYOUT OF BRIDGE NOS. A&B5311 - FOR INFORMATION ONLY		
38.	STEEL DETAILS - BRIDGE NOS. A&B5311 - FOR INFORMATION ONLY		
39.	STEEL DETAILS - BRIDGE NOS. A&B5311 - FOR INFORMATION ONLY		
40.	STEEL DETAILS - BRIDGE NOS. A&B5311 - FOR INFORMATION ONLY		
41.	STEEL DETAILS - BRIDGE NOS. A&B5311 - FOR INFORMATION ONLY		
42.	LAYOUT OF BRIDGE NO. 05312 - FOR INFORMATION ONLY		
43.	STEEL DETAILS - BRIDGE NOS. 05312 - FOR INFORMATION ONLY		
44.	STEEL DETAILS - BRIDGE NOS. 05312 - FOR INFORMATION ONLY		
45.	STEEL DETAILS - BRIDGE NOS. 05312 - FOR INFORMATION ONLY		
46.	STEEL DETAILS - BRIDGE NOS. 05312 - FOR INFORMATION ONLY		
47.	PL GIRDER UNIT DETAILS - BRIDGE NO. 5312 - FOR INFORMATION ONLY		
48.	PL GIRDER UNIT DETAILS - BRIDGE NO. 5312 - FOR INFORMATION ONLY		
49.	LAYOUT OF BRIDGE NO. 05313 - FOR INFORMATION ONLY		
50.	STEEL DETAILS - BRIDGE NOS. 05313 - FOR INFORMATION ONLY		
51.	STEEL DETAILS - BRIDGE NOS. 05313 - FOR INFORMATION ONLY		
52.	STEEL DETAILS - BRIDGE NOS. 05313 - FOR INFORMATION ONLY		
53.	STEEL DETAILS - BRIDGE NOS. 05313 - FOR INFORMATION ONLY		
54.	STANDARD TRAFFIC CONTROLS FOR HIGHWAY CONSTRUCTION	TC-1	9-2-15
55.	STANDARD TRAFFIC CONTROLS FOR HIGHWAY CONSTRUCTION	TC-2	9-2-15
56.	STANDARD TRAFFIC CONTROLS FOR HIGHWAY CONSTRUCTION	TC-3	9-2-15

GOVERNING SPECIFICATIONS

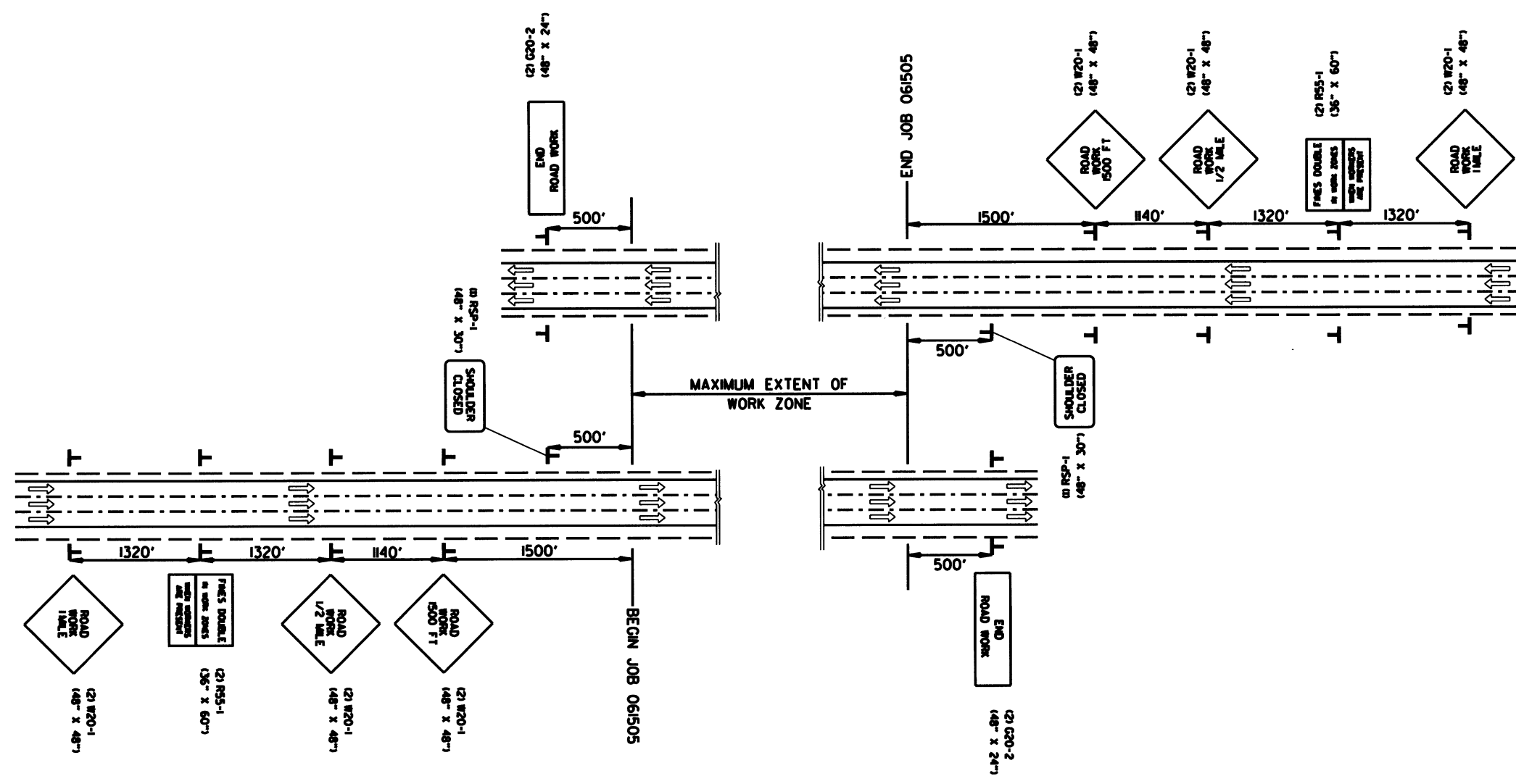
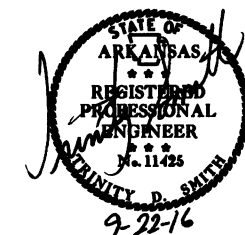
ARKANSAS STATE HIGHWAY COMMISSION STANDARD SPECIFICATIONS FOR HIGHWAY CONSTRUCTION, EDITION OF 2014, AND THE FOLLOWING SPECIAL PROVISIONS AND SUPPLEMENTAL SPECIFICATIONS:

NUMBER	TITLE
ERRATA	ERRATA FOR THE BOOK OF STANDARD SPECIFICATIONS
FHWA-1273	REQUIRED CONTRACT PROVISIONS FEDERAL-AID CONSTRUCTION CONTRACTS
FHWA-1273	SUPPLEMENT - EQUAL EMPLOYMENT OPPORTUNITY - NOTICE TO CONTRACTORS
FHWA-1273	SUPPLEMENT - SPECIFIC EQUAL EMPLOYMENT OPPORTUNITY RESPONSIBILITIES (23 U.S.C. 140)
FHWA-1273	SUPPLEMENT - EQUAL EMPLOYMENT OPPORTUNITY - GOALS AND TIMETABLES
FHWA-1273	SUPPLEMENT - EQUAL EMPLOYMENT OPPORTUNITY - FEDERAL STANDARDS
FHWA-1273	SUPPLEMENT - POSTERS AND NOTICES REQUIRED FOR FEDERAL-AID PROJECTS
FHWA-1273	SUPPLEMENT - WAGE RATE DETERMINATION
100-3	CONTRACTOR'S LICENSE
102-2	ISSUANCE OF PROPOSALS
108-1	LIQUIDATED DAMAGES
108-2	WORK ALLOWED PRIOR TO ISSUANCE OF WORK ORDER
604-1	RETROREFLECTIVE SHEETING FOR TRAFFIC CONTROL DEVICES IN CONSTRUCTION ZONES
JOB 061505	BIDDING REQUIREMENTS AND CONDITIONS
JOB 061505	CARGO PREFERENCE ACT REQUIREMENTS
JOB 061505	CONTAINMENT SYSTEM
JOB 061505	CONTRACTOR CERTIFICATION
JOB 061505	DOCUMENTATION OF PAYMENTS MADE TO DISADVANTAGED BUSINESS ENTERPRISES
JOB 061505	INSPECTOR'S PERSONAL PROTECTION CLOTHING
JOB 061505	MANDATORY ELECTRONIC CONTRACT
JOB 061505	MANDATORY ELECTRONIC DOCUMENT SUBMITTAL
JOB 061505	NESTING SITES OF MIGRATORY BIRDS
JOB 061505	PAINT CONTRACTOR LABEL
JOB 061505	SPECIAL MAINTENANCE OF TRAFFIC REQUIREMENTS
JOB 061505	SPECIAL SAFETY REQUIREMENTS FOR BRIDGES



DATE REVISION	DATE PLACED	DATE REVISION	DATE PLACED	FEDERAL DIST. NO.	STATE	FEDERAL PROJ. NO.	SHEET NO.	TOTAL SHEETS
				6	ARK.		3	56
				JOB NO.		061505		

② MAINTENANCE OF TRAFFIC



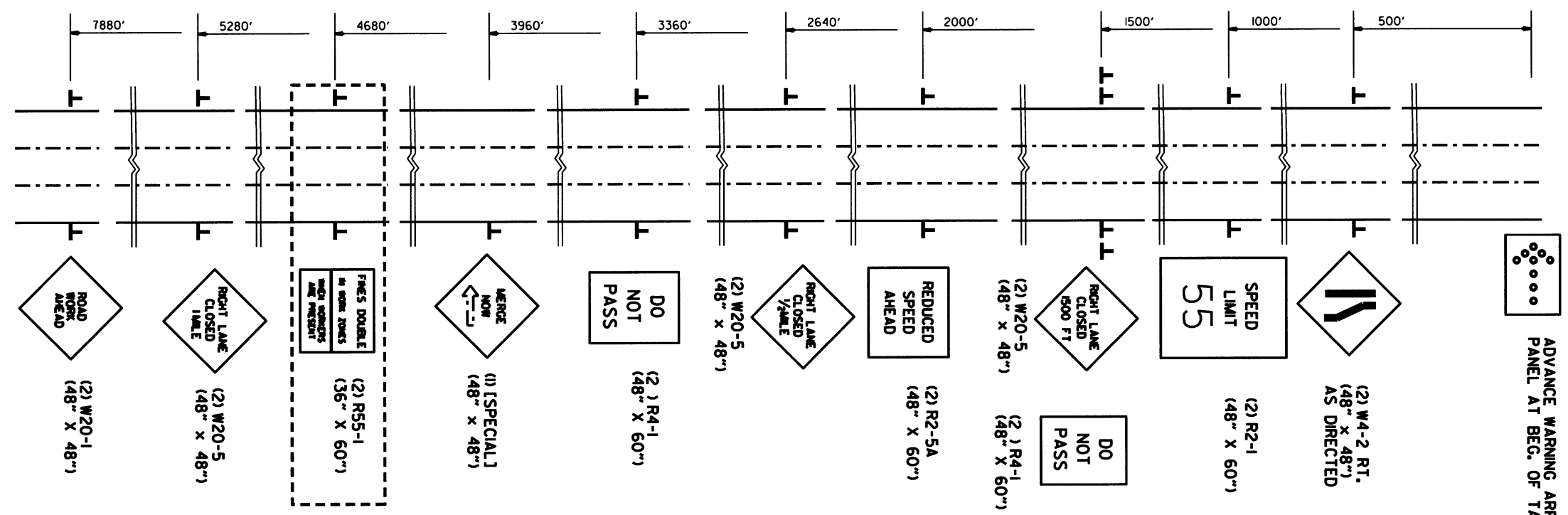
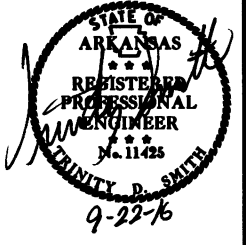
PORTABLE CHANGEABLE MESSAGE SIGN PLACED AS DIRECTED BY THE ENGINEER

PORTABLE CHANGEABLE MESSAGE SIGN PLACED AS DIRECTED BY THE ENGINEER

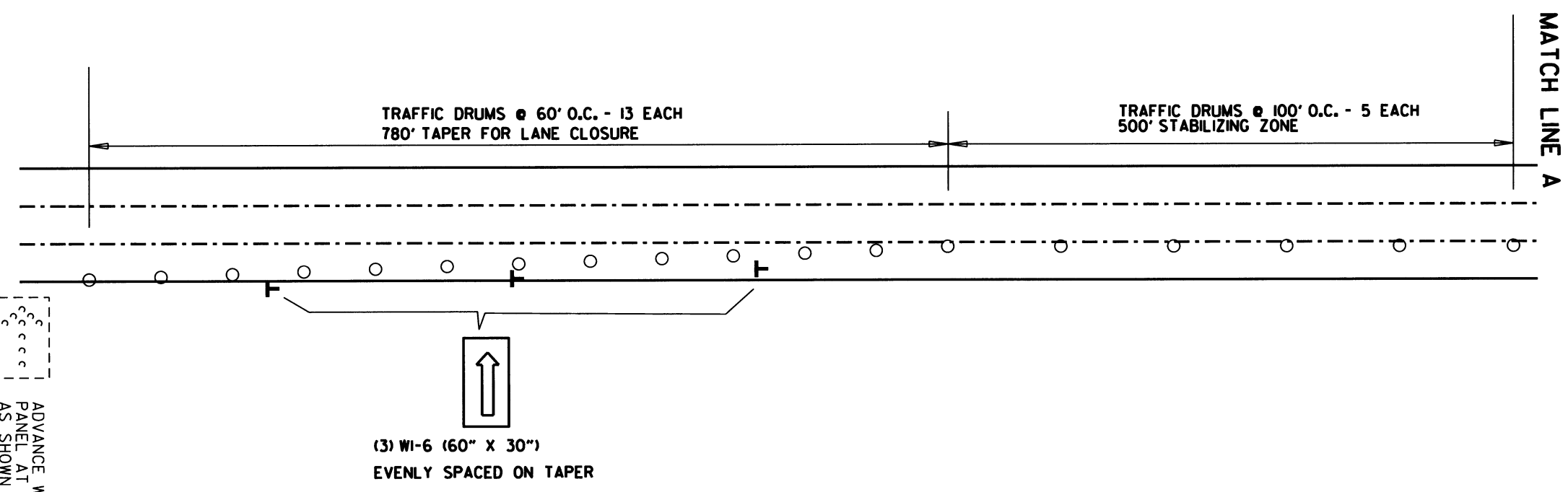
ADVANCE WARNING SIGNS AT BEGINNING AND END OF JOB ALL STAGES

DATE REVISION	DATE PLACED	DATE REVISION	DATE PLACED	FED. DIST. NO.	STATE	FED. PROJ. NO.	SHEET NO.	TOTAL SHEETS
				6	ARK.			
				JOB NO.	061505		4	56

② MAINTENANCE OF TRAFFIC



NOTE:
FOR LANE CLOSURES OTHER THAN
AT THE APPROACH ENDS OF THE CONSTRUCTION ZONE,
LEAVE OUT R55-1 SIGNS.

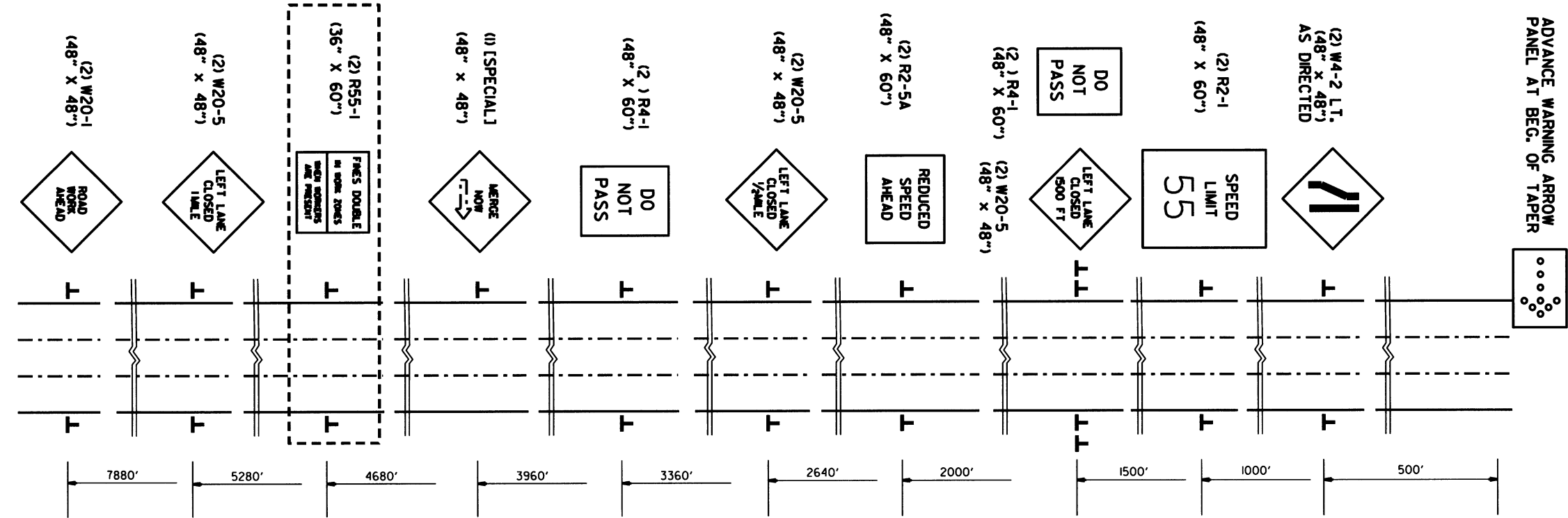
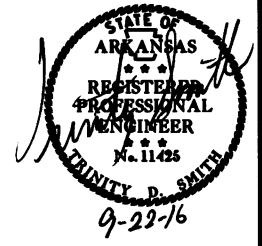


ADVANCE WARNING SIGNS & TYPICAL TRAFFIC DRUM PLACEMENT
FOR OUTSIDE LANE CLOSURE

ADVANCE WARNING ARROW
PANEL AT BEG. OF TAPER
AS SHOWN ABOVE

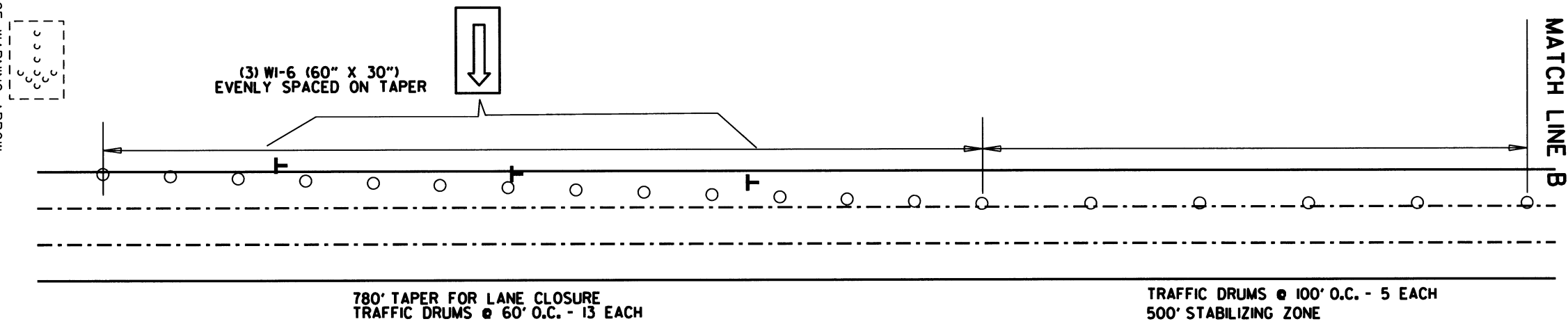
DATE REVISED	DATE FILED	DATE REVISED	DATE FILED	FED. DIST. NO.	STATE	FED. AID PROJ. NO.	SHEET NO.	TOTAL SHEETS
				6	ARK.		5	56
JOB NO. 061505								

② MAINTENANCE OF TRAFFIC



NOTE:
FOR LANE CLOSURES OTHER THAN
AT THE APPROACH ENDS OF THE CONSTRUCTION ZONE,
LEAVE OUT R55-1 SIGNS.

ADVANCE WARNING ARROW
PANEL AT BEG. OF TAPER
AS SHOWN ABOVE



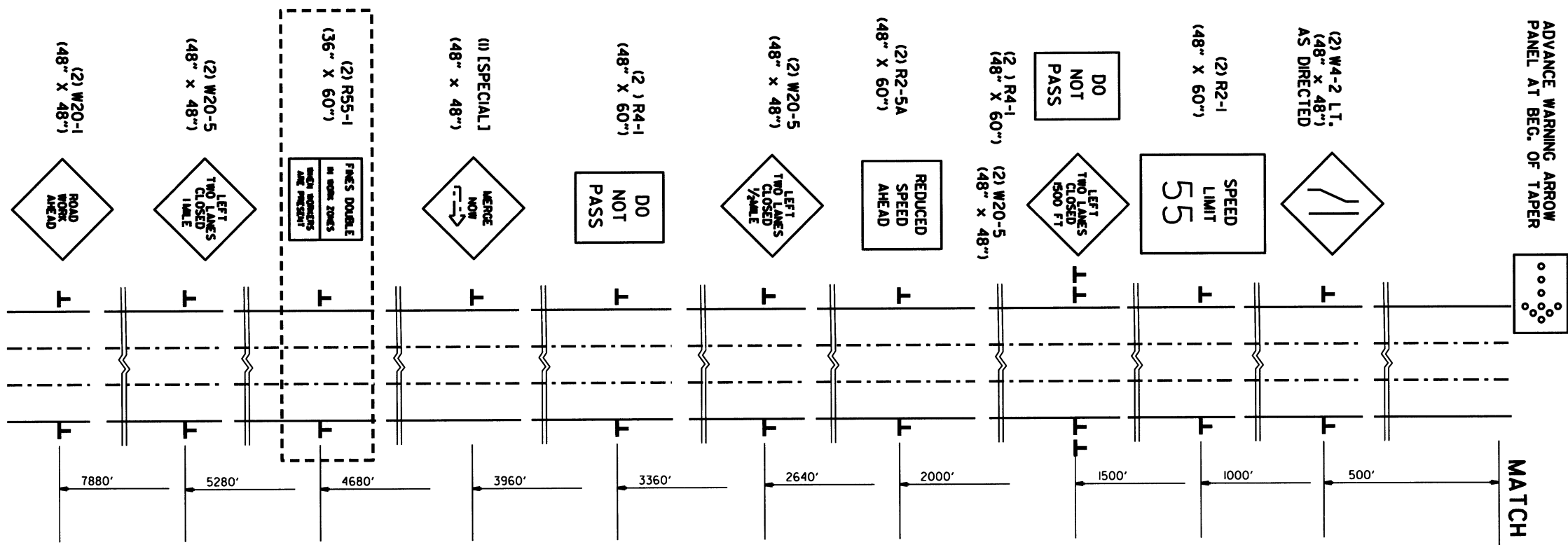
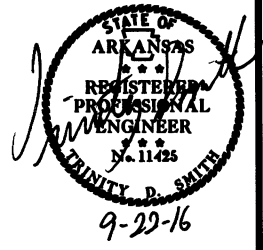
780' TAPER FOR LANE CLOSURE
TRAFFIC DRUMS @ 60' O.C. - 13 EACH

TRAFFIC DRUMS @ 100' O.C. - 5 EACH
500' STABILIZING ZONE

ADVANCE WARNING SIGNS & TYPICAL TRAFFIC DRUM LAYOUT
FOR INSIDE LANE CLOSURES

DATE REVISION	DATE PLACED	DATE REVISION	DATE PLACED	FED. DIST. NO.	STATE	FED. AID PROJ. NO.	SHEET NO.	TOTAL SHEETS
				6	ARK.		6	56
				JOB NO.	061505		6	56

② MAINTENANCE OF TRAFFIC



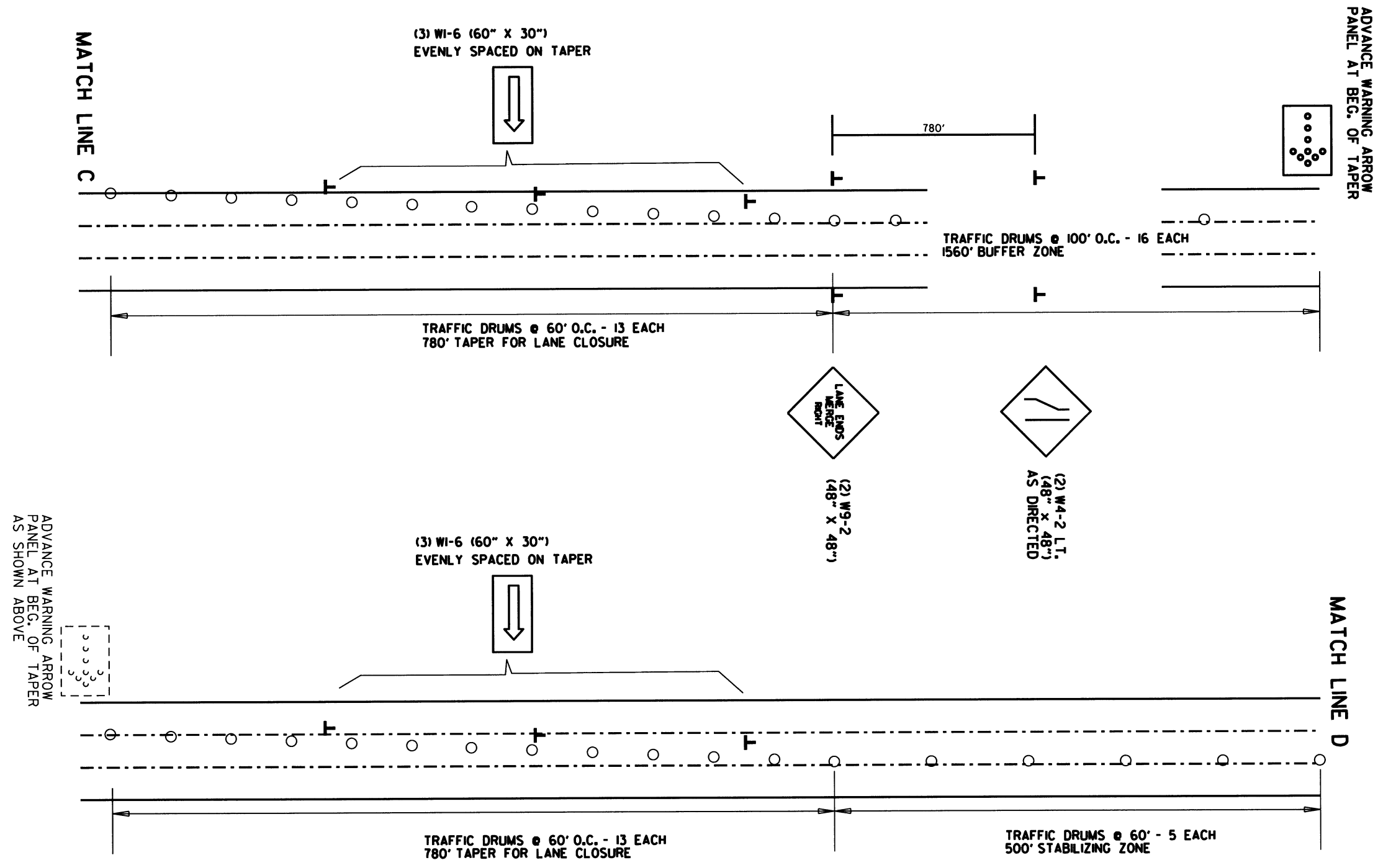
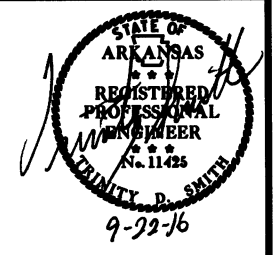
NOTE:
FOR LANE CLOSURES OTHER THAN
AT THE APPROACH ENDS OF THE CONSTRUCTION ZONE,
LEAVE OUT R55-1 SIGNS.

ADVANCE WARNING SIGNS
FOR INSIDE & MIDDLE LANE CLOSURES

MATCH LINE C

DATE REVISED	DATE PLANNED	DATE REVISED	DATE PLANNED	FED. DIST. NO.	STATE	FED. AID PROJ. NO.	SHEET NO.	TOTAL SHEETS
				6	ARK.		7	56
JOB NO. 061505								

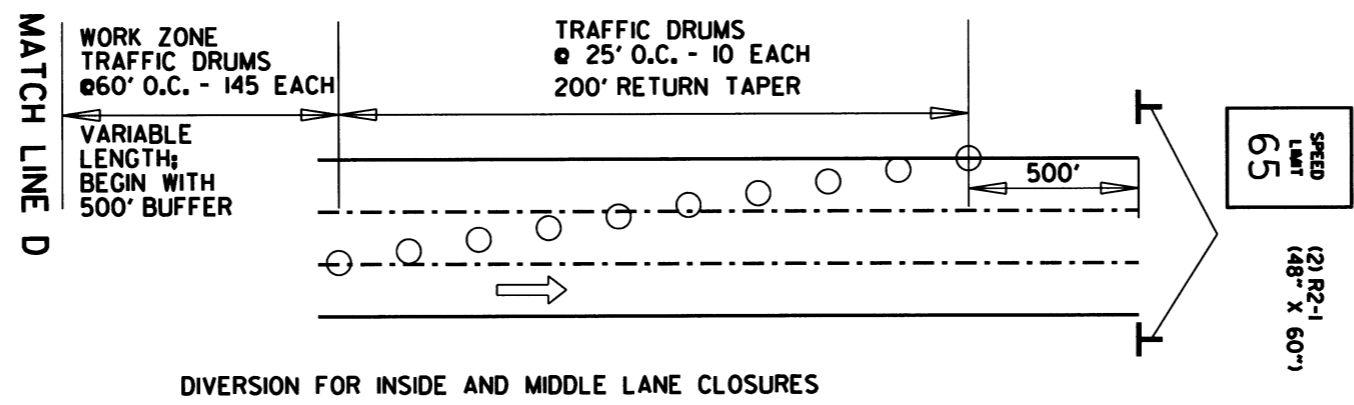
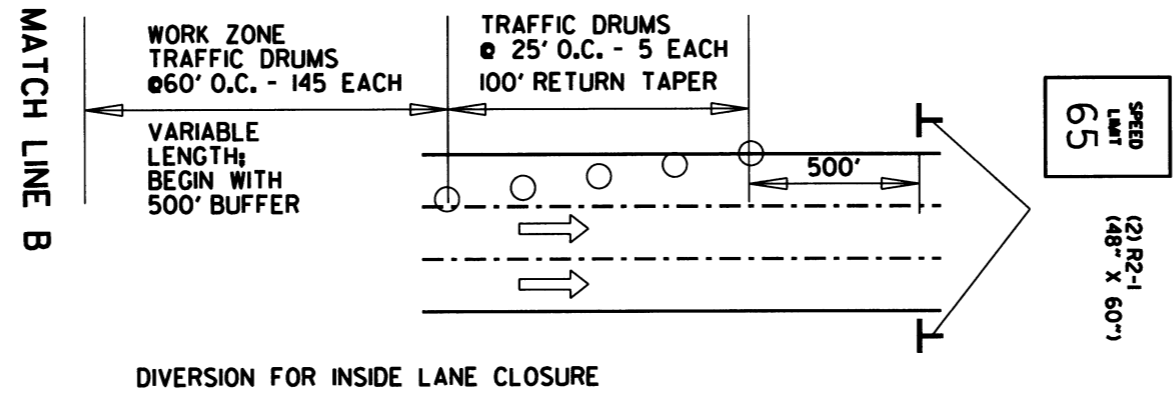
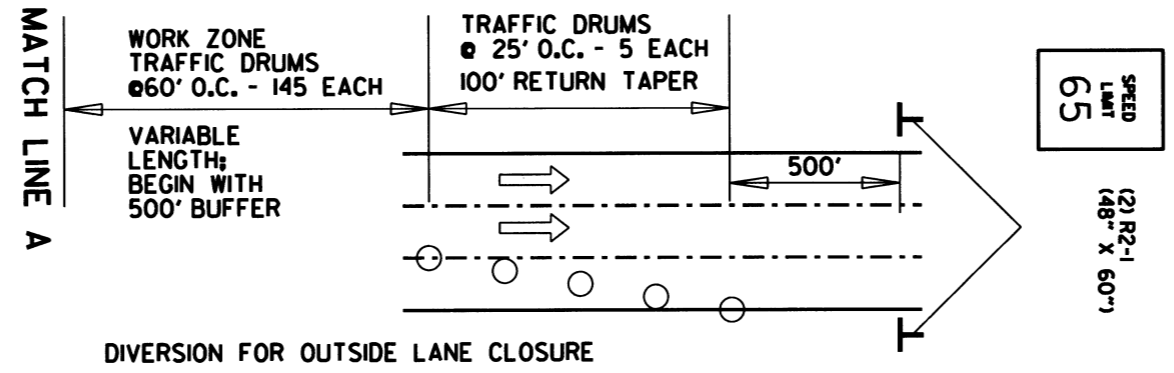
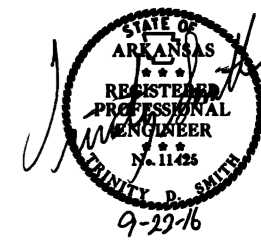
② MAINTENANCE OF TRAFFIC



ADVANCE WARNING SIGNS & TYPICAL TRAFFIC DRUM LAYOUT
FOR INSIDE & MIDDLE LANE CLOSURES

DATE REVISED	DATE PLANNED	DATE REVISED	DATE PLANNED	FEDERAL DIST. NO.	STATE	FED. AID PROJ. NO.	SHEET NO.	TOTAL SHEETS
				6	ARK.		8	56
				JOB NO. 061505				

② MAINTENANCE OF TRAFFIC



TYPICAL TRAFFIC DRUM LAYOUT FOR DIVERSION OF LANE CLOSURES