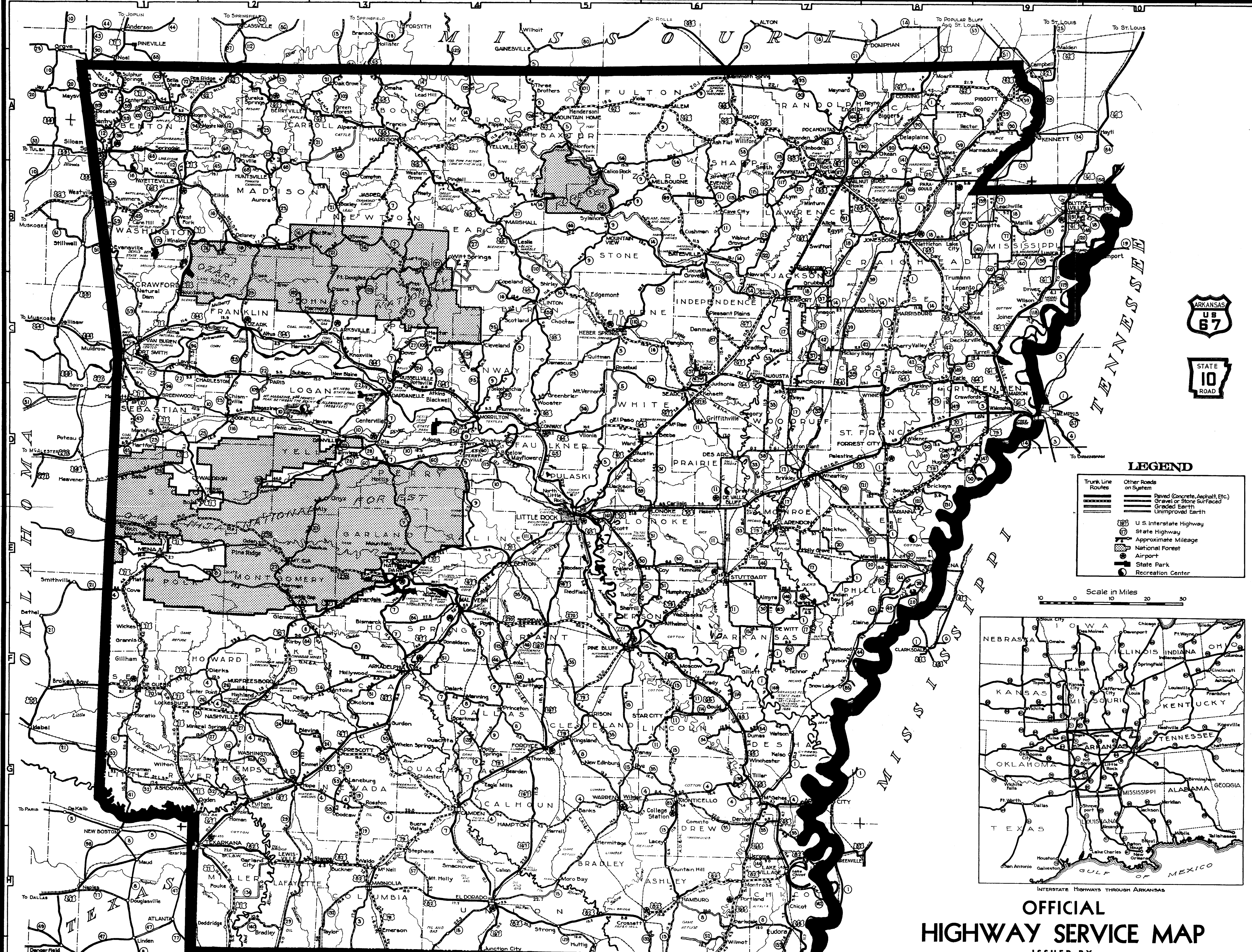


POINTS OF INTEREST

- F-2-ALBERT PIKE CAMP**—A beautiful camp with National Park accommodations deep in the Ouachita Mountains on the Little Missouri River. There are many other similar camps throughout the Ouachita National Forest area, with facilities for swimming, cooking, eating and camp sites, with a number of shelters.
- F-1 & B-APPLE ORCHARDS**—In the vicinity of Rogers and Fayetteville on US Highway 71 are located some of the famous Northwest Arkansas Apple Orchards.
- F-1-ARKANSAS UNIVERSITY**—Established in 1845, the home of the University of Arkansas. Beautiful buildings and a spacious, wooded campus add to the many other features of this outstanding institution.
- E-5-BOYLE PARK**—A municipal park 5 miles west of Little Rock and on US Highway 66. A beautiful woodland area of unspoiled naturalities.
- E-3-BUFFALO AND WHITE RIVER COUNTRY**—Harrison is the center of an agricultural and industrial area, located in the scenic Buffalo and White River Country, famous for fishing and an ideal vacation land.
- E-5-CALICO ROCK BLUFFS**—Fantastic, highly colored rock bluffs of unusual formations overlooking the White River on State Highway No. 5.
- E-5-CHALK CLIFFS**—Near Ashdown along Red River are located famous chalk cliffs. A few miles east, near Saragosa, State Highway 56, is the huge Arkansas Portland Cement Plant.
- E-5-CONFEDERATE MONUMENT**—At the site of the battle of Jenkins's Ferry, a few miles southwest of Sheridan on State Highway 46.
- E-3-DIAMOND CAVE**—Located 20 miles south of Harrison on U.S. Highway 71. Diamond Cave ranks with America's best.
- E-3-DYESS COLONY**—The first Federal Housing Project for rehabilitation of impoverished farm families. A planned community, complete in every respect, located in Mississippi County, near Wilson, on US Highway 51.
- E-2-EUREKA SPRINGS AND "BUCK SAUNDERS GUN EXHIBIT"**—A unique and delightful resort town with 63 natural springs and an eight-story hotel with all floor ground floor, at Berryville, 12 miles east, is the world famous gun exhibit of Buck Saunders.
- E-4-FISH MOUNTAINS**—Located at the junction of State Routes 16 and 25, this long famous resort with many midland springs in ideal location for a real vacation.
- E-2-HORSE SHOE LAKE**—A picturesque lake noted for fishing and hunting and readily accessible to Memphis. Beautiful hunting and fishing clubs and private homes can be seen along the shore. Near State Highways 50 and 147.
- E-4-HOT SPRINGS NATIONAL PARK**—The Nation's health and pleasure resort. Now also becoming famous as the gateway to the majestic, 300 miles of shore line of Lakes Catherine and Hamilton provide excellent fishing and water skiing. Several hundred miles sand visit here annually.
- E-4-HUGE ARTIFICIAL LAKE**—35 miles due west of Little Rock and near State Highway 9 is a picturesque artificial lake created for tourist pleasure.
- E-5-HUGE LUMBER MILLS**—Two of the largest lumber mills in the south are located at Warren on State Highways 4 and 15.
- E-2-INDUSTRIAL AND AGRICULTURAL CENTER**—Pine Bluff is a center for foundries, stock yards, cotton and wood working plants, on US Highways 66 and 79. Toney field provides excellent airport.
- E-3-IRON SPRINGS CAMP**—A beautiful camp in the Ouachita Mountains on State Highway 20, 15 miles south of Hollis.
- E-8-KING COTTONS CAPITOL**—Mississippi County is the largest cotton producing county in the world. Byrville is the business center.
- H-7-LAKE CHICOT**—Excellent accommodations are available at this famous game area of southeast Arkansas, located at the junction of US Highways 82 and 45.
- E-4-MAGNET COVE**—Magnet Cove valley located 7 miles north of Magnolia on US Highway 270, is the result of a volcanic eruption and is known as "Geologist's Paradise." Mafers on US Highways 47 and 270 is an industrial center of brick, wood products and textiles.
- E-4-MAMMOTH SPRING**—Mammoth Spring is one of the world's largest springs, located on US Highway 60 and on State Highway 58. The high water has long been famous as a resort with fishing, swimming, bathing and excursions. Rainbow trout are found here in Spring River.
- E-3-MARBLE LIMESTONE DEPOSITS**—Batesville, on the White River at intersection of State Highways 25, 62, 11 and 44, is famous for beautiful marble and lime deposits used for scenery on the upper White River Section.
- E-3-RECREATIONAL AREA**—Beautiful Ouachita Mountains State Park as well as a well developed recreational center make Mena a vacation spot along US Highway 11.
- E-1-MT. GAYLOR AND ALBERT PIKE MUSEUM**—Unsurpassed mountain scenery at "The Top of the Ozarks" Two miles south of Mt. Gaylor a museum is maintained in the low school house near Albert Pike taught. On US Highway 71.
- D-2-MT. MAGAZINE**—An ideal vacation spot on the second highest point (2,833 ft.) between the Rockies and the Alleghenies. State Highway 32 from Fayette and State Highway 19 from Havana lead to this beautiful mountain park that offers all the facilities of a resort.
- H-4-OIL FIELDS**—El Dorado is the center of the south and Nevada industry. Other fields are located in Miller and Nevada Counties.
- H-4-PEARL FISHING**—On the White River, near Newport on US Highway 62, pearl fishing is carried on extensively. Button manufacturing is carried on in Newport.
- E-2-PINE RICE**—Made famous by Lum Abner. Although their homes are at Mena, 20 miles west, this little Ouachita Mountain community is the home of the characters imitated by this team.
- E-4-POTTERY AND PAPER MILLS**—Camden is noted for its Camark Pottery and Southern Kraft Paper Mill. Nearby are the famous Old Hickory and the old bridge erected in 1862.
- E-2-RECREATIONAL AREA AND COTTON EXPERIMENT STATION**—A government project of land utilization is located a few miles southeast of Marianna; and north on US Highway 19 and State Highway 1 is located a branch cotton experiment station conducted by the University of Arkansas.
- E-1-RECREATIONAL CENTER**—Located between Fayetteville and Silvan Springs on US Highway 15, this center covers an area of 14,000 acres including 125-acre Lake Weddington and is important to accommodation.
- A-1-RESORT CENTERS**—Silvan Springs, Sulphur Springs and Silvan are resort centers near beautiful mountains that offer unlimited pleasures with every vacation facility.
- E-8 & E-7-RICE FIELDS**—Along State Highway 11 from Hazen to Stuttgart, on Highway 30, Stuttgart, Arkansas experiment station 3 miles east of Stuttgart.
- E-4-SCENERY AND FISHING**—Ruined, wooded mountains and crystal pure streams are characteristic of this Ozark Mountain area, near Marshall and Leslie on US Highway 66.
- E-3-SCENIC TRIANGLE**—Cotter, Mountain Home and Norfolk offer a picturesque scenic triangle bounded by North Fork and White Rivers.
- H-2-TEXARKANA**—At the junction of US Highways 67 and 82, is located Texarkana, an industrial center operating successfully under the laws of two states.
- G-2-WATERMELONS**—Several million carloads of Cotter watermelons are shipped annually from Hazen, Hempstead, and other areas of the large watermelons.
- D-7-WHITE AND GACHE RIVER SECTIONS**—An excellent fishing and hunting area, reached by State and County Highways from Harrison and Brainerd on US Highways 70 and Augusta and McCrory on US Highway 64.
- F-2-WORLD'S LARGEST PEACH ORCHARD**—Near Highland in the Nashville-Murfreesboro section are 12,000 acres of peaches with one and one-half million trees. This town here presents a scene beautiful beyond imagination.

STATE PARKS

- F-7-ARKANSAS POST STATE PARK**—First white settlement in Arkansas, established in 1856 by LaSalle. Located 25 miles south of DeWitt on Arkansas River.
- G-2-BAVE RIDGE STATE PARK**—On Highways 25 and 141, 10 miles southwest of Paragould. This park offers 300 acres for camping, fishing, swimming and all outdoor sports.
- E-1-DEVIL'S DEN STATE PARK**—A beautiful valley scenic area with excellent camping facilities. Can be reached from Winslow and West Park on US Highway 71.
- I-1-DONAGHEY STATE PARK**—An undeveloped park site located along State Highway 11, 3 miles southwest of Huttig.
- E-2-LAKE CATHERINE STATE PARK**—A developed park site lying on the south bank of Lake Catherine, east of Hot Springs.
- D-3-MT. NEBO STATE PARK**—On top of a mountain providing beautiful scenery and camping facilities. Located south of Dandridge on State Highway 15.
- D-4-PEYITT JEAN STATE PARK**—A modern developed mountain resort of unsurpassed interest. Excellent lodge and cabin accommodations with all indoor and outdoor sports. Morrison, on US Highway 64, is the gateway to this vacation center.



CITIES AND TOWNS

| | | | | | | | | | |
|--------|-----|--------|-----|--------|-----|--------|-----|--------|-----|
| Adona | A-1 | Albion | A-1 | Albion | A-1 | Albion | A-1 | Albion | A-1 |
| Albion | A-1 | Albion | A-1 | Albion | A-1 | Albion | A-1 | Albion | A-1 |
| Albion | A-1 | Albion | A-1 | Albion | A-1 | Albion | A-1 | Albion | A-1 |
| Albion | A-1 | Albion | A-1 | Albion | A-1 | Albion | A-1 | Albion | A-1 |
| Albion | A-1 | Albion | A-1 | Albion | A-1 | Albion | A-1 | Albion | A-1 |
| Albion | A-1 | Albion | A-1 | Albion | A-1 | Albion | A-1 | Albion | A-1 |
| Albion | A-1 | Albion | A-1 | Albion | A-1 | Albion | A-1 | Albion | A-1 |
| Albion | A-1 | Albion | A-1 | Albion | A-1 | Albion | A-1 | Albion | A-1 |
| Albion | A-1 | Albion | A-1 | Albion | A-1 | Albion | A-1 | Albion | A-1 |
| Albion | A-1 | Albion | A-1 | Albion | A-1 | Albion | A-1 | Albion | A-1 |

LEGEND

Trunk Line Routes
Other Roads on System
Paved (Concrete, Asphalt, etc.)
Gravel or Graded Earth
Unimproved Earth

U.S. Interstate Highway
State Highway
Approximate Mileage
National Forest
Airport
State Park
Recreation Center

Scale in Miles 0 10 20 30



OFFICIAL HIGHWAY SERVICE MAP

ISSUED BY
ARKANSAS STATE HIGHWAY COMMISSION
LITTLE ROCK

JAS. R. RHYNE Director of Highways
W. W. ZASS Chief Engineer
FRANK A. GERIC State Maintenance Engineer

RULES OF THE ROAD

OPERATOR'S LICENSE. All resident operators must be licensed. Examination is required for the ARKANSAS STATE POLICE in the county in which applicant resides. A non-resident who is at least 16 years of age and who has a license in his own state or country, and a non-resident who is at least 18 years of age and who has a license in his own state or country, may operate a passenger car for private use in this State for 90 days in any one calendar year.

REGISTRATION OF FOREIGN VEHICLES. Motor vehicles duly registered in the state of the owner may be operated in this State for 90 days without the payment of license fee if the owner or lessee is a motorist or tourist, and if the vehicle is properly insured in the home state or country. The owner or lessee must register the vehicle in the State for 30 days. These exemptions granted to State tourists like motorist or tourist are for private use in this State for 90 days in any one calendar year.

SPEED LIMITS. Vehicles shall not be driven at a speed greater than is reasonable and prudent under the conditions then existing. Where no special limiting laws are in effect, the maximum speed shall not exceed 25 miles per hour in cities and towns of less than 5,000 population; 35 miles per hour on city streets of 5,000 or more population; 45 miles per hour on open roads; and 55 miles per hour on interstate highways. The maximum speed shall be 65 miles per hour on interstate highways. The maximum speed shall be 55 miles per hour on other roads of 100 feet or more width. Handicap motor vehicles may be driven at a speed not exceeding that of the vehicle being driven. Vehicles shall be equipped with a horn or other device which will be used to warn of presence of vehicle. Special equipment is required on trucks.

LIGHTING EQUIPMENT. All vehicles operated at night must have proper lighting equipment in good working order. Headlights must reveal from a distance of 200 feet, and be adjusted to 150 feet. Handicap motor vehicles may be driven at a speed not exceeding that of the vehicle being driven. Vehicles shall be equipped with a horn or other device which will be used to warn of presence of vehicle. Special equipment is required on trucks.

RIGHT-OF-WAY. When two vehicles approach an intersection at approximately the same time the vehicle on the left shall yield the right-of-way to the vehicle on the right. However, if the vehicle on the left moves the intersection first, the vehicle on the right shall yield. Vehicles shall be equipped with a horn or other device which will be used to warn of presence of vehicle. Special equipment is required on trucks.

LEFT-TURN. Approach intersection in the lane to the right of and nearest to the center line of the highway. Do not swing to the right for left turn.

RIGHT-TURN. Let arm extended upward.

STOP AT STOP. Let arm extended downward.

KEEP TO THE RIGHT. It is unlawful to straddle or hug the center stripe on highways or lanes or marked. Do not pass on curves or hills, at intersections, or in any other place where you do not have a clear view ahead.

PARKING. It is unlawful to park or stop on the paved or main traveled portion of a highway, if you have trouble stop your vehicle off of the road. The vehicle shall be moved out of traffic or to a safe place as soon as possible. The vehicle shall be moved out of traffic or to a safe place as soon as possible. The vehicle shall be moved out of traffic or to a safe place as soon as possible.

ACCIDENT REPORTS. Drivers involved in accidents resulting in death, injury, or property damage shall report such accidents to the Arkansas State Police as soon as possible. A report must be filed with the Arkansas State Police within 24 hours of the time of the accident. All accidents must be reported to the State Police at Little Rock on any calendar year.

OTHER EQUIPMENT AND LAWS. Windshield wipers, rear view mirror, and other equipment required by law shall be in good working order. Vehicles shall be equipped with a horn or other device which will be used to warn of presence of vehicle. Special equipment is required on trucks.

U S 61
ARKANSAS-MISSOURI STATE LINE
TO WEST MEMPHIS

| South Bound Miles | City or Town | North Bound Miles |
|-------------------|------------------------------|-------------------|
| 0 | Arkansas-Missouri State Line | 70 |
| 6 | Blytheville | 64 |
| 17 | Oceola | 47 |
| 58 | Turrell | 17 |
| 65 | Marion | 5 |
| 70 | West Memphis | 0 |

U S 62
ARKANSAS-OKLAHOMA STATE LINE TO
ARKANSAS-MISSOURI STATE LINE

| East Bound Miles | City or Town | West Bound Miles |
|------------------|------------------------------|------------------|
| 0 | Arkansas-Oklahoma State Line | 355 |
| 28 | Fayetteville | 327 |
| 49 | Rogers | 306 |
| 88 | Eureka Springs | 267 |
| 132 | Harrison | 223 |
| 164 | Yellville | 191 |
| 191 | Mountain Home | 164 |
| 227 | Salem | 128 |
| 255 | Hardy | 100 |
| 294 | Pocahontas | 61 |
| 321 | Corning | 34 |
| 347 | Piggott | 8 |
| 355 | Arkansas-Missouri State Line | 0 |

U S 63
MAMMOTH SPRING (ARKANSAS-MISSOURI
STATE LINE) TO TURRELL

| South Bound Miles | City or Town | North Bound Miles |
|-------------------|----------------|-------------------|
| 0 | Mammoth Spring | 133 |
| 19 | Hardy | 114 |
| 64 | Hoxie | 69 |
| 85 | Jonesboro | 48 |
| 118 | Marked Tree | 15 |
| 133 | Turrell | 0 |

U S 64
ARKANSAS-OKLAHOMA STATE LINE
TO MARION

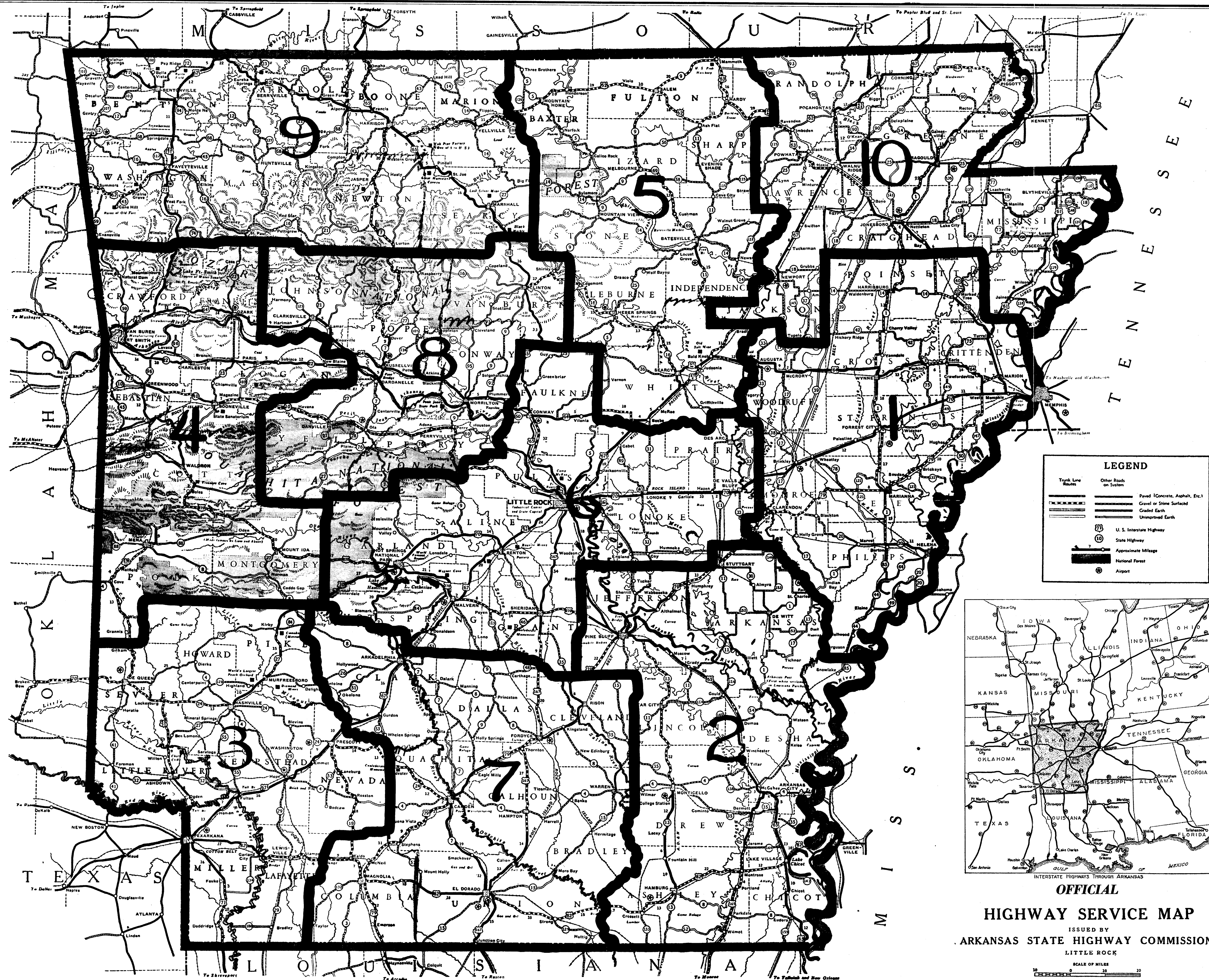
| East Bound Miles | City or Town | West Bound Miles |
|------------------|--------------|------------------|
| 0 | Fort Smith | 288 |
| 59 | Ozark | 250 |
| 1 | Clarksville | 227 |
| 26 | Russellville | 201 |
| 4 | Morrilton | 174 |
| 134 | Conway | 154 |
| 186 | Searcy | 102 |
| 199 | Bald Knob | 89 |
| 211 | Angusta | 77 |
| 247 | Wynne | 41 |
| 288 | Marion | 0 |

U S 65
ARKANSAS-MISSOURI STATE LINE
TO ARKANSAS-LOUISIANA STATE LINE

| South Bound Miles | City or Town | North Bound Miles |
|-------------------|-------------------------------|-------------------|
| 0 | Arkansas-Missouri State Line | 332 |
| 26 | Harrison | 306 |
| 68 | Marshall | 264 |
| 96 | Clinton | 236 |
| 137 | Conway | 195 |
| 169 | Little Rock | 163 |
| 214 | Pine Bluff | 118 |
| 277 | McGehee | 55 |
| 303 | Lake Village | 29 |
| 332 | Arkansas-Louisiana State Line | 0 |

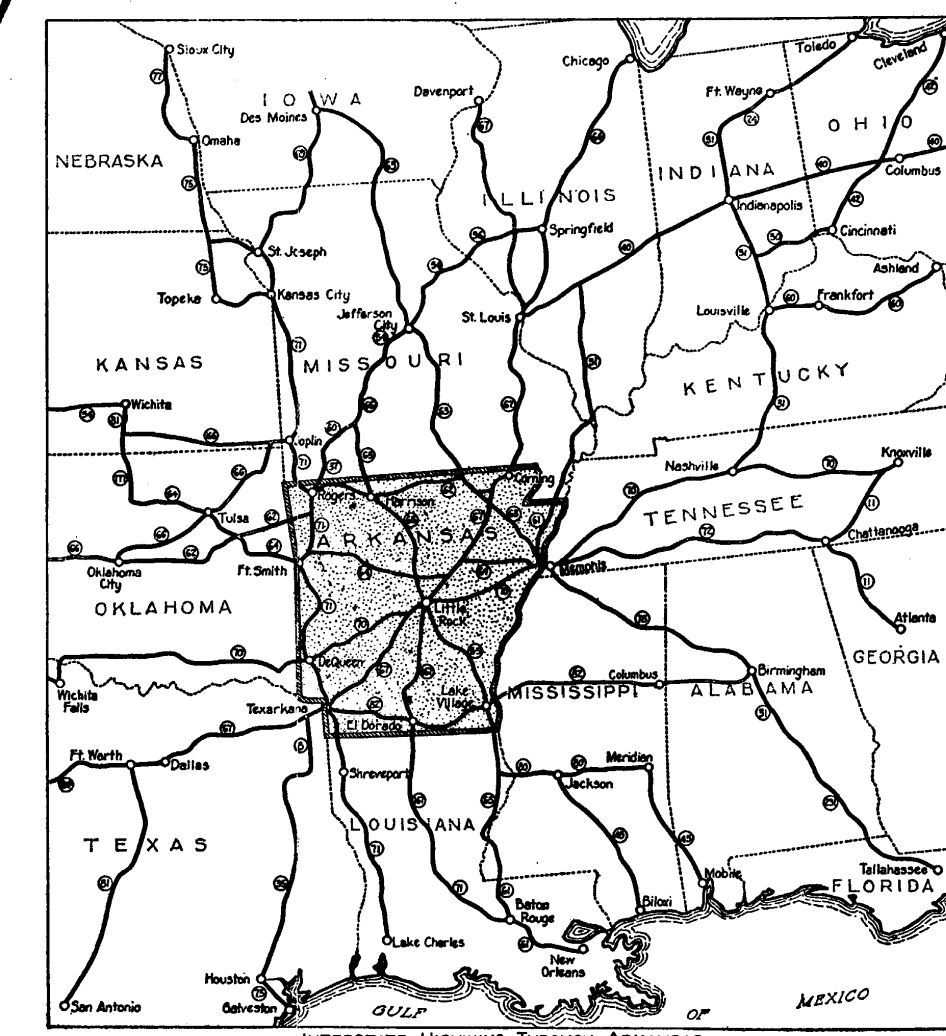
U S 67
ARKANSAS-MISSOURI STATE LINE
TO TEXARKANA

| South Bound Miles | City or Town | North Bound Miles |
|-------------------|------------------------------|-------------------|
| 0 | Arkansas-Missouri State Line | 337 |
| 7 | Corning | 330 |
| 34 | Pocahontas | 303 |
| 49 | Walnut Ridge | 288 |
| 87 | Newport | 250 |
| 127 | Searcy | 210 |
| 181 | Little Rock | 156 |
| 205 | Benton | 132 |
| 227 | Malvern | 110 |
| 258 | Arkadelphia | 84 |
| 285 | Prescott | 58 |
| 302 | Hope | 35 |
| 337 | Texarkana | 0 |



LEGEND

- Trunk Line
- Other Roads on System
- Paved (Concrete, Asphalt, Etc.)
- Gravel or Stone Surfaced
- Graded Earth
- Unimproved Earth
- U. S. Interstate Highway
- State Highway
- Approximate Mileage
- National Forest
- Airport



OFFICIAL
HIGHWAY SERVICE MAP
ISSUED BY
ARKANSAS STATE HIGHWAY COMMISSION
LITTLE ROCK
SCALE OF MILES

U S 70
ARKANSAS-OKLAHOMA STATE LINE
TO ARKANSAS-TENNESSEE STATE LINE

| East Bound Miles | City or Town | West Bound Miles |
|------------------|-------------------------------|------------------|
| 0 | Arkansas-Oklahoma State Line | 300 |
| 9 | Do Queen | 291 |
| 34 | Dierks | 266 |
| 73 | Glenwood | 227 |
| 106 | Hot Springs | 194 |
| 141 | Benton | 159 |
| 165 | Little Rock | 135 |
| 189 | Lonoke | 111 |
| 214 | DeValls Bluff | 86 |
| 232 | Brinkley | 68 |
| 256 | Forrest City | 44 |
| 293 | West Memphis | 7 |
| 300 | Arkansas-Tennessee State Line | 0 |

U S 71
ARKANSAS-MISSOURI STATE LINE
TO ARKANSAS-LOUISIANA STATE LINE

| South Bound Miles | City or Town | North Bound Miles |
|-------------------|-------------------------------|-------------------|
| 0 | Arkansas-Missouri State Line | 343 |
| 24 | Bentonville | 319 |
| 32 | Rogers | 311 |
| 53 | Fayetteville | 290 |
| 115 | Fort Smith | 228 |
| 160 | Waldron | 183 |
| 197 | Mena | 146 |
| 254 | De Queen | 89 |
| 309 | Texarkana | 34 |
| 343 | Arkansas-Louisiana State Line | 0 |

U S 79
INTERSECTION OF ROUTES 3 AND 64
(3 MILES NORTH OF LEHI)
TO ARKANSAS-LOUISIANA STATE LINE

| South Bound Miles | City or Town | North Bound Miles |
|-------------------|-------------------------------|-------------------|
| 0 | Intersection | 281 |
| 3 | Lehi | 378 |
| 46 | Marionna | 285 |
| 80 | Clarendon | 201 |
| 103 | Stuttgart | 178 |
| 147 | Pine Bluff | 134 |
| 195 | Fordyce | 86 |
| 226 | Camden | 55 |
| 263 | Magnolia | 18 |
| 281 | Arkansas-Louisiana State Line | 0 |

U S 82
TEXARKANA TO ARKANSAS-MISSISSIPPI
STATE LINE

| East Bound Miles | City or Town | West Bound Miles |
|------------------|---------------------------------|------------------|
| 0 | Texarkana | 195 |
| 33 | Lewisville | 163 |
| 59 | Magnolia | 136 |
| 95 | El Dorado | 100 |
| 138 | Crossett | 57 |
| 151 | Hamburg | 44 |
| 173 | Montrose | 22 |
| 185 | Lake Village | 10 |
| 195 | Arkansas-Mississippi State Line | 0 |

U S 165
INTERSECTION OF U. S. 165 AND U. S. 65
(2 MILES SOUTH OF McGEHEE)
TO ARKANSAS-LOUISIANA STATE LINE

| South Bound Miles | City or Town | North Bound Miles |
|-------------------|-------------------------------|-------------------|
| 0 | Intersection | 46 |
| 7 | Dermott | 39 |
| 24 | Montrose | 22 |
| 41 | Wilnot | 5 |
| 46 | Arkansas-Louisiana State Line | 0 |

U S 167
LITTLE ROCK TO JUNCTION CITY
(Arkansas-Louisiana State Line)

| South Bound Miles | City or Town | North Bound Miles |
|-------------------|---------------|-------------------|
| 0 | Little Rock | 186 |
| 34 | Shardan | 102 |
| 69 | Fordyce | 67 |
| 92 | Hampton | 44 |
| 119 | El Dorado | 17 |
| 136 | Junction City | 0 |

DAVID-YERGEN PRINTING CO., FT. SMITH, ARK.

U S 61
ARKANSAS-MISSOURI STATE LINE
TO WEST MEMPHIS

| South Bound Miles | City or Town | North Bound Miles |
|-------------------|------------------------------|-------------------|
| 0 | Arkansas-Missouri State Line | 70 |
| 6 | Blytheville | 64 |
| 17 | Occola | 47 |
| 25 | Turrell | 39 |
| 53 | Merton | 5 |
| 65 | West Memphis | 0 |

U S 62
ARKANSAS-OKLAHOMA STATE LINE
TO ARKANSAS-OKLAHOMA STATE LINE

| East Bound Miles | City or Town | West Bound Miles |
|------------------|------------------------------|------------------|
| 0 | Arkansas-Oklahoma State Line | 355 |
| 28 | Fayetteville | 327 |
| 49 | Rogers | 306 |
| 88 | Eureka Springs | 267 |
| 132 | Harrison | 223 |
| 164 | Yellville | 191 |
| 191 | Mountain Home | 164 |
| 227 | Salem | 128 |
| 255 | Hardy | 100 |
| 294 | Pocahontas | 61 |
| 321 | Corning | 34 |
| 347 | Piggott | 8 |
| 355 | Arkansas-Missouri State Line | 0 |

U S 63
MAMMOTH SPRING (ARKANSAS-MISSOURI STATE LINE) TO TURRELL

| South Bound Miles | City or Town | North Bound Miles |
|-------------------|----------------|-------------------|
| 0 | Mammoth Spring | 133 |
| 19 | Hardy | 114 |
| 64 | Hoxie | 69 |
| 85 | Jonesboro | 48 |
| 118 | Marked Tree | 15 |
| 133 | Turrell | 0 |

U S 64
ARKANSAS-OKLAHOMA STATE LINE
TO MARION

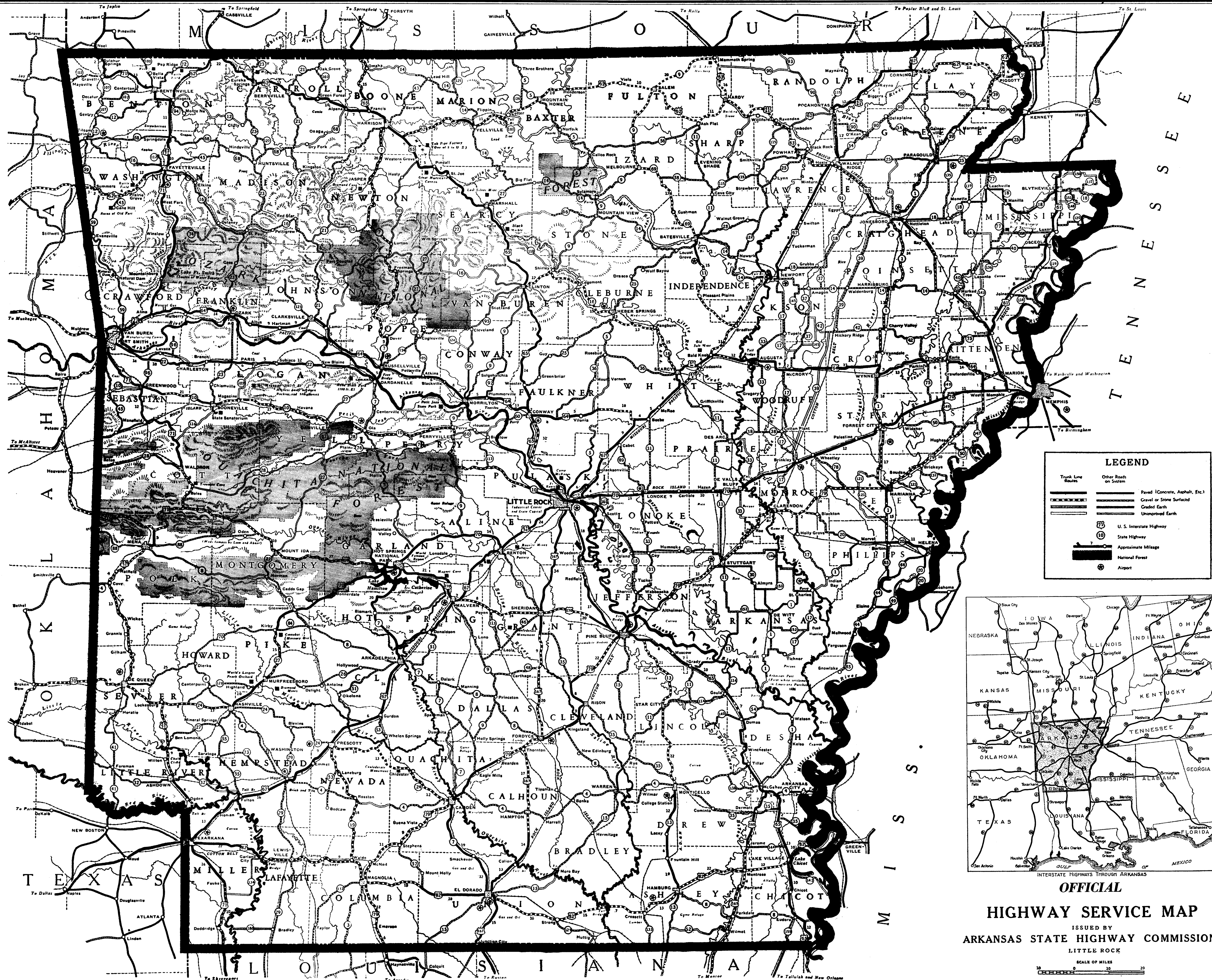
| East Bound Miles | City or Town | West Bound Miles |
|------------------|--------------|------------------|
| 0 | Fort Smith | 288 |
| 38 | Osark | 250 |
| 61 | Clarksville | 227 |
| 87 | Russellville | 201 |
| 114 | Morrilton | 174 |
| 134 | Conway | 154 |
| 186 | Scary | 102 |
| 199 | Bald Knob | 89 |
| 211 | Angus | 77 |
| 247 | Wynne | 41 |
| 288 | Marion | 0 |

U S 65
ARKANSAS-MISSOURI STATE LINE
TO ARKANSAS-LOUISIANA STATE LINE

| South Bound Miles | City or Town | North Bound Miles |
|-------------------|-------------------------------|-------------------|
| 0 | Arkansas-Missouri State Line | 332 |
| 26 | Harrison | 306 |
| 68 | Marshall | 264 |
| 96 | Clinton | 236 |
| 137 | Conway | 195 |
| 169 | Little Rock | 163 |
| 214 | Pine Bluff | 118 |
| 277 | McGehee | 55 |
| 303 | Lake Village | 29 |
| 332 | Arkansas-Louisiana State Line | 0 |

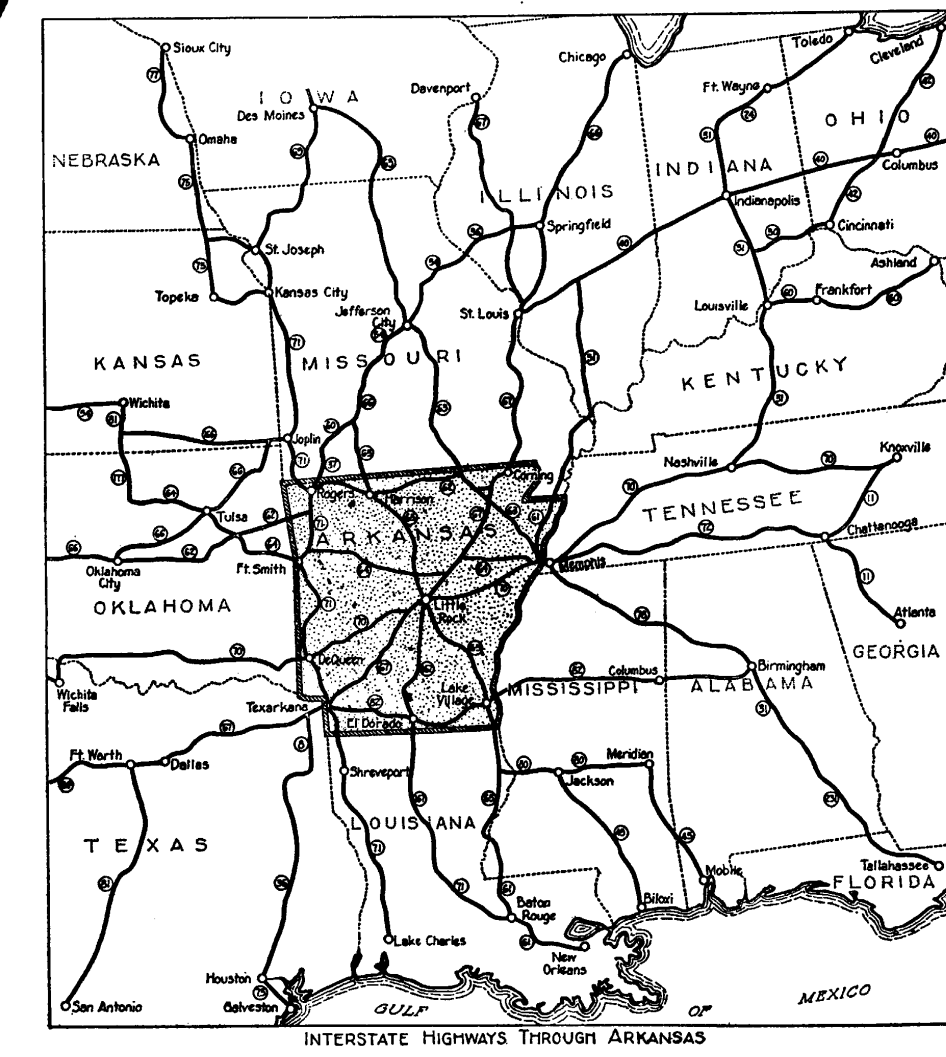
U S 67
ARKANSAS-MISSOURI STATE LINE
TO TEXARKANA

| South Bound Miles | City or Town | North Bound Miles |
|-------------------|------------------------------|-------------------|
| 0 | Arkansas-Missouri State Line | 387 |
| 7 | Corning | 330 |
| 34 | Pocahontas | 303 |
| 49 | Walnut Ridge | 288 |
| 87 | Newport | 250 |
| 127 | Scary | 210 |
| 181 | Little Rock | 156 |
| 205 | Benton | 132 |
| 227 | Malvern | 110 |
| 253 | Arkadelphia | 84 |
| 285 | Prescott | 52 |
| 302 | Hope | 35 |
| 387 | Texarkana | 0 |



LEGEND

- Trunk Line Route
- Other Roads on System
- Paved (Concrete, Asphalt, Etc.)
- Gravel or Stone Surfaced
- Graded Earth
- Unimproved Earth
- U. S. Interstate Highway
- State Highway
- Approximate Mileage
- National Forest
- Airport



OFFICIAL
HIGHWAY SERVICE MAP
ISSUED BY
ARKANSAS STATE HIGHWAY COMMISSION
LITTLE ROCK
SCALE OF MILES
0 10 20 30 40

U S 70
ARKANSAS-OKLAHOMA STATE LINE
TO ARKANSAS-TENNESSEE STATE LINE

| East Bound Miles | City or Town | West Bound Miles |
|------------------|-------------------------------|------------------|
| 0 | Arkansas-Oklahoma State Line | 300 |
| 9 | De Queen | 291 |
| 25 | Dierks | 266 |
| 34 | Glenwood | 227 |
| 73 | Hot Springs | 194 |
| 106 | Benton | 159 |
| 141 | Little Rock | 124 |
| 165 | Lonoke | 111 |
| 189 | D-Valle Bluff | 86 |
| 214 | Brinkley | 68 |
| 232 | Forrest City | 44 |
| 256 | West Memphis | 7 |
| 293 | Arkansas-Tennessee State Line | 0 |
| 300 | Mississippi River Free Bridge | 0 |

U S 71
ARKANSAS-MISSOURI STATE LINE
TO ARKANSAS-MISSOURI STATE LINE

| South Bound Miles | City or Town | North Bound Miles |
|-------------------|-------------------------------|-------------------|
| 0 | Arkansas-Missouri State Line | 343 |
| 24 | Beaumont | 319 |
| 32 | Rogers | 311 |
| 53 | Fayetteville | 290 |
| 115 | Fort Smith | 228 |
| 160 | Waldron | 183 |
| 197 | Menard | 146 |
| 254 | De Queen | 89 |
| 309 | Texarkana | 34 |
| 343 | Arkansas-Louisiana State Line | 0 |

U S 79
INTERSECTION OF ROUTES 3 AND 64
(3 MILES NORTH OF LEHI)
TO ARKANSAS-LOUISIANA STATE LINE

| South Bound Miles | City or Town | North Bound Miles |
|-------------------|-------------------------------|-------------------|
| 0 | Intersection | 281 |
| 3 | Lehi | 278 |
| 43 | Marion | 235 |
| 80 | Clarendon | 201 |
| 103 | Stuttgart | 178 |
| 147 | Pine Bluff | 134 |
| 195 | Fordyce | 86 |
| 226 | Camden | 55 |
| 263 | Magnolia | 18 |
| 281 | Arkansas-Louisiana State Line | 0 |

U S 82
TEXARKANA TO ARKANSAS-MISSISSIPPI STATE LINE

| East Bound Miles | City or Town | West Bound Miles |
|------------------|---------------------------------|------------------|
| 0 | Arkansas-Mississippi State Line | 195 |
| 33 | Texarkana | 162 |
| 59 | Magnolia | 136 |
| 95 | El Dorado | 100 |
| 138 | Crossett | 57 |
| 151 | Hamburg | 44 |
| 173 | Montrose | 22 |
| 185 | Lake Village | 10 |
| 195 | Arkansas-Mississippi State Line | 0 |
| | Mississippi River Ferry | 0 |

U S 165
INTERSECTION OF U. S. 165 AND U. S. 65
(2 MILES SOUTH OF McGEHEE)
TO ARKANSAS-LOUISIANA STATE LINE

| South Bound Miles | City or Town | North Bound Miles |
|-------------------|-------------------------------|-------------------|
| 0 | Intersection | 46 |
| 7 | Dermott | 39 |
| 24 | Montrose | 22 |
| 41 | Wilmett | 5 |
| 46 | Arkansas-Louisiana State Line | 0 |

U S 167
LITTLE ROCK TO JUNCTION CITY
(Arkansas-Louisiana State Line)

| South Bound Miles | City or Town | North Bound Miles |
|-------------------|---------------|-------------------|
| 0 | Little Rock | 136 |
| 34 | Sheridan | 102 |
| 69 | Fordyce | 67 |
| 92 | Hampton | 44 |
| 119 | El Dorado | 17 |
| 136 | Junction City | 0 |

DELBERT-HARRIS PRINTING CO., FT. SMITH, ARK.