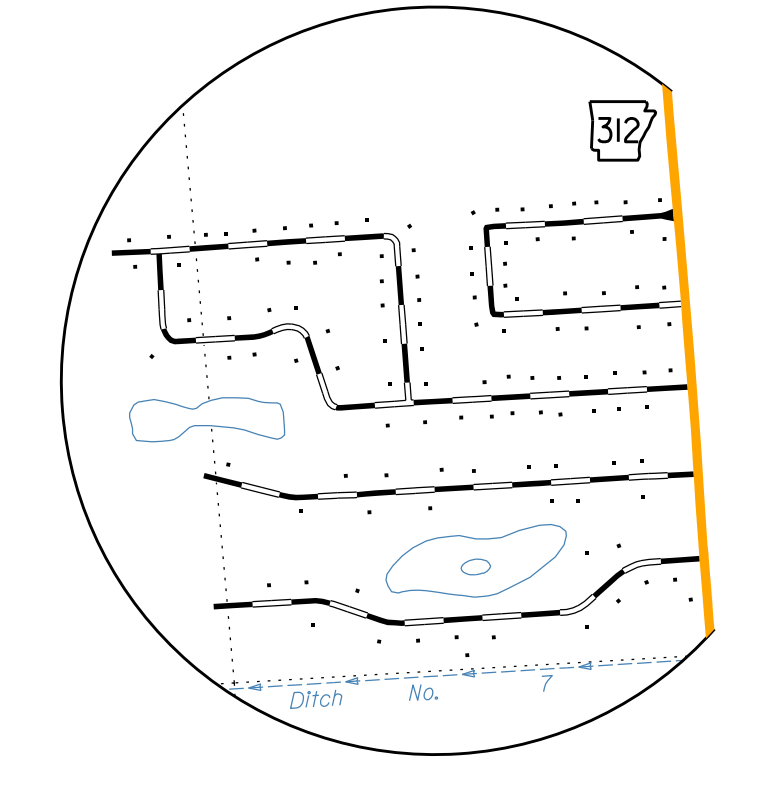
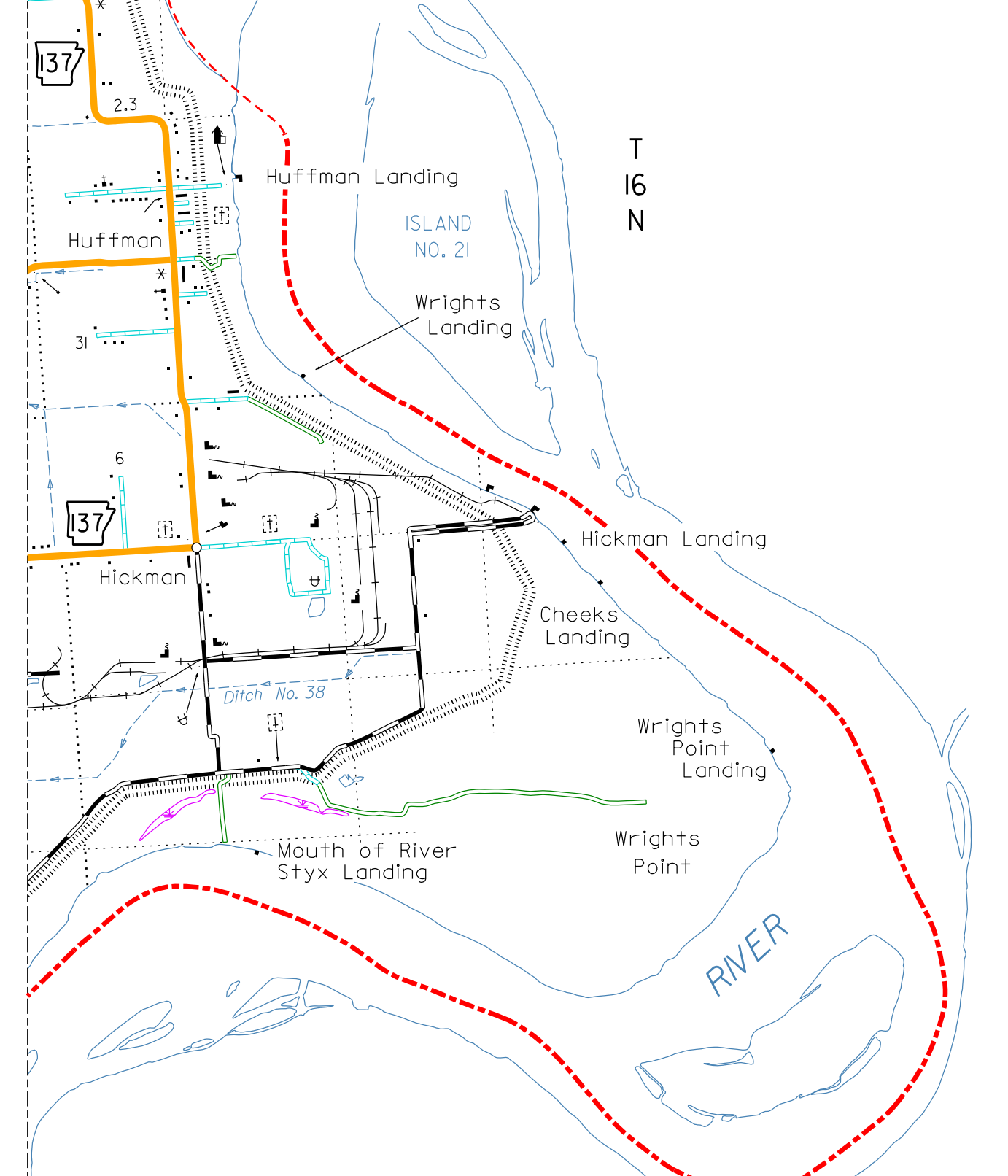


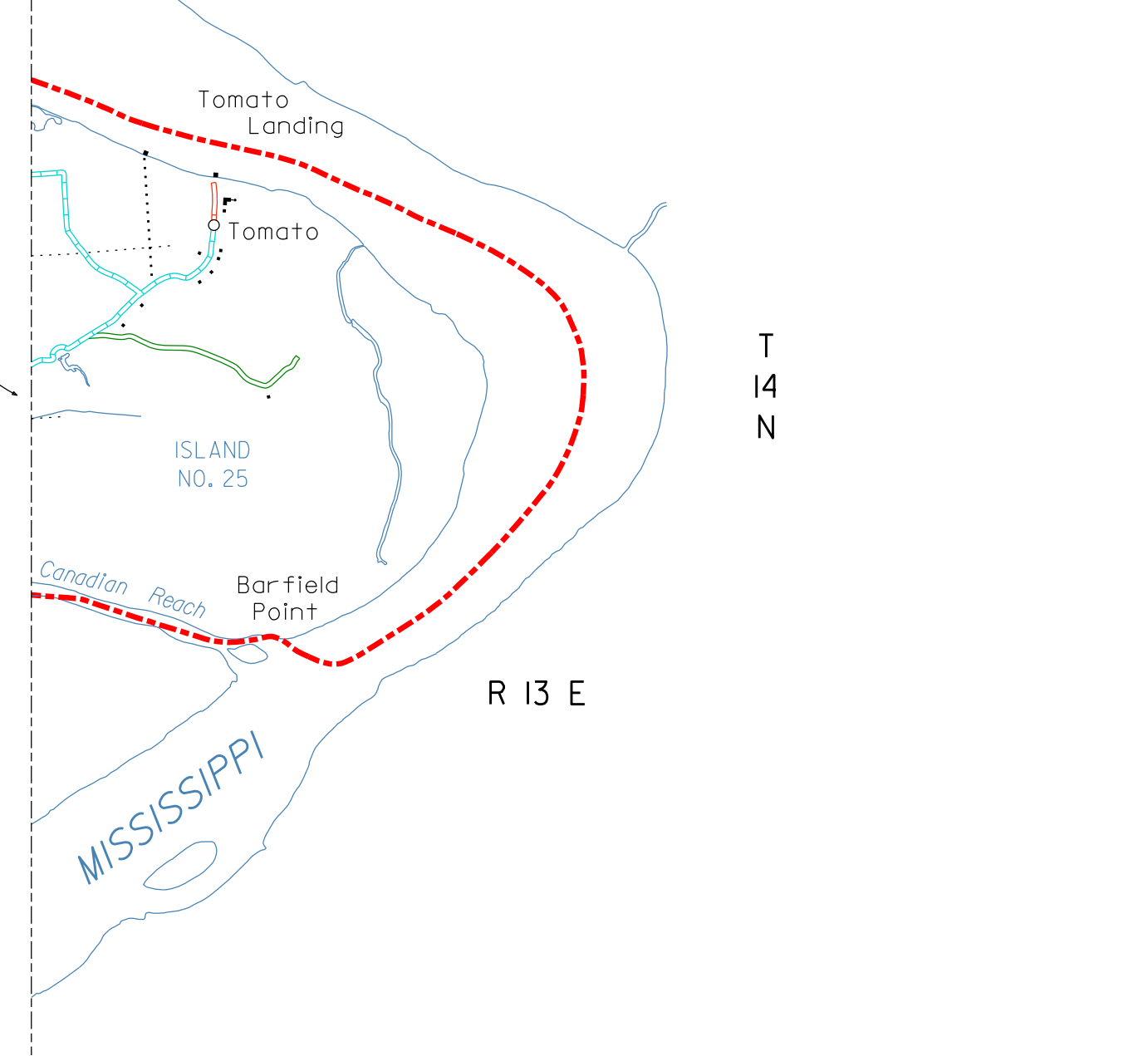
NUMBER NINE  
Sec. 21, 25, 27, 28, T 16 N, R 12 E



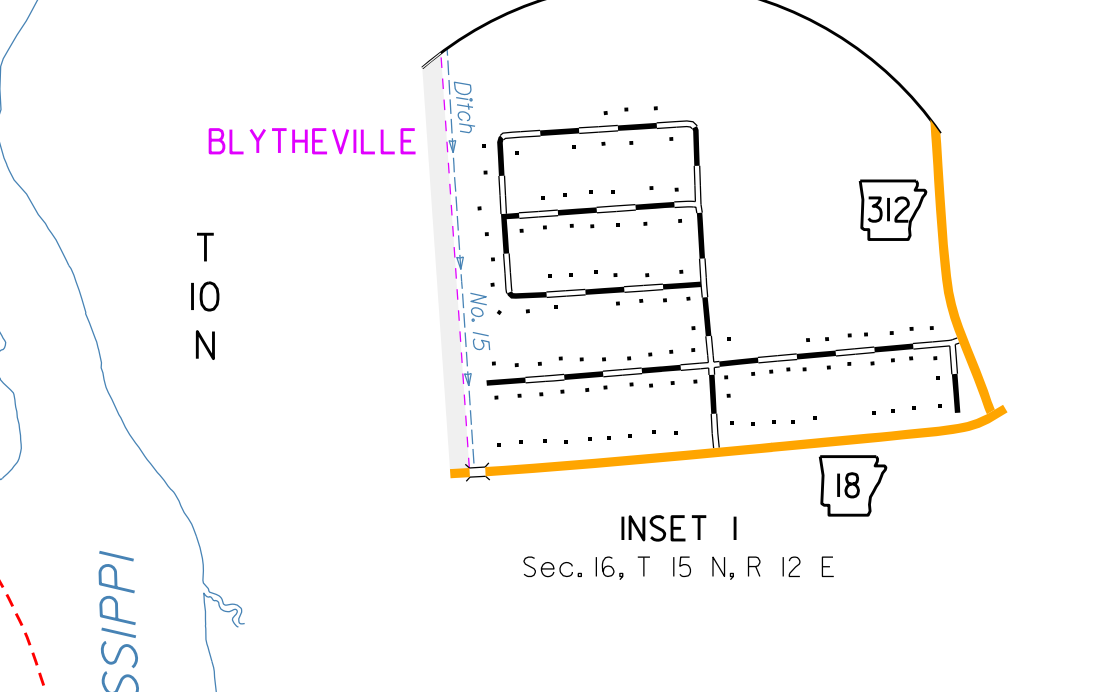
INSET NO. 2  
Sec. 4, 5, 3, T 15 N, R 12 E



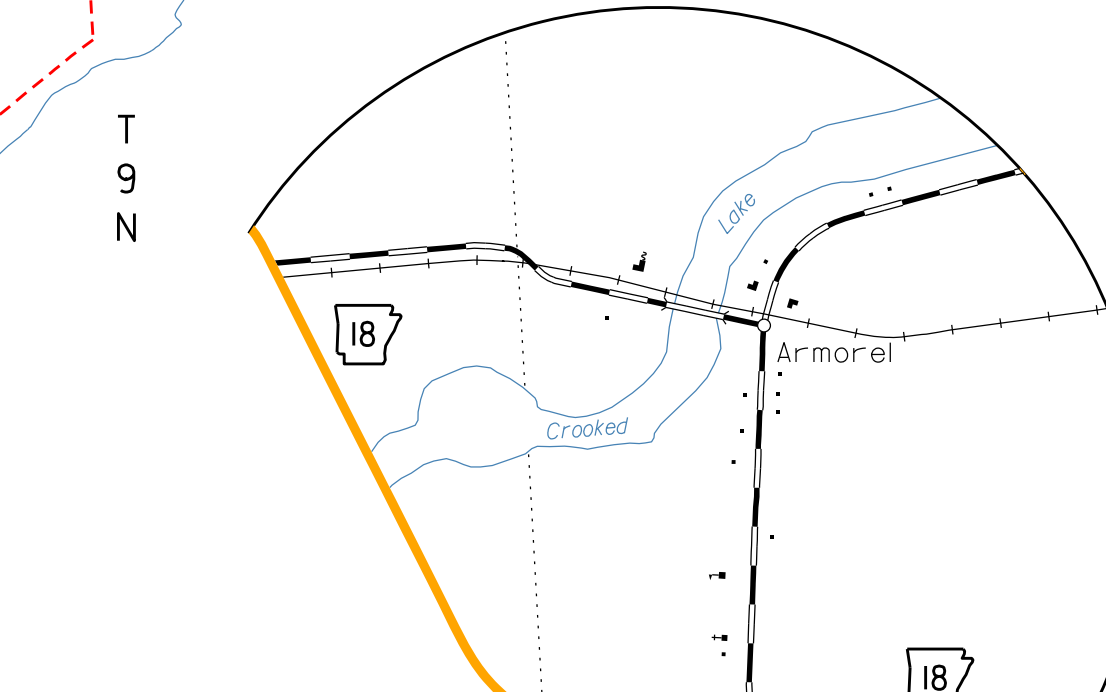
INSET NO. 1  
Sec. 16, T 15 N, R 12 E



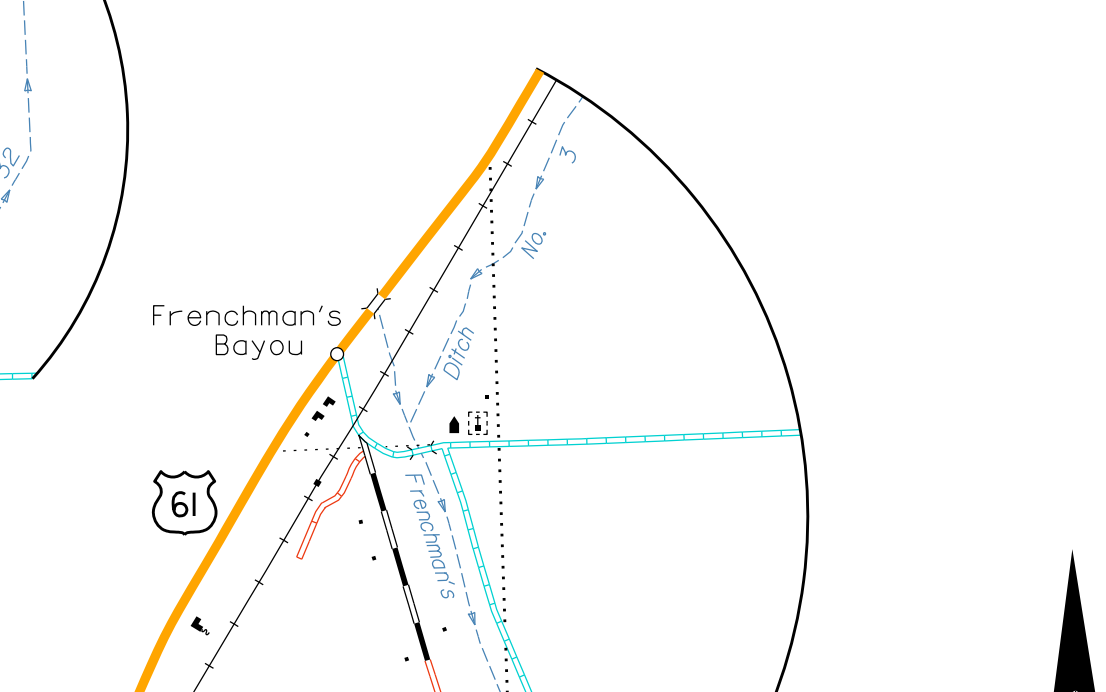
INSET NO. 3  
Sec. 15, 16, T 15 N, R 12 E



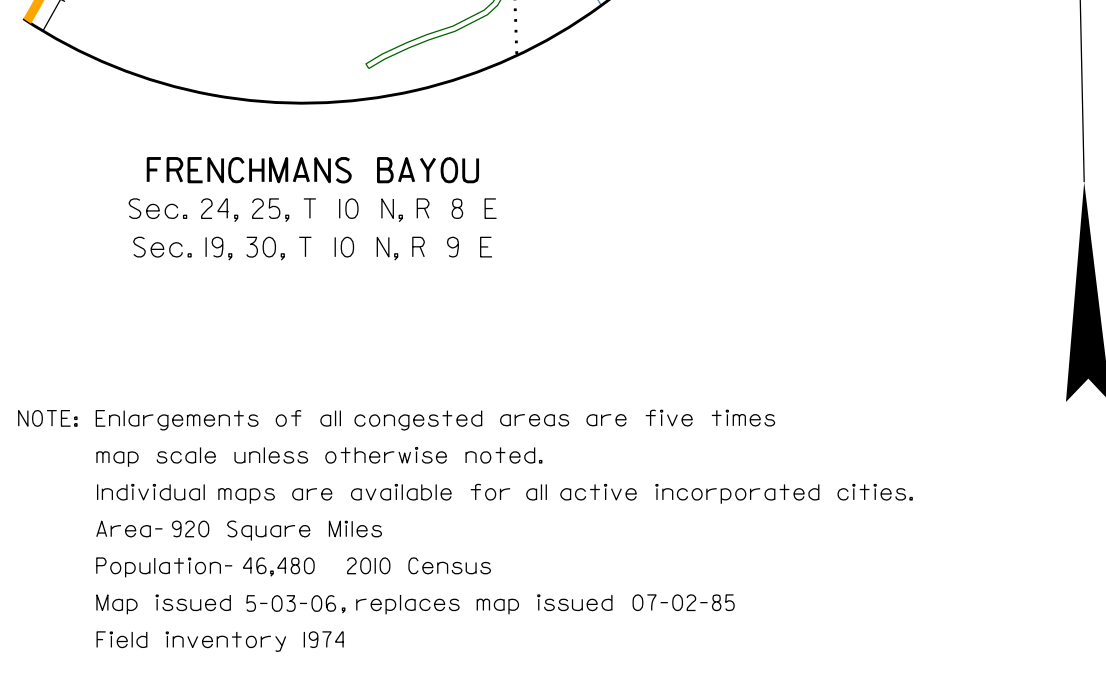
INSET NO. 4  
Sec. 27, 28, 34, T 16 N, R 11 E



INSET NO. 5  
Sec. 24, 25, T 10 N, R 8 E



INSET NO. 6  
Sec. 24, 25, T 16 N, R 10 E



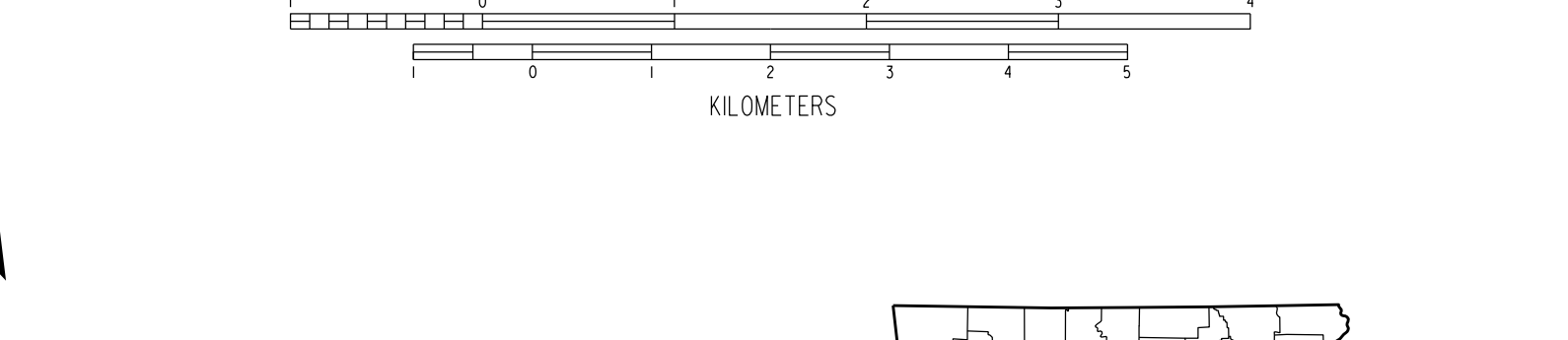
INSET NO. 7  
Sec. 26, 27, 34, 35, T 15 N, R 11 E

LEGEND

- STATE BOUNDARY
COUNTY BOUNDARY
STATE OR COUNTY LINE INDETERMINATE
U.S. LAND TOWNSHIP LINE
SECTION LINE
PARK OR RESERVATION BOUNDARY
PAVED STATE OR U.S. HIGHWAY
DIVIDED HIGHWAY
INTERSTATE HIGHWAY
U.S. NUMBERED HIGHWAY
STATE HIGHWAY
PAVED LOCAL ROAD
GRAVEL LOCAL ROAD
GRADED & DRAINED LOCAL ROAD
UNIMPROVED LOCAL ROAD
INTERCHANGE
RAILROAD
RAILROAD STATION
GRADE CROSSING
OVERPASS
UNDERPASS
HIGHWAY BRIDGE
LEVEE OR DIKE
LEVEE WITH POND
MILEAGE BETWEEN ROADS
LAKE, RESERVOIR OR POND WITH DAM
LAKE, RESERVOIR OR POND
MARSH OR SWAMP
WIDE RIVER OR STREAM
DOCK, PIER OR LANDING
NAVIGABLE STREAM
SMALL STREAM
DRAINAGE DITCH
CORPORATE LIMITS AND ROADS THROUGH TOWN
COUNTY SEAT
OTHER CITIES AND TOWNS
MUNICIPAL AIRPORT
PRIVATE AIRFIELD
FARM UNIT OR DWELLING
GROUP OF CLOSELY SPACED DWELLINGS
APARTMENT COMPLEX, OR MOTEL
CHURCH OR OTHER RELIGIOUS INSTITUTION
SCHOOL
POST OFFICE
POST OFFICE AND BUSINESS
CEMETERY
CHURCH WITH CEMETERY ADJACENT
BUSINESS ESTABLISHMENT
FACTORY OR INDUSTRIAL PLANT-COTTON GIN
GAS TANK
GRAVEL PIT OR QUARRY
COUNTY OR STATE PRISON
RADIO OR TELEVISION STATION AND CALL LETTERS
FOREST RANGER STATION
GAUGING OR PUMPING STATION
POWER SUBSTATION
GRAN ELEVATOR
TRAILER PARK
HISTORICAL MONUMENT
GOLF COURSE OR COUNTRY CLUB
SMALL PARK (STATE, COUNTY, MUNICIPAL, PRIVATE, REST AREA)
WATER SUPPLY STANDPIPE OR TANK
SEWAGE DISPOSAL PLANT
GARBAGE DUMP OR SANITARY LANDFILL
AUTO SALVAGE YARD

GENERAL HIGHWAY MAP MISSISSIPPI COUNTY ARKANSAS

PREPARED BY ARKANSAS DEPARTMENT OF TRANSPORTATION TRANSPORTATION PLANNING AND POLICY DIVISION IN COOPERATION WITH U.S. DEPARTMENT OF TRANSPORTATION FEDERAL HIGHWAY ADMINISTRATION SCALE 1:62,500



NOTES: Enlargements of all colored areas are five times map scale unless otherwise noted. Individual maps are available for all active incorporated cities. Population: 46,480 2000 Census. Map issued 5-03-06, replaces map issued 07-02-85. Map Inventory 014.

Map revisions made from aerial photographs taken 5-26-04. Map compilation completed 02-20-06. County map produced using Computer Assisted Cartography. Map revised 04-06-2006, part of SXLB, Section 7, derived from the State Highway System, ILM. Map revised 01-17-00, deleted bridge from SXLB, Section 7, ILM. Map revised 03-29-06, part of SXLB, Section 1 added to State Highway System, ILM. Map revised 09-26-06, part of SXLB, Section 6 added to State Highway System, ILM. Map revised 07-25-04, SXLB, Section 5, deleted from State Highway System, ILM. Map revised 04-02-02, SXLB, Section 1, deleted from State Highway System, ILM.