

ARKANSAS DEPARTMENT OF TRANSPORTATION
 LOUIE TUDOR, P.E., DIRECTOR
 PRELIMINARY DESIGN SCHEMATIC
 I-49 PROJECT
 CRAWFORD AND SEBASTIAN COUNTIES

4-20
 FROM HIGHWAY 22 TO INTERSTATE 40
 JOB NO. 040748
 PROJECT LENGTH - 14.4 MILES

ITEM	QUANTITY	UNIT	AMOUNT
Right of Way	14.4	MILES	14.4
Construction	14.4	MILES	14.4
Structure	14.4	MILES	14.4
Other	14.4	MILES	14.4

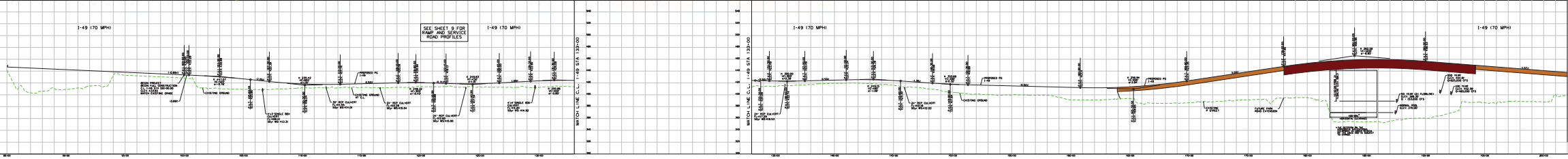
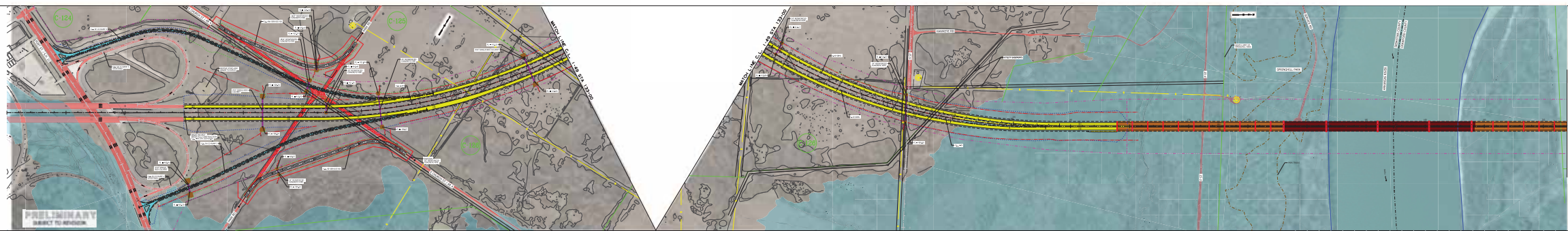
4-49 PROJECT
 HIGHWAY CLASSIFICATION
 URBAN FREEWAY

PRELIMINARY SUBJECT TO CHANGE BASED ON FURTHER DEVELOPMENTS INCLUDING TRAFFIC, ENVIRONMENTAL, AND TECHNICAL REVIEW.

TABLE OF CONTENTS

PLAN/PROFILE	14
PROFILES	14

PREPARED BY HNTB UNDER THE SUPERVISION OF JORDAN BEVELL, P.E.
 LICENSE NO. 19907



LEGEND

- Main Lanes
- System Ramps
- Cross Streets
- Frontage Roads
- Service Ramps (Signalized/Unsignalized)
- Concrete Open Span Bridge Structure
- Steel Bridge Structure
- Existing Roadway to Remain
- 100 Year Floodplain
- Bridge Substructure
- Proposed Storm Drains
- Shoulders
- Divergency / Local Service Roads
- Concrete
- Existing STATE ROW
- Proposed ROW
- Temporary Construction Easement
- Road Shoulder
- Proposed Construction Limits Cut
- Proposed Construction Limits Fill
- Proposed Centerline / Baseline
- Proposed Retaining Wall
- Concrete Barrier
- Guardrail
- Property Line
- Pavement Removal
- Gas Well
- Gas Line

ARKANSAS DEPARTMENT OF TRANSPORTATION
 LOUIE TUDOR, P.E., DIRECTOR
 PRELIMINARY DESIGN SCHEMATIC
 I-49 PROJECT
 CRAWFORD AND SEBASTIAN COUNTIES

4-20
 FROM HIGHWAY 22 TO INTERSTATE 40
 JOB NO. 040748
 PROJECT LENGTH - 14.4 MILES

ITEM	QUANTITY	UNIT	AMOUNT
Right of Way	14.4	MILES	14.4
Construction	14.4	MILES	14.4
Structure	14.4	MILES	14.4
Other	14.4	MILES	14.4

4-49 PROJECT
 HIGHWAY CLASSIFICATION
 URBAN FREEWAY

PRELIMINARY SUBJECT TO CHANGE BASED ON FURTHER DEVELOPMENTS INCLUDING TRAFFIC, ENVIRONMENTAL, AND TECHNICAL REVIEW.

TABLE OF CONTENTS

PLAN/PROFILE	14
PROFILES	14

PREPARED BY HNTB UNDER THE SUPERVISION OF JORDAN BEVELL, P.E.
 LICENSE NO. 19907

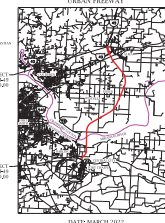


ARKANSAS DEPARTMENT OF TRANSPORTATION
 LOREI TUDOR, P.E., DIRECTOR
 PRELIMINARY DESIGN SCHEMATIC
 I-49 PROJECT
 CRAWFORD AND SEBASTIAN COUNTIES

FROM HIGHWAY 22 TO INTERSTATE 40
 JOB NO. 040748

PROJECT LENGTH - 14.4 MILES

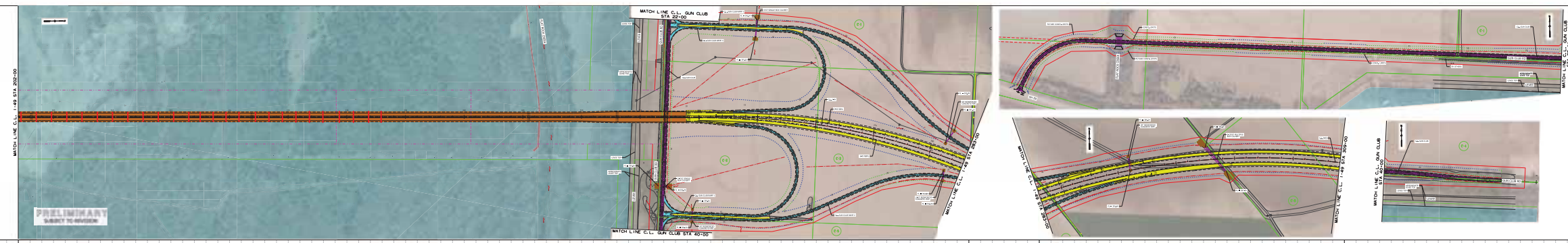
DESIGN	100%
CONSTRUCTION	0%
OPERATION	0%
MAINTENANCE	0%
REPAIRS	0%
RECONSTRUCTION	0%
REPLACEMENT	0%
REVISIONS	0%
REWORK	0%
REDESIGN	0%
RECONSTRUCTION	0%
REPLACEMENT	0%
REVISIONS	0%
REWORK	0%
REDESIGN	0%



PRELIMINARY SUBJECT TO CHANGE BASED ON FURTHER DEVELOPMENTS INCLUDING ENVIRONMENTAL, SOCIAL AND TECHNICAL REVIEW.

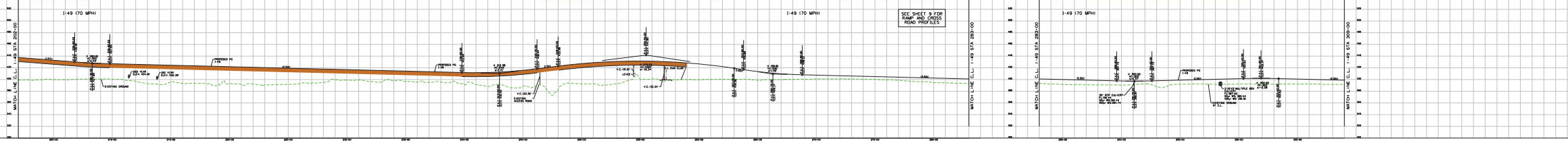
TABLE OF CONTENTS

PLAN/PROFILE	14.4
PROFILES	14.4



LEGEND

- Main Lanes
- System Ramps
- Cross Streets
- Frontage Roads
- Service Ramps (Diagonal/Transit)
- Concrete Open Bridge Structure
- Steel Bridge Structure
- Existing Roadway to Remains
- 100 Year Floodplain
- Bridge Substructure
- Proposed Storm Drains
- Shoulders
- Divergency / Local Service Roads
- Concrete
- Existing STATE ROW
- Proposed ROW
- Temporary Construction Easement
- Road Shoulder
- Proposed Construction Limits Cut
- Proposed Construction Limits Fill
- Proposed Centerline / Baseline
- Proposed Retaining Wall
- Concrete Barrier
- Guardrail
- Property Line
- Pavement Removal
- Gas Well
- Gas Line

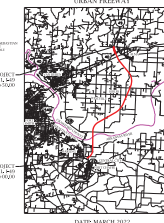


ARKANSAS DEPARTMENT OF TRANSPORTATION
 LOREI TUDOR, P.E., DIRECTOR
 PRELIMINARY DESIGN SCHEMATIC
 I-49 PROJECT
 CRAWFORD AND SEBASTIAN COUNTIES

FROM HIGHWAY 22 TO INTERSTATE 40
 JOB NO. 040748

PROJECT LENGTH - 14.4 MILES

DESIGN	100%
CONSTRUCTION	0%
OPERATION	0%
MAINTENANCE	0%
REPAIRS	0%
RECONSTRUCTION	0%
REPLACEMENT	0%
REVISIONS	0%
REWORK	0%
REDESIGN	0%



PRELIMINARY SUBJECT TO CHANGE BASED ON FURTHER DEVELOPMENTS INCLUDING ENVIRONMENTAL, SOCIAL AND TECHNICAL REVIEW.

TABLE OF CONTENTS

PLAN/PROFILE	14.4
PROFILES	14.4



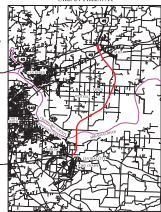
ARKANSAS DEPARTMENT OF TRANSPORTATION
 LOBBE TUDOR, P.L.C. - DIRECTOR
 PRELIMINARY DESIGN SCHEMATIC
 I-49 PROJECT
 CRAWFORD AND SEBASTIAN COUNTIES

FROM HIGHWAY 22 TO INTERSTATE 40
 JOB NO. 040748

PROJECT LENGTH - 14.4 MILES

ITEM	QUANTITY	UNIT
CONCRETE	1,200,000	CU YD
ASPHALT	1,500,000	CU YD
STEEL	10,000	TONS
WOOD	500	CU YD
GRAVEL	2,000,000	CU YD
EMULSION	100,000	CU YD
PAVEMENT REMOVAL	100,000	CU YD
UTILITY	100,000	CU YD
LAND ACQUISITION	100,000	CU YD
ENVIRONMENTAL	100,000	CU YD
CONSTRUCTION	100,000	CU YD
OPERATION	100,000	CU YD
MAINTENANCE	100,000	CU YD
RESEARCH	100,000	CU YD
TRAINING	100,000	CU YD
ADMINISTRATION	100,000	CU YD
PROFESSIONAL	100,000	CU YD
OTHER	100,000	CU YD

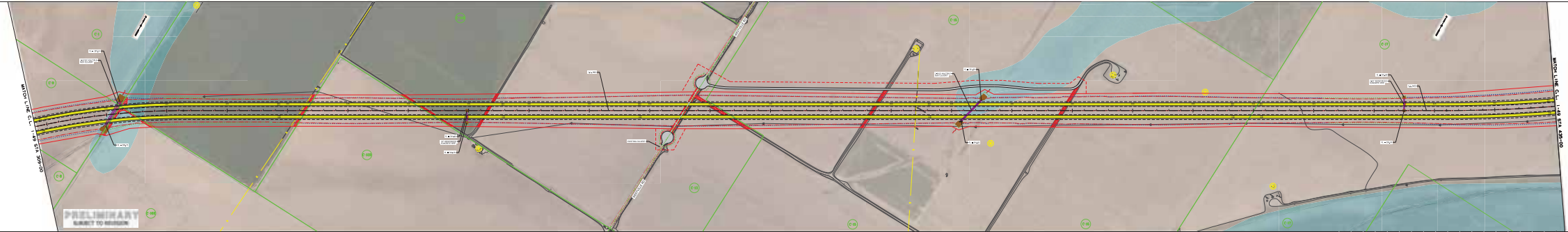
I-49 PROJECT
 HIGHWAY CLASSIFICATION
 URBAN FREEWAY



PRELIMINARY SUBJECT TO CHANGE BASED ON FURTHER DEVELOPMENTS INCLUDING ENVIRONMENTAL, SOCIAL AND TECHNICAL REVIEW.

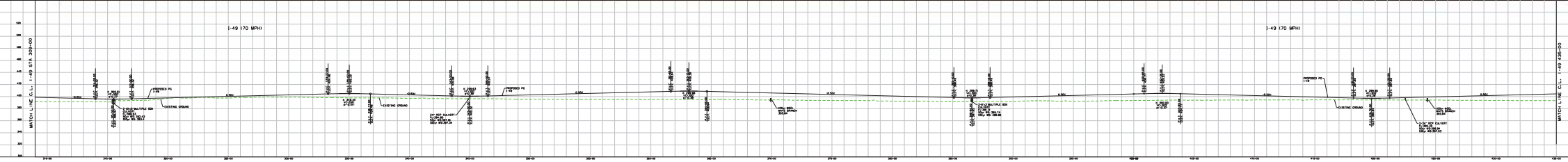
TABLE OF CONTENTS

SECTION	SHEET
PLAN/PROFILE	14
PROFILES	15



LEGEND

- Main Lanes
- System Ramps
- Cross Streets
- Frontage Roads
- Service Ramps (Diagonal)
- Concrete Open Bridge Structure
- Steel Bridge Structure
- Existing Roadway to Remains
- 100 Year Floodplain
- Bridge Substructure
- Proposed Storm Drains
- Sidewalk
- Divergency / Local Service Roads
- Concrete
- Existing STATE ROW
- Proposed ROW
- Temporary Construction Easement
- Road Shoulder
- Proposed Construction Limits CM
- Proposed Construction Limits PM
- Proposed Centerline / Baseline
- Proposed Retaining Wall
- Concrete Barrier
- Guardrail
- Property Line
- Pavement Removal
- Gas Well
- Gas Line



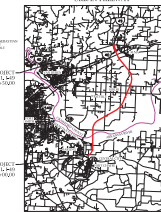
ARKANSAS DEPARTMENT OF TRANSPORTATION
 LOBBE TUDOR, P.L.C. - DIRECTOR
 PRELIMINARY DESIGN SCHEMATIC
 I-49 PROJECT
 CRAWFORD AND SEBASTIAN COUNTIES

FROM HIGHWAY 22 TO INTERSTATE 40
 JOB NO. 040748

PROJECT LENGTH - 14.4 MILES

ITEM	QUANTITY	UNIT
CONCRETE	1,200,000	CU YD
ASPHALT	1,500,000	CU YD
STEEL	10,000	TONS
WOOD	500	CU YD
GRAVEL	2,000,000	CU YD
EMULSION	100,000	CU YD
PAVEMENT REMOVAL	100,000	CU YD
UTILITY	100,000	CU YD
LAND ACQUISITION	100,000	CU YD
ENVIRONMENTAL	100,000	CU YD
CONSTRUCTION	100,000	CU YD
OPERATION	100,000	CU YD
MAINTENANCE	100,000	CU YD
RESEARCH	100,000	CU YD
TRAINING	100,000	CU YD
ADMINISTRATION	100,000	CU YD
PROFESSIONAL	100,000	CU YD
OTHER	100,000	CU YD

I-49 PROJECT
 HIGHWAY CLASSIFICATION
 URBAN FREEWAY



PRELIMINARY SUBJECT TO CHANGE BASED ON FURTHER DEVELOPMENTS INCLUDING ENVIRONMENTAL, SOCIAL AND TECHNICAL REVIEW.

TABLE OF CONTENTS

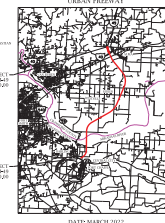
SECTION	SHEET
PLAN/PROFILE	14
PROFILES	15

ARKANSAS DEPARTMENT OF TRANSPORTATION
 LOBBE TUDOR, P.L.L.C. - DIRECTOR
 PRELIMINARY DESIGN SCHEMATIC
 I-49 PROJECT
 CRAWFORD AND SEASTIAN COUNTIES

FROM HIGHWAY 22 TO INTERSTATE 40
 JOB NO. 040748

PROJECT LENGTH - 14.4 MILES

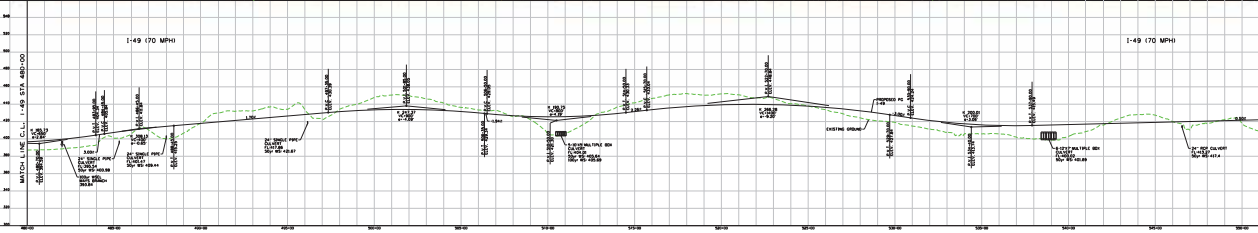
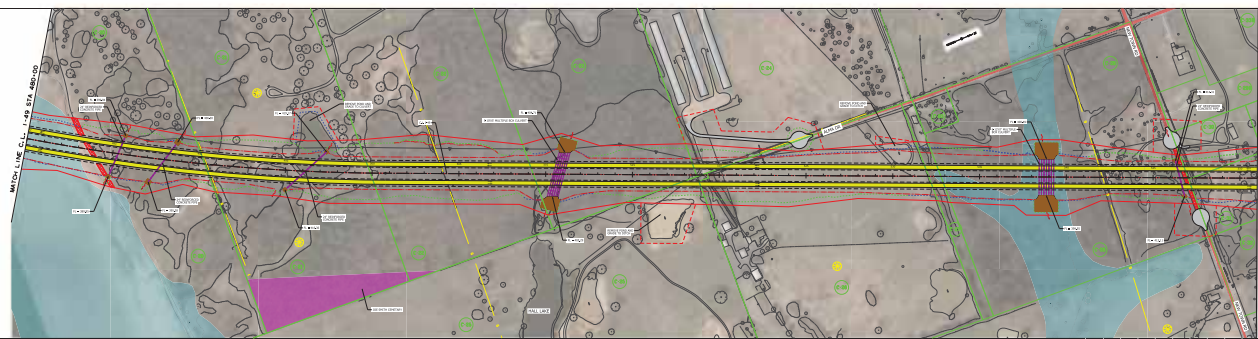
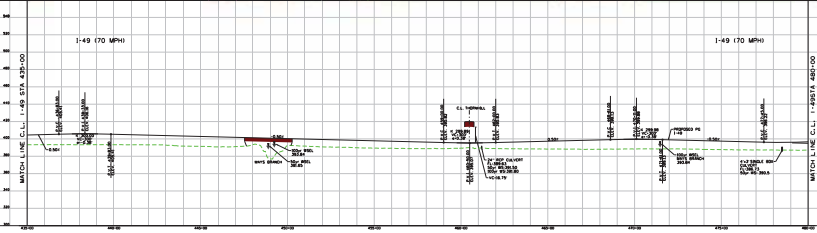
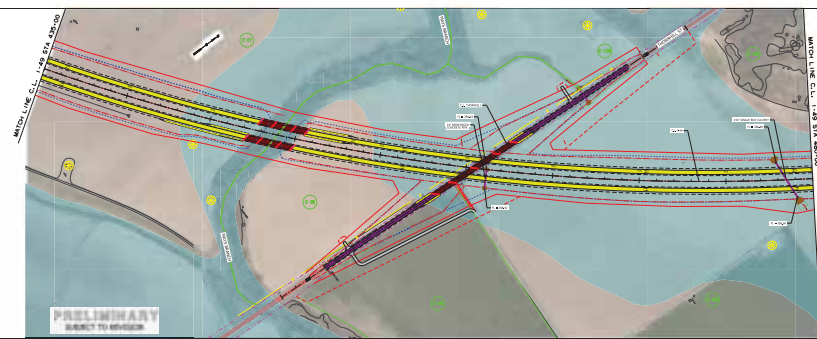
CONSTRUCTION	100%
DESIGN	100%
PERMITTING	100%
RIGHT-OF-WAY	100%
ENVIRONMENTAL	100%
UTILITY	100%
LAND ACQUISITION	100%
CONSTRUCTION	100%
OPERATION	100%



PRELIMINARY SUBJECT TO CHANGE BASED ON FURTHER DEVELOPMENTS INCLUDING ENVIRONMENTAL, SOCIAL AND TECHNICAL REVIEW.

TABLE OF CONTENTS

PLAN/PROFILE	141
PROFILES	142



LEGEND

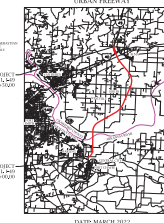
- Main Lanes
- Shoulder
- Frontage Roads
- Service Ramps (Diagonal/Top)
- Concrete Open Bridge Structure
- Steel Bridge Structure
- Bridge Substructure
- Proposed Storm Drains
- Shoulder
- Divergency / Local Service Roads
- Concrete
- Existing STATE ROW
- Proposed ROW
- Temporary Construction Easement
- Road Shoulder
- Proposed Construction Limits C&I
- Proposed Construction Limits III
- Proposed Centerline / Baseline
- Proposed Retaining Wall
- Concrete Barrier
- Guardrail
- Property Line
- Pavement Removal
- Gas Well
- Gas Line

ARKANSAS DEPARTMENT OF TRANSPORTATION
 LOBBE TUDOR, P.L.L.C. - DIRECTOR
 PRELIMINARY DESIGN SCHEMATIC
 I-49 PROJECT
 CRAWFORD AND SEASTIAN COUNTIES

FROM HIGHWAY 22 TO INTERSTATE 40
 JOB NO. 040748

PROJECT LENGTH - 14.4 MILES

CONSTRUCTION	100%
DESIGN	100%
PERMITTING	100%
RIGHT-OF-WAY	100%
ENVIRONMENTAL	100%
UTILITY	100%
LAND ACQUISITION	100%
CONSTRUCTION	100%
OPERATION	100%



PRELIMINARY SUBJECT TO CHANGE BASED ON FURTHER DEVELOPMENTS INCLUDING ENVIRONMENTAL, SOCIAL AND TECHNICAL REVIEW.

TABLE OF CONTENTS

PLAN/PROFILE	141
PROFILES	142



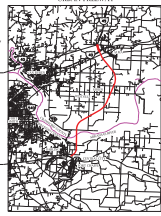
ARKANSAS DEPARTMENT OF TRANSPORTATION
 LOBBIE TUDOR, P.E., DIRECTOR
 PRELIMINARY DESIGN SCHEMATIC
 I-49 PROJECT
 CRAWFORD AND SEBASTIAN COUNTIES

FROM HIGHWAY 22 TO INTERSTATE 40
 JOB NO. 040748

PROJECT LENGTH - 14.4 MILES

ITEM	QUANTITY	UNIT
Right of Way	14.4	MILES
Construction	14.4	MILES
Interchange	1	INTERCHANGE
Overpass	1	OVERPASS
Underpass	1	UNDERPASS
Structure	1	STRUCTURE
Drainage	1	DRAINAGE
Signage	1	SIGNAGE
Lighting	1	LIGHTING
Sound Barrier	1	SOUND BARRIER
Gas Well	1	GAS WELL
Gas Line	1	GAS LINE

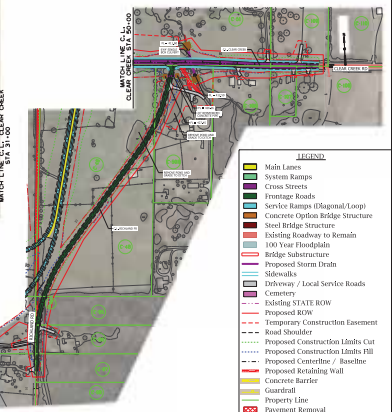
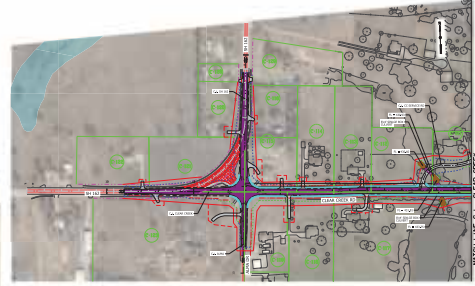
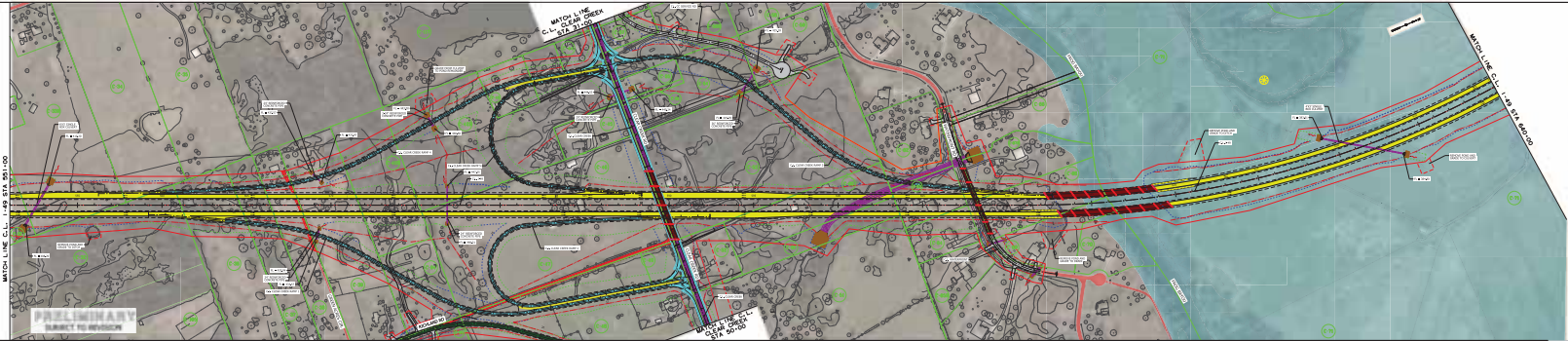
I-49 PROJECT
 HIGHWAY CLASSIFICATION
 URBAN FREEWAY



PRELIMINARY SUBJECT TO CHANGE BASED ON FURTHER DEVELOPMENTS INCLUDING ENVIRONMENTAL, SOCIAL AND TECHNICAL REVIEW.

TABLE OF CONTENTS

PLAN/PROFILE	SHEET
PLAN	14
PROFILE	15



LEGEND

- Main Lanes
- Shoulder
- Cross Streets
- Service Ramps
- Service Ramps (Diagonal/Loop)
- Concrete Open Bridge Structure
- Steel Bridge Structure
- Existing Roadway to Remains
- Bridge Substructure
- Proposed Storm Drain
- Driveway / Local Service Roads
- Concrete
- Existing STATE ROW
- Temporary Construction Easement
- Road Shoulder
- Proposed Construction Limits Cut
- Proposed Construction Limits Fill
- Proposed Centerline / Barrier
- Proposed Retaining Wall
- Concrete Barrier
- Soundwall
- Property Line
- Proposed Retaining
- Gas Well
- Gas Line

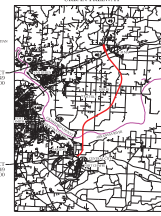
ARKANSAS DEPARTMENT OF TRANSPORTATION
 LOBBIE TUDOR, P.E., DIRECTOR
 PRELIMINARY DESIGN SCHEMATIC
 I-49 PROJECT
 CRAWFORD AND SEBASTIAN COUNTIES

FROM HIGHWAY 22 TO INTERSTATE 40
 JOB NO. 040748

PROJECT LENGTH - 14.4 MILES

ITEM	QUANTITY	UNIT
Right of Way	14.4	MILES
Construction	14.4	MILES
Interchange	1	INTERCHANGE
Overpass	1	OVERPASS
Underpass	1	UNDERPASS
Structure	1	STRUCTURE
Drainage	1	DRAINAGE
Signage	1	SIGNAGE
Lighting	1	LIGHTING
Sound Barrier	1	SOUND BARRIER
Gas Well	1	GAS WELL
Gas Line	1	GAS LINE

I-49 PROJECT
 HIGHWAY CLASSIFICATION
 URBAN FREEWAY



PRELIMINARY SUBJECT TO CHANGE BASED ON FURTHER DEVELOPMENTS INCLUDING ENVIRONMENTAL, SOCIAL AND TECHNICAL REVIEW.

TABLE OF CONTENTS

PLAN/PROFILE	SHEET
PLAN	14
PROFILE	15

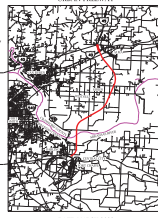
ARKANSAS DEPARTMENT OF TRANSPORTATION
 LOBBIE TUDOR, P.E., DIRECTOR
 PRELIMINARY DESIGN SCHEMATIC
 I-49 PROJECT
 CRAWFORD AND SEBASTIAN COUNTIES

FROM HIGHWAY 22 TO INTERSTATE 40
 JOB NO. 040748

PROJECT LENGTH - 14.4 MILES

ITEM	QUANTITY	UNIT
Right-of-Way	14.4	MILES
Construction	14.4	MILES
Maintenance	14.4	MILES
Other	14.4	MILES

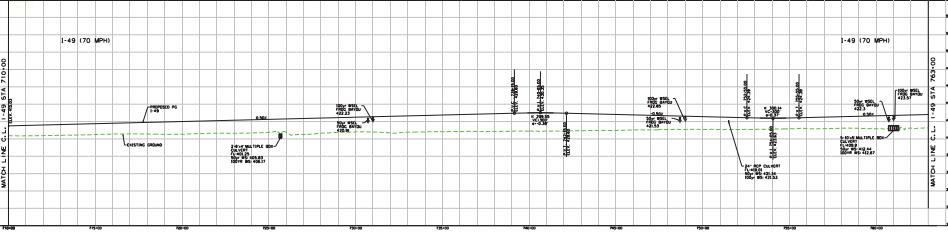
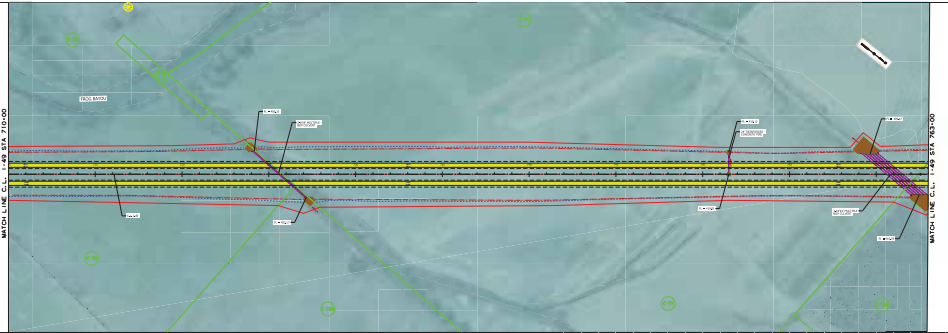
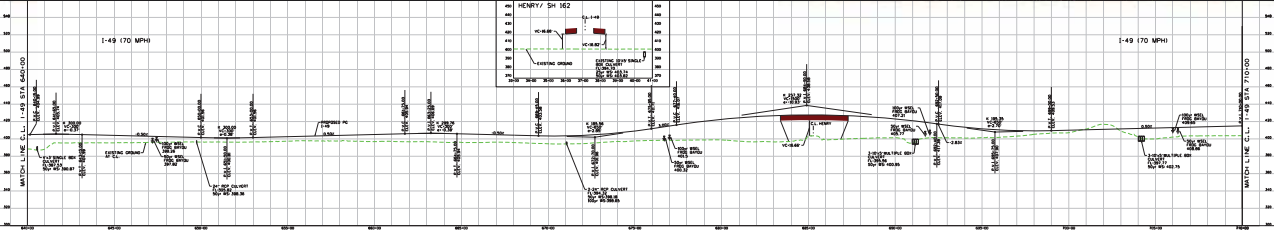
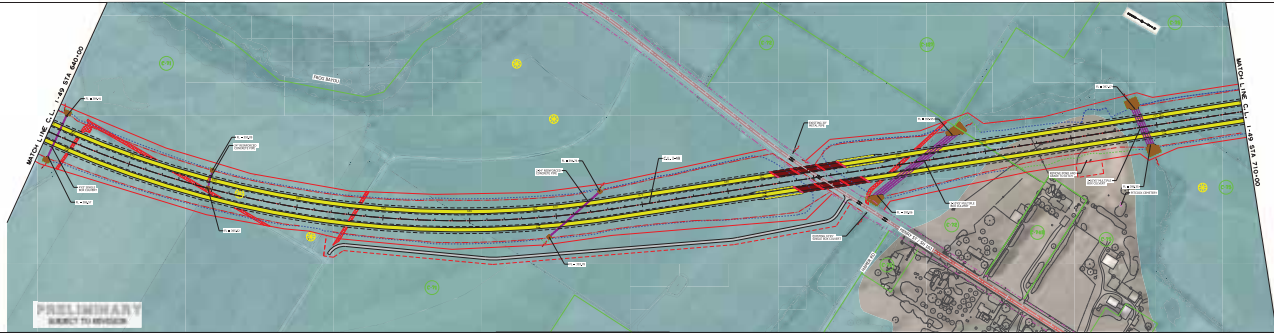
I-49 PROJECT
 HIGHWAY CLASSIFICATION
 URBAN FREEWAY



PRELIMINARY SUBJECT TO CHANGE BASED ON FURTHER DEVELOPMENTS INCLUDING TRAFFIC, ENVIRONMENTAL, AND TECHNICAL REVIEW.

TABLE OF CONTENTS

NO.	DESCRIPTION	SHEET NO.
1	PLAN/PROFILE	14
2	PROFILES	15



- LEGEND
- Main Lanes
 - Shoulder
 - Frontage Roads
 - Service Ramps (Diagonal/Loop)
 - Concrete Open Bridge Structure
 - Steel Bridge Structure
 - Existing Roadway to Remain
 - 100 Year Floodplain
 - Bridge Substructure
 - Proposed Storm Drains
 - Shoulder
 - Diversion / Local Service Roads
 - Concrete
 - Existing STATE ROW
 - Proposed ROW
 - Temporary Construction Easement
 - Road Shoulder
 - Proposed Construction Limits CM
 - Proposed Construction Limits PM
 - Proposed Centerline / Baseline
 - Proposed Retaining Wall
 - Concrete Barrier
 - Guardrail
 - Property Line
 - Pavement Removal
 - Gas Well
 - Gas Line

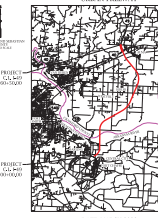
ARKANSAS DEPARTMENT OF TRANSPORTATION
 LOBBIE TUDOR, P.E., DIRECTOR
 PRELIMINARY DESIGN SCHEMATIC
 I-49 PROJECT
 CRAWFORD AND SEBASTIAN COUNTIES

FROM HIGHWAY 22 TO INTERSTATE 40
 JOB NO. 040748

PROJECT LENGTH - 14.4 MILES

ITEM	QUANTITY	UNIT
Right-of-Way	14.4	MILES
Construction	14.4	MILES
Maintenance	14.4	MILES
Other	14.4	MILES

I-49 PROJECT
 HIGHWAY CLASSIFICATION
 URBAN FREEWAY



PRELIMINARY SUBJECT TO CHANGE BASED ON FURTHER DEVELOPMENTS INCLUDING TRAFFIC, ENVIRONMENTAL, AND TECHNICAL REVIEW.

TABLE OF CONTENTS

NO.	DESCRIPTION	SHEET NO.
1	PLAN/PROFILE	14
2	PROFILES	15

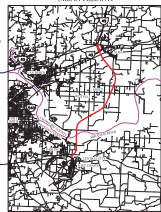
ARKANSAS DEPARTMENT OF TRANSPORTATION
 LOBIE TUDOR, P.E., DIRECTOR
 PRELIMINARY DESIGN SCHEMATIC
 I-49 PROJECT
 CRAWFORD AND SEBASTIAN COUNTIES

2-49
 FROM HIGHWAY 22 TO INTERSTATE 40
 JOB NO. 040748

PROJECT LENGTH - 14.4 MILES

ITEM	QUANTITY	UNIT	AMOUNT
CONCRETE	1,234,567	CU YD	1,234,567
ASPHALT	1,234,567	CU YD	1,234,567
STEEL	1,234,567	TONS	1,234,567
GRANULAR	1,234,567	CU YD	1,234,567
PAVEMENT	1,234,567	CU YD	1,234,567
STRUCTURE	1,234,567	CU YD	1,234,567
UTILITY	1,234,567	CU YD	1,234,567
LANDSCAPE	1,234,567	CU YD	1,234,567
TRUCK	1,234,567	CU YD	1,234,567
WATER	1,234,567	CU YD	1,234,567
SEWER	1,234,567	CU YD	1,234,567
STORM	1,234,567	CU YD	1,234,567
RETAINING	1,234,567	CU YD	1,234,567
WALL	1,234,567	CU YD	1,234,567
CONCRETE	1,234,567	CU YD	1,234,567
ASPHALT	1,234,567	CU YD	1,234,567
STEEL	1,234,567	TONS	1,234,567
GRANULAR	1,234,567	CU YD	1,234,567
PAVEMENT	1,234,567	CU YD	1,234,567
STRUCTURE	1,234,567	CU YD	1,234,567
UTILITY	1,234,567	CU YD	1,234,567
LANDSCAPE	1,234,567	CU YD	1,234,567
TRUCK	1,234,567	CU YD	1,234,567
WATER	1,234,567	CU YD	1,234,567
SEWER	1,234,567	CU YD	1,234,567
STORM	1,234,567	CU YD	1,234,567
RETAINING	1,234,567	CU YD	1,234,567
WALL	1,234,567	CU YD	1,234,567

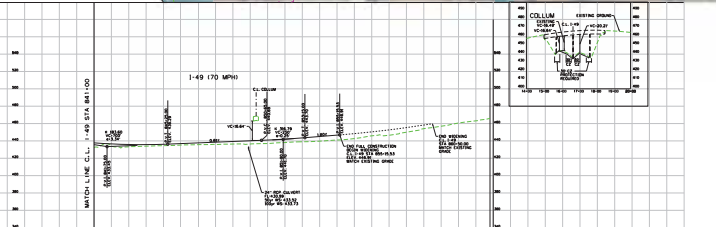
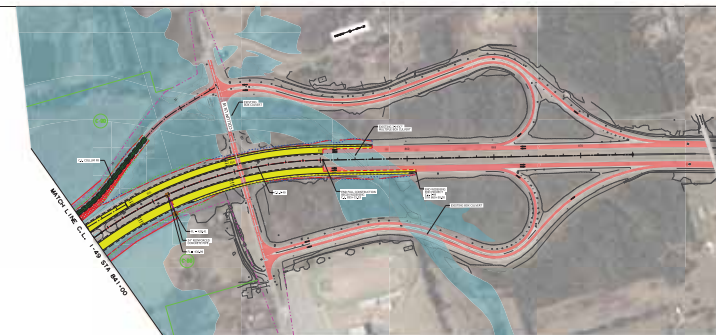
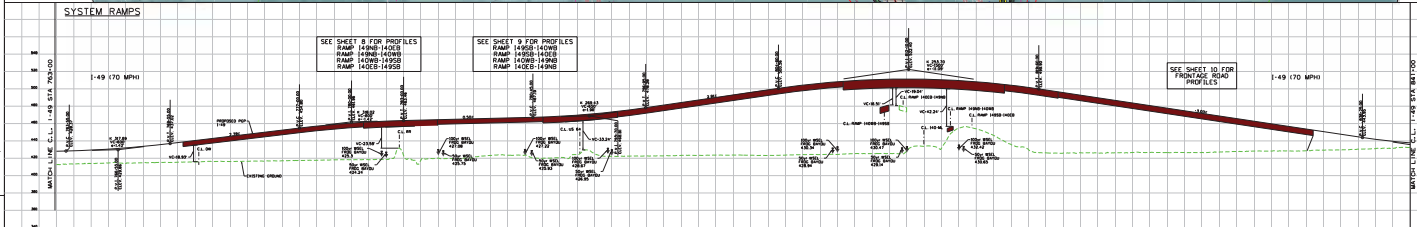
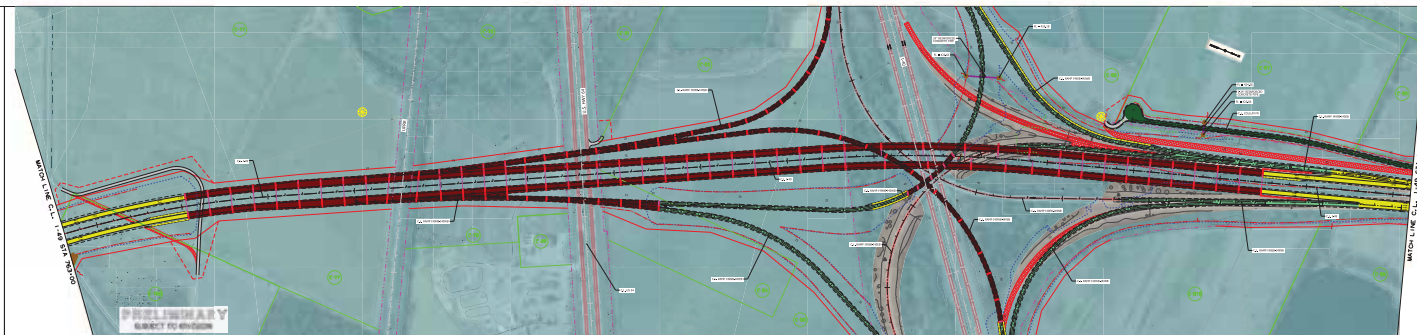
4-49 PROJECT
 HIGHWAY CLASSIFICATION
 URBAN FREIGHT



PRELIMINARY SUBJECT TO CHANGE BASED ON FURTHER DEVELOPMENTS INCLUDING GEOTECHNICAL DATA AND TECHNICAL REVIEW.

TABLE OF CONTENTS

NO.	DESCRIPTION	SHEET NO.
1	PLAN/PROFILE	14
2	PROFILES	15



LEGEND

- Main Lanes
- System Ramps
- Cross Streets
- Frontage Roads
- Service Ramps (Diagonal Turn)
- Concrete Open Bridge Structure
- Steel Bridge Structure
- Existing Roadway to Remain
- 100 Year Floodplain
- Bridge Substructure
- Proposed Storm Drains
- Shoulders
- Divergency / Local Service Roads
- Centerline
- Existing STATE ROW
- Proposed ROW
- Temporary Construction Easement
- Road Shoulder
- Proposed Construction Limits (CL)
- Proposed Construction Limits (PL)
- Proposed Centerline / Baseline
- Proposed Retaining Wall
- Concrete Barrier
- Guardrail
- Property Line
- Pavement Removal
- Gas Well
- Gas Line

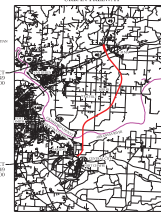
ARKANSAS DEPARTMENT OF TRANSPORTATION
 LOBIE TUDOR, P.E., DIRECTOR
 PRELIMINARY DESIGN SCHEMATIC
 I-49 PROJECT
 CRAWFORD AND SEBASTIAN COUNTIES

2-49
 FROM HIGHWAY 22 TO INTERSTATE 40
 JOB NO. 040748

PROJECT LENGTH - 14.4 MILES

ITEM	QUANTITY	UNIT	AMOUNT
CONCRETE	1,234,567	CU YD	1,234,567
ASPHALT	1,234,567	CU YD	1,234,567
STEEL	1,234,567	TONS	1,234,567
GRANULAR	1,234,567	CU YD	1,234,567
PAVEMENT	1,234,567	CU YD	1,234,567
STRUCTURE	1,234,567	CU YD	1,234,567
UTILITY	1,234,567	CU YD	1,234,567
LANDSCAPE	1,234,567	CU YD	1,234,567
TRUCK	1,234,567	CU YD	1,234,567
WATER	1,234,567	CU YD	1,234,567
SEWER	1,234,567	CU YD	1,234,567
STORM	1,234,567	CU YD	1,234,567
RETAINING	1,234,567	CU YD	1,234,567
WALL	1,234,567	CU YD	1,234,567

4-49 PROJECT
 HIGHWAY CLASSIFICATION
 URBAN FREIGHT



PRELIMINARY SUBJECT TO CHANGE BASED ON FURTHER DEVELOPMENTS INCLUDING GEOTECHNICAL DATA AND TECHNICAL REVIEW.

TABLE OF CONTENTS

NO.	DESCRIPTION	SHEET NO.
1	PLAN/PROFILE	14
2	PROFILES	15



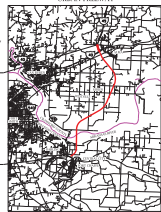
ARKANSAS DEPARTMENT OF TRANSPORTATION
 LOBBIE TUDOR, P.E., DIRECTOR
 PRELIMINARY DESIGN SCHEMATIC
 I-49 PROJECT
 CRAWFORD AND SEBASTIAN COUNTIES

FROM HIGHWAY 22 TO INTERSTATE 40
 JOB NO. 040748

PROJECT LENGTH - 14.4 MILES

CONSTRUCTION	100%
DESIGN	100%
PERMITS	100%
RIGHT-OF-WAY	100%
UTILITY	100%
ENVIRONMENTAL	100%
LAND ACQUISITION	100%
CONSTRUCTION	100%
OPERATION	100%

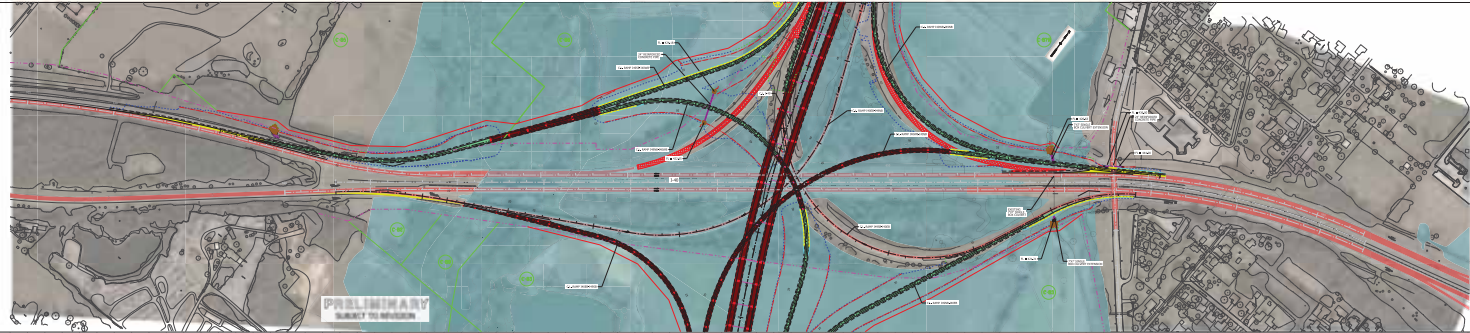
I-49 PROJECT
 HIGHWAY CLASSIFICATION
 URBAN FREEWAY



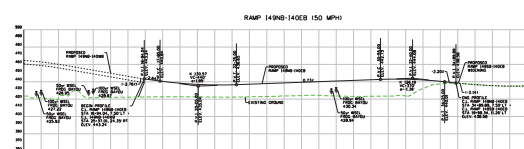
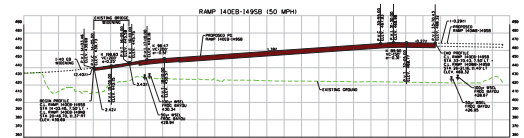
PRELIMINARY SUBJECT TO CHANGE BASED ON FURTHER DEVELOPMENTS INCLUDING ENVIRONMENTAL, SOCIAL AND TECHNICAL REVIEW.

TABLE OF CONTENTS

PLAN/PROFILE	14
PROFILES	15



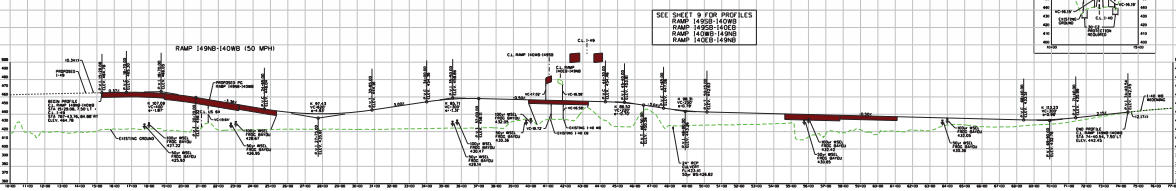
PRELIMINARY SUBJECT TO CHANGE



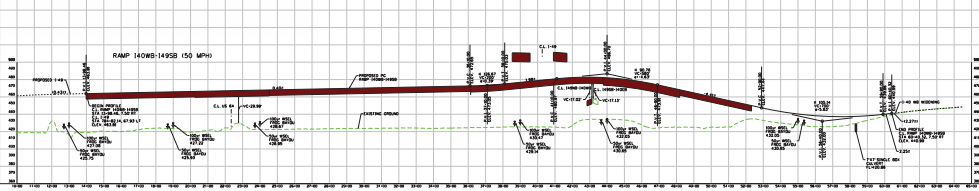
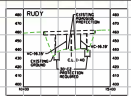
LEGEND

- Main Lanes
- System Ramps
- Cross Streets
- Frontage Roads
- Service Ramps (Signalized/Unsignalized)
- Concrete Open Span Bridge Structure
- Steel Bridge Structure
- Bridge Substructure
- 100 Year Floodplain
- Proposed Storm Drains
- Shoulders
- Divergency / Local Service Roads
- Centerline
- Existing STATE ROW
- Proposed ROW
- Temporary Construction Easement
- Road Shoulder
- Proposed Construction Limits CM
- Proposed Construction Limits PM
- Proposed Centerline / Baseline
- Proposed Retaining Wall
- Concrete Barrier
- Guardrail
- Property Line
- Placement Removal
- Gas Well
- Gas Line

SYSTEM RAMPS (CONTINUED)



SEE SHEET 9 FOR PROFILES
 RAMP 1405B-1404B
 RAMP 1406B-1405B
 RAMP 1407B-1406B



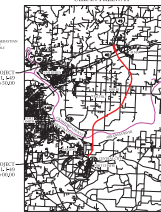
ARKANSAS DEPARTMENT OF TRANSPORTATION
 LOBBIE TUDOR, P.E., DIRECTOR
 PRELIMINARY DESIGN SCHEMATIC
 I-49 PROJECT
 CRAWFORD AND SEBASTIAN COUNTIES

FROM HIGHWAY 22 TO INTERSTATE 40
 JOB NO. 040748

PROJECT LENGTH - 14.4 MILES

CONSTRUCTION	100%
DESIGN	100%
PERMITS	100%
RIGHT-OF-WAY	100%
UTILITY	100%
ENVIRONMENTAL	100%
LAND ACQUISITION	100%
CONSTRUCTION	100%
OPERATION	100%

I-49 PROJECT
 HIGHWAY CLASSIFICATION
 URBAN FREEWAY



PRELIMINARY SUBJECT TO CHANGE BASED ON FURTHER DEVELOPMENTS INCLUDING ENVIRONMENTAL, SOCIAL AND TECHNICAL REVIEW.

TABLE OF CONTENTS

PLAN/PROFILE	14
PROFILES	15

PROJECT LENGTH - TOTAL MILES	PROJECT LENGTH - THIS SHEET
1.00	0.25

DESIGN SPEED: 55 MPH

DESIGN CLASSIC CLASS

DESIGN CLASSIC CLASS

DESIGN CLASSIC CLASS

DESIGN CLASSIC CLASS

DESIGN CLASSIC CLASS

DESIGN CLASSIC CLASS

DESIGN CLASSIC CLASS

DESIGN CLASSIC CLASS

DESIGN CLASSIC CLASS

DESIGN CLASSIC CLASS

DESIGN CLASSIC CLASS

DESIGN CLASSIC CLASS

DESIGN CLASSIC CLASS

DESIGN CLASSIC CLASS

DESIGN CLASSIC CLASS

DESIGN CLASSIC CLASS

DESIGN CLASSIC CLASS

DESIGN CLASSIC CLASS

DESIGN CLASSIC CLASS

DESIGN CLASSIC CLASS

DESIGN CLASSIC CLASS

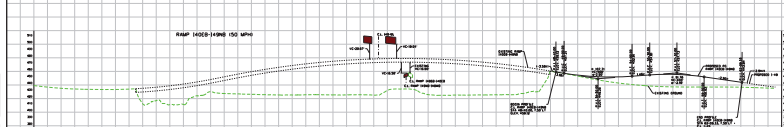
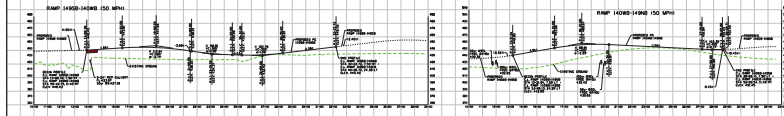
DESIGN CLASSIC CLASS

DESIGN CLASSIC CLASS

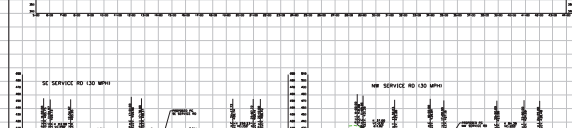
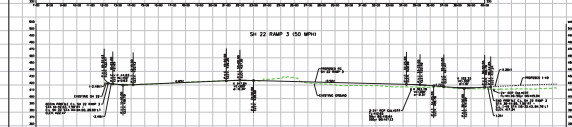
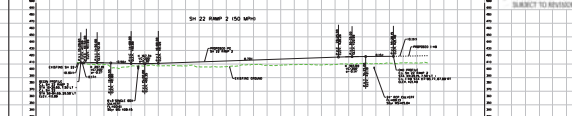
DESIGN CLASSIC CLASS

DESIGN CLASSIC CLASS

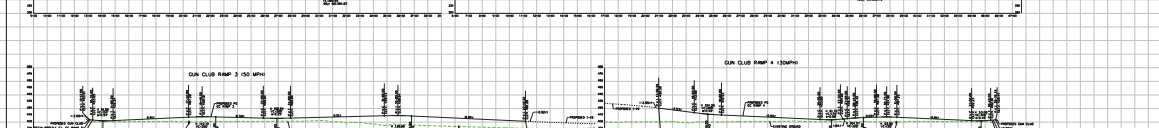
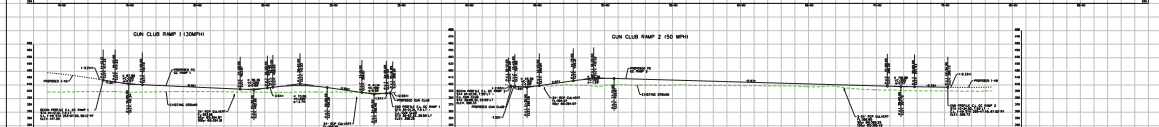
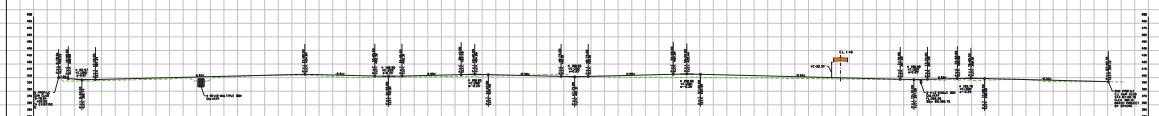
SYSTEM RAMPS (CONTINUED)



SH 22 VICINITY



PRELIMINARY SUBJECT TO REVISION



PROJECT LENGTH - TOTAL MILES	PROJECT LENGTH - THIS SHEET
1.00	0.25

DESIGN SPEED: 55 MPH

DESIGN CLASSIC CLASS

DESIGN CLASSIC CLASS

DESIGN CLASSIC CLASS

DESIGN CLASSIC CLASS

DESIGN CLASSIC CLASS

DESIGN CLASSIC CLASS

DESIGN CLASSIC CLASS

DESIGN CLASSIC CLASS

DESIGN CLASSIC CLASS

DESIGN CLASSIC CLASS

DESIGN CLASSIC CLASS

DESIGN CLASSIC CLASS

DESIGN CLASSIC CLASS

DESIGN CLASSIC CLASS

DESIGN CLASSIC CLASS

DESIGN CLASSIC CLASS

DESIGN CLASSIC CLASS

DESIGN CLASSIC CLASS

DESIGN CLASSIC CLASS

DESIGN CLASSIC CLASS

DESIGN CLASSIC CLASS

DESIGN CLASSIC CLASS

DESIGN CLASSIC CLASS

DESIGN CLASSIC CLASS

DESIGN CLASSIC CLASS



ARKANSAS DEPARTMENT OF TRANSPORTATION

STATE ROAD 24 - WEST TO
PRELIMINARY DESIGN SCHEMATIC
AND PROJECT
CRAWFORD AND SEBASTIAN COUNTIES

DATE:
FROM DESIGN TO INTERSTATE 49
JOB NO. 040704

PROJECT LENGTH - 14.4 MILES

SECTION	LENGTH (MILES)
SECTION 1	1.0
SECTION 2	1.0
SECTION 3	1.0
SECTION 4	1.0
SECTION 5	1.0
SECTION 6	1.0
SECTION 7	1.0
SECTION 8	1.0
SECTION 9	1.0
SECTION 10	1.0
SECTION 11	1.0
SECTION 12	1.0
SECTION 13	1.0
SECTION 14	1.0

DESIGN SPEED:
SECTION 1-14: 40 MPH

SECTION 15: 40 MPH

SECTION 16: 40 MPH

SECTION 17: 40 MPH

SECTION 18: 40 MPH

SECTION 19: 40 MPH

SECTION 20: 40 MPH

SECTION 21: 40 MPH

SECTION 22: 40 MPH

SECTION 23: 40 MPH

SECTION 24: 40 MPH

SECTION 25: 40 MPH

SECTION 26: 40 MPH

SECTION 27: 40 MPH

SECTION 28: 40 MPH

SECTION 29: 40 MPH

SECTION 30: 40 MPH

SECTION 31: 40 MPH

SECTION 32: 40 MPH

SECTION 33: 40 MPH

SECTION 34: 40 MPH

SECTION 35: 40 MPH

SECTION 36: 40 MPH

SECTION 37: 40 MPH

SECTION 38: 40 MPH

SECTION 39: 40 MPH

SECTION 40: 40 MPH

SECTION 41: 40 MPH

SECTION 42: 40 MPH

SECTION 43: 40 MPH

SECTION 44: 40 MPH

SECTION 45: 40 MPH

SECTION 46: 40 MPH

SECTION 47: 40 MPH

SECTION 48: 40 MPH

SECTION 49: 40 MPH

SECTION 50: 40 MPH

SECTION 51: 40 MPH

SECTION 52: 40 MPH

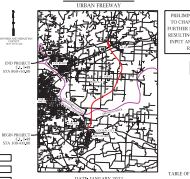
SECTION 53: 40 MPH

SECTION 54: 40 MPH

SECTION 55: 40 MPH

SECTION 56: 40 MPH

SECTION 57: 40 MPH



DATE: 08/14/2012
DRAWN BY: J. B. BROWN
CHECKED BY: J. B. BROWN
SCALE: AS SHOWN
SHEET 10 OF 10

HNTB

AMERICAN
ARCHITECTS
INC.

ARCHITECTS

INC.

INC.

INC.

INC.

INC.

INC.

INC.

INC.

INC.

INC.

INC.

INC.

INC.

INC.

INC.

INC.

INC.

INC.

INC.

INC.

INC.

INC.

INC.

INC.

INC.

INC.

INC.

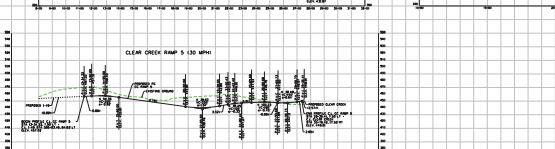
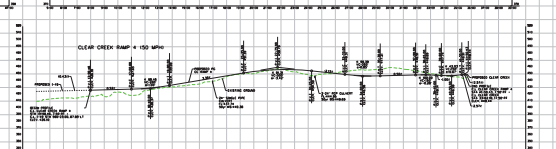
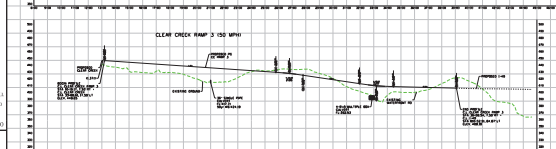
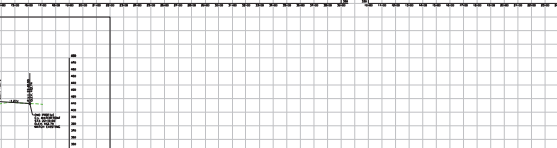
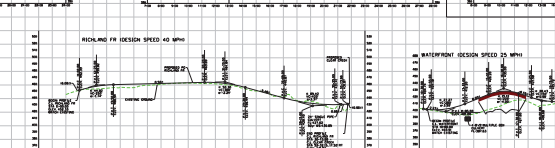
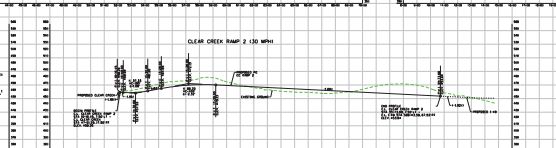
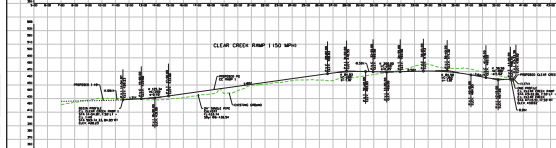
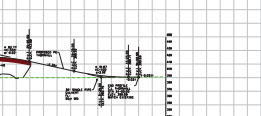
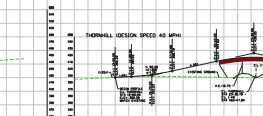
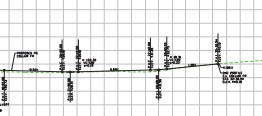
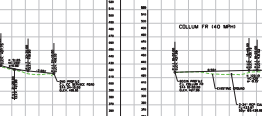
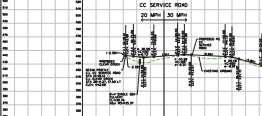
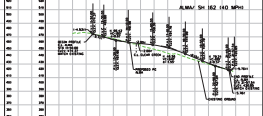
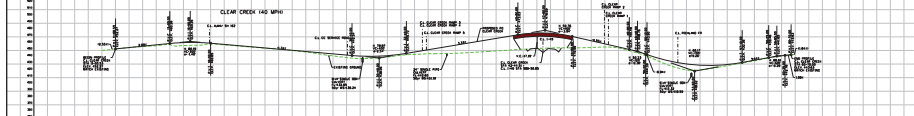
INC.

INC.

INC.

INC.

CLEAR CREEK VICINITY



PRELIMINARY
SUBJECT TO REVISION

ARKANSAS DEPARTMENT OF TRANSPORTATION

STATE ROAD 24 - WEST TO
PRELIMINARY DESIGN SCHEMATIC
AND PROJECT
CRAWFORD AND SEBASTIAN COUNTIES

DATE:
FROM DESIGN TO INTERSTATE 49
JOB NO. 040704

PROJECT LENGTH - 14.4 MILES

SECTION	LENGTH (MILES)
SECTION 1	1.0
SECTION 2	1.0
SECTION 3	1.0
SECTION 4	1.0
SECTION 5	1.0
SECTION 6	1.0
SECTION 7	1.0
SECTION 8	1.0
SECTION 9	1.0
SECTION 10	1.0
SECTION 11	1.0
SECTION 12	1.0
SECTION 13	1.0
SECTION 14	1.0

DESIGN SPEED:
SECTION 1-14: 40 MPH

SECTION 15: 40 MPH

SECTION 16: 40 MPH

SECTION 17: 40 MPH

SECTION 18: 40 MPH

SECTION 19: 40 MPH

SECTION 20: 40 MPH

SECTION 21: 40 MPH

SECTION 22: 40 MPH

SECTION 23: 40 MPH

SECTION 24: 40 MPH

SECTION 25: 40 MPH

SECTION 26: 40 MPH

SECTION 27: 40 MPH

SECTION 28: 40 MPH

SECTION 29: 40 MPH

SECTION 30: 40 MPH

SECTION 31: 40 MPH

SECTION 32: 40 MPH

SECTION 33: 40 MPH

SECTION 34: 40 MPH

SECTION 35: 40 MPH

SECTION 36: 40 MPH

SECTION 37: 40 MPH

SECTION 38: 40 MPH

SECTION 39: 40 MPH

SECTION 40: 40 MPH

SECTION 41: 40 MPH

SECTION 42: 40 MPH

SECTION 43: 40 MPH

SECTION 44: 40 MPH

SECTION 45: 40 MPH

SECTION 46: 40 MPH

SECTION 47: 40 MPH

SECTION 48: 40 MPH

SECTION 49: 40 MPH

SECTION 50: 40 MPH

SECTION 51: 40 MPH

SECTION 52: 40 MPH

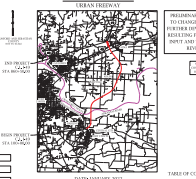
SECTION 53: 40 MPH

SECTION 54: 40 MPH

SECTION 55: 40 MPH

SECTION 56: 40 MPH

SECTION 57: 40 MPH



DATE: 08/14/2012
DRAWN BY: J. B. BROWN
CHECKED BY: J. B. BROWN
SCALE: AS SHOWN
SHEET 10 OF 10

HNTB

AMERICAN
ARCHITECTS
INC.

ARCHITECTS

INC.

INC.

INC.

INC.

INC.

INC.

INC.

INC.

INC.

INC.

INC.

INC.

INC.

INC.

INC.

INC.

INC.

INC.

INC.

INC.

INC.

INC.

INC.

INC.

INC.

INC.

INC.

INC.

INC.

INC.

INC.