



Bridge #06611(Routine, Underwater type 2)

US 371- 03 -16.17 over OZAN CREEK

Location: 3 MI S JCT SH 195

Team Lead: Charlie Rogers **Inspection Date:** January 05, 2022



Latitude:33.88252, Longitude:-93.59971

Route:371 Section:03 Log:16.17

Arnold Road ID:29x371x3xA, Arnold Log mile:16.151

District 03, Hempstead County

Owner: 1-State Highway Agency

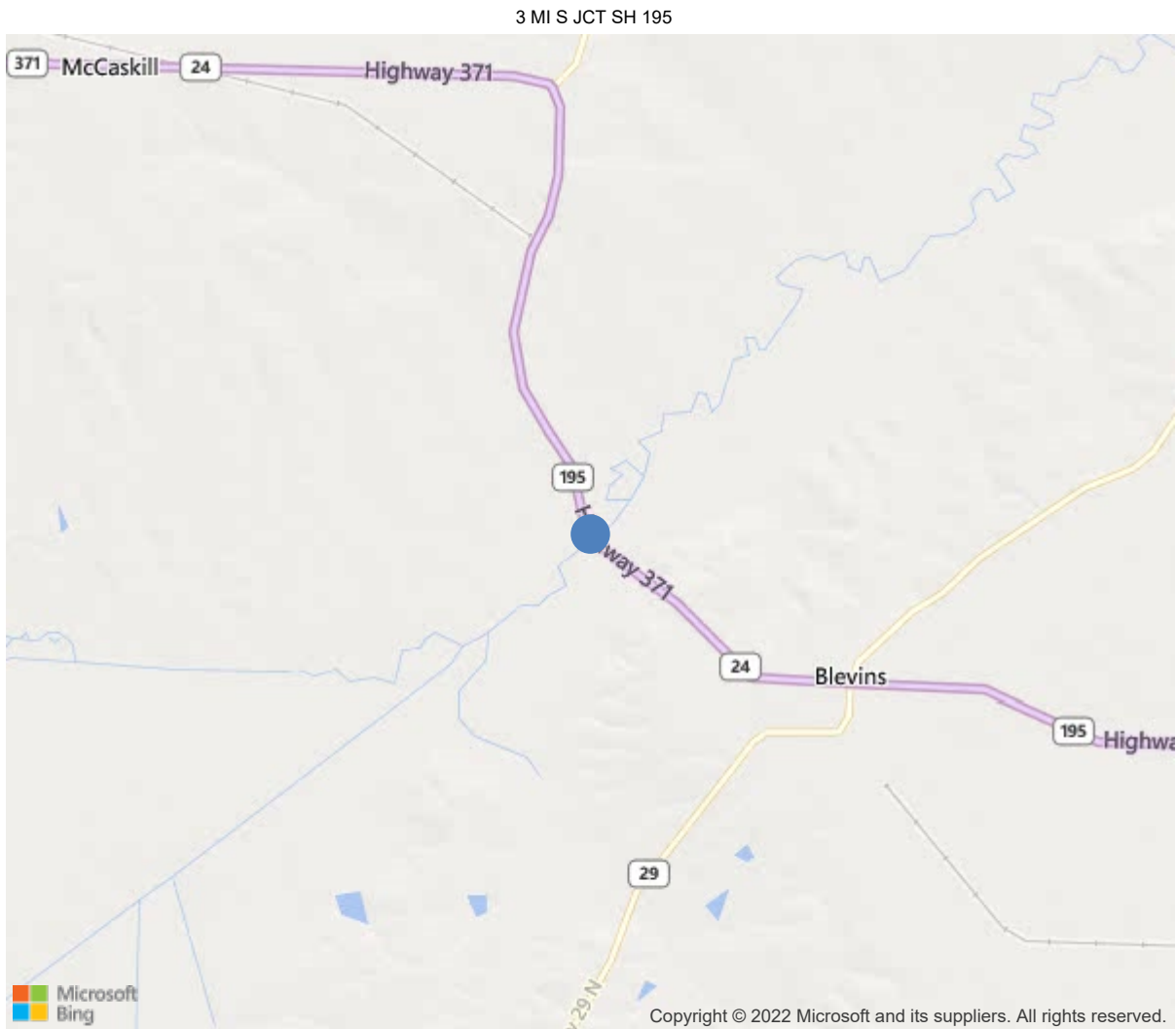


Bridge #06611(Routine, Underwater type 2)

US 371- 03 -16.17 over OZAN CREEK

Location: 3 MI S JCT SH 195

Team Lead: Charlie Rogers **Inspection Date:** January 05, 2022



33.88252, -93.59971

Inspection Direction : N to S



Bridge #06611(Routine, Underwater type 2)

US 371- 03 -16.17 over OZAN CREEK

Location: 3 MI S JCT SH 195

Team Lead: Charlie Rogers Inspection Date: January 05, 2022

IDENTIFICATION	
(1) State Names	Arkansas
(8) Structure Number	06611
(5) Inventory Route	371
(2) Highway Agency District	03
(3) County Code	57-Hempstead County, Arkansas
(4) Place Code	0
(6) Features Intersected	OZAN CREEK
(7) Facility Carried	US 371- 03 -16.17
(9) Location	3 MI S JCT SH 195
(11) Mile Point	16.17 mi
(12) Base Highway Network	No
(13) LRS Inventory Rte & Subrte	0000000000
(16) Latitude	33.88252
(17) Longitude	-93.59971
(98) Border Bridge State Code	
(99) Border Bridge Structure No.	
STRUCTURE TYPE AND MATERIAL	
(43) Main Structure Type	42
Material	4-Steel continuous
Type	2-Stringer/Multi-beam or girder
(44) Approach Structure Type	00
Material	0-Other
Type	0-Other
(45) No. of Spans in Main Unit	5
(46) No. of Approach Spans	0
(107) Deck Structure Type	1-Concrete Cast-in-Place
(108) Wearing Surface/Protective System	
Type of Wearing Surface	1-Monolithic Concrete (concurrently placed
Type of Membrane	0-None
Type of Deck Protection	1-Epoxy Coated Reinforcing
AGE AND SERVICE	
(27) Year Built	1996
(106) Year Reconstructed	0
(42) Type of Service	15
On	1-Highway
Under	5-Waterway
(28) Lane	
On	2
Under	0
(29) Average Daily Traffic	2000
(30) Year of ADT	2014
(109) Truck ADT	24 %
(19) Bypass, Detour Length	30 mi
GEOMETRIC DATA	
(48) Length of Maximum Span	80 ft
(49) Structure Length	302 ft
(50) Curb or Sidewalk Width	
Left	0 ft
Right	0 ft
(51) Bridge Roadway Width Curb to Curb	40 ft
(52) Deck Width Out to Out	42.9 ft
(32) Approach Roadway Width (W/Shoulders)	40 ft
(33) Bridge Median	0-No median
(34) Skew	0 Deg
(35) Structure Flared	No flare
(10) Inventory Route Min Vert Clear	99.99 ft
(47) Inventory Route Total Horiz Clear	40.4 ft
(53) Min Vert Clear Over Bridge Rdwy	99.99 ft
(54) Min Vert Underclear	0 ft
Ref:	
(55) Min Lat Underclear RT	99.9 ft
Ref:	
(56) Min Lat Underclear LT	0 ft
NAVIGATION DATA	
(38) Navigation Control	0-No navigation control on water
(111) Pier Protection	1-Navigation protection not requ
(39) Navigation Vertical Clearance	0 ft
(116) Vert-Lift Bridge Nav Min Vert Clear	0 ft
(40) Navigation Horizontal Clearance	0 ft

CLASSIFICATION	
(112) NBIS Bridge Length	Y
(104) Highway System	0
(26) Functional Class	7-Rural Major Collector
(100) Defense Highway	0-The inventory route is not a S
(101) Parallel Structure	N-No parallel structure exists.
(102) Direction of Traffic	2 - way traffic
(103) Temporary Structure	
(105) Federal Lands Highways	0-N/A
(110) Designated National Network	0-The inventory route is not part of
(20) Toll	3-On free road. The structure is toll-
(21) Maintain	1-State Highway Agency
(22) Owner	1-State Highway Agency
(37) Historical Significance	5-Bridge is not eligible for the NRHP
CONDITION	
(58) Deck	7
(59) Superstructure	8
(60) Substructure	8
(61) Channel & Channel Protection	8
(62) Culverts	N
LOAD RATING AND POSTING	
(31) Design Load	5-MS 18 / HS 20
(63) Operating Rating Method	1
(64) Operating Rating	
Type	1-Load Factor(LF)
Rating	60
(65) Inventory Rating Method	1-Load Factor(LF)
(66) Inventory Rating	
Type	5
Rating	36
(70) Bridge Posting	5-Equal to or above legal loads
(41) Structure Open/Posted/Closed	A-Open, no restriction
APPRAISAL	
(67) Structural Evaluation	8
(68) Deck Geometry	7
(69) Clearances, Vertical/Horizontal	N
(71) Waterway Adequacy	8
(72) Approach Roadway Alignment	7
(36A) Bridge Railings	1-Inspected feature meets currently a
(36B) Transitions	1-Inspected feature meets currently a
(36C) Approach Guardrail	1-Inspected feature meets currently a
(36D) Approach Guardrail Ends	1-Inspected feature meets currently a
(113) Scour Critical Bridges	5-Bridge foundations determined to be
PROPOSED IMPROVEMENTS	
(75) Type of Work	
(76) Length of Structure Improvement	0 ft
(94) Bridge Improvement Cost	\$ 0
(95) Roadway Improvement Cost	\$ 0
(96) Total Project Cost	\$ 0
(97) Year of Improvement Cost Estimate	0
(114) Future ADT	2371
(115) Year of Future ADT	2028

INSPECTIONS *			
(90) Inspection Date			01/2022
(91) Frequency			24 Months
(92) Critical Feature Inspection	Done	Freq. (Mon)	Date
A: Fracture Critical Detail	No		
B: Underwater Inspection	No		
C: Other Special Inspection	No		
* The inspection date and frequency information in this box contains the current NBI date and frequency information. Please refer to the report header for the date this inspection was conducted.			



Bridge #06611 (Routine, Underwater type 2)

US 371- 03 -16.17 over OZAN CREEK

Location: 3 MI S JCT SH 195

Team Lead: Charlie Rogers, Inspection Date: January 05, 2022

ELEM	DESCRIPTION	UNITS	TOTAL	CS1	CS2	CS3	CS4
12	Reinforced Concrete Deck	SF	12955	12675	280	0	0
1130	Cracking (RC and Other)	SF	280	0	280	0	0
(12)	CONCRETE DECK HAS COATED BARS. SMALL CRACKS IN DECK..						
107	Steel Open Girder/Beam	LF	1800	1800	0	0	0
515	Steel Protective Coating	SF	16398	16398	0	0	0
205	Reinforced Concrete Column	EA	10	10	0	0	0
215	Reinforced Concrete Abutment	LF	124	124	0	0	0
225	Steel Pile	EA	12	12	0	0	0
515	Steel Protective Coating	SF	240	240	0	0	0
234	Reinforced Concrete Pier Cap	LF	252	252	0	0	0
303	Assembly Joint with Seal	LF	80	40	0	0	40
7000	Damage	LF	40	0	0	0	40
(303)	Top plate missing at bent 6						
(303-7000)	JOINT SEAL @ BENT 6; SLIDER PLATE HAS BEEN REMOVED LEAVING 1/2" TO 1" OPEN JOINT. TROUGH @ BENT 6; TROUGH UNDER EXPANSION JOINT HAS FILLED WITH DIRT AND DEBRIS.						
310	Elastomeric Bearing	EA	36	24	0	12	0
2220	Alignment	EA	12	0	0	12	0
(310)	ELASTOMERIC BEARINGS AT END BENTS 1 AND 6 ARE OUT OF ALIGNMENT AND THE ANCHER BOLTS SEEM TO HAVE BEEN SET IN THE WRONG PLACE DURING TO CONSTRUCTION OF THE END BENTS.						
331	Reinforced Concrete Bridge Railing	LF	604	604	0	0	0



Ss



Deck photo



AI



Elevation

Maintenance Needs

Date Reported: 04/02/2012
Priority: D- Routine
Type of Work: Repair
Status: Assigned
Inspection Direction N to S
Component: 310 - Elastomeric Bearing

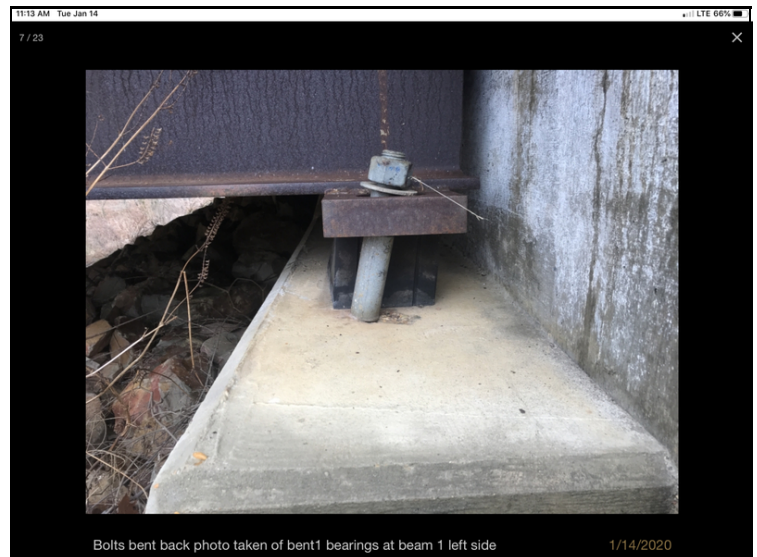
Deficiency Description

ELASTOMERIC BEARINGS AT END BENTS 1 & 6; BEARINGS ARE BOTTOMED OUT AND STARTING TO BEND ANCHOR BOLTS. BEARINGS ARE TALL AND ARE LEANING APPROX. 2". BEARINGS HAVE REMAINED MAXED OUT EVEN AT COLDER TEMP.

Remarks



Bearings



ELASTOMERIC BEARINGS AT END BENTS 1 & 6; BEARINGS ARE BOTTOMED OUT AND STARTING TO BEND ANCHOR BOLTS. BEARINGS ARE TALL AND ARE LEANING APPROX. 2". BEARINGS HAVE REMAINED MAXED OUT EVEN AT COLDER TEMP.. 01/14/2020 11:15 am temperature 56 deg. Photo taken of bent 1 beam 1 or left out side beam.



Bridge #06611(Routine, Underwater type 2)

US 371- 03 -16.17 over OZAN CREEK

Location: 3 MI S JCT SH 195

Team Lead: Charlie Rogers **Inspection Date:** January 05, 2022

Date Reported: 04/02/2012

Priority: D- Routine

Type of Work: Repair

Status: Assigned

Inspection Direction N to S

Component:

Deficiency Description

JOINT SEAL @ BENT 6; SLIDER PLATE HAS BEEN REMOVED LEAVING 1/2" TO 1" OPEN JOINT.

Remarks



Trough at bent 6



Bridge #06611(Routine, Underwater type 2)

US 371- 03 -16.17 over OZAN CREEK

Location: 3 MI S JCT SH 195

Team Lead: Charlie Rogers **Inspection Date:** January 05, 2022

Date Reported: 04/02/2012

Priority: D- Routine

Type of Work: Clean

Status: Assigned

Inspection Direction N to S

Component:

Deficiency Description

TROUGH @ BENT 6; TROUGH UNDER EXPANSION JOINT HAS FILLED WITH DIRT AND DEBRIS.

Remarks



Trough at bent 6..

Date Reported: 04/02/2012
Priority: G - General/ Preventive maintenance
Type of Work: Repair
Status: Assigned
Inspection Direction N to S
Component:

Deficiency Description

ASPHALT APPROACH BENT 6; END APPROACH IS SETTLING AND BREAKING UP.

Remarks

ROUGH PATCH IN PLACE AT APPROACH, PATCH NOW BREAKING UP.



Ruff patch at end bent



Bridge #06611(Routine, Underwater type 2)

US 371- 03 -16.17 over OZAN CREEK

Location: 3 MI S JCT SH 195

Team Lead: Charlie Rogers **Inspection Date:** January 05, 2022

Inspection Comments

01/17/2018...AL, SS, DECK PHOTOS TAKEN. LITTLE OR NO CHANGE IN CONDITION. BRIDGE BUILT ON JOB #030060
DRAWING # 36328...01-14-2020 AL,SS,OTHER PHOTO TAKEN....01/05/2022 AL,SS,DEF. AND SOUNDINGS TAKEN....

Deck Notes

01/17/2018...AL, SS, DECK PHOTOS TAKEN. LITTLE OR NO CHANGE IN CONDITION. BRIDGE BUILT ON JOB #030060
DRAWING # 36328...

Superstructure Notes

ELASTOMERIC BEARING AT BENT 1 &6 HAVE MAX OUT AND STARTING TO BENT ANCHOR BOLTS

Substructure Notes

Columns: CONCRETE BENT 3 &4

Piles: STEEL PILEING WITH CONCRETE ENCASEMENT ,CONCRETE ENCASED WITH CORRUGATED PIPE BENT 2 & 5