



# Welcome County Judges!

Lorie Tudor, P.E.  
Director

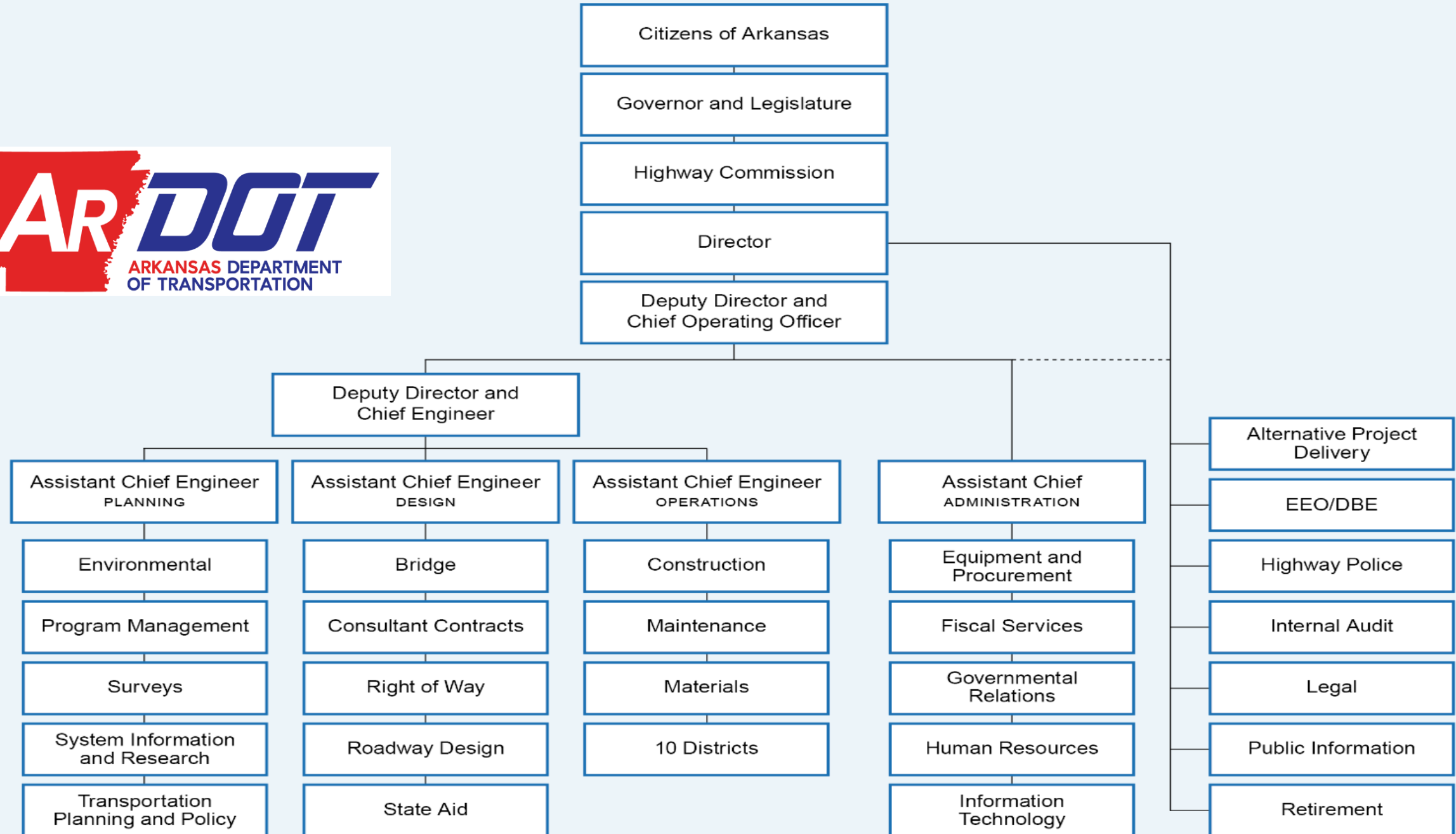
Arkansas Department of Transportation



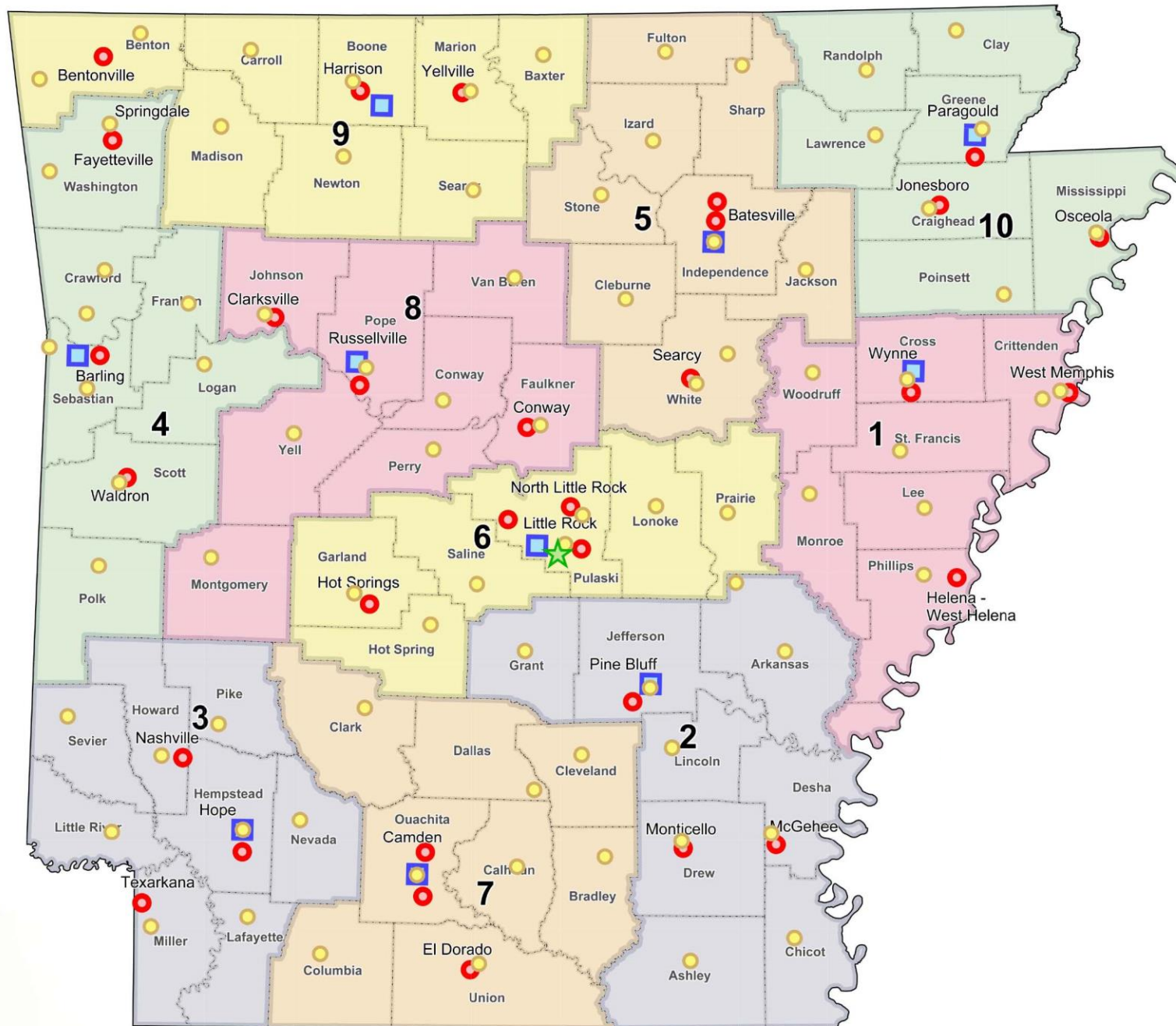


# ARDOT Quick Facts

- 3rd Largest State Agency
- Approximately 3,700 Employees
- Maintain 16,418 miles of Highway and 7,335 Bridges
- Central Offices in Little Rock
- 10 Districts Statewide

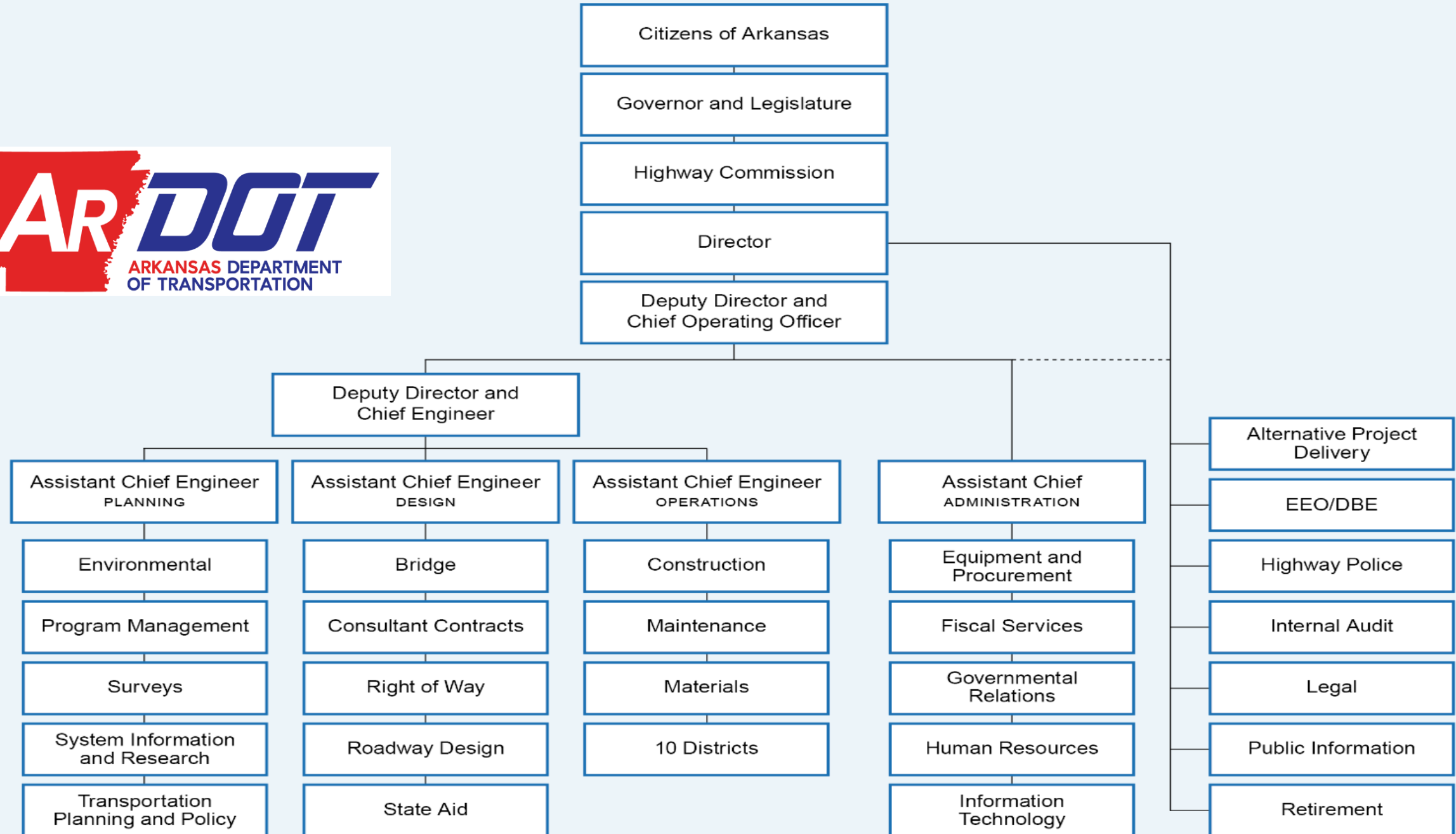






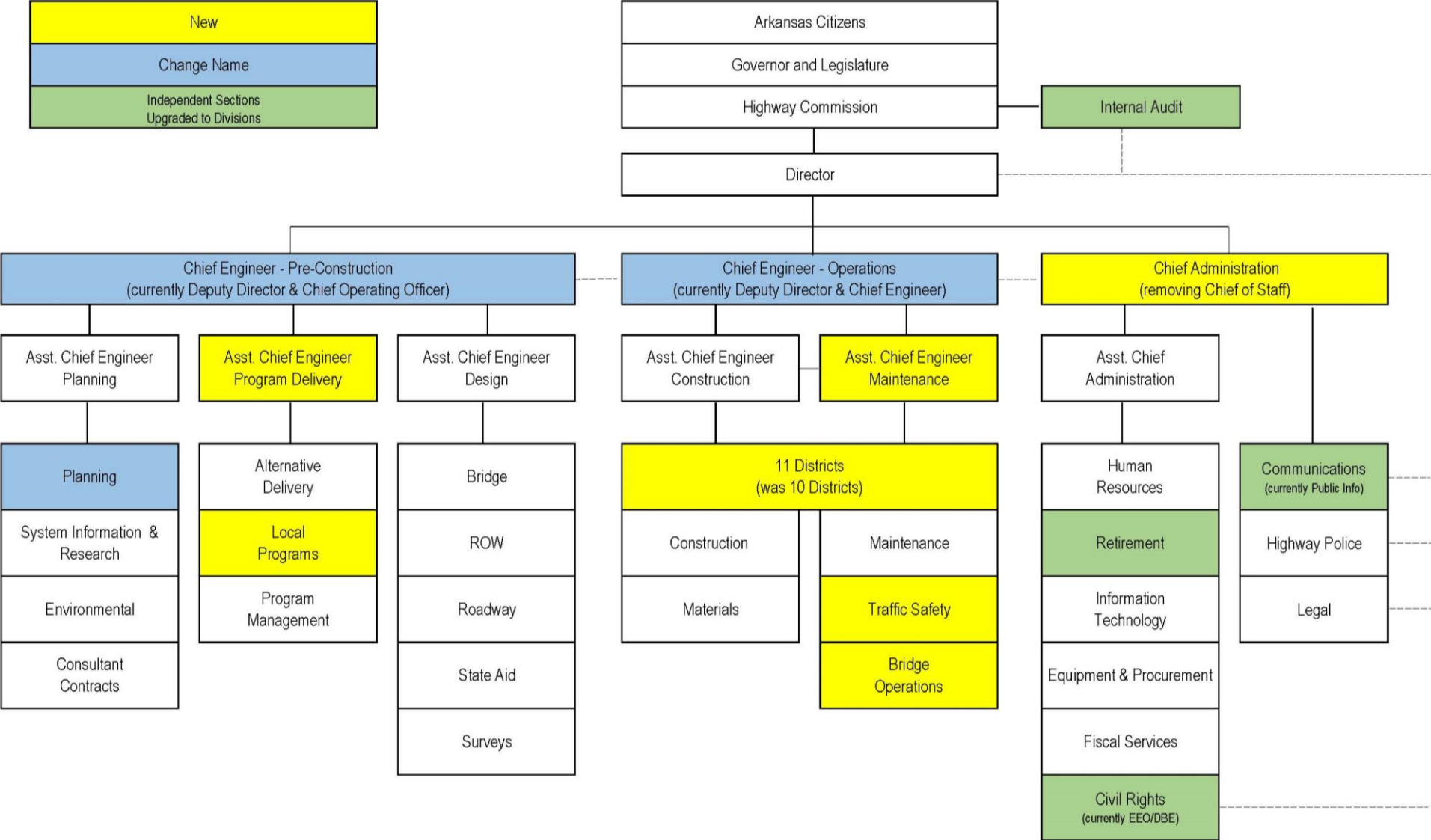
# District Map

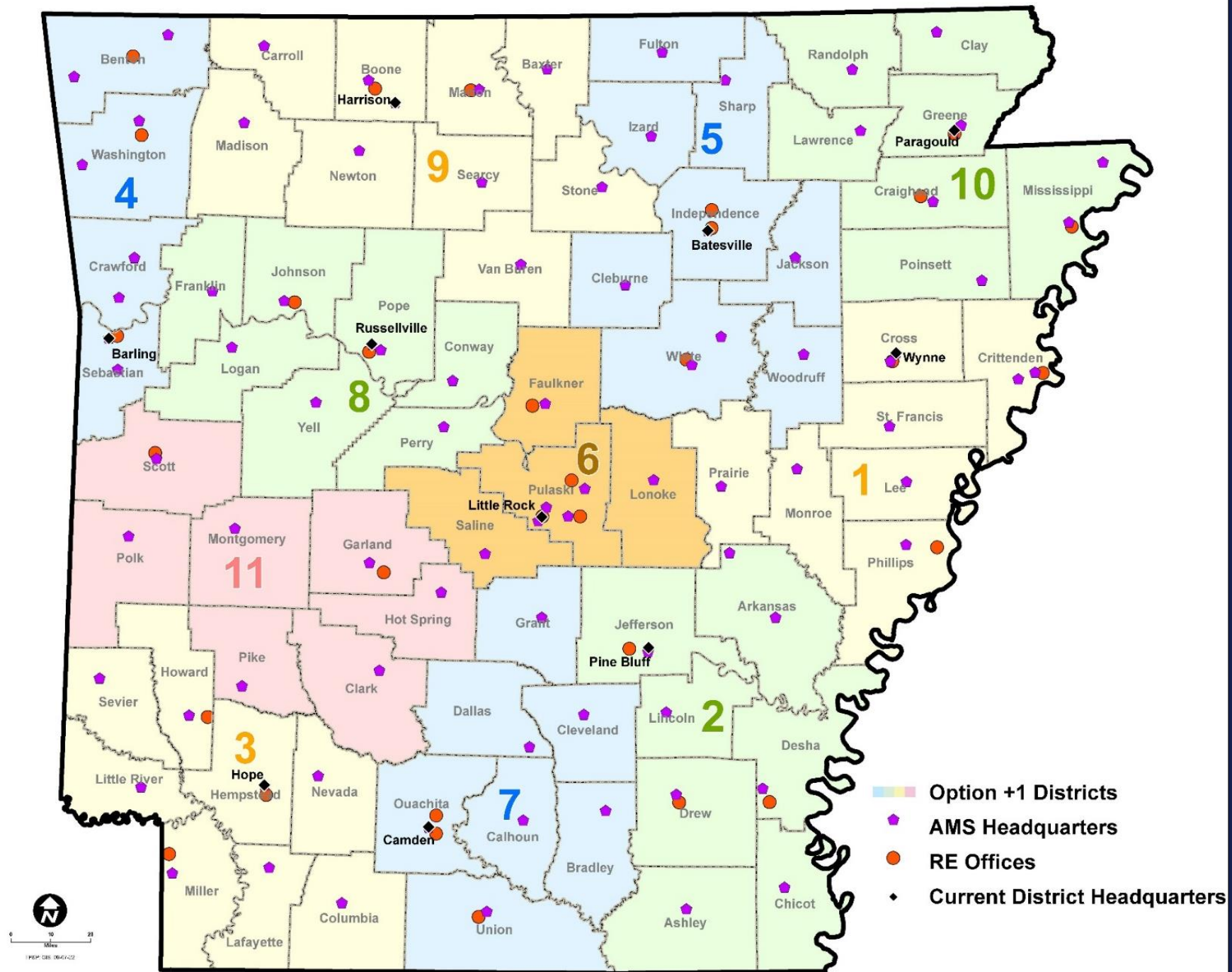
- ★ Central Offices
- District Headquarters
- Resident Engineer Offices
- Area Headquarters/  
Maintenance Facility



# Arkansas Department of Transportation

## Proposed Organizational Chart







# Arkansas State Highway Commission



**Chairman  
Alec Farmer  
Jonesboro**



**Vice-Chairman  
Philip Taldo  
Springdale**



**Keith Gibson  
Fort Smith**



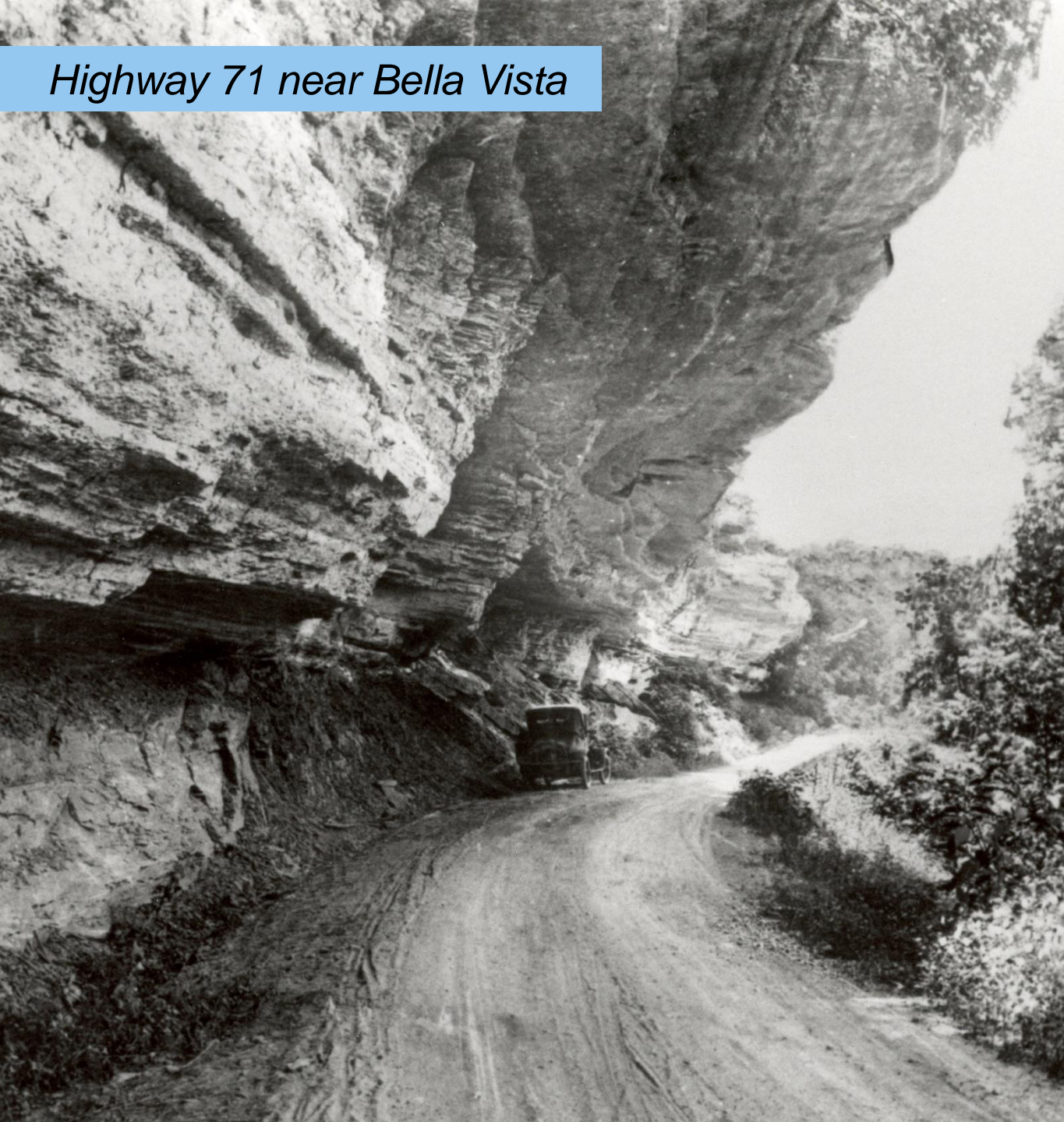
**Marie Holder  
Little Rock**



**David Haak  
Texarkana**



## *Highway 71 near Bella Vista*

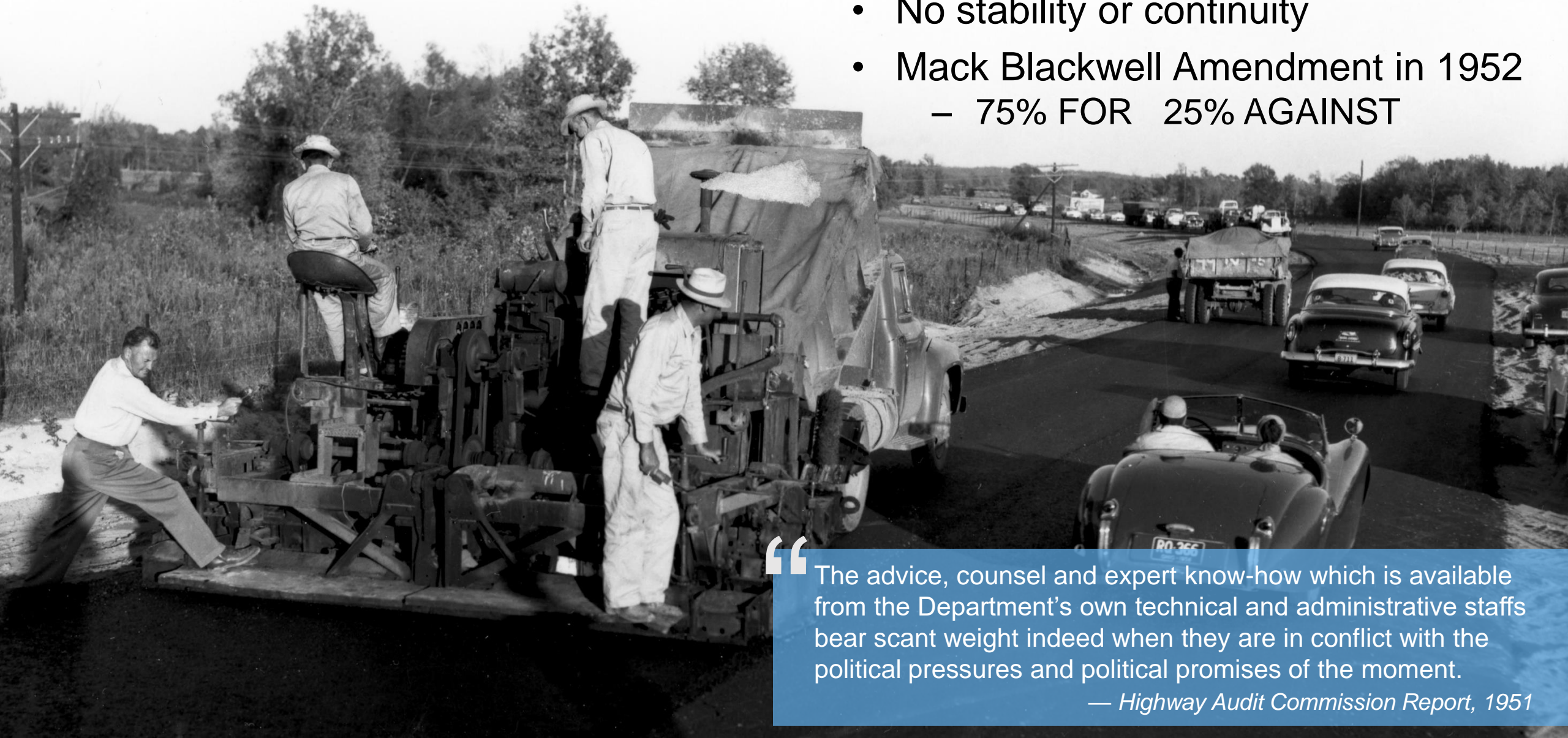


- First Commission created
  - No Highway Department
  - No Highway System
- 3,600 Vehicles
- \$72,000 total budget
- 36,000 miles of public roads



## Widening Hwy 67 near Malvern, 1956

- Nine Legislative Acts restructured Commission since 1913
- No stability or continuity
- Mack Blackwell Amendment in 1952
  - 75% FOR 25% AGAINST



“ The advice, counsel and expert know-how which is available from the Department's own technical and administrative staffs bear scant weight indeed when they are in conflict with the political pressures and political promises of the moment.

— Highway Audit Commission Report, 1951





- *1<sup>st</sup> State to Complete its Interstate System (1975)*
- *1985 – Rural Road Program – out of the mud*
- *1991 – Highway Improvement Program*
- *1999 – Interstate Rehabilitation Program – First Highway Bond Issue in 50 years*
- *2011 – 2<sup>nd</sup> Interstate Rehabilitation Program*
- *2012 – Connecting Arkansas Program*
- *2020 – Renew Arkansas Highways Program*





# Funding

**01**

**½ cent Sales Tax  
Funds**

**02**

**Regular State  
Funds**

**03**

**Federal  
Funds**



[illegible]

- 2012
- Temporary ½ cent Sales Tax
- 31 Promises Made
- 31 Promises Kept
- \$2 Billion
- 200 Miles
- Ahead of Schedule



## State Highways

**Act 416** **\$ 95 Million**

**Issue 1** **\$205 Million**

**Total to ARDOT** **\$300 Million**



July 2023

- System Preservation
  - ✓ 7,000 Miles
  - ✓ 1,100 Bridges
  - ✓ \$5.1 Billion
- Capital and Capacity
  - ✓ \$3.6 Billion



FEDERAL FISCAL YEARS  
2023-2026

STATEWIDE  
TRANSPORTATION  
IMPROVEMENT  
PROGRAM

**STIP**

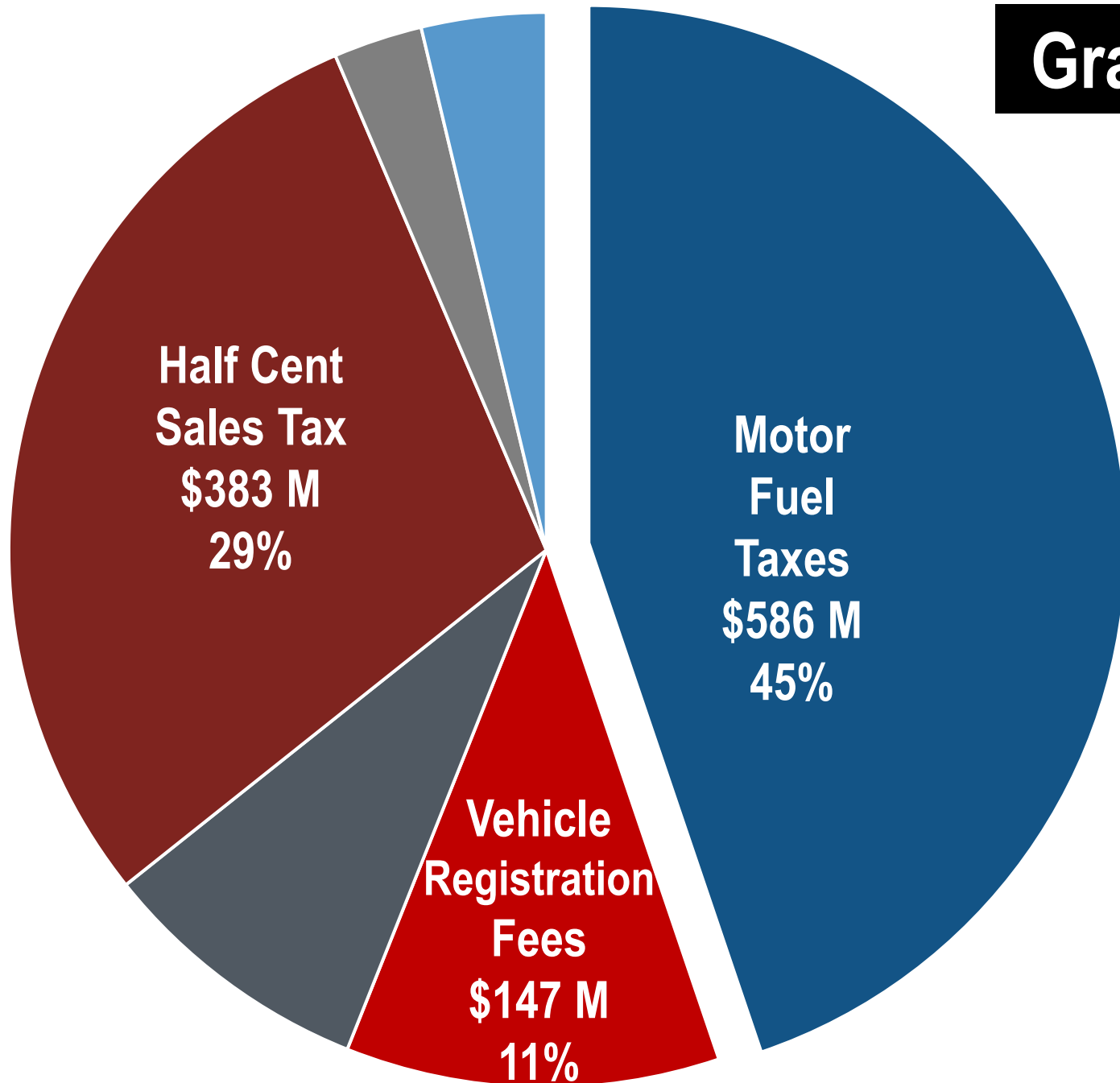
**DRAFT**

# Statewide Transportation Improvement Program

- Federal Requirement
- Financial Constraint
- Development Supports:
  - ✓ Public Transparency
  - ✓ Consultation with Transportation Planning Partners
  - ✓ Sound Financial Planning

# Regular State Transportation Funds

## State Fiscal Year 2024



**Grand Total = \$1.3 Billion**

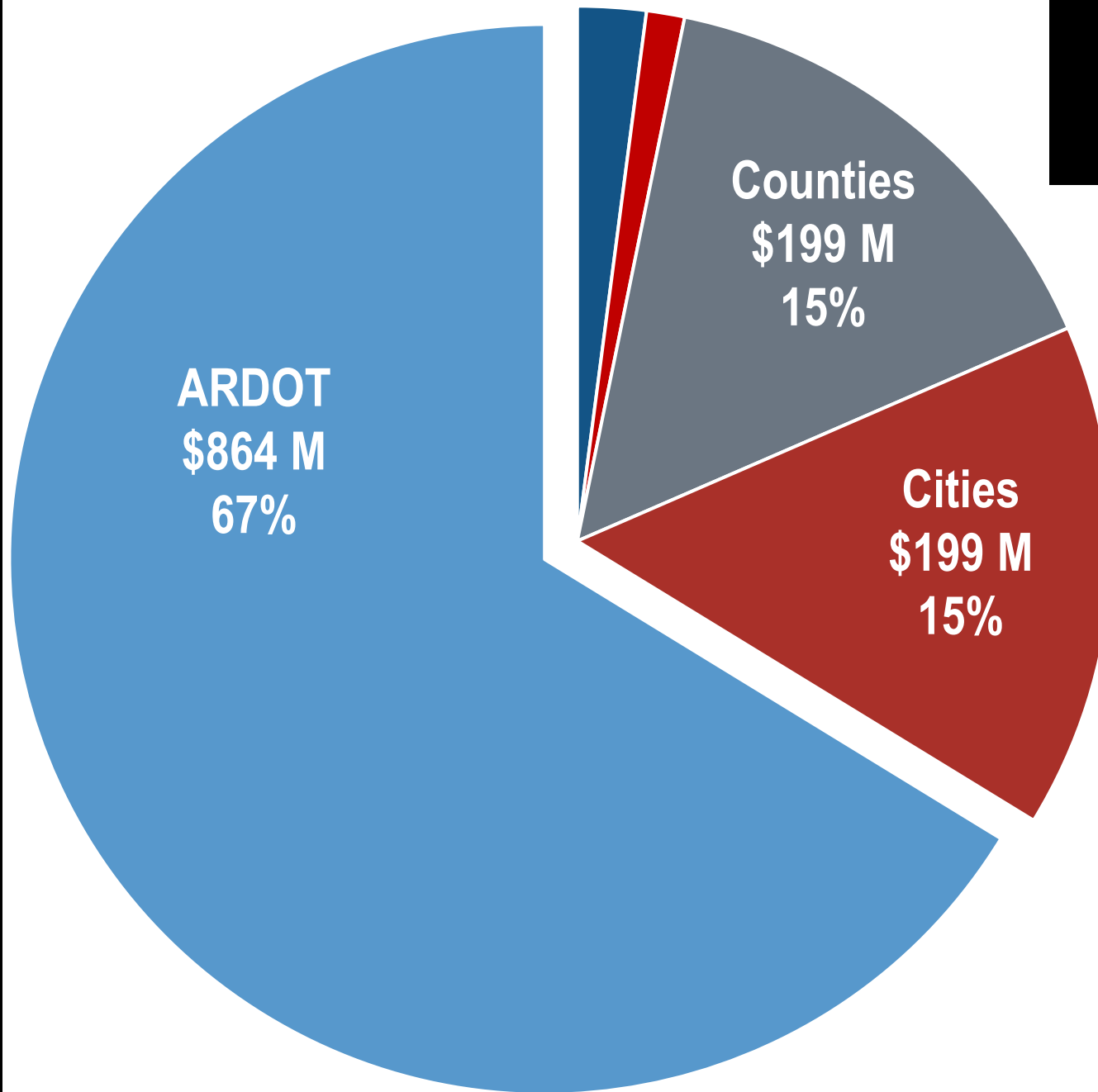
**Natural Gas**  
\$108 M - 8%

**Casino Revenue**  
\$35 M - 3%

**Other**  
\$49 M - 4%

# Regular State Transportation Funds

## State Fiscal Year 2024



**Grand Total = \$1.3 Billion**  
**ARDOT = \$864 Million**

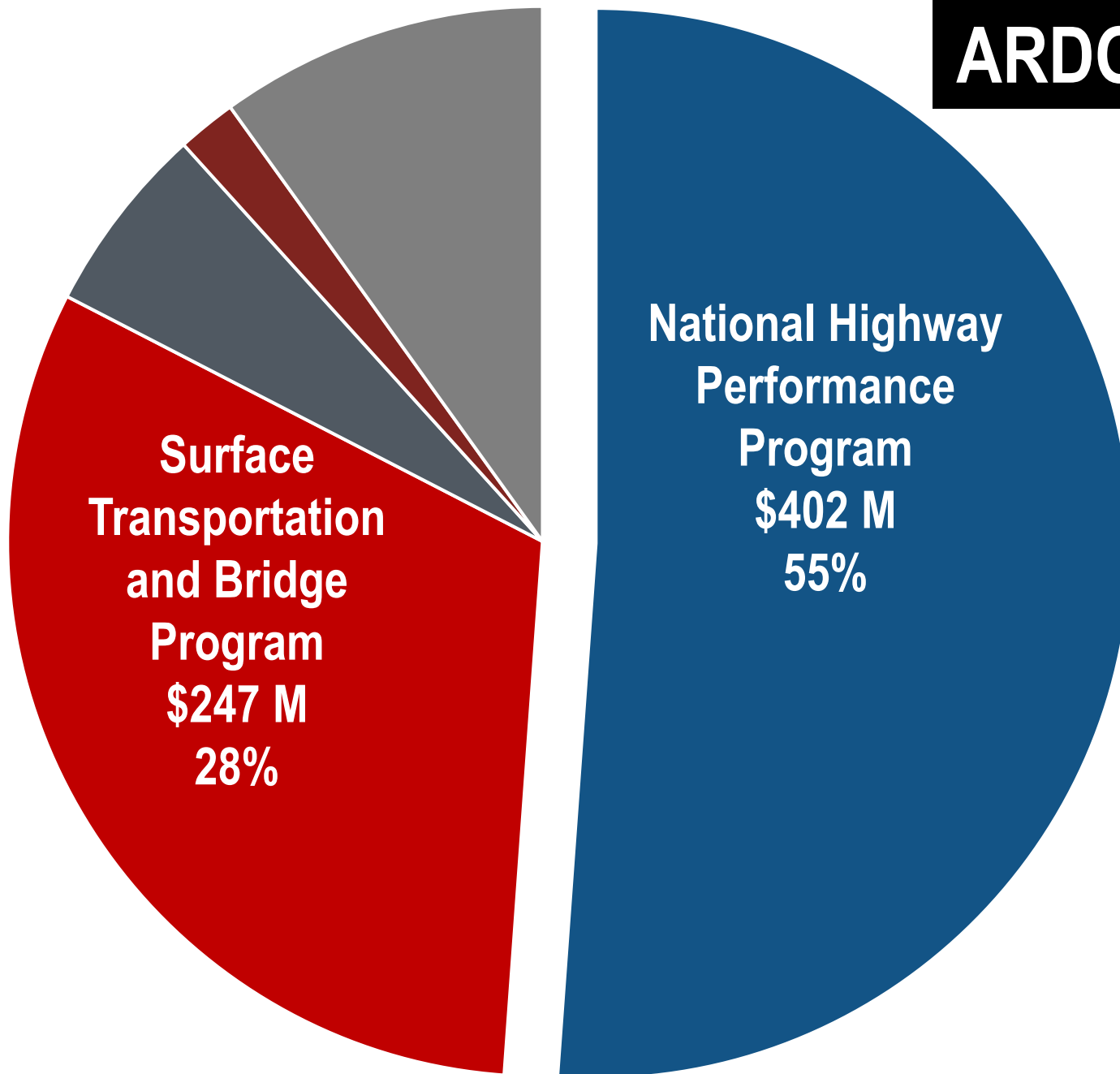
**Constitutional and Fiscal  
Agencies**  
\$27 M - 2%

**Other**  
\$15 M - 1%



# Federal Highway Funds

## Federal Fiscal Year 2024



**ARDOT Total = \$786 Million**

**Highway Safety  
Improvement Program**  
\$45 M - 6%

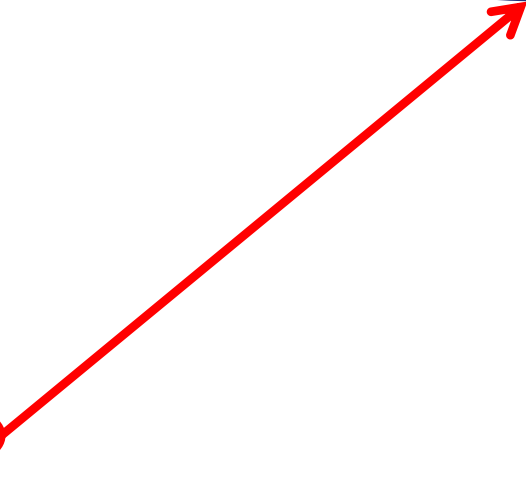
**Congestion Mitigation and  
Air Quality**  
\$14 M - 2%

**Other**  
\$78 M - 9%

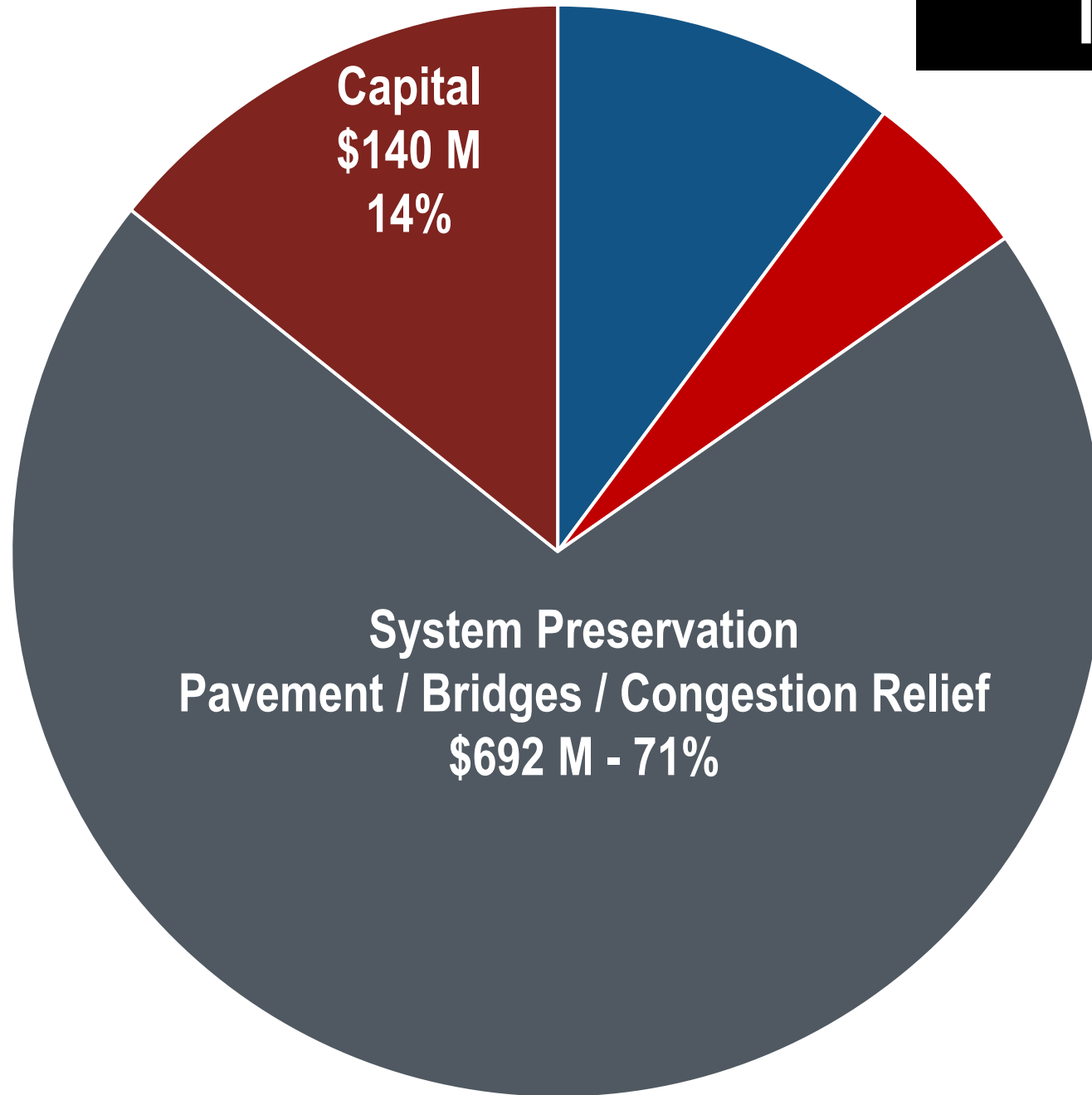
# Estimated Average Annual Construction Funds Fiscal Year 2024

<b>Federal Funds</b> (Est. Average Annual Revenue from IIJA) .....	<b>\$ 786 million</b>
<b>State Highway Funds</b> (Est. Annual Revenue 2024).....	<b>\$ 864 million</b>
<hr/>	
<b>Total Federal and State Highway Funds</b> .....	<b>\$ 1,650 million</b>
<b>Less Federal Funds for:</b>	
<b>Fixed Budgeted Expenditures</b> (Maintenance, Administration and Operations) .....	\$37.4 million (1)
<b>Non-ARDOT Projects</b> (Transportation Alternatives, Counties, Cities, Urban Attributable, Metro Planning, Electric Vehicle) .....	\$75.3 million (2)
<b>Non-Construction Programs</b> (Statewide Planning & Research) .....	\$13.4 million
<b>Right-of-Way, Utilities</b> .....	\$50.0 million (3)
<b>Obligation Limitation</b> .....	\$50.0 million (4)
<b>Total Reduction - Federal Funds (\$ 226) million</b>	
<b>Less State Funds for:</b>	
<b>Fixed Budgeted Expenditures</b> (Maintenance, Administration and Operations) .....	\$374.2 million
<b>State Match for Non-Construction Programs</b> (State Planning & Research) .....	\$1.0 million
<b>Total Reduction - State Funds (\$ 375) million</b>	
<b>Less Federal and State Funds for IRP Commitment:</b>	
<b>National Highway Performance Program Funds</b> .....	\$50.0 million
<b>4¢ Diesel Fuel Tax</b> .....	\$17.0 million
<b>Total Reduction - Federal and State Funds for IRP Commitment (\$ 67) million</b>	
<hr/>	
<b>Total Federal and State Funds Available for Highway Construction</b> .....	<b>\$ 982 million</b>

**\$ 982,000,000**



**Construction Funding Distribution  
Fiscal Year 2024**



**Total = \$982 Million**

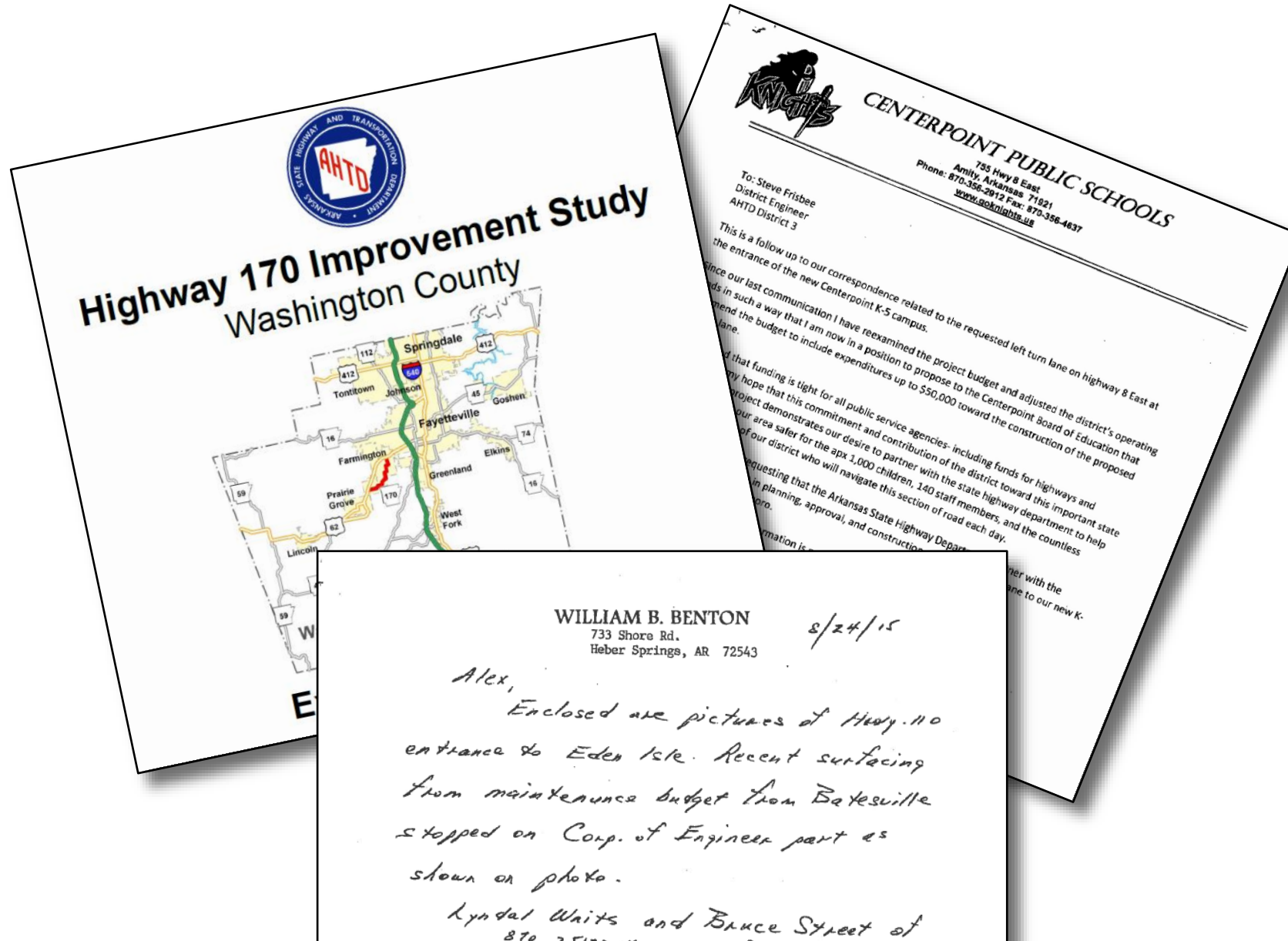
**Interstate**  
**\$100 M - 10%**

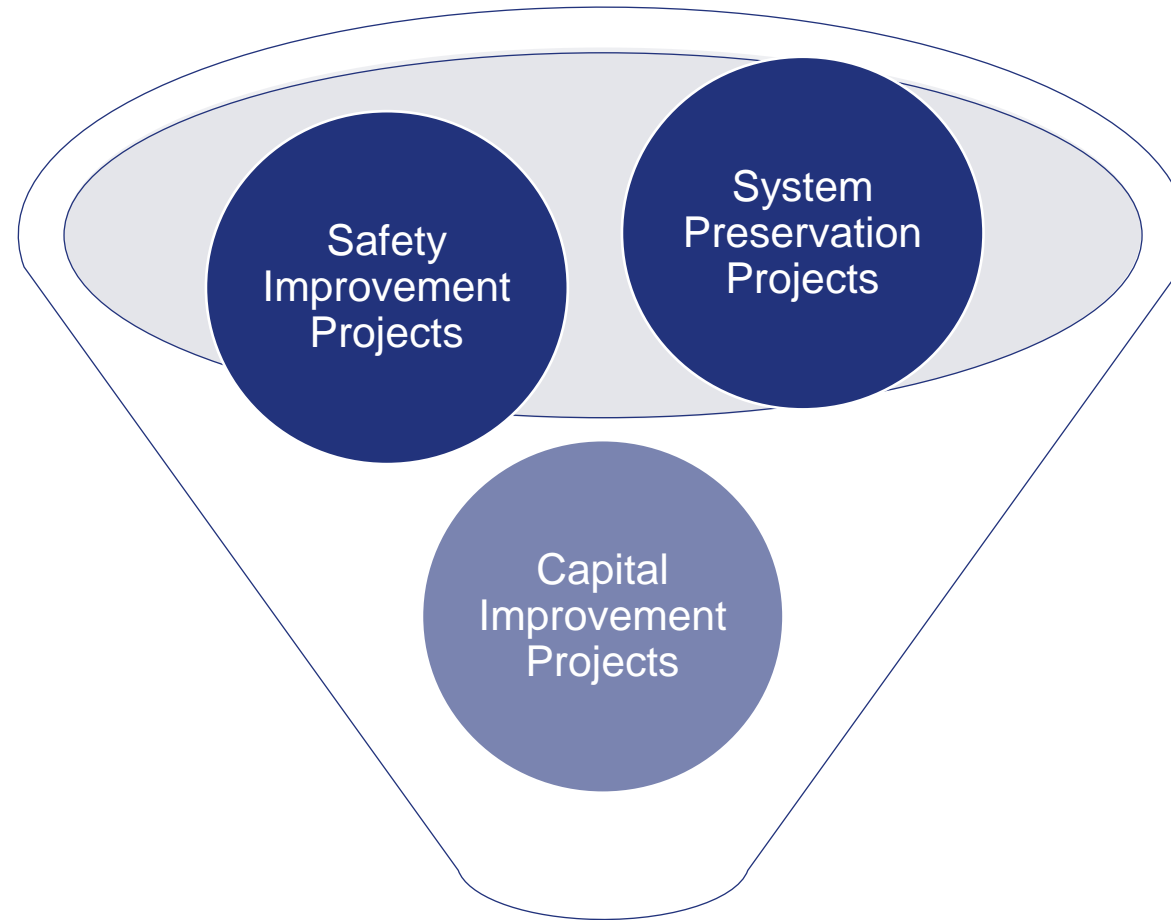
**Safety**  
**\$50 M – 5%**



# Universe of Projects

- Letters
- E-mails
- Studies
  - Safety
  - Planning or Corridor
- Pavement needs
- Bridge needs



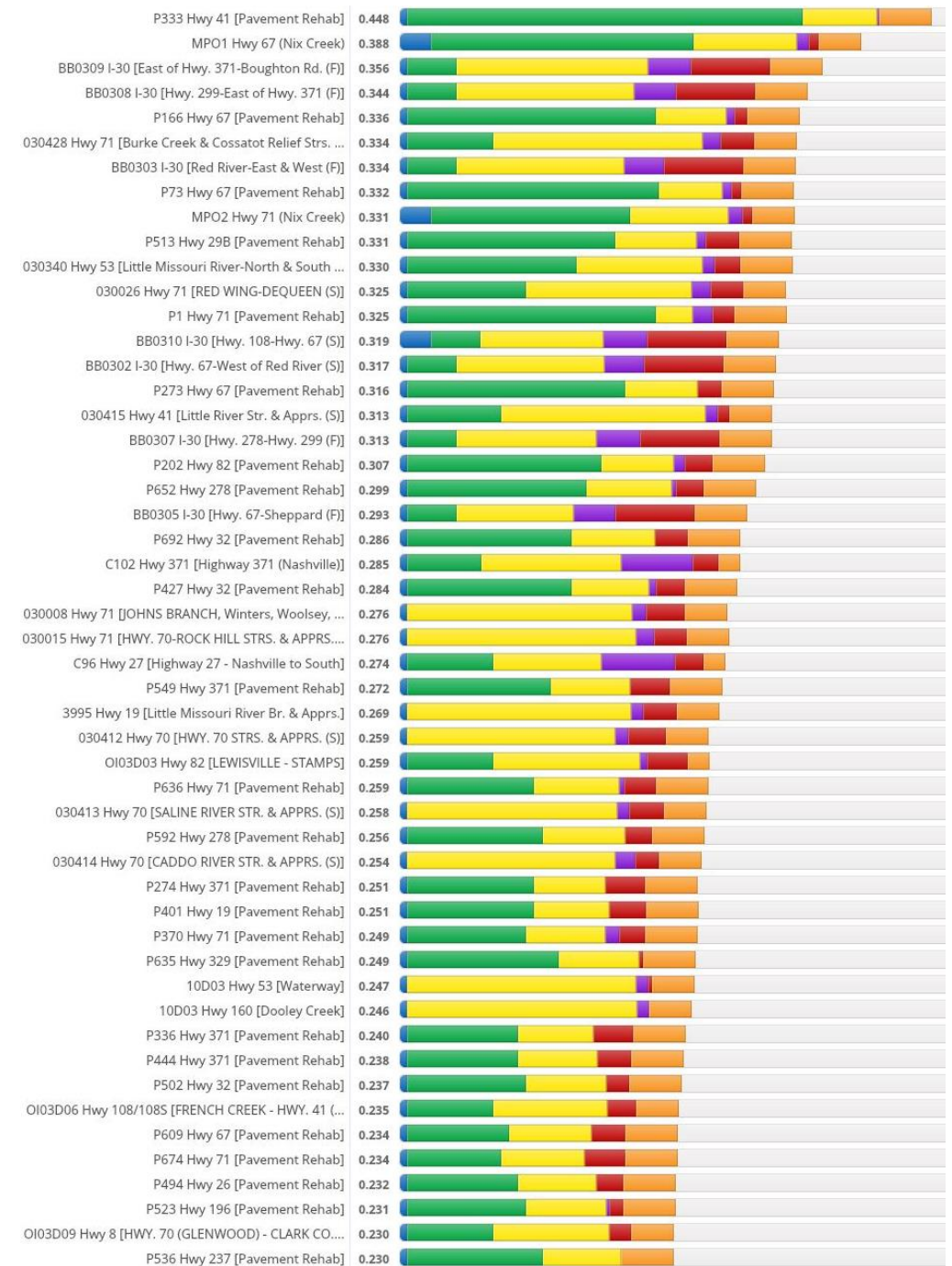


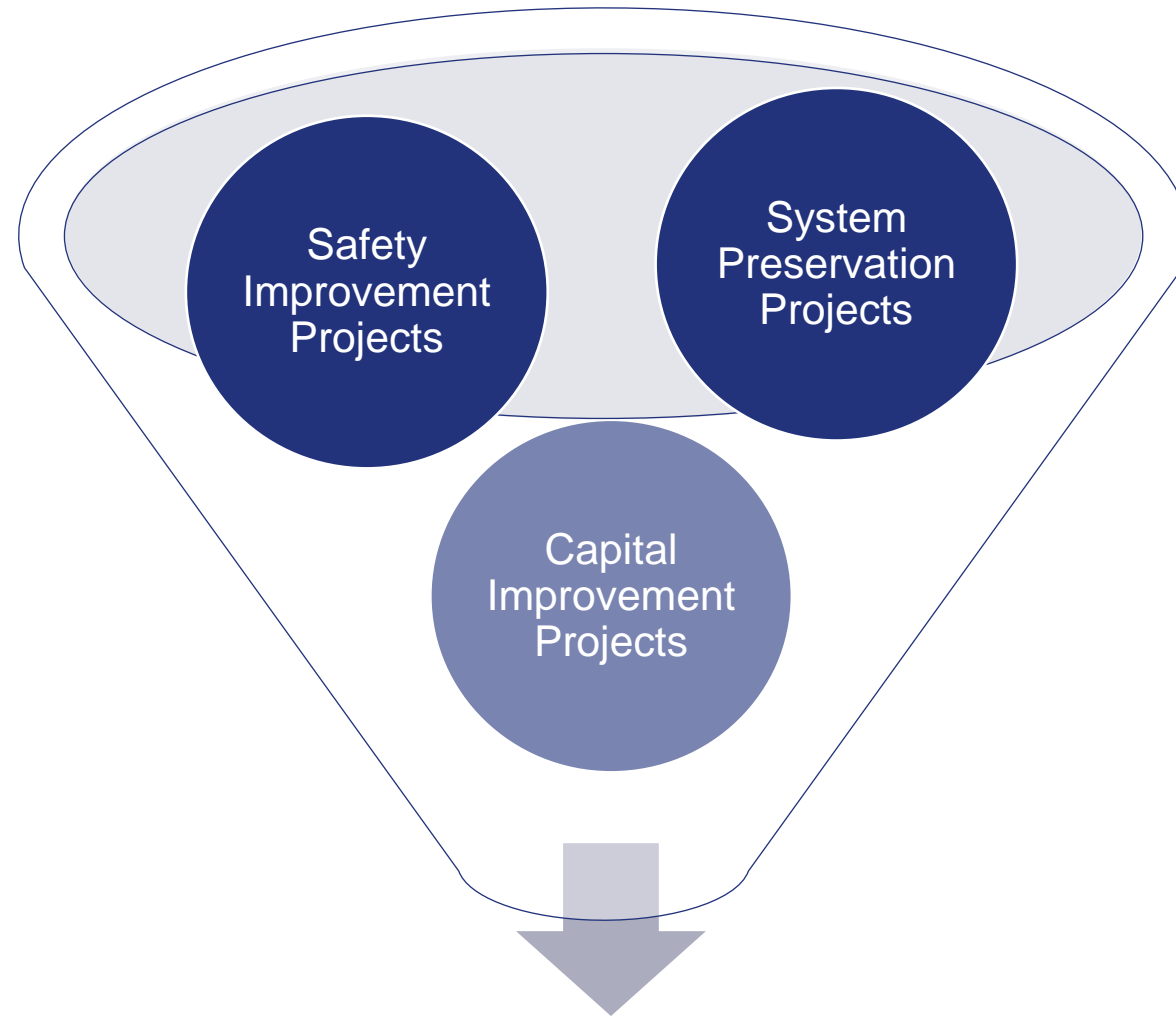
# Universe of Projects



# Project Prioritization

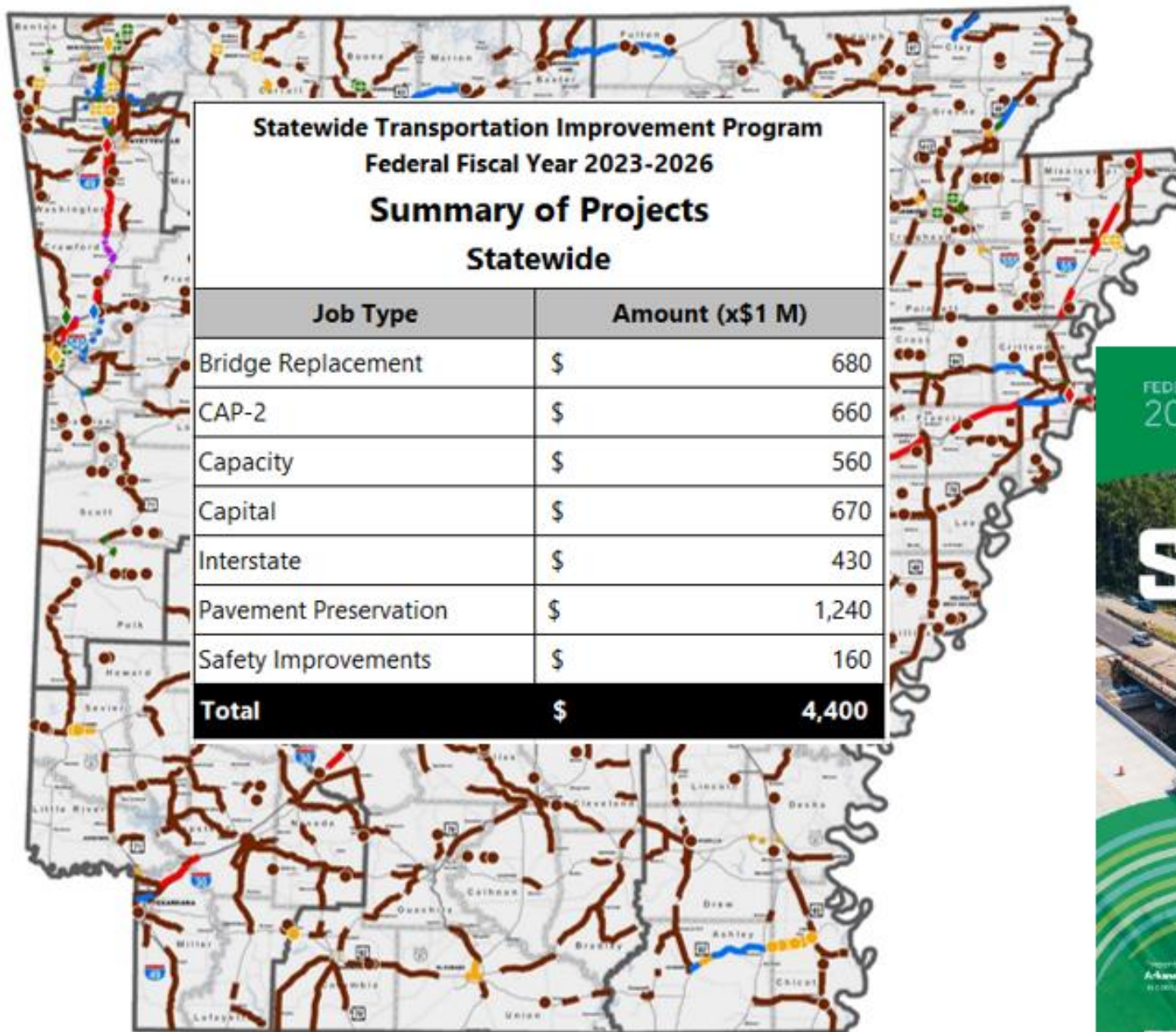
- Decision Lens software package
  - Data-Driven Decision Process
  - Increased Confidence
  - Transparent Evaluation
  - Ranks Projects Based on Criteria
- Ranked nearly 2,000 projects for current STIP



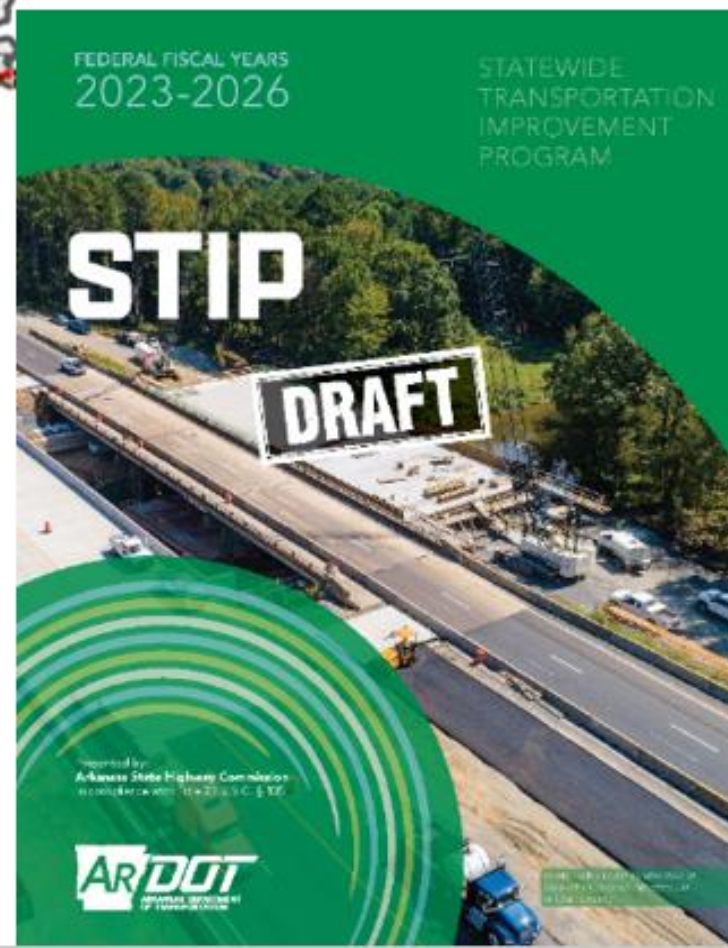


**Prioritized within the Funding Available**





**814 Projects**  
**4,100 Miles**  
**271 Bridges**  
**\$4.4 Billion**



# ARDOT + County Judges

- Partnering Program
- > 85,000 lb. Log Trucks
- State Aid County Road Program
- Bridge Inspection Program
- Surplus Milling Program
- Salvage Bridge Material Program
- Local Technical Assistance Program







# Welcome County Judges!

Lorie Tudor, P.E.

Director

Arkansas Department of Transportation