



Arkansas State Highway Commission Meeting

October 25, 2023

01

Meeting Minutes

August 2, 2023

02

Consideration of Minute Orders

03

Updates

State Highway Financial Report

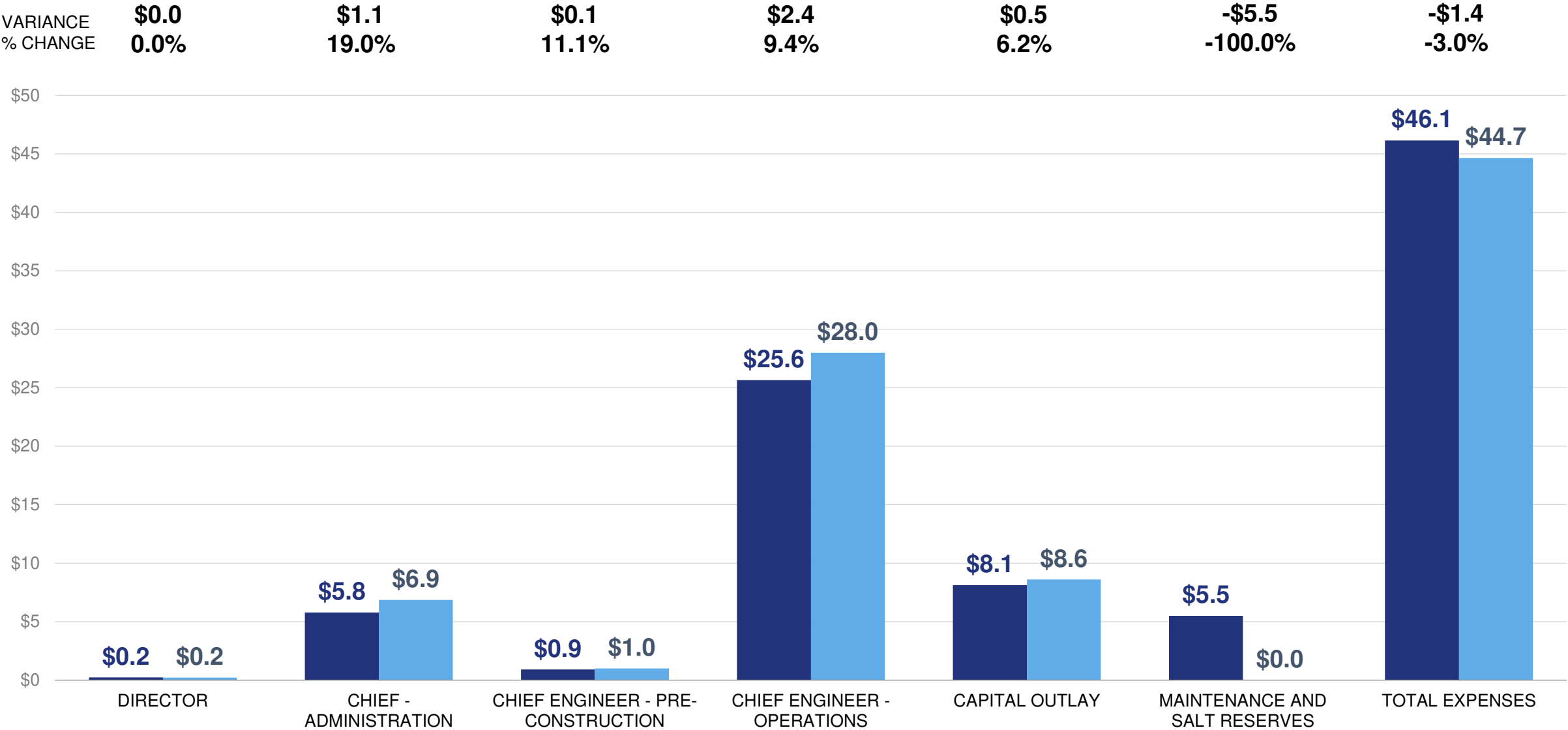
Patrick Patton, CPA

Chief Fiscal Officer

SFY 2024 BUDGETED VS. ACTUAL EXPENSES – By Budget Category

September

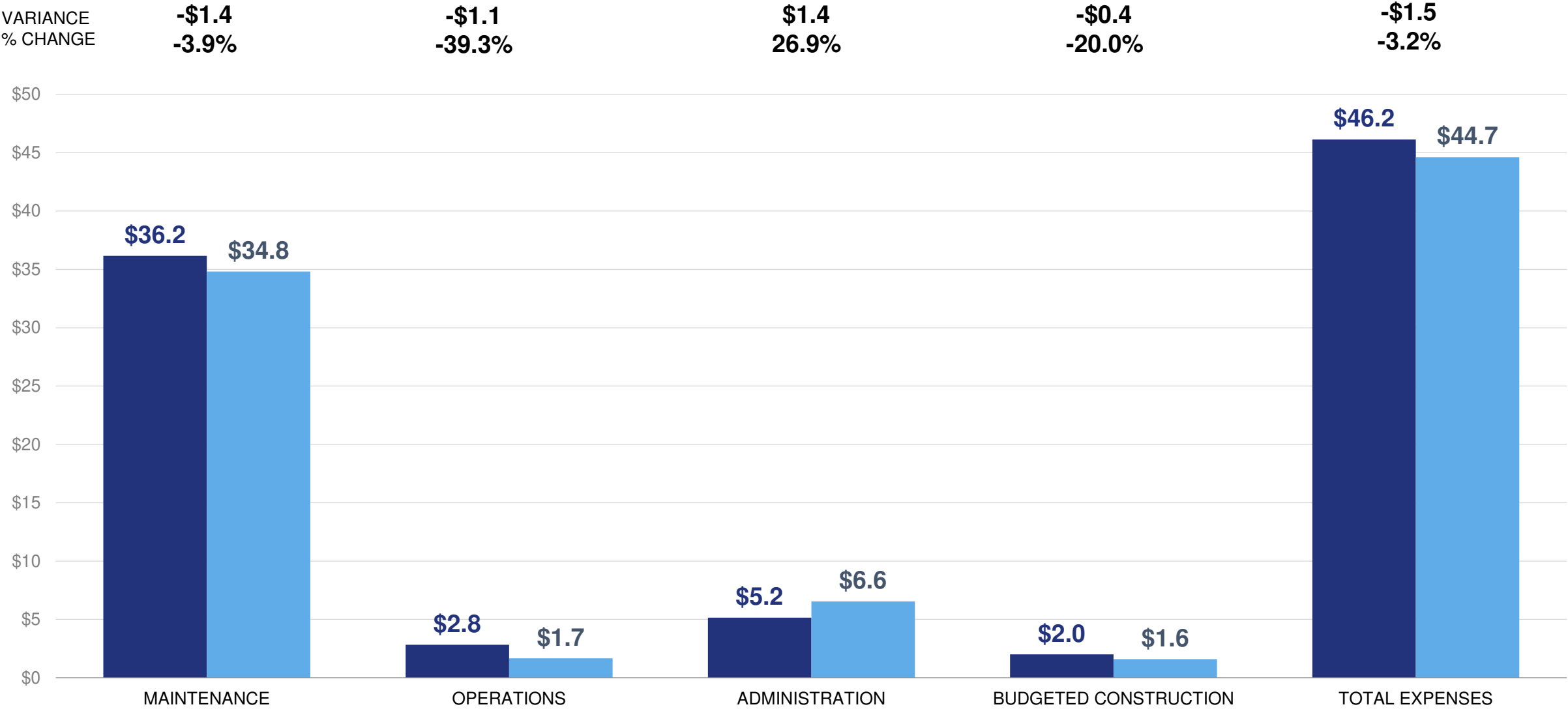
■ BUDGETED ■ ACTUAL
(MILLIONS)



SFY 2024 BUDGETED VS. ACTUAL EXPENSES – By Operational Category

September

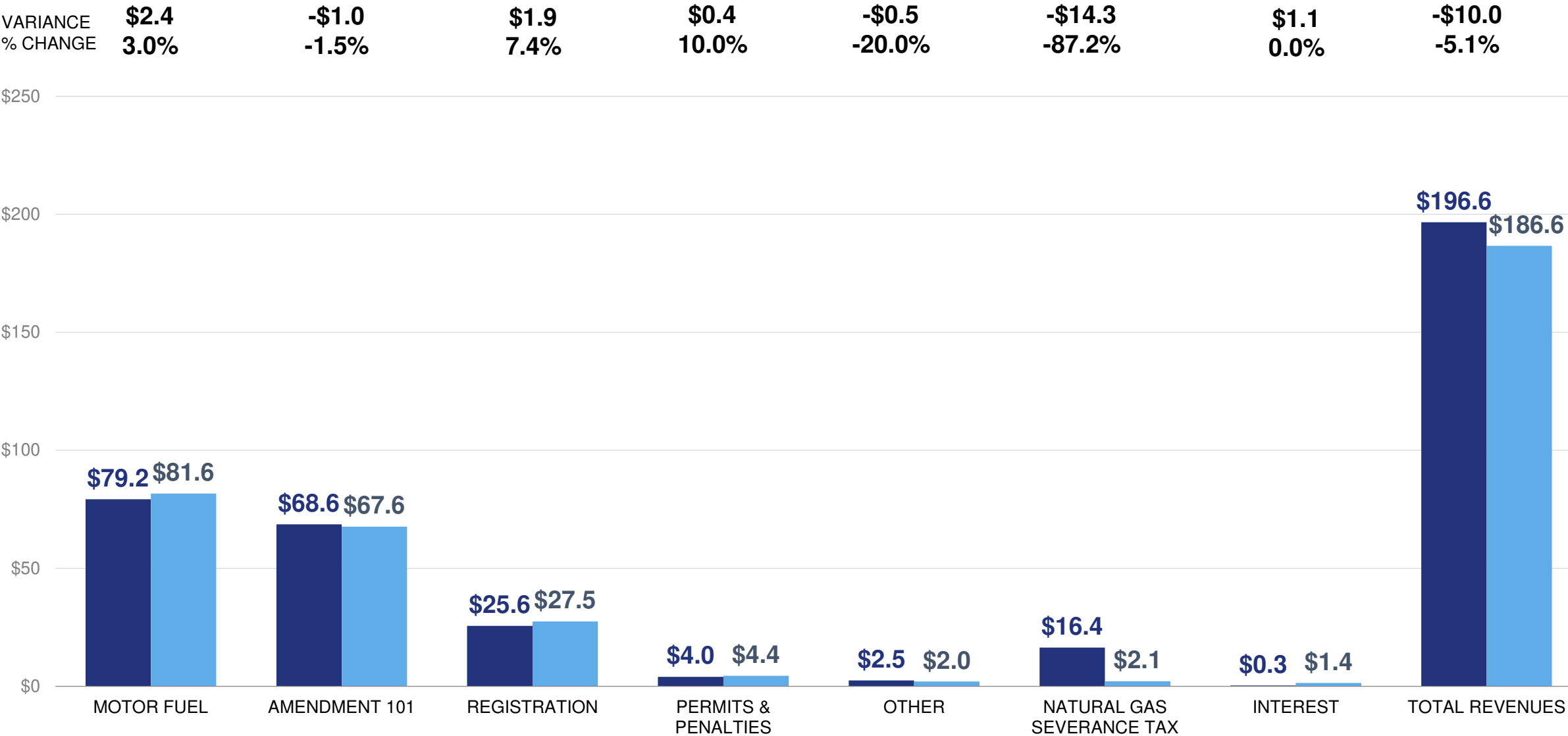
■ BUDGETED ■ ACTUAL
(MILLIONS)



SFY 2023 vs. SFY 2024 ACTUAL REVENUE

September

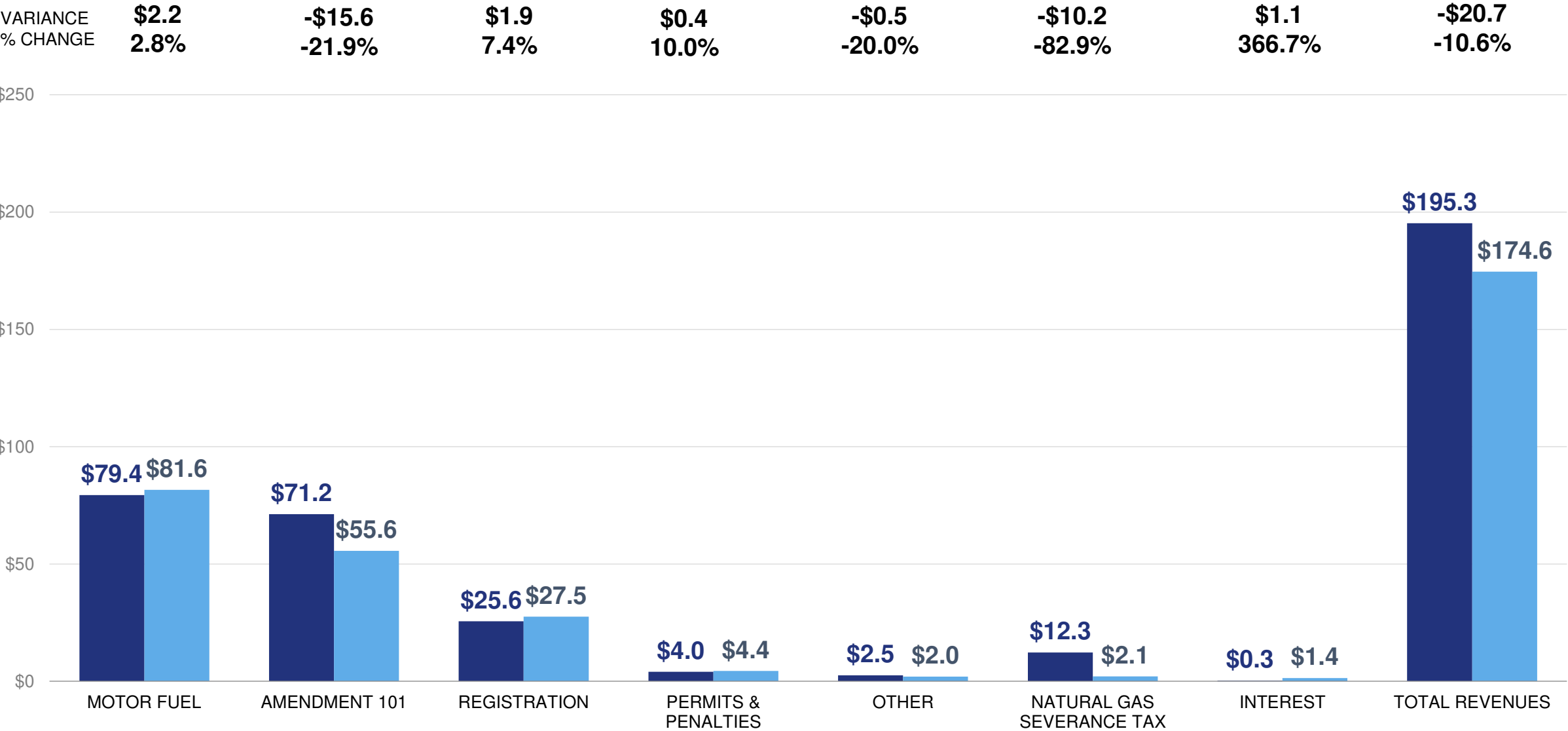
FY 2023 FY 2024
(MILLIONS)



SFY 2024 BUDGETED VS. ACTUAL REVENUE

September

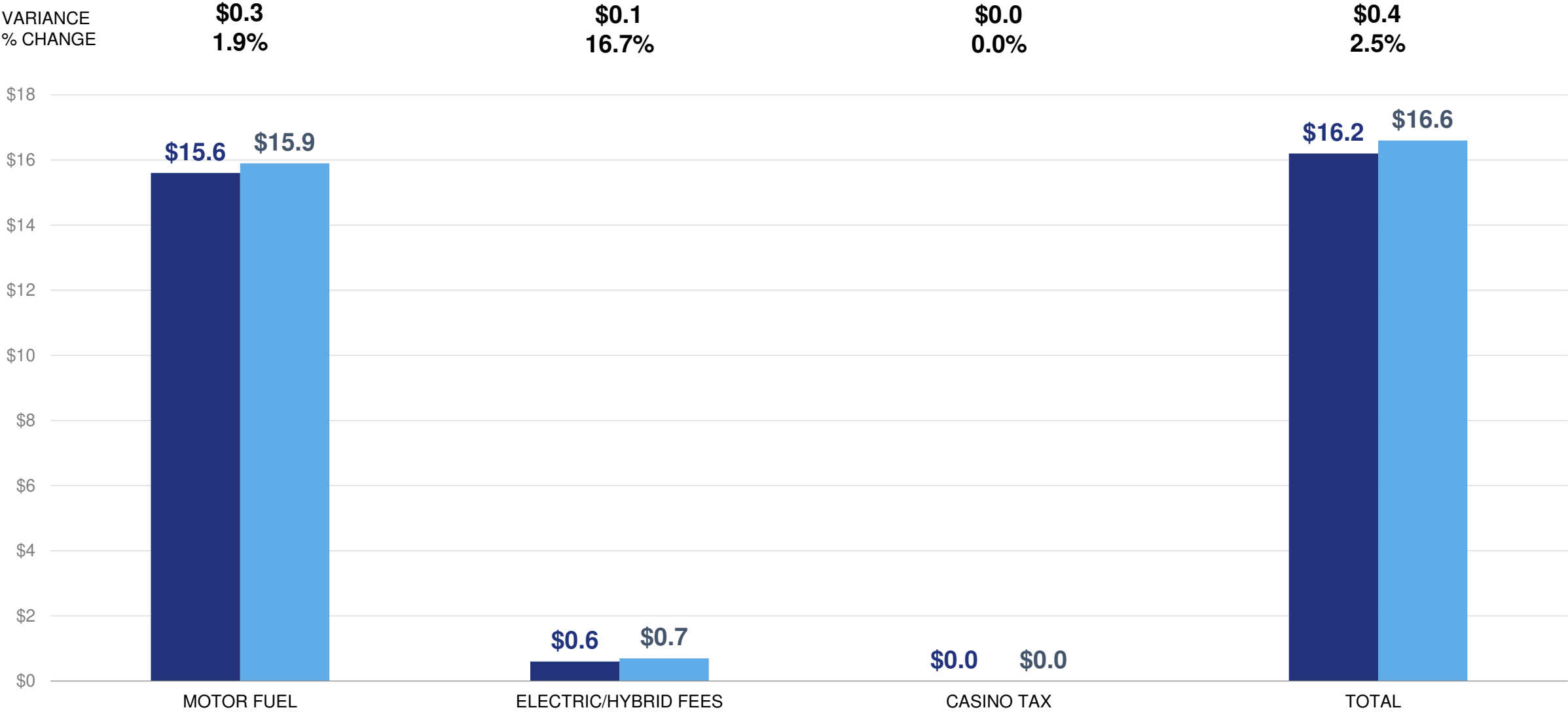
■ BUDGETED ■ ACTUAL
(MILLIONS)



SFY 2023 vs. SFY 2024 ACT 416 ACTUAL REVENUE

September

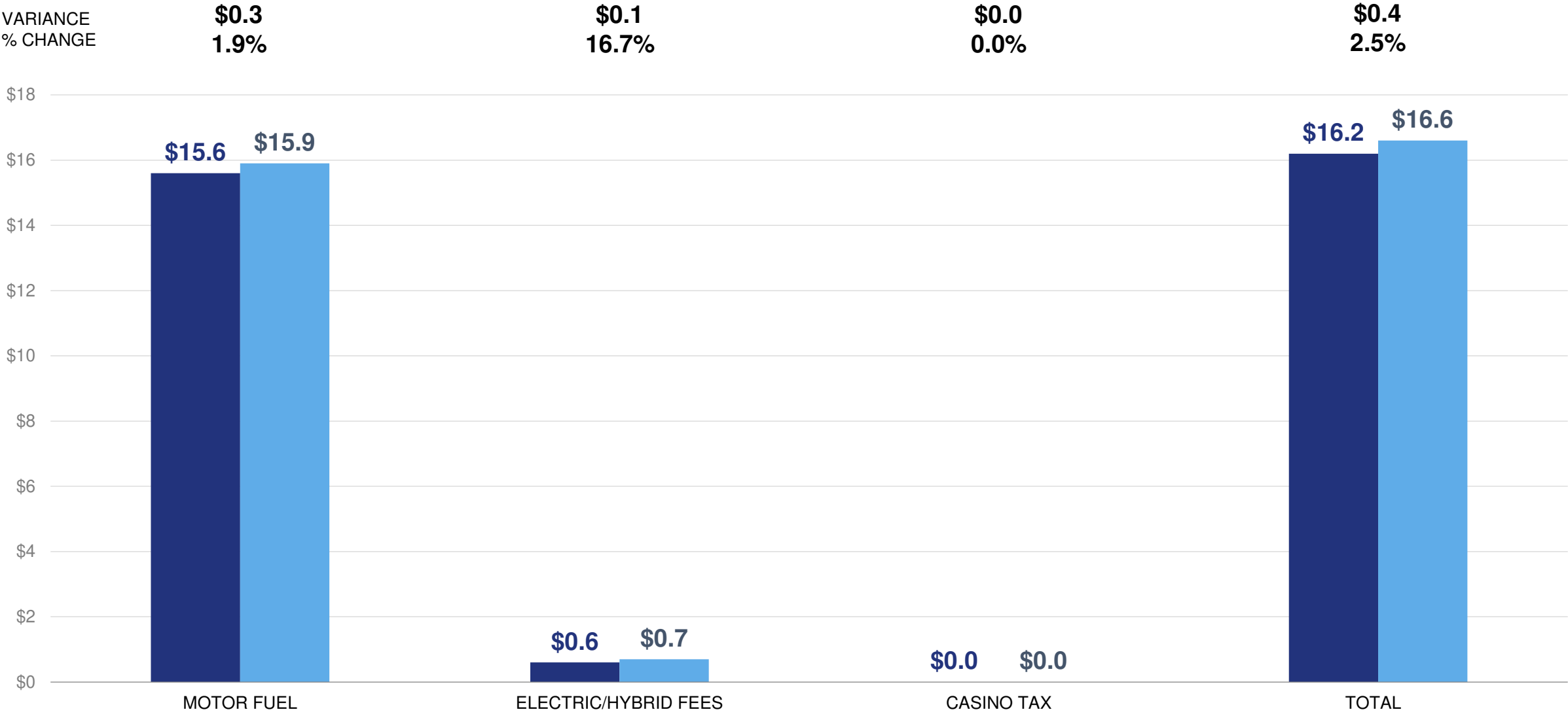
FY 2023 FY 2024
(MILLIONS)



SFY 2024 BUDGETED vs. ACT 416 ACTUAL REVENUE

September

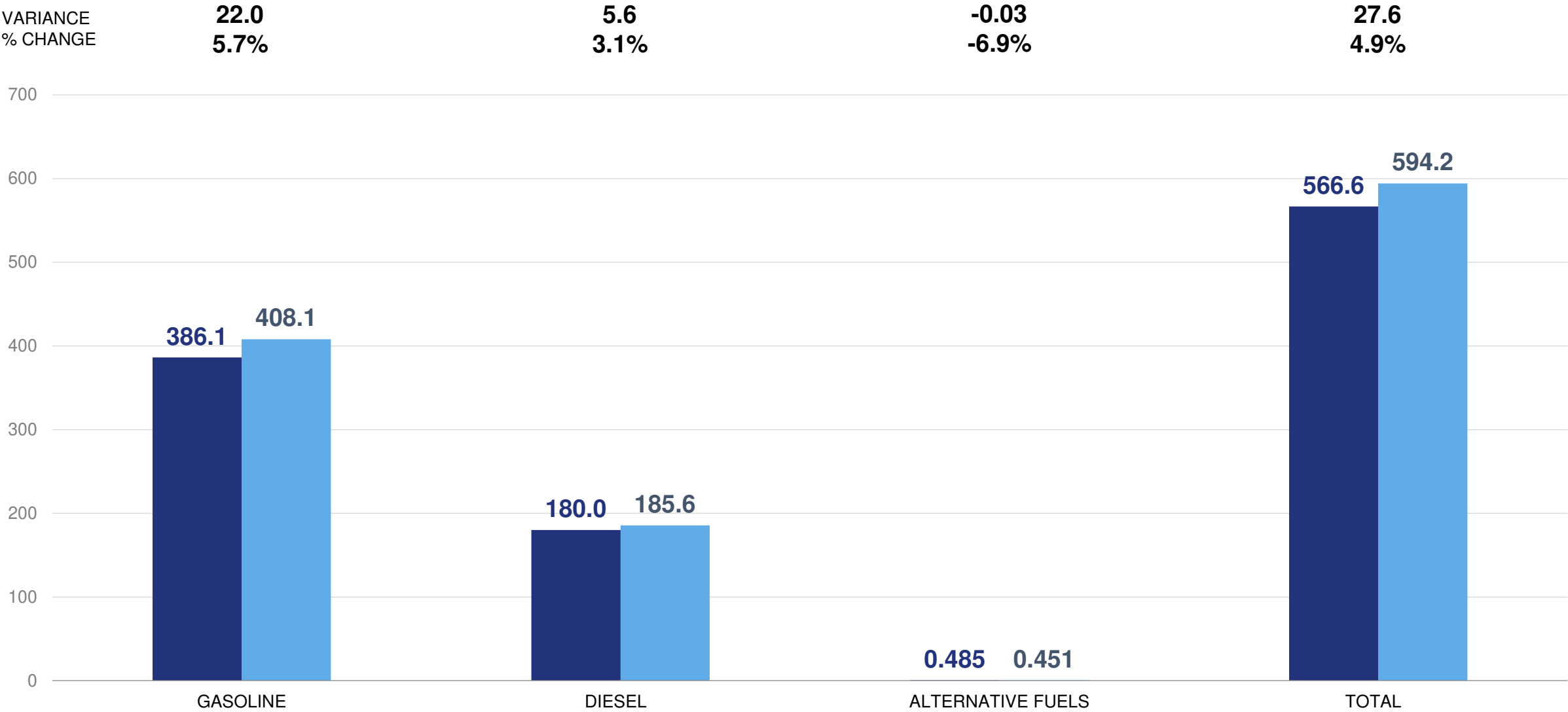
■ BUDGET ■ ACTUAL
(MILLIONS)



SFY 2023 vs. SFY 2024 FUEL CONSUMPTION

September

■ FY 2023 ■ FY 2024
(MILLION GALLONS)





Arkansas Fuel Consumption

ROLLING 12-MONTH COMPARISON

	Previous 12 Months (Gallons)	Current 12 Months (Gallons)	Variance
Gasoline	1,501,416,327	1,537,456,977	2.40%
Diesel	718,293,844	737,591,359	2.69%
Alternative	1,875,491	1,632,891	-12.94%
Total	2,221,585,662	2,276,684,227	2.48%

Federal and State Legislative Update

Kevin Thornton, P.E.

Chief – Administration

2024 Federal Appropriations

We are now in Federal Fiscal Year 2024

Congress and the President agreed on a Continuing Resolution

Continuing Resolution provides funding until November 17

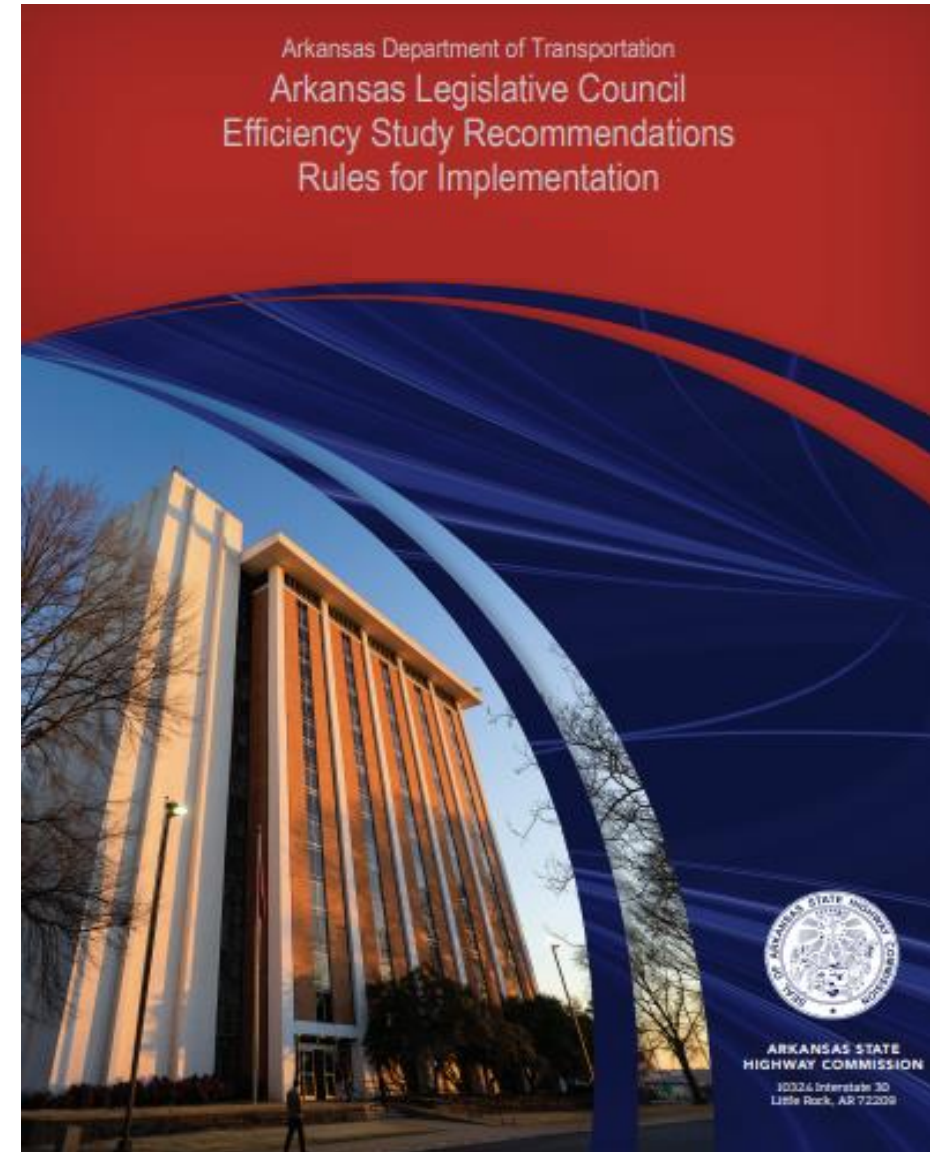


Efficiency Review Implementation

Crystal Woods

Assistant Chief – Administration

Arkansas Legislative Council Efficiency Study

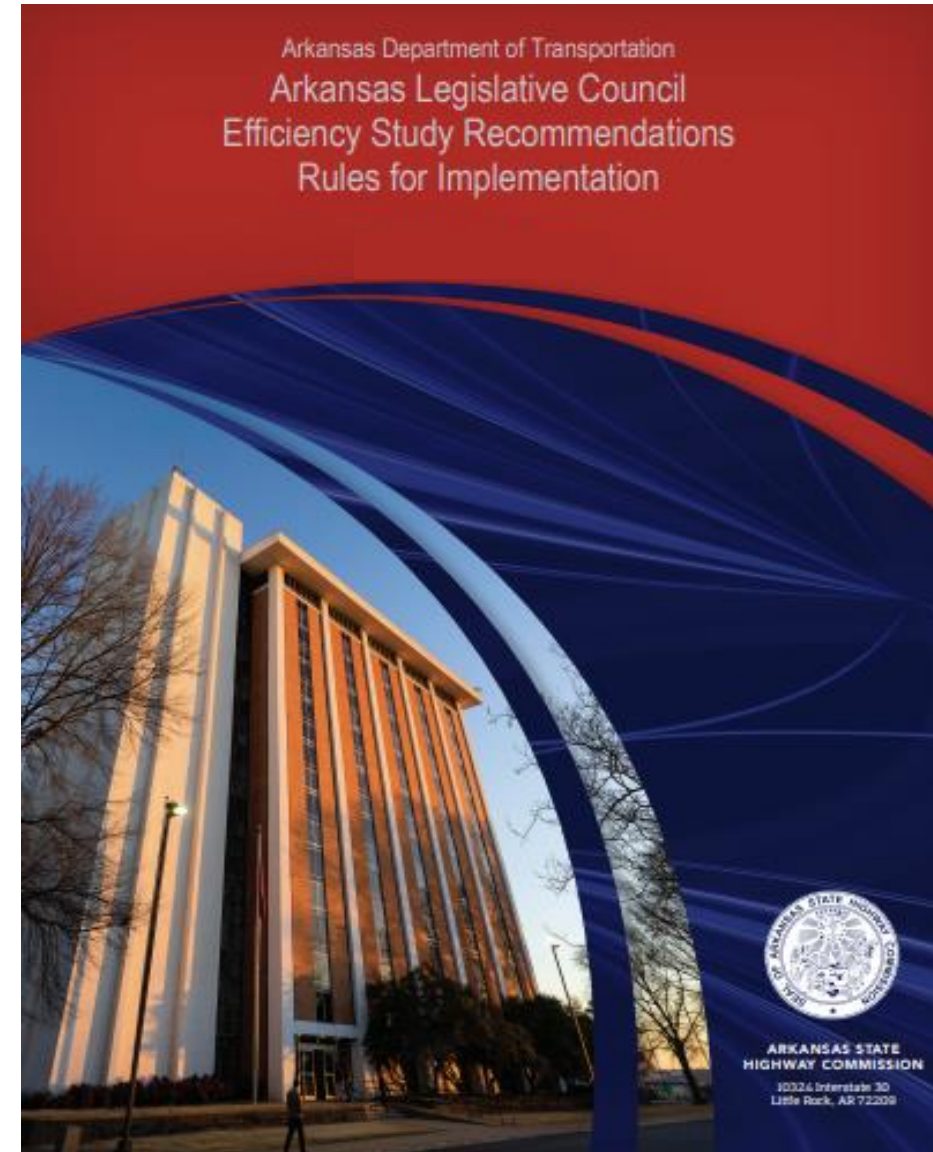


Arkansas Legislative Council Efficiency Study Recommendations

Recommendation #3: Publish the status of construction projects and maintenance activities.

Recommendation #4: Implement a platform that tracks all stakeholder inquiries to resolution.

Recommendation #6: Implement construction contractor performance measurement.

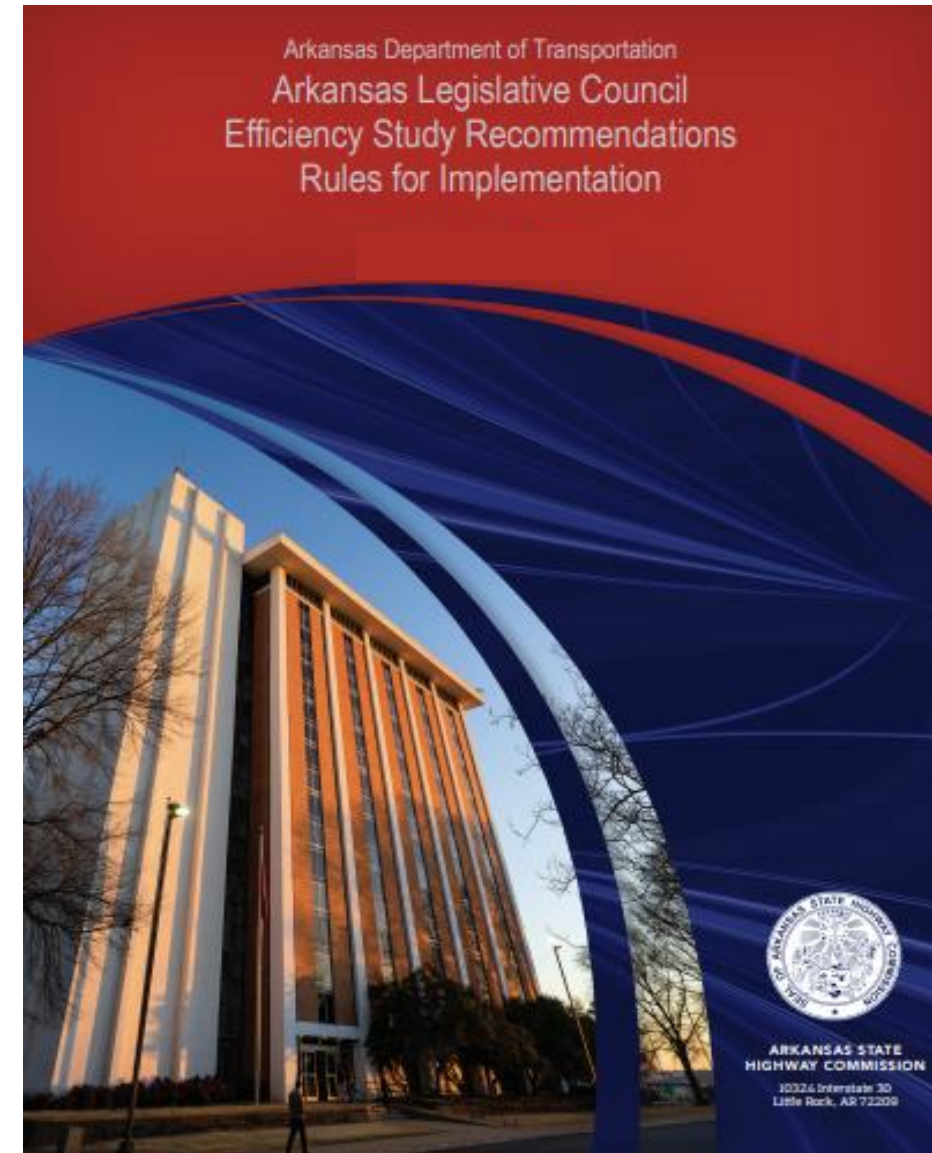


Annual Review and Efficiency Study

Arkansas Department of Inspector General, Office of Internal Audit (OIA) annual report submitted to HCRAS in late August.

OIA's annual report concluded:

- ARDOT has made substantial progress in implementing the recommendations.
- ARDOT has well designed internal controls in place for the Divisions reviewed.





ASK **AR** *DOT*

Scan the QR Code to visit
our customer service portal!



Bid Letting Update

Keli Wylie, P.E.

Assistant Chief Engineer – Program Delivery

Bid Letting Update – Letting Results

August 16, 2023 Bid Letting

Type Projects	Number of Projects	Award Amount
State	6	\$ 88.0 Million
County	2	\$ 0.9 Million
City	--	--
Total	8	\$ 88.9 Million

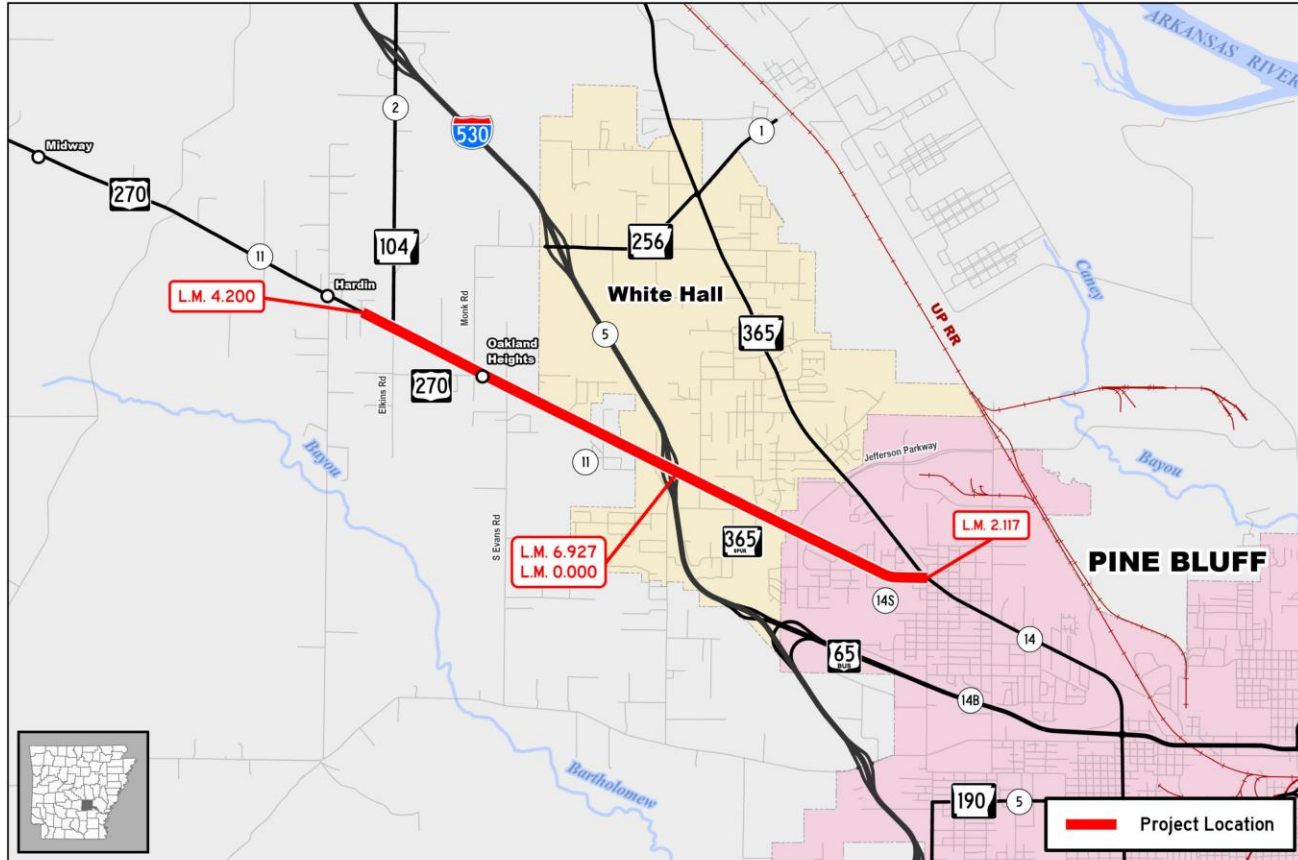
Bid Letting Update – Letting Results

September 20, 2023 Bid Letting

Type Projects	Number of Projects	Award Amount
State	9	\$ 137.9 Million
County	--	--
City	--	--
Total	9	\$ 137.9 Million



Hwy. 104 – Hwy. 365 (Pine Bluff & White Hall)



Job 020626

Hwy. 104 – Hwy. 365 (Pine Bluff & White Hall) (S)

Hwy. 270, Sec. 11

Hwy. 365, Sec. 14S

Jefferson County



Document Path: I:\San1\gis\Programs\Contracts\Sketches\020626\020626.aprx

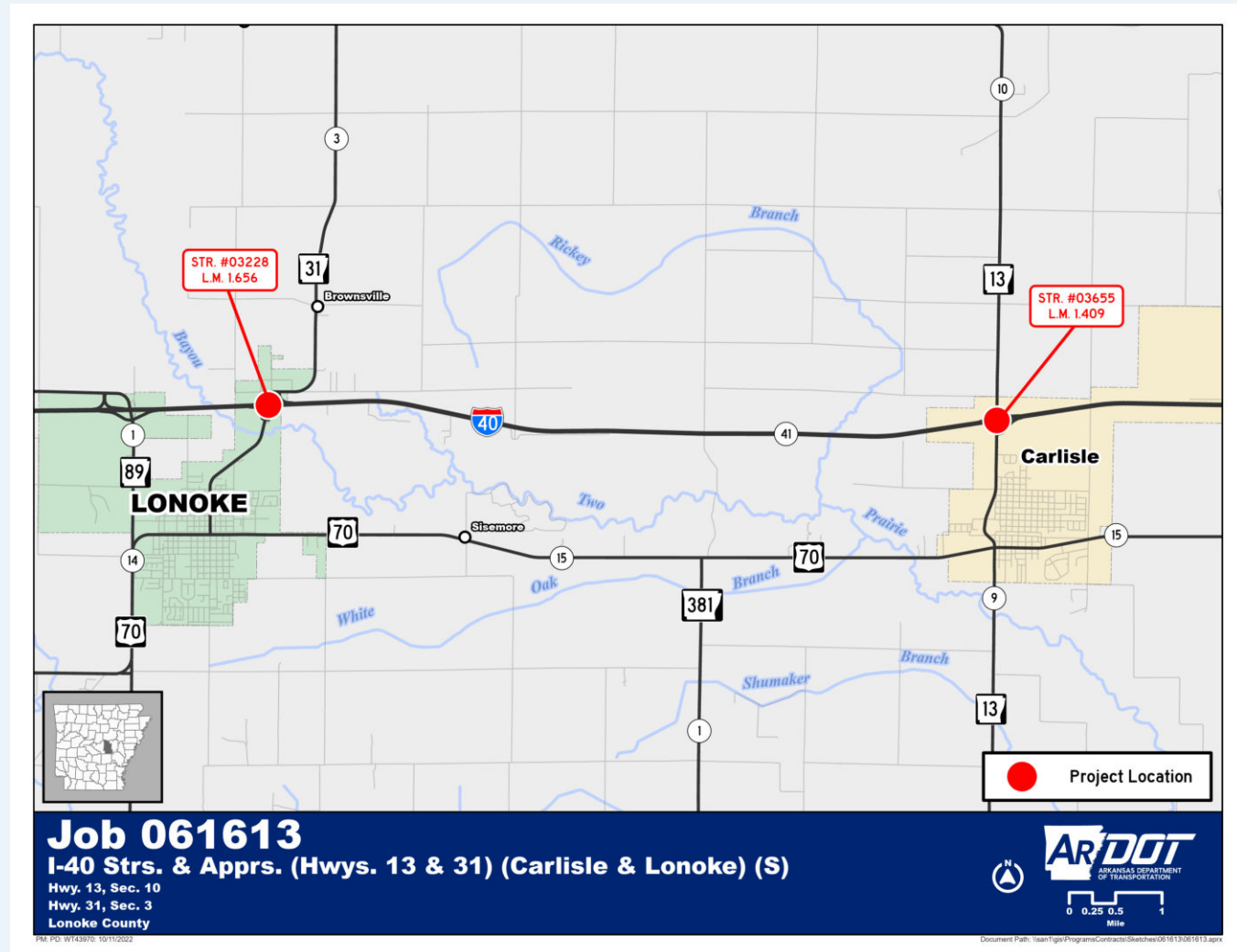
- Major Widening
- 5 Miles
- \$45 Million
- Redstone Construction Group, Inc.
- Estimated Completion: Late 2025

13

31

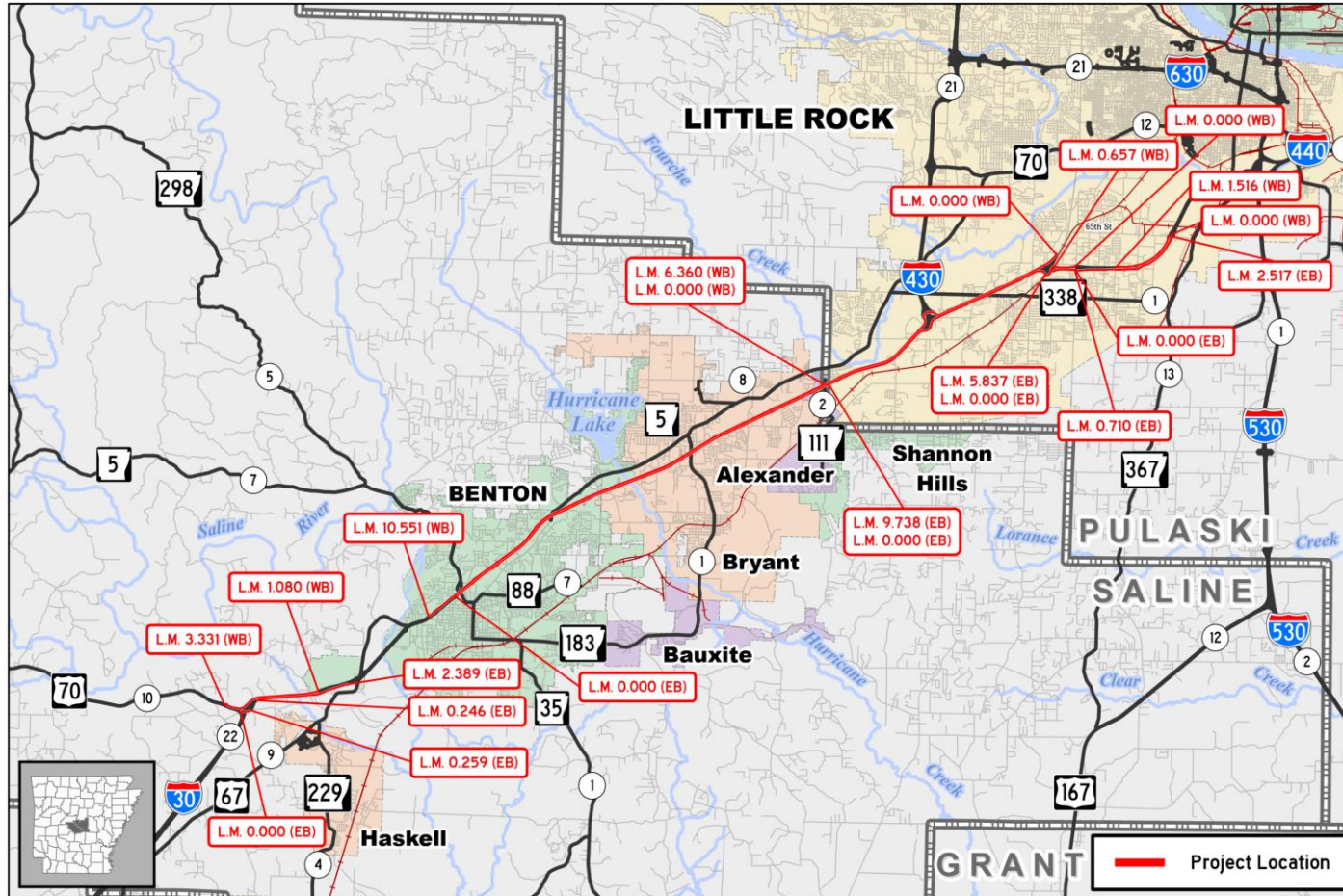
I-40 Strs. & Apprs. (Hwys. 13 & 31) (Carlisle & Lonoke)

- Bridge Replacement
- 2 Bridges
- \$34 Million
- Kiewit Infrastructure South Co.
- Estimated Completion: Late 2024





Hwy. 70 – 65th St. (Frontage Rd.) (Sel. Secs.)



Job 061646

Hwy. 70 – 65th St. (Frontage Rd.) (Sel. Secs.) (S)

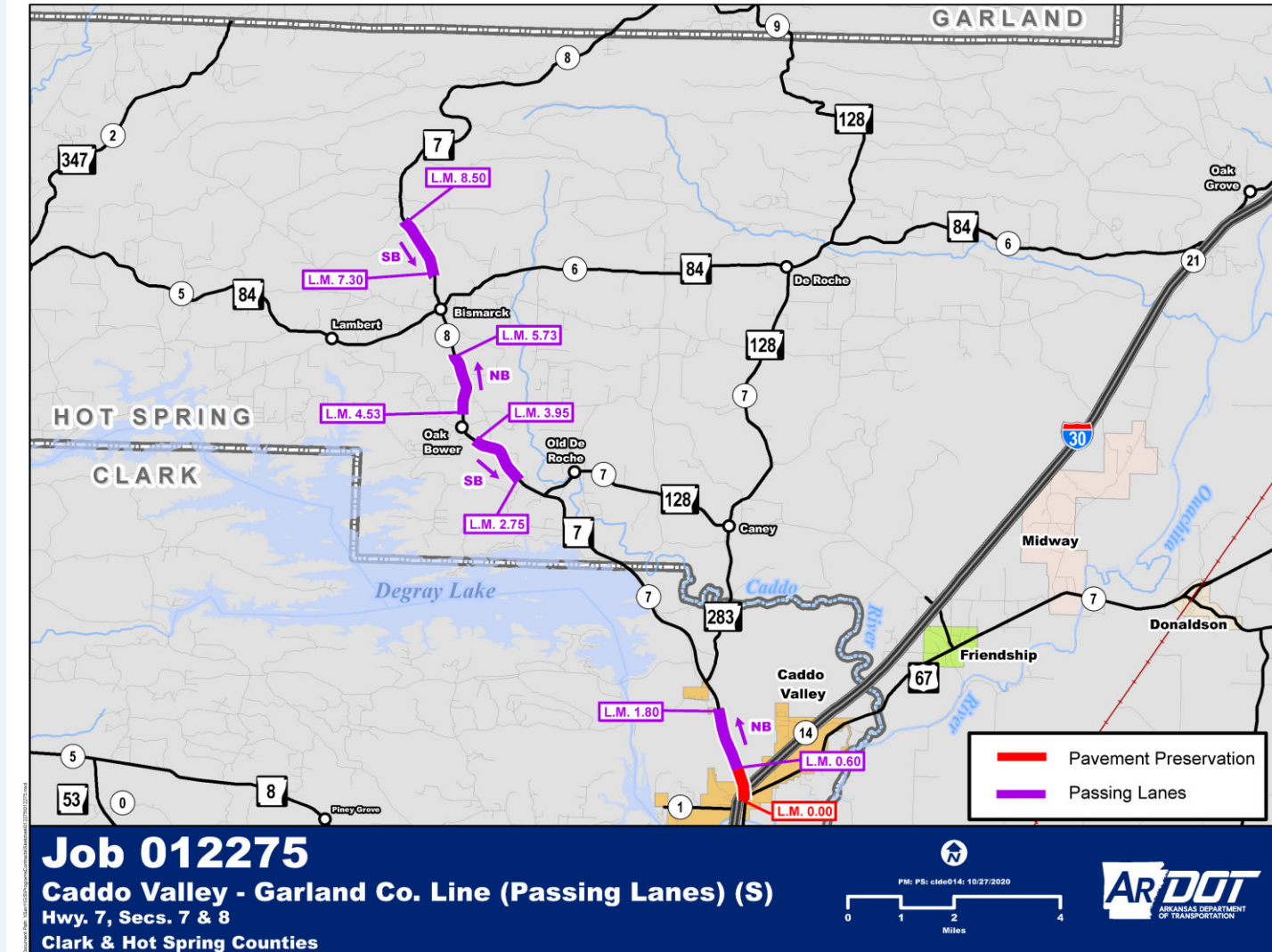
I-30, Various Frontage Rd. Sections
Pulaski & Saline Counties



- Pavement Preservation
- 42 Miles
- \$24 Million
- Cranford Construction Co.
- Estimated Completion: Late 2024

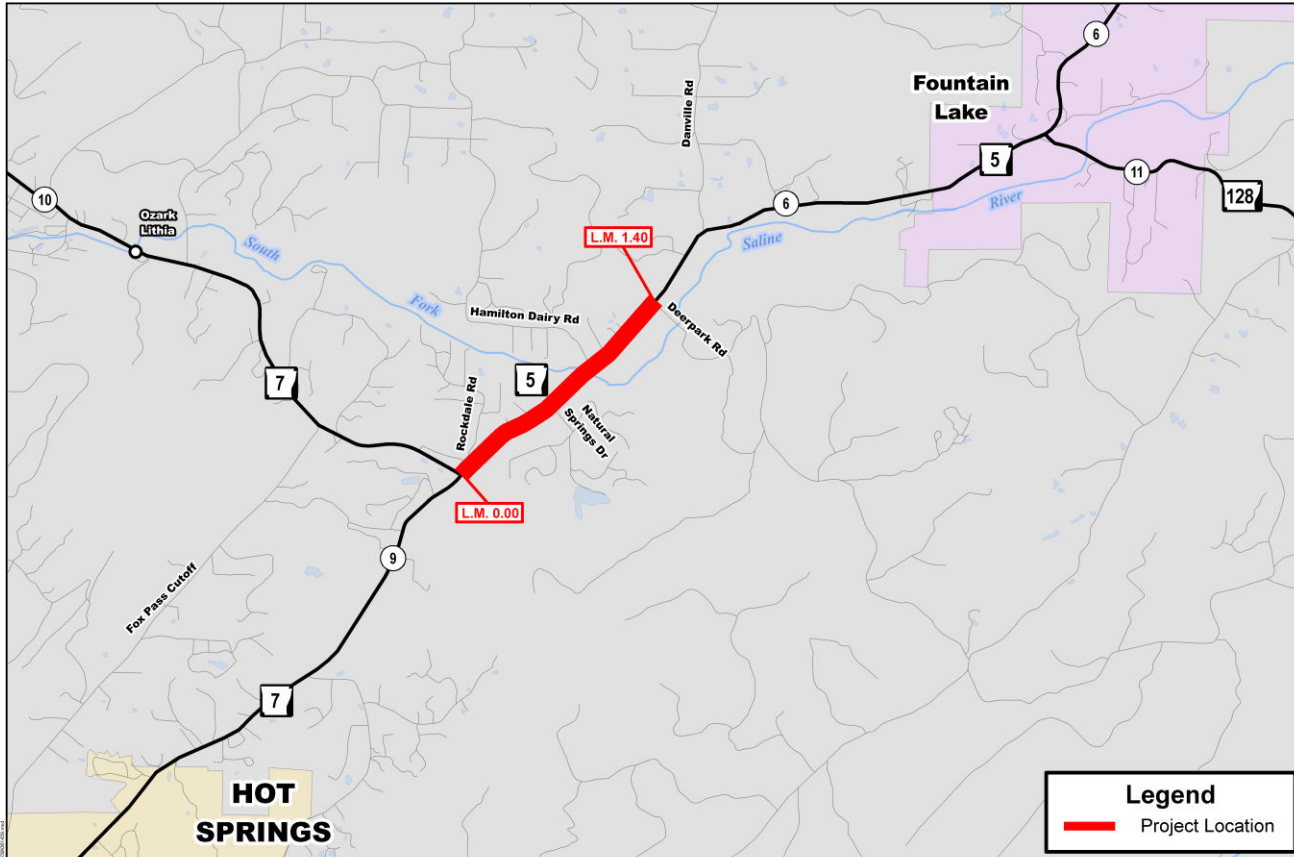
Caddo Valley – Garland Co. Line (Passing Lanes)

- Passing Lanes
 - 2 Northbound
 - 2 Southbound
- 5 Miles
- \$22 Million
- McGeorge Contracting Co., Inc.
- Estimated Completion: Mid-2026





Hwy. 7 – Deerpark Rd. (Safety Impvts.)



Job 061439

Hwy. 7 - Deerpark Rd. (Safety Impvts.) (S)

Hwy. 5, Sec. 6

Garland County

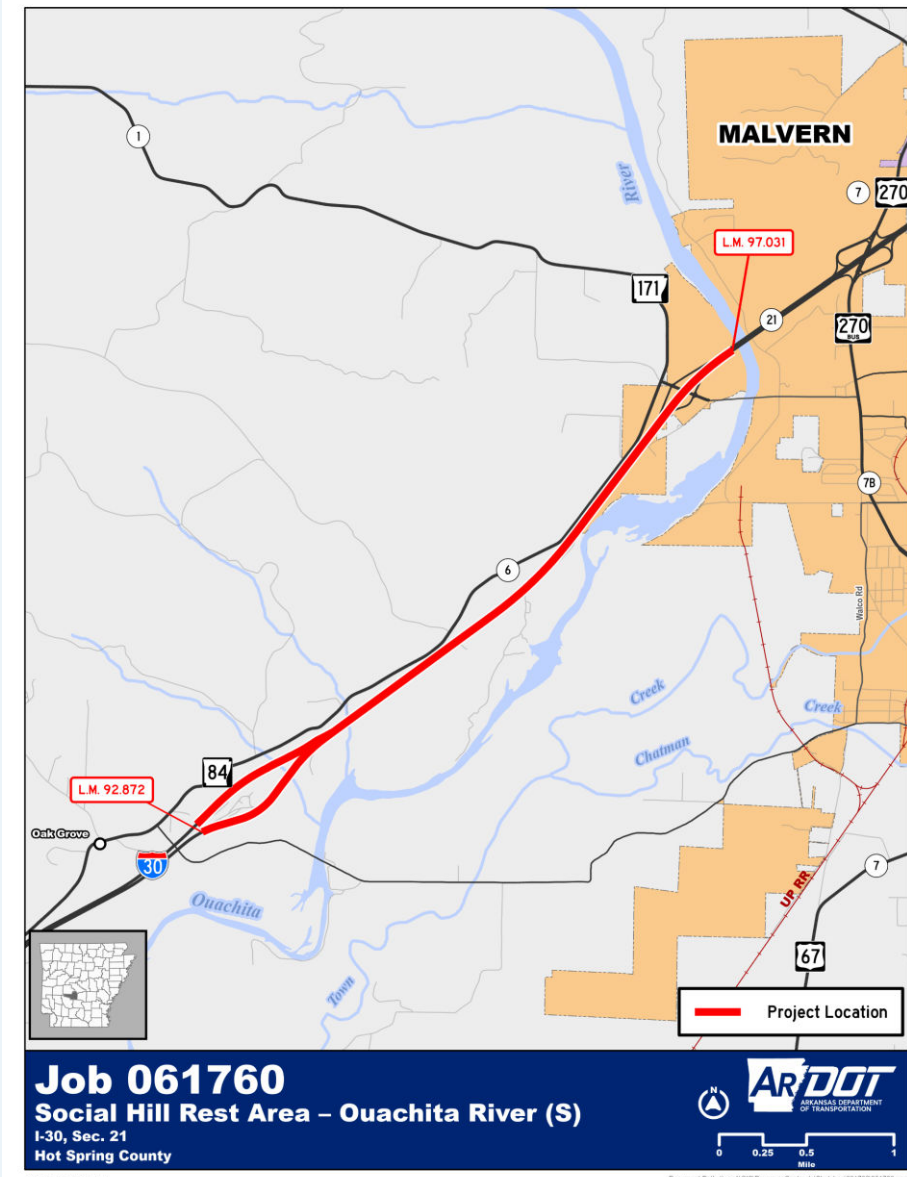


- Safety Improvements/Widening
- 1 Mile
- \$12 Million
- James A. Rogers Excavating, Inc.
- Estimated Completion: Mid-2027



Social Hill Rest Area – Ouachita River

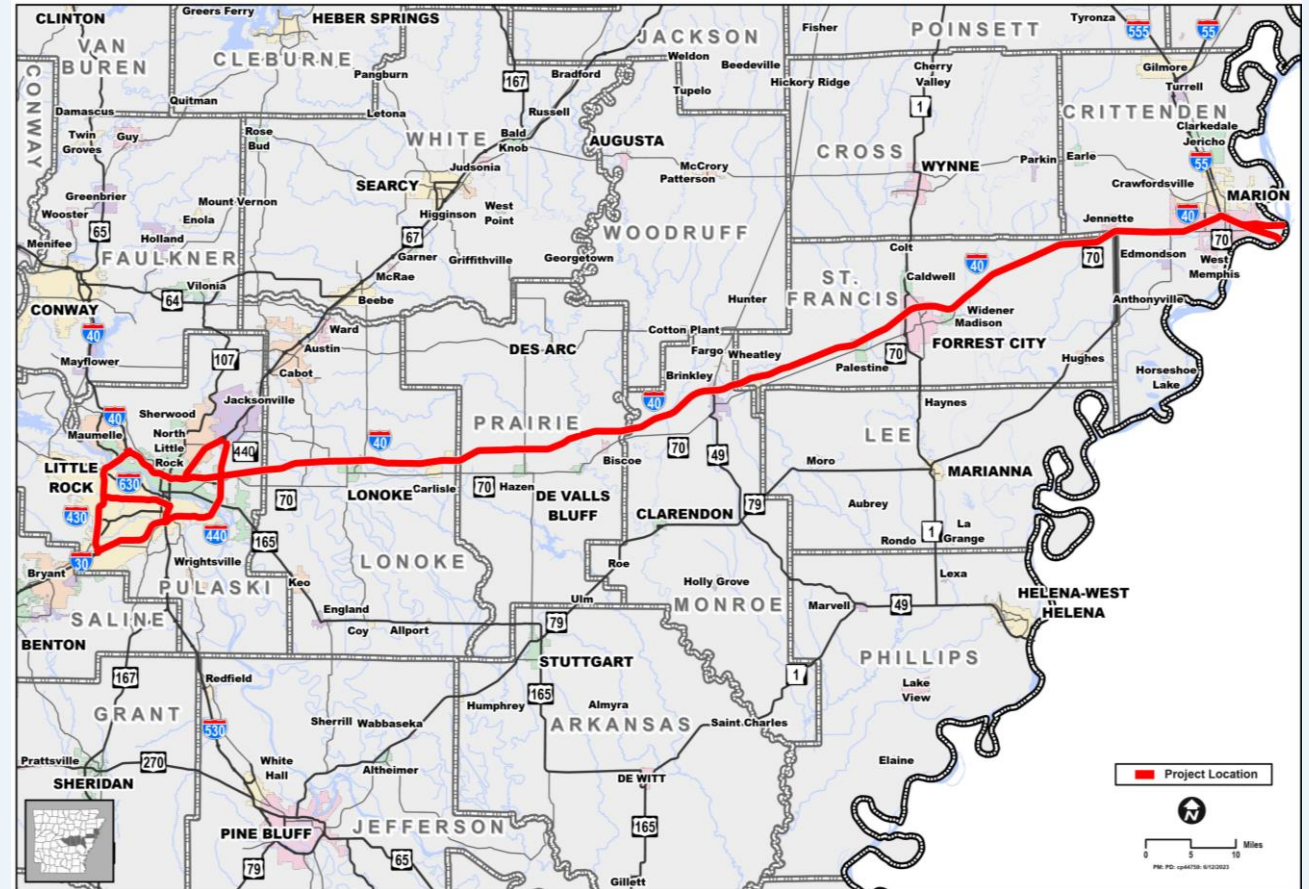
- Pavement Preservation
- \$6 Million
- Redstone Const. Group, Inc.
- Estimated Completion: Mid-2024



Central AR – West Memphis ITS Impvts. Ph. 1



- ITS Improvements
- \$55 Million
- Inline, LLC
- Estimated Completion: Mid-2025



Wrong Way Crash Detection

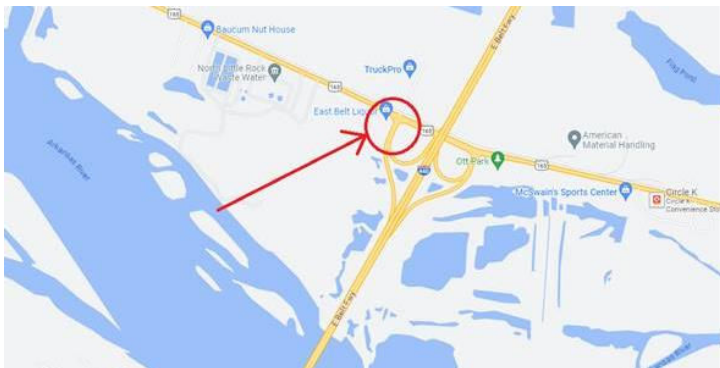
Joseph Hawkins, P.E.

State ITS Engineer



Wrong Way | SIR & TSMO | Maintenance Division

RESEARCH PROJECT TRC 2105



BlinkLink Systems Alerts Reports Admin Help Account

System Alerts Alert Details

Alert Details

Manage Alert More System Info

Sign Activation for Wrong Way
08/05/2023 08:43:31 AM CDT [I-440 SB Exit 7 at Highway 165](#)

Images Video

Correct Traffic Flow:

BlinkLink

System: I-440 SB Exit 7 at Highway 165 Alert Time: 08/05/2023 08:43:31 AM CDT

Prev Alert Next Alert

Alert Resolution

Select Resolution

Unresolved

Authorized Vehicle - Emergency Response

Authorized Vehicle - Maintenance

False Positive - Animal Trigger

False Positive - No Vehicle Present

False Positive - Right Way Object Trigger

False Positive - Weather Trigger

Incompliant Vehicle - Backed Up

Incompliant Vehicle - Median Crossing

Non-Vehicle - Bicycle

Non-Vehicle - Pedestrian Detection

Test Event - System Testing

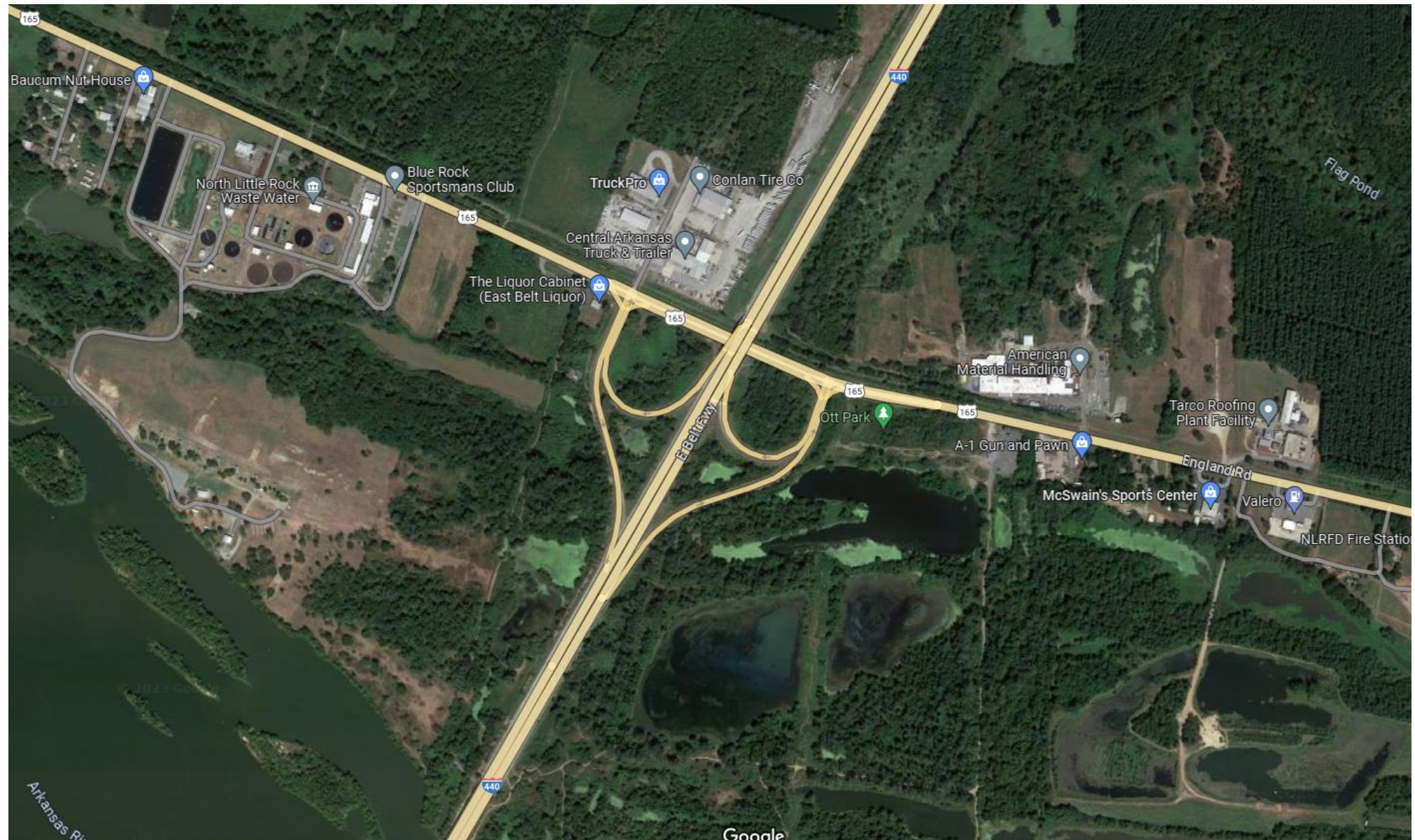
Wrong-Way Vehicle - Continued Wrong-Way

Wrong-Way Vehicle - Result Unconfirmed or Unknown

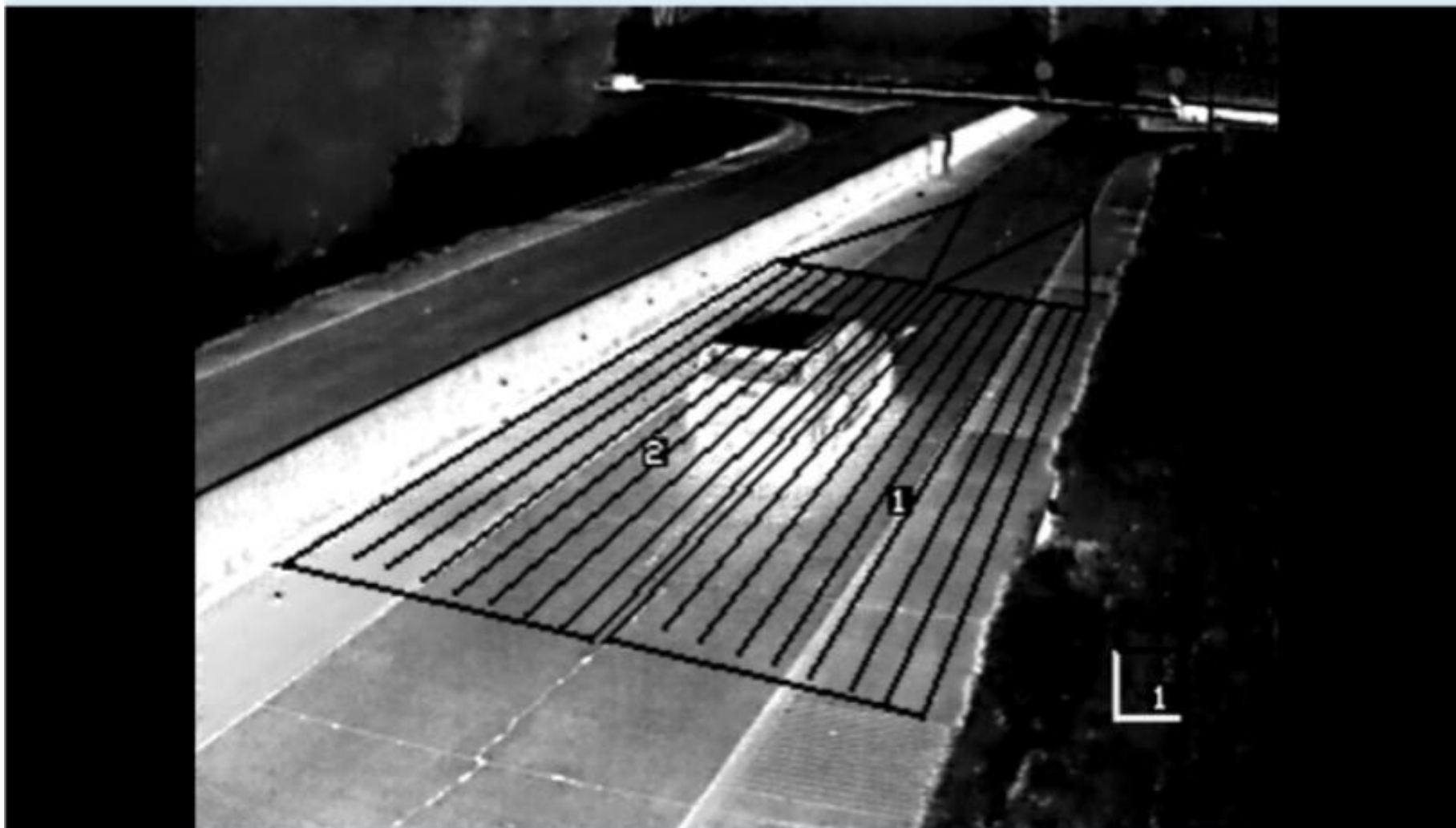
Wrong-Way Vehicle - Self-Corrected



Partial Cloverleaf AB – 2 Quadrant I-440 & HWY. 165 | ENGLAND EXIT | NLR



Wrong Way Alert Thermal Sensor

[Request Image](#)

AR DOT 2nd Wrong Way Detection





2nd Wrong Way Detection

DRIVER MADE EARLY LEFT-HAND TURN | SECOND CAR FOLLOWED





3rd Wrong Way Detection

WWDS ACTIVATED | DRIVER TURNED AROUND





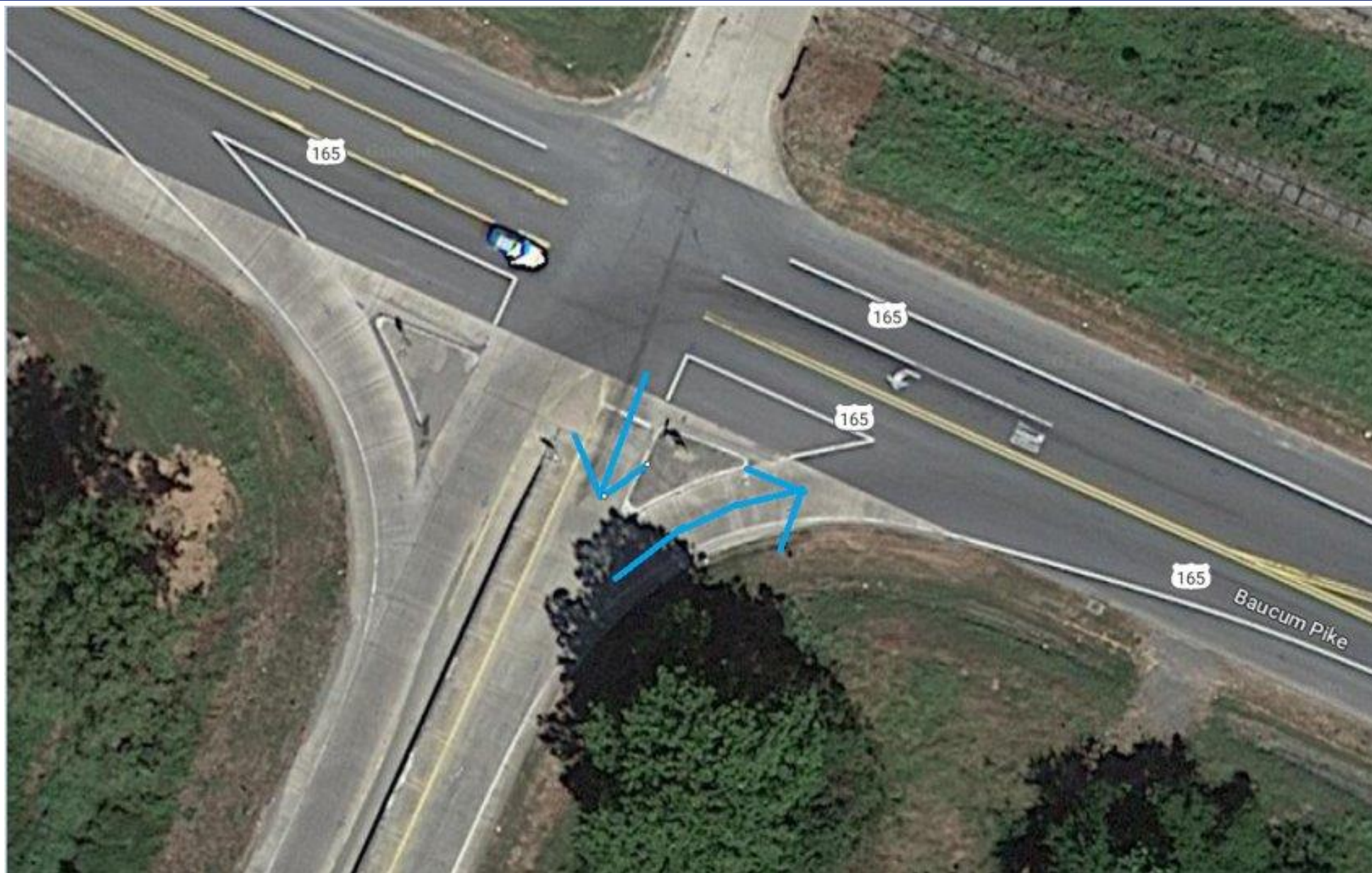
4th Wrong Way Detection WWDS ACTIVATED | DRIVER SELF-CORRECTED





Potential Point of Confusion

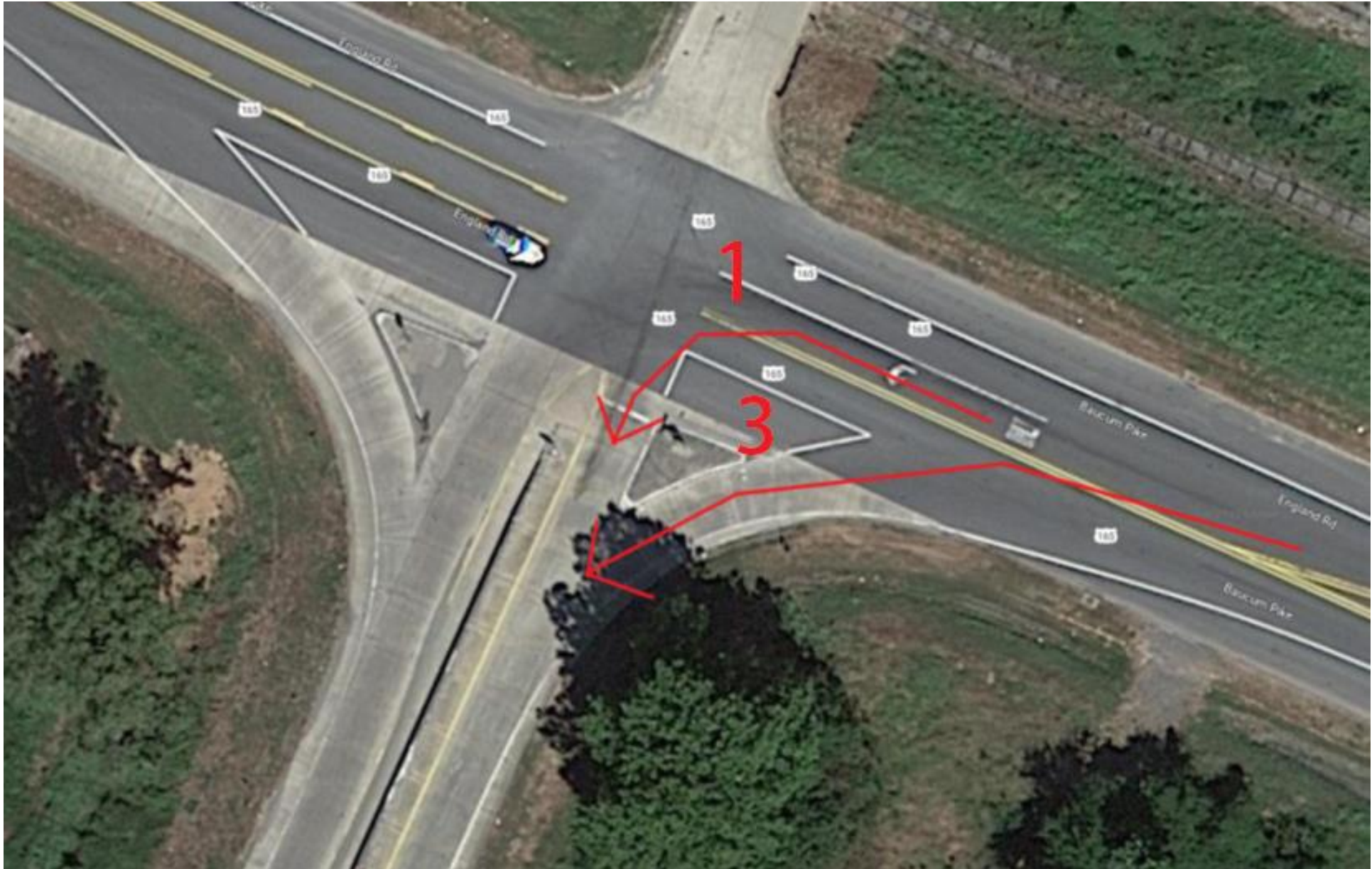
3 OUT OF 4 DRIVERS USED CHANNELIZED RIGHT TURN





Potential Point of Confusion

3 OUT OF 4 DRIVERS USED CHANNELIZED RIGHT TURN





Snap-Back Delineators Installed PROVIDE VISUAL AID TO DRIVERS





District 6 INSTALLED SNAP-BACK DELINEATORS







Maintenance Activity Update

Rex Vines, P.E.

Chief Engineer – Operations

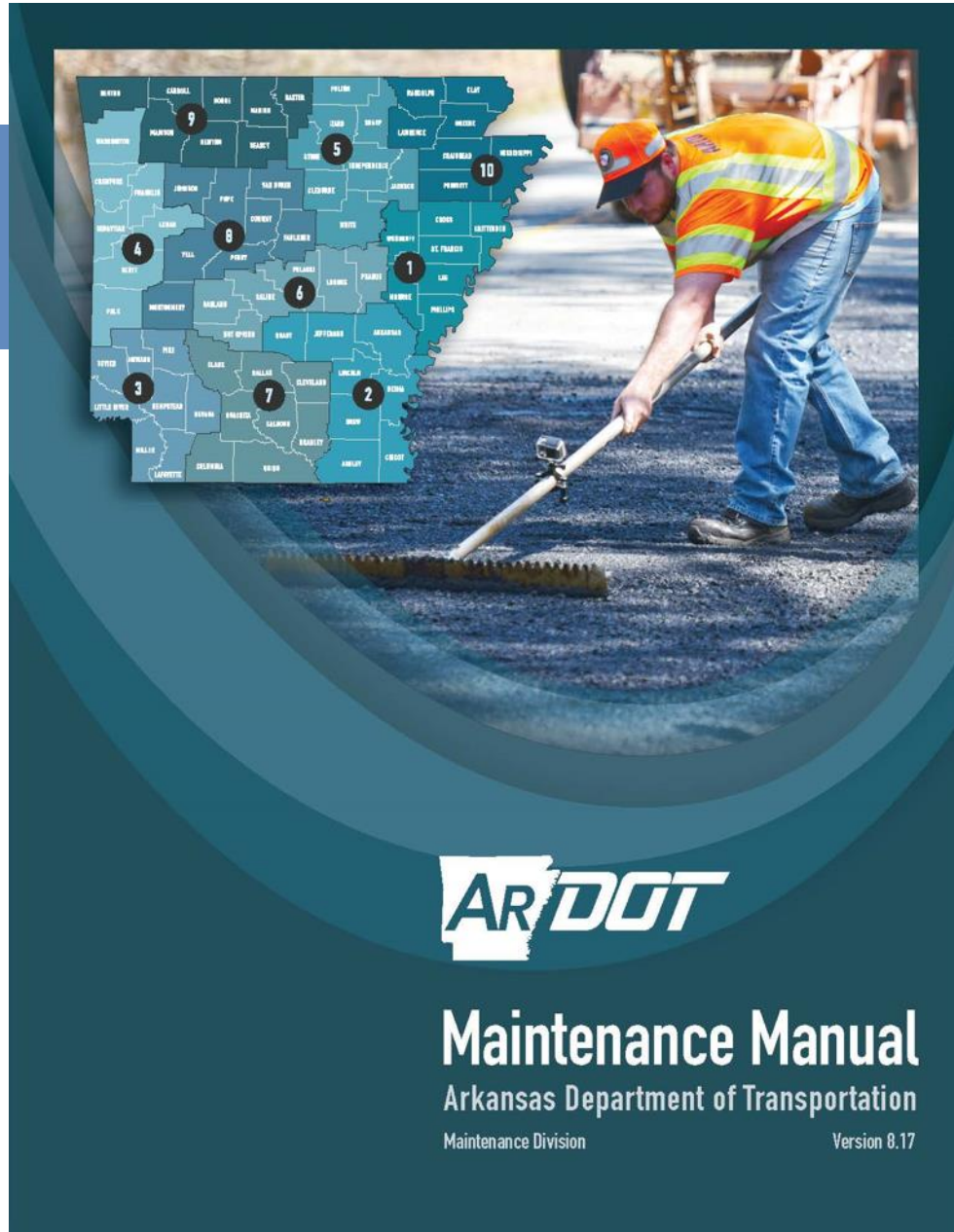
The background image shows a road construction or maintenance scene. In the foreground, a worker in an orange safety vest and hard hat is using a tool on the pavement. Behind them, a yellow excavator is visible. To the right, another worker is standing near a white pickup truck. The scene is set on a paved road with a grassy area and trees in the background under a clear blue sky.

ARDOT **Maintenance Activities**

Guardrail Patching
Pipe Culverts Cable Barrier Sweeping
Snow & Ice Milling
Leveling Joint Repair
Stripping Ditch Cleaning Drop Inlets
Sealing Litter & Debris
Mowing Signs

Maintenance Activities

- Crews in all 75 Counties
- 10 Maintenance Districts
- Each District has:
 - Bridge Repair Crew
 - General Maintenance Crew
 - Sealing Crew
 - Sign Crew
 - Shop Crew



Maintenance Activities

POTHOLE PATCHING





Maintenance Activities

CONCRETE PAVEMENT PATCHING



Maintenance Activities

BRIDGE DECK PATCHING



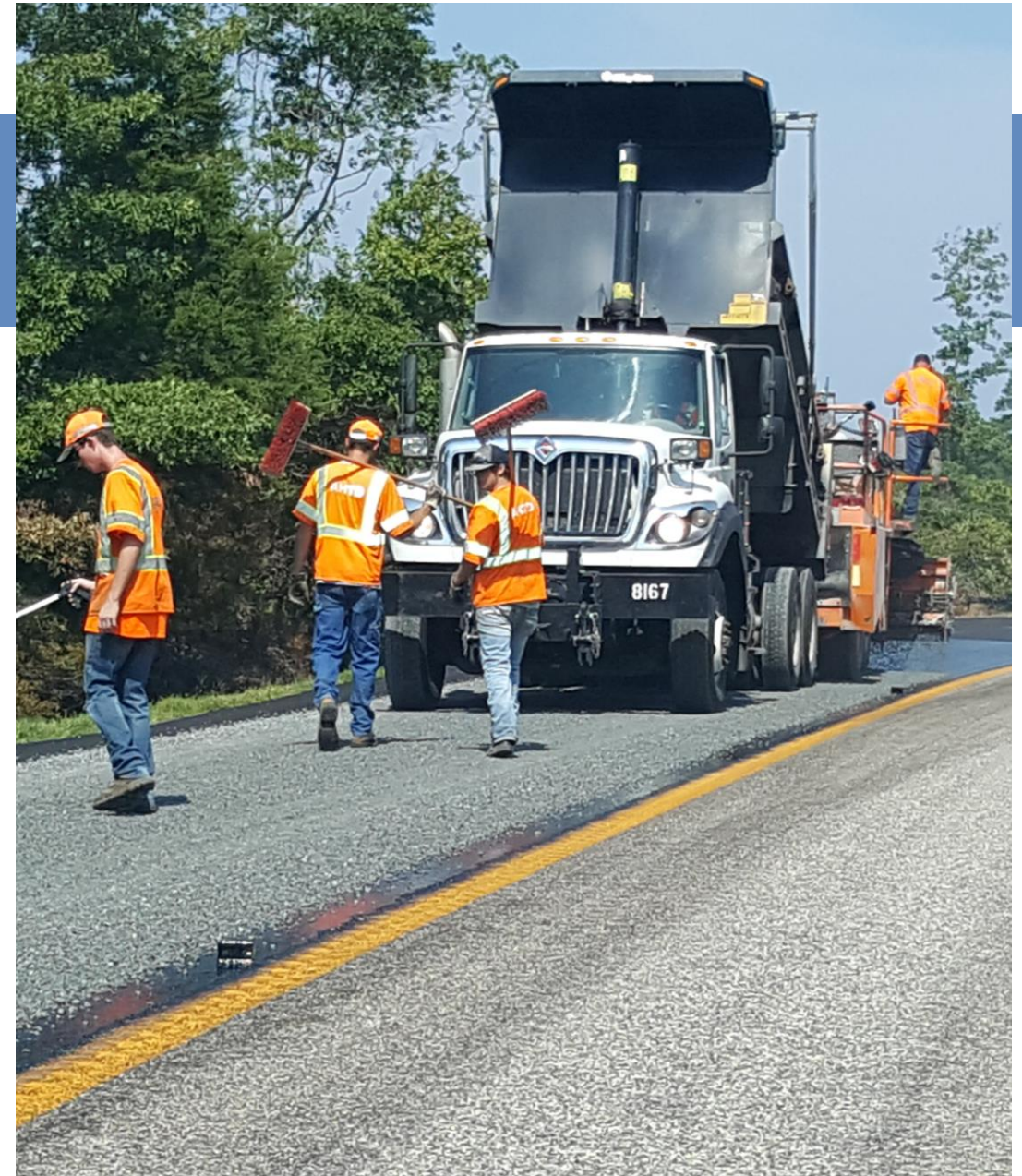
Maintenance Activities

LEVELING & RESURFACING



Maintenance Activities

SEALING

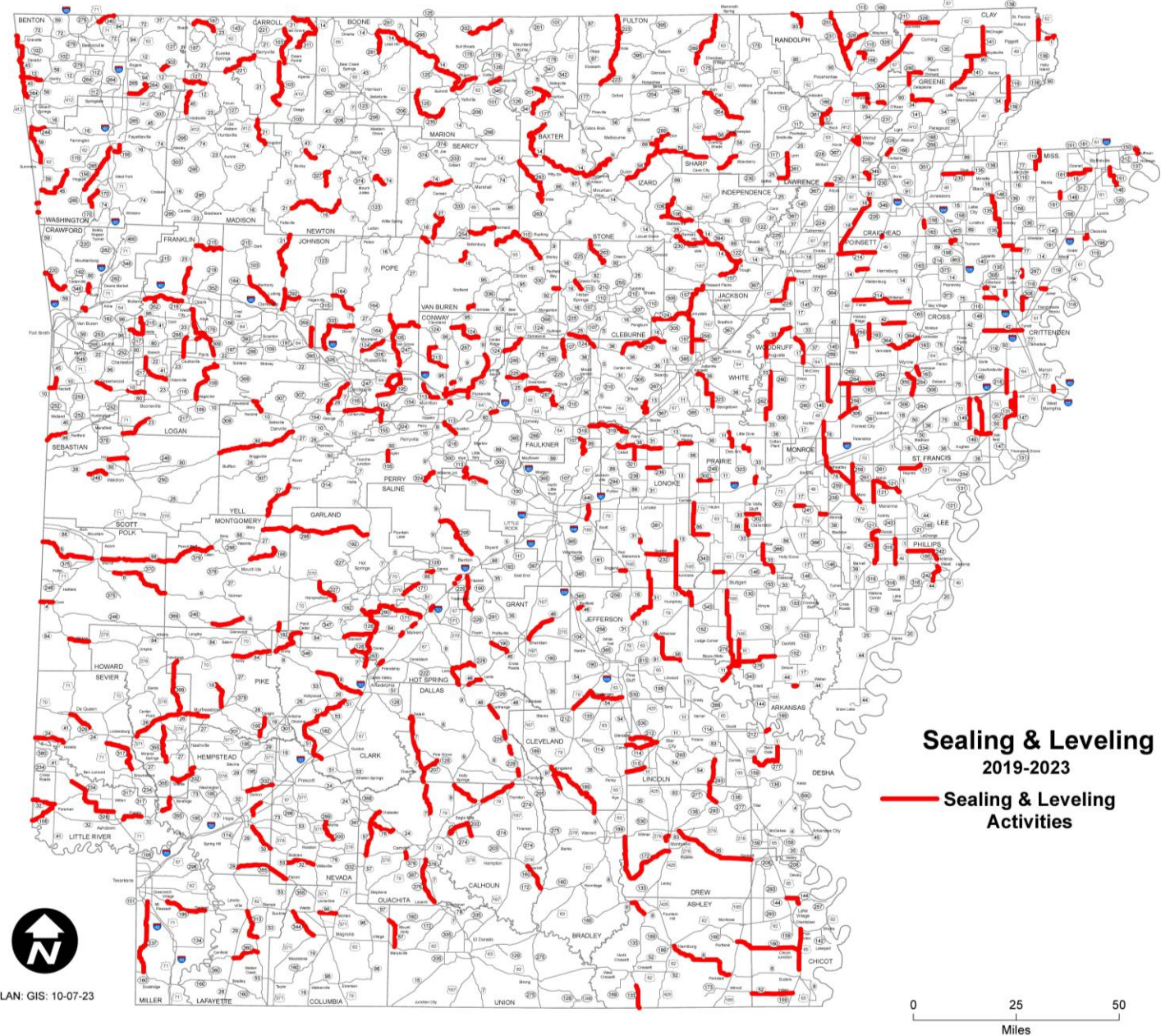


Maintenance Activities

SEALING & LEVELING

2019 - 2023

- 2,479 Miles of State Highways Preserved Over Past 5 Years





Maintenance Activities

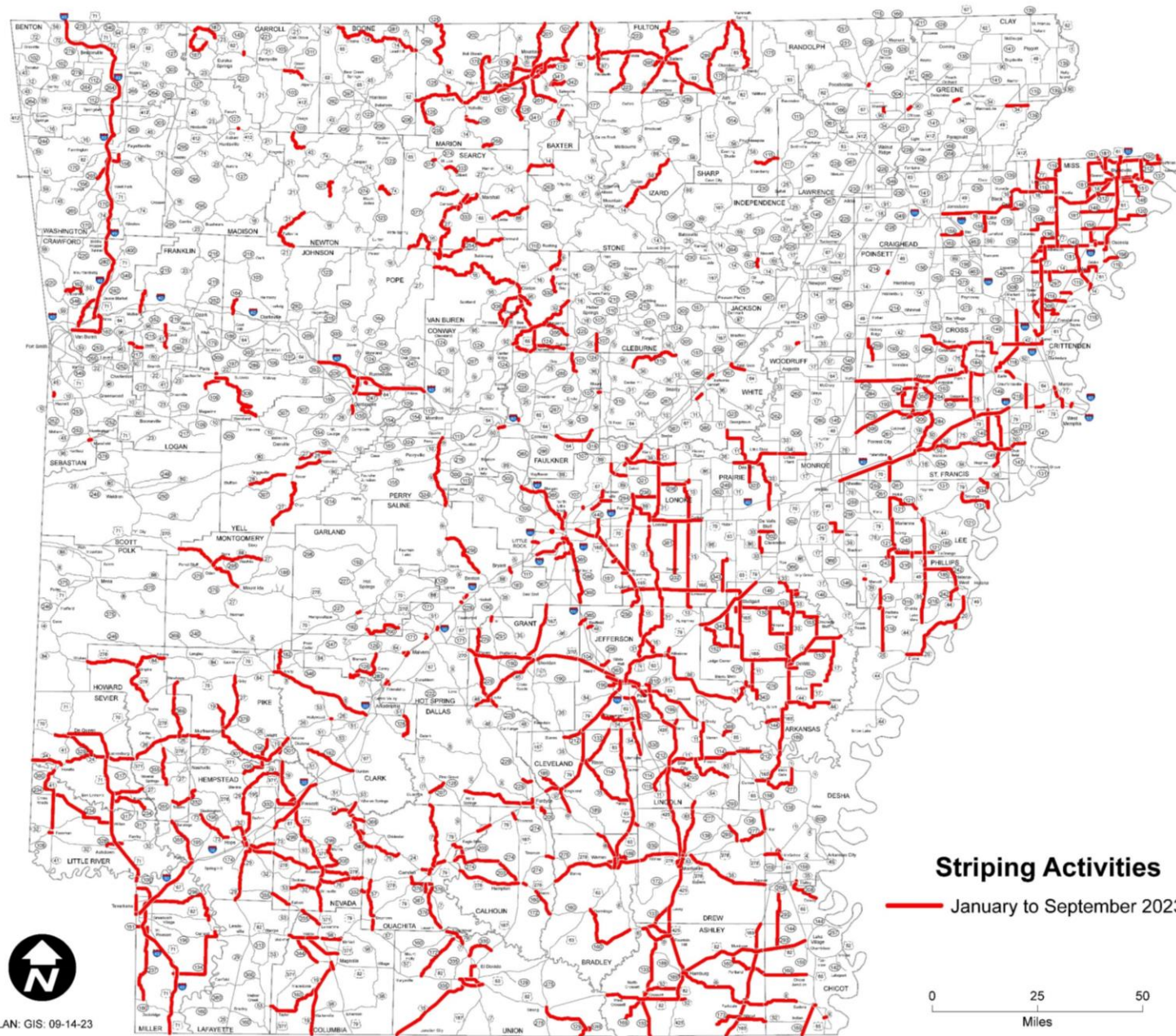
DITCHING & CULVERT REPLACEMENT



Maintenance Activities

STATEWIDE STRIPING CREWS





PLAN: GIS: 09-14-23

Maintenance Activities

STATEWIDE STRIPING CREWS

January – September 2023

- 5,368 Miles of Highway
- 309,896 Gallons of Yellow & White Paint
- 2,233,950 Pounds of Glass Beads



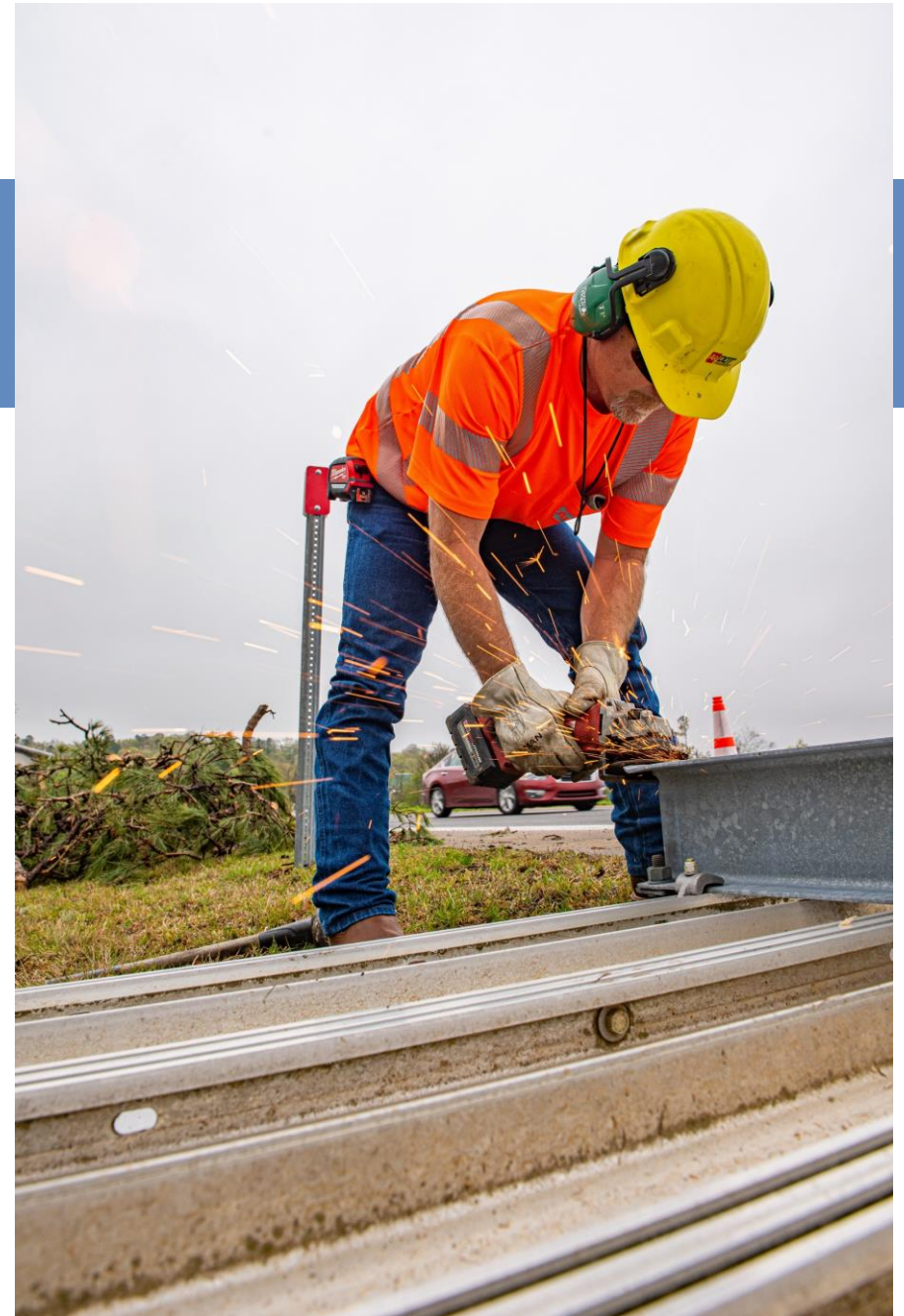
Maintenance Activities

STATEWIDE SIGNING EFFORTS

- More Than 600,000 Signs on State Highway System
- 39,085 Signs Produced this Year

Maintenance Activities

STATEWIDE SIGNING EFFORTS





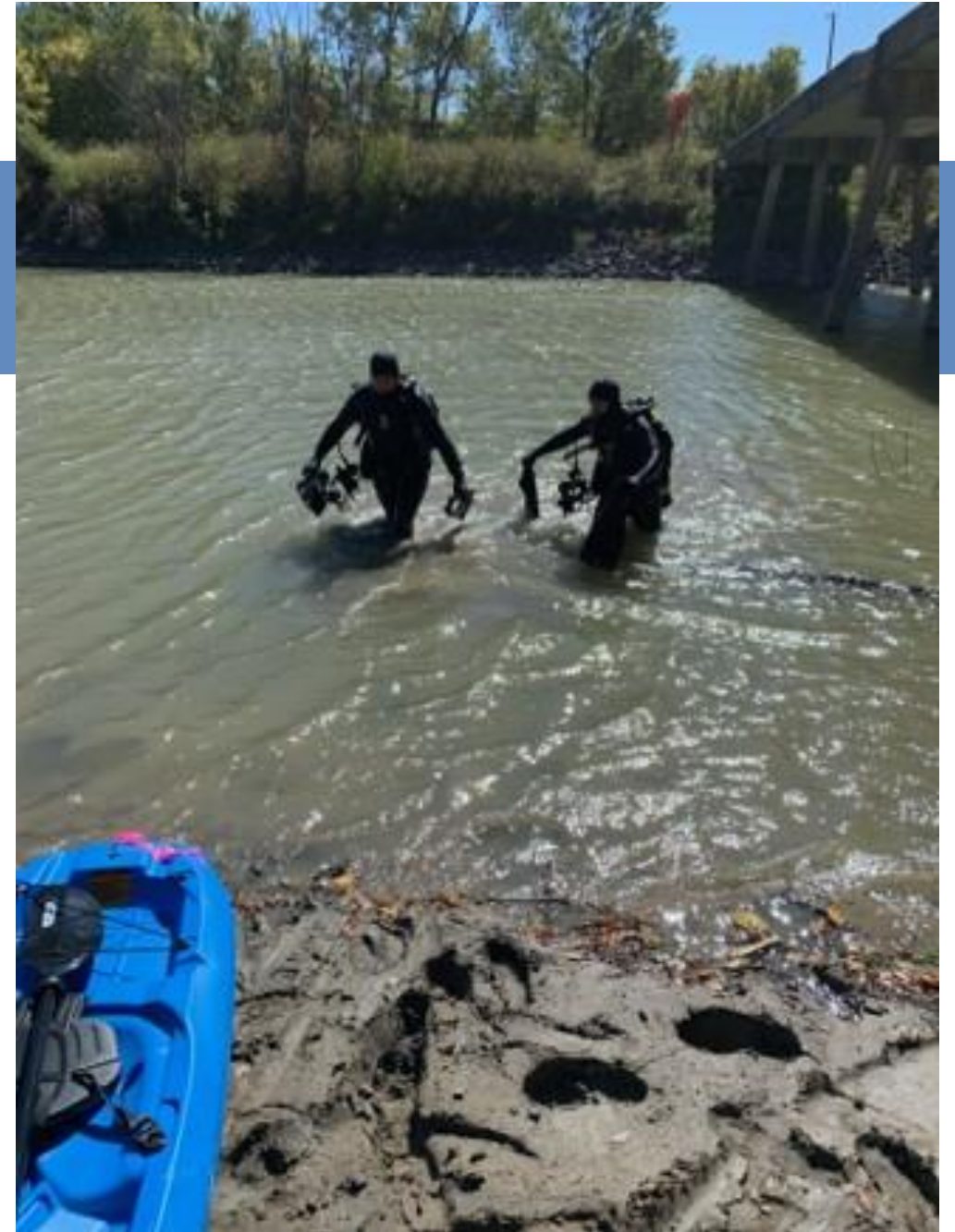
Maintenance Activities

BRIDGE INSPECTION



Maintenance Activities

BRIDGE INSPECTION



Maintenance Activities

BRIDGE MAINTENANCE



Maintenance Activities

BRIDGE MAINTENANCE



Maintenance Activities

IN-HOUSE BRIDGE BUILDING CREW



Maintenance Activities

BRIDGE REPLACEMENT – BOX CULVERTS



Maintenance Activities

IN-HOUSE POLYMER OVERLAY CREW

- Completed 11 Bridges in 2023 Totaling 284,325 Square Feet
- Polymer Overlays Protect Bridge Decks for up to 20 Years



Maintenance Activities

MOWING

- ARDOT Mows 275,000 Acres/Year
- 3 Mowing Cycles/Year
 - Spring
 - Summer
 - Fall
- Mowing Contractors
 - Interstates & Primary Highways
 - Includes Litter Pickup/Mowing Cycle



Maintenance Activities

LITTER PICK UP



Maintenance Activities

DEBRIS REMOVAL





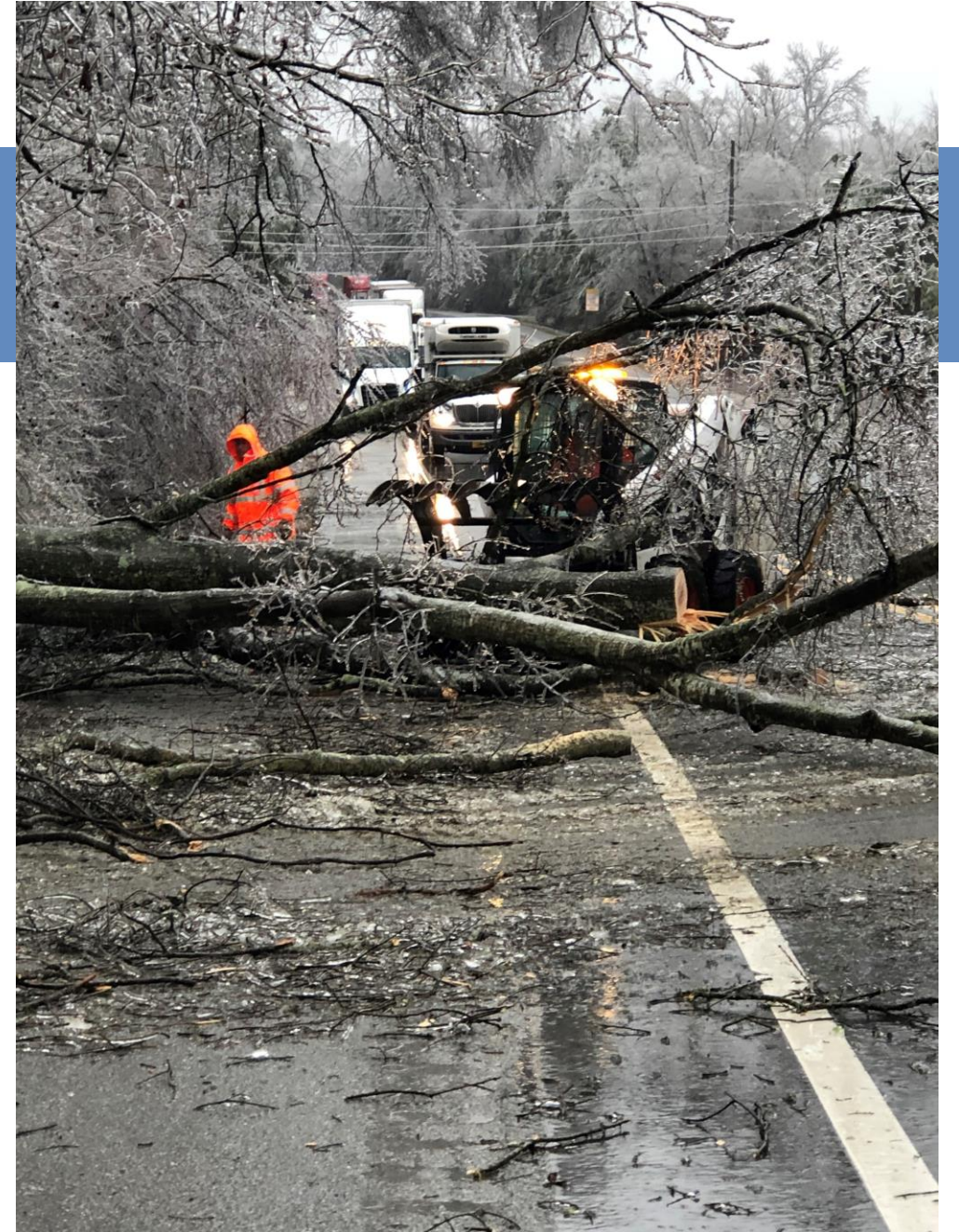
Maintenance Activities

EMERGENCY RESPONSE



Maintenance Activities

WINTER WEATHER



Maintenance Activities

DISTRICT 7



2023 Maintenance Supervisor Conference

Deric Wyatt, P.E.

State Maintenance Engineer

2023 Maintenance Supervisor **CONFERENCE**





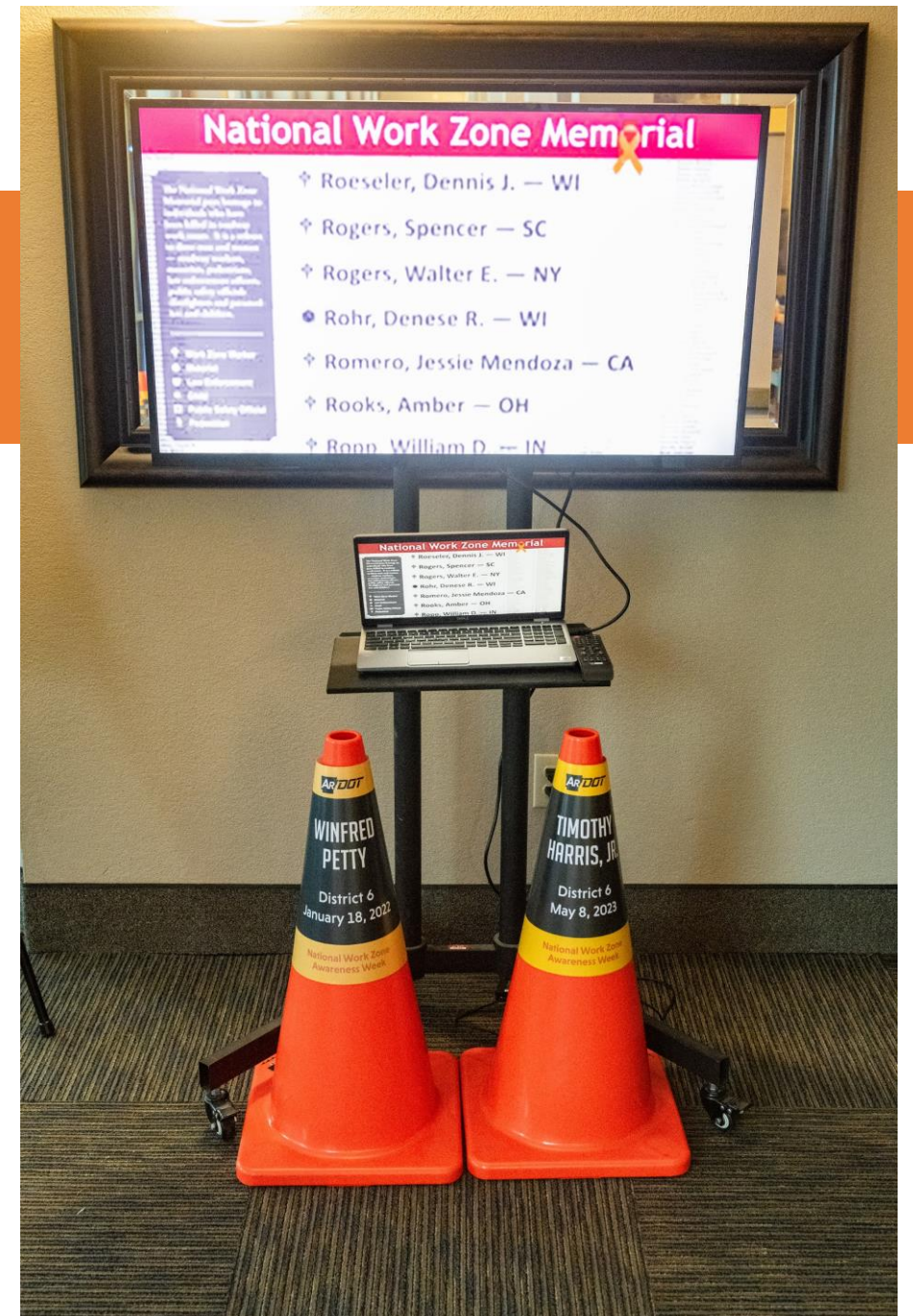
ARDOT Maintenance Supervisors



SAFETY

- Presentations
- Discussions
- Best Practices
- Fellowship

WORKER MEMORIAL





10-POINT BEST PRACTICE PLAN FOR RESPONDING TO DEBRIS REMOVAL

-  **1** Turn on warning lights as you approach debris.
-  **2** Park in advance of debris on shoulder closest to debris, as far from traffic as possible.
-  **3** Always use a spotter on roadways that are High-Speed (65MPH) or Moderate to High-Volume.
-  **4** Consider whether the hazard warrants the danger involved in removing the hazard.
-  **5** Keep an eye on and face on-coming traffic, **NEVER** turn your back on traffic.
-  **6** If the hazard in the travel lane can be removed from the shoulder with a tool, use tool during an adequate gap in traffic.
-  **7** When High-Speed (65 MPH) and High-Volume Traffic exists, **NEVER** enter or cross a live lane of traffic for any reason.
-  **8** If conditions warrant entering the live lane, **WAIT** until certain you have time to walk to get object, not run, and walk back to safety.
-  **9** Avoid crossing more than one lane of traffic.
-  **10** If in doubt, **DON'T GO**. Use a mobile lane closure or truck mounted device to remove debris from live lanes, especially on multi-lane freeways.



REPORT SAFETY CONCERNS

We want your voice to be heard. Employees should report concerns to the Safety Section.



SCAN THE QR CODE*
TO REPORT!

* <https://cvets.mv/c8002>

SAFETY INITIATIVES





SAFETY INITIATIVES





BBQ CONTEST



2023 Maintenance Supervisor **CONFERENCE**



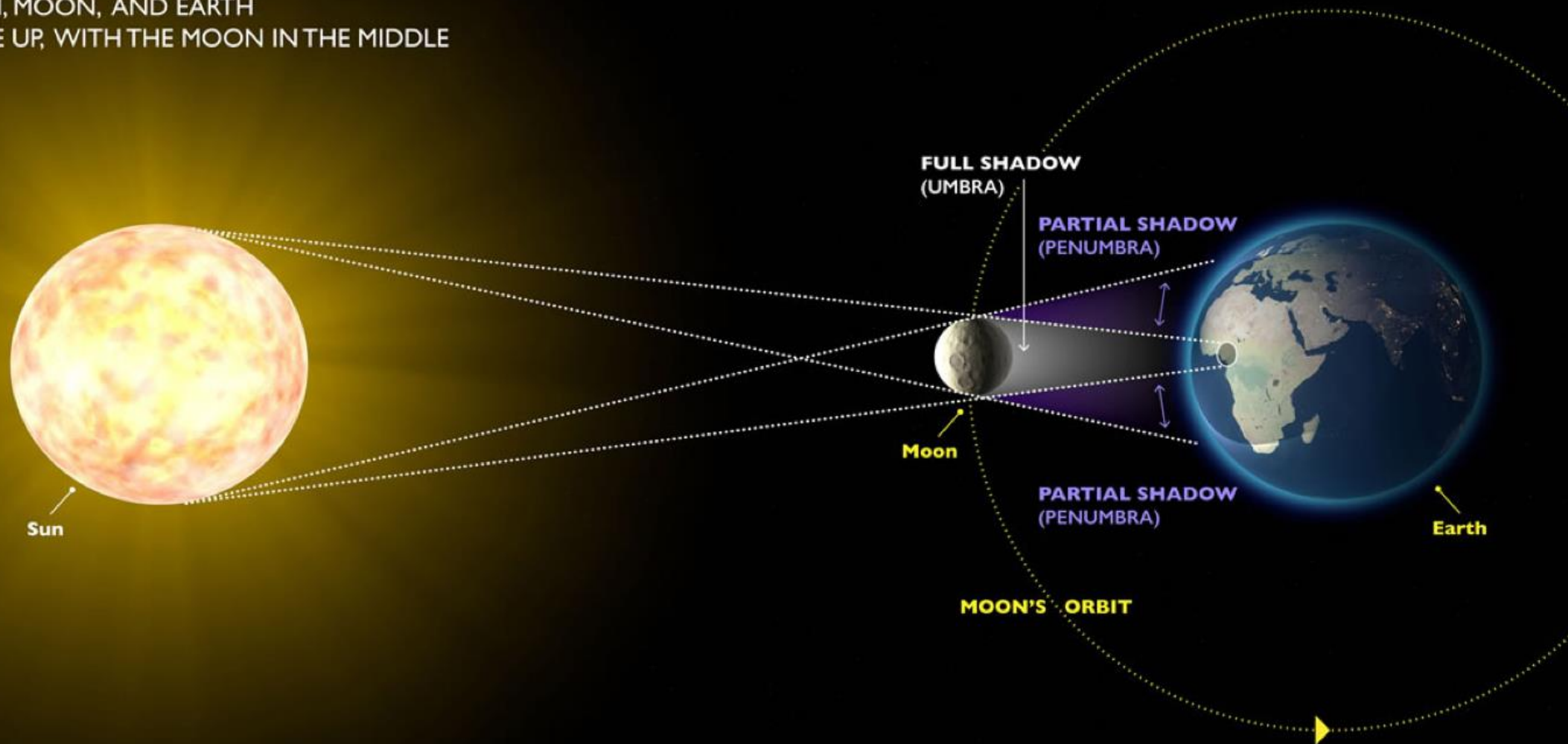
2024 Total Solar Eclipse

Steve Frisbee, P.E.

Assistant Chief Engineer – Maintenance

SOLAR ECLIPSE

SUN, MOON, AND EARTH
LINE UP, WITH THE MOON IN THE MIDDLE



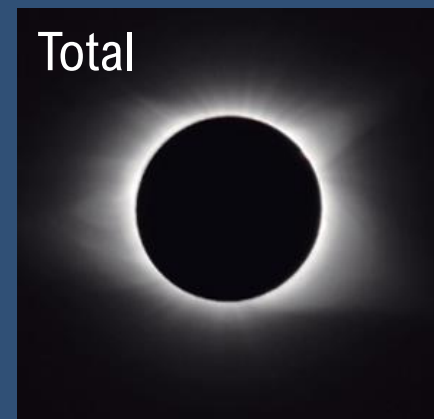
Partial

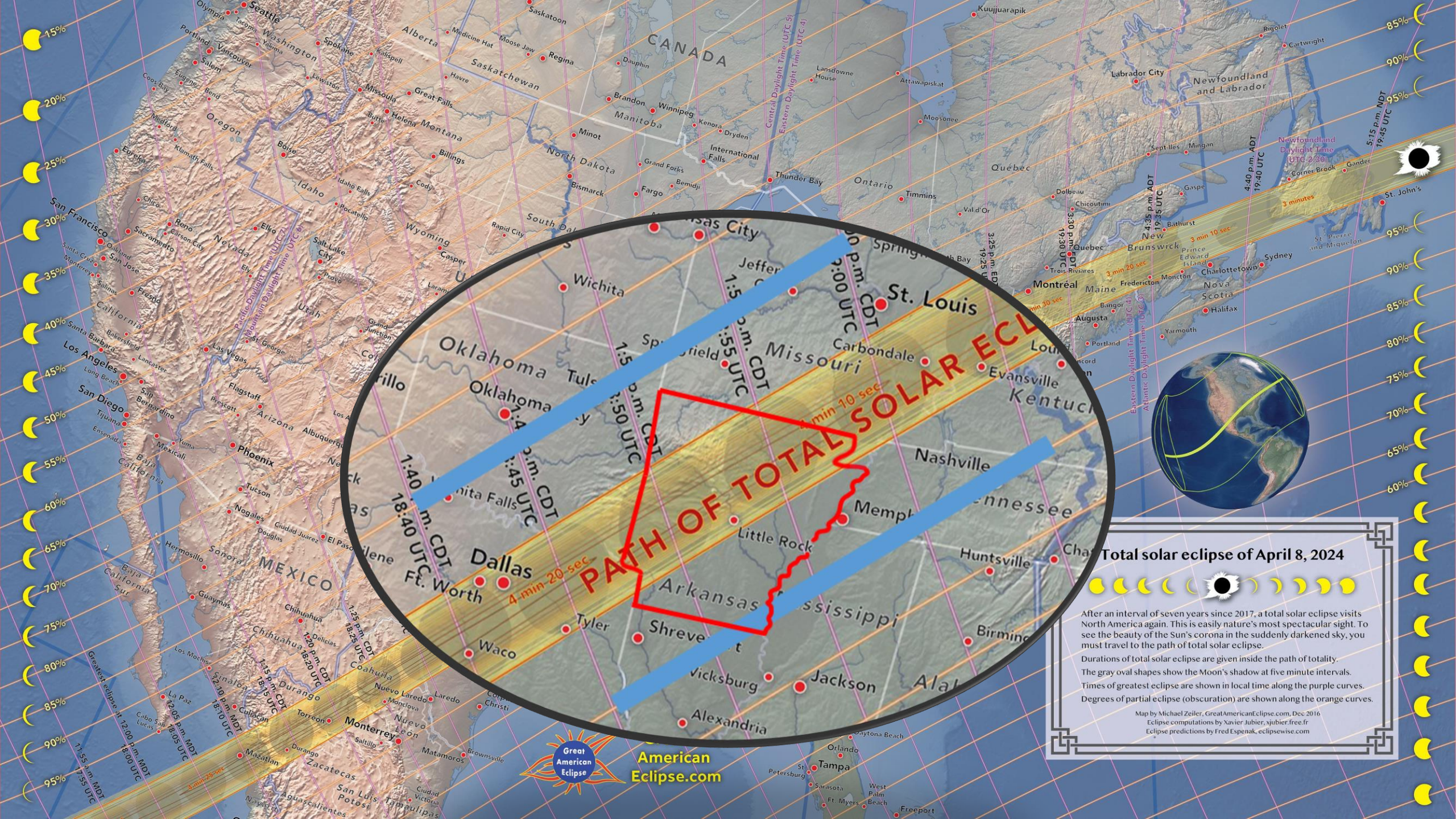


Annular



Total





Total solar eclipse of April 8, 2024

After an interval of seven years since 2017, a total solar eclipse visits North America again. This is easily nature's most spectacular sight. To see the beauty of the Sun's corona in the suddenly darkened sky, you must travel to the path of total solar eclipse.

Durations of total solar eclipse are given inside the path of totality. The gray oval shapes show the Moon's shadow at five minute intervals. Times of greatest eclipse are shown in local time along the purple curves. Degrees of partial eclipse (obscuration) are shown along the orange curves.

Map by Michael Zeiler, GreatAmericanEclipse.com, Dec 2016
Eclipse computations by Xavier Jubier, xjubier.free.fr
Eclipse predictions by Fred Espenak, eclipsewse.com



Eclipse Traffic

Atlanta – Chattanooga

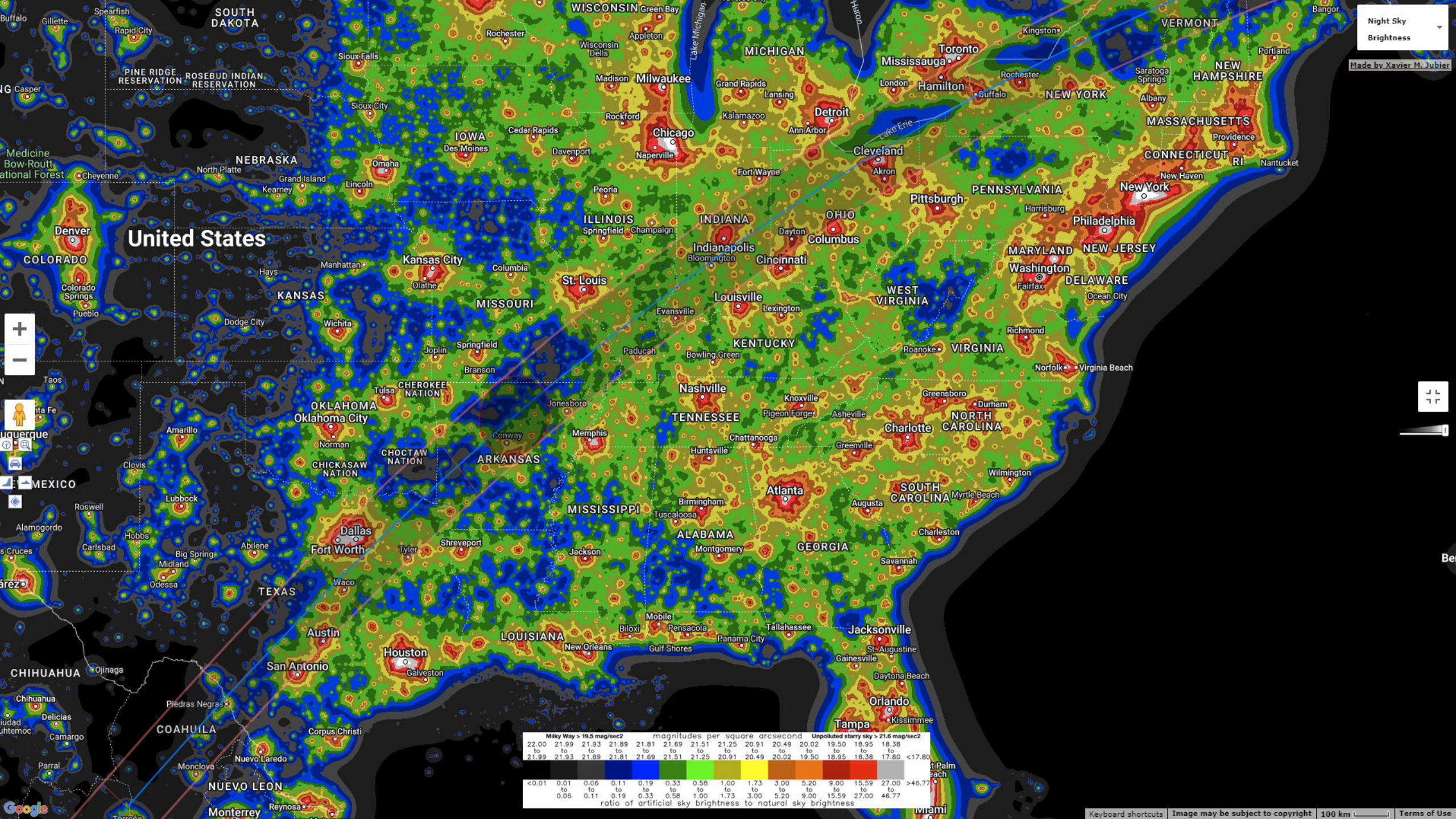
Saturday Afternoon 8/19/2017



How Many Out-of-State Visitors?

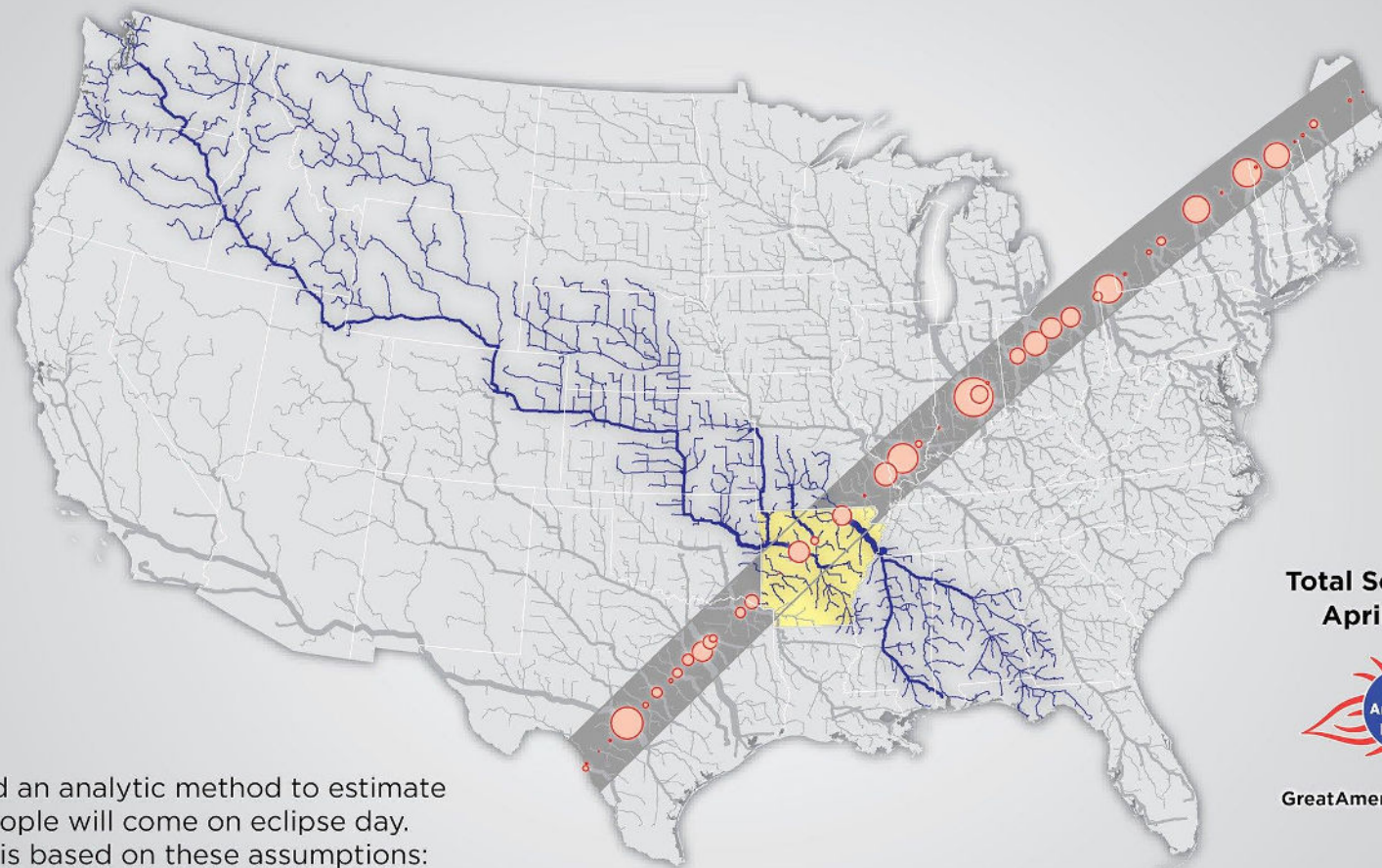


Arkansas Parks and
Tourism Expects 1.5
Million Visitors



How many people will go see the Great American Eclipse in Arkansas?

A total solar eclipse crosses North America on April 8, 2024.
This is easily the most beautiful sight you will see in the sky!
Try to arrive early and stay late to beat heavy traffic.



Total Solar Eclipse
April 8, 2024



GreatAmericanEclipse.com

We've applied an analytic method to estimate how many people will come on eclipse day. The estimate is based on these assumptions:

- People nearby are more likely to drive to the path of total solar eclipse than people far away.
- People will take the shortest drive to the closest destination in the path of totality.

Learn about the details of our model at greatamericaneclipse.com/statistics

Low estimate of eclipse visitors to Arkansas: 70,000
High estimate of eclipse visitors to Arkansas: 281,000
People in Arkansas living inside the path: 1,771,000

Great Places to Watch the Eclipse

Clinton – 4 minutes 15 seconds of totality

Mountain View – 4 minutes 14 seconds of totality

Hardy – 4 minutes and 12 seconds of totality

Cherokee Village – 4 minutes and 12 seconds of totality

Russellville – 4 minutes and 11 seconds of totality

Heber Springs – 4 minutes and 2 seconds of totality

Batesville – 4 minutes and 2 seconds of totality

Mountain Home – 3 minutes and 10 seconds of totality

Searcy – 2 minutes 55 seconds of totality

Jasper - 2 minutes and 4 seconds of totality

Yellville – 2 minutes 47 seconds of totality

Flippin - 2 minutes 49 seconds of totality

DRAFT

2024 SOLAR ECLIPSE

TRAFFIC MANAGEMENT PLAN

OCTOBER 11, 2023 VERSION



Prepared by Garver for the
Arkansas Department of Transportation
In Cooperation with the Federal Highway Administration

This report was funded in part by the Federal Highway Administration,
U.S. Department of Transportation. The views and opinions of the authors expressed herein
do not necessarily state or reflect those of the U.S. Department of Transportation.

ARKANSAS DEPARTMENT OF TRANSPORTATION NOTICE OF NONDISCRIMINATION

Special communication or accommodation needs under the Americans with Disabilities Act (ADA) may contact Ruby Jordan-Johnson at 501-569-2379 or email environmentalmeetings@ardot.gov. The hearing or speech impaired, may contact the Arkansas Relay System at (Voice/TTY 711).

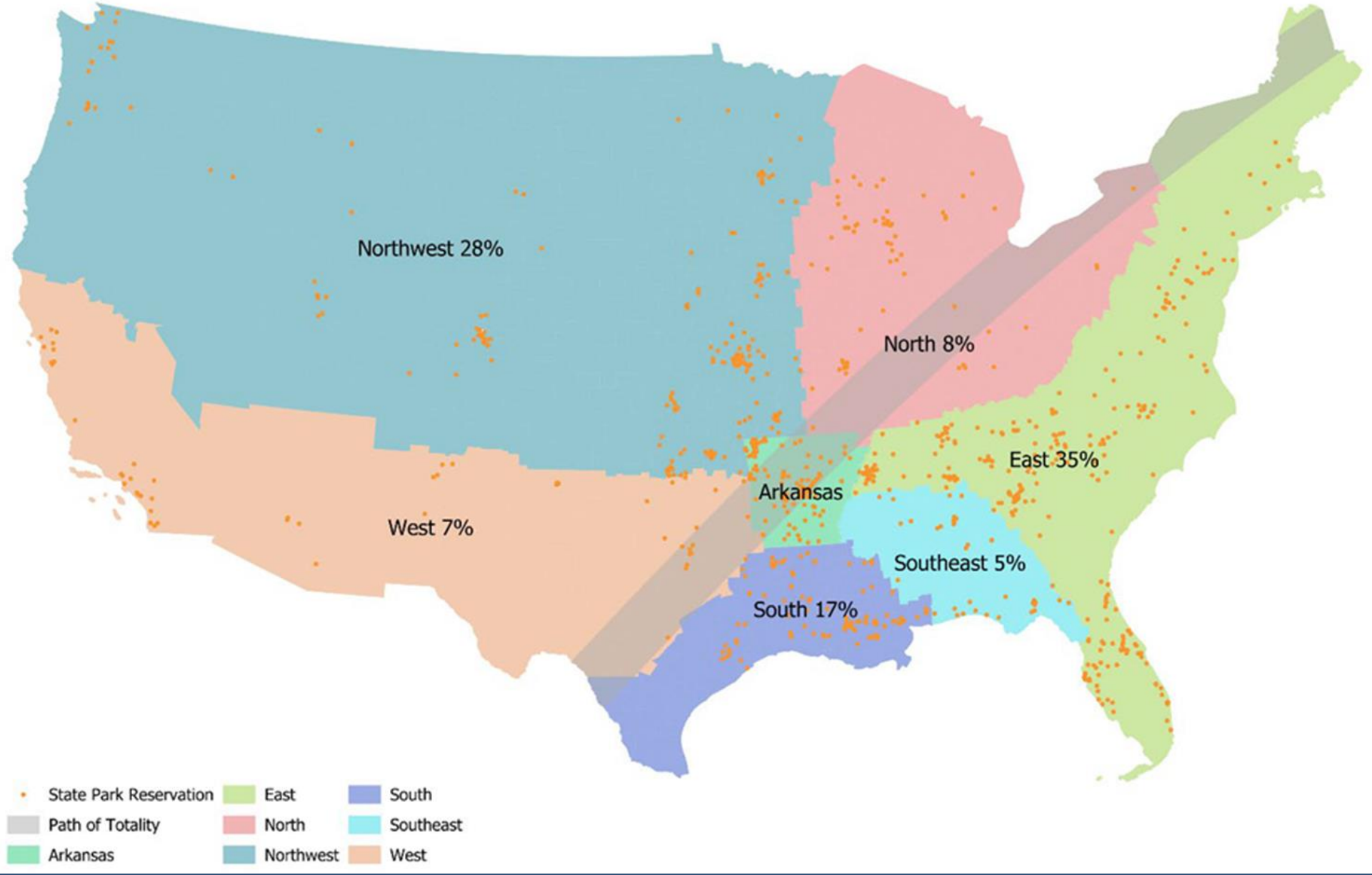
The Arkansas Department of Transportation (ARDOT) complies with all civil rights provisions of federal statutes and related authorities that prohibit discrimination in programs and activities receiving federal financial assistance. Therefore, ARDOT does not discriminate on the basis of race, sex, color, age, national origin, religion (not applicable as a protected group under the Federal Motor Carrier Safety Administration Title VI Program), disability, Limited English Proficiency (LEP), or low-income status in the admission, access to and treatment in ARDOT's programs and activities, as well as ARDOT's hiring or employment practices. Complaints of alleged discrimination and inquiries regarding ARDOT's nondiscrimination policies may be directed to Civil Rights Officer Joanna P. McFadden (ADA/504/Title VI Coordinator), P.O. Box 2261, Little Rock, AR 72203-2261, (501) 569-2298, (Voice/TTY 711), or the following email address: Joanna.McFadden@ardot.gov.

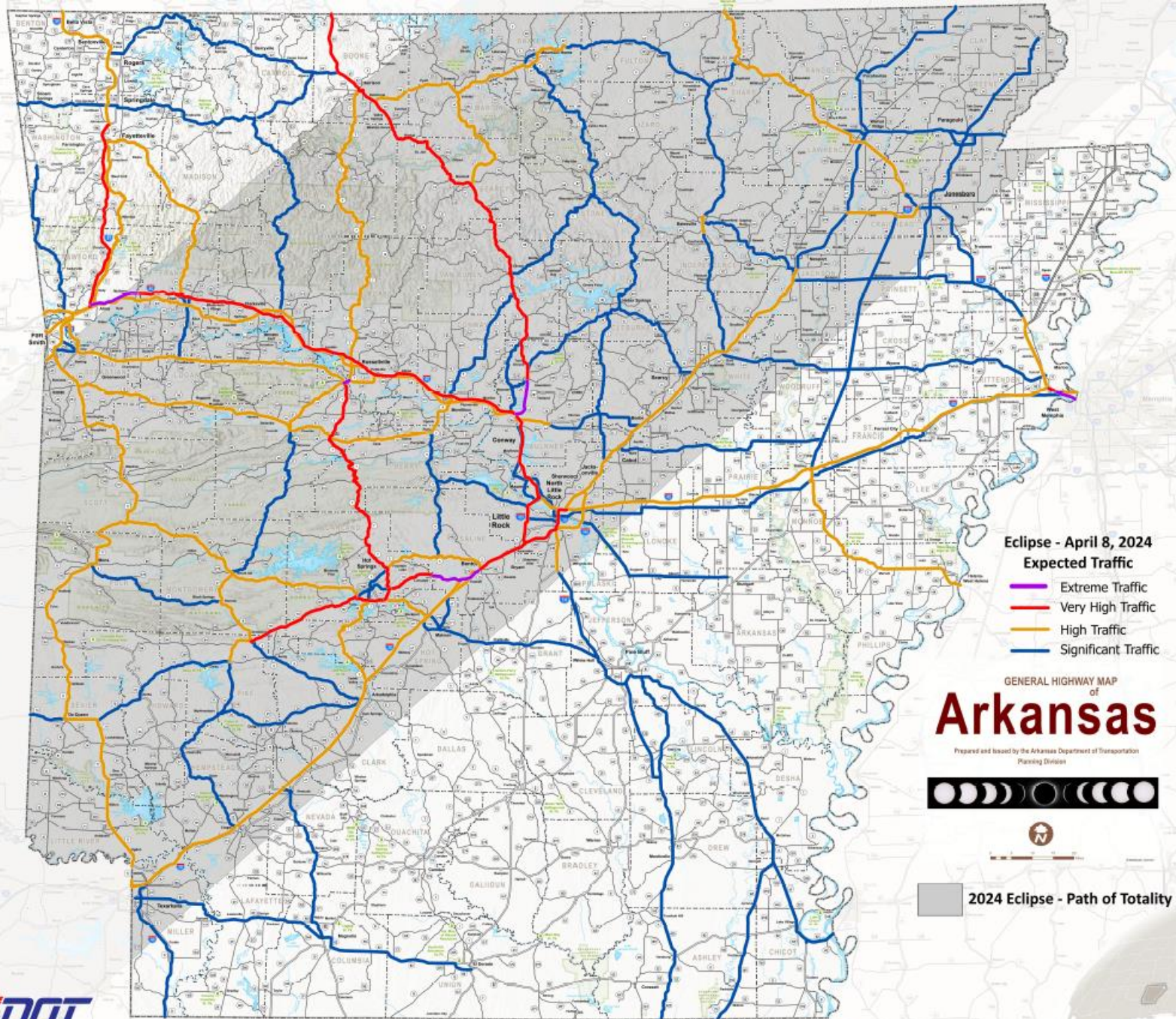
Free language assistance for the Limited English Proficient individuals is available upon request.

This notice is available from the ADA/504/Title VI Coordinator in large print, on audiotape and in Braille.

Preparing for the Eclipse

- Established a Planning Team
- Began Coordinating with Various State & Local Agencies
- Created a Draft Traffic Management Plan (TMP)





Eclipse - April 8, 2024
Expected Traffic

- Extreme Traffic
- Very High Traffic
- High Traffic
- Significant Traffic

GENERAL HIGHWAY MAP
of
Arkansas

Prepared and Issued by the Arkansas Department of Transportation
Planning Division



2024 Eclipse - Path of Totality

Traffic Demand Reduction Strategies

- Stay a While
- Work from Home
- School Closings
- Limit or Prohibit Oversize Loads
- Truck Holiday





Traffic Flow Enhancements

- Reduce Construction Activity
- Review Bottleneck Points
- Coordination with Local Agencies
- Law Enforcement & Emergency Response Positioning
- Mountainous Routes
- Alternate Routes
- Spot Mitigation

Communications Plan

- Traffic Management Center
- Public Awareness Campaign
- Coordination Across State Agencies



Recent Department Activities

ARKANSAS CONCRETE CONFERENCE





MADISON MURPHY

HIGHWAY DEDICATION



ARKANSAS TRANSPORTATION PLANNING CONFERENCE





2023 CONWAY BUSINESS EXPO





HOT SPRINGS BYPASS

RIBBON CUTTING



ENVIRONMENTAL RECORD OF DECISION

FUTURE INTERSTATE 57



04

Construction Manager-General Contractor Selection

Jonesboro | Caraway Rd. – Interstate 555

Construction Manager-General Contractor Selection

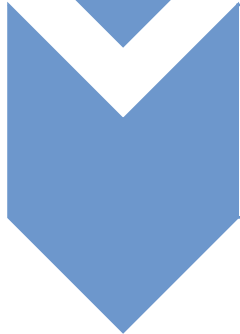
JONESBORO | CARAWAY RD. – INTERSTATE 555



2 Proposals Received



2 Interviews Held



Recommendation to Begin
Negotiations with Atlas Asphalt, Inc.

05

Construction Manager-General Contractor Selection

Conway | Highway 60 – Interstate 40

Construction Manager-General Contractor Selection

CONWAY | HIGHWAY 60 – INTERSTATE 40



1 Proposal Received



1 Interview Held



Recommendation to Begin Negotiations
with Redstone Construction Group, Inc.

06

Consultant Selection

On-Call Construction Engineering &
Inspection Services

Consultant Selection

CONSTRUCTION ENGINEERING & INSPECTION SERVICES



Letters of Interest Received
from 11 Firms



Recommendation to Begin
Negotiations with 6 Firms

- BGE, Inc. of Fayetteville
- Garver, LLC of North Little Rock
- Jacobs Engineering Group, Inc. of Little Rock
- McClelland Consultant Engineering, Inc. of Fayetteville
- Michael Barker International, Inc. of Little Rock
- Volkert Inc. of Little Rock.

07

Consultant Selection

On-Call Planning Services

Consultant Selection

ON-CALL PLANNING SERVICES



9 Proposals Received



Recommendation to Begin
Negotiations with 9 Firms

- AECOM of Little Rock
- Alliance Transportation Group of Austin, Texas
- Burns & McDonnell Engineering Company, Inc. of Springdale
- Cambridge Systematics, Inc. of Medford, Massachusetts
- Garver, LLC of North Little Rock
- HDR Engineering, Inc. of Little Rock
- High Street Consulting Group of Pittsburgh, Pennsylvania
- HNTB Corporation of Little Rock
- Olsson, Inc. of Fayetteville

08

Upcoming Events

UPCOMING

Events

OCTOBER 26

APWA Arkansas Fall Conference

Director Tudor
11:45 AM | Fayetteville

OCTOBER 30

Meeting with Senator Gilmore

Commissioner Haak & Director Tudor
Crossett & Magnolia

OCTOBER 31

Winter Weather Tabletop Exercise

Maintenance Division
9 AM | All 10 Districts

NOVEMBER 1

Bid Letting

NOVEMBER 8

The Future of Van Buren & Interstate 49

Commissioner Gibson & Jared Wiley
8:30 AM | Van Buren

NOVEMBER 10

Veterans Day Holiday

UPCOMING

Events

NOVEMBER 14

**2023 Annual Southeastern Asphalt
User/Producer Group Meeting**

Director Tudor
8 AM | Little Rock

NOVEMBER 14

P.E. Board Meeting

Director Tudor
9 AM | Little Rock

NOVEMBER 15

Good Roads Annual Meeting

Commission & Director Tudor
11 AM | Little Rock

NOVEMBER 15-17

**American Association of Highway and
Transportation Officials Annual Meeting**

Director Tudor
Indianapolis, IN

NOVEMBER 23-24

Thanksgiving Holiday

NOVEMBER 30

District 8 Service Awards

Director Tudor
11 AM | Dardanelle Community Center

UPCOMING

Events

DECEMBER 1

District 9 Service Awards

Director Tudor
11 AM | Harrison District Headquarters

DECEMBER 6

Arkansas Highway Commission Meeting

Commission & Director Tudor
10 AM | Little Rock

DECEMBER 4

Maintenance Division Service Awards

Director Tudor
11 AM | Maintenance Sign Shop

DECEMBER 5

Central Office Service Awards

Director Tudor
10 AM | ARDOT Central Office
Auditorium

2023 DISTRICT SERVICE AWARDS

NOVEMBER 30

District 8

11 AM | Dardanelle Community Center

DECEMBER 1

District 9

11 AM | District Headquarters (Harrison)

DECEMBER 4

Maintenance Division

11 AM | Maintenance Sign Shop

DECEMBER 5

Central Office

10 AM | ARDOT Central Office Auditorium

DECEMBER 7

District 2

TBD | White Hall Community Center

DECEMBER 8

District 3

11 AM | District Headquarters (Hope)

DECEMBER 11

District 1

10:30 AM | East Arkansas Community College (Wynne)

DECEMBER 12

District 5

10 AM | Batesville Community & Aquatic Center

DECEMBER 13

District 4

TBD | District Headquarters (Barling)

DECEMBER 14

District 6

11:30 AM | Bishop Park Center (Bryant)

DECEMBER 15

District 10

TBD | Paragould Community Center

DECEMBER 19

District 7

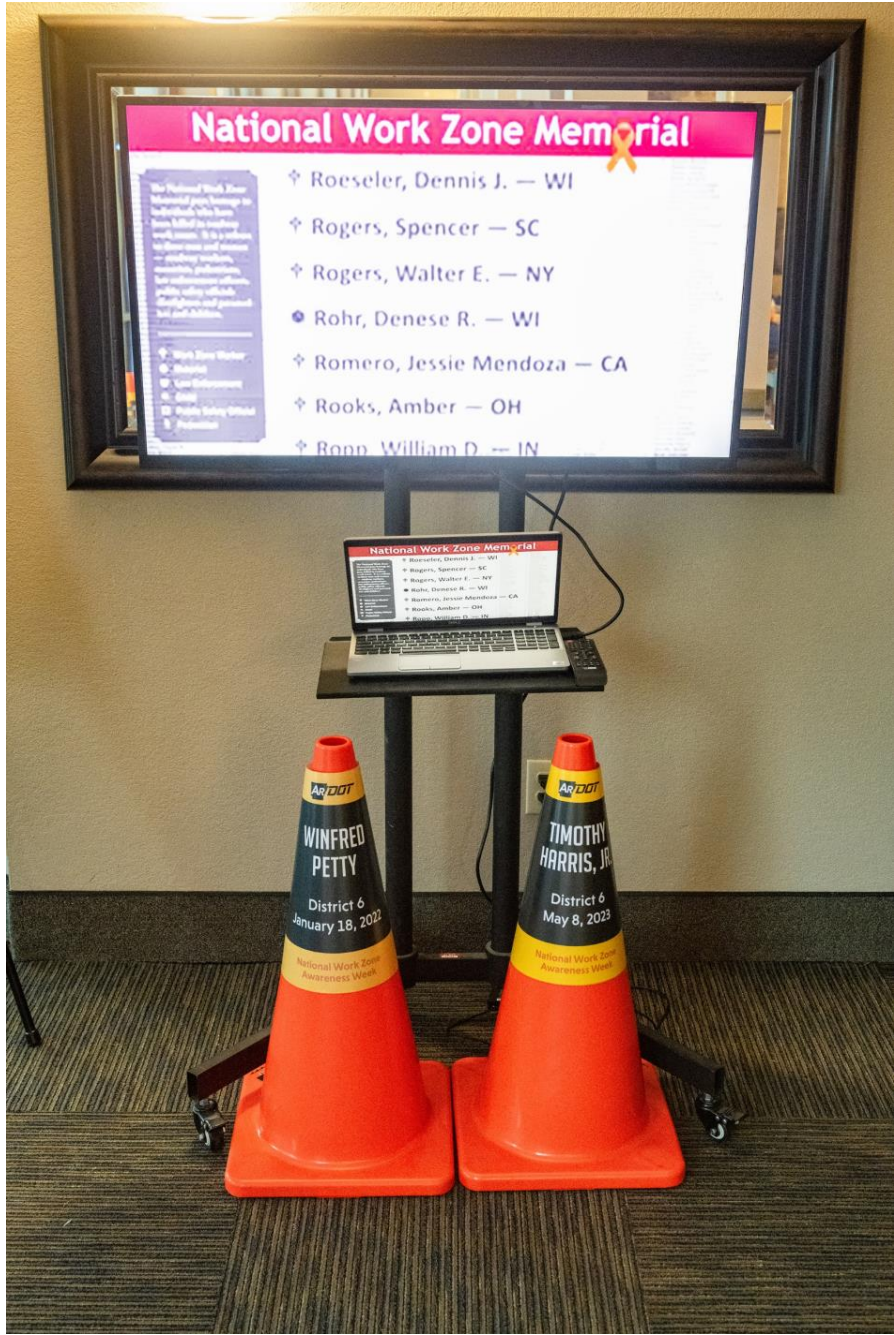
10:30 AM | Calvary Baptist Church (East Camden)

09

Other Business and Discussion

19TH ANNUAL SOUTHEASTERN REGIONAL ROADEO





WORKER MEMORIAL





Arkansas State Highway Commission Meeting

October 25, 2023