

**ADDENDUM NO. 1 – JOB AX0005**

**ARKANSAS DEPARTMENT OF TRANSPORTATION**

PROGRAM MANAGEMENT DIVISION

LITTLE ROCK, ARKANSAS

March 27, 2024

**TO:** Eligible Bidders – Job AX0005

**SUBJECT:** Proposal Documents Changes

Special Provision “Rumble Strips” has been added. Additionally, the pay items in the table below have been added. Also, Rumble Strip Special Details were added on Lettersize Plan Sheets 11A and 11B. The Supplemental Specifications and Special Provisions Listing, Lettersize Plan Sheets 3, 11A, 11B, and 17-18, the Proposal Schedule of Items Pages 1-2, and the EBS file have been revised to reflect these changes. You should substitute the revised sheets into your proposal documents and consider these revisions when submitting your bid.

Line No.	Item Description	Previous Quantity	Revised Quantity	Unit
0030	Rumble Strips in Asphalt Shoulders	0	27,741	LF
0031	Rumble Stripes in Asphalt Shoulders	0	107,196	LF

**ACKNOWLEDGEMENT OF THIS ADDENDUM SHALL BE MADE BY SIGNING BELOW AND SUBMITTING THIS SIGNED FORM TO THE PROGRAM MANAGEMENT DIVISION BY EMAIL AT [pmd@ardot.gov](mailto:pmd@ardot.gov) OR BY FAX AT (501)569-2623.**

Sincerely,

  
for Erica Adams

Division Engineer  
Program Management

\_\_\_\_\_  
Name

\_\_\_\_\_  
Company

EMAILED ADDENDUM

Arkansas Department of Transportation  
Supplemental Specifications and Special Provisions Listing  
State Job Number AX0005

The following supplemental specifications and special provisions for this project supplement the standard specifications, edition of 2014. In case of conflict, the supplemental specifications and special provisions shall govern.

ERRATA	ERRATA FOR THE BOOK OF STANDARD SPECIFICATIONS
FHWA-1273	REQUIRED CONTRACT PROVISIONS FEDERAL-AID CONSTRUCTION CONTRACTS
FHWA-1273	SUPPLEMENT - EQUAL EMPLOYMENT OPPORTUNITY - NOTICE TO CONTRACTORS
FHWA-1273	SUPPLEMENT - SPECIFIC EQUAL EMPLOYMENT OPPORTUNITY RESPONSIBILITIES (23 U.S.C. 140)
FHWA-1273	SUPPLEMENT - EQUAL EMPLOYMENT OPPORTUNITY - GOALS AND TIMETABLES
FHWA-1273	SUPPLEMENT - EQUAL EMPLOYMENT OPPORTUNITY - FEDERAL STANDARDS
FHWA-1273	SUPPLEMENT - POSTERS AND NOTICES REQUIRED FOR FEDERAL-AID PROJECTS
FHWA-1273	SUPPLEMENT - WAGE RATE DETERMINATION
FHWA-1273	SUPPLEMENT - TRAINING PROGRAM - JOB AX0005
JOB SP	CARGO PREFERENCE ACT REQUIREMENTS
JOB SP	GOALS FOR DISADVANTAGED BUSINESS ENTERPRISE PARTICIPATION
JOB SP	DISADVANTAGED BUSINESS ENTERPRISE BIDDER'S RESPONSIBILITIES
JOB SP	PROHIBITION OF CERTAIN TELECOMMUNICATIONS AND VIDEO SURVEILLANCE SERVICES OR EQUIPMENT
JOB SP	BUY AMERICA - CONSTRUCTION MATERIALS
JOB SP	BIDDING REQUIREMENTS AND CONDITIONS
JOB SP	MANDATORY ELECTRONIC CONTRACT
JOB SP	MANDATORY ELECTRONIC DOCUMENT SUBMITTAL
JOB SP	LIQUIDATED DAMAGES PROCEDURE FOR BID LETTINGS
JOB SP	DESIGN AND QUALITY CONTROL OF ASPHALT MIXTURES
JOB SP	PERCENT AIR VOIDS AND NDESIGN FOR ACHM SURFACE MIX DESIGNS
JOB SP	SUBMISSION OF ASPHALT CONCRETE HOT MIX ACCEPTANCE TEST RESULTS
JOB SP	PRICE ADJUSTMENT FOR ASPHALT BINDER
JOB SP	PRICE ADJUSTMENT FOR FUEL
JOB SP	BROADBAND INTERNET SERVICE FOR ASPHALT CONCRETE PLANT
JOB SP	WARM MIX ASPHALT
JOB SP	COLD MILLING - COUNTY PROPERTY
JOB SP	RUMBLE STRIPS
SP 108-1	LIQUIDATED DAMAGES
SS 100-3	CONTRACTOR'S LICENSE
SS 100-4	DEPARTMENT NAME CHANGE
SS 102-2	ISSUANCE OF PROPOSALS
SS 103-2	CONTACT INFORMATION FOR MOTORIST DAMAGE CLAIMS
SS 105-4	MAINTENANCE DURING CONSTRUCTION
SS 107-2	RESTRAINING CONDITIONS
SS 108-2	WORK ALLOWED PRIOR TO ISSUANCE OF WORK ORDER

Arkansas Department of Transportation  
Supplemental Specifications and Special Provisions Listing  
State Job Number AX0005

The following supplemental specifications and special provisions for this project supplement the standard specifications, edition of 2014. In case of conflict, the supplemental specifications and special provisions shall govern.

SS 108-3	WORK ORDER FOR FIXED COMPLETION DATE CONTRACTS
SS 303-1	AGGREGATE BASE COURSE
SS 306-1	QUALITY CONTROL AND ACCEPTANCE
SS 307-1	CEMENT
SS 308-1	CEMENT
SS 400-1	TACK COATS
SS 400-4	DESIGN AND QUALITY CONTROL OF ASPHALT MIXTURES
SS 400-5	PERCENT AIR VOIDS FOR ACHM MIX DESIGNS
SS 400-6	LIQUID ANTI-STRIP ADDITIVE
SS 400-7	TRACKLESS TACK
SS 404-3	DESIGN OF ASPHALT MIXTURES
SS 409-2	ASPHALT LABORATORY FACILITY
SS 410-1	CONSTRUCTION REQUIREMENTS AND ACCEPTANCE OF ASPHALT CONCRETE PLANT MIX COURSES
SS 410-2	DEVICES FOR MEASURING DENSITY FOR ROLLING PATTERNS
SS 410-4	EVALUATION OF ACHM SUBLOT REPLACEMENT MATERIAL
SS 416-1	RECYCLED ASPHALT PAVEMENT
SS 501-2	CEMENT
SS 600-2	INCIDENTAL CONSTRUCTION
SS 603-1	LANE CLOSURE NOTIFICATION
SS 604-1	RETROREFLECTIVE SHEETING FOR TRAFFIC CONTROL DEVICES IN CONSTRUCTION ZONES
SS 604-3	TRAFFIC CONTROL DEVICES IN CONSTRUCTION ZONES (MASH)
SS 617-1	GUARDRAIL TERMINAL (TYPE 2)
SS 617-2	GUARDRAIL DELINEATORS
SS 620-1	MULCH COVER
SS 621-1	FILTER SOCKS
SS 734-1	BRIDGE END TERMINAL
SS 802-4	CEMENT
SS 804-2	REINFORCING STEEL FOR STRUCTURES

## **ARKANSAS DEPARTMENT OF TRANSPORTATION**

### **SPECIAL PROVISION**

**JOB NO. AX0005**

### **RUMBLE STRIPS**

**Section 642 Rumble Strips** of the Standard Specifications for Highway Construction, Edition of 2014, is hereby expanded to include the items Centerline Rumble Stripes in Asphalt Roadways, Rumble Stripes in Asphalt Shoulders, and Rumble Stripes in Portland Cement Concrete Shoulders.

**Subsection 642.01 Description** is hereby deleted and the following substituted therefore:

**642.01 Description.** This item shall consist of constructing rumble strips and rumble stripes on the centerline of asphalt roadways, on asphalt shoulders, and on Portland cement concrete shoulders according to these specifications and conforming to the details shown on the plans.

**For the purpose of this special provision, rumble strips and rumble stripes will all be referred to as rumble strips.**

**Permanent pavement markings are not included in the price bid for rumble strips and shall be installed and paid for per the Standard Specifications.**

**The last sentence of Subsection 642.02 Equipment** is hereby deleted and the following substituted therefore:

The cutting head(s) shall be suspended from the power unit in a manner that will allow the tool to self-align itself with the slope of the roadway or shoulder and/or any irregularities in the pavement surface.

**Subsection 642.03 Construction Requirements** is hereby deleted and the following substituted therefore:

**(a) Rumble Strips and Rumble Stripes in Asphalt Shoulders.** The rumble strips shall be cut in the existing shoulders at the locations shown on the plans or as designated by the Engineer. Prior to commencement of the work, the Contractor shall demonstrate to the Engineer the ability to achieve the desired results without damaging the existing pavement. The Contractor shall remove existing raised pavement markers as the work progresses.

At the end of each working day, all equipment shall be removed from the roadway or parked no closer than 30' (15 m) from the nearest traveled lane. The pavement shall be thoroughly cleaned by sweeping or flushing. All excess material shall be disposed of in a manner approved by the Engineer.

The pavement markings shall be placed in accordance with Section 604.03(f) of the Standard Specifications. If interim or construction pavement markings are needed, edge lines will be required.

## ARKANSAS DEPARTMENT OF TRANSPORTATION

### SPECIAL PROVISION

JOB NO. AX0005

### RUMBLE STRIPS

- (b) Rumble Strips and Rumble Stripes in Portland Cement Concrete Shoulders.** The contractor shall have the option of cutting the rumble strips according to the above requirements or forming the mumble strips in the fresh concrete according to the requirements of Section 506.

The pavement markings shall be placed in accordance with Section 604.03(f) of the Standard Specifications. If interim or construction pavement markings are needed, edge lines will be required.

- (c) Centerline Rumble Stripes in Asphalt Roadways.** The rumble stripes shall be cut on the centerline of existing asphalt roadways at the locations shown on the plans or as designated by the Engineer. Prior to commencement of the work, the Contractor shall demonstrate to the Engineer the ability to achieve the desired results without damaging the existing pavement. The Contractor shall remove existing raised pavement markers as the work progresses.

At the end of each working day, all equipment shall be removed from the roadway or parked no closer than 30' (15 m) from the nearest traveled lane. The pavement shall be thoroughly cleaned by sweeping or flushing. All excess material shall be disposed of in a manner approved by the Engineer.

The pavement markings shall be placed in accordance with Section 604.03(f) of the Standard Specifications. If interim or construction pavement markings are needed, edge lines will be required.

**Subsection 642.04 Method of Measurement** is hereby deleted and the following substituted therefore:

Rumble strips in asphalt or Portland cement concrete shoulders will be measured by the linear foot (meter) longitudinally along the shoulder on which the rumble strips are constructed. No measurement or payment will be made for gaps, driveways, turnouts, or other public road intersections where the rumble strips have not been constructed.

Centerline rumble stripes will be measured by the linear foot (meter) longitudinally along the centerline of the roadway on which the rumble stripes are constructed. No measurement or payment will be made for turnouts or other public road intersections where rumble stripes have not been constructed.

**Subsection 642.05 Basis of Payment** is hereby deleted and the following substituted therefore:

Work completed and accepted and measured as provided above will be paid for at the contract unit price bid per linear foot (meter) for Rumble Strips in Asphalt Shoulders, Rumble Strips in Portland Cement Concrete Shoulders, Rumble Stripes in Asphalt Shoulders, or

**ARKANSAS DEPARTMENT OF TRANSPORTATION**

**SPECIAL PROVISION**

**JOB NO. AX0005**

**RUMBLE STRIPS**

Rumble Stripes in Portland Cement Concrete Shoulders, which price shall be full compensation for constructing the rumble strips; for cleaning the pavement; for disposing of excess material; and for all labor, equipment, tools, and incidentals necessary to complete the work. Permanent pavement markings are not included in the price bid for rumble strips and shall be installed and paid for per the Standard Specifications.

Work completed and accepted and measured as provided above will be paid for at the contract unit price bid per linear foot (meter) for Centerline Rumble Stripes in Asphalt Roadways, which price shall be full compensation for removing the existing raised pavement markers; for constructing the rumble stripes; for cleaning the pavement; for disposing of excess material; and for all labor, equipment, tools, and incidentals necessary to complete the work. Permanent pavement markings are not included in the price bid for rumble stripes and shall be installed and paid for per the Standard Specifications.

The following items are added to the list of pay items:

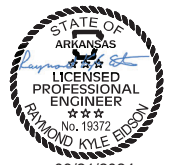
<b>Pay Item</b>	<b>Pay Unit</b>
Centerline Rumble Stripes in Asphalt Roadways	Linear Foot (Meter)
Rumble Stripes in Asphalt Shoulders	Linear Foot (Meter)
Rumble Stripes in Portland Cement Concrete Shoulders	Linear Foot (Meter)

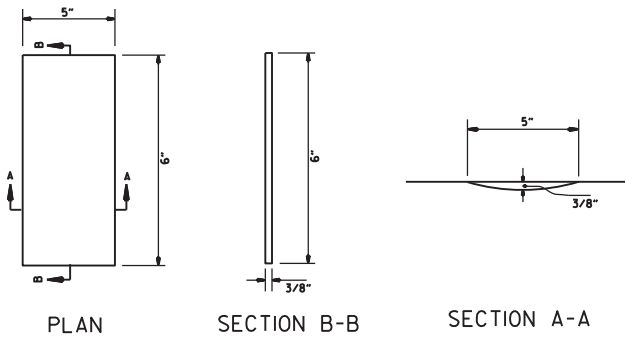
## GOVERNING SPECIFICATIONS

ARKANSAS STATE HIGHWAY COMMISSION STANDARD SPECIFICATIONS FOR HIGHWAY  
CONSTRUCTION, EDITION OF 2014, AND THE FOLLOWING SPECIAL PROVISIONS  
AND SUPPLEMENTAL SPECIFICATIONS:

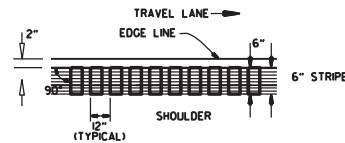
NUMBER	TITLE
ERRATA	ERRATA FOR THE BOOK OF STANDARD SPECIFICATIONS
FHWA-1273	REQUIRED CONTRACT PROVISIONS FEDERAL-AID CONSTRUCTION CONTRACTS
FHWA-1273	SUPPLEMENT - EQUAL EMPLOYMENT OPPORTUNITY - NOTICE TO CONTRACTORS
FHWA-1273	SUPPLEMENT - SPECIFIC EQUAL EMPLOYMENT OPPORTUNITY RESPONSIBILITIES (23 U.S.C. 140)
FHWA-1273	SUPPLEMENT - EQUAL EMPLOYMENT OPPORTUNITY - GOALS AND TIMETABLES
FHWA-1273	SUPPLEMENT - EQUAL EMPLOYMENT OPPORTUNITY - FEDERAL STANDARDS
FHWA-1273	SUPPLEMENT - TRAINING PROGRAM - JOB AX0005
FHWA-1273	SUPPLEMENT - POSTERS AND NOTICES REQUIRED FOR FEDERAL-AID PROJECTS
FHWA-1273	SUPPLEMENT - WAGE RATE DETERMINATION
100-3	CONTRACTOR'S LICENSE
100-4	DEPARTMENT NAME CHANGE
102-2	ISSUANCE OF PROPOSALS
103-2	CONTACT INFORMATION FOR MOTORIST DAMAGE CLAIMS
105-4	MAINTENANCE DURING CONSTRUCTION
107-2	RESTRAINING CONDITIONS
108-1	LIQUIDATED DAMAGES
108-2	WORK ALLOWED PRIOR TO ISSUANCE OF WORK ORDER
108-3	WORK ORDER FOR FIXED COMPLETION DATE CONTRACTS
303-1	AGGREGATE BASE COURSE
306-1	QUALITY CONTROL AND ACCEPTANCE
307-1	CEMENT
308-1	CEMENT
400-1	TACK COATS
400-4	DESIGN AND QUALITY CONTROL OF ASPHALT MIXTURES
400-5	PERCENT AIR VOIDS FOR ACHM MIX DESIGNS
400-6	LIQUID ANTI-STRIP ADDITIVE
400-7	TRACKLESS TACK
404-3	DESIGN OF ASPHALT MIXTURES
409-2	ASPHALT LABORATORY FACILITY
410-1	CONSTRUCTION REQUIREMENTS AND ACCEPTANCE OF ASPHALT CONCRETE PLANT MIX COURSES
410-2	DEVICES FOR MEASURING DENSITY FOR ROLLING PATTERNS
410-4	EVALUATION OF ACHM SUBLOT REPLACEMENT MATERIAL
416-1	RECYCLED ASPHALT PAVEMENT
501-2	CEMENT
600-2	INCIDENTAL CONSTRUCTION
603-1	LANE CLOSURE NOTIFICATION
604-1	RETROREFLECTIVE SHEETING FOR TRAFFIC CONTROL DEVICES IN CONSTRUCTION ZONES
604-3	TRAFFIC CONTROL DEVICES IN CONSTRUCTION ZONES (MASH)
617-1	GUARDRAIL TERMINAL (TYPE 2)
617-2	GUARDRAIL DELINEATORS
620-1	MULCH COVER
621-1	FILTER SOCKS

734-1	BRIDGE END TERMINAL
802-4	CEMENT
804-2	REINFORCING STEEL FOR STRUCTURES
JOB AX0005	BIDDING REQUIREMENTS AND CONDITIONS
JOB AX0005	BROADBAND INTERNET SERVICE FOR ASPHALT CONCRETE PLANT
JOB AX0005	BUY AMERICA - CONSTRUCTION MATERIALS
JOB AX0005	CARGO PREFERENCE ACT REQUIREMENTS
JOB AX0005	COLD MILLING - COUNTY PROPERTY
JOB AX0005	DESIGN AND QUALITY CONTROL OF ASPHALT MIXTURES
JOB AX0005	DISADVANTAGED BUSINESS ENTERPRISE BIDDER'S RESPONSIBILITIES
JOB AX0005	GOALS FOR DISADVANTAGED BUSINESS ENTERPRISE PARTICIPATION
JOB AX0005	LIQUIDATED DAMAGES PROCEDURE FOR BID LETTINGS
JOB AX0005	MANDATORY ELECTRONIC CONTRACT
JOB AX0005	MANDATORY ELECTRONIC DOCUMENT SUBMITTAL
JOB AX0005	PERCENT AIR VOIDS AND NDESIGN FOR ACHM SURFACE MIX DESIGNS
JOB AX0005	PRICE ADJUSTMENT FOR ASPHALT BINDER
JOB AX0005	PRICE ADJUSTMENT FOR FUEL
JOB AX0005	PROHIBITION OF CERTAIN TELECOMMUNICATIONS AND VIDEO SURVEILLANCE SERVICES OR EQUIPMENT
JOB 012363	RUMBLE STRIPS
JOB AX0005	SUBMISSION OF ASPHALT CONCRETE HOT MIX ACCEPTANCE TEST RESULTS
JOB AX0005	WARM MIX ASPHALT

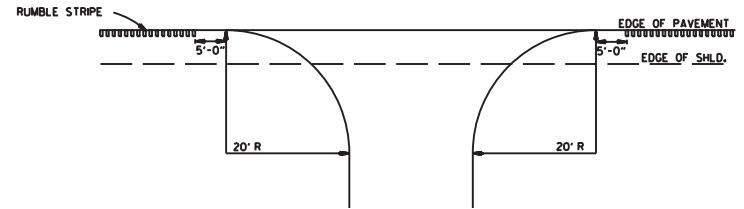




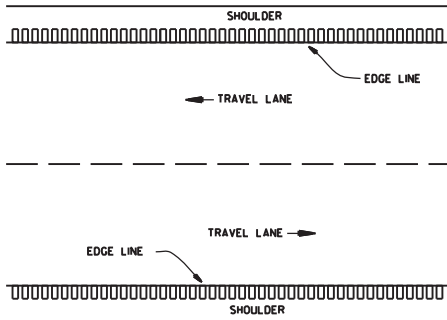
DETAILS OF RUMBLE STRIPE



LOCATION PLAN OF RUMBLE STRIPE  
LEFT OR RIGHT SHOULDER



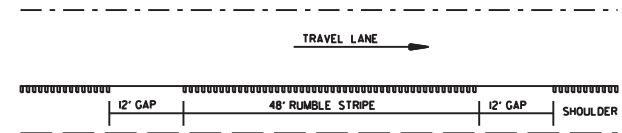
DETAIL FOR RUMBLE STRIPE GAP  
AT DRIVEWAY TURNOUTS



PLAN VIEW

GENERAL NOTES:

1. RUMBLE STRIPES SHALL NOT BE INSTALLED ON BRIDGE DECKS, APPROACH SLABS, INTERSECTING STREETS OR ROADWAYS, RESIDENTIAL OR COMMERCIAL DRIVEWAYS OR ACROSS TRANSVERSE JOINTS OF CONCRETE SHOULDERS.
2. RUMBLE STRIPES SHALL NOT BE INSTALLED ON A PAVED SHOULDER THAT IS USED AS A DECELERATION LANE FOR THE LENGTH DEEMED APPROPRIATE BY THE ENGINEER.
3. RUMBLE STRIPES SHALL BE MEASURED BY THE LINEAR FOOT LONGITUDINALLY ALONG THE SHOULDER. PAYMENT SHALL ONLY INCLUDE THAT PORTION OF THE SHOULDER ON WHICH RUMBLE STRIPES HAVE BEEN CONSTRUCTED. NO MEASUREMENT OR PAYMENT WILL BE MADE FOR GAPS, DRIVEWAYS, TURNOUTS, OR OTHER PUBLIC ROAD INTERSECTIONS WHERE RUMBLE STRIPES HAVE NOT BEEN CONSTRUCTED.
4. THE 3/8" DEPTH SHALL GENERALLY APPLY FOR THE ENTIRE 6" LENGTH. SOME VARIATION TO SUIT SHOULDER SLOPE BREAKS MAY BE NECESSARY.



NOTE: GAP PATTERN SHALL BE ADJUSTED BY THE ENGINEER IN THE FIELD ALLOWING FOR DRIVEWAYS TO SERVE AS THE GAP.

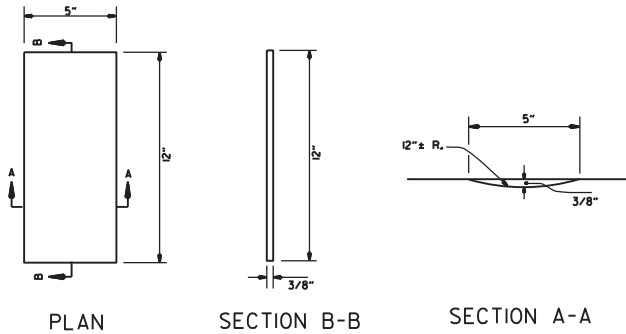
DETAIL FOR GAP PATTERN RUMBLE STRIPE

NOT TO SCALE

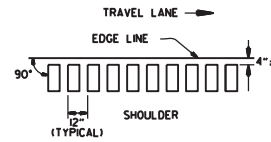
JOB NO. AX0005



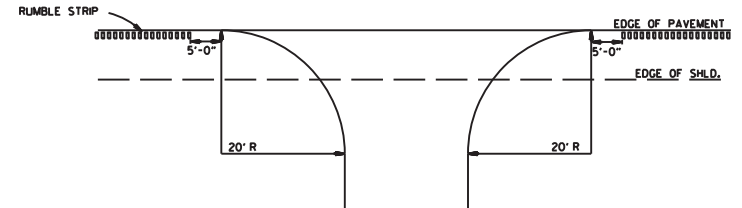
REVISED 03-21-24  
SHEET IIA OF 18  
SPECIAL DETAILS



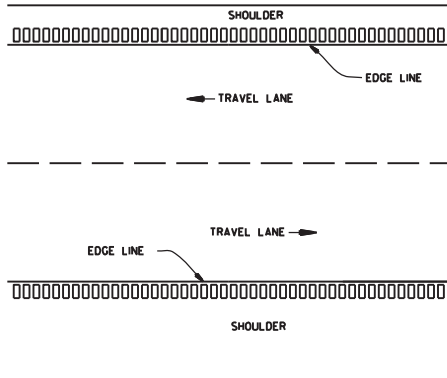
DETAILS OF RUMBLE STRIPS



LOCATION PLAN OF RUMBLE STRIPS  
LEFT OR RIGHT SHOULDER



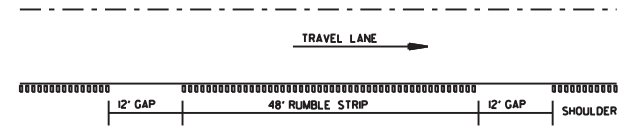
DETAIL FOR RUMBLE STRIP GAP  
AT DRIVEWAY TURNOUTS



PLAN VIEW

GENERAL NOTES:

1. RUMBLE STRIPS SHALL NOT BE INSTALLED ON CURB SECTIONS, BRIDGE DECKS, APPROACH SLABS, INTERSECTING STREETS OR ROADWAYS, RESIDENTIAL OR COMMERCIAL DRIVEWAYS OR ACROSS TRANSVERSE JOINTS OF CONCRETE SHOULDERS.
2. RUMBLE STRIPS SHALL NOT BE INSTALLED ON A PAVED SHOULDER THAT IS USED AS A DECELERATION LANE FOR THE LENGTH DEEMED APPROPRIATE BY THE ENGINEER.
3. THE 4" OFFSET FROM THE EDGE LINE MAY BE INCREASED TO AVOID LONGITUDINAL JOINTS. IN ALL CASES, THE LATERAL DEVIATION FROM THE PLANNED OFFSET SHOULD BE KEPT TO A MINIMUM.
4. RUMBLE STRIPS SHALL BE MEASURED BY THE LINEAR FOOT LONGITUDINALLY ALONG THE SHOULDER. PAYMENT SHALL ONLY INCLUDE THAT PORTION OF THE SHOULDER ON WHICH RUMBLE STRIPS HAVE BEEN CONSTRUCTED. NO MEASUREMENT OR PAYMENT WILL BE MADE FOR GAPS, DRIVEWAYS, TURNOUTS, OR OTHER PUBLIC ROAD INTERSECTIONS WHERE RUMBLE STRIPS HAVE NOT BEEN CONSTRUCTED.
5. THE 3/8" DEPTH SHALL GENERALLY APPLY FOR THE ENTIRE 12" LENGTH. SOME VARIATION TO SUIT SHOULDER SLOPE BREAKS MAY BE NECESSARY.



NOTE: GAP PATTERN SHALL BE ADJUSTED BY THE ENGINEER IN THE FIELD ALLOWING FOR DRIVEWAYS TO SERVE AS THE GAP.

DETAIL FOR GAP PATTERN RUMBLE STRIP

NOT TO SCALE

JOB NO. AX0005



REVISED 03-21-24  
SHEET IIB OF 18  
SPECIAL DETAILS

**BASE AND SURFACING (BOX 2 OF 2)**

LOG MILE	LOG MILE	LOCATION	LENGTH	AGGREGATE BASE COURSE (CLASS 7)		TACK COAT				ACHM BINDER COURSE (1")				ACHM SURFACE COURSE (1/2")			
				TON / STATION	TON	AVG. WID.	SQ.YD.	GALLONS / SQ.YD.	GALLON	AVG. WID.	SQ.YD.	POUND / SQ.YD.	PG 64-22	AVG. WID.	SQ.YD.	POUND / SQ.YD.	PG 64-22
			FEET			FEET			FEET			TON	FEET			TON	
ADDITIONAL FOR WIDENING FOR GUARDRAILS																	
15.834	15.875	HWY. 35 - MAINLANE RT.	216.48	3.00	6.49									5.00	120.27	220.00	13.23
15.848	15.875	HWY. 35 - MAINLANE LT.	142.56	3.00	4.28									5.00	79.20	220.00	8.71
15.887	15.914	HWY. 35 - MAINLANE RT.	142.56	3.00	4.28									5.00	79.20	220.00	8.71
0.958	0.999	HWY. 35 - MAINLANE RT.	216.48	3.00	6.49									5.00	120.27	220.00	13.23
0.972	0.999	HWY. 35 - MAINLANE LT.	142.56	3.00	4.28									5.00	79.20	220.00	8.71
1.019	1.046	HWY. 35 - MAINLANE RT.	142.56	3.00	4.28									5.00	79.20	220.00	8.71
1.019	1.060	HWY. 35 - MAINLANE LT.	216.48	3.00	6.49									5.00	120.27	220.00	13.23
1.221	1.262	HWY. 35 - MAINLANE RT.	216.48	3.00	6.49									5.00	120.27	220.00	13.23
1.235	1.262	HWY. 35 - MAINLANE LT.	142.56	3.00	4.28									5.00	79.20	220.00	8.71
1.295	1.322	HWY. 35 - MAINLANE RT.	142.56	3.00	4.28									5.00	79.20	220.00	8.71
1.295	1.336	HWY. 35 - MAINLANE LT.	216.48	3.00	6.49									5.00	120.27	220.00	13.23
1.448	1.489	HWY. 35 - MAINLANE RT.	216.48	3.00	6.49									5.00	120.27	220.00	13.23
1.462	1.489	HWY. 35 - MAINLANE LT.	142.56	3.00	4.28									5.00	79.20	220.00	8.71
1.503	1.530	HWY. 35 - MAINLANE RT.	142.56	3.00	4.28									5.00	79.20	220.00	8.71
1.503	1.544	HWY. 35 - MAINLANE LT.	216.48	3.00	6.49									5.00	120.27	220.00	13.23
4.093	4.134	HWY. 35 - MAINLANE RT.	216.48	3.00	6.49									5.00	120.27	220.00	13.23
4.107	4.134	HWY. 35 - MAINLANE LT.	142.56	3.00	4.28									5.00	79.20	220.00	8.71
4.157	4.184	HWY. 35 - MAINLANE RT.	142.56	3.00	4.28									5.00	79.20	220.00	8.71
4.157	4.198	HWY. 35 - MAINLANE LT.	216.48	3.00	6.49									5.00	120.27	220.00	13.23
4.255	4.296	HWY. 35 - MAINLANE RT.	216.48	3.00	6.49									5.00	120.27	220.00	13.23
4.269	4.296	HWY. 35 - MAINLANE LT.	142.56	3.00	4.28									5.00	79.20	220.00	8.71
4.310	4.337	HWY. 35 - MAINLANE RT.	142.56	3.00	4.28									5.00	79.20	220.00	8.71
4.310	4.351	HWY. 35 - MAINLANE LT.	216.48	3.00	6.49									5.00	120.27	220.00	13.23
6.669	6.710	HWY. 35 - MAINLANE RT.	216.48	3.00	6.49									5.00	120.27	220.00	13.23
6.683	6.710	HWY. 35 - MAINLANE LT.	142.56	3.00	4.28									5.00	79.20	220.00	8.71
6.737	6.764	HWY. 35 - MAINLANE RT.	142.56	3.00	4.28									5.00	79.20	220.00	8.71
6.737	6.778	HWY. 35 - MAINLANE LT.	216.48	3.00	6.49									5.00	120.27	220.00	13.23
SUBTOTALS (BOX 1 OF 2)					3538.50		374567.37		55257.53		12409.20	2730.02		835269.99		63766.02	
SUBTOTALS (BOX 2 OF 2)					144.29									2672.31		293.93	
TOTALS:					3682.79		374567.37		55257.53		12409.20	2730.02		837942.30		64059.95	

BASIS OF ESTIMATE:

ACHM SURFACE COURSE (1/2").....94.3% MIN. AGGR.....5.7% ASPHALT BINDER

ACHM BINDER COURSE (1").....95.7% MIN. AGGR.....4.3% ASPHALT BINDER

TACK COAT QUANTITIES WERE CALCULATED USING THE EMULSIFIED ASPHALT RATES. REFER TO SS-400-1 FOR THE RESIDUAL ASPHALT APPLICATION RATES.

**RUMBLE STRIPS**

LOG MILE	LOG MILE	LOCATION	* RUMBLE STRIPS IN ASPHALT SHOULDERS	* RUMBLE STRIPES IN ASPHALT SHOULDERS
			LIN.FT.	LIN.FT.
12.383	17.000	HWY. 35 - MAINLANES		36180
0.410	1.560	HWY. 35 - MAINLANES		9379
0.000	4.413	HWY. 35 - MAINLANES		36040
6.086	7.002	HWY. 35 - MAINLANES		7588
7.932	10.291	HWY. 35 - MAINLANES		18009
4.413	6.086	HWY. 35 - MAINLANES	13660	
7.002	7.932	HWY. 35 - MAINLANES	7521	
10.291	11.130	HWY. 35 - MAINLANES	6560	
<b>TOTAL:</b>			<b>27741</b>	<b>107196</b>

\* QUANTITY ESTIMATED.

SEE SECTION 104.03 OF THE STD. SPECS.

TO BE USED IF AND WHERE DIRECTED BY THE ENGINEER.



REVISED: 03-21-24  
SHEET 17 OF 18  
QUANTITIES

JOB NO. AX0005

### SUMMARY OF QUANTITIES

ITEM NUMBER	ITEM	QUANTITY	UNIT
202	REMOVAL AND DISPOSAL OF APPROACH GUTTERS	24	EACH
202	REMOVAL AND DISPOSAL OF GUARDRAIL	3420	LIN. FT.
SP & 215	TRENCHING AND SHOULDER PREPARATION	258	STATION
SP, SS, & 303	AGGREGATE BASE COURSE (CLASS 7)	3683	TON
SS & 401	TACK COAT	57258	GAL.
SP, SS, & 406	MINERAL AGGREGATE IN ACHM BINDER COURSE (1")	2613	TON
SP, SS, & 406	ASPHALT BINDER (PG 64-22) IN ACHM BINDER COURSE (1")	117	TON
SP, SS, & 407	MINERAL AGGREGATE IN ACHM SURFACE COURSE (1/2")	61634	TON
SP, SS, & 407	ASPHALT BINDER (PG 64-22) IN ACHM SURFACE COURSE (1/2")	3726	TON
SP & 412	COLD MILLING ASPHALT PAVEMENT	6985	SQ. YD.
SP, SS, & 415	ACHM PATCHING OF EXISTING ROADWAY	400	TON
SP, SS, & 504	APPROACH GUTTERS	247.95	CU. YD.
601	MOBILIZATION	1.00	LUMP SUM
SS & 603	MAINTENANCE OF TRAFFIC	1.00	LUMP SUM
SS & 604	SIGNS	1304	SQ. FT.
604	CONSTRUCTION PAVEMENT MARKINGS	383213	LIN. FT.
604	CONSTRUCTION PAVEMENT MARKINGS (ARROWS)	1	EACH
SS & 617	GUARDRAIL (TYPE A)	2950	LIN. FT.
SS & 617	GUARDRAIL TERMINAL (TYPE 2)	27	EACH
SS & 617	THREE BEAM GUARDRAIL TERMINAL	27	EACH
620	LIME	2	TON
620	SEEDING	0.98	ACRE
SS & 620	MULCH COVER	1.96	ACRE
620	WATER	120.0	M. GAL.
621	TEMPORARY SEEDING	0.98	ACRE
621	SILT FENCE	17000	LIN. FT.
621	SEDIMENT REMOVAL AND DISPOSAL	163	CU. YD.
SS & 621	FILTER SOCK (18")	850	LIN. FT.
621	WATTLE (20")	850	LIN. FT.
642	RUMBLE STRIPS IN ASPHALT SHOULDERS	27741	LIN. FT.
SP & 642	RUMBLE STRIPES IN ASPHALT SHOULDERS	107196	LIN. FT.
718	REFLECTORIZED PAINT PAVEMENT MARKING WHITE (6")	197493	LIN. FT.
718	REFLECTORIZED PAINT PAVEMENT MARKING YELLOW (6")	185720	LIN. FT.
718	REFLECTORIZED PAINT PAVEMENT MARKING YELLOW (8")	84	LIN. FT.
718	REFLECTORIZED PAINT PAVEMENT MARKING YELLOW (12")	48	LIN. FT.
718	REFLECTORIZED PAINT PAVEMENT MARKING (ARROWS)	1	EACH
721	RAISED PAVEMENT MARKERS (TYPE II)	1865	EACH
SS & 734	BRIDGE END TERMINAL	1	EACH
SS & 804	REINFORCING STEEL-ROADWAY (GRADE 60)	25101	POUND

### REVISIONS

DATE	REVISION	SHEET NUMBER
3/21/2024	ADDED RUMBLE STRIPS SPECIAL PROVISION, ADDED RUMBLE STRIPS AND RUMBLE STRIPES DETAILS, ADDED RUMBLE STRIPS AND RUMBLE STRIPES TO QUANTITIES AND SUMMARY OF QUANTITIES.	3, 11A, 11B, 17, 18



REVISED: 03-21-24  
SHEET 18 OF 18

JOB NO. AX0005

SUMMARY OF QUANTITIES AND REVISIONS

Arkansas Department of Transportation  
Schedule of Items

State Job No.: AX0005

Job Name: BIG CREEK – HWY. 425 (SEL. SECS.) (S)

Federal Aid Project: STPR-1323(3)

Date Estimated: 2/7/2024

Date Revised: 3/21/2024

Line Number	Item Code and Description	Estimated Quantity	Unit Bid Price	Price Extension
Section 01 - PROPOSAL ITEMS				
0001	202 - REMOVAL AND DISPOSAL OF APPROACH GUTTERS	24.000 EACH		
0002	202 - REMOVAL AND DISPOSAL OF GUARDRAIL	3,420.000 LF		
0003	SP&215 - TRENCHING AND SHOULDER PREPARATION	258.000 STA		
0004	SPSS303 - AGGREGATE BASE COURSE (CLASS 7)	3,683.000 TON		
0005	SS&401 - TACK COAT	57,258.000 GAL		
0006	SPSS406 - MINERAL AGGREGATE IN ACHM BINDER COURSE (1")	2,613.000 TON		
0007	SPSS406 - ASPHALT BINDER (PG 64-22) IN ACHM BINDER COURSE (1") (MINIMUM BID \$120.00)	117.000 TON		
0008	SPSS407 - MINERAL AGGREGATE IN ACHM SURFACE COURSE (1/2")	61,634.000 TON		
0009	SPSS407 - ASPHALT BINDER (PG 64-22) IN ACHM SURFACE COURSE (1/2") (MINIMUM BID \$120.00)	3,726.000 TON		
0010	SP&412 - COLD MILLING ASPHALT PAVEMENT	6,985.000 SQYD		
0011	SPSS415 - ACHM PATCHING OF EXISTING ROADWAY	400.000 TON		
0012	SPSS504 - APPROACH GUTTERS	247.950 CUYD		
0014	SS&603 - MAINTENANCE OF TRAFFIC	1.000 L.S.		
0015	SS&604 - SIGNS	1,304.000 SQFT		
0016	604 - CONSTRUCTION PAVEMENT MARKINGS	383,213.000 LF		
0017	604 - CONSTRUCTION PAVEMENT MARKINGS (ARROWS)	1.000 EACH		
0018	SS&617 - GUARDRAIL (TYPE A)	2,950.000 LF		
0019	SS&617 - GUARDRAIL TERMINAL (TYPE 2)	27.000 EACH		
0020	SS&617 - THRIE BEAM GUARDRAIL TERMINAL	27.000 EACH		
0021	620 - LIME	2.000 TON		
0022	620 - SEEDING	0.980 ACRE		
0023	SS&620 - MULCH COVER	1.960 ACRE		
0024	620 - WATER	120.000 MGAL		

Arkansas Department of Transportation  
Schedule of Items

State Job No.: AX0005

Job Name: BIG CREEK – HWY. 425 (SEL. SECS.) (S)

Federal Aid Project: STPR-1323(3)

Date Estimated: 2/7/2024

Date Revised: 3/21/2024

Line Number	Item Code and Description	Estimated Quantity	Unit Bid Price	Price Extension
0025	621 - TEMPORARY SEEDING	0.980 ACRE		
0026	621 - SILT FENCE	17,000.000 LF		
0027	621 - SEDIMENT REMOVAL AND DISPOSAL	163.000 CUYD		
0028	SS&621 - FILTER SOCK (18")	850.000 LF		
0029	621 - WATTLE (20")	850.000 LF		
0030	642 - RUMBLE STRIPS IN ASPHALT SHOULDERS	27,741.000 LF		
0031	SP&642 - RUMBLE STRIPES IN ASPHALT SHOULDERS	107,196.000 LF		
0032	718 - REFLECTORIZED PAINT PAVEMENT MARKING WHITE (6")	197,493.000 LF		
0033	718 - REFLECTORIZED PAINT PAVEMENT MARKING YELLOW (6")	185,720.000 LF		
0034	718 - REFLECTORIZED PAINT PAVEMENT MARKING YELLOW (8")	84.000 LF		
0035	718 - REFLECTORIZED PAINT PAVEMENT MARKING YELLOW (12")	48.000 LF		
0036	718 - REFLECTORIZED PAINT PAVEMENT MARKING (ARROWS)	1.000 EACH		
0037	721 - RAISED PAVEMENT MARKERS (TYPE II)	1,865.000 EACH		
0038	SS&734 - BRIDGE END TERMINAL	1.000 EACH		
0039	SS&804 - REINFORCING STEEL-ROADWAY (GRADE 60)	25,101.000 LB		
			Section 01 Total:	
			Subtotal:	
0013	601 - MOBILIZATION (UNIT BID AMOUNT MAY NOT EXCEED 5% OF SUBTOTAL)	1.000 L.S.		
			Bid Total:	