

# Boone County Leadership Institute

Stacy Burge, P.E.  
District 9 Construction Engineer







*Issue 1*

*1/2 ¢ Sales Tax Vote*

*November 2020*

## 10-Year *Renew Arkansas Highways* Program

Pavement Preservation	\$3.0 Billion
Bridge Improvements and Preservation	\$1.1 Billion
Interstate Maintenance	\$1.0 Billion
Safety Improvements	\$0.5 Billion
Capital and Congestion Relief (CAP-2)	\$1.8 Billion
<b>Total</b>	<b>\$7.4 Billion</b>



# 10-Year *Renew Arkansas Highways* Program

Pavement Preservation \$3.0 Billion

Bridge Improvements and Preservation \$1.1 Billion

Interstate Maintenance \$1.0 Billion

Safety Improvements \$0.5 Billion

Capital and Congestion Relief (CAP-2) \$1.8 Billion

**Total** \$7.4 Billion





## Potential Projects

- Second Connecting Arkansas Program \$ 3.0 Billion
- Economic Development, Partnering & Local Congestion Relief \$ 0.5 Billion
- ROW Acquisition & Utility Relocation \$ 0.1 Billion

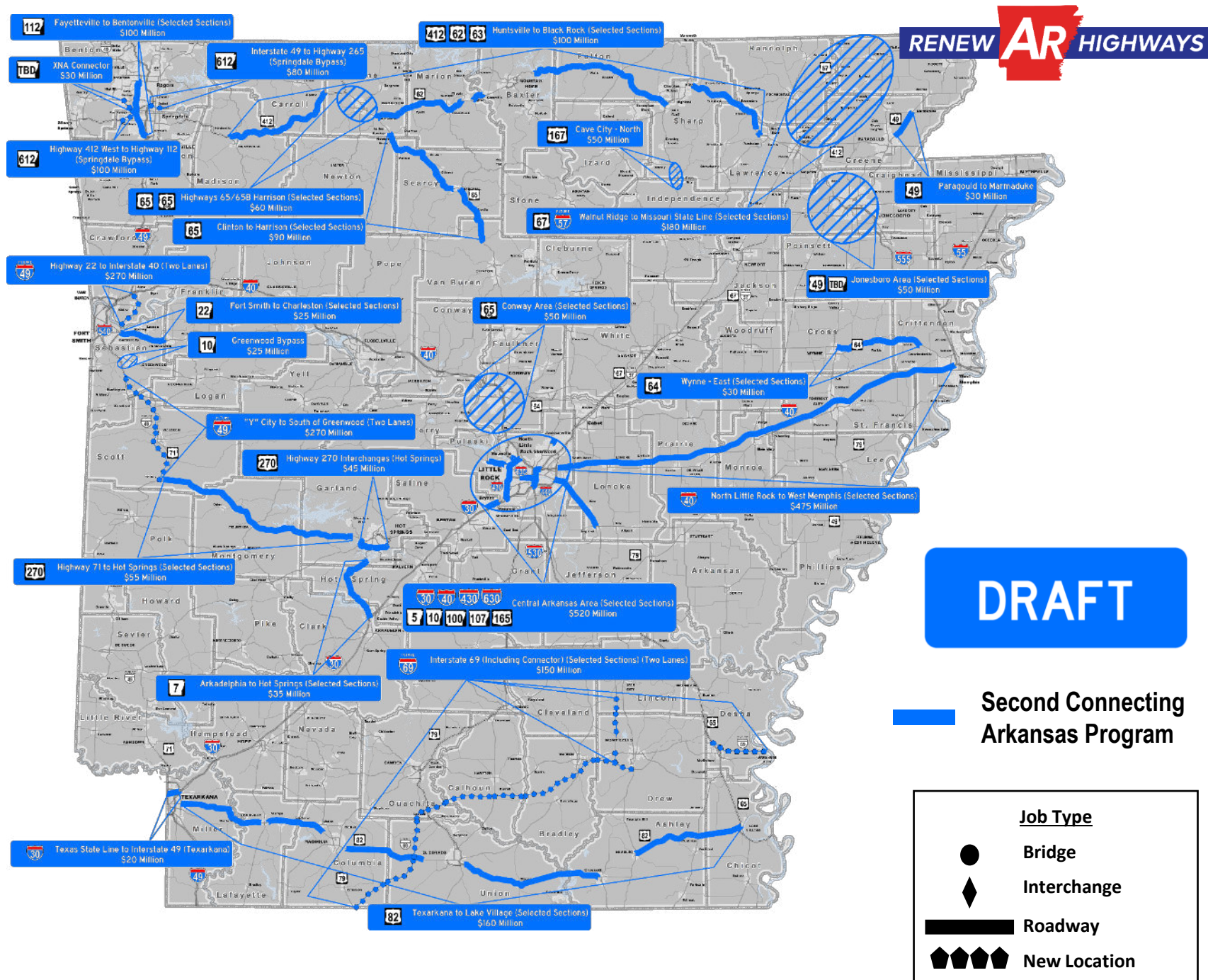


**20-Year Total**

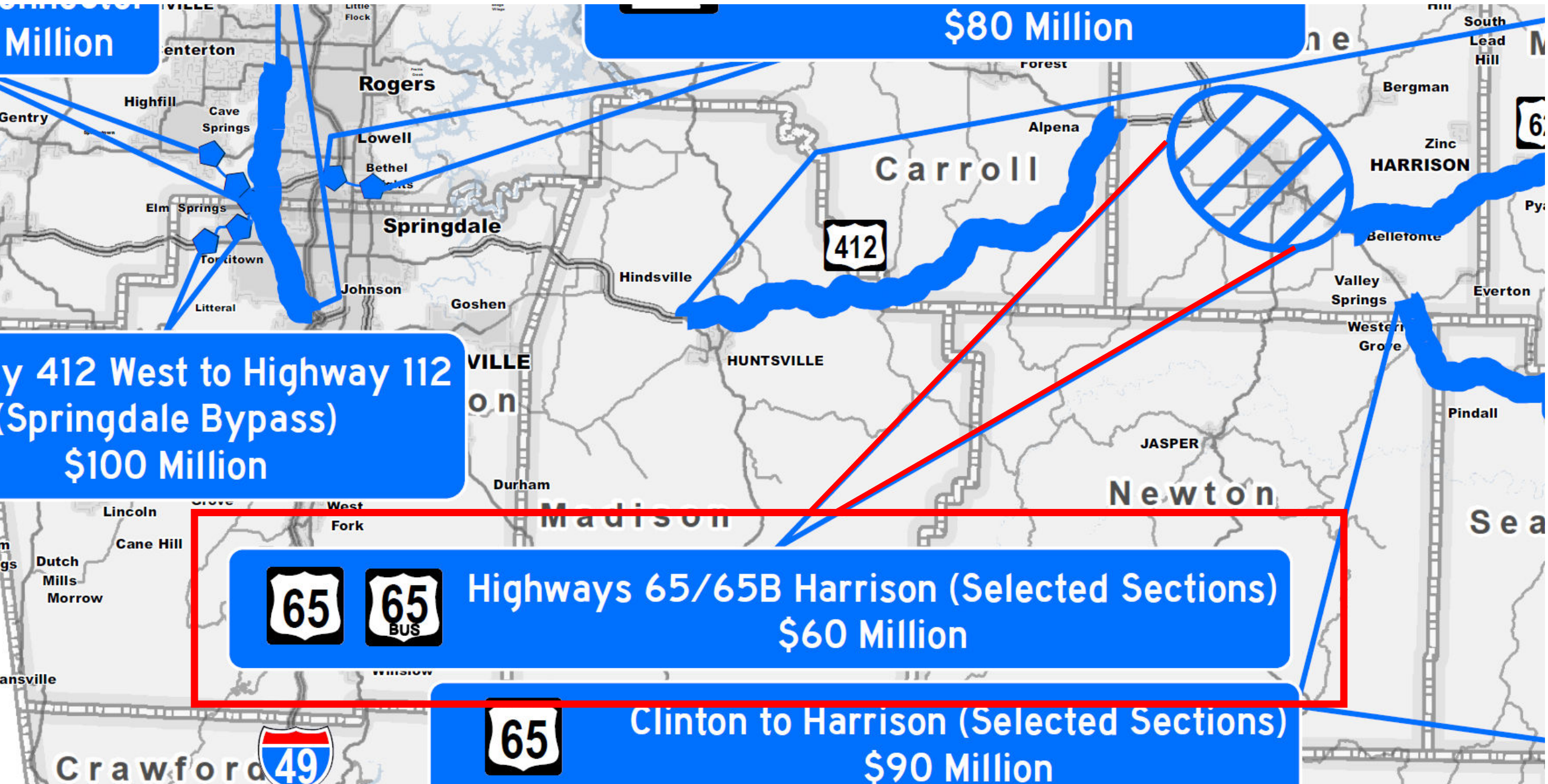
**\$ 3.6 Billion**



# Second Connecting Arkansas Program







Million

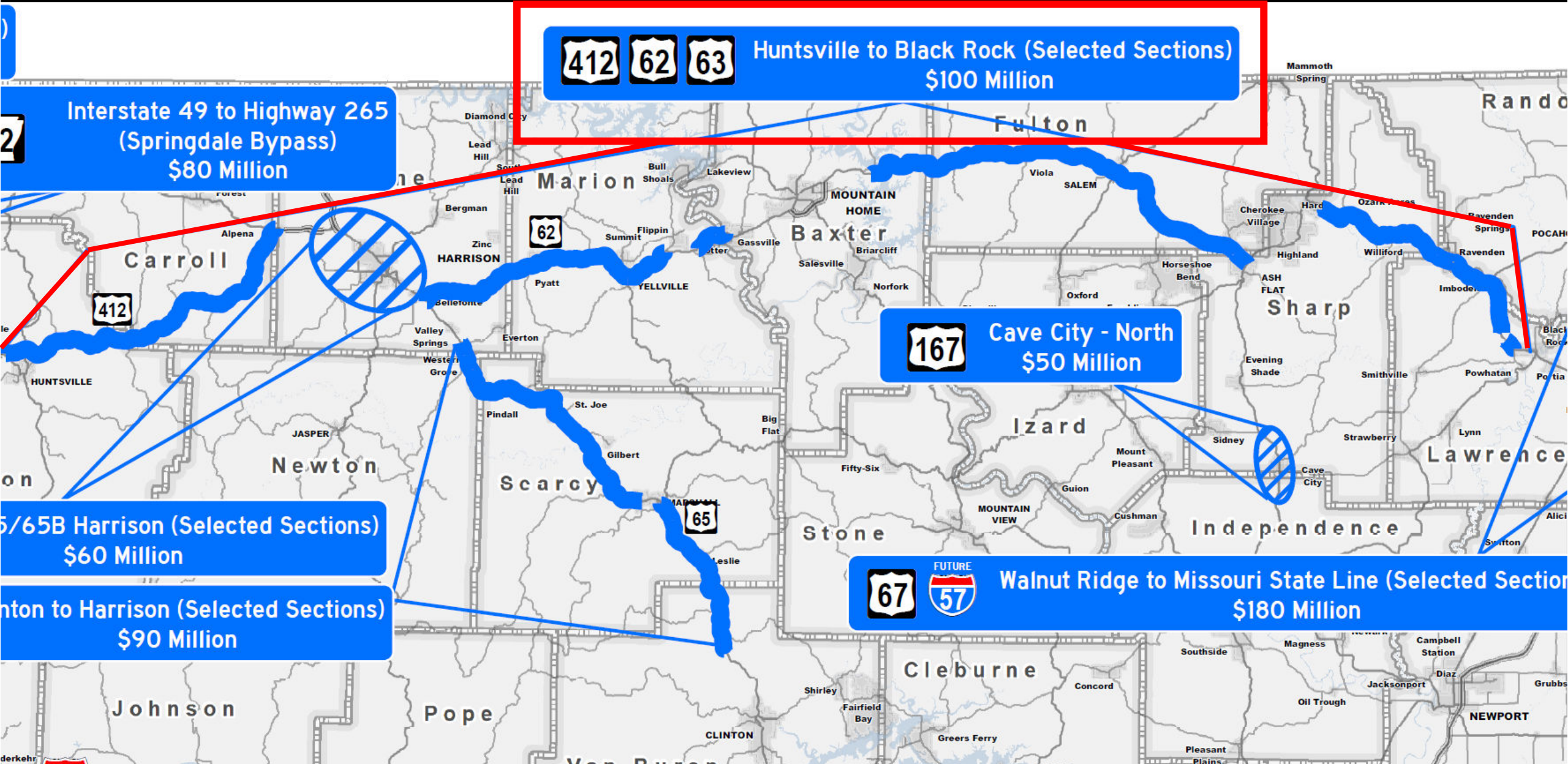
\$80 Million

y 412 West to Highway 112  
(Springdale Bypass)  
\$100 Million

  Highways 65/65B Harrison (Selected Sections)  
\$60 Million

 Clinton to Harrison (Selected Sections)  
\$90 Million





2

Interstate 49 to Highway 265  
(Springdale Bypass)  
\$80 Million

412 62 63 Huntsville to Black Rock (Selected Sections)  
\$100 Million

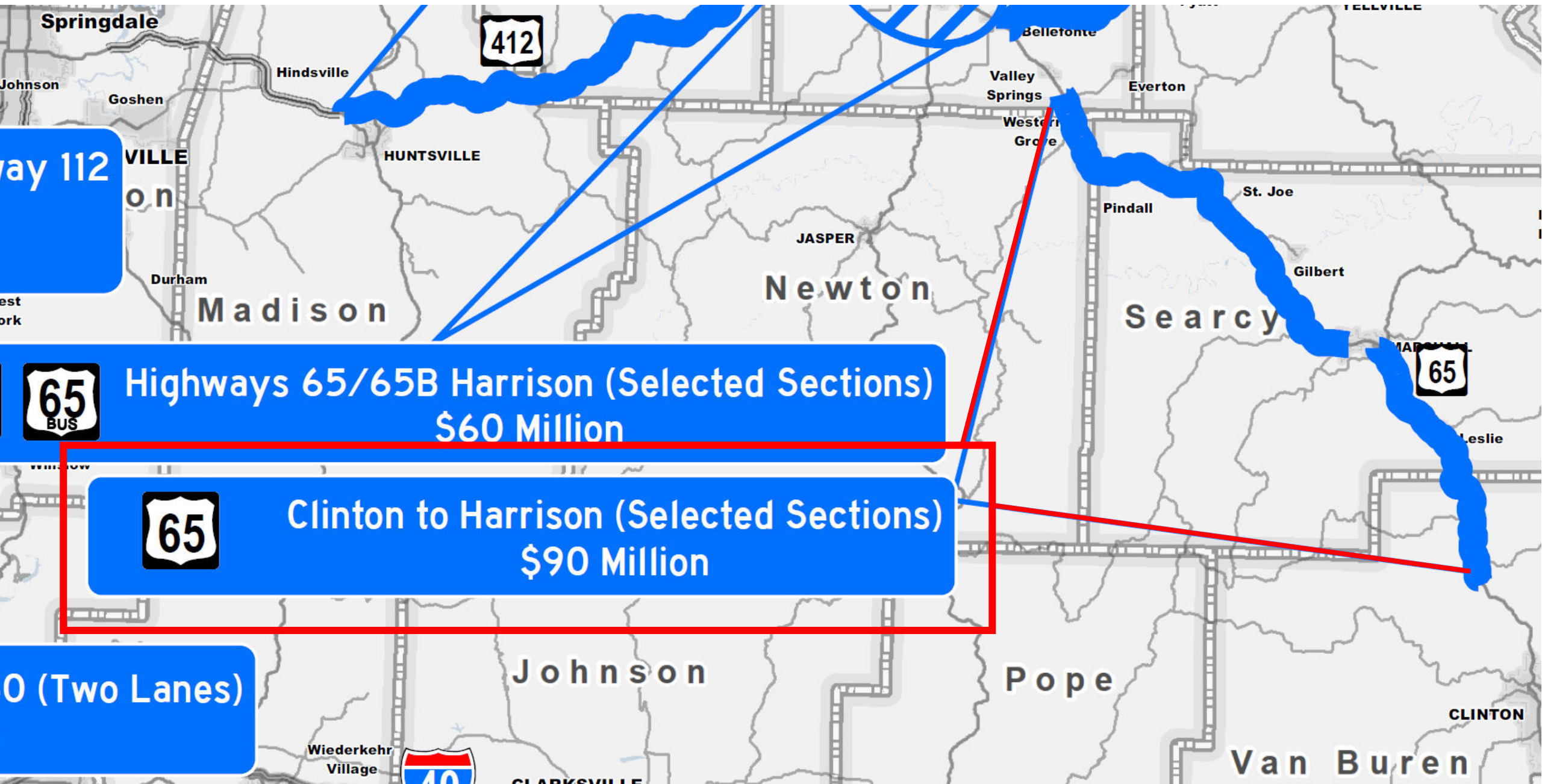
167 Cave City - North  
\$50 Million

5/65B Harrison (Selected Sections)  
\$60 Million

Harrison to Harrison (Selected Sections)  
\$90 Million

67 57 FUTURE Walnut Ridge to Missouri State Line (Selected Section)  
\$180 Million





ay 112



Highways 65/65B Harrison (Selected Sections)  
\$60 Million



Clinton to Harrison (Selected Sections)  
\$90 Million

0 (Two Lanes)



FEDERAL FISCAL YEARS  
2023-2026

STATEWIDE  
TRANSPORTATION  
IMPROVEMENT  
PROGRAM

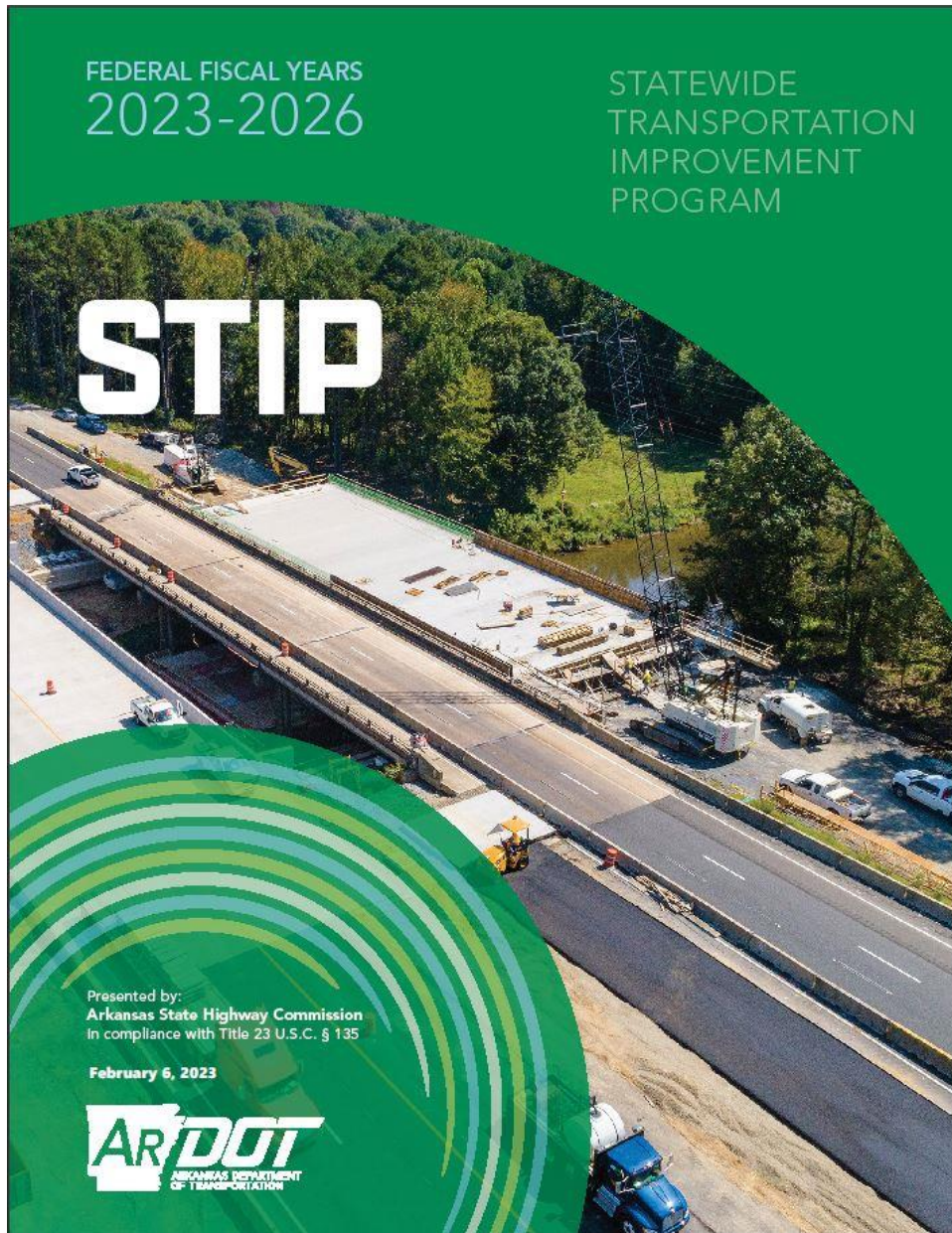
# STIP

Presented by:  
Arkansas State Highway Commission  
In compliance with Title 23 U.S.C. § 135

February 6, 2023

# Statewide Transportation Improvement Plan



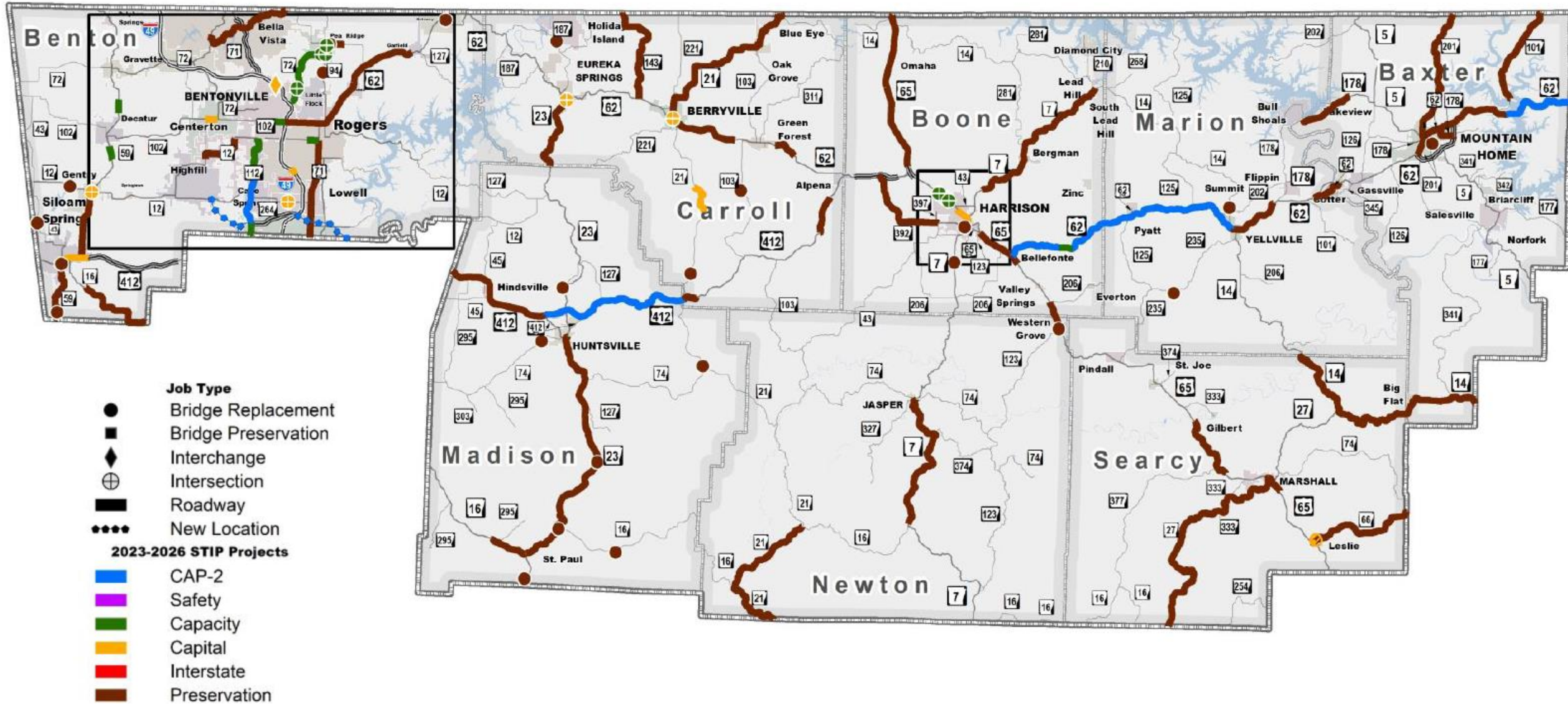


Comment period ended  
October 20, 2022.

Next STIP 2025-2028



# District 9 STIP Map





# Boone County STIP Map

- Job Type**
- Bridge Replacement
  - Bridge Preservation
  - ◆ Interchange
  - ⊕ Intersection
  - ▬ Roadway
  - New Location
- 2023-2026 STIP Projects**
- CAP-2
  - Safety
  - Capacity
  - Capital
  - Interstate
  - Preservation

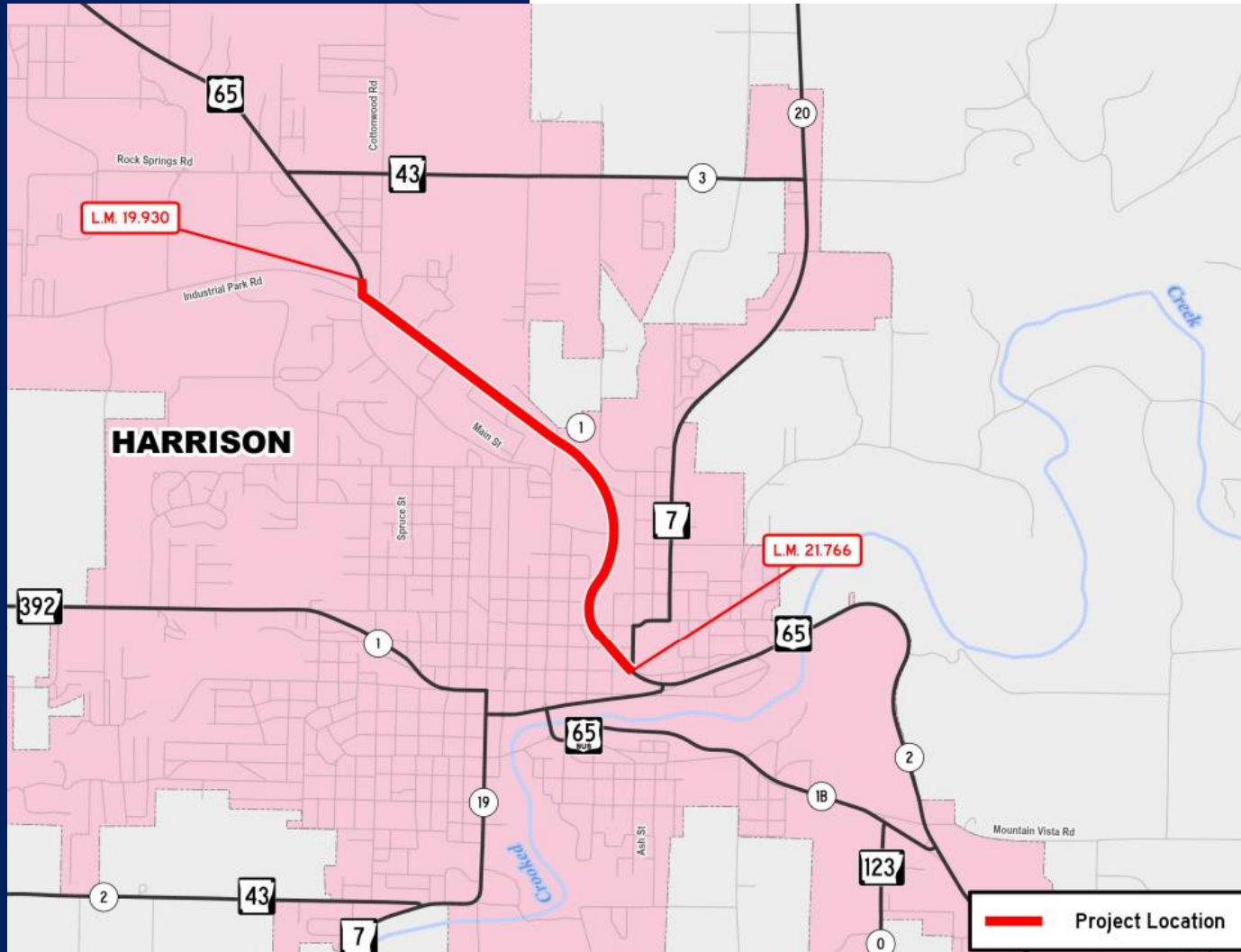






# Industrial Park Rd. – Highway 7

## BOONE COUNTY

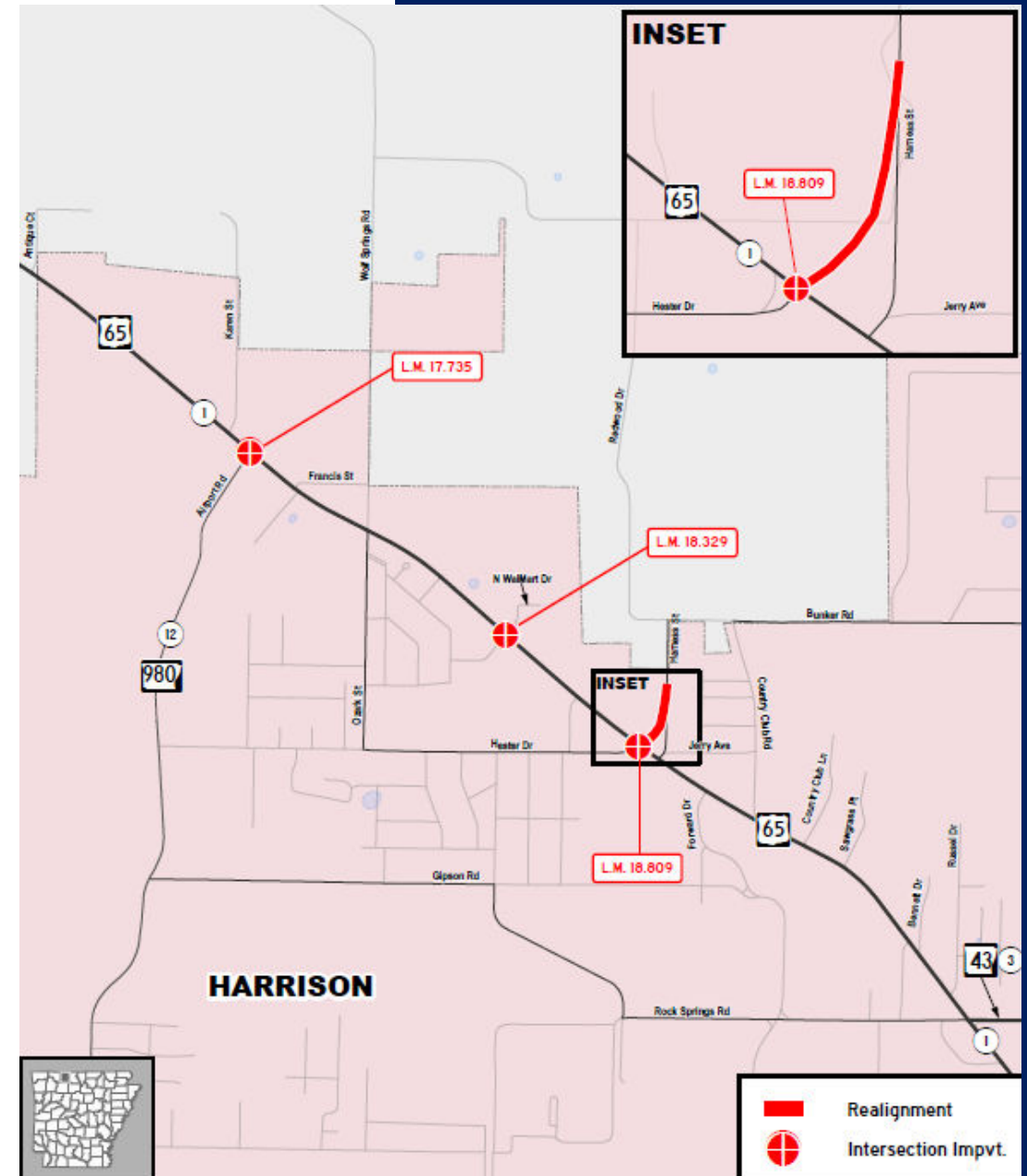


- Safety Improvements
- 2 Miles
- \$10-20 Million
- Scheduled Late 2025



# Highway 65 BOONE COUNTY

- Safety Improvements
- 3 Intersections
- \$1-3 Million
- Scheduled for Mid 2024



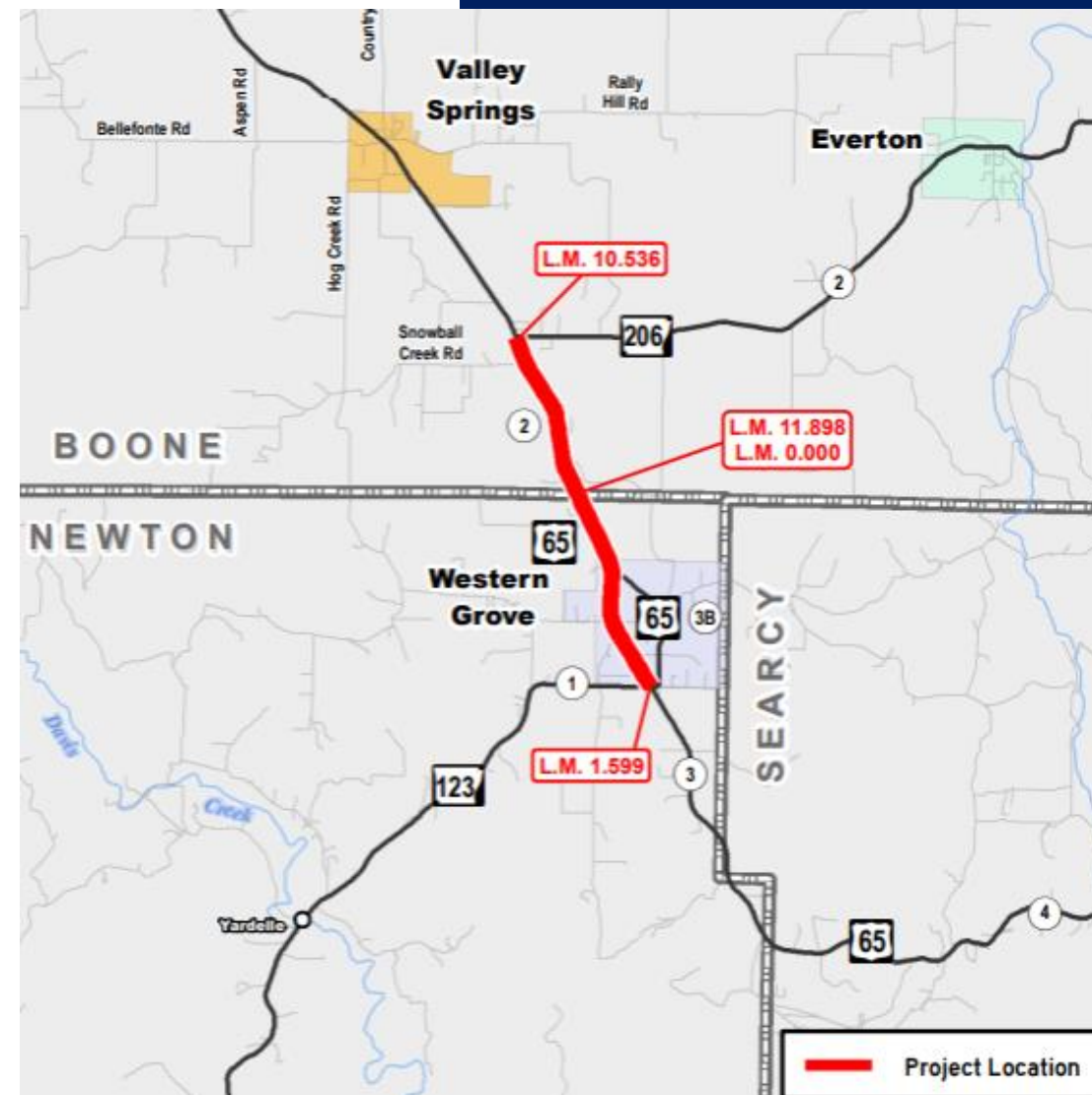


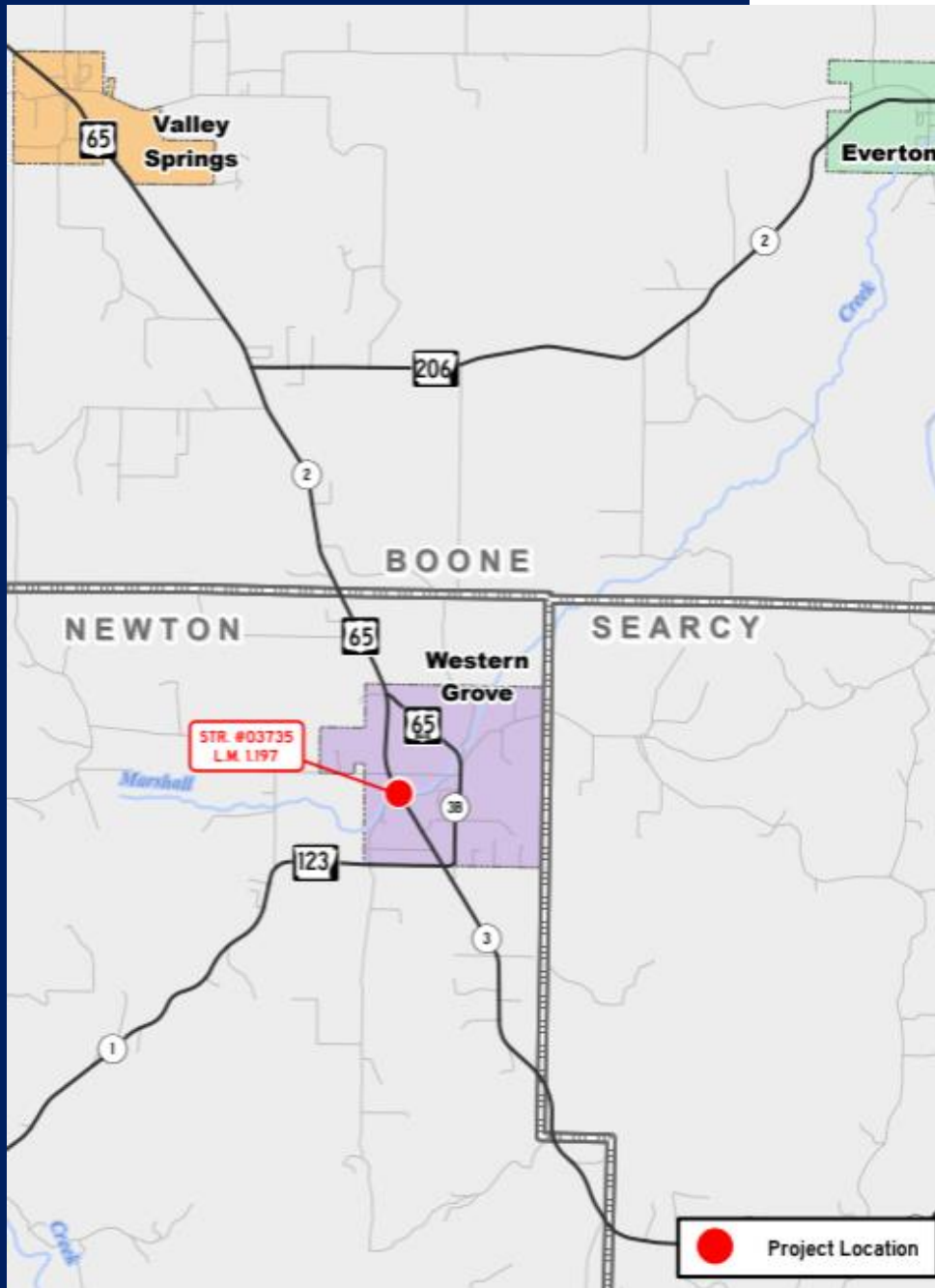


# Highway 206 – Highway 123

## BOONE AND NEWTON COUNTIES

- Major Widening
- 3 Miles
- \$15-20 Million
- Not Currently Scheduled





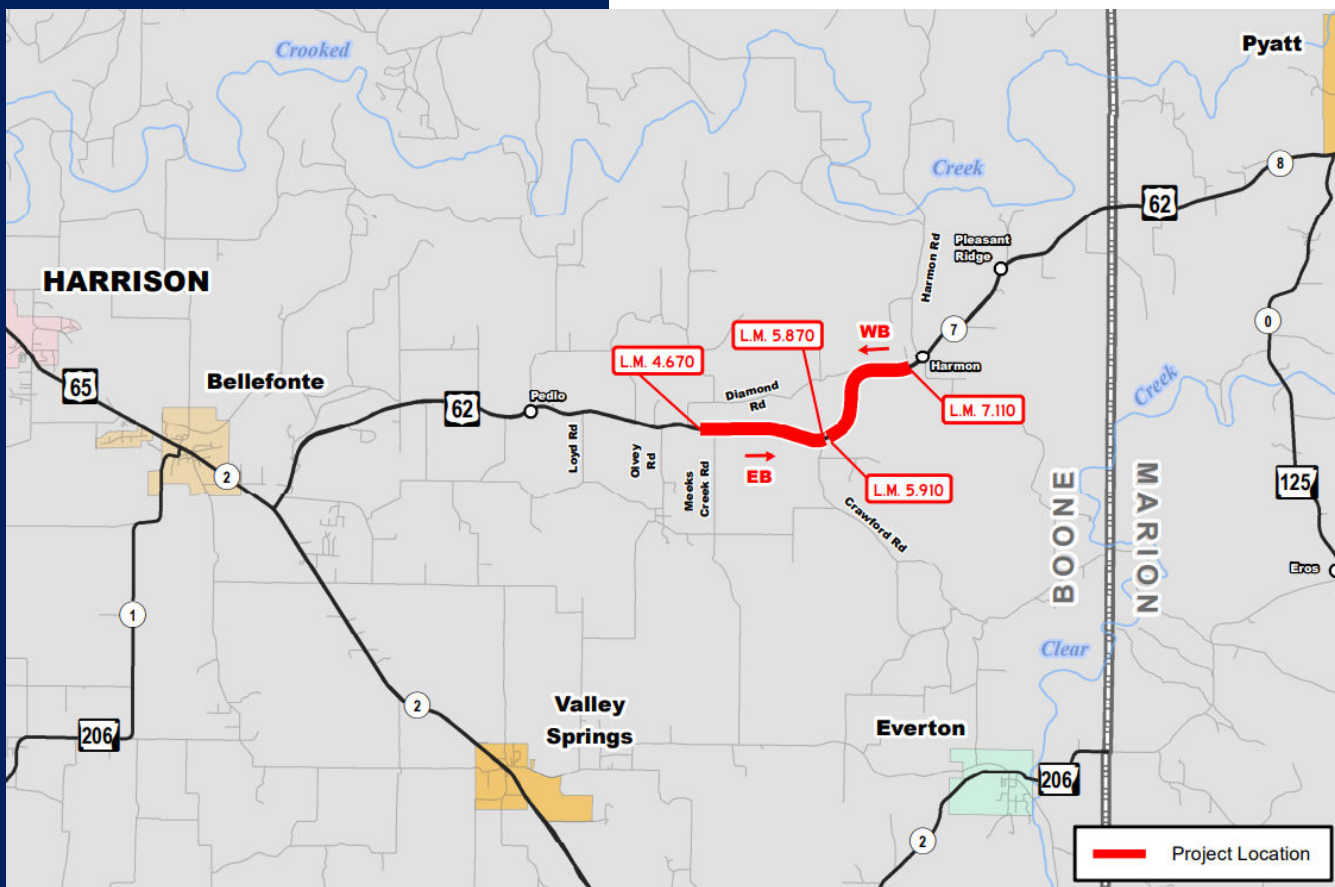
## Marshall Creek Bridge **NEWTON COUNTY**

- Structure Replacement
- \$1-3 Million
- Scheduled 2025





# Bellefonte – Marion County Line **BOONE COUNTY**



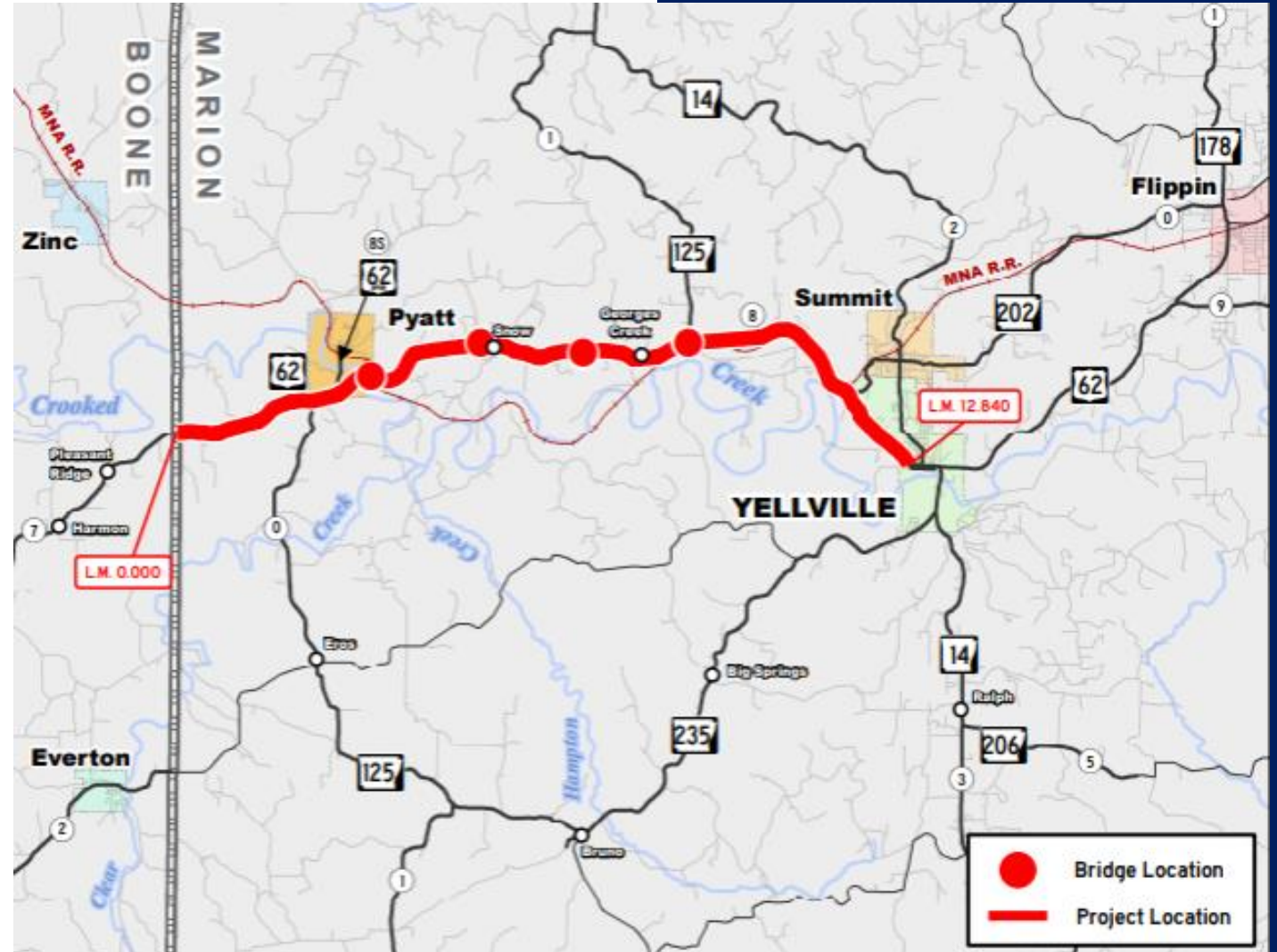
- Addition of Passing Lanes
- 2 Miles
- \$10-15 Million
- Scheduled Mid 2024



# Boone County Line – Yellville

## MARION COUNTY

- Alternating Passing Lanes
- \$20-30 Million
- Not Currently Scheduled

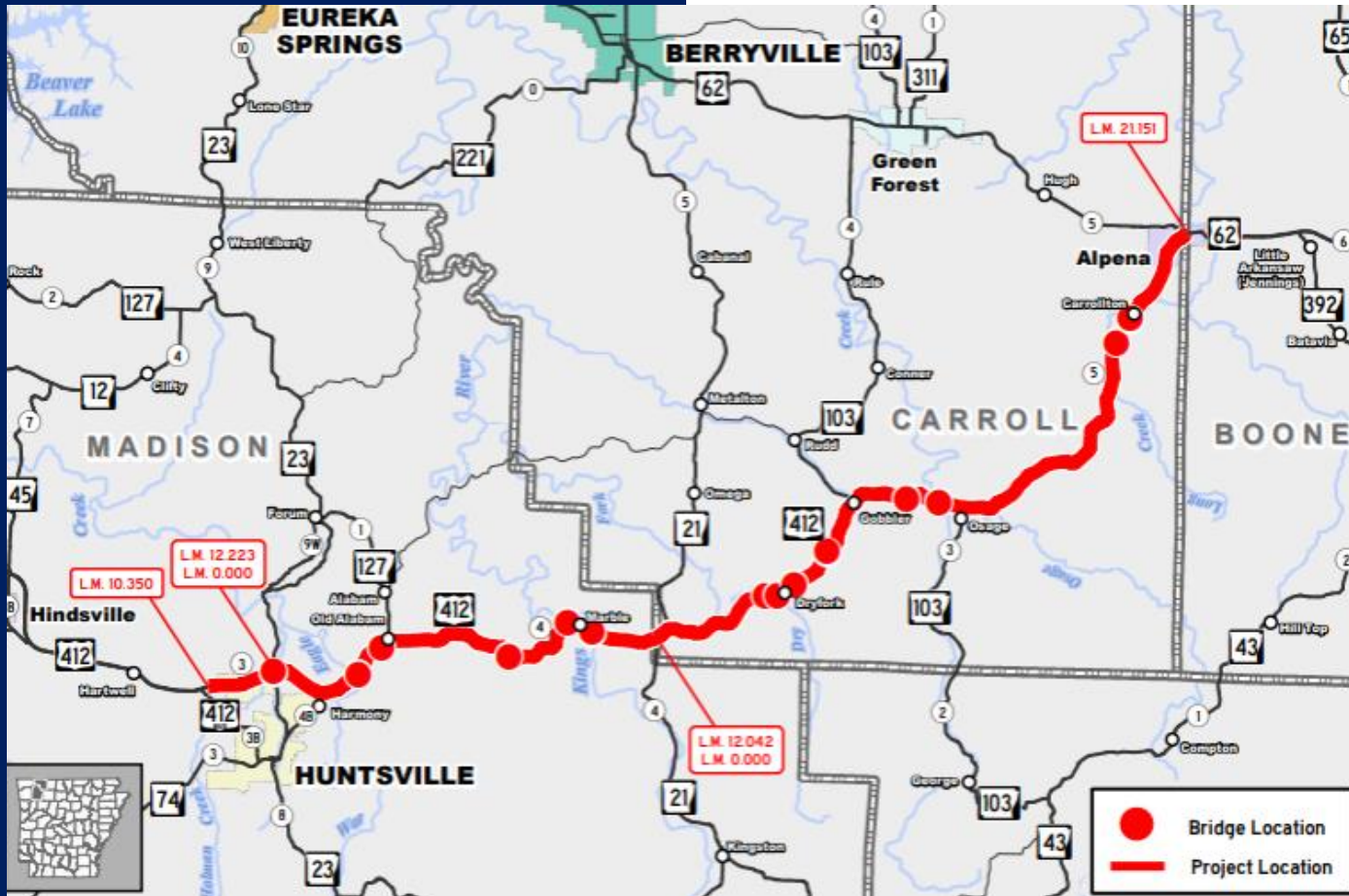






# Huntsville - Alpena

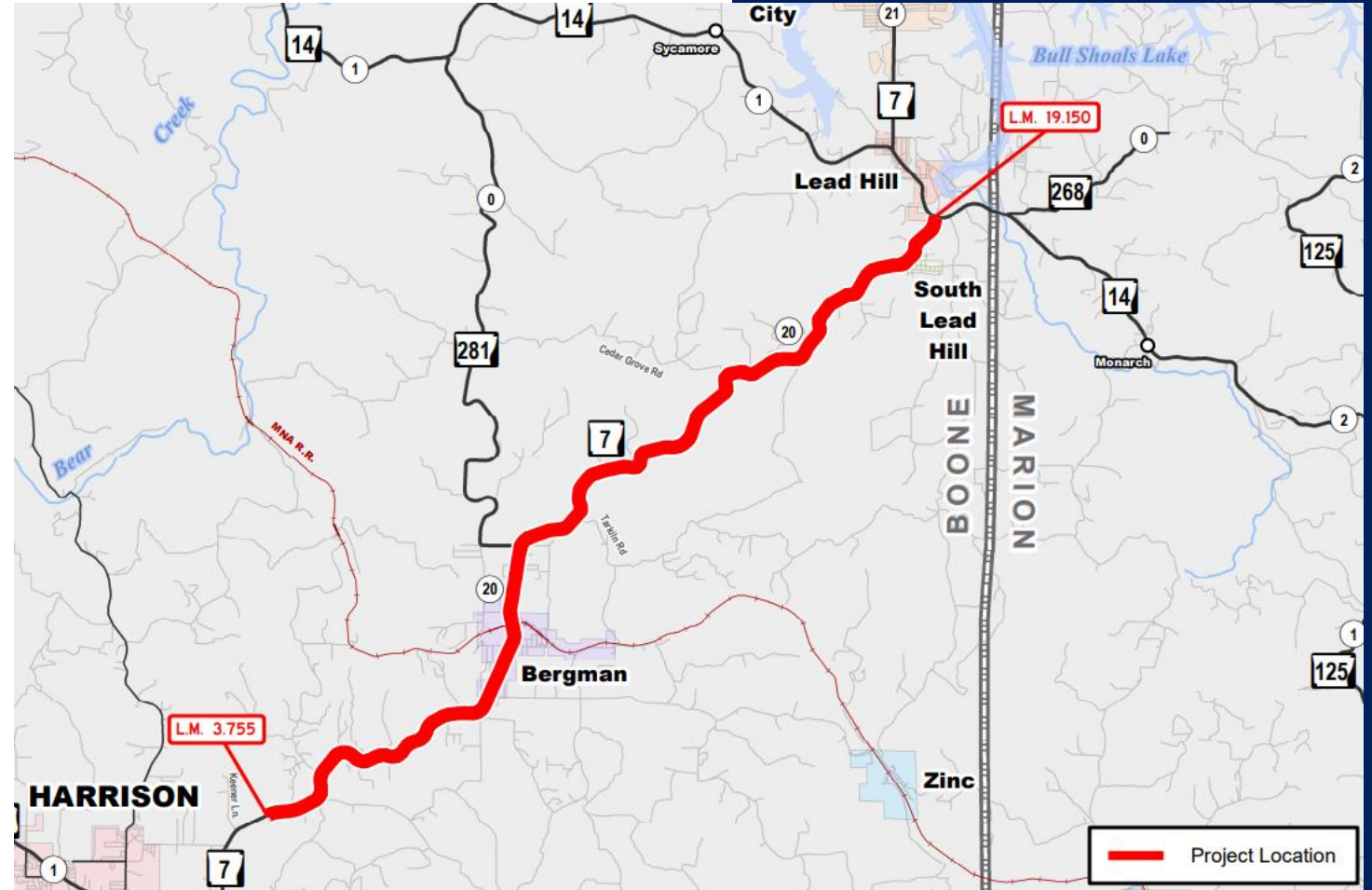
## CARROLL & MADISON COUNTIES



- Passing Lanes
- 35 Miles
- \$40-50 Million
- Not Currently Scheduled

# **7** Harrison – Lead Hill BOONE COUNTY

- Pavement Preservation
- 15 Miles
- \$5-10 Million
- Scheduled for Mid 2024

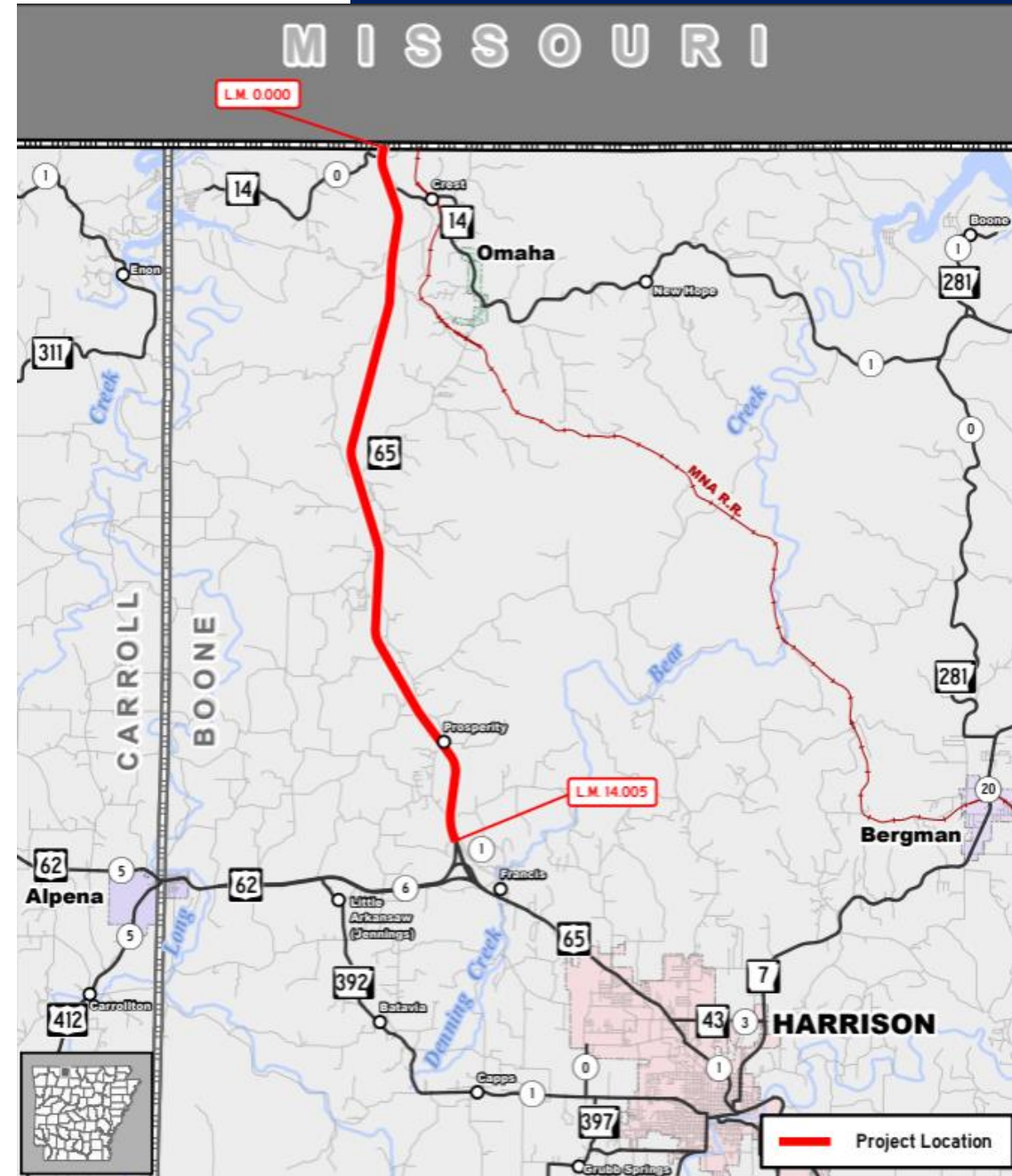






# Missouri State Line – Highway 62 **BOONE COUNTY**

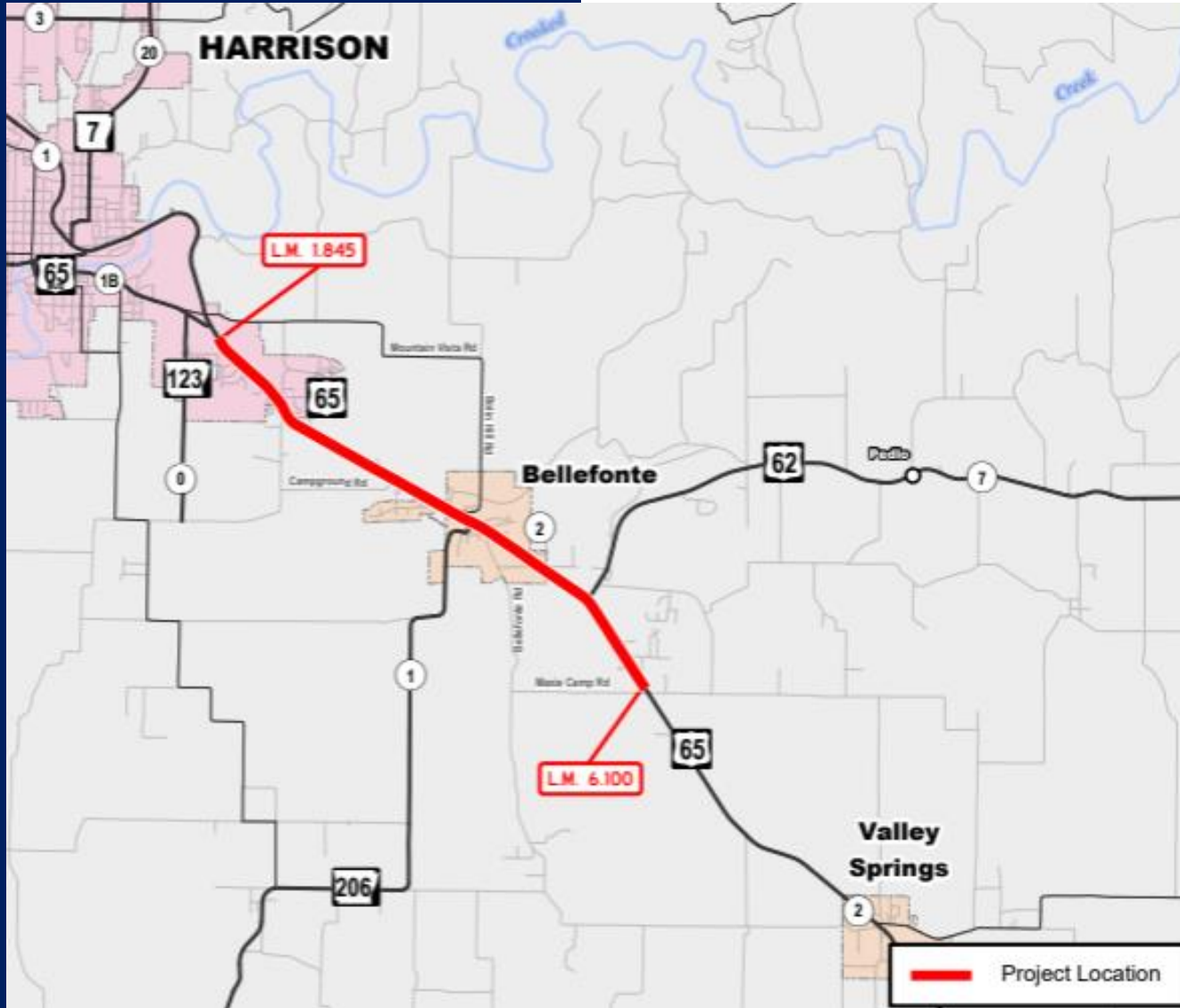
- Pavement Preservation
- 14 Miles
- \$5-10 Million
- Scheduled for 2025





# Highway 65B – Maxie Camp Rd.

## BOONE COUNTY



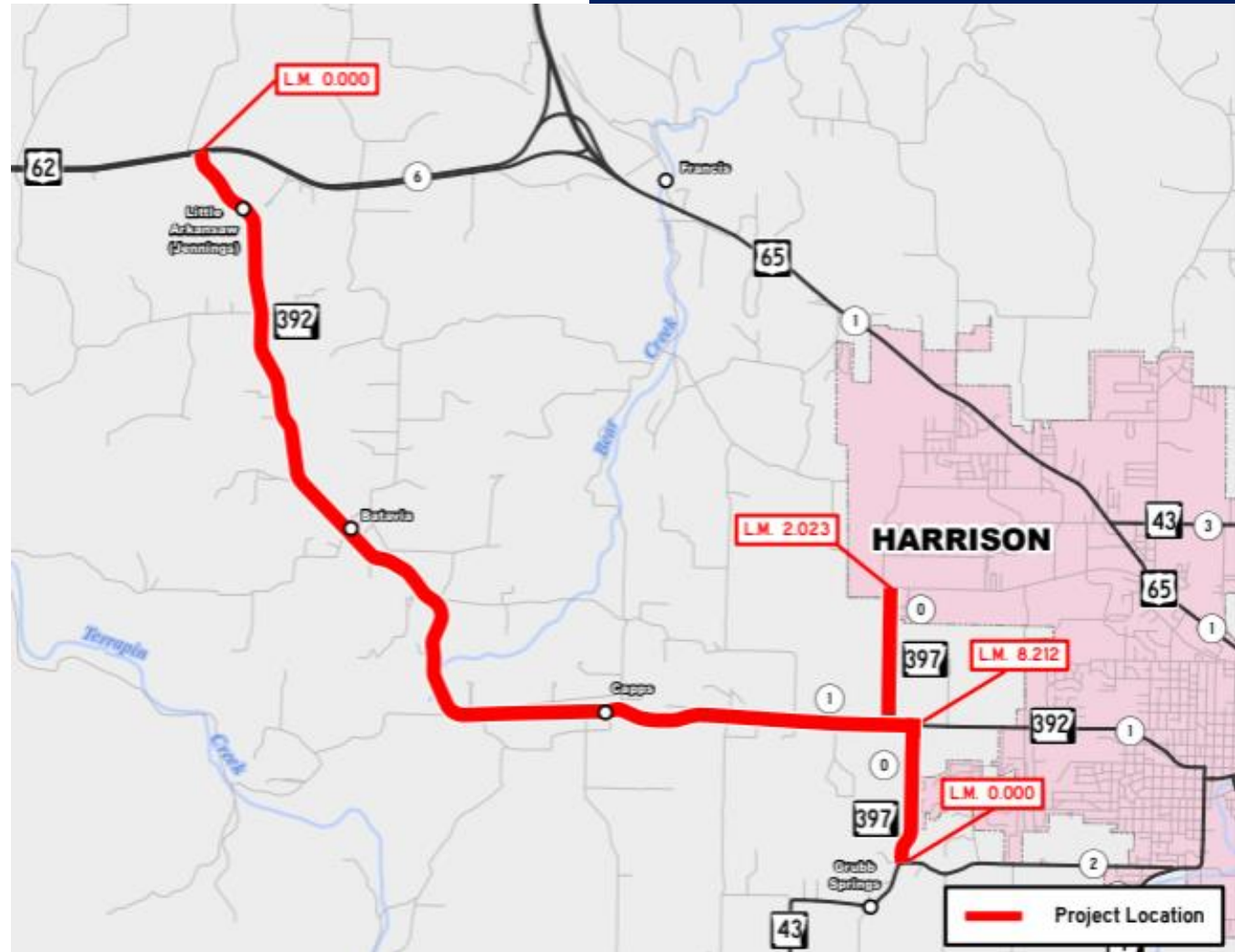
- Pavement Preservation
- 4 Miles
- \$1-2 Million
- Scheduled Mid 2024



# Highways 392 & 397

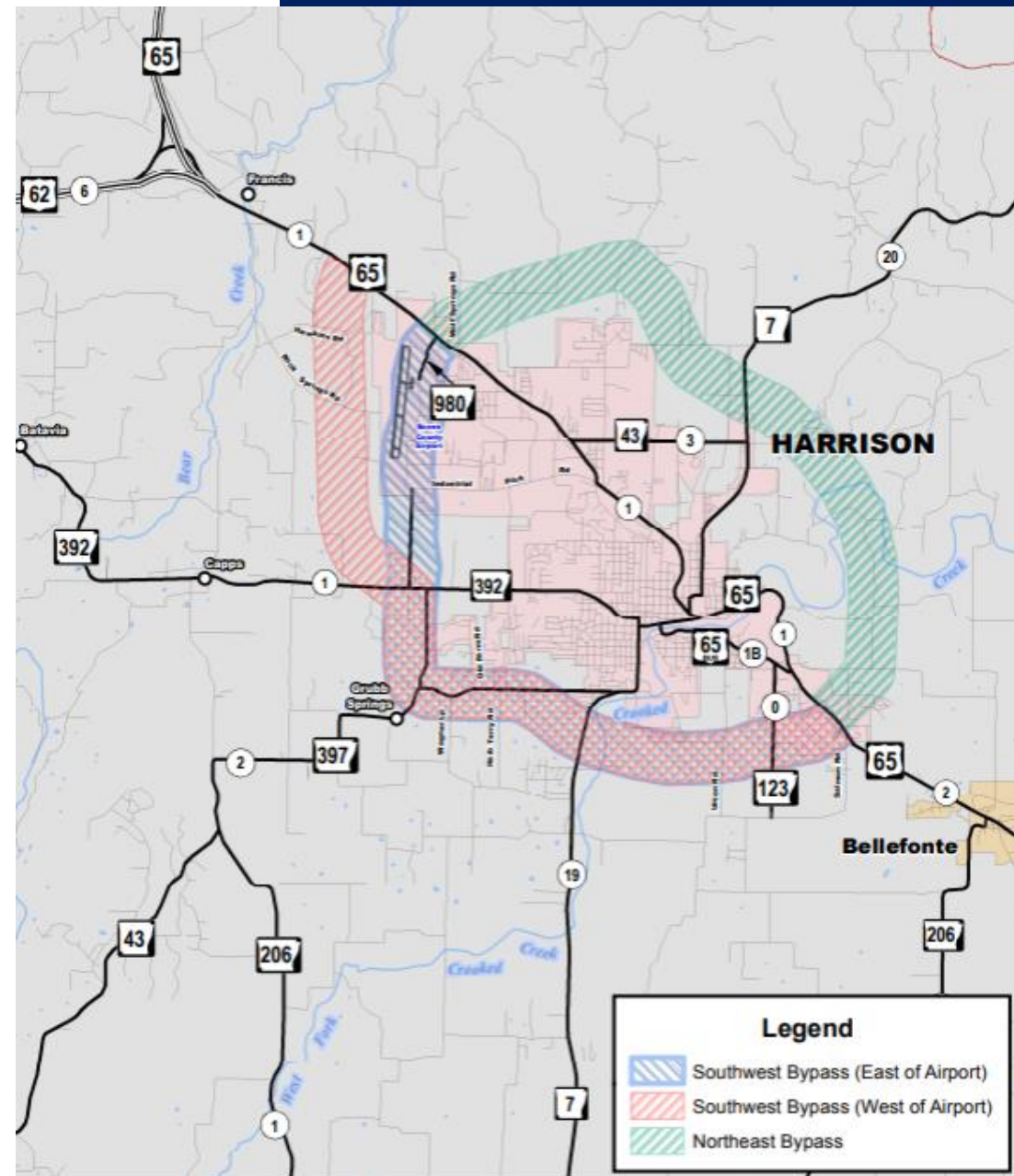
## BOONE COUNTY

- Pavement Preservation
- 10 Miles
- \$1-3 Million
- Scheduled for 2025

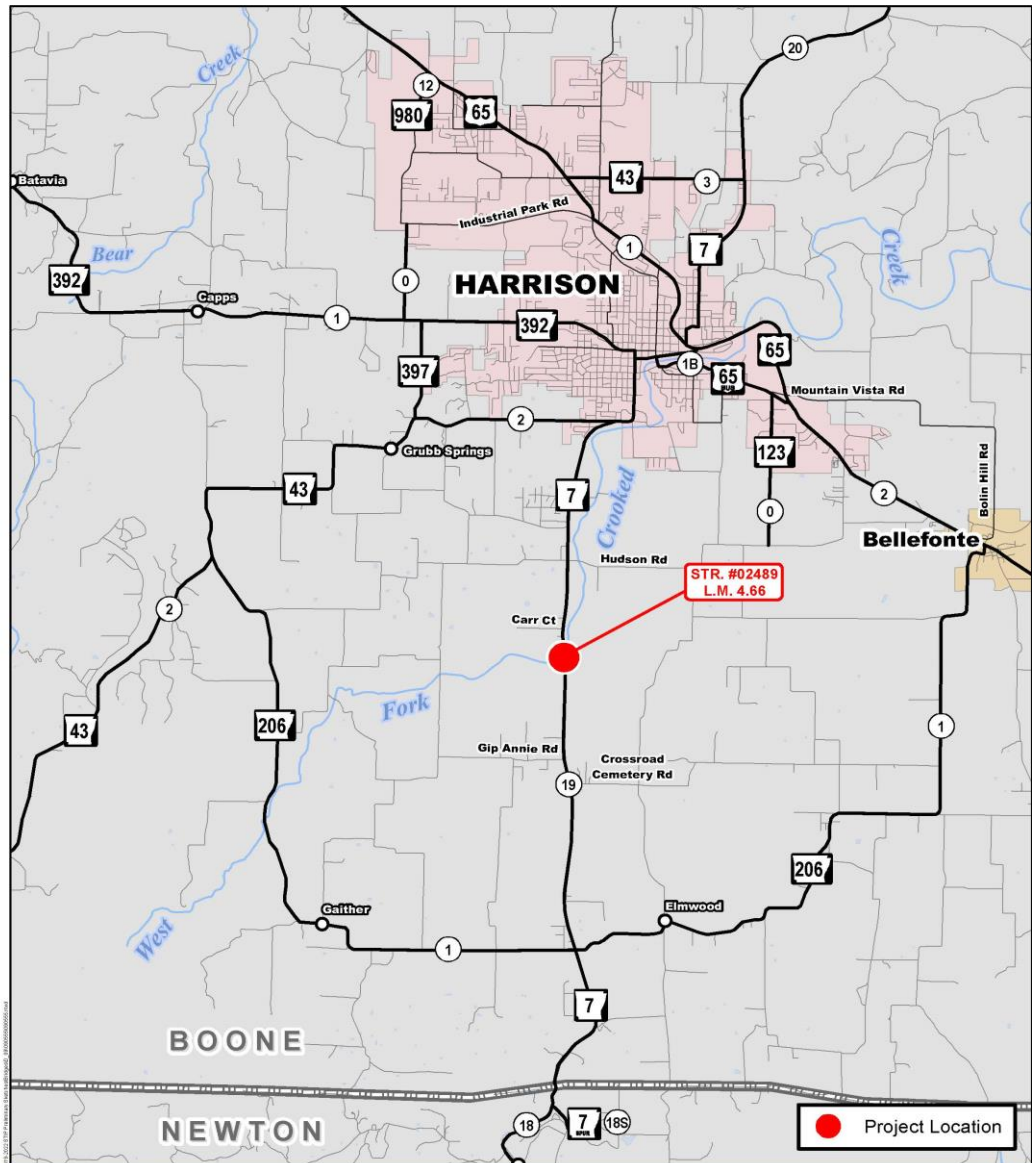


# Highway 65 Bypass BOONE COUNTY

- Planning Study Completed 2014
- Evaluated Various Potential Routes







**Job 090555**

**West Fork Crooked Creek Str. & Apprs. (S)**

Hwy. 7, Sec. 19  
Boone County



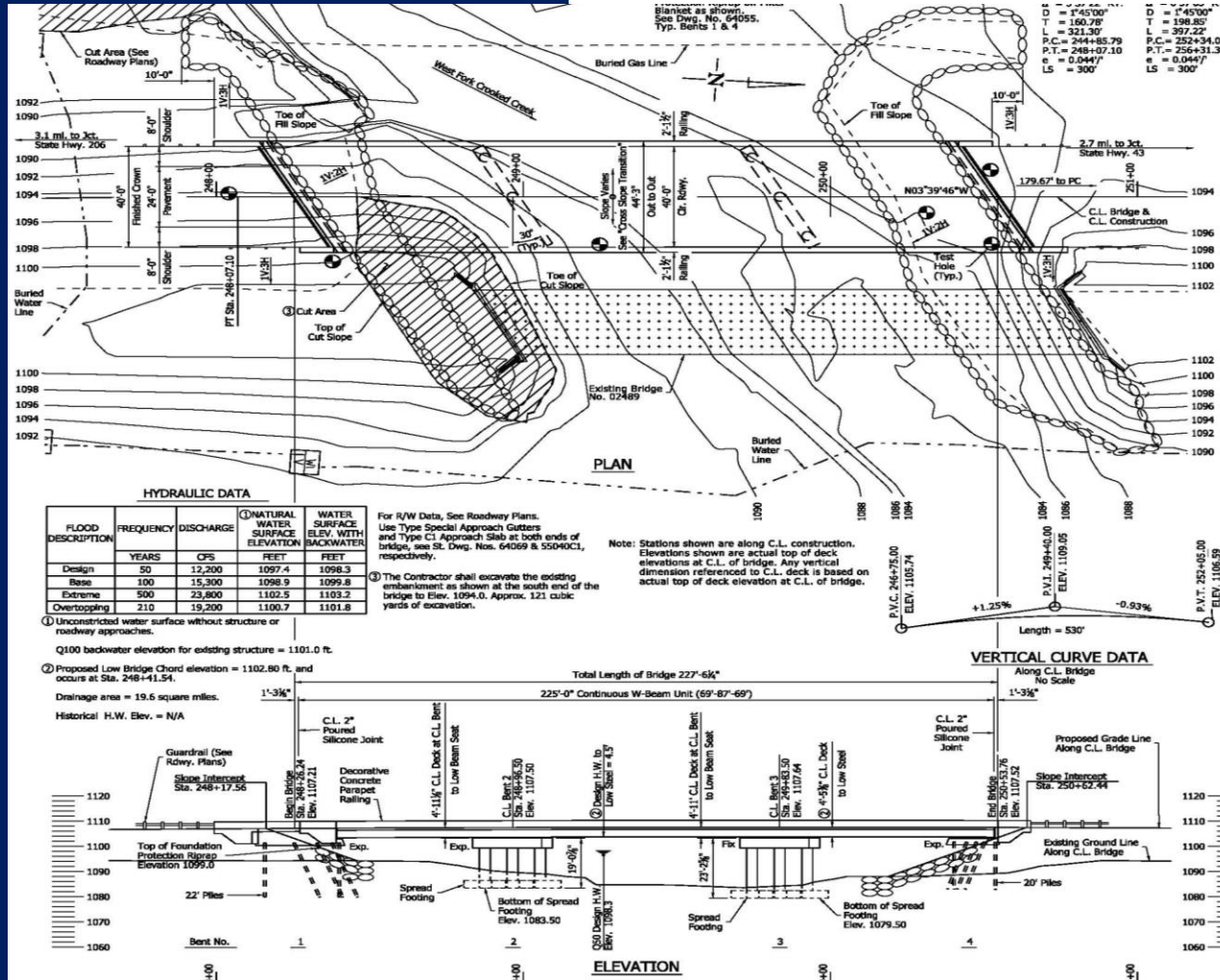
**7**

## West Fork Crooked Creek Strs. & Apprs. **BOONE COUNTY**

- Bridge Replacement
- \$4.7 Million
- Awarded November 2022

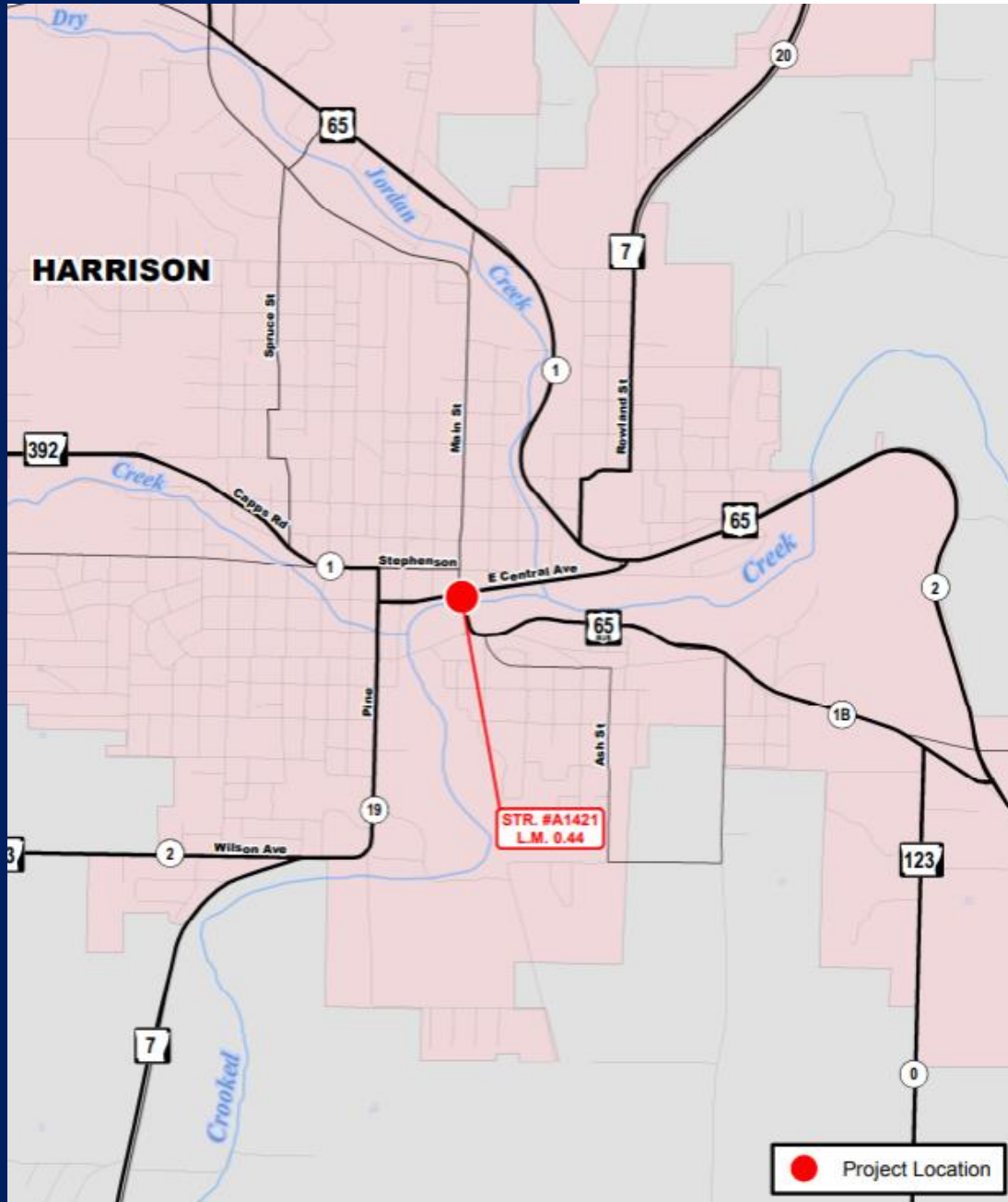


# West Fork Crooked Creek Strs. & Apprs. BOONE COUNTY



- Crouse Construction
- Contract Time 225 working days
- Est. Completion Fall 2024





## Lake Harrison Bridge **BOONE COUNTY**

- Bridge Replacement
- \$9.8 Million
- Awarded September 2023

ARKANSAS DEPARTMENT OF TRANSPORTATION  
CONSTRUCTION PLANS FOR STATE HIGHWAY

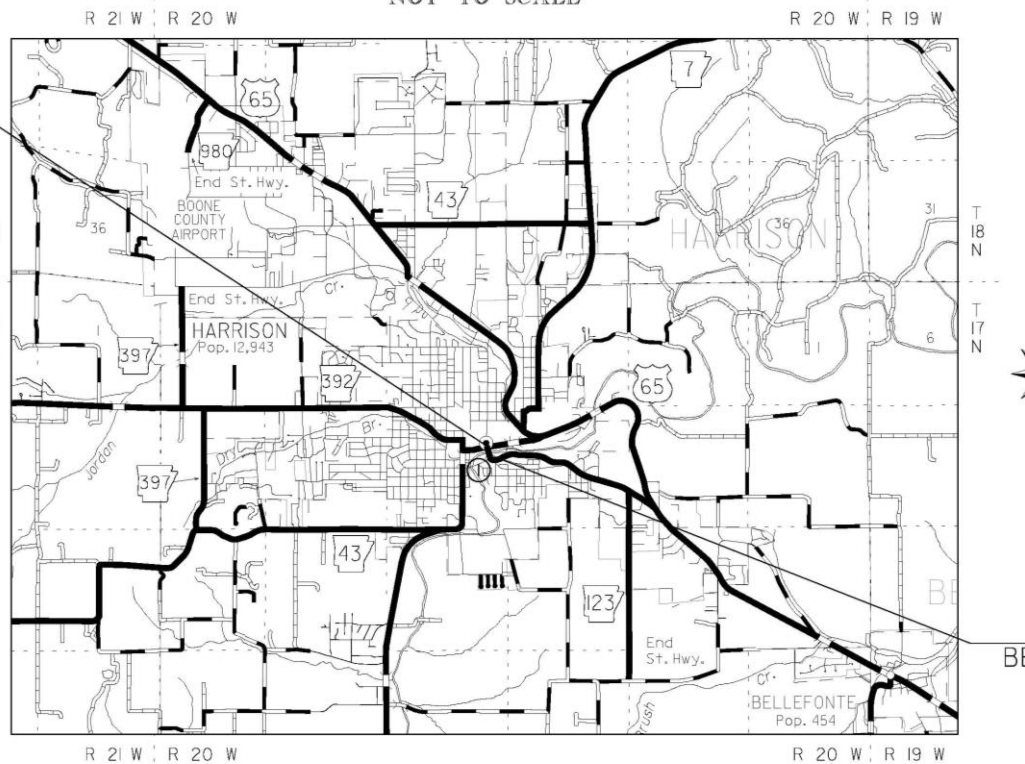
CROOKED CREEK STR. &  
APPRS. (HARRISON) (S)

BOONE COUNTY  
ROUTE 65B SECTION 1B  
FED. AID PROJ. BFP-0005(52)

PROJECT  
LOCATION

JOB 090550

NOT TO SCALE



# Lake Harrison Bridge

## BOONE COUNTY

- West Plains Bridge & Grading





# Boone County Projects

ARKANSAS DEPARTMENT OF TRANSPORTATION  
CONSTRUCTION PLANS

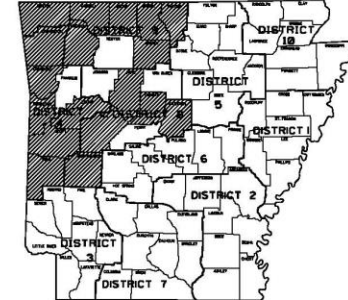
DISTRICTS 4, 8 & 9 BRIDGE  
PRESERVATION (2022) (S)

VARIOUS COUNTIES

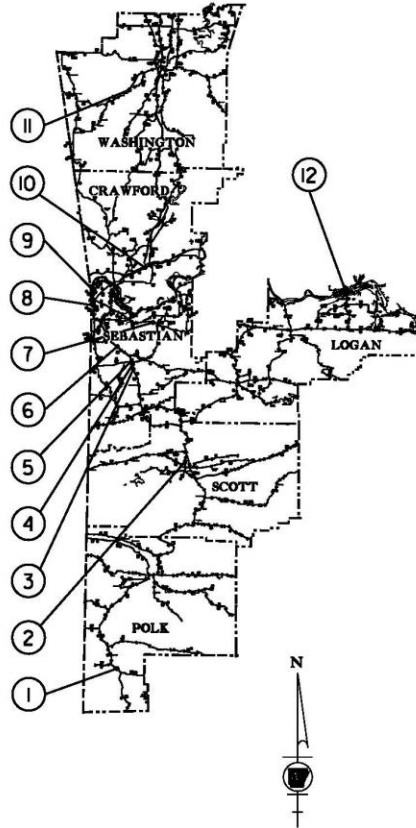
JOB 012408

FED. AID PROJ. NHPP-BFP-0076(268)

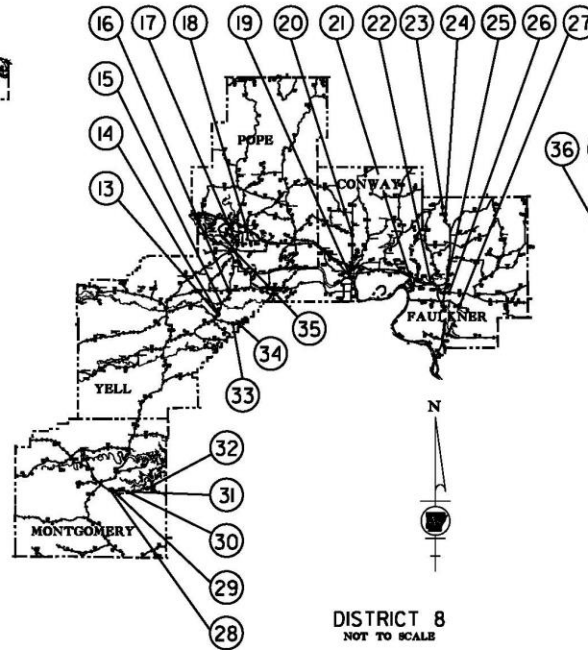
DATE REVISED	DATE REVISED	FEEDBACK NO.	STATE	JOB NO.	SHEET NO.	TOTAL SHEETS
06-07-22		6	ARK.	012408	1	55
DISTRICTS 4, 8 AND 9 BRIDGE PRESERVATION (2022) (S)						



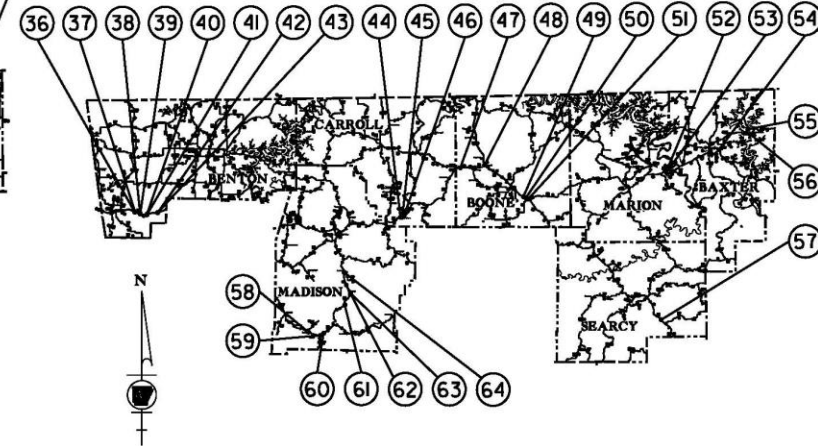
ARKANSAS HIGHWAY DISTRICTS 4, 8 & 9



DISTRICT 4  
NOT TO SCALE



DISTRICT 8  
NOT TO SCALE



DISTRICT 9  
NOT TO SCALE

NOTES:

1. BRIDGE DATA IS ON PLAN SHEETS 2 & 3.
2. REFER TO SPECIAL DETAILS FOR INSET ENLARGEMENTS AT BRIDGE LOCATIONS.

LENGTH CALCULATED ALONG C.L. BRIDGES			
NET LENGTH OF ROADWAY	00000.00 FEET	0.000 MILES	
NET LENGTH OF BRIDGES	36260.10 FEET	6.867 MILES	
NET LENGTH OF PROJECT	36260.10 FEET	6.867 MILES	



6-7-22

I:\projects\012408\012408.dwg 6/7/2022 10:27:03 AM  
 T:\projects\012408\012408.dwg 6/7/2022 10:27:03 AM  
 REVISED DATA: 6/7/2022



# Boone County Projects

DATE REVISED	DATE REVISED	STATE	JOB NO.	SHEET NO.	TOTAL SHEETS
		6	ARK. 012408	31	55



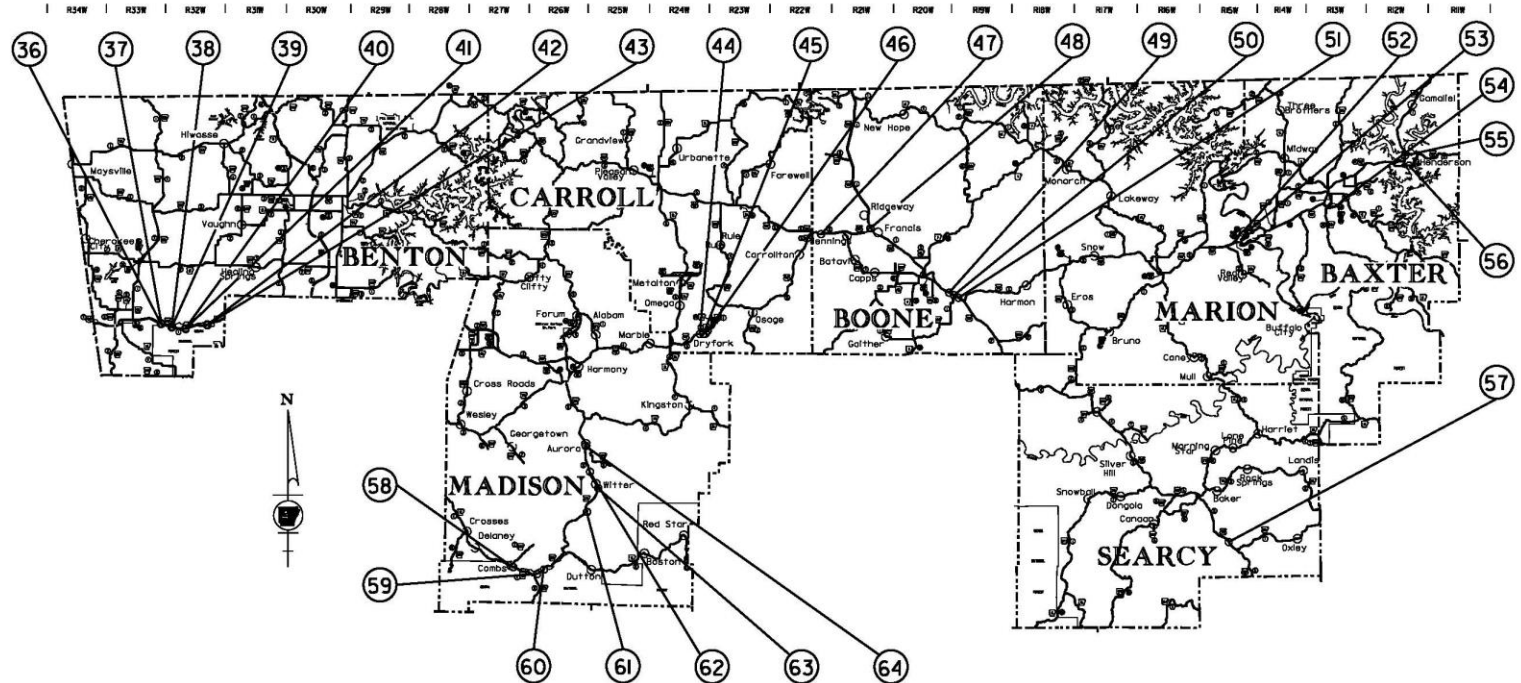
4-28-22



ARKANSAS HIGHWAY DISTRICT 9

LEGEND  
○ - POLYMER OVERLAY

- 58 HWY. 16, SEC. 4  
LOG MILE 10.929 BR. END  
OVER MILL CREEK  
165' - 0" BRIDGE NO. 05933  
32' - 0" CLEAR ROADWAY  
(POLYMER OVERLAY)
- 59 HWY. 23, SEC. 8  
LOG MILE 3.369 BR. END  
OVER FLEMING CREEK  
242' - 2 1/4" BRIDGE NO. 06512  
36' - 0" CLEAR ROADWAY  
(POLYMER OVERLAY)
- 60 HWY. 23, SEC. 8  
LOG MILE 4.144 BR. END  
OVER WHITE RIVER  
327' - 11 3/8" BRIDGE NO. 06370  
36' - 0" CLEAR ROADWAY  
(POLYMER OVERLAY)
- 61 HWY. 23, SEC. 8  
LOG MILE 12.892 BR. END  
OVER WAR EAGLE CREEK  
190' - 2 5/8" BRIDGE NO. 06798  
36' - 0" CLEAR ROADWAY  
(POLYMER OVERLAY)
- 62 HWY. 23, SEC. 8  
LOG MILE 15.781 BR. END  
OVER KECKS CREEK  
149' - 7 3/16" BRIDGE NO. 06407  
36' - 0" CLEAR ROADWAY  
(POLYMER OVERLAY)
- 63 HWY. 23, SEC. 8  
LOG MILE 17.348 BR. END  
OVER SHAIS CREEK  
116' - 1" BRIDGE NO. 06408  
36' - 0" CLEAR ROADWAY  
(POLYMER OVERLAY)
- 64 HWY. 23, SEC. 8  
LOG MILE 20.195 BR. END  
OVER HENDERSON CREEK  
231' - 3 3/16" BRIDGE NO. 06409  
36' - 0" CLEAR ROADWAY  
(POLYMER OVERLAY)



DISTRICT 9  
INSET - 3  
NOT TO SCALE

SPECIAL DETAILS

# Boone County Projects

## LEGEND

○ POLYMER OVERLAY

DATE REVISED	DATE REVISED	FEEDBACK NO.	STATE	JOB NO.	SHEET NO.	TOTAL SHEETS
		6	ARK.	02408	3	55



4-28-22

## BRIDGE DATA

- |   |  |  |  |   |
|---|--|--|--|---|
| <p>36 HWY. 412, SEC. 1<br/>LOG MILE 6.518 BR. END<br/>OVER BUTLER CREEK<br/>167' - 3 1/8" BRIDGE NO. A6475<br/>40' - 0" CLEAR ROADWAY<br/>(POLYMER OVERLAY)</p>     | <p>43 HWY. 412, SEC. 1<br/>LOG MILE 11.589 BR. END<br/>OVER ILLINOIS RIVER<br/>1343' - 6 7/16" BRIDGE NO. B6478<br/>40' - 0" CLEAR ROADWAY<br/>(POLYMER OVERLAY)</p> | <p>50 HWY. 65, SEC. 2<br/>LOG MILE 4.163 BR. END<br/>OVER DRY BRANCH<br/>102' - 5 1/8" BRIDGE NO. 06585<br/>58' - 0" CLEAR ROADWAY<br/>(POLYMER OVERLAY)</p>       | <p>57 HWY. 65, SEC. 6<br/>LOG MILE 6.174 BR. END<br/>OVER COVE CREEK<br/>181' - 0" BRIDGE NO. 07202<br/>40' - 0" CLEAR ROADWAY<br/>(POLYMER OVERLAY)</p>           | <p>64 HWY. 23, SEC. 8<br/>LOG MILE 20.195 BR. END<br/>OVER HENDERSON CREEK<br/>231' - 3 3/16" BRIDGE NO. 06409<br/>36' - 0" CLEAR ROADWAY<br/>(POLYMER OVERLAY)</p> |
| <p>37 HWY. 412, SEC. 1<br/>LOG MILE 7.154 BR. END<br/>OVER BUTLER CREEK<br/>167' - 3 1/8" BRIDGE NO. B6475<br/>40' - 0" CLEAR ROADWAY<br/>(POLYMER OVERLAY)</p>     | <p>44 HWY. 412, SEC. 5<br/>LOG MILE 3.475 BR. END<br/>OVER SITES BRANCH<br/>105' - 0" BRIDGE NO. 06576<br/>40' - 0" CLEAR ROADWAY<br/>(POLYMER OVERLAY)</p>          | <p>51 HWY. 65, SEC. 2<br/>LOG MILE 4.641 BR. END<br/>OVER HUZAZH CREEK<br/>117' - 5 5/8" BRIDGE NO. 06584<br/>58' - 0" CLEAR ROADWAY<br/>(POLYMER OVERLAY)</p>     | <p>58 HWY. 16, SEC. 4<br/>LOG MILE 10.529 BR. END<br/>OVER MILL CREEK<br/>165' - 0" BRIDGE NO. 05933<br/>32' - 0" CLEAR ROADWAY<br/>(POLYMER OVERLAY)</p>          |   |
| <p>38 HWY. 412, SEC. 1<br/>LOG MILE 5.494 BR. END<br/>OVER ILLINOIS RIVER<br/>1378' - 6 1/4" BRIDGE NO. A6476<br/>40' - 0" CLEAR ROADWAY<br/>(POLYMER OVERLAY)</p>  | <p>45 HWY. 412, SEC. 5<br/>LOG MILE 3.810 BR. END<br/>OVER DRY FORK<br/>177' - 1 5/8" BRIDGE NO. 06577<br/>40' - 0" CLEAR ROADWAY<br/>(POLYMER OVERLAY)</p>          | <p>52 HWY. 62, SEC. 9<br/>LOG MILE 9.969 BR. END<br/>OVER FALLEN ASH CREEK<br/>274' - 2 1/2" BRIDGE NO. 06058<br/>44' - 0" CLEAR ROADWAY<br/>(POLYMER OVERLAY)</p> | <p>59 HWY. 23, SEC. 8<br/>LOG MILE 3.369 BR. END<br/>OVER FLEMING CREEK<br/>242' - 2 1/4" BRIDGE NO. 06512<br/>36' - 0" CLEAR ROADWAY<br/>(POLYMER OVERLAY)</p>    |   |
| <p>39 HWY. 412, SEC. 1<br/>LOG MILE 8.175 BR. END<br/>OVER ILLINOIS RIVER<br/>1378' - 6 1/4" BRIDGE NO. B6476<br/>40' - 0" CLEAR ROADWAY<br/>(POLYMER OVERLAY)</p>  | <p>46 HWY. 412, SEC. 5<br/>LOG MILE 4.348 BR. END<br/>OVER DRY FORK<br/>105' - 0" BRIDGE NO. 06578<br/>40' - 0" CLEAR ROADWAY<br/>(POLYMER OVERLAY)</p>              | <p>53 HWY. 62, SEC. 9<br/>LOG MILE 10.355 BR. END<br/>OVER WHITE RIVER<br/>1382' - 2 3/16" BRIDGE NO. 06059<br/>44' - 0" CLEAR ROADWAY<br/>(POLYMER OVERLAY)</p>   | <p>60 HWY. 23, SEC. 8<br/>LOG MILE 4.144 BR. END<br/>OVER WHITE RIVER<br/>327' - 11 3/8" BRIDGE NO. 06370<br/>36' - 0" CLEAR ROADWAY<br/>(POLYMER OVERLAY)</p>     |   |
| <p>40 HWY. 412, SEC. 1<br/>LOG MILE 4.055 BR. END<br/>OVER PEDRO CREEK<br/>237' - 6" BRIDGE NO. A6477<br/>40' - 0" CLEAR ROADWAY<br/>(POLYMER OVERLAY)</p>          | <p>47 HWY. 62, SEC. 6<br/>LOG MILE 0.915 BR. END<br/>OVER LONG CREEK<br/>337' - 1 3/8" BRIDGE NO. 06398<br/>68' - 0" CLEAR ROADWAY<br/>(POLYMER OVERLAY)</p>         | <p>54 HWY. 5, SEC. 18<br/>LOG MILE 18.159 BR. END<br/>OVER US 62/412<br/>186' - 1 5/8" BRIDGE NO. 05930<br/>40' - 0" CLEAR ROADWAY<br/>(POLYMER OVERLAY)</p>       | <p>61 HWY. 23, SEC. 8<br/>LOG MILE 12.892 BR. END<br/>OVER WAR EAGLE CREEK<br/>190' - 2 5/8" BRIDGE NO. 06798<br/>36' - 0" CLEAR ROADWAY<br/>(POLYMER OVERLAY)</p> |   |
| <p>41 HWY. 412, SEC. 1<br/>LOG MILE 9.612 BR. END<br/>OVER PEDRO CREEK<br/>237' - 6" BRIDGE NO. B6477<br/>40' - 0" CLEAR ROADWAY<br/>(POLYMER OVERLAY)</p>          | <p>48 HWY. 62, SEC. 6X<br/>LOG MILE 0.495 BR. END<br/>OVER US 65<br/>272' - 9 5/8" BRIDGE NO. 06683<br/>25' - 0" CLEAR ROADWAY<br/>(POLYMER OVERLAY)</p>             | <p>55 HWY. 62, SEC. 11<br/>LOG MILE 8.517 BR. END<br/>OVER NORFOLK LAKE<br/>3460' - 0" BRIDGE NO. 05770<br/>44' - 0" CLEAR ROADWAY<br/>(POLYMER OVERLAY)</p>       | <p>62 HWY. 23, SEC. 8<br/>LOG MILE 15.781 BR. END<br/>OVER KECKS CREEK<br/>149' - 7 3/16" BRIDGE NO. 06407<br/>36' - 0" CLEAR ROADWAY<br/>(POLYMER OVERLAY)</p>    |   |
| <p>42 HWY. 412, SEC. 1<br/>LOG MILE 2.103 BR. END<br/>OVER ILLINOIS RIVER<br/>1343' - 6 7/16" BRIDGE NO. A6478<br/>40' - 0" CLEAR ROADWAY<br/>(POLYMER OVERLAY)</p> | <p>49 HWY. 65, SEC. 2<br/>LOG MILE 3.601 BR. END<br/>OVER BRUSH CREEK<br/>117' - 5 5/8" BRIDGE NO. 06586<br/>52' - 0" CLEAR ROADWAY<br/>(POLYMER OVERLAY)</p>        | <p>56 HWY. 101, SEC. 1<br/>LOG MILE 9.045 BR. END<br/>OVER NORFOLK LAKE<br/>2880' - 0" BRIDGE NO. 05769<br/>32' - 0" CLEAR ROADWAY<br/>(POLYMER OVERLAY)</p>       | <p>63 HWY. 23, SEC. 8<br/>LOG MILE 17.548 BR. END<br/>OVER SEALS CREEK<br/>116' - 1" BRIDGE NO. 06408<br/>36' - 0" CLEAR ROADWAY<br/>(POLYMER OVERLAY)</p>         |   |

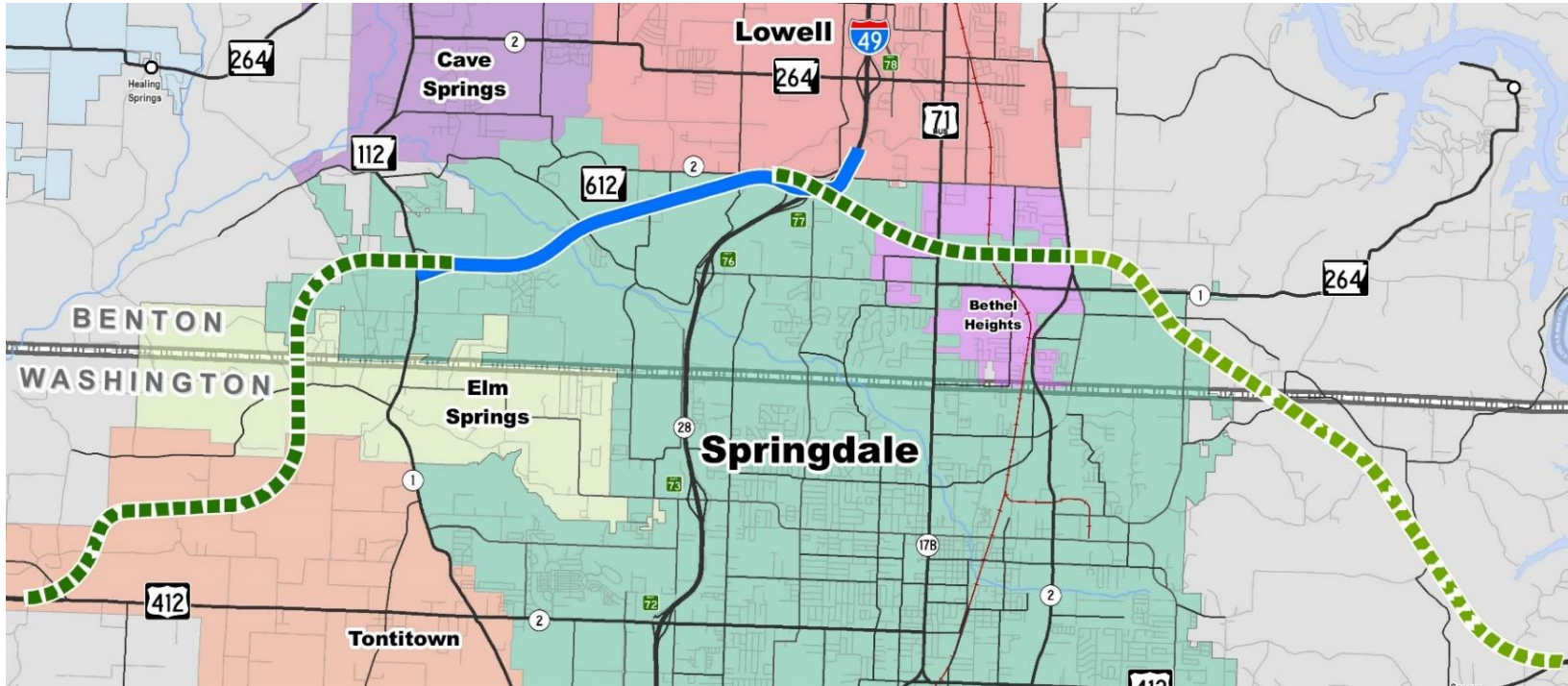
I:\projects\02408\02408.dwg - Bridge Data - 4/28/2022 10:00 AM  
User: jgunn  
Title: Bridge Data  
Project: Boone County Projects  
Revision: 1  
Description: Bridge Data  
Drawn by: jgunn  
Checked by: jgunn  
Reviewed by: jgunn  
Date: 4/28/2022

BRIDGE DATA



# Springdale Bypass

## BENTON & WASHINGTON COUNTIES



### Completed

1 Project  
4 Miles  
\$101 Million

### Scheduled

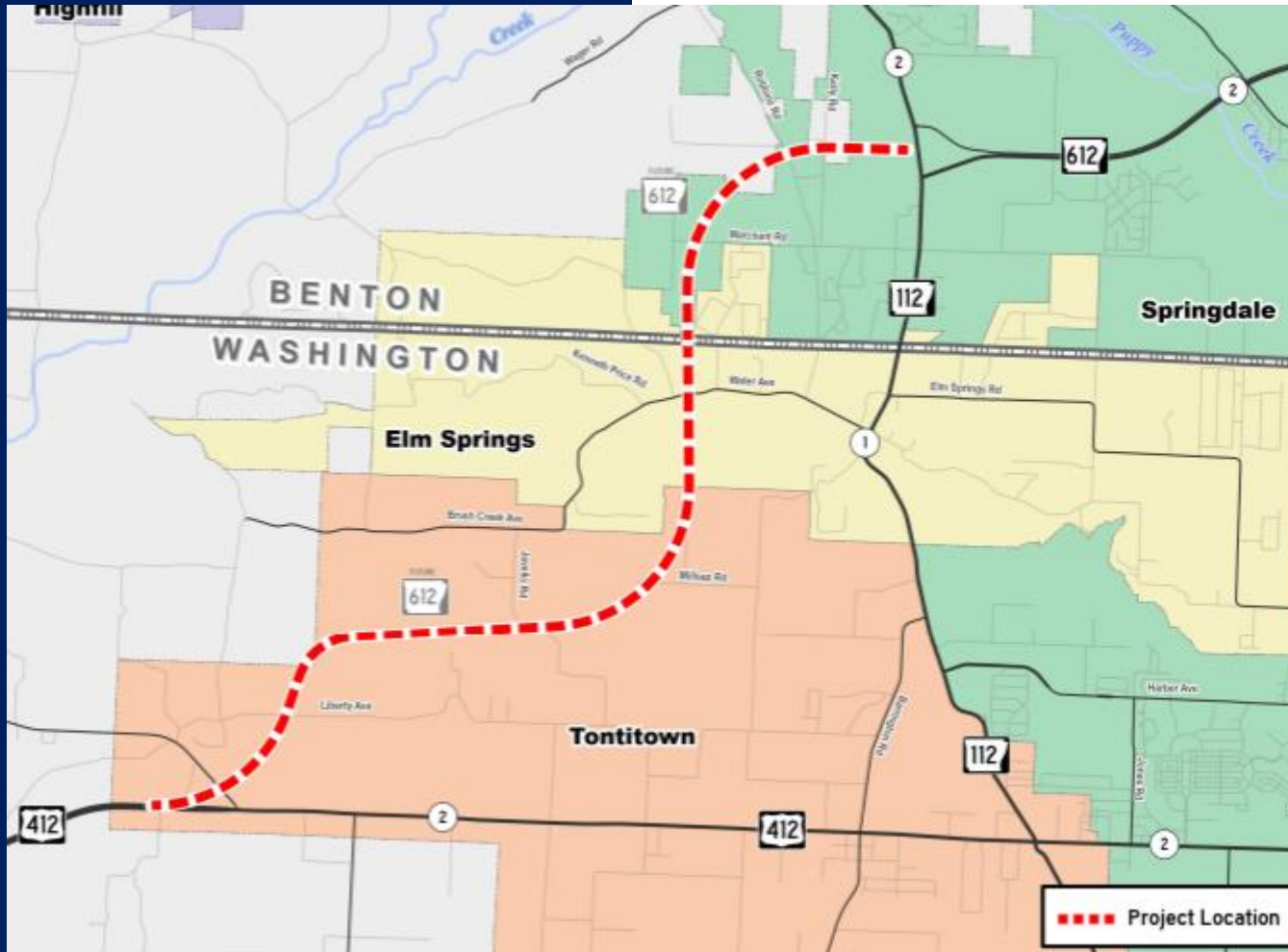
2 Projects  
10 Miles  
\$250-300 Million

### Programmed

1 Project  
7 Miles  
\$100-125 Million

## Springdale Bypass

# Highway 412 – Highway 112 **BENTON & WASHINGTON COUNTIES**

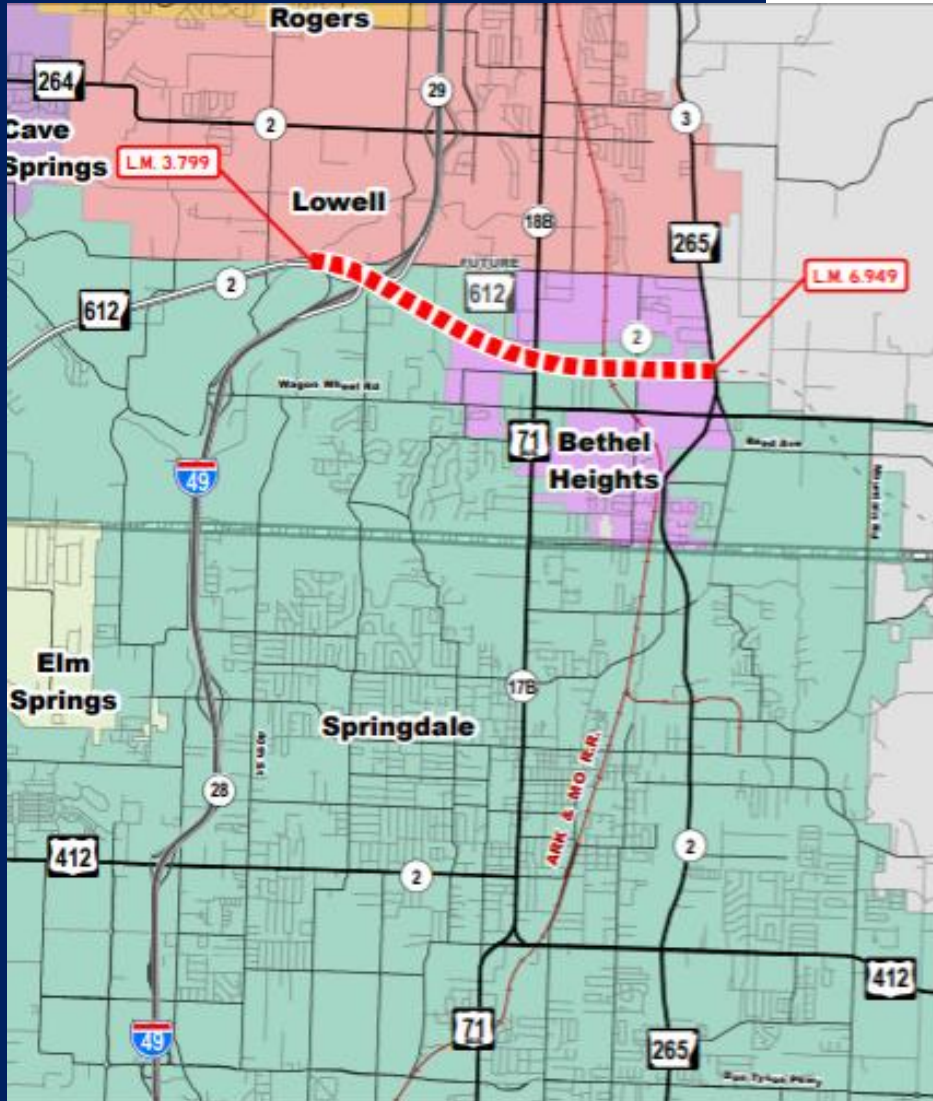


- New Location and Interchange
- 7 Miles
- \$150-200 Million
- Advertised for November 2023 Letting



## Springdale Bypass

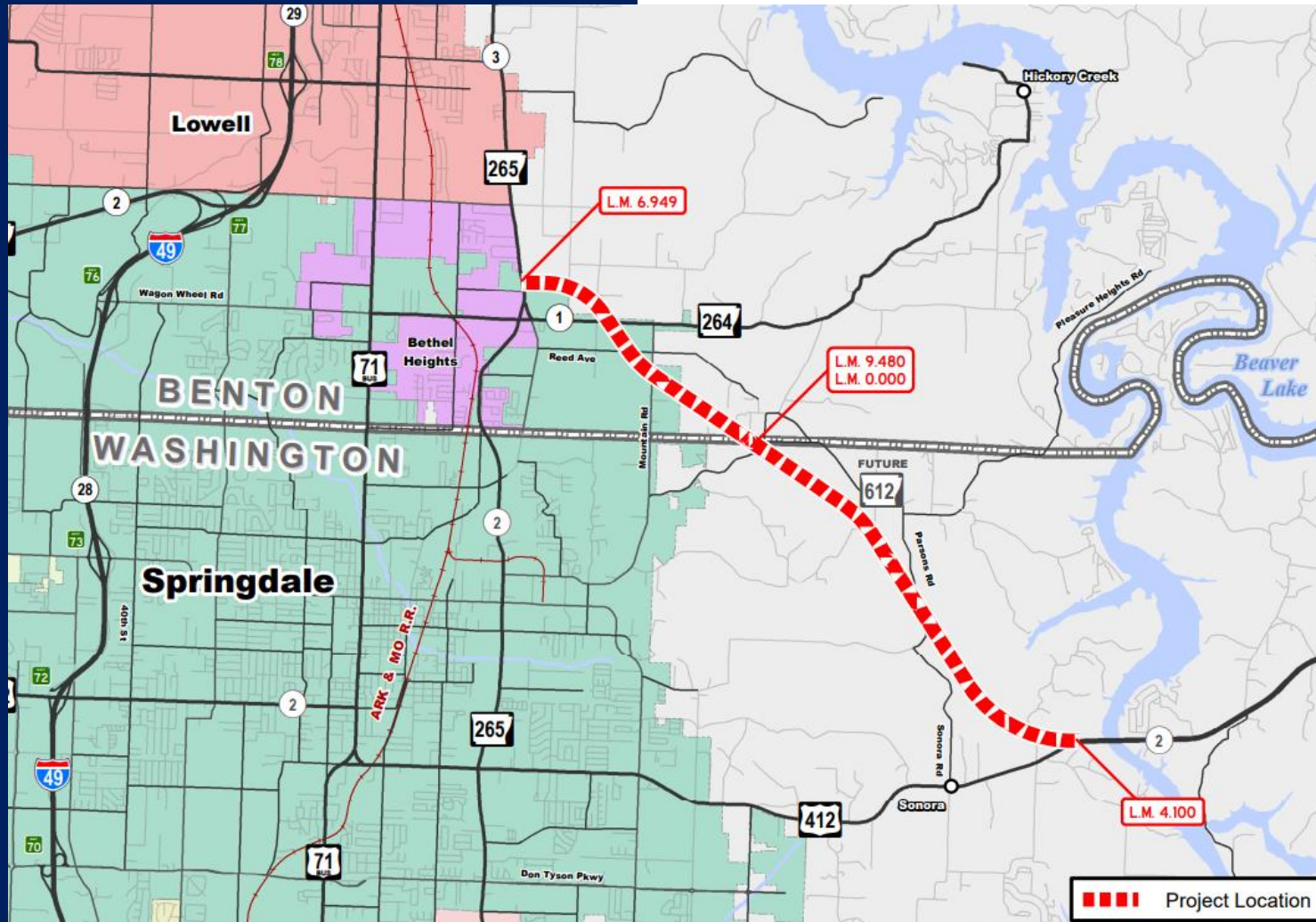
# Interstate 49 – Highway 265 **BENTON COUNTY**



- New Location
- 3 Miles
- \$50-100 Million
- Scheduled Early 2025

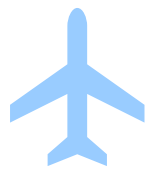
## Springdale Bypass

# Highway 265 – Highway 412 **BENTON & WASHINGTON COUNTIES**



- New Location
- 7 Miles
- \$100-125 Million
- Project Development Phase

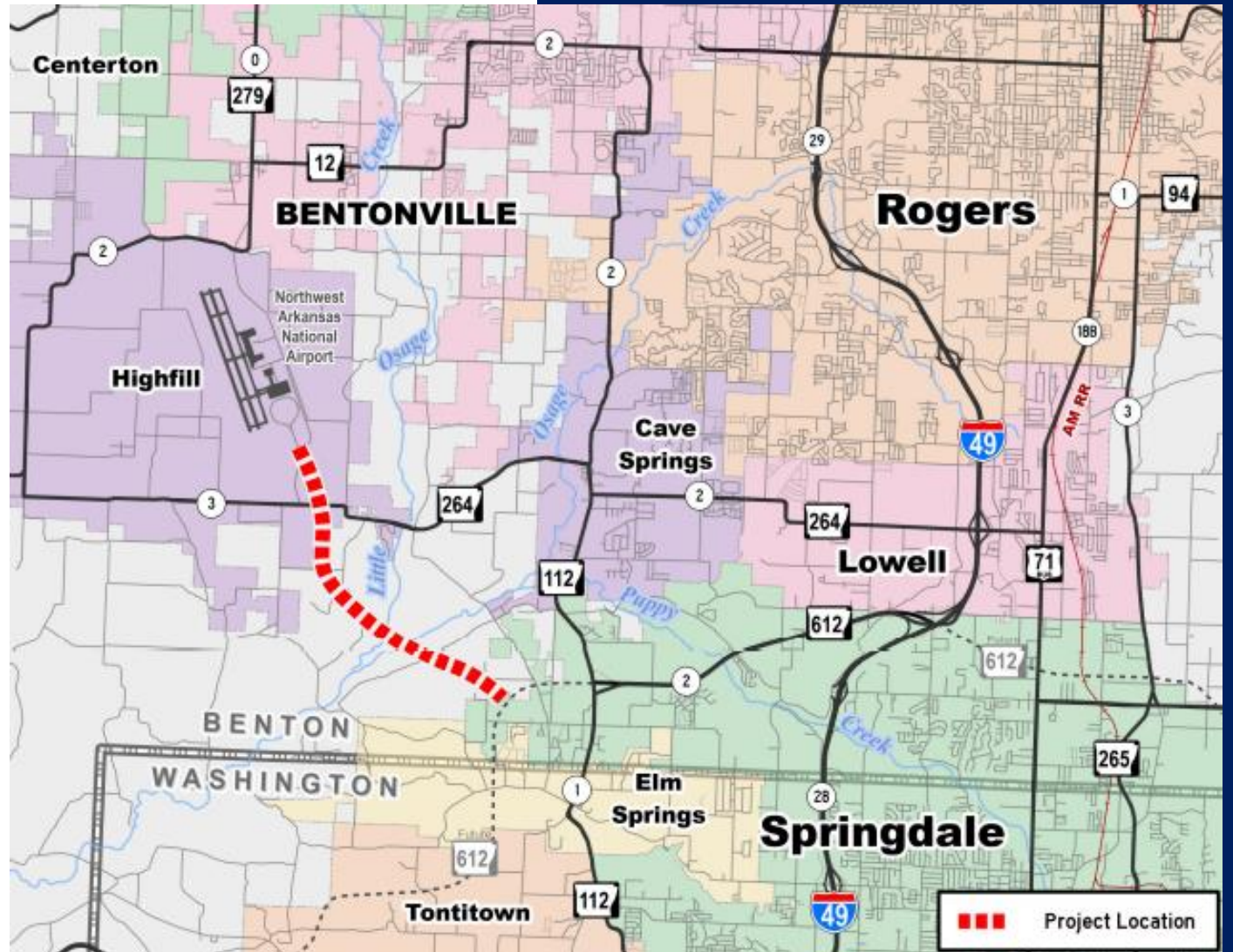




# XNA Connector

## BENTON COUNTY

- New Road
- 4 Miles
- \$50-75 Million
- Scheduled for 2024





# BIPARTISAN INFRASTRUCTURE LAW



FHWA Home / Bipartisan Infrastructure Law

Home

Overview

Funding

Assistance / Local Support

Fact Sheets

Guidance

On November 15, 2021, President Biden signed the [Infrastructure Investment and Jobs Act \(IIJA\) \(Public Law 117-58, also known as the "Bipartisan Infrastructure Law"\)](#) into law. The Bipartisan Infrastructure Law is the largest long-term investment in our infrastructure and economy in our Nation's history. It provides \$550 billion over fiscal years 2022 through 2026 in new Federal investment in infrastructure, including in roads, bridges, and mass transit, water infrastructure, resilience, and broadband.

This website will serve as your one-stop shop for FHWA's implementation of the Bipartisan Infrastructure Law, including everything from fact sheets and funding notices to guidance, regulations, and presentations.

The FHWA will continue to add new information to this page over the weeks and months to come.

Subscribe for Updates



**Highway Safety Improvement Program Guidance**

Pause

Previous

Next

1 2 3 4 5 6



**Repair and rebuild our roads and bridges with a focus on climate change mitigation, resilience, equity, and safety for all users, including cyclists and pedestrians.** In Arkansas there are 663 bridges and over 6,711 miles of highway in poor condition. Since 2011, commute times have increased by 3% in Arkansas, and on average, each driver pays \$671 per year in costs due to driving on roads in need of repair. The Bipartisan Infrastructure Law is the single largest dedicated bridge investment since the construction of the interstate highway system. **Based on formula funding alone, Arkansas would expect to receive approximately \$3.8 billion over five years in Federal highway formula funding for highways and bridges.** On an average annual basis, this is about 32% more than the State's Federal-aid highway formula funding under current law (1). Arkansas can also compete for the \$12.5 billion Bridge Investment Program for economically significant bridges and \$15 billion of national funding in the law dedicated to megaprojects that will deliver substantial economic benefits to communities. Arkansas can also expect to receive approximately \$87 million over five years in formula funding to reduce transportation-related emissions, in addition to about \$99 million over five years to increase the resilience of its transportation system (2). States may also apply federal aid dollars towards climate resilience and safety projects.

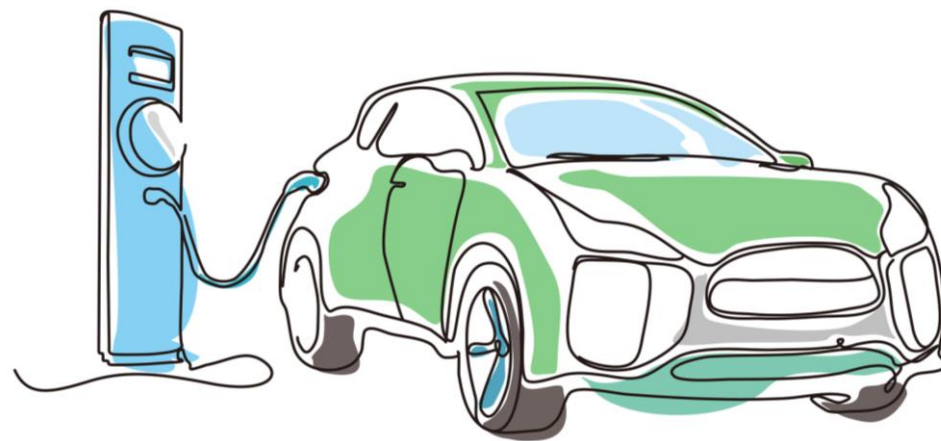
# NEVI in Arkansas

1<sup>st</sup>

Fully build out 100% of our Interstates & Electric Vehicle Designated Alternative Fuel Corridors

2<sup>nd</sup>

Plan to use remaining funds to extend the EV charging network to other routes of significance





**Q: What does “fully built out” to NEVI Program Standards mean?**

**A:** To be considered “fully built out,” for the NEVI Program, Interstate Highways & AFCs must have:

- Publicly accessibly DC Fast Charging Stations every 50 miles within 1 travel mile of the interchanges
- At least Four 150kW DC Fast Chargers
- Ports must be Combined Charging System (CCS1)
- Must simultaneously DC fast charge four EVs at 150kW

# Levels of EV Charging



**Level 1**

**VOLTAGE**

120V 1–Phase AC

**AMPS**

12–16 Amps

**CHARGING LOADS**

1.4 to 1.9 KW

**CHARGING TIME**

3–5 Miles of Range Per Hour

**PRICE PER MILE**

2¢–6¢ per mile



**Level 2**

**VOLTAGE**

208V or 240V 1–Phase AC

**AMPS**

12–80 Amps (Typ. 32 Amps)

**CHARGING LOADS**

2.5 to 19.2 KW (Typ. 7 KW)

**CHARGING TIME**

10–20 Miles of Range Per Hour

**PRICE PER MILE**

2¢–6¢ per mile



**Level 3 (DC Fast Charge)**

**VOLTAGE**

208V or 480V 3–Phase AC

**AMPS**

<125 Amps (Typ. 60 Amps)

**CHARGING LOADS**

<90 KW (Typ. 50 KW)

**CHARGING TIME**

80% Charge in 20–30 Minutes

**PRICE PER MILE**

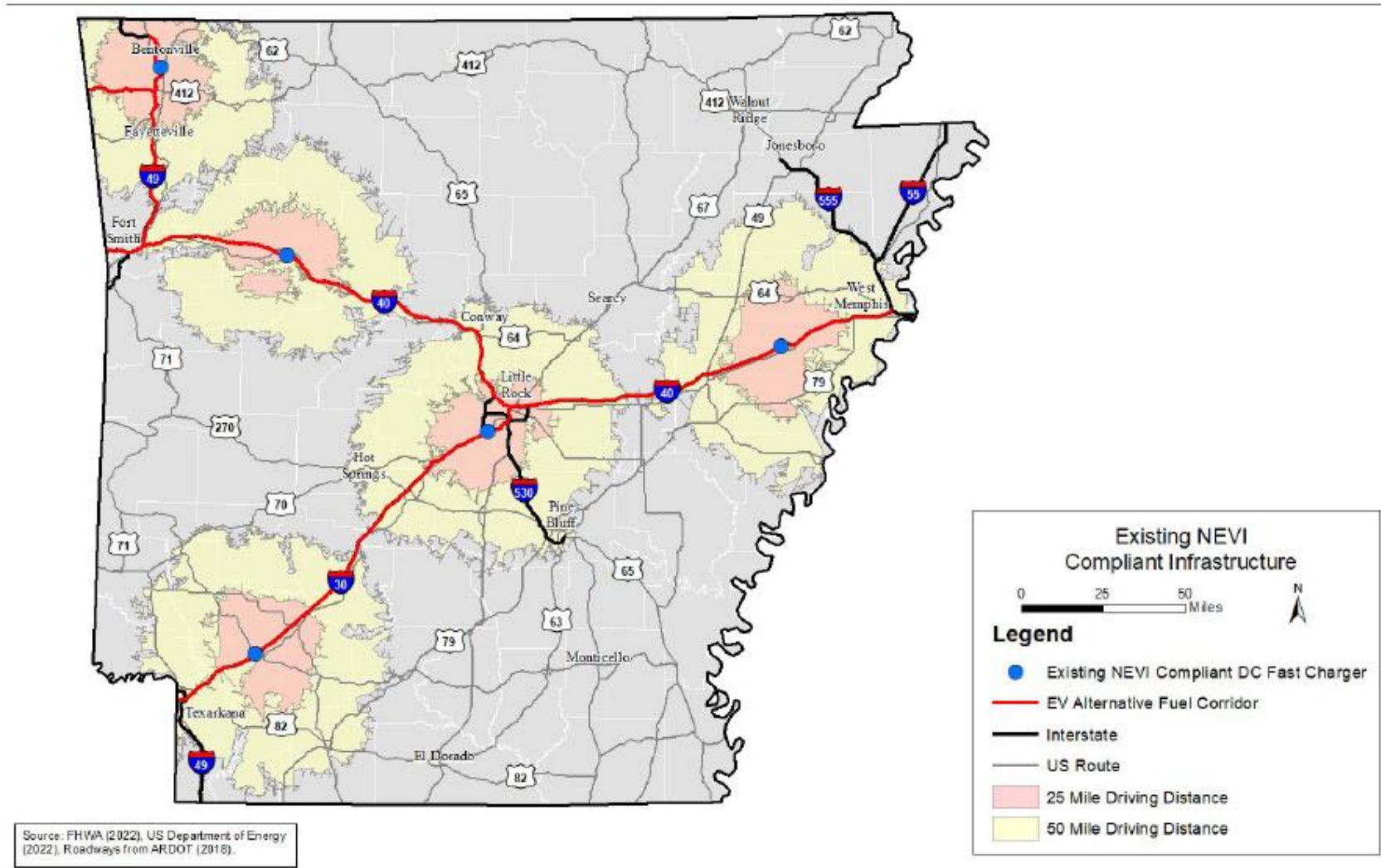
12¢–25¢ per mile



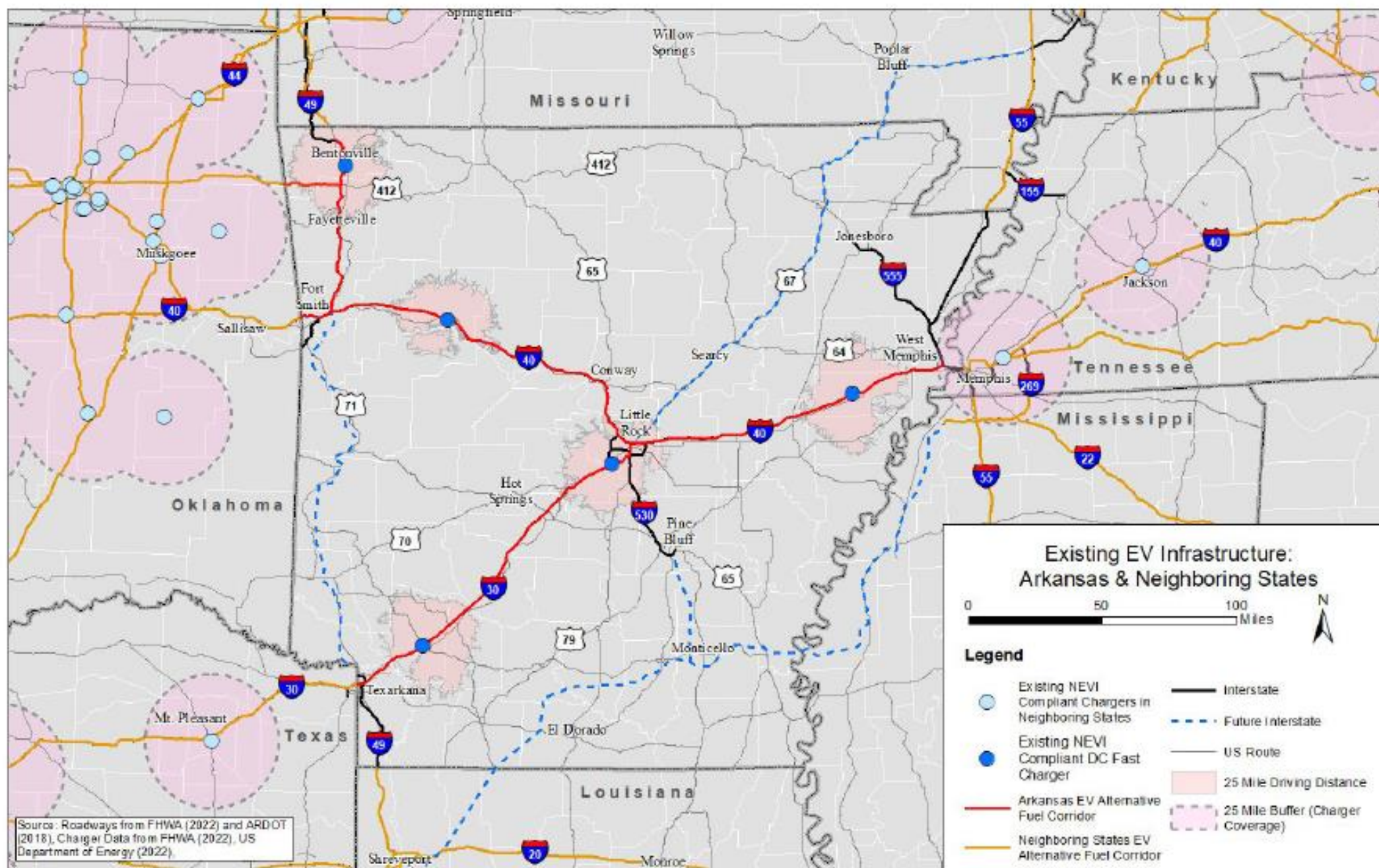
## Arkansas Existing EV Infrastructure

This plan is designed to build on Arkansas' current network of AFCs and EVSE charging stations (**Figure 2**). Existing EVSE Stations: 172 Publicly available charging station locations, 417 AC Power Level 2 EVSE charging station ports, 72 DC Power Fast Charging station ports, five NEVI compliant charging station locations.

**Figure 2:** Arkansas Interstate Highways & FHWA EV AFCs

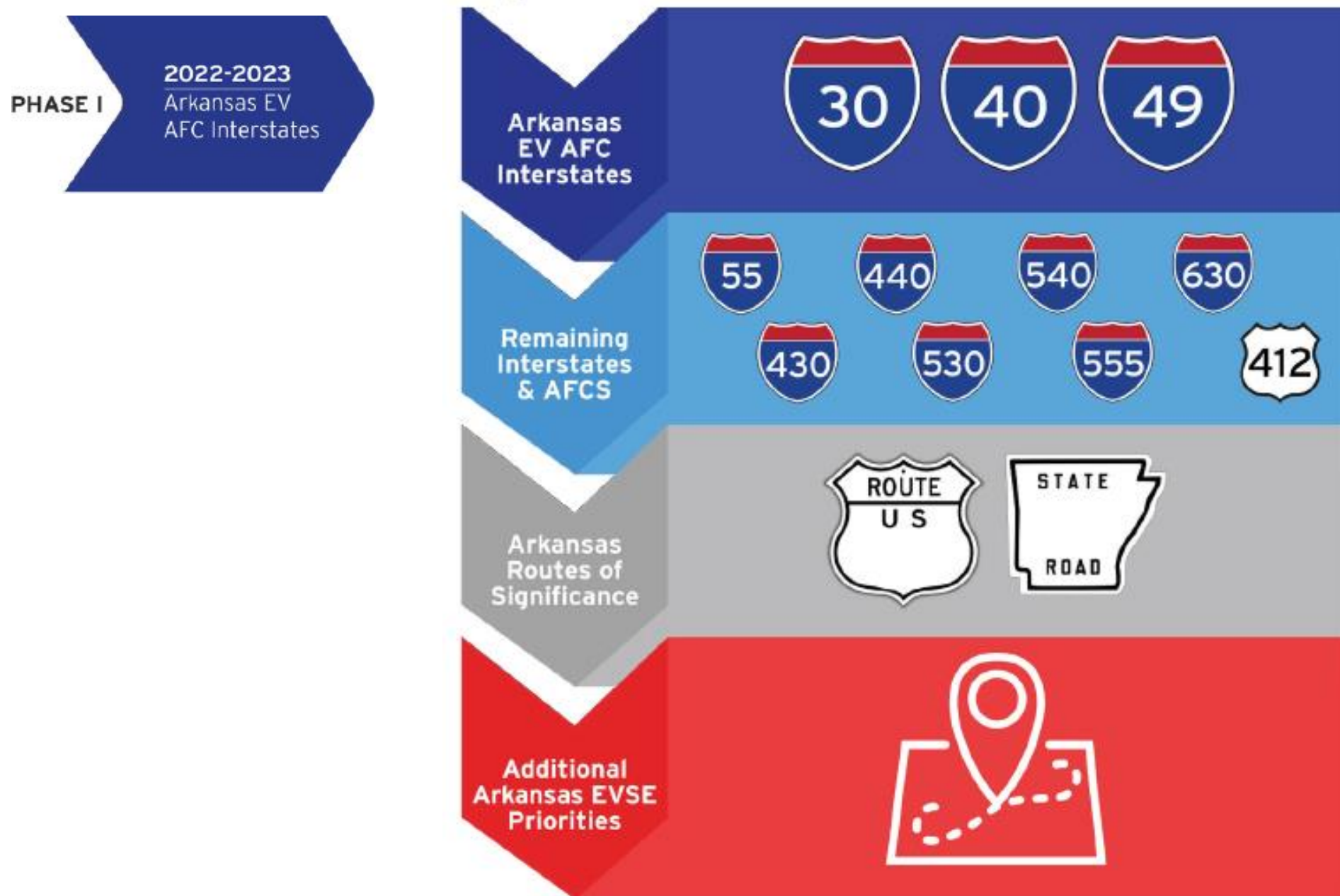


**Figure 6: Arkansas Neighboring State AFCs and Existing NEVI Compliant EV Charging Stations**



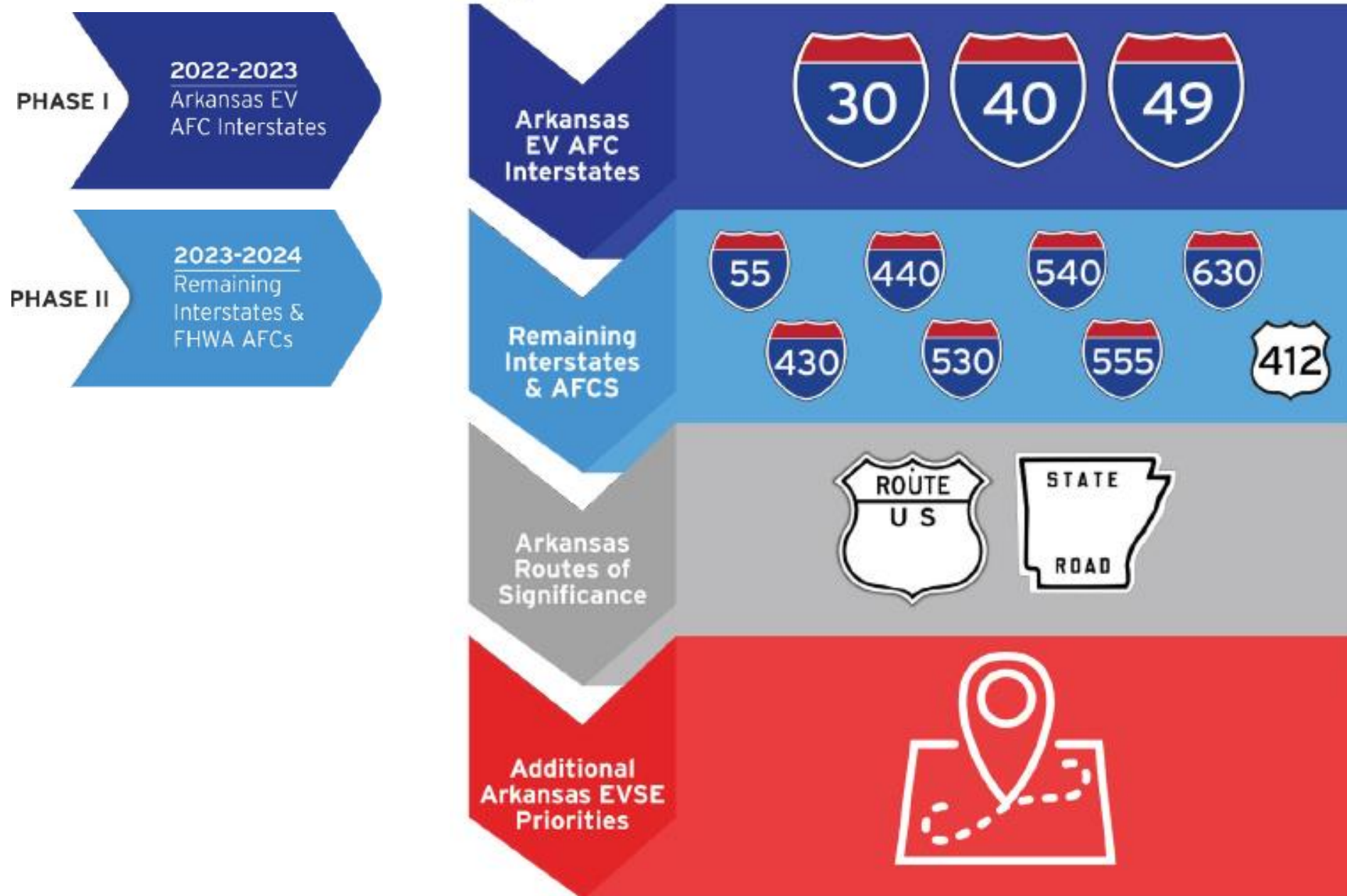


**Figure 10: Arkansas NEVI Build Out Phases and Priorities**



Source: ARDOT (July 2022)

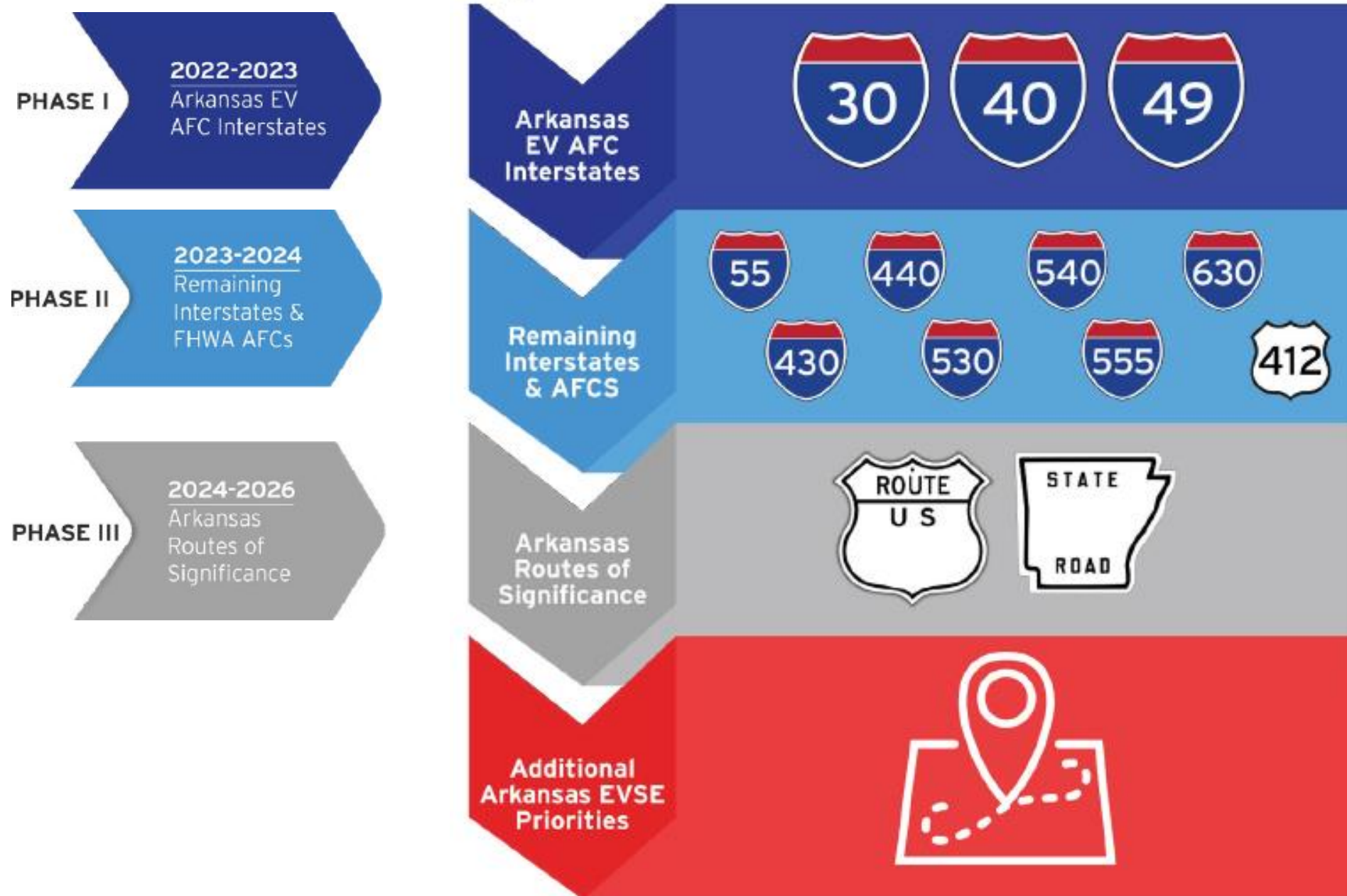
**Figure 10: Arkansas NEVI Build Out Phases and Priorities**



Source: ARDOT (July 2022)

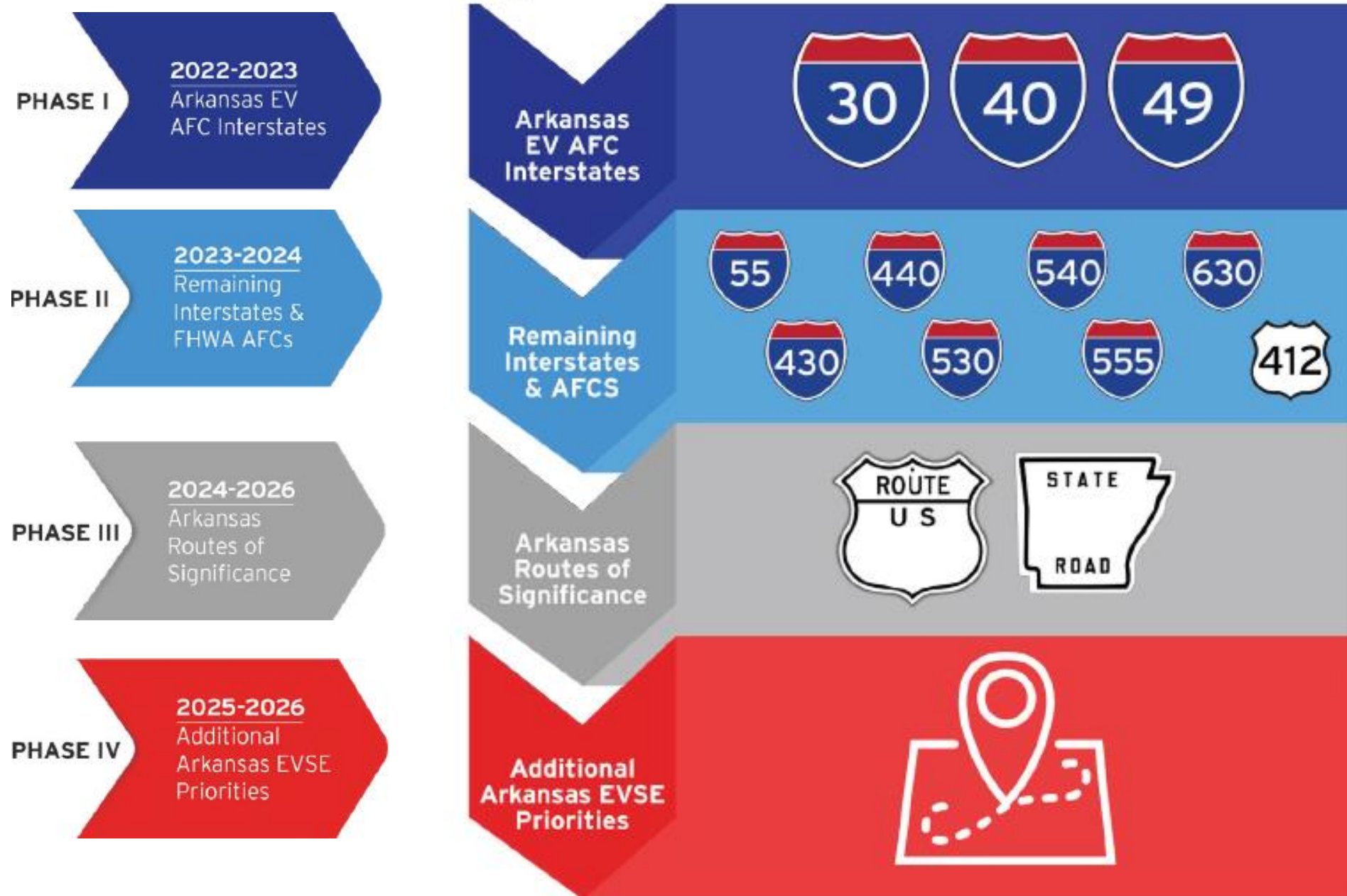


**Figure 10: Arkansas NEVI Build Out Phases and Priorities**



Source: ARDOT (July 2022)

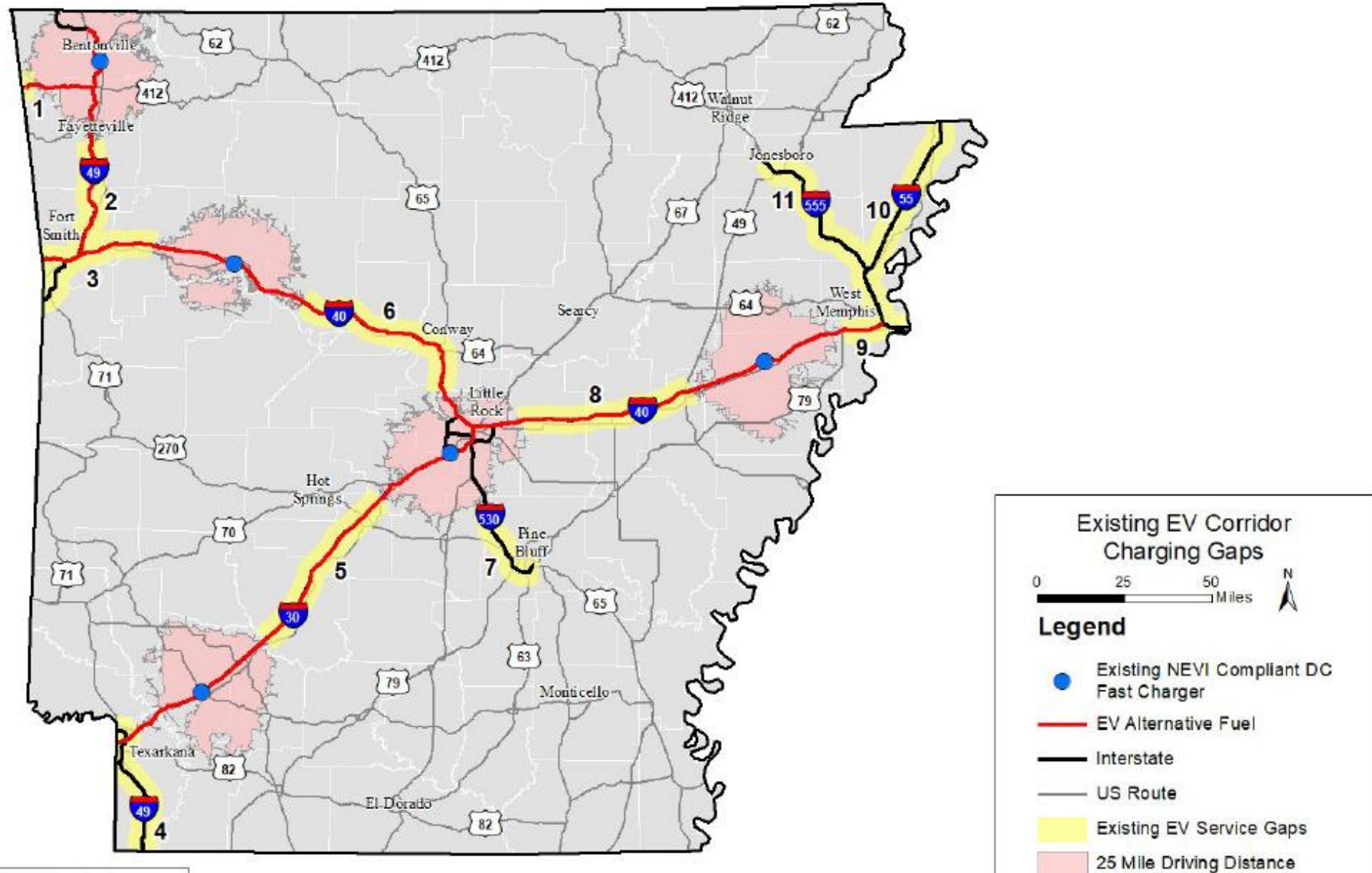
**Figure 10: Arkansas NEVI Build Out Phases and Priorities**



Source: ARDOT (July 2022)



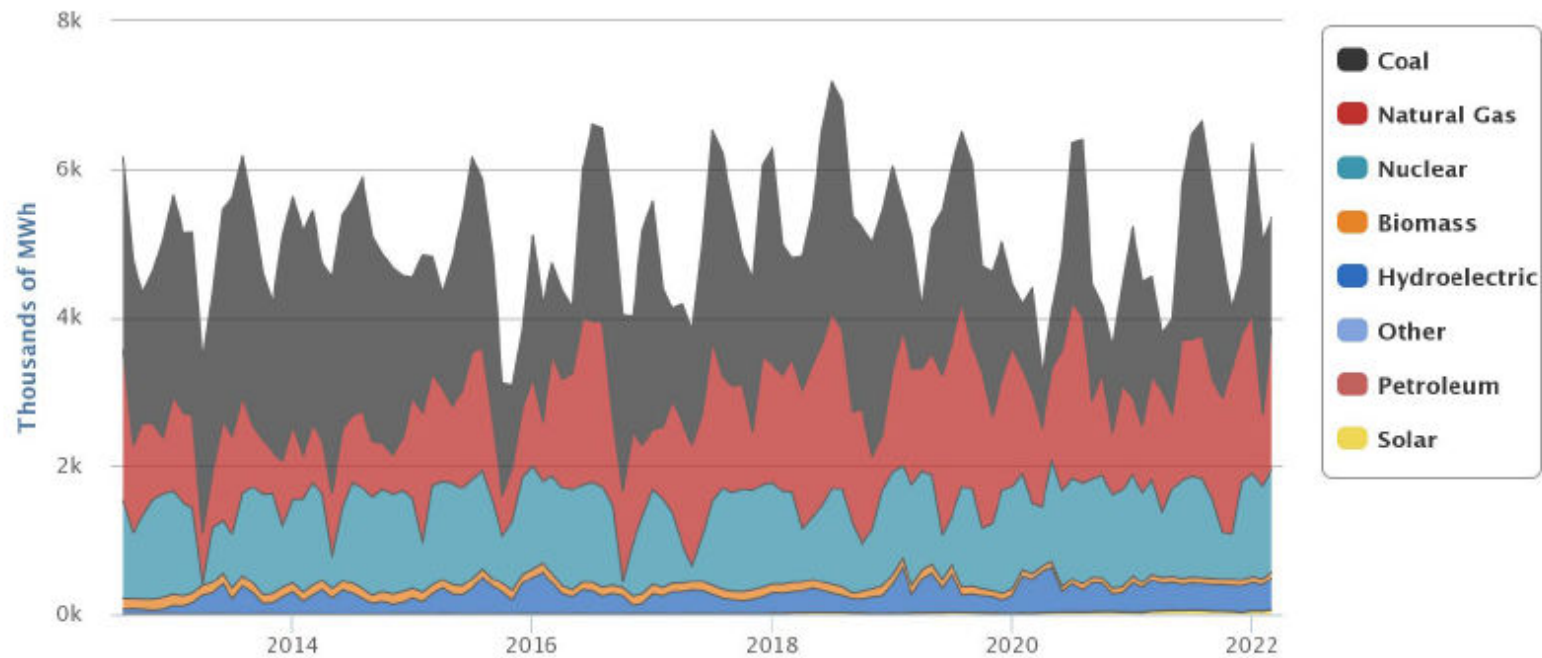
Figure 31: NEVI Compliance Gap Segments Identified on Arkansas Interstates & AFCs



Source: FHWA (2022), US Department of Energy (2022), Roadways from ARDOT (2018).

Coal Fired	35% (4)
Natural Gas	32% (5)
Nuclear	22% (1)
All Others	11%

Figure 24: Arkansas Net Annual Electric Generation by Fuel Source



Source: US Energy Information Administration



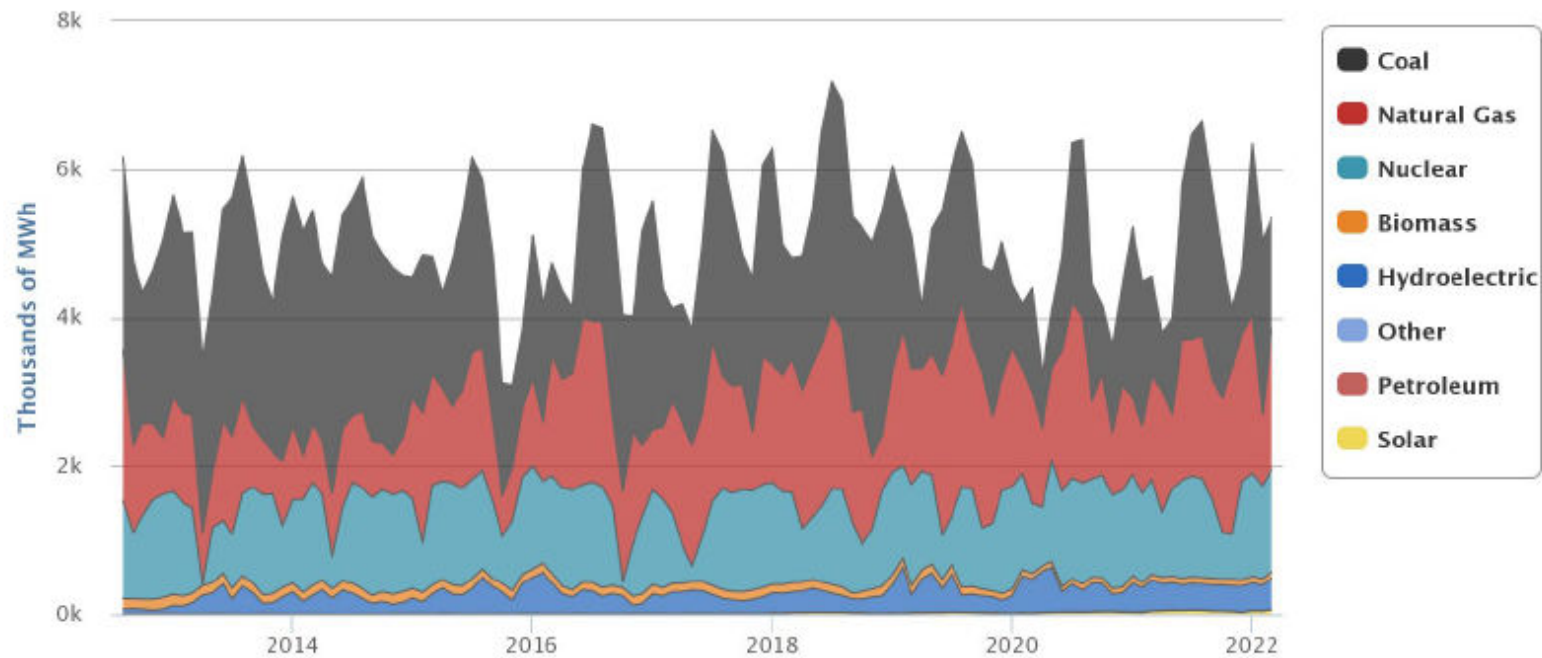
# Largest Generating Station

## 2,000 MegaWatt

### Union Power Station

### Natural Gas

Figure 24: Arkansas Net Annual Electric Generation by Fuel Source



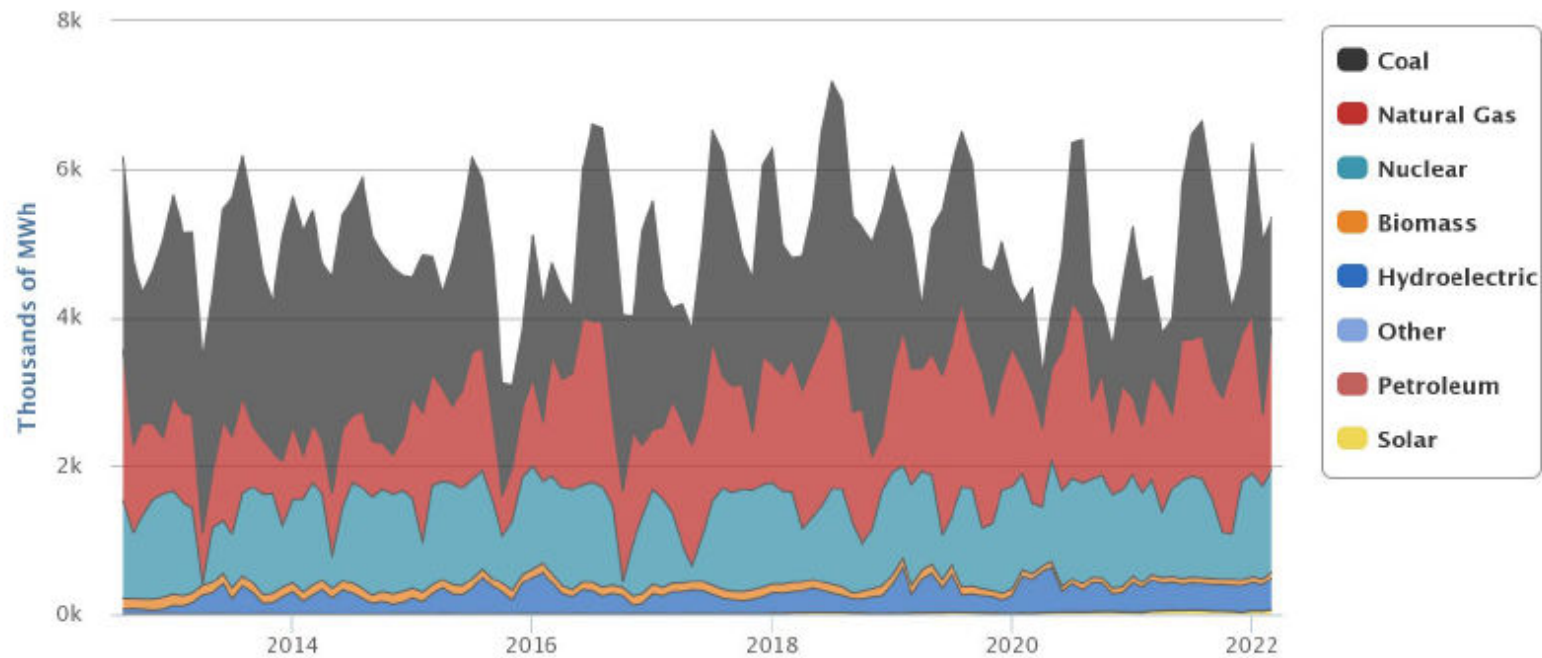
Source: US Energy Information Administration

# 2<sup>nd</sup> Largest Generating Station

## 1,800 MegaWatt

### Nuclear One at Russellville

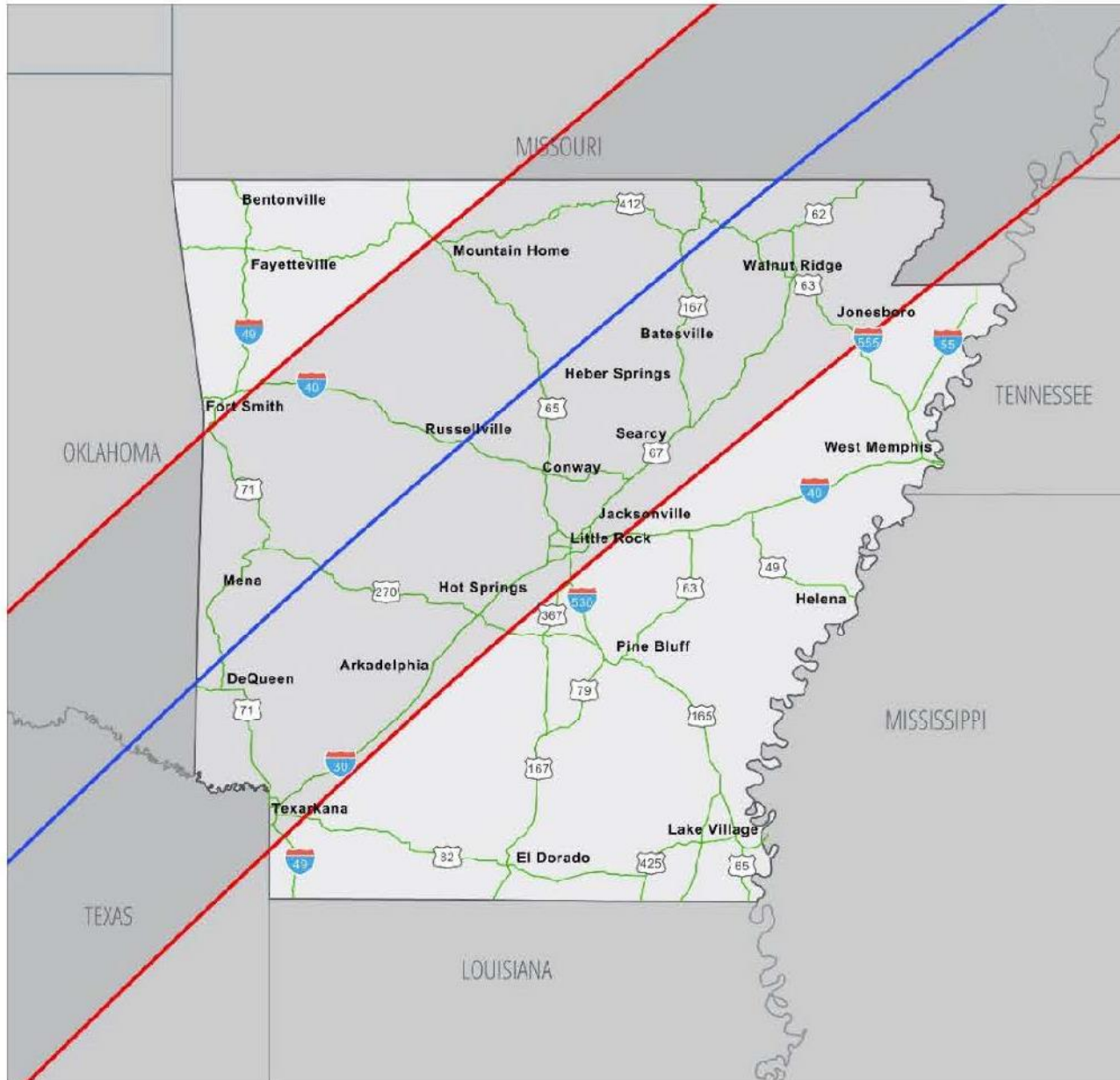
Figure 24: Arkansas Net Annual Electric Generation by Fuel Source



Source: US Energy Information Administration



### Figure 1: 2024 Solar Eclipse Path of Totality



- April 8<sup>th</sup>, 2024
- 1.5 Million Out of State Visitors Expected
- ½ million in State to Relocate to Path
- Working with Local Agencies for Contingency Plan for Moving Viewers in and Around State



# Boone County Leadership Institute

Stacy Burge, P.E.  
District 9 Construction Engineer

