

### General Info

to **disable** Q & A notifications for this solicitation.

Digital ID required

#### Deadline

**07/18/2023 11:00 AM CDT**

#### Advertised

07/05/2023 10:50 AM CDT

#### Business Name

Arkansas Department of Transportation - Equipment and Procurement

#### Location(s)

- Crittenden, Arkansas
- Cross, Arkansas
- Lee, Arkansas
- Monroe, Arkansas
- Phillips, Arkansas
- St. Francis, Arkansas
- Woodruff, Arkansas



Esri, HERE, Garmin, FAO, NOAA, USGS, EPA, NPS | ... Powered by Esri

#### Number

H-24-215H

**Description**

Guard Rail Maintenance  
FOB: District 1 - Wynne, AR

**Allows zero unit prices and labor**

Yes

**Allows negative unit prices and labor**

Yes

**Allows multiple bids per solicitation**

No

**Q & A**

---

**Deadline**

Same as solicitation deadline.

**Remarks**

---

**ATTACHMENT LIST**

---

CONTRACT AND GRANT DISCLOSURE AND CERTIFICATION FORM.pdf (157 KB)  
Download, complete, and upload in the Required ...

---

Guard Rail Drawings Specs 2018.pdf (1.58 MB)

---

Guard Rail Specifications District 1 - 2023.pdf (216 KB)

---

Guardrail Delineator Spec 2022.pdf (123 KB)

---

Standard Bid Conditions Revised 2022.pdf (156 KB)

---

**BID INVITATION**

---

Electronic Sealed bids for furnishing the commodities and/or services described below subject to the Standard Bid Conditions of this Bid Invitation will be publicly opened at the above-noted bid opening date and time at the ARDOT Equipment and Procurement Divison located at 11302 West Baseline Road, Little Rock, AR 72209. Bids must be submitted on this form, with attachments when appropriate, or bids will be rejected.

In compliance with this Bid Invitation and subject to all the Conditions thereof, the undersigned offers and agrees to furnish any and all items upon which prices are quoted, at the price set opposite each item.

I

**Company Name:\***

**Name:\***

**Address:\***

**Title:\***

**Federal Tax ID or Social Security No:\***

**Phone:\***

**Fax:**

**E-mail:\***

**Signature:\***

## Guard Rail Maintenance

Contract for furnishing to the Arkansas Department of Transportation, District One, requirements of Guard Rail Maintenance at pricing set forth on attached Bid Form in accordance with attached Specifications. Contract shall be for a 1 year period from Date of Award thru **July 31, 2024**, or to a maximum amount of \$200,000.00, whichever comes first, with option to renew upon mutual agreement by both parties.

All bidders should complete and return the Eligible Bidder Certification (Attachment A) and Disclosure Form (see Page 2 of Standard Bid Conditions – Item 18) and Restriction of Boycott of Israel Certification issued with this bid. A current copy of the DFA Illegal Immigrant Contractor Disclosure Certification (see Page 1 of Standard Bid Conditions – Item 17) should also be submitted with bid. These forms are kept on file and remain current for one year from date of submission. Forms do not need to be submitted again, during that time, unless there is a status change.

Bid Bond in the amount of \$500.00 required of all bidders at time of bid opening or bid will be rejected. **Personal and company checks are not acceptable as Bid Bonds.** See Condition 4 on page 1 of Standard Bid Conditions. Performance Bond in the amount of \$5,000.00 will be required of successful bidder prior to providing goods/services. **Personal and company checks are not acceptable as Performance Bonds.** See Condition 4 on page 1 of Standard Bid Conditions.

**Surety Bonds may be submitted electronically through the online bidding process. If submitting a Surety Bond that is not compatible with Surety 2000 and Tinubu, your company still may do so. Other Surety Companies will still be accepted but must be received in Equipment and Procurement before the time of bid opening at 11302 West Baseline Road, Little Rock, AR 72209 prior to the designated time of the bid opening. This includes Cashier's checks, Certified checks, or Money orders submitted as bid bonds must be physically received by Equipment & Procurement.**

Bids and Specifications are available on-line by going to the ARDOT Web Site – [www.ardot.gov](http://www.ardot.gov) and clicking on "Commodities and Services Bids/Contracts Information". Tabulations will also be available at this site after award of bid/contract. If you have any questions, call this office at 501-569-2667.

## BID FORM - INSTRUCTIONS

---

\*Items with single \* notation will be supplied by the Department.

\*\*Item 58 must be for Quadguard and Quadguard II or Equivalent. Removal & Disposal will be paid for under Item 15. Furnishing & placing anchor bolts, splicing hardware, assembly hardware, and/or attachment hardware will not be measured and paid for directly but will be considered included in the prices bid for the various items of the Contract.

\*\*\*Items 59 through 67 must be for the SoftStop System (8 Blocks) MASH Test Level 3. Removal & Disposal will be paid for under Item 15. Furnishing & placing anchor bolts, splicing hardware, assembly hardware, and/or attachment hardware will not be measured and paid for directly but will be considered included in the prices bid for the various items of the Contract.

\*\*\*\*Item 68 must be for a Smart Cushion crash-cushion attenuating terminal or equivalent. Removal & Disposal will be paid for under Item 15. Furnishing & placing anchor bolts, splicing hardware, assembly hardware, and/or attachment hardware will not be measured and paid for directly but will be considered included in the prices bid for the various items of the Contract.

## BID FORM

Item No.	Quantity	Description	Unit Price
1.0	75.00	Guardrail (Section 1)	
2.0	2,300.00	Guardrail (Section 2)	
3.0	1.00	Guardrail (Section 3)	
4.0	400.00	Guardrail (Section 4)	
5.0	21.00	Guardrail Back-up Plate	
6.0	125.00	Guardrail Line Posts (Steel)	
*7.0	29.00	Install Furnished Guardrail Line Posts(Concrete))	
8.0	1.00	Guardrail Line Posts(Wood)	
9.0	104.00	Guardrail Spacer Blocks (Steel)	
*10.0	31.00	Install Furnished Guardrail Spacer Blocks (Concrete)	
11.0	43.00	Guardrail Spacer Blocks (Wood)	
12.0	1.00	Terminal Anchor Posts (Type A)	

Item No.	Quantity	Description	Unit Price
13.0	1.00	Terminal Anchor Posts (Type B)	
14.0	1.00	Special End Shoe	
15.0	1.00	Removal & Disposal of Guardrail (Type A)	
16.0	1.00	Removal & Disposal of Guardrail (Type B)	
17.0	1.00	Furnish & Install Guardrail System (Type A)	
18.0	1.00	Furnish & Install Guardrail System (Type B)	
19.0	37.00	Guardrail Terminal Section	
20.0	1.00	Furnish & Install Bridge Connection-Curb	
21.0	1.00	Furnish & Install Bridge Connection-Parapet	
22.0	96.00	Straighten & Align existing Guardrail Posts	
23.0	37.00	Guardrail Terminal (Type 2) Guardrail 12ga.	
24.0	100.00	Steel Tube (6"x8"x54"x3/16")	
25.0	5.00	Soil Plate (18"x24"x1/4")	
26.0	3.00	Wood Posts (5-1/2"x7-1/2"x45")	
27.0	4.00	Wood Posts (6"x8"x6'0")	
28.0	5.00	Wood Posts (5-1/2"x7-1/2"x14")	
29.0	1.00	Pipe Sleeve (2" Std. Pipe x 5-1/2")	
30.0	3.00	Bearing Plate (8"x8"x5/8")	

## ILLEGAL IMMIGRANT CERTIFICATION

---

\*Items with single \* notation will be supplied by the Department.

\*\*Item 58 must be for Quadguard and Quadguard II or Equivalent. Removal & Disposal will be paid for under Item 15. Furnishing & placing anchor bolts, splicing hardware, assembly hardware, and/or attachment hardware will not be measured and paid for directly but will be considered included in the prices bid for the various items of the Contract.

\*\*\*Items 59 through 67 must be for the SoftStop System (8 Blocks) MASH Test Level 3. Removal & Disposal will be paid for under Item 15. Furnishing & placing anchor bolts, splicing hardware, assembly hardware, and/or attachment hardware will not be measured and paid for directly but will be considered included in the prices bid for the various items of the Contract.

\*\*\*\*Item 68 must be for a Smart Cushion crash-cushion attenuating terminal or equivalent. Removal & Disposal will be paid for under Item 15. Furnishing & placing anchor bolts, splicing hardware, assembly hardware, and/or attachment hardware will not be measured and paid for directly but will be considered included in the prices bid for the various items of the Contract.

## BID FORM

Item No.	Quantity	Description	Unit Price
31.0	1.00	Cable Anchor Bracket	
32.0	1.00	Cable Assembly	
33.0	1.00	Offset Strut	
34.0	1.00	Guardrail Extruder	
35.0	1.00	Furnish & Install Terminal System (Type 2)	
36.0	1.00	Guardrail (Thrie Section)	
37.0	1.00	Guardrail (Thrie Transition Section)	
38.0	1.00	Guardrail Connector Plate (Thrie Beam)	
39.0	1.00	Guardrail Spacer Blocks (Plastic)	
40.0	1.00	Guardrail Spacer Blocks (Steel Tube)	
41.0	1.00	Furnish & Install Thrie Beam GR Terminal	
42.0	1.00	Metal Hinged Breakaway Post	

Item No.	Quantity	Description	Unit Price
43.0	8.00	12ga. Slotted Rail	
44.0	8.00	10ga. Slotted Rail	
45.0	6.00	Foundation Tubes	
46.0	2.00	Soil Plate	
47.0	4.00	Nose Plate Rolled Section	
48.0	8.00	Side Plate Ties to Nose	
49.0	12.00	Wood Post #2 thru #6	
50.0	4.00	Wood Post #1	
51.0	8.00	Wood Block @ post #1	
52.0	24.00	Wood Block @ post #2 - #6	
53.0	2.00	Strut Assembly	
54.0	2.00	Spacer Channel	
55.0	2.00	Bent Plate Sleeve	
56.0	4.00	Cable for Anchor Assembly	
57.0	1.00	Buckling Restraint Rod	
**58.0	1.00	Furnish & Install Bridge End Terminal (excluding concrete pad)	
***59.0	1.00	Trinity SoftStop System 50'-9-1/2" (500673B)	
***60.0	1.00	SoftStop Anchor Paddle (15204A)	

## ILLEGAL IMMIGRANT CERTIFICATION

---



\*Items with single \* notation will be supplied by the Department.

\*\*Item 58 must be for Quadguard and Quadguard II or Equivalent. Removal & Disposal will be paid for under Item 15. Furnishing & placing anchor bolts, splicing hardware, assembly hardware, and/or attachment hardware will not be measured and paid for directly but will be considered included in the prices bid for the various items of the Contract.

\*\*\*Items 59 through 67 must be for the SoftStop System (8 Blocks) MASH Test Level 3. Removal & Disposal will be paid for under Item 15. Furnishing & placing anchor bolts, splicing hardware, assembly hardware, and/or attachment hardware will not be measured and paid for directly but will be considered included in the prices bid for the various items of the Contract.

\*\*\*\*Item 68 must be for a Smart Cushion crash-cushion attenuating terminal or equivalent. Removal & Disposal will be paid for under Item 15. Furnishing & placing anchor bolts, splicing hardware, assembly hardware, and/or attachment hardware will not be measured and paid for directly but will be considered included in the prices bid for the various items of the Contract.

## BID FORM

Item No.	Quantity	Description	Unit Price
***61.0	1.00	SoftStop Head (15208A)	
***62.0	1.00	System Anchor Rail (15215G)	
***63.0	1.00	System Rail (w-beam) - (61G)	
***64.0	1.00	System Anchor Post (15000g)	
***65.0	1.00	System Angle Strut (15202G)	
***66.0	1.00	SYTP Post (15203G)	
***67.0	1.00	System Post (533G)	
****68.0	1.00	Furnish & Install Crash-Cushion Attenuating Terminal (unidirectional, direct attachment) (excluding concrete pad)	

## ILLEGAL IMMIGRANT CERTIFICATION

Pursuant to Arkansas Code Annotated § 19-11-105, Contractor(s) **shall** certify with OSP that they do not employ or contract with illegal immigrants.

By signing below, the Contractor agrees and certifies that they do not employ illegal immigrants and will not employ illegal immigrants during the remaining aggregate term of the contract.

### **H-24-215H**

**AASIS Number:**

### **Guard Rail Maintenance**

**Contractor Name:\***

**Contractor Signature:\***

**Date:\***

### **RESTRICTION OF BOYCOTT OF ISRAEL CERTIFICATION**

---

Pursuant to Arkansas Code Annotated § 25-1-503, a public entity **shall not** enter into a contract valued at \$1,000 or greater with a company unless the contract includes a written certification that the person or company is not currently engaged in, and agrees for the duration of the contract not to engage in, a boycott of Israel.

By signing below, the Contractor agrees and certifies that they do not currently boycott Israel and will not boycott Israel during any time in which they are entering into, or while in contract, with any public entity as defined in § 25-1-503.\* If at any time after signing this certification the contractor decides to engage in a boycott of Israel, the contractor must notify the contracting public entity in writing.

If a company does boycott Israel, see Arkansas Code Annotated § 25-1-503.

**Name of public entity:** Arkansas Department of Transportation

### **H-24-215H/Guard Rail Maintenance**

**Contractor Name:\***

**Contractor Signature:\***

**Date:\***

\* "Public Entity" means the State of Arkansas, or a political subdivision of the state, including all boards, commissions, agencies, institutions, authorities, and bodies politic and corporate of the state, created by or in accordance with state law or regulations, and does include colleges, universities, a statewide public employee retirement system, and institutions in Arkansas as well as units of local and municipal government.

## **ATTACHMENT A - ELIGIBLE BIDDER CERTIFICATION**

---

The Bidder represents and warrants for itself, its employees and its subcontractors and certifies they:

1. Are not presently debarred, suspended, proposed for debarment, declared ineligible, or voluntarily excluded from covered transactions by any Federal department or agency;
2. Have not within a three-year period preceding this Bid been convicted of or had a civil judgment rendered against them for commission of fraud or a criminal offense in connection with obtaining, attempting to obtain, or performing a public (Federal, State, or local) transaction or contract under a public transaction; violation of Federal or State antitrust statutes or commission of embezzlement, theft, forgery, bribery, falsification or destruction of records, making false statements, or receiving stolen property;
3. Are not presently indicted for or otherwise criminally or civilly charged by a governmental entity (Federal, State, or local) with commission of any of the offenses enumerated in paragraph two (2) of this Certification;
4. Have not within a one-year period preceding this application/Bid had one or more public transactions (Federal, State, or local) terminated for cause or default; and

The Bidder represents, warrants and acknowledges the understanding that restrictions placed on the employment of labor or on the scale of pay for the work on a contract will be the requirements of the Fair Labor Standards Act (Federal Wage-Hour Law) of 1938, 28 USC §201 et seq., and other applicable labor laws.

The person executing this Certification further represents, warrants and affirms the truthfulness and accuracy of the contents of the statements submitted on or with this Certification and understands that the provisions of 31 USC §3801 et seq. are applicable thereto.

**BIDDER NAME (Company Name):\***

**BY (Signature):\***

**TITLE:\***

## **BID BOND**

---

**In the amount of \$500.00**

**Guarantee Method\***

Choices...

**Paper Bid Bond, Cashier's Check, Certified Check, Money Order, or an Annual Bond on File**

**Confirmation\***

Choices...

**Electronic Bid Bond**

**Bond ID\***

**Surety Agency\***

Choices...

**Surety State\***

**Principal\***

## **ENVELOPE REQUIRED DOCUMENT LIST**

---

Name	Omission Terms
The information supplied in this component will be available to the owner-agency immediately after the bid deadline, but before the bid is opened.	
Paper Bid Bond, Cashier's Check, Certified Check, Money Order, or an Annual Bond on File Original, wet-ink documents are required at time of bid op...	I have opted to electronically verify my bid bond.
1 Required Document	

## REQUIRED DOCUMENT LIST

Name	Omission Terms
Contract and Grant Disclosure and Certification Form Failure to complete all of the following information may re...	
1 Required Document	

## ARDOT - STANDARD BID CONDITIONS

1. **GENERAL:** Any special terms and conditions included in the invitation for bid override these standard terms and conditions. The standard terms and conditions and any special terms and conditions become part of any contract entered into if any or all parts of the bid are accepted by the Arkansas Department of Transportation (ARDOT).
2. **ACCEPTANCE AND REJECTION:** ARDOT reserves the right to reject any or all bids, to accept bids in whole or in part (unless otherwise indicated by bidder), to waive any informalities in bids received, to accept bids on materials or equipment with variations from specifications where efficiency of operation will not be impaired, and to award bids to best serve the interest of the State.
3. **PRICES:** Unless otherwise stated in the Bid Invitation, the following will apply: (1) unit prices shall be bid, (2) prices should be stated in units of quantity specified (feet, each, lbs., etc.), (3) prices must be F.O.B. destination specified in bid, (4) prices must be firm and not subject to escalation, (5) bid must be firm for acceptance for 30 days from bid opening date. In case of errors in extension, unit prices shall govern. Discounts from bid price will not be considered in making awards.
4. **BID BONDS AND PERFORMANCE BONDS:** If required, a **Bid Bond** in the form of a cashier's check, certified check, or surety bond issued by a surety company, in an amount stated in the Bid Invitation, must accompany bid. Personal and company checks are not acceptable as Bid Bonds. Surety Bonds may be submitted electronically through the online bidding process. Cashier's checks, Certified checks, or Money orders submitted as bid bonds must be physically received by Equipment & Procurement located at 11302 West Baseline Road, Little Rock, AR 72209 prior to the designated time of the bid opening. Failure to submit a Bid Bond as required will cause a bid to be rejected. The Bid Bond will be forfeited as liquidated damages if the successful bidder fails to provide a required Performance Bond within the period stipulated by ARDOT or fails to honor their bid. When a bidder claims and can show clear and convincing evidence that a material mistake was made in the bid and was not the bid intended, the bidder may be permitted to withdraw their bid prior to award without forfeiture of bid bond. Cashier's checks and certified checks submitted as Bid Bonds will be returned to unsuccessful bidders; surety bonds will be retained. The successful bidder will be required to furnish a **Performance Bond** in an amount stated in the Bid Invitation and in the form of a cashier's check, certified check, or surety bond issued by a surety company, unless otherwise stated in the Bid Invitation, as a guarantee of delivery of goods/services in accordance with the specifications and within the time established in the bid. Personal and company checks are not acceptable as Performance Bonds. In some cases, a cashier's check or certified check submitted as a Bid Bond will be held as the Performance Bond of the successful bidder. Cashier's checks or certified checks submitted as Performance Bonds will be refunded shortly after payment has been made to the successful bidder for completion of all terms of the bid; surety bonds will be retained. Surety bonds must be issued by a surety company that is authorized to do business in the State of Arkansas and that is listed on the current United States Department of the Treasury Listing of Approved Sureties. Surety bonds must be executed by a resident or non-resident agent who is licensed by the Arkansas State Insurance Commissioner to represent the surety company executing the bond, and the resident or non-resident agent shall file with the bond the power of attorney of the agent to act on behalf of the bonding company. Certain bids involving labor will require Performance Bonds in the form of surety bonds only (no checks of any kind allowed). These bonds shall not only serve to guarantee the completion of the work, but also to guarantee the excellence of both workmanship and material until the work is finally accepted and the provisions of the Plans, Specifications, and Special Provisions fulfilled. In such cases, the company issuing the surety bond must comply with all stipulations herein and must be named in the U. S. Treasury listing of companies holding Certificates of Authority as acceptable sureties on Federal Bonds and as acceptable reinsuring companies. Any excess between the face amount of the bond and the underwriting limitation of the bonding company shall be protected by reinsurance provided by an acceptable reinsuring company. Annual Bid and Performance Bonds on file with E & P Division must have sufficient unencumbered funds to meet current bonding requirements, or the bid will be rejected, unless the balance is submitted as set forth above, prior to bid opening.
5. **TAXES:** The ARDOT is not exempt from Arkansas State Sales and Use Taxes, or local option city/county sales taxes, when applicable, and bidders are responsible to the State Revenue Department for such taxes. These taxes should not be included in bid prices, but where required by law, will be paid by the ARDOT as an addition thereto, and should be added to the billing to the ARDOT. The ARDOT is exempt from Federal Excise Taxes on all commodities except motor fuels; and excise taxes should not be included in bid prices except for motor fuels. Where applicable, tax exemption certificates will be furnished by the ARDOT.
6. **"ALL OR NONE" BIDS:** Bidders who wish to bid "All or None" on two or more items shall so stipulate on the face of bid sheet; otherwise, bid may be awarded on an individual item basis.
7. **SPECIFICATIONS:** Complete specifications should be attached for any substitution or alternate offered, or where amplification is necessary. Bidder's name must be placed on all attachments to the bid.
8. **EXCEPTIONS TO SPECIFICATIONS:** Any exceptions to the bid specifications must be stated in the bid. Any exceptions to manufacturer's published literature must be stated in the bid, or it will be assumed that bidder is bidding exactly as stated in the literature.
9. **BRAND NAME REFERENCES:** All brand name references in bid specifications refer to that commodity or its equivalent, unless otherwise stated in Bid Invitation. Bidder should state brand or trade name of item being bid, if such name exists.
10. **FREIGHT:** All freight charges should be included in bid price. Any change in common carrier rates authorized by the Interstate Commerce Commission will be adjusted if such change occurs after the bid opening date. Receipted common carrier bills that reflect ICC authorized rate changes must be furnished.

11. **SAMPLES, LITERATURE, DEMONSTRATIONS:** Samples and technical literature must be provided free of any charge within 14 days of ARDOT request, and free demonstrations within 30 days, unless ARDOT extends time. Failure to provide as requested within this period may cause bid to be rejected. Samples, literature and demonstrations must be substantially the same as the item(s) being bid, unless otherwise agreed to by ARDOT. Samples that are not destroyed will be returned upon request at bidders expense. Samples from successful bidders may be retained for comparison with items actually furnished.
12. **GUARANTY:** Unless otherwise indicated in Bid Invitation, it is understood and agreed that any item offered or shipped on this bid shall be newly manufactured, latest model and design, and in first class condition; and that all containers shall be new, suitable for storage or shipment and in compliance with all applicable laws relating to construction, packaging, labeling and registration.
13. **BACKORDERS OR DELAY IN DELIVERY:** Backorders or failure to deliver within the time required may constitute default. Vendor must give written notice to the ARDOT, as soon as possible, of the reason for any delay and the expected delivery date. The ARDOT has the right to extend delivery if reasons appear valid. If reason or delivery date is not acceptable, vendor is in default.
14. **DEFAULT:** All commodities furnished will be subject to inspection and acceptance by ARDOT after delivery. Default in promised delivery or failure to meet specifications authorizes the ARDOT to cancel award or any portion of same, to reasonably purchase commodities or services elsewhere and to charge full increase, if any, in cost and handling to defaulting vendor. Applicable bonds may be forfeited.
15. **ETHICS:** *"It shall be a breach of ethical standards for a person to be retained, or to retain a person, to solicit or secure a State contract upon an agreement of understanding for a commission, percentage, brokerage, or contingent fee, except for retention of bona fide employees or bona fide established commercial selling agencies maintained by the contractor for the purpose of securing business."* (Arkansas Code, Annotated, Section 19-11-708).
16. **NOTICE OF NONDISCRIMINATION:** The Arkansas State Highway Commission, through ARDOT, complies with all civil rights provisions of federal statutes and related authorities that prohibit discrimination in programs and activities receiving federal financial assistance. Therefore, ARDOT does not discriminate on the basis of race, sex, color, age, national origin, religion (not applicable as a protected group under the Federal Motor Carrier Safety Administration Title VI Program), disability, Limited English Proficiency (LEP), or low-income status in the admission, access to and treatment in the ARDOT's programs and activities, as well as the ARDOT's hiring or employment practices. Complaints of alleged discrimination and inquiries regarding the ARDOT's nondiscrimination policies may be directed to Joanna P. McFadden Section Head – EEO/DBE (ADA/504/Title VI Coordinator), P. O. Box 2261, Little Rock, AR 72203, (501)569-2298, (Voice/TTY 711), or the following email address: [joanna.mcfadden@ardot.gov](mailto:joanna.mcfadden@ardot.gov). Free language assistance for Limited English Proficient individuals is available upon request. This notice is available from the ADA/504/Title VI Coordinator in large print, on audiotape and in Braille.
17. **PROHIBITION OF EMPLOYMENT OF ILLEGAL IMMIGRANTS:** Pursuant to Arkansas Code Annotated 19-11-105, all bidders must certify prior to award of a contract that they **do not** employ or contract with any illegal immigrant(s) in its contract with the state. Bidders shall certify online at <https://www.ark.org/dfa/immigrant/index.php>.
18. **DISCLOSURE:** Failure to make any disclosure required by Governor's Executive Order 98-04, or any violation of any rule, regulation, or policy adopted pursuant to that order, **shall** be a material breach of the terms of this contract. Any contractor, whether an individual or entity, who fails to make the required disclosure or who violates any rule, regulation, or policy **shall** be subject to all legal remedies available to the agency.

## CONTRACT AND GRANT DISCLOSURE AND CERTIFICATION FORM

Failure to complete all of the following information may result in a delay in obtaining a contract, lease, purchase agreement, or grant award with any Arkansas State Agency.

SUBCONTRACTOR: \_\_\_\_\_ SUBCONTRACTOR NAME: \_\_\_\_\_

Yes  No

IS THIS FOR:

TAXPAYER ID NAME: \_\_\_\_\_  Goods?  Services?  Both?

YOUR LAST NAME: \_\_\_\_\_ FIRST NAME: \_\_\_\_\_ M.I.: \_\_\_\_\_

ADDRESS: \_\_\_\_\_

CITY: \_\_\_\_\_ STATE: \_\_\_\_\_ ZIP CODE: \_\_\_\_\_ COUNTY: \_\_\_\_\_

**AS A CONDITION OF OBTAINING, EXTENDING, AMENDING, OR RENEWING A CONTRACT, LEASE, PURCHASE AGREEMENT, OR GRANT AWARD WITH ANY ARKANSAS STATE AGENCY, THE FOLLOWING INFORMATION MUST BE DISCLOSED:**

### FOR INDIVIDUALS \*

Indicate below if: you, your spouse or the brother, sister, parent, or child of you or your spouse is a current or former: member of the General Assembly, Constitutional Officer, State Board or Commission Member, or State Employee:

Position Held	Mark (✓)		Name of Position of Job Held <small>(senator, representative, name of board/ commission, data entry, etc.)</small>	For How Long?		What is the person(s) name and how are they related to you? <small>(i.e., Jane Q. Public, spouse, John Q. Public, Jr., child, etc.)</small>	Relation
	Current	Former		From MM/YY	To MM/YY		
General Assembly						Person's Name(s)	
Constitutional Officer							
State Board or Commission Member							
State Employee							

None of the above applies

### FOR AN ENTITY (BUSINESS) \*

Indicate below if any of the following persons, current or former, hold any position of control or hold any ownership interest of 10% or greater in the entity: member of the General Assembly, Constitutional Officer, State Board or Commission Member, State Employee, or the spouse, brother, sister, parent, or child of a member of the General Assembly, Constitutional Officer, State Board or Commission Member, or State Employee. Position of control means the power to direct the purchasing policies or influence the management of the entity.

Position Held	Mark (✓)		Name of Position of Job Held <small>(senator, representative, name of board/ commission, data entry, etc.)</small>	For How Long?		What is the person(s) name and what is his/her % of ownership interest and/or what is his/her position of control?	Ownership Interest (%)	Position of Control
	Current	Former		From MM/YY	To MM/YY			
General Assembly						Person's Name(s)		
Constitutional Officer								
State Board or Commission Member								
State Employee								

None of the above applies



## Contract and Grant Disclosure and Certification Form

*Failure to make any disclosure required by Governor's Executive Order 98-04, or any violation of any rule, regulation, or policy adopted pursuant to that Order, shall be a material breach of the terms of this contract. Any contractor, whether an individual or entity, who fails to make the required disclosure or who violates any rule, regulation, or policy shall be subject to all legal remedies available to the agency.*

**As an additional condition of obtaining, extending, amending, or renewing a contract with a state agency I agree as follows:**

1. Prior to entering into any agreement with any subcontractor, prior or subsequent to the contract date, I will require the subcontractor to complete a **CONTRACT AND GRANT DISCLOSURE AND CERTIFICATION FORM**. Subcontractor shall mean any person or entity with whom I enter an agreement whereby I assign or otherwise delegate to the person or entity, for consideration, all, or any part, of the performance required of me under the terms of my contract with the state agency.
2. I will include the following language as a part of any agreement with a subcontractor:  

Failure to make any disclosure required by Governor's Executive Order 98-04, or any violation of any rule, regulation, or policy adopted pursuant to that Order, shall be a material breach of the terms of this subcontract. The party who fails to make the required disclosure or who violates any rule, regulation, or policy shall be subject to all legal remedies available to the contractor.
3. No later than ten (10) days after entering into any agreement with a subcontractor, whether prior or subsequent to the contract date, I will mail a copy of the **CONTRACT AND GRANT DISCLOSURE AND CERTIFICATION FORM** completed by the subcontractor and a statement containing the dollar amount of the subcontract to the state agency.

Signature _____	Title _____	Date _____
Vendor Contact Person _____	Title _____	Phone No. _____

Agency Use Only			
Agency Number _____	Agency Name _____	Agency Contact Person _____	Contract or Grant No. _____

ARKANSAS DEPARTMENT OF TRANSPORTATION

SPECIAL PROVISION

GUARD RAIL MAINTENANCE

**DESCRIPTION:**

This work shall consist of:

1. Removing and disposing of existing sub-standard installations or those installations which have been damaged beyond repair.
2. Installation of new guard rail systems with materials furnished by the Contractor or the Department as appropriate and constructed to current standards.

This work shall be limited to District One (Crittenden, Cross, Lee, Monroe, Phillips, St. Francis and Woodruff Counties). Locations within the District shall be selected by the District Engineer.

The Contract shall be limited to a one year period following the award of the Contract.

The Department reserves the right to cancel the Contract before the one year time limit.

The Department reserves the right to also perform guard rail repair as necessary within the areas covered by this Contract.

The Contractor shall assume full liability for traffic hazards that might be created by his operation and save harmless the Arkansas State Highway Commission in all respects.

**MATERIALS:**

All materials furnished by the Contractor shall meet the requirements of the Arkansas Department of Transportation Standard Specifications for Highway Construction, Edition of 2014, all applicable Special Provisions and Supplemental Specifications and Current Standard Drawings GR-7, GR-8, GR-8A, GR-9, GR-10, GR-10A, GR-11, GRT-1 and MNTNC-1

Department furnished materials will be available at the District One Headquarters at Wynne during normal working hours. Miscellaneous hardware items such as nuts, bolts, washers, etc. necessary to reset Department furnished items shall be supplied by the Contractor and shall comply with all applicable specification requirements and be approved by Materials and Research Division. Only the exact amount of materials necessary for the installation will be furnished. Any material damaged by the Contractor will be replaced at no cost to the State.

Any guard rail elements removed from an installation which the District Engineer determines to be salvageable shall become the property of the Department and shall be delivered to the District One Headquarters during normal working hours. Non-Salvageable materials shall be disposed of by the Contractor.

**EQUIPMENT:**

All equipment necessary for the satisfactory performance of this work shall be on hand before work begins.

**PROCEDURE:**

The Contractor will be required to begin work within ten (10) calendar days of notification from the District Engineer that work is required and will be notified in writing each time it is necessary to perform work. A list will be enclosed with the notification which includes Department furnished materials, Contractor furnished materials, and the location and length of each installation. This list will be an estimate only and may be adjusted once work begins. The Contractor shall provide the District Maintenance Engineer with their schedule for repairs at the various locations. This notification shall include anticipated traffic control. No lane closures will be allowed in the mornings between 6 a.m. and 9 a.m. and in the afternoons between 3 p.m. and 6 p.m. without the consent of the District Engineer. When the Contractor completes all of the specified work at a location, he shall notify the District Maintenance Engineer and an inspection will be made. Upon acceptance of the work and materials by the Department, a list of completed pay items will be furnished by the Contractor and the specified work will be considered complete.

Replacement, assembly and or installation of guard rail elements shall conform to the Arkansas Department of Transportation Standard Specifications for Highway Construction, Edition of 2014, all applicable Special Provisions and Supplemental Specifications and Current Standard Drawings GR-7, GR-8, GR-8A, GR-9, GR-10, GR-10A, GR-11, GRT-1 and MNTNC-1. The alignment and location of replaced guard rail elements shall conform to and match the portion of any installation which is undamaged and is to remain in place.

When the Engineer determines that an entire guard rail installation is damaged beyond repair or needs to be upgraded to current standards, the Contractor will be instructed to remove and dispose of the installation and to construct a new installation with materials supplied by the Contractor. In such instances, all materials, work, measurement and payment will be in accordance with Arkansas Department of Transportation Standard Specifications for Highway Construction, Edition of 2014, all applicable Special Provisions and Supplemental Specifications and Current Standard Drawings numbered GR-7, GR-8, GR-8A, GR-9, GR-10, GR-10A GR-11 GRT-1 and MNTNC-1. Post holes created by the removal of concrete or wood posts shall be backfilled and thoroughly compacted using suitable material before driving the new steel posts. When possible the spacing of the steel posts shall be staggered between the vacated post holes. In such instances the backfilling may then be accomplished either before or after the steel posts are driven.

**METHOD OF MEASUREMENT AND BASIS OF PAYMENT:**

Mobilization will not be measured and paid for directly but will be considered included in the prices bid for the various items of the Contract.

The cost of traffic control through the work zones will not be measured and paid for directly but will be considered included in the prices bid for the various items of the Contract.

Replaced steel guard rail sections, installed and accepted, will be measured by the linear foot, complete in place, and paid for at the Contract unit price bid. As indicated on the Standard Drawings Sections 1 and 2 are end sections and will each be considered as 25 feet in length. Intermediate Section 3 shall be measured along the roadway face from centerline of post to centerline of post. NOTE: The item, Guard Rail Section 1, as shown on Standard Drawing GR-8A, is required to be a double section. Each Section 1 of the double rail will be paid as 50 L.F. of guard rail plate. For the items, Guard Rail Sections 2, 3 and 4, each installation will be paid for as a 25 L.F. section of guard rail plate. This note applies only when individual parts or pieces of a guard rail installation are being replaced and does not apply to the items "Furnish and Install Guard Rail (Type \_\_\_\_).

Replaced guard rail line posts, spacer blocks, back-up plates, terminal sections and terminal anchor posts (Type A & B), installed and accepted, will be measured by the unit and paid for at the Contract unit price bid.

Furnishing and placing anchor bolts, splicing hardware, and/or attachment hardware will not be measured and paid for directly but will be considered included in the prices bid for the various items of the Contract.

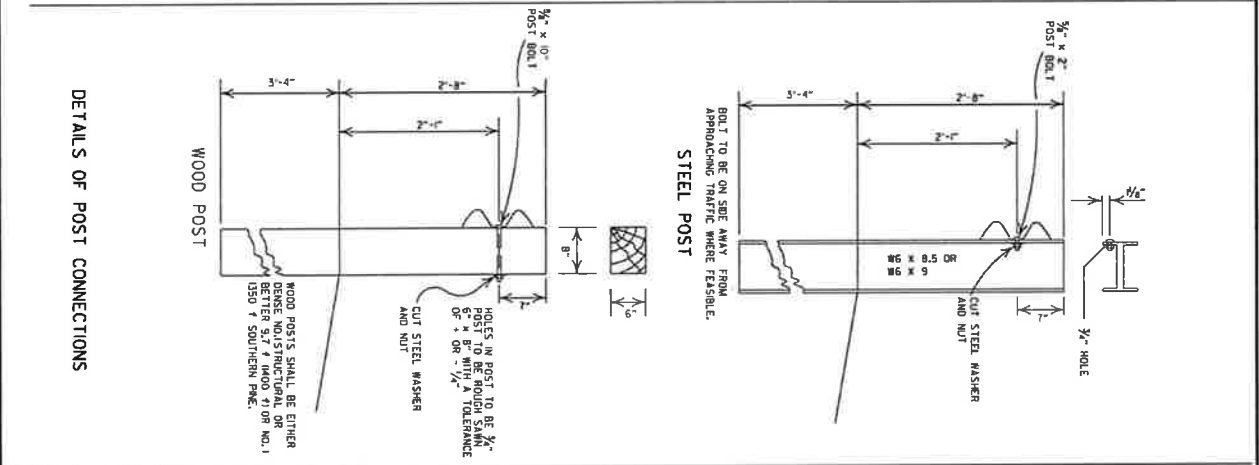
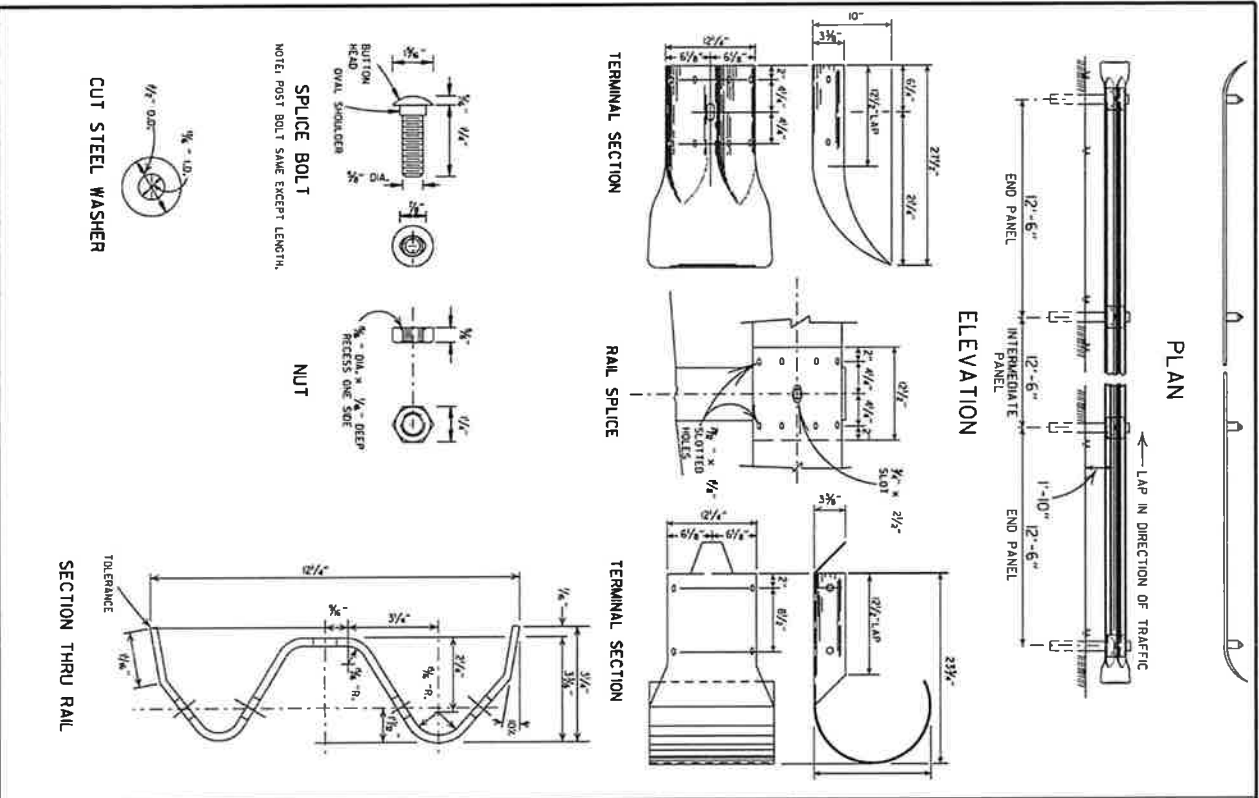
No measurement and payment will be made for necessary excavation and/or backfilling performed in connection with replacing damaged elements of guard rail.

Removal and disposal of guard rail will be measured as provided in the Arkansas Department of Transportation Standard Specifications for Highway Construction, Edition of 2014, all applicable Special Provisions and Standard Drawings GR-7, GR-8, GR-8A, GR-9, GR-10, GR-10A, GR-11, GRT-1, MNTNC-1 and paid for at the contract unit price bid. Removal and disposal of posts, spacer blocks, and miscellaneous hardware will not be measured and paid for directly but will be considered included in the price bid for the various items of the contract.

Work completed at each designated location shall be paid for upon acceptance of the work. Payment shall be based upon the list of completed pay items furnished by the Contractor to the Department and the Contract unit price for those items.

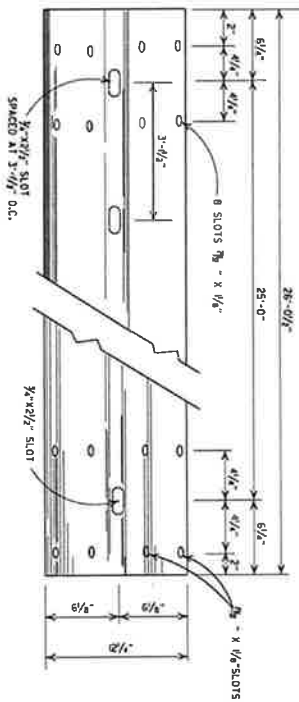
**TRAFFIC CONTROL THROUGH WORK ZONE:**

The Contractor shall sign and mark all work zones and lane closures in accordance with the Manual on Uniform Traffic Control Devices and Current Standard Drawings TC-1, TC-2, TC-3, TC-4 and TC-5. All signing materials shall be High Intensity. The Contractor shall conduct repair operations in such a manner that all feasible traffic lanes will be open to traffic. Lane closures may be established as needed to perform the work, except that during period of adverse weather or peak high traffic, lane closures will be permitted only if approved by the Engineer.

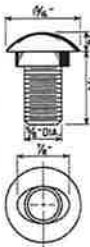
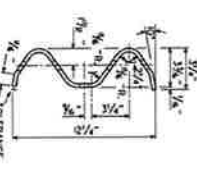


DATE	BY	REVISION	DESCRIPTION
01-14-00	W. J. ZIMMER	1	ISSUED FOR BIDDING
01-14-00	W. J. ZIMMER	2	REVISED TO SHOW 1/2" DIA. POST BOLT
01-14-00	W. J. ZIMMER	3	REVISED TO SHOW 1/2" DIA. POST BOLT
01-14-00	W. J. ZIMMER	4	REVISED TO SHOW 1/2" DIA. POST BOLT
01-14-00	W. J. ZIMMER	5	REVISED TO SHOW 1/2" DIA. POST BOLT
01-14-00	W. J. ZIMMER	6	REVISED TO SHOW 1/2" DIA. POST BOLT
01-14-00	W. J. ZIMMER	7	REVISED TO SHOW 1/2" DIA. POST BOLT
01-14-00	W. J. ZIMMER	8	REVISED TO SHOW 1/2" DIA. POST BOLT
01-14-00	W. J. ZIMMER	9	REVISED TO SHOW 1/2" DIA. POST BOLT
01-14-00	W. J. ZIMMER	10	REVISED TO SHOW 1/2" DIA. POST BOLT
01-14-00	W. J. ZIMMER	11	REVISED TO SHOW 1/2" DIA. POST BOLT
01-14-00	W. J. ZIMMER	12	REVISED TO SHOW 1/2" DIA. POST BOLT
01-14-00	W. J. ZIMMER	13	REVISED TO SHOW 1/2" DIA. POST BOLT
01-14-00	W. J. ZIMMER	14	REVISED TO SHOW 1/2" DIA. POST BOLT
01-14-00	W. J. ZIMMER	15	REVISED TO SHOW 1/2" DIA. POST BOLT
01-14-00	W. J. ZIMMER	16	REVISED TO SHOW 1/2" DIA. POST BOLT
01-14-00	W. J. ZIMMER	17	REVISED TO SHOW 1/2" DIA. POST BOLT
01-14-00	W. J. ZIMMER	18	REVISED TO SHOW 1/2" DIA. POST BOLT
01-14-00	W. J. ZIMMER	19	REVISED TO SHOW 1/2" DIA. POST BOLT
01-14-00	W. J. ZIMMER	20	REVISED TO SHOW 1/2" DIA. POST BOLT
01-14-00	W. J. ZIMMER	21	REVISED TO SHOW 1/2" DIA. POST BOLT
01-14-00	W. J. ZIMMER	22	REVISED TO SHOW 1/2" DIA. POST BOLT
01-14-00	W. J. ZIMMER	23	REVISED TO SHOW 1/2" DIA. POST BOLT
01-14-00	W. J. ZIMMER	24	REVISED TO SHOW 1/2" DIA. POST BOLT
01-14-00	W. J. ZIMMER	25	REVISED TO SHOW 1/2" DIA. POST BOLT
01-14-00	W. J. ZIMMER	26	REVISED TO SHOW 1/2" DIA. POST BOLT
01-14-00	W. J. ZIMMER	27	REVISED TO SHOW 1/2" DIA. POST BOLT
01-14-00	W. J. ZIMMER	28	REVISED TO SHOW 1/2" DIA. POST BOLT
01-14-00	W. J. ZIMMER	29	REVISED TO SHOW 1/2" DIA. POST BOLT
01-14-00	W. J. ZIMMER	30	REVISED TO SHOW 1/2" DIA. POST BOLT
01-14-00	W. J. ZIMMER	31	REVISED TO SHOW 1/2" DIA. POST BOLT
01-14-00	W. J. ZIMMER	32	REVISED TO SHOW 1/2" DIA. POST BOLT
01-14-00	W. J. ZIMMER	33	REVISED TO SHOW 1/2" DIA. POST BOLT
01-14-00	W. J. ZIMMER	34	REVISED TO SHOW 1/2" DIA. POST BOLT
01-14-00	W. J. ZIMMER	35	REVISED TO SHOW 1/2" DIA. POST BOLT
01-14-00	W. J. ZIMMER	36	REVISED TO SHOW 1/2" DIA. POST BOLT
01-14-00	W. J. ZIMMER	37	REVISED TO SHOW 1/2" DIA. POST BOLT
01-14-00	W. J. ZIMMER	38	REVISED TO SHOW 1/2" DIA. POST BOLT
01-14-00	W. J. ZIMMER	39	REVISED TO SHOW 1/2" DIA. POST BOLT
01-14-00	W. J. ZIMMER	40	REVISED TO SHOW 1/2" DIA. POST BOLT
01-14-00	W. J. ZIMMER	41	REVISED TO SHOW 1/2" DIA. POST BOLT
01-14-00	W. J. ZIMMER	42	REVISED TO SHOW 1/2" DIA. POST BOLT
01-14-00	W. J. ZIMMER	43	REVISED TO SHOW 1/2" DIA. POST BOLT
01-14-00	W. J. ZIMMER	44	REVISED TO SHOW 1/2" DIA. POST BOLT
01-14-00	W. J. ZIMMER	45	REVISED TO SHOW 1/2" DIA. POST BOLT
01-14-00	W. J. ZIMMER	46	REVISED TO SHOW 1/2" DIA. POST BOLT
01-14-00	W. J. ZIMMER	47	REVISED TO SHOW 1/2" DIA. POST BOLT
01-14-00	W. J. ZIMMER	48	REVISED TO SHOW 1/2" DIA. POST BOLT
01-14-00	W. J. ZIMMER	49	REVISED TO SHOW 1/2" DIA. POST BOLT
01-14-00	W. J. ZIMMER	50	REVISED TO SHOW 1/2" DIA. POST BOLT

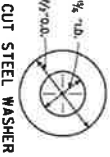
ARKANSAS STATE HIGHWAY COMMISSION  
 GUARD RAIL DETAILS (TYPE C)  
 STREET / ROAD BARRICADE OR  
 TEMPORARY INSTALLATION  
 STANDARD DRAWING GR-7



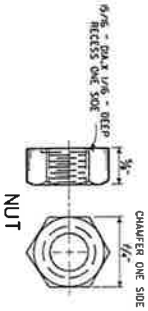
**DETAILS OF  
W-BEAM  
GUARD RAIL**  
CROSS SECTION OF CLOSELY SPACED POSTS AND  
PILING SECTION SHOWN MAY BE SUBSTITUTED  
IF APPROVED BY THE ENGINEER.



**SPLICE BOLT - SAME EXCEPT LENGTH**



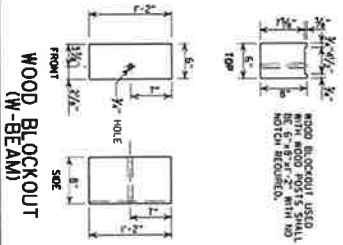
**CUT STEEL WASHER**



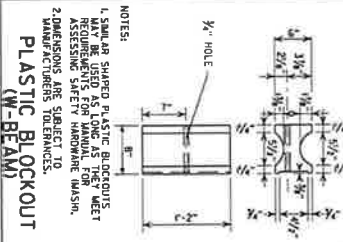
**NUT**

CHAMFER ONE SIDE

5/8" DIA. X 1 1/4" DEEP  
RECESS ONE SIDE

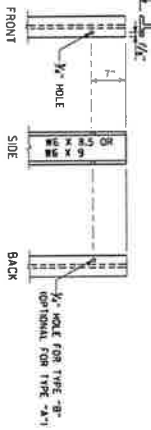


**WOOD BLOCKOUT  
(W-BEAM)**

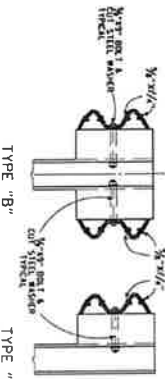


**PLASTIC BLOCKOUT  
(W-BEAM)**

NOTES:  
1. SHARP SHAPED PLASTIC BLOCKOUTS  
MAY BE USED AS LONG AS THEY MEET  
THE REQUIREMENTS FOR THE  
ASSESSING SAFETY HANDBOOK WASH.  
2. DIMENSIONS ARE SUBJECT TO  
MANUFACTURER'S TOLERANCES.



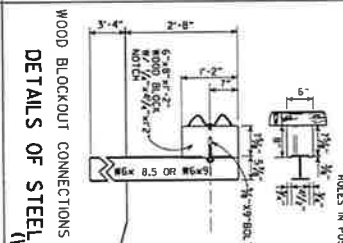
**STEEL POST**



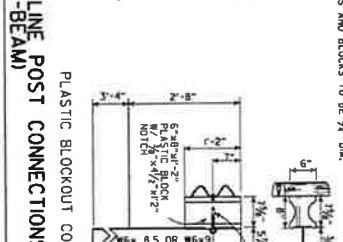
**DETAILS OF STEEL LINE POST CONNECTIONS  
(W-BEAM)**

-GENERAL NOTES-

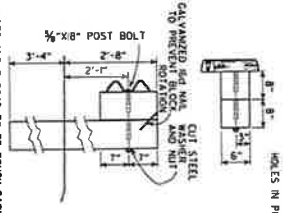
ALL BOLTS SHALL BE SUFFICIENT LENGTH TO EXTEND THROUGH THE FULL THICKNESS OF THE NUT AND NO MORE THAN 1/4" BEYOND THE END OF THE NUT. THE INTERMEDIATE SECTIONS SHALL HAVE A NEAR GUARD RAIL CONTINUED, THE INTERMEDIATE SECTIONS SHALL BE ASSEMBLED ON ONE SIDE UNLESS OTHERWISE NOTED. THE POST SHALL BE ASSEMBLED ON THE PROPER SIDE FROM THE CENTERLINE OF THE POST TO CENTERLINE OF POST.  
USE A NEAR GUARD RAIL COMPONENTS OF SAME MATERIAL FOR ENTIRE JOB. FOR EACH RAIL AND NEAR GUARD RAIL, THE POST SHALL BE DAMP SAND THOROUGHLY TAMPED IN PLACE.  
ANY BACKSLIDING UNDER OR AROUND POST SHALL BE DAMP BETTER SOY PUTS AROUND AND UNDER POSTS SHALL BE DAMP. CONTACT FOR SHALL HAVE THE OPTION OF USING WOOD BLOCKOUTS FOR W-BEAM GUARD RAIL OR PLASTIC BLOCKOUTS AS LONG AS BLOCKOUTS MEET THE REQUIREMENTS OF THE STATE TYPE AS THOSE EXISTING SHALL BE USED.  
FOR MANUAL, FOR ASSESSING SAFETY HANDBOOK WASH FOR MANUAL.



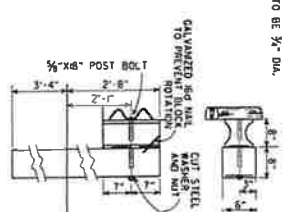
**WOOD BLOCKOUT CONNECTIONS  
(W-BEAM)**



**PLASTIC BLOCKOUT CONNECTIONS  
(W-BEAM)**



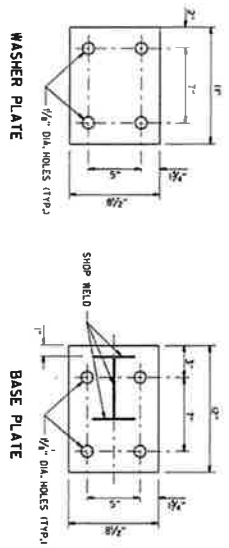
**DETAILS OF WOOD LINE POST CONNECTIONS  
(W-BEAM)**



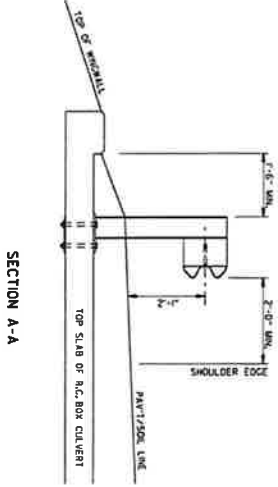
**PLASTIC BLOCKOUT CONNECTIONS  
(W-BEAM)**

DATE	BY	REVISION	FLAID
07-26-97	W. W. W.	REVISION 1	FLAID
07-26-97	W. W. W.	REVISION 2	FLAID
07-26-97	W. W. W.	REVISION 3	FLAID
07-26-97	W. W. W.	REVISION 4	FLAID
07-26-97	W. W. W.	REVISION 5	FLAID
07-26-97	W. W. W.	REVISION 6	FLAID
07-26-97	W. W. W.	REVISION 7	FLAID
07-26-97	W. W. W.	REVISION 8	FLAID
07-26-97	W. W. W.	REVISION 9	FLAID
07-26-97	W. W. W.	REVISION 10	FLAID
07-26-97	W. W. W.	REVISION 11	FLAID
07-26-97	W. W. W.	REVISION 12	FLAID
07-26-97	W. W. W.	REVISION 13	FLAID
07-26-97	W. W. W.	REVISION 14	FLAID
07-26-97	W. W. W.	REVISION 15	FLAID
07-26-97	W. W. W.	REVISION 16	FLAID
07-26-97	W. W. W.	REVISION 17	FLAID
07-26-97	W. W. W.	REVISION 18	FLAID
07-26-97	W. W. W.	REVISION 19	FLAID
07-26-97	W. W. W.	REVISION 20	FLAID
07-26-97	W. W. W.	REVISION 21	FLAID
07-26-97	W. W. W.	REVISION 22	FLAID
07-26-97	W. W. W.	REVISION 23	FLAID
07-26-97	W. W. W.	REVISION 24	FLAID
07-26-97	W. W. W.	REVISION 25	FLAID
07-26-97	W. W. W.	REVISION 26	FLAID
07-26-97	W. W. W.	REVISION 27	FLAID
07-26-97	W. W. W.	REVISION 28	FLAID
07-26-97	W. W. W.	REVISION 29	FLAID
07-26-97	W. W. W.	REVISION 30	FLAID

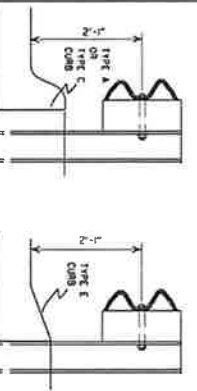
ARKANSAS STATE HIGHWAY COMMISSION  
GUARD RAIL DETAILS  
STANDARD DRAWING CR-8



Notes: Bolt, nuts, washers and plates shall be governed in accordance with Section 807 of the Standard Specifications.



SECTION A-A

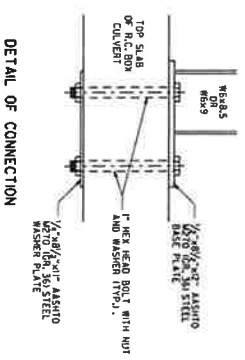


FOR DESIGN SPEEDS OF 50 MPH OR LESS WITH FACE OF CURB.

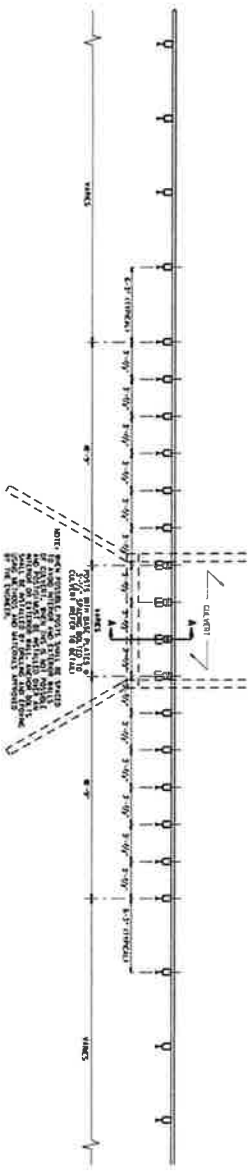
FOR DESIGN SPEEDS OF 55 MPH OR MORE AGAINST BACK OF CURB.

DETAIL OF GUARD RAIL PLACEMENT BEHIND CURB (W-BEAM)

FOR DESIGN SPEEDS OF 50 MPH OR LESS ALL CURB FACES AS SHOWN ON STD. DRAW. C.C.-WAY BE USED. FOR DESIGN SPEEDS OF 55 MPH OR MORE TYPE "E" CURB FACE SHALL BE USED.

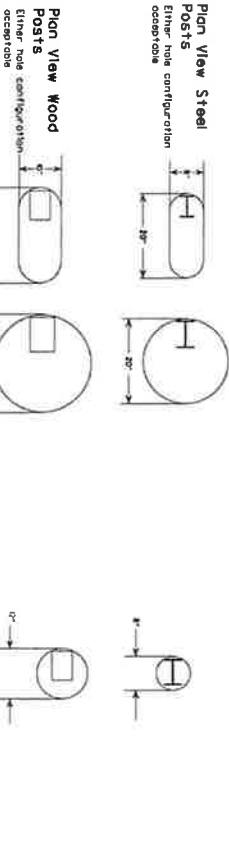
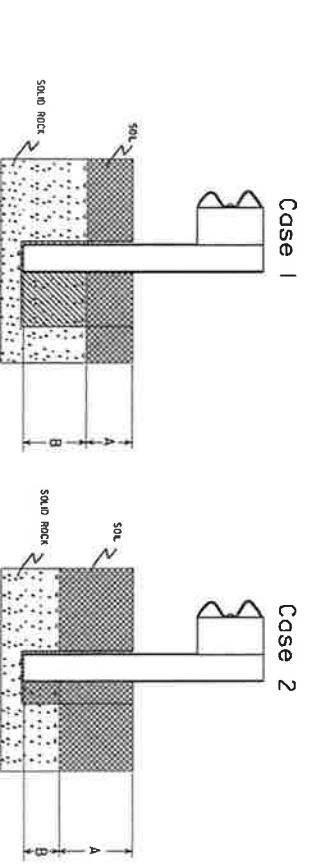


DETAIL OF CONNECTION



PLAN LAYOUT OF TYPE A GUARD RAIL AT LOW-FILL CULVERTS

NOTE: MINIMUM SPACING BETWEEN GUARD RAIL POSTS SHALL BE 3'-0" AND MAXIMUM SPACING SHALL BE 3'-6".



Notes: For overlying soil depths ranging from 0 to 18", the depth of required grouting (B) is equal to 24".

Notes: For overlying soil depths ranging from 18" to 44", the depth of required grouting (B) is equal to either "B" or 44" minus the depth of soil which is less.

Zone A & B Backfill according to Section 612.01a.

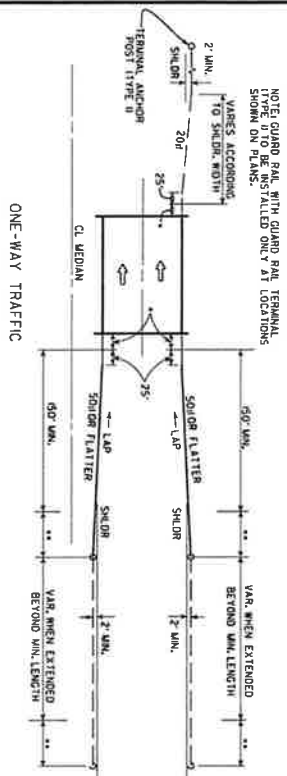
Zone B Backfill in 6" lifts with maximuming the gradation Compact to 95% maximum dry density per ASTM D-958.

Zone B Backfill according to Section 612.01a.

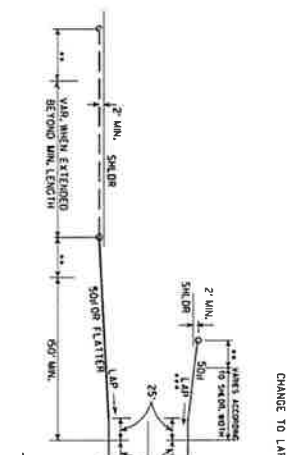
Zone A & B Backfill according to Section 612.01a.

DETAIL OF POST PLACEMENT IN SOLID ROCK (W-BEAM)

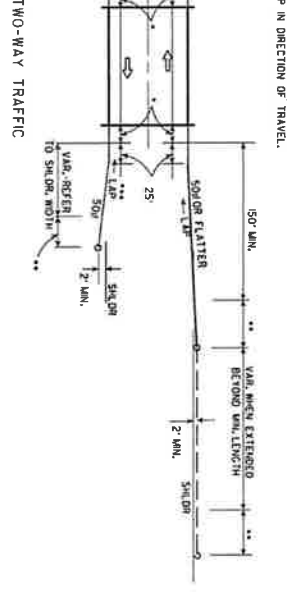
DATE	REVISION	DESCRIPTION
01-12-00	1	ISSUED FOR THE DESIGN OF THE GUARD RAIL
04-12-01	2	REVISED TO REFLECT THE USE OF THE GUARD RAIL
05-01-05	3	REVISED TO REFLECT THE USE OF THE GUARD RAIL
04-04-04	4	REVISED TO REFLECT THE USE OF THE GUARD RAIL
03-01-05	5	REVISED TO REFLECT THE USE OF THE GUARD RAIL
08-02-98	6	REVISED TO REFLECT THE USE OF THE GUARD RAIL
04-03-94	7	REVISED TO REFLECT THE USE OF THE GUARD RAIL
01-12-93	8	REVISED TO REFLECT THE USE OF THE GUARD RAIL
01-12-93	9	REVISED TO REFLECT THE USE OF THE GUARD RAIL
01-12-93	10	REVISED TO REFLECT THE USE OF THE GUARD RAIL
01-12-93	11	REVISED TO REFLECT THE USE OF THE GUARD RAIL
01-12-93	12	REVISED TO REFLECT THE USE OF THE GUARD RAIL
01-12-93	13	REVISED TO REFLECT THE USE OF THE GUARD RAIL
01-12-93	14	REVISED TO REFLECT THE USE OF THE GUARD RAIL
01-12-93	15	REVISED TO REFLECT THE USE OF THE GUARD RAIL
01-12-93	16	REVISED TO REFLECT THE USE OF THE GUARD RAIL
01-12-93	17	REVISED TO REFLECT THE USE OF THE GUARD RAIL
01-12-93	18	REVISED TO REFLECT THE USE OF THE GUARD RAIL
01-12-93	19	REVISED TO REFLECT THE USE OF THE GUARD RAIL
01-12-93	20	REVISED TO REFLECT THE USE OF THE GUARD RAIL



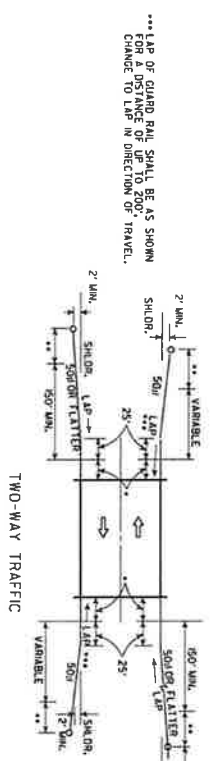
NOTE: GUARD RAIL WITH GUARD RAIL TERMINAL TYPE 1 TO BE INSTALLED ONLY AT LOCATIONS SHOWN ON PLANS.



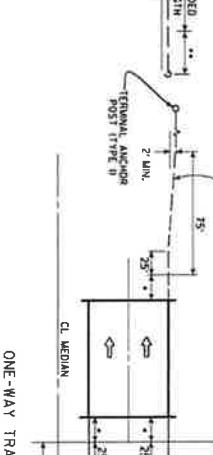
NOTE: GUARD RAIL WITH GUARD RAIL TERMINAL TYPE 2 TO BE INSTALLED ONLY AT LOCATIONS SHOWN ON PLANS.



METHODS OF INSTALLATION OF GUARD RAIL AT LESS THAN FULL SHOULDER WIDTH BRIDGES USING GUARD RAIL TERMINAL (TYPE 2)

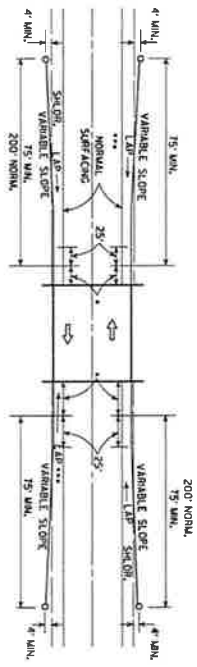


NOTE: GUARD RAIL WITH GUARD RAIL TERMINAL TYPE 2 TO BE INSTALLED ONLY AT LOCATIONS SHOWN ON PLANS.



NOTE: GUARD RAIL WITH GUARD RAIL TERMINAL TYPE 2 TO BE INSTALLED ONLY AT LOCATIONS SHOWN ON PLANS.

METHOD OF INSTALLATION OF GUARD RAIL AT FULL SHOULDER WIDTH BRIDGES USING GUARD RAIL TERMINAL (TYPE 2)



NOTE: GUARD RAIL WITH GUARD RAIL TERMINAL TYPE 2 TO BE INSTALLED ONLY AT LOCATIONS SHOWN ON PLANS.

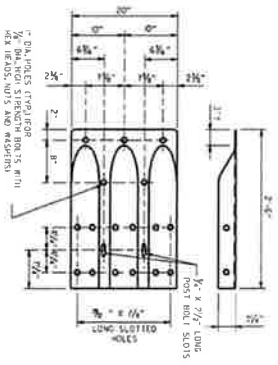
LEGEND  
 \* TYPE BEAM GUARD RAIL TERMINAL  
 \*\* GUARD RAIL TERMINAL (TYPE 2)

METHOD OF INSTALLATION OF GUARD RAIL USING GUARD RAIL TERMINAL (TYPE 1) (FULL SHOULDER WIDTH OR LESS BRIDGES)

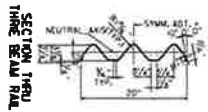
REVISION	DATE	BY	CHKD	APPROVED
1	01-19	...	...	...
2	01-19	...	...	...
3	01-19	...	...	...
4	01-19	...	...	...
5	01-19	...	...	...
6	01-19	...	...	...
7	01-19	...	...	...
8	01-19	...	...	...
9	01-19	...	...	...
10	01-19	...	...	...
11	01-19	...	...	...
12	01-19	...	...	...
13	01-19	...	...	...
14	01-19	...	...	...
15	01-19	...	...	...
16	01-19	...	...	...
17	01-19	...	...	...
18	01-19	...	...	...
19	01-19	...	...	...
20	01-19	...	...	...
21	01-19	...	...	...
22	01-19	...	...	...
23	01-19	...	...	...
24	01-19	...	...	...
25	01-19	...	...	...
26	01-19	...	...	...
27	01-19	...	...	...
28	01-19	...	...	...
29	01-19	...	...	...
30	01-19	...	...	...
31	01-19	...	...	...
32	01-19	...	...	...
33	01-19	...	...	...
34	01-19	...	...	...
35	01-19	...	...	...
36	01-19	...	...	...
37	01-19	...	...	...
38	01-19	...	...	...
39	01-19	...	...	...
40	01-19	...	...	...
41	01-19	...	...	...
42	01-19	...	...	...
43	01-19	...	...	...
44	01-19	...	...	...
45	01-19	...	...	...
46	01-19	...	...	...
47	01-19	...	...	...
48	01-19	...	...	...
49	01-19	...	...	...
50	01-19	...	...	...
51	01-19	...	...	...
52	01-19	...	...	...
53	01-19	...	...	...
54	01-19	...	...	...
55	01-19	...	...	...
56	01-19	...	...	...
57	01-19	...	...	...
58	01-19	...	...	...
59	01-19	...	...	...
60	01-19	...	...	...
61	01-19	...	...	...
62	01-19	...	...	...
63	01-19	...	...	...
64	01-19	...	...	...
65	01-19	...	...	...
66	01-19	...	...	...
67	01-19	...	...	...
68	01-19	...	...	...
69	01-19	...	...	...
70	01-19	...	...	...
71	01-19	...	...	...
72	01-19	...	...	...
73	01-19	...	...	...
74	01-19	...	...	...
75	01-19	...	...	...
76	01-19	...	...	...
77	01-19	...	...	...
78	01-19	...	...	...
79	01-19	...	...	...
80	01-19	...	...	...
81	01-19	...	...	...
82	01-19	...	...	...
83	01-19	...	...	...
84	01-19	...	...	...
85	01-19	...	...	...
86	01-19	...	...	...
87	01-19	...	...	...
88	01-19	...	...	...
89	01-19	...	...	...
90	01-19	...	...	...
91	01-19	...	...	...
92	01-19	...	...	...
93	01-19	...	...	...
94	01-19	...	...	...
95	01-19	...	...	...
96	01-19	...	...	...
97	01-19	...	...	...
98	01-19	...	...	...
99	01-19	...	...	...
100	01-19	...	...	...

ARKANSAS STATE HIGHWAY COMMISSION  
 GUARD RAIL DETAILS  
 STANDARD DRAWING CR-9

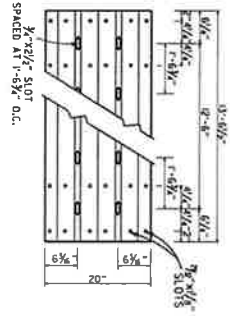




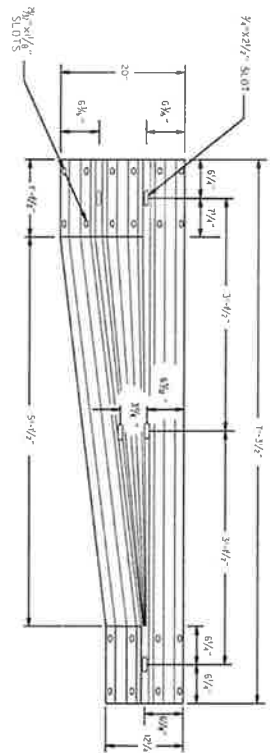
SPECIAL END SHOE



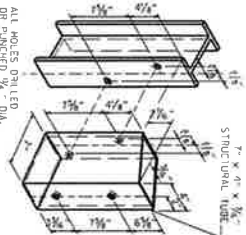
SECTION THRU THREE BEAM RAIL



THREE BEAM RAIL



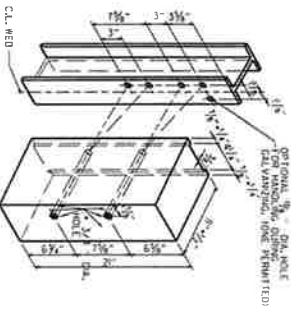
TRANSITION SECTION



ATTACH BLOCKOUT TO POST USING 5/8" DIA. HEAD BOLTS WITH 1/2" DIA. CON. STEEL WASHERS AND NUTS.

ALL HOLES DRILLED OR PUNCHED 1/4" O.A.

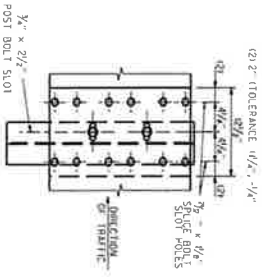
STRUCTURAL STEEL TUBING BLOCKOUT DETAIL



ALL HOLES 1/2" DIAMETER EXCEPT AS NOTED

HOLE PUNCHING DETAIL FOR STEEL POST & WOOD OR PLASTIC BLOCKOUTS

NOTE: BOLTS SHALL BE THE SAME TYPE THROUGHOUT THE PROJECT - UNITS.



THREE BEAM RAIL SPLICE AT POST

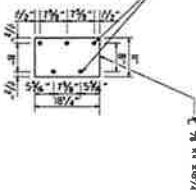
GENERAL NOTES:  
 THE THREE BEAM RAIL, SPECIAL END SHOE, AND THE TRANSITION SECTION SHALL BE MADE OF 304 STAINLESS STEEL UNLESS OTHERWISE NOTED. THE TOP SURFACE OF THE BEAM RAIL SHALL BE GALVANIZED.  
 ALL LAP JOINTS AND WELD JOINTS SHALL BE MADE IN THE DIRECTION OF TRAVEL.  
 REFER TO STANDARD DRAWING CR-9 & CR-10.  
 USE THE BEAM GUID RAIL COMPONENTS OF SAME MATERIAL FOR ENTIRE JOB.  
 THREE BEAM RAILS SHALL BE SAME MATERIAL AS W-BEAM POSTS FOR ENTIRE JOB.  
 REFER TO CR-10 FOR NO. 11500 1' SOUTHERN PINE.

NO.	REVISION	DATE	BY	CHECKED	APPROVED
1	REVISED PER CR-9 & CR-10	01/01/00	J. S. JONES	A. B. SMITH	
2	REVISED PER CR-9 & CR-10	01/01/00	J. S. JONES	A. B. SMITH	
3	REVISED PER CR-9 & CR-10	01/01/00	J. S. JONES	A. B. SMITH	
4	REVISED PER CR-9 & CR-10	01/01/00	J. S. JONES	A. B. SMITH	
5	REVISED PER CR-9 & CR-10	01/01/00	J. S. JONES	A. B. SMITH	
6	REVISED PER CR-9 & CR-10	01/01/00	J. S. JONES	A. B. SMITH	
7	REVISED PER CR-9 & CR-10	01/01/00	J. S. JONES	A. B. SMITH	
8	REVISED PER CR-9 & CR-10	01/01/00	J. S. JONES	A. B. SMITH	
9	REVISED PER CR-9 & CR-10	01/01/00	J. S. JONES	A. B. SMITH	
10	REVISED PER CR-9 & CR-10	01/01/00	J. S. JONES	A. B. SMITH	

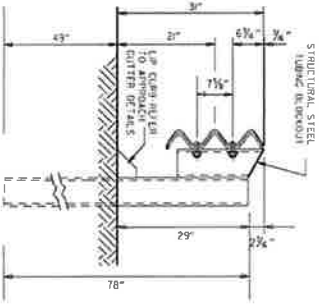
THREE BEAM RAIL SPLICE AT POST

CONNECTOR PLATE

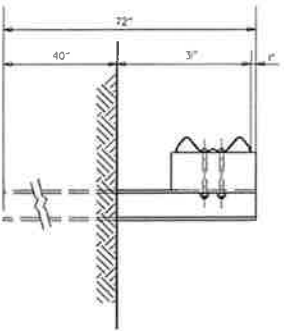
CONNECTOR PLATE SHALL BE A36 OR A572 GR. 35 AND SHALL BE GALVANIZED AFTER FABRICATION. GALVANIZING SHALL CONFORM TO SUBSECTION 807.05 OF THE STANDARD SPECIFICATIONS. CONNECTOR PLATE TO BE BOLTED TO SPECIAL END SHOE USING 5/8" DIA. HEAD BOLTS WITH 1/2" DIA. CON. STEEL WASHERS AND NUTS. SHALL BE GALVANIZED AND SHALL CONFORM TO SUBSECTION 807.05.



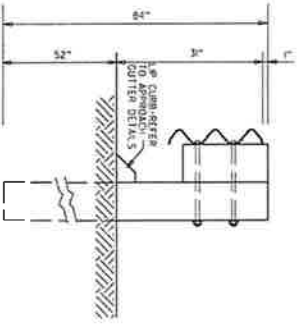
NOTE: SEE STANDARD DRAWING CR-9 FOR GUARD RAIL POST EMBEDMENT DETAILS.



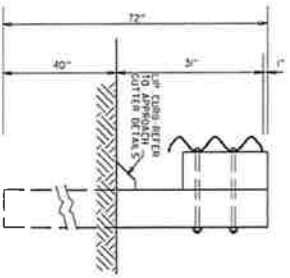
**THREE BEAM RAIL WITH STEEL TUBING BLOCKOUT AND STEEL POST**  
POSTS 1-7



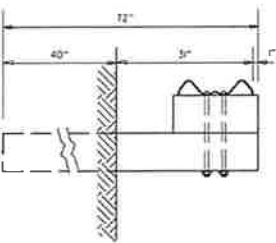
**W-BEAM TO THREE BEAM TRANSITION RAIL WITH WOOD OR PLASTIC BLOCKOUT AND STEEL POST**  
POST 8



**THREE BEAM RAIL WITH WOOD OR PLASTIC BLOCKOUTS & WOOD POSTS**  
POSTS 1-6



**THREE BEAM RAIL WITH WOOD OR PLASTIC BLOCKOUT & WOOD POST**  
POST 7



**W-BEAM TO THREE BEAM TRANSITION RAIL WITH WOOD OR PLASTIC BLOCKOUT & WOOD POST**  
POST 8

GENERAL NOTES:  
RAIL POSTS SHALL BE SET PERPENDICULAR TO THE ROADWAY PROFILE GRADE AND VERTICALLY IN CROSS SECTION.  
WOOD POSTS & WOOD BLOCKS SHALL BE EITHER DENISE NO. 1 STRUCTURAL OR BETTER 9.174 HMOB #1 OR NO. 1 D50 ♀ SOUTHERN PINE.

REVISION	DATE	BY	CHKD	APP'D	FILED
1	10/1/11	REVISION			
2	10/1/11	REVISION			
3	10/1/11	REVISION			
4	10/1/11	REVISION			
5	10/1/11	REVISION			
6	10/1/11	REVISION			
7	10/1/11	REVISION			
8	10/1/11	REVISION			
9	10/1/11	REVISION			
10	10/1/11	REVISION			
11	10/1/11	REVISION			
12	10/1/11	REVISION			
13	10/1/11	REVISION			
14	10/1/11	REVISION			
15	10/1/11	REVISION			
16	10/1/11	REVISION			
17	10/1/11	REVISION			
18	10/1/11	REVISION			
19	10/1/11	REVISION			
20	10/1/11	REVISION			
21	10/1/11	REVISION			
22	10/1/11	REVISION			
23	10/1/11	REVISION			
24	10/1/11	REVISION			
25	10/1/11	REVISION			
26	10/1/11	REVISION			
27	10/1/11	REVISION			
28	10/1/11	REVISION			
29	10/1/11	REVISION			
30	10/1/11	REVISION			
31	10/1/11	REVISION			
32	10/1/11	REVISION			
33	10/1/11	REVISION			
34	10/1/11	REVISION			
35	10/1/11	REVISION			
36	10/1/11	REVISION			
37	10/1/11	REVISION			
38	10/1/11	REVISION			
39	10/1/11	REVISION			
40	10/1/11	REVISION			
41	10/1/11	REVISION			
42	10/1/11	REVISION			
43	10/1/11	REVISION			
44	10/1/11	REVISION			
45	10/1/11	REVISION			
46	10/1/11	REVISION			
47	10/1/11	REVISION			
48	10/1/11	REVISION			
49	10/1/11	REVISION			
50	10/1/11	REVISION			
51	10/1/11	REVISION			
52	10/1/11	REVISION			
53	10/1/11	REVISION			
54	10/1/11	REVISION			
55	10/1/11	REVISION			
56	10/1/11	REVISION			
57	10/1/11	REVISION			
58	10/1/11	REVISION			
59	10/1/11	REVISION			
60	10/1/11	REVISION			
61	10/1/11	REVISION			
62	10/1/11	REVISION			
63	10/1/11	REVISION			
64	10/1/11	REVISION			
65	10/1/11	REVISION			
66	10/1/11	REVISION			
67	10/1/11	REVISION			
68	10/1/11	REVISION			
69	10/1/11	REVISION			
70	10/1/11	REVISION			
71	10/1/11	REVISION			
72	10/1/11	REVISION			
73	10/1/11	REVISION			
74	10/1/11	REVISION			
75	10/1/11	REVISION			
76	10/1/11	REVISION			
77	10/1/11	REVISION			
78	10/1/11	REVISION			
79	10/1/11	REVISION			
80	10/1/11	REVISION			
81	10/1/11	REVISION			
82	10/1/11	REVISION			
83	10/1/11	REVISION			
84	10/1/11	REVISION			
85	10/1/11	REVISION			
86	10/1/11	REVISION			
87	10/1/11	REVISION			
88	10/1/11	REVISION			
89	10/1/11	REVISION			
90	10/1/11	REVISION			
91	10/1/11	REVISION			
92	10/1/11	REVISION			
93	10/1/11	REVISION			
94	10/1/11	REVISION			
95	10/1/11	REVISION			
96	10/1/11	REVISION			
97	10/1/11	REVISION			
98	10/1/11	REVISION			
99	10/1/11	REVISION			
100	10/1/11	REVISION			

ARKANSAS STATE HIGHWAY COMMISSION  
GUARD RAIL DETAILS  
STANDARD DRAWING CR-II

<p>STANDARD EXPRESSWAY SPECIAL</p> <p>RI-1</p>	<p>STANDARD EXPRESSWAY SPECIAL</p> <p>RI-2</p>	<p>STANDARD EXPRESSWAY SPECIAL</p> <p>RI-1</p>	<p>STANDARD EXPRESSWAY SPECIAL</p> <p>RI-1</p>	<p>STANDARD EXPRESSWAY SPECIAL</p> <p>RI-1</p>	<p>STANDARD EXPRESSWAY SPECIAL</p> <p>RI-1</p>	<p>STANDARD EXPRESSWAY SPECIAL</p> <p>RI-1</p>	<p>STANDARD EXPRESSWAY SPECIAL</p> <p>GENERAL NOTES</p> <ol style="list-style-type: none"> <li>ALL TRAFFIC CONTROL DEVICES USED ON ROAD CONSTRUCTION SHALL CONFORM TO STANDARD DRAWING R-100, LATEST EDITION, OR AS APPROVED BY THE HIGHWAY ADMINISTRATION.</li> <li>TRAFFIC CONTROL DEVICES SHALL BE SET UP JUST BEFORE THE START OF CONSTRUCTION EXIST, THEY SHALL REMAIN IN PLACE ONLY AS LONG AS NEEDED AND REMOVED THEREAFTER.</li> <li>EXISTING SIGNS AND CONSTRUCTION SIGNS SHALL BE KEPT IN PROPER POSITION AND BE REPAIRED AS NEEDED FOR THE DURATION OF THE JOB. THERE SHALL NOT BE MORE THAN ONE SIGN PER APPROVED CONSTRUCTION SIGNAL. SIGNS THAT ARE DAMAGED, DEFACED, OR THAT ACCUMULATE DIRT OR OTHER DEBRIS SHALL BE CLEANED, REPAIRED, OR REPLACED.</li> <li>SIGNS ARE USUALLY MOUNTED ON A SINGLE POST. HOWEVER, THOSE WHICH ARE 36" OR LARGER THAN 30" FT. SHALL BE MOUNTED ON TWO POSTS OR ABOVE A TYPE B BARRICADE.</li> <li>SIGN POSTS DIRECT BARRICADE IN SIGN SHALL BE 2.13 LAMINAR CHANNEL POST OR 4"x6" WOOD POSTS. CHANNEL POSTS SHALL BE PAINTED GREEN. WOOD POSTS SHALL BE PAINTED WHITE. ALL POSTS SHALL BE NEATLY CONSTRUCTED, AND SHALL BE REPAIRED, CLEANED, OR REPAIRED AS NEEDED FOR THE DURATION OF THE JOB. THERE SHALL NOT BE MORE THAN ONE SIGN PER APPROVED CONSTRUCTION SIGNAL. CHANNEL POST SHADES SHALL BE IN ACCORDANCE WITH STANDARD DRAWING TC-31.</li> <li>POST MOUNTED SIGNS IN URBAN AREAS SHALL BE CONSTRUCTED WITH THE NEAR EDGE OF THE SIGN FROM 6 TO 12 FEET FROM THE PAVEMENT EDGE. SIGNS IN URBAN AREAS AND BARRICADE MOUNTED SIGNS SHALL BE MOUNTED A MINIMUM OF 2 FEET FROM THE PAVEMENT EDGE.</li> <li>ALL POST AND BARRICADE MOUNTED SIGNS MOUNTED IN URBAN AREAS SHALL BE MOUNTED A MINIMUM DISTANCE OF 7 FEET FROM THE SIGN TO THE ROADWAY SURFACE. A MINIMUM DISTANCE OF 10 FEET SHALL BE MAINTAINED ON THE ROADWAY SURFACE EXCEPT A MINIMUM OF 6 FEET SHALL BE MAINTAINED WHEN MOUNTING AN ADVISORY SIGN BELOW A WARNING SIGN. TEMPORARY SIGNS MAY BE MOUNTED ON PORTABLE SUPPORTS FOR HEIGHT SHALL BE 5'. RETROREFLECTIVE DEVICES SHALL BE USED. TEMPORARY SIGNS MAY BE MOUNTED ON PORTABLE SUPPORTS FOR SHORT-TERM, SHORT DURATION, AND MOBILE WORK CONDITIONS. THEY SHALL BE NO LESS THAN ONE (1) FOOT ABOVE THE TRAVELED WAY, BE SET BACK A MINIMUM OF 10 FEET FROM THE TRAVELED WAY, AND BE SET BACK A MINIMUM OF 500 FEET FROM THE TRAVELED WAY. SIGNS SHALL BE SET BACK A MINIMUM OF 500 FEET FROM THE TRAVELED WAY. SIGNS SHALL BE SET BACK A MINIMUM OF 500 FEET FROM THE TRAVELED WAY. SIGNS SHALL BE SET BACK A MINIMUM OF 500 FEET FROM THE TRAVELED WAY.</li> <li>ALL SIGNS SHALL BE SET BACK A MINIMUM OF 500 FEET FROM THE TRAVELED WAY. SIGNS SHALL BE SET BACK A MINIMUM OF 500 FEET FROM THE TRAVELED WAY. SIGNS SHALL BE SET BACK A MINIMUM OF 500 FEET FROM THE TRAVELED WAY.</li> </ol>
<p>STANDARD EXPRESSWAY SPECIAL</p> <p>WI-3</p>	<p>STANDARD EXPRESSWAY SPECIAL</p> <p>WI-4</p>	<p>STANDARD EXPRESSWAY SPECIAL</p> <p>WI-5</p>	<p>STANDARD EXPRESSWAY SPECIAL</p> <p>WI-6</p>	<p>STANDARD EXPRESSWAY SPECIAL</p> <p>WI-1</p>	<p>STANDARD EXPRESSWAY SPECIAL</p> <p>WI-2</p>	<p>STANDARD EXPRESSWAY SPECIAL</p> <p>WI-3</p>	
<p>STANDARD EXPRESSWAY SPECIAL</p> <p>WI-1</p>	<p>STANDARD EXPRESSWAY SPECIAL</p> <p>WI-2</p>	<p>STANDARD EXPRESSWAY SPECIAL</p> <p>WI-1</p>	<p>STANDARD EXPRESSWAY SPECIAL</p> <p>WI-1</p>	<p>STANDARD EXPRESSWAY SPECIAL</p> <p>WI-1</p>	<p>STANDARD EXPRESSWAY SPECIAL</p> <p>WI-1</p>	<p>STANDARD EXPRESSWAY SPECIAL</p> <p>WI-1</p>	
<p>STANDARD EXPRESSWAY SPECIAL</p> <p>WI-1</p>	<p>STANDARD EXPRESSWAY SPECIAL</p> <p>WI-1</p>	<p>STANDARD EXPRESSWAY SPECIAL</p> <p>WI-1</p>	<p>STANDARD EXPRESSWAY SPECIAL</p> <p>WI-1</p>	<p>STANDARD EXPRESSWAY SPECIAL</p> <p>WI-1</p>	<p>STANDARD EXPRESSWAY SPECIAL</p> <p>WI-1</p>	<p>STANDARD EXPRESSWAY SPECIAL</p> <p>WI-1</p>	
<p>STANDARD EXPRESSWAY SPECIAL</p> <p>WI-1</p>	<p>STANDARD EXPRESSWAY SPECIAL</p> <p>WI-1</p>	<p>STANDARD EXPRESSWAY SPECIAL</p> <p>WI-1</p>	<p>STANDARD EXPRESSWAY SPECIAL</p> <p>WI-1</p>	<p>STANDARD EXPRESSWAY SPECIAL</p> <p>WI-1</p>	<p>STANDARD EXPRESSWAY SPECIAL</p> <p>WI-1</p>	<p>STANDARD EXPRESSWAY SPECIAL</p> <p>WI-1</p>	
<p>STANDARD EXPRESSWAY SPECIAL</p> <p>WI-1</p>	<p>STANDARD EXPRESSWAY SPECIAL</p> <p>WI-1</p>	<p>STANDARD EXPRESSWAY SPECIAL</p> <p>WI-1</p>	<p>STANDARD EXPRESSWAY SPECIAL</p> <p>WI-1</p>	<p>STANDARD EXPRESSWAY SPECIAL</p> <p>WI-1</p>	<p>STANDARD EXPRESSWAY SPECIAL</p> <p>WI-1</p>	<p>STANDARD EXPRESSWAY SPECIAL</p> <p>WI-1</p>	
<p>STANDARD EXPRESSWAY SPECIAL</p> <p>WI-1</p>	<p>STANDARD EXPRESSWAY SPECIAL</p> <p>WI-1</p>	<p>STANDARD EXPRESSWAY SPECIAL</p> <p>WI-1</p>	<p>STANDARD EXPRESSWAY SPECIAL</p> <p>WI-1</p>	<p>STANDARD EXPRESSWAY SPECIAL</p> <p>WI-1</p>	<p>STANDARD EXPRESSWAY SPECIAL</p> <p>WI-1</p>	<p>STANDARD EXPRESSWAY SPECIAL</p> <p>WI-1</p>	
<p>STANDARD EXPRESSWAY SPECIAL</p> <p>WI-1</p>	<p>STANDARD EXPRESSWAY SPECIAL</p> <p>WI-1</p>	<p>STANDARD EXPRESSWAY SPECIAL</p> <p>WI-1</p>	<p>STANDARD EXPRESSWAY SPECIAL</p> <p>WI-1</p>	<p>STANDARD EXPRESSWAY SPECIAL</p> <p>WI-1</p>	<p>STANDARD EXPRESSWAY SPECIAL</p> <p>WI-1</p>	<p>STANDARD EXPRESSWAY SPECIAL</p> <p>WI-1</p>	
<p>STANDARD EXPRESSWAY SPECIAL</p> <p>WI-1</p>	<p>STANDARD EXPRESSWAY SPECIAL</p> <p>WI-1</p>	<p>STANDARD EXPRESSWAY SPECIAL</p> <p>WI-1</p>	<p>STANDARD EXPRESSWAY SPECIAL</p> <p>WI-1</p>	<p>STANDARD EXPRESSWAY SPECIAL</p> <p>WI-1</p>	<p>STANDARD EXPRESSWAY SPECIAL</p> <p>WI-1</p>	<p>STANDARD EXPRESSWAY SPECIAL</p> <p>WI-1</p>	
<p>STANDARD EXPRESSWAY SPECIAL</p> <p>WI-1</p>	<p>STANDARD EXPRESSWAY SPECIAL</p> <p>WI-1</p>	<p>STANDARD EXPRESSWAY SPECIAL</p> <p>WI-1</p>	<p>STANDARD EXPRESSWAY SPECIAL</p> <p>WI-1</p>	<p>STANDARD EXPRESSWAY SPECIAL</p> <p>WI-1</p>	<p>STANDARD EXPRESSWAY SPECIAL</p> <p>WI-1</p>	<p>STANDARD EXPRESSWAY SPECIAL</p> <p>WI-1</p>	
<p>STANDARD EXPRESSWAY SPECIAL</p> <p>WI-1</p>	<p>STANDARD EXPRESSWAY SPECIAL</p> <p>WI-1</p>	<p>STANDARD EXPRESSWAY SPECIAL</p> <p>WI-1</p>	<p>STANDARD EXPRESSWAY SPECIAL</p> <p>WI-1</p>	<p>STANDARD EXPRESSWAY SPECIAL</p> <p>WI-1</p>	<p>STANDARD EXPRESSWAY SPECIAL</p> <p>WI-1</p>	<p>STANDARD EXPRESSWAY SPECIAL</p> <p>WI-1</p>	

ADVANCE DISTANCES	
(XXXX)	(XXXX)
500 FT	1/2 MILE
1000 FT	3/4 MILE
1500 FT	1 MILE
AHEAD	AHEAD

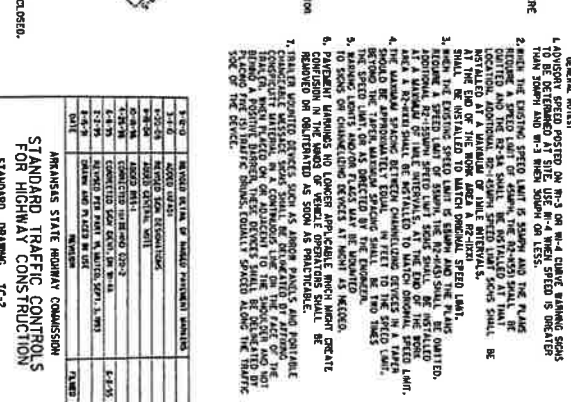
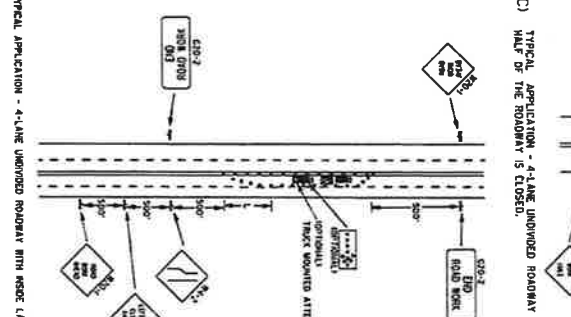
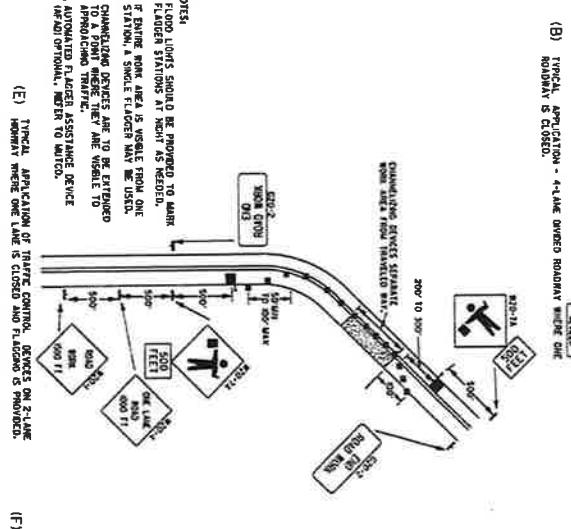
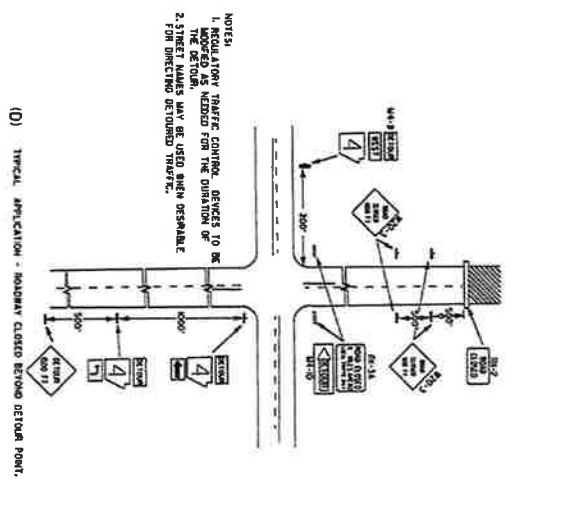
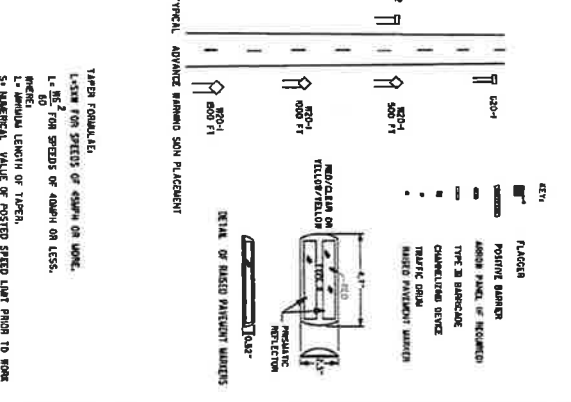
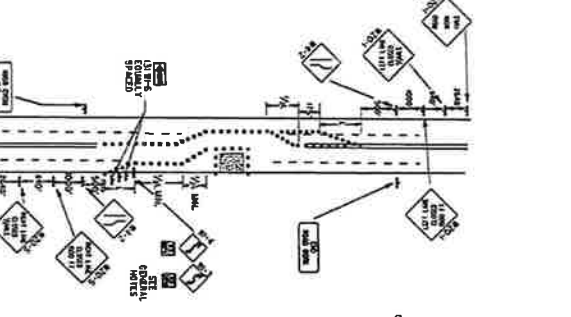
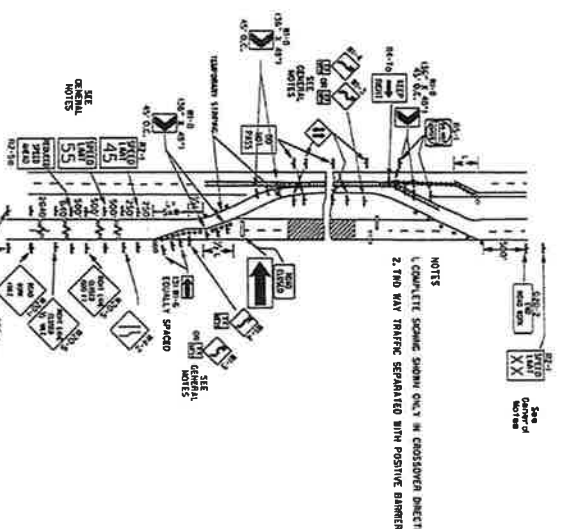
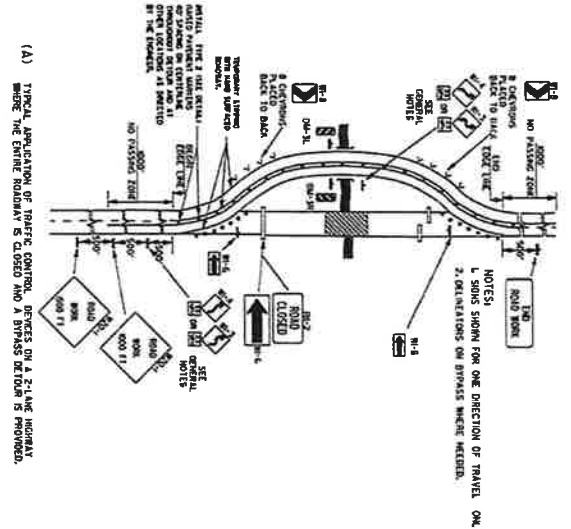
STANDARD TRAFFIC CONTROLS FOR HIGHWAY CONSTRUCTION STANDARD DRAWING 1C-1

ARKANSAS STATE HIGHWAY COMMISSION

STANDARD TRAFFIC CONTROLS FOR HIGHWAY CONSTRUCTION STANDARD DRAWING 1C-1

36"x60" \*\* USE 6" C LETTERS \*\* USE 4" D LETTERS

STANDARD TRAFFIC CONTROLS FOR HIGHWAY CONSTRUCTION STANDARD DRAWING 1C-1



NOTES:  
 1. REGULATORY TRAFFIC CONTROL DEVICES TO BE USED AS SHOWN ARE REQUIRED FOR THE POSITION OF THE DETOUR.  
 2. STREET NAMES MAY BE USED WHEN DESIRABLE FOR DIRECTED DETOURED TRAFFIC.

NOTES:  
 1. SIGNS SHOWN FOR ONE DIRECTION OF TRAVEL ONLY.  
 2. ORIENTATIONS ON SIGNS WHERE NEEDED.

NOTES:  
 1. COMPLETE SIGNS SHOWN ONLY IN CROSSOVER DIRECTION.  
 2. TWO WAY TRAFFIC SEPARATED WITH POSITIVE BARRIERS.

NOTES:  
 1. FLOOD LIGHTS SHOULD BE PROVIDED TO MARK ROAD AHEAD CLOSED.  
 2. STATIONING MARKS SHOULD BE USED FROM ONE STATION TO SINGLE FLAGGER WAY BE USED.  
 3. CONNECTION DEVICES ARE TO BE SET THROUGH APPROACHING TRAFFIC.  
 4. APPROXIMATE FLAGGER ASSISTANCE DEVICE AND/OR OPTIONAL, REFER TO NOTES.

NOTES:  
 1. COMPLETE SIGNS SHOWN ONLY IN CROSSOVER DIRECTION.  
 2. TWO WAY TRAFFIC SEPARATED WITH POSITIVE BARRIERS.

NOTES:  
 1. FLOOD LIGHTS SHOULD BE PROVIDED TO MARK ROAD AHEAD CLOSED.  
 2. STATIONING MARKS SHOULD BE USED FROM ONE STATION TO SINGLE FLAGGER WAY BE USED.  
 3. CONNECTION DEVICES ARE TO BE SET THROUGH APPROACHING TRAFFIC.  
 4. APPROXIMATE FLAGGER ASSISTANCE DEVICE AND/OR OPTIONAL, REFER TO NOTES.

NOTES:  
 1. COMPLETE SIGNS SHOWN ONLY IN CROSSOVER DIRECTION.  
 2. TWO WAY TRAFFIC SEPARATED WITH POSITIVE BARRIERS.

NOTES:  
 1. FLOOD LIGHTS SHOULD BE PROVIDED TO MARK ROAD AHEAD CLOSED.  
 2. STATIONING MARKS SHOULD BE USED FROM ONE STATION TO SINGLE FLAGGER WAY BE USED.  
 3. CONNECTION DEVICES ARE TO BE SET THROUGH APPROACHING TRAFFIC.  
 4. APPROXIMATE FLAGGER ASSISTANCE DEVICE AND/OR OPTIONAL, REFER TO NOTES.

NOTES:  
 1. COMPLETE SIGNS SHOWN ONLY IN CROSSOVER DIRECTION.  
 2. TWO WAY TRAFFIC SEPARATED WITH POSITIVE BARRIERS.

NOTES:  
 1. FLOOD LIGHTS SHOULD BE PROVIDED TO MARK ROAD AHEAD CLOSED.  
 2. STATIONING MARKS SHOULD BE USED FROM ONE STATION TO SINGLE FLAGGER WAY BE USED.  
 3. CONNECTION DEVICES ARE TO BE SET THROUGH APPROACHING TRAFFIC.  
 4. APPROXIMATE FLAGGER ASSISTANCE DEVICE AND/OR OPTIONAL, REFER TO NOTES.

NOTES:  
 1. COMPLETE SIGNS SHOWN ONLY IN CROSSOVER DIRECTION.  
 2. TWO WAY TRAFFIC SEPARATED WITH POSITIVE BARRIERS.

NOTES:  
 1. FLOOD LIGHTS SHOULD BE PROVIDED TO MARK ROAD AHEAD CLOSED.  
 2. STATIONING MARKS SHOULD BE USED FROM ONE STATION TO SINGLE FLAGGER WAY BE USED.  
 3. CONNECTION DEVICES ARE TO BE SET THROUGH APPROACHING TRAFFIC.  
 4. APPROXIMATE FLAGGER ASSISTANCE DEVICE AND/OR OPTIONAL, REFER TO NOTES.

NOTES:  
 1. COMPLETE SIGNS SHOWN ONLY IN CROSSOVER DIRECTION.  
 2. TWO WAY TRAFFIC SEPARATED WITH POSITIVE BARRIERS.

NOTES:  
 1. FLOOD LIGHTS SHOULD BE PROVIDED TO MARK ROAD AHEAD CLOSED.  
 2. STATIONING MARKS SHOULD BE USED FROM ONE STATION TO SINGLE FLAGGER WAY BE USED.  
 3. CONNECTION DEVICES ARE TO BE SET THROUGH APPROACHING TRAFFIC.  
 4. APPROXIMATE FLAGGER ASSISTANCE DEVICE AND/OR OPTIONAL, REFER TO NOTES.

NOTES:  
 1. COMPLETE SIGNS SHOWN ONLY IN CROSSOVER DIRECTION.  
 2. TWO WAY TRAFFIC SEPARATED WITH POSITIVE BARRIERS.

NOTES:  
 1. FLOOD LIGHTS SHOULD BE PROVIDED TO MARK ROAD AHEAD CLOSED.  
 2. STATIONING MARKS SHOULD BE USED FROM ONE STATION TO SINGLE FLAGGER WAY BE USED.  
 3. CONNECTION DEVICES ARE TO BE SET THROUGH APPROACHING TRAFFIC.  
 4. APPROXIMATE FLAGGER ASSISTANCE DEVICE AND/OR OPTIONAL, REFER TO NOTES.

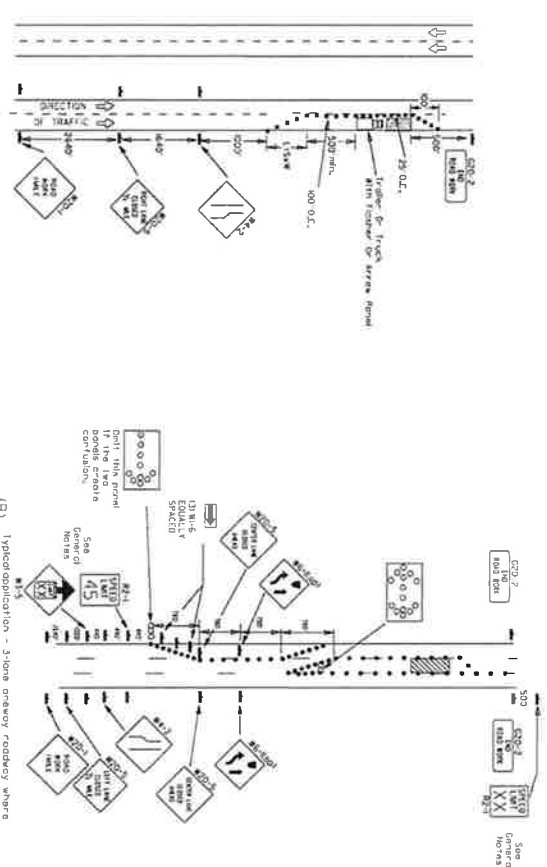
NOTES:  
 1. COMPLETE SIGNS SHOWN ONLY IN CROSSOVER DIRECTION.  
 2. TWO WAY TRAFFIC SEPARATED WITH POSITIVE BARRIERS.

NOTES:  
 1. FLOOD LIGHTS SHOULD BE PROVIDED TO MARK ROAD AHEAD CLOSED.  
 2. STATIONING MARKS SHOULD BE USED FROM ONE STATION TO SINGLE FLAGGER WAY BE USED.  
 3. CONNECTION DEVICES ARE TO BE SET THROUGH APPROACHING TRAFFIC.  
 4. APPROXIMATE FLAGGER ASSISTANCE DEVICE AND/OR OPTIONAL, REFER TO NOTES.

TYPE	MINIMUM WIDTH OF ROADWAY	MINIMUM SPACING
1-1	14 FT	10 FT
1-2	14 FT	10 FT
1-3	14 FT	10 FT
1-4	14 FT	10 FT
1-5	14 FT	10 FT
1-6	14 FT	10 FT
1-7	14 FT	10 FT
1-8	14 FT	10 FT
1-9	14 FT	10 FT
1-10	14 FT	10 FT
1-11	14 FT	10 FT
1-12	14 FT	10 FT
1-13	14 FT	10 FT
1-14	14 FT	10 FT
1-15	14 FT	10 FT
1-16	14 FT	10 FT
1-17	14 FT	10 FT
1-18	14 FT	10 FT
1-19	14 FT	10 FT
1-20	14 FT	10 FT
1-21	14 FT	10 FT
1-22	14 FT	10 FT
1-23	14 FT	10 FT
1-24	14 FT	10 FT
1-25	14 FT	10 FT
1-26	14 FT	10 FT
1-27	14 FT	10 FT
1-28	14 FT	10 FT
1-29	14 FT	10 FT
1-30	14 FT	10 FT
1-31	14 FT	10 FT
1-32	14 FT	10 FT
1-33	14 FT	10 FT
1-34	14 FT	10 FT
1-35	14 FT	10 FT
1-36	14 FT	10 FT
1-37	14 FT	10 FT
1-38	14 FT	10 FT
1-39	14 FT	10 FT
1-40	14 FT	10 FT
1-41	14 FT	10 FT
1-42	14 FT	10 FT
1-43	14 FT	10 FT
1-44	14 FT	10 FT
1-45	14 FT	10 FT
1-46	14 FT	10 FT
1-47	14 FT	10 FT
1-48	14 FT	10 FT
1-49	14 FT	10 FT
1-50	14 FT	10 FT

ARKANSAS STATE HIGHWAY COMMISSION  
 STANDARD TRAFFIC CONTROL  
 FOR HIGHWAY CONSTRUCTION  
 STANDARD DRAWING TC-2

Channelizing devices

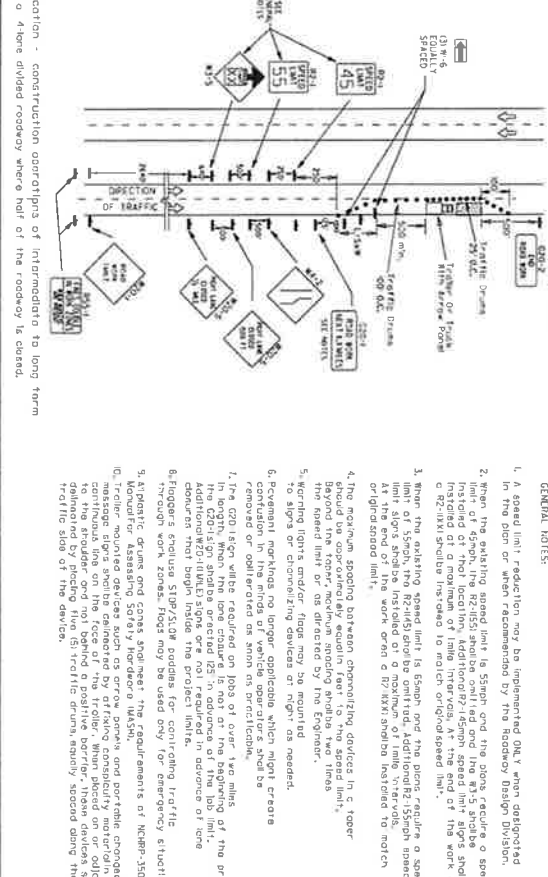


(A) Typical application - single-lane roadway closure where half of the roadway is closed.

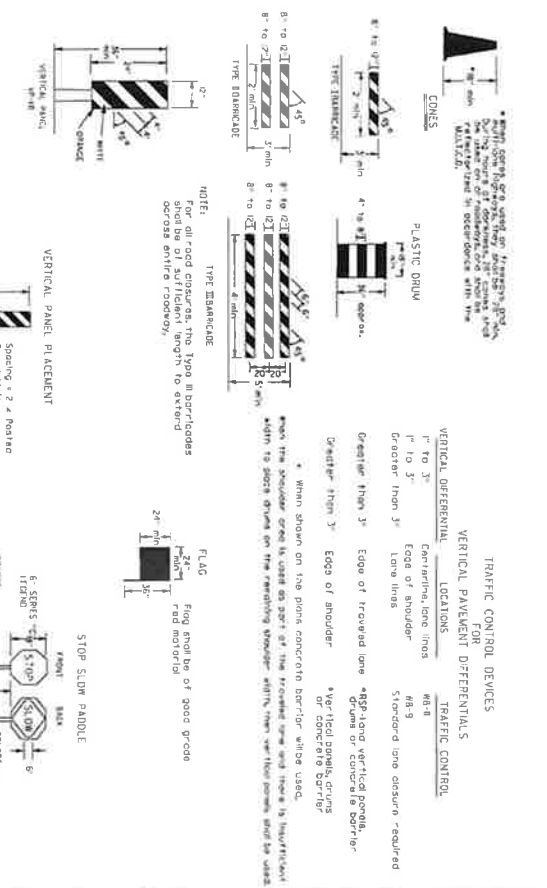
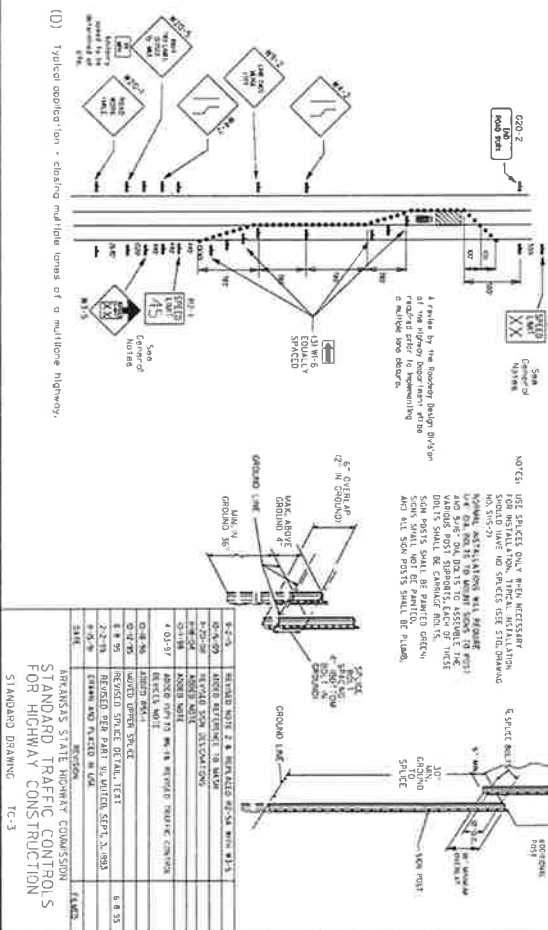
(B) Typical application - 3-lane roadway where center lane is closed.

- GENERAL NOTES:
- A speed limit reduction sign should be implemented only when applicable in the zone or when recommended by the Roadway Design Division.
  - When the existing speed limit is 55 mph and the zone requires a speed limit of 45 mph, the speed limit sign should be replaced with a speed limit sign of a maximum of 45 mph. At the end of the work zone, the speed limit sign should be replaced with the original speed limit.
  - When the existing speed limit is 55 mph and the zone requires a speed limit of 30 mph, the speed limit sign should be replaced with a speed limit sign of a maximum of 30 mph. At the end of the work zone or at the station located to match the original speed limit.
  - The maximum spacing between channelizing devices in a taper should be governed by a speed limit sign to speed limit sign distance table as directed by the Engineer.
  - Warning lights or flashing lights may be required.
  - Permanent markings, no longer applicable when night cones are used, should be removed or obliterated as soon as practicable.
  - The cones should be reduced on a job of over 100 miles in length when the lane closure is not at the beginning of the project. The distance between cones should be 125 ft or more of the job limit, and should be reduced to 50 ft at the end of the project.
  - Flaggers should use STOP/SLOW paddles for emergency situations.
  - At night, orange and yellow reflective vests, and portable repeater reflectors should be used for visibility. The reflective vest should be worn at all times and the reflective vest should be worn at all times when working in the work zone. The reflective vest should be worn at all times when working in the work zone. The reflective vest should be worn at all times when working in the work zone.

(C) Typical application - construction overpass at interchange for long term duration on a three-lane roadway where half of the roadway is closed.



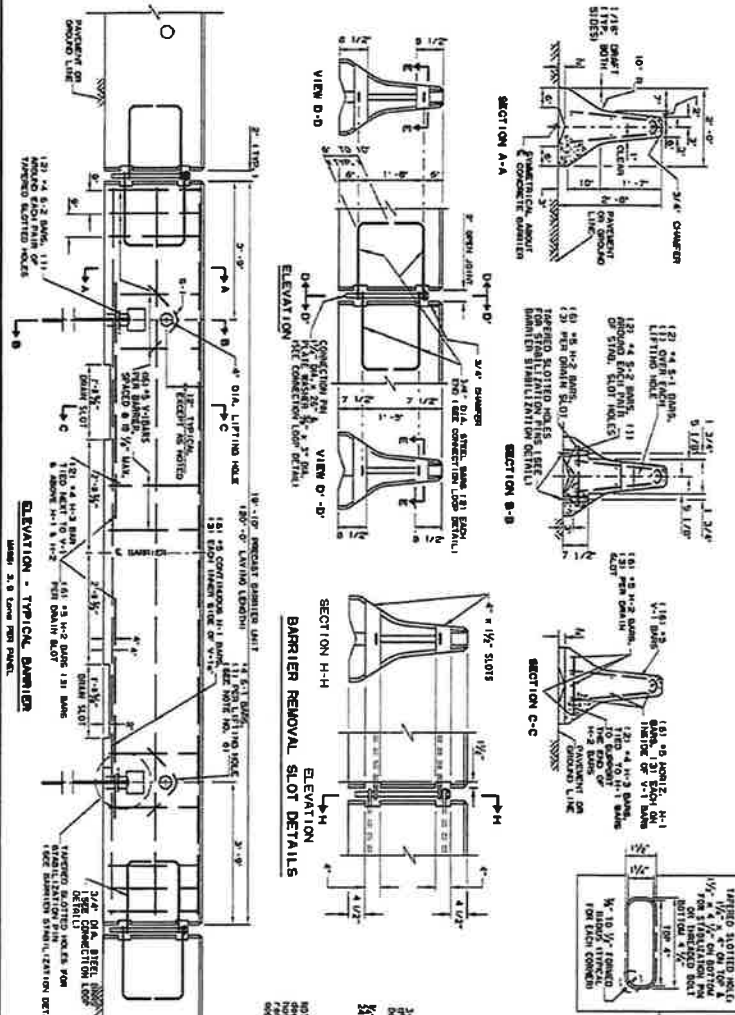
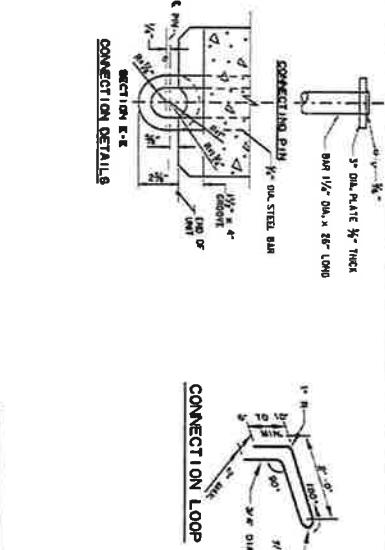
(D) Typical application - closing and lane items of a multiple highway.



ARIZONA STATE HIGHWAY COMMISSION  
STANDARD TRAFFIC CONTROL  
FOR HIGHWAY CONSTRUCTION  
TC-3

SIGN	DESCRIPTION	QUANTITY
G20-2	ROAD AHEAD	2
G21-1	AHEAD	2
G21-2	ROAD NARROW	2
G21-3	AHEAD	2
G21-4	AHEAD	2
G21-5	AHEAD	2
G21-6	AHEAD	2
G21-7	AHEAD	2
G21-8	AHEAD	2
G21-9	AHEAD	2
G21-10	AHEAD	2
G21-11	AHEAD	2
G21-12	AHEAD	2
G21-13	AHEAD	2
G21-14	AHEAD	2
G21-15	AHEAD	2
G21-16	AHEAD	2
G21-17	AHEAD	2
G21-18	AHEAD	2
G21-19	AHEAD	2
G21-20	AHEAD	2
G21-21	AHEAD	2
G21-22	AHEAD	2
G21-23	AHEAD	2
G21-24	AHEAD	2
G21-25	AHEAD	2
G21-26	AHEAD	2
G21-27	AHEAD	2
G21-28	AHEAD	2
G21-29	AHEAD	2
G21-30	AHEAD	2

SECTION	LOCATION	SCALE	NO. SHEETS	TOTAL SHEETS
1-1	SECTION A-A	1/8" = 1'-0"	1	10
2-2	SECTION B-B	1/8" = 1'-0"	1	10
3-3	SECTION C-C	1/8" = 1'-0"	1	10
4-4	SECTION D-D	1/8" = 1'-0"	1	10
5-5	SECTION E-E	1/8" = 1'-0"	1	10
6-6	SECTION F-F	1/8" = 1'-0"	1	10



**1** The contractor shall furnish the Precast Concrete Barrier Unit and place and remove it at the location of the project. The contractor shall be responsible for the protection of the project. The contractor shall be responsible for the protection of the project.

**2** The contractor shall meet the following minimum requirements:

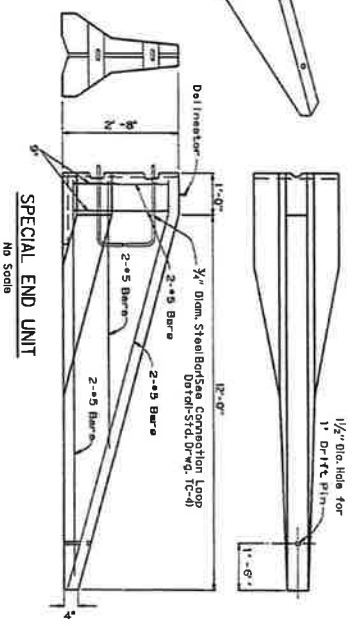
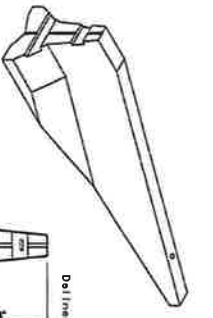
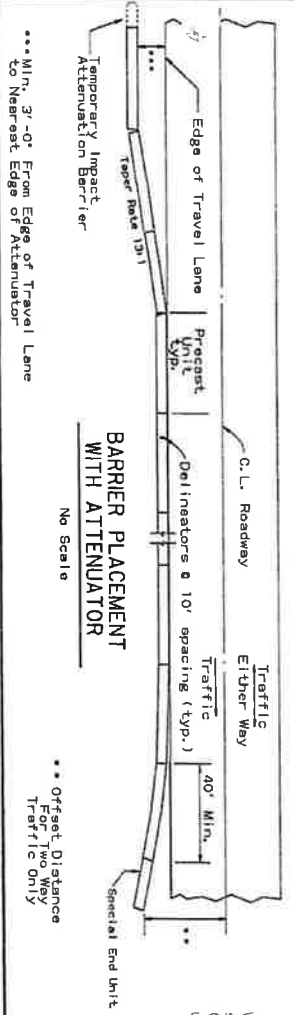
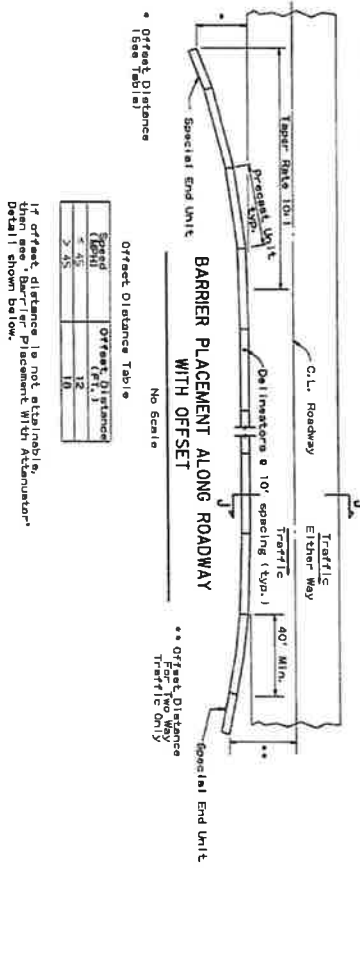
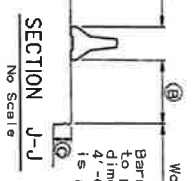
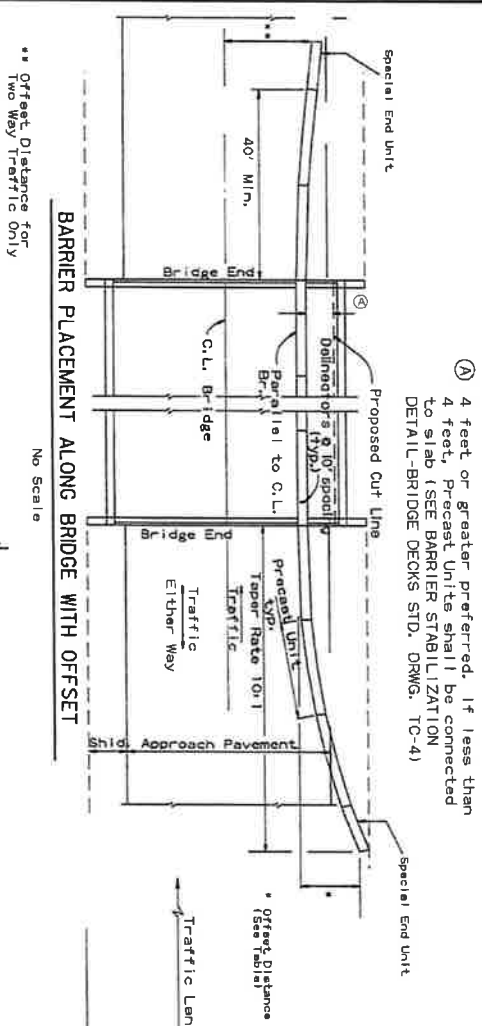
- Concrete shall have a compressive strength of 28 days.
- Concrete shall be placed in the form and finished in accordance with the specifications.
- Concrete shall be placed in the form and finished in accordance with the specifications.

**3** The contractor shall meet the following minimum requirements:

- Concrete shall have a compressive strength of 28 days.
- Concrete shall be placed in the form and finished in accordance with the specifications.
- Concrete shall be placed in the form and finished in accordance with the specifications.

SECTION	LOCATION	SCALE	NO. SHEETS	TOTAL SHEETS
1-1	SECTION A-A	1/8" = 1'-0"	1	10
2-2	SECTION B-B	1/8" = 1'-0"	1	10
3-3	SECTION C-C	1/8" = 1'-0"	1	10
4-4	SECTION D-D	1/8" = 1'-0"	1	10
5-5	SECTION E-E	1/8" = 1'-0"	1	10
6-6	SECTION F-F	1/8" = 1'-0"	1	10

(A) 4 feet or greater preferred. If less than 4 feet, Precast Units shall be connected to slab (SEE BARRIER STABILIZATION DETAIL-BRIDGE DECKS STD. DRWG. TC-4)



General Notes:  
 When shown on the Plans, the ends of the Temporary Precast Concrete Barrier shall be protected with an NCHRP-350 or Manual for Assessing Safety Hardware (MASH) approved Crash Cushion. Payment for Crash Cushions shall be made under the item of Temporary Impact Attenuation Barrier.

NO.	REVISION	DATE	BY	CHKD.	APPV.	DESCRIPTION
01-03	ADD REFERENCE TO WASH					
02-04	REVISION NUMBER INCREASED					
03-05	ADD NEW SECTION					
04-06	ADD NEW SECTION					
05-07	ADD NEW SECTION					
06-08	ADD NEW SECTION					
07-09	ADD NEW SECTION					
08-10	ADD NEW SECTION					
09-11	ADD NEW SECTION					
10-12	ADD NEW SECTION					
11-13	ADD NEW SECTION					
12-14	ADD NEW SECTION					
13-15	ADD NEW SECTION					
14-16	ADD NEW SECTION					
15-17	ADD NEW SECTION					
16-18	ADD NEW SECTION					
17-19	ADD NEW SECTION					
18-20	ADD NEW SECTION					
19-21	ADD NEW SECTION					
20-22	ADD NEW SECTION					
21-23	ADD NEW SECTION					
22-24	ADD NEW SECTION					
23-25	ADD NEW SECTION					
24-26	ADD NEW SECTION					
25-27	ADD NEW SECTION					
26-28	ADD NEW SECTION					
27-29	ADD NEW SECTION					
28-30	ADD NEW SECTION					
29-31	ADD NEW SECTION					
30-32	ADD NEW SECTION					
31-33	ADD NEW SECTION					
32-34	ADD NEW SECTION					
33-35	ADD NEW SECTION					
34-36	ADD NEW SECTION					
35-37	ADD NEW SECTION					
36-38	ADD NEW SECTION					
37-39	ADD NEW SECTION					
38-40	ADD NEW SECTION					
39-41	ADD NEW SECTION					
40-42	ADD NEW SECTION					
41-43	ADD NEW SECTION					
42-44	ADD NEW SECTION					
43-45	ADD NEW SECTION					
44-46	ADD NEW SECTION					
45-47	ADD NEW SECTION					
46-48	ADD NEW SECTION					
47-49	ADD NEW SECTION					
48-50	ADD NEW SECTION					
49-51	ADD NEW SECTION					
50-52	ADD NEW SECTION					
51-53	ADD NEW SECTION					
52-54	ADD NEW SECTION					
53-55	ADD NEW SECTION					
54-56	ADD NEW SECTION					
55-57	ADD NEW SECTION					
56-58	ADD NEW SECTION					
57-59	ADD NEW SECTION					
58-60	ADD NEW SECTION					
59-61	ADD NEW SECTION					
60-62	ADD NEW SECTION					
61-63	ADD NEW SECTION					
62-64	ADD NEW SECTION					
63-65	ADD NEW SECTION					
64-66	ADD NEW SECTION					
65-67	ADD NEW SECTION					
66-68	ADD NEW SECTION					
67-69	ADD NEW SECTION					
68-70	ADD NEW SECTION					
69-71	ADD NEW SECTION					
70-72	ADD NEW SECTION					
71-73	ADD NEW SECTION					
72-74	ADD NEW SECTION					
73-75	ADD NEW SECTION					
74-76	ADD NEW SECTION					
75-77	ADD NEW SECTION					
76-78	ADD NEW SECTION					
77-79	ADD NEW SECTION					
78-80	ADD NEW SECTION					
79-81	ADD NEW SECTION					
80-82	ADD NEW SECTION					
81-83	ADD NEW SECTION					
82-84	ADD NEW SECTION					
83-85	ADD NEW SECTION					
84-86	ADD NEW SECTION					
85-87	ADD NEW SECTION					
86-88	ADD NEW SECTION					
87-89	ADD NEW SECTION					
88-90	ADD NEW SECTION					
89-91	ADD NEW SECTION					
90-92	ADD NEW SECTION					
91-93	ADD NEW SECTION					
92-94	ADD NEW SECTION					
93-95	ADD NEW SECTION					
94-96	ADD NEW SECTION					
95-97	ADD NEW SECTION					
96-98	ADD NEW SECTION					
97-99	ADD NEW SECTION					
98-100	ADD NEW SECTION					

ARKANSAS STATE HIGHWAY COMMISSION  
 STANDARD TRAFFIC CONTROLS  
 FOR HIGHWAY CONSTRUCTION -  
 TEMPORARY PRECAST BARRIER  
 STANDARD DRAWING TC-5



