

General Info

to **disable** Q & A notifications for this solicitation.

Digital ID required

Deadline

05/07/2024 11:00 AM CDT

Advertised

04/17/2024 03:10 PM CDT

Business Name

Arkansas Department of Transportation - Equipment and Procurement

Location(s)

11302 W Baseline Rd, Little Rock, Arkansas, 72209



County of Pulaski, AR, Esri, TomTom, Garmin, FAO, NOAA, USGS, EPA, NPS, USFWS

Powered by Esri

Number

M-24-033H

Description

Construction of Shop Awnings Equipment and Procurement Shop

Job 42-12

FOB: Little Rock

Allows zero unit prices and labor

Yes

Allows negative unit prices and labor

Yes

Allows multiple bids per solicitation

No

Q & A

Deadline

05/02/2024 03:00 PM CDT

Remarks

ATTACHMENT LIST

CONTRACT AND GRANT DISCLOSURE AND CERTIFICATION FORM.pdf (157 KB)

Download, complete, and upload in the Required Document List at the bottom of t...

Standard Bid Conditions Revised 2023.pdf (156 KB)

Certificate For Boycott and Illegal Immigrant Restrictions.pdf (174 KB)

Download, complete, and upload in the Required Document List at the bottom of t...

Project Manual Job 42-12.pdf (3.66 MB)

Drawings Job 42-12.pdf (235 KB)

BID INVITATION

Electronic Sealed bids for furnishing the commodities and/or services described below subject to the Standard Bid Conditions of this Bid Invitation will be publicly opened at the above-noted bid opening date and time at the ARDOT Equipment and Procurement Division located at 11302 West Baseline Road, Little Rock, AR 72209. Bids must be submitted on this form, with attachments when appropriate, or bids will be rejected.

In compliance with this Bid Invitation and subject to all the Conditions thereof, the undersigned offers and agrees to furnish any and all items upon which prices are quoted, at the price set opposite each item.

Company Name:*

Name:*

Address:*

Title:*

Federal Tax ID or Social Security No:*

Phone:*

Fax:

E-mail:*

Signature:*

Construction of new awnings for the ARDOT Equipment and Procurement Shop located at 11302 West Baseline Road, Little Rock, AR 72209.
Job 42-12

To meet the requirements of the Arkansas Department of Transportation Specifications attached to and made part of this bid.

For questions about Bidding requirements contact Danny Keene (501-569-2674)

For questions about job specifications contact Sherman Whittle (501-569-2154)

A mandatory pre-bid meeting is scheduled for all potential bidders at the ARDOT Equipment and Procurement Shop located at 11302 West Baseline Road, Little Rock, AR 72209 at 9:00 A.M. On May 1, 2024.

All bidders should complete and return the Eligible Bidder Certification (Attachment A) and Disclosure Form (see Page 2 of Standard Bid Conditions – Item 18) and Restriction of Boycott of Israel Certification issued with this bid. A current copy of the DFA Illegal Immigrant Contractor Disclosure Certification (see Page 1 of Standard Bid Conditions – Item 17) should also be submitted with bid.

Bid Bond in the amount of 5% of total bid price is required of all bidders at time of bid opening or bid will be rejected. **Personal and company checks are not acceptable as Bid Bonds. See Condition 4 on page 1 of Standard Bid Conditions.** Bid bonds that are not submitted electronically must be physically received by Equipment & Procurement located at 11302 West Baseline Road, Little Rock, AR 72209 prior to the designated time of the bid opening. Bid Invitation number should be clearly displayed on the sealed envelope or package. **Performance Bond only (no checks of any kind allowed) in the amount of 100% will be required of successful bidder prior to providing goods/services. See Condition 4 on page 1 of Standard Bid Conditions.**

Surety Bonds may be submitted electronically through the online bidding process. If submitting a Surety Bond that is not compatible with Surety 2000 and Tinubu, your company still may do so. Other Surety Companies will still be accepted but must be received in Equipment and Procurement at 11302 West Baseline Road, Little Rock, AR 72209 prior to the designated time of the bid opening. This includes Cashier's checks, Certified checks, or Money orders submitted as bid bonds must be physically received by Equipment & Procurement.

The successful bidder for this project will be required to obtain Builder's Risk Insurance coverage in a minimum amount equal to the total amount bid for all building facilities included in the contract, and to provide coverage for all existing structures on the job site.

On site work will not commence until all requested materials have been acquired and accumulated for inspection by ARDOT.
All work must be completed within 60 calendar days of commencement of work.

Current Arkansas Contractor's License Number must be listed or bid will be rejected. (A.C.A. 17-25-101 et. seq.)

Bid Information and Specifications are available on-line by going to the ARDOT Web Site – www.ardot.gov and clicking on "Commodities and Services Bids/Contracts Information". Tabulations will also be available at this site after award of bid/contract. If you have any questions, call this office at 501-569-2667.

BID SHEET

1. Construction of new awnings for the ARDOT Equipment and Procurement Shop located at 11302 West Baseline Road, Little Rock, AR 72209

Lump Sum*

\$

Arkansas Contractors License*

Notes

Notes

**ATTACHMENT A - ELIGIBLE
BIDDER CERTIFICATION**

The Bidder represents and warrants for itself, its employees and its subcontractors and certifies they:

1. Are not presently debarred, suspended, proposed for debarment, declared ineligible, or voluntarily excluded from covered transactions by any Federal department or agency;
2. Have not within a three-year period preceding this Bid been convicted of or had a civil judgment rendered against them for commission of fraud or a criminal offense in connection with obtaining, attempting to obtain, or performing a public (Federal, State, or local) transaction or contract under a public transaction; violation of Federal or State antitrust statutes or commission of embezzlement, theft, forgery, bribery, falsification or destruction of records, making false statements, or receiving stolen property;
3. Are not presently indicted for or otherwise criminally or civilly charged by a governmental entity (Federal, State, or local) with commission of any of the offenses enumerated in paragraph two (2) of this Certification;
4. Have not within a one-year period preceding this application/Bid had one or more public transactions (Federal, State, or local) terminated for cause or default; and

The Bidder represents, warrants and acknowledges the understanding that restrictions placed on the employment of labor or on the scale of pay for the work on a contract will be the requirements of the Fair Labor Standards Act (Federal Wage-Hour Law) of 1938, 28 USC §201 et seq., and other applicable labor laws.

The person executing this Certification further represents, warrants and affirms the truthfulness and accuracy of the contents of the statements submitted on or with this Certification and understands that the provisions of 31 USC §3801 et seq. are applicable thereto.

BIDDER NAME (Company Name):*

BY (Signature):*

TITLE:*

BID BOND

In the amount of 5%

Guarantee Method*

Choices...

Paper Bid Bond, Cashier's Check, Certified Check, Money Order, or an Annual Bond on File

Confirmation*

Choices...

Electronic Bid Bond

Bond ID*

Surety Agency*

Choices...

Surety State*

Principal*

ENVELOPE REQUIRED DOCUMENT LIST

Name

Omission Terms

The information supplied in this component will be available to the owner-agency immediately after the bid deadline, but before the bid is

1 Required Document

Name

Omission Terms

opened.

Paper Bid Bond, Cashier's Check, Certified Check, Money Order, or an Annual Bond on File
Original, wet-ink documents are required at time of bid opening or bid will be rejected.

I have opted to electronically verify my bid bond.

1 Required Document

REQUIRED DOCUMENT LIST

Name

Omission Terms

Contract and Grant Disclosure and Certification Form
Failure to complete all of the following information may result in a delay in obtaining a contract...

Certificate for Boycott and Illegal Immigrant Restrictions
Failure to complete all of the following information may result in a delay in obtaining a contract...

2 Required Documents

ARDOT - STANDARD BID CONDITIONS

1. **GENERAL:** Any special terms and conditions included in the invitation for bid override these standard terms and conditions. The standard terms and conditions and any special terms and conditions become part of any contract entered into if any or all parts of the bid are accepted by the Arkansas Department of Transportation (ARDOT).
2. **ACCEPTANCE AND REJECTION:** ARDOT reserves the right to reject any or all bids, to accept bids in whole or in part (unless otherwise indicated by bidder), to waive any informalities in bids received, to accept bids on materials or equipment with variations from specifications where efficiency of operation will not be impaired, and to award bids to best serve the interest of the State.
3. **PRICES:** Unless otherwise stated in the Bid Invitation, the following will apply: (1) unit prices shall be bid, (2) prices should be stated in units of quantity specified (feet, each, lbs., etc.), (3) prices must be F.O.B. destination specified in bid, (4) prices must be firm and not subject to escalation, (5) bid must be firm for acceptance for 30 days from bid opening date. In case of errors in extension, unit prices shall govern. Discounts from bid price will not be considered in making awards.
4. **BID BONDS AND PERFORMANCE BONDS:** If required, a **Bid Bond** in the form of a cashier's check, certified check, or surety bond issued by a surety company, in an amount stated in the Bid Invitation, must accompany bid. **Personal and company checks are not acceptable as Bid Bonds.** Surety Bonds may be submitted electronically through the online bidding process. Cashier's checks, Certified checks, or Money orders submitted as bid bonds must be physically received by Equipment & Procurement located at 11302 West Baseline Road, Little Rock, AR 72209 prior to the designated time of the bid opening. Failure to submit a Bid Bond as required will cause a bid to be rejected. The Bid Bond will be forfeited as liquidated damages if the successful bidder fails to provide a required Performance Bond within the period stipulated by ARDOT or fails to honor their bid. When a bidder claims and can show clear and convincing evidence that a material mistake was made in the bid and was not the bid intended, the bidder may be permitted to withdraw their bid prior to award without forfeiture of bid bond. Cashier's checks and certified checks submitted as Bid Bonds will be returned to unsuccessful bidders; surety bonds will be retained. The successful bidder will be required to furnish a **Performance Bond** in an amount stated in the Bid Invitation and in the form of a cashier's check, certified check, or surety bond issued by a surety company, unless otherwise stated in the Bid Invitation, as a guarantee of delivery of goods/services in accordance with the specifications and within the time established in the bid. **Personal and company checks are not acceptable as Performance Bonds.** In some cases, a cashier's check or certified check submitted as a Bid Bond will be held as the Performance Bond of the successful bidder. Cashier's checks or certified checks submitted as Performance Bonds will be refunded shortly after payment has been made to the successful bidder for completion of all terms of the bid; surety bonds will be retained. Surety bonds must be issued by a surety company that is authorized to do business in the State of Arkansas and that is listed on the current United States Department of the Treasury Listing of Approved Sureties. Surety bonds must be executed by a resident or non-resident agent who is licensed by the Arkansas State Insurance Commissioner to represent the surety company executing the bond, and the resident or non-resident agent shall file with the bond the power of attorney of the agent to act on behalf of the bonding company. Certain bids involving labor will require Performance Bonds in the form of surety bonds only (no checks of any kind allowed). These bonds shall not only serve to guarantee the completion of the work, but also to guarantee the excellence of both workmanship and material until the work is finally accepted and the provisions of the Plans, Specifications, and Special Provisions fulfilled. In such cases, the company issuing the surety bond must comply with all stipulations herein and must be named in the U. S. Treasury listing of companies holding Certificates of Authority as acceptable sureties on Federal Bonds and as acceptable reinsuring companies. Any excess between the face amount of the bond and the underwriting limitation of the bonding company shall be protected by reinsurance provided by an acceptable reinsuring company. Annual Bid and Performance Bonds on file with E & P Division must have sufficient unencumbered funds to meet current bonding requirements, or the bid will be rejected, unless the balance is submitted as set forth above, prior to bid opening.
5. **TAXES:** The ARDOT is not exempt from Arkansas State Sales and Use Taxes, or local option city/county sales taxes, when applicable, and bidders are responsible to the State Revenue Department for such taxes. These taxes should not be included in bid prices, but where required by law, will be paid by the ARDOT as an addition thereto, and should be added to the billing to the ARDOT. The ARDOT is exempt from Federal Excise Taxes on all commodities except motor fuels; and excise taxes should not be included in bid prices except for motor fuels. Where applicable, tax exemption certificates will be furnished by the ARDOT.
6. **"ALL OR NONE" BIDS:** Bidders who wish to bid "All or None" on two or more items shall so stipulate on the face of bid sheet; otherwise, bid may be awarded on an individual item basis.
7. **SPECIFICATIONS:** Complete specifications should be attached for any substitution or alternate offered, or where amplification is necessary. Bidder's name must be placed on all attachments to the bid.
8. **EXCEPTIONS TO SPECIFICATIONS:** Any exceptions to the bid specifications must be stated in the bid. Any exceptions to manufacturer's published literature must be stated in the bid, or it will be assumed that bidder is bidding exactly as stated in the literature.
9. **BRAND NAME REFERENCES:** All brand name references in bid specifications refer to that commodity or its equivalent, unless otherwise stated in Bid Invitation. Bidder should state brand or trade name of item being bid, if such name exists.
10. **FREIGHT:** All freight charges should be included in bid price. Any change in common carrier rates authorized by the Interstate Commerce Commission will be adjusted if such change occurs after the bid opening date. Receipted common carrier bills that reflect ICC authorized rate changes must be furnished.

11. **SAMPLES, LITERATURE, DEMONSTRATIONS:** Samples and technical literature must be provided free of any charge within 14 days of ARDOT request, and free demonstrations within 30 days, unless ARDOT extends time. Failure to provide as requested within this period may cause bid to be rejected. Samples, literature and demonstrations must be substantially the same as the item(s) being bid, unless otherwise agreed to by ARDOT. Samples that are not destroyed will be returned upon request at bidders expense. Samples from successful bidders may be retained for comparison with items actually furnished.
12. **GUARANTY:** Unless otherwise indicated in Bid Invitation, it is understood and agreed that any item offered or shipped on this bid shall be newly manufactured, latest model and design, and in first class condition; and that all containers shall be new, suitable for storage or shipment and in compliance with all applicable laws relating to construction, packaging, labeling and registration.
13. **BACKORDERS OR DELAY IN DELIVERY:** Backorders or failure to deliver within the time required may constitute default. Vendor must give written notice to the ARDOT, as soon as possible, of the reason for any delay and the expected delivery date. The ARDOT has the right to extend delivery if reasons appear valid. If reason or delivery date is not acceptable, vendor is in default.
14. **DEFAULT:** All commodities furnished will be subject to inspection and acceptance by ARDOT after delivery. Default in promised delivery or failure to meet specifications authorizes the ARDOT to cancel award or any portion of same, to reasonably purchase commodities or services elsewhere and to charge full increase, if any, in cost and handling to defaulting vendor. Applicable bonds may be forfeited.
15. **ETHICS:** *"It shall be a breach of ethical standards for a person to be retained, or to retain a person, to solicit or secure a State contract upon an agreement of understanding for a commission, percentage, brokerage, or contingent fee, except for retention of bona fide employees or bona fide established commercial selling agencies maintained by the contractor for the purpose of securing business."* (Arkansas Code, Annotated, Section 19-11-708).
16. **NOTICE OF NONDISCRIMINATION:** The Arkansas State Highway Commission, through ARDOT, complies with all civil rights provisions of federal statutes and related authorities that prohibit discrimination in programs and activities receiving federal financial assistance. Therefore, ARDOT does not discriminate on the basis of race, sex, color, age, national origin, religion (not applicable as a protected group under the Federal Motor Carrier Safety Administration Title VI Program), disability, Limited English Proficiency (LEP), or low-income status in the admission, access to and treatment in the ARDOT's programs and activities, as well as the ARDOT's hiring or employment practices. Complaints of alleged discrimination and inquiries regarding the ARDOT's nondiscrimination policies may be directed to Civil Rights Officer Joanna P. McFadden (ADA/504/Title VI Coordinator), P. O. Box 2261, Little Rock, AR 72203, (501)569-2298, (Voice/TTY 711), or the following email address: joanna.mcfadden@ardot.gov. Free language assistance for Limited English Proficient individuals is available upon request. This notice is available from the ADA/504/Title VI Coordinator in large print, on audiotape and in Braille.
17. **PROHIBITION OF EMPLOYMENT OF ILLEGAL IMMIGRANTS:** Pursuant to Arkansas Code Annotated 19-11-105, all bidders must certify prior to award of a contract that they **do not** employ or contract with any illegal immigrant(s) in its contract with the state. Bidders shall certify online at <https://www.ark.org/dfa/immigrant/index.php>.
18. **DISCLOSURE:** Failure to make any disclosure required by Governor's Executive Order 98-04, or any violation of any rule, regulation, or policy adopted pursuant to that order, **shall** be a material breach of the terms of this contract. Any contractor, whether an individual or entity, who fails to make the required disclosure or who violates any rule, regulation, or policy **shall** be subject to all legal remedies available to the agency.

CONTRACT AND GRANT DISCLOSURE AND CERTIFICATION FORM

Failure to complete all of the following information may result in a delay in obtaining a contract, lease, purchase agreement, or grant award with any Arkansas State Agency.

SUBCONTRACTOR: Yes No IS THIS FOR: Goods? Services? Both?

TAXPAYER ID NAME: _____

YOUR LAST NAME: _____ M.I.: _____

ADDRESS: _____

CITY: _____ STATE: _____ ZIP CODE: _____ COUNTY: _____

AS A CONDITION OF OBTAINING, EXTENDING, AMENDING, OR RENEWING A CONTRACT, LEASE, PURCHASE AGREEMENT, OR GRANT AWARD WITH ANY ARKANSAS STATE AGENCY, THE FOLLOWING INFORMATION MUST BE DISCLOSED:

FOR INDIVIDUALS*

Indicate below if: you, your spouse or the brother, sister, parent, or child of you or your spouse is a current or former: member of the General Assembly, Constitutional Officer, State Board or Commission Member, or State Employee:

Position Held	Mark (✓)		Name of Position of Job Held <small>(senator, representative, name of board/ commission, data entry, etc.)</small>	For How Long?		What is the person(s) name and how are they related to you? <small>(i.e., Jane Q. Public, spouse, John Q. Public, Jr., child, etc.)</small>	Relation
	Current	Former		From MM/YY	To MM/YY		
General Assembly							
Constitutional Officer							
State Board or Commission Member							
State Employee							

None of the above applies

FOR AN ENTITY (BUSINESS)*

Indicate below if any of the following persons, current or former, hold any position of control or hold any ownership interest of 10% or greater in the entity: member of the General Assembly, Constitutional Officer, State Board or Commission Member, State Employee, or the spouse, brother, sister, parent, or child of a member of the General Assembly, Constitutional Officer, State Board or Commission Member, or State Employee. Position of control means the power to direct the purchasing policies or influence the management of the entity.

Position Held	Mark (✓)		Name of Position of Job Held <small>(senator, representative, name of board/ commission, data entry, etc.)</small>	For How Long?		What is the person(s) name and what is his/her % of ownership interest and/or what is his/her position of control?		
	Current	Former		From MM/YY	To MM/YY	Person's Name(s)	Ownership Interest (%)	Position of Control
General Assembly								
Constitutional Officer								
State Board or Commission Member								
State Employee								

None of the above applies

Contract and Grant Disclosure and Certification Form

Failure to make any disclosure required by Governor's Executive Order 98-04, or any violation of any rule, regulation, or policy adopted pursuant to that Order, shall be a material breach of the terms of this contract. Any contractor, whether an individual or entity, who fails to make the required disclosure or who violates any rule, regulation, or policy shall be subject to all legal remedies available to the agency.

As an additional condition of obtaining, extending, amending, or renewing a contract with a state agency I agree as follows:

1. Prior to entering into any agreement with any subcontractor, prior or subsequent to the contract date, I will require the subcontractor to complete a **CONTRACT AND GRANT DISCLOSURE AND CERTIFICATION FORM**. Subcontractor shall mean any person or entity with whom I enter an agreement whereby I assign or otherwise delegate to the person or entity, for consideration, all, or any part, of the performance required of me under the terms of my contract with the state agency.
2. I will include the following language as a part of any agreement with a subcontractor:

Failure to make any disclosure required by Governor's Executive Order 98-04, or any violation of any rule, regulation, or policy adopted pursuant to that Order, shall be a material breach of the terms of this subcontract. The party who fails to make the required disclosure or who violates any rule, regulation, or policy shall be subject to all legal remedies available to the contractor.
3. No later than ten (10) days after entering into any agreement with a subcontractor, whether prior or subsequent to the contract date, I will mail a copy of the **CONTRACT AND GRANT DISCLOSURE AND CERTIFICATION FORM** completed by the subcontractor and a statement containing the dollar amount of the subcontract to the state agency.

Signature _____	Title _____	Date _____
Vendor Contact Person _____	Title _____	Phone No. _____

<small>Agency Use Only</small>			
Agency Number _____	Agency Name _____	Agency Contact Person _____	Contact Phone No. _____
			Contract or Grant No. _____



CERTIFICATION FOR BOYCOTT AND ILLEGAL IMMIGRANT RESTRICTIONS

Pursuant to Arkansas law, a vendor must submit the below certifications prior to entering into a contract with a public entity for an amount as designated by the applicable laws.

- 1. **Israel Boycott Restriction:** For contracts valued at \$1,000 or greater.

A public entity shall not enter into a contract with a company unless the contract includes a written certification that the person or company is not currently engaged in a boycott of Israel. If at any time after signing this certification the contractor decides to engage in a boycott of Israel, the contractor must notify the contracting public entity in writing. See Arkansas Code Annotated § 25-1-503.

- 2. **Illegal Immigrant Restriction:** For contracts exceeding \$25,000.

No state agency may enter into or renew a public contract for services with a contractor who employs or contracts with an illegal immigrant. A contractor shall certify that it does not employ, or contract with, illegal immigrants. See Arkansas Code Annotated § 19-11-105.

- 3. **Energy, Fossil Fuel, Firearms, and Ammunition Industries Boycott Restriction:** For contracts valued at, or exceeding, \$75,000.

A public entity shall not enter into a contract with a company unless the contract includes a written certification that the person or company is not currently engaged in, and agrees for the duration of the contract not to engage in, a boycott of an Energy, Fossil Fuel, Firearms, or Ammunition Industry. If a company does boycott any of these industries, see Arkansas Code Annotated § 25-1-1102.

By signing this form, the contractor agrees and certifies that it does not, and shall not for the remaining aggregate term of the contract, participate in the activities checked below:

- Do not boycott Israel.
- Do not employ illegal immigrants.
- Do not boycott Energy, Fossil Fuel, Firearms, or Ammunition Industries.

Contract Number & Description	
Name of Public Entity	Arkansas Department of Transportation
Name of Vendor/Contractor	
AASIS Vendor Number	N/A

Contractor Signature

Date

PROJECT MANUAL

ARDOT **Equipment and Procurement** **Shop Awnings** Little Rock, Arkansas

Prepared by
Arkansas Department of Transportation

11302 West Baseline Road
Little Rock Arkansas 72203
Project Number 42-12

**ARKANSAS DEPARTMENT OF TRANSPORTATION
JOB NO.42-12
EQUIPMENT AND PROCUREMENT SHOP AWNINGS
PROJECT MANUAL**

TABLE OF CONTENTS

DIVISION 01 - GENERAL REQUIREMENTS

01 10 00	SUMMARY
01 25 00	SUBSTITUTION PROCEDURES
01 26 00	CONTRACT MODIFICATION PROCEDURES
01 29 00	PAYMENT PROCEDURES
01 31 00	PROJECT MANAGEMENT AND COORDINATION
01 33 00	SUBMITTAL PROCEDURES
01 40 00	QUALITY REQUIREMENTS
01 60 00	PRODUCT REQUIREMENTS

DIVISION 03 - CONCRETE

03 20 00	CONCRETE REINFORCING
03 30 00	CAST-IN-PLACE CONCRETE

DIVISION 07 - THERMAL AND MOISTURE PROTECTION

07 21 00	THERMAL INSULATION
07 25 00	WEATHER BARRIERS
07 42 13.13	FORMED METAL WALL PANELS
07 72 53	SNOW GUARDS

DIVISION 08 - OPENINGS

08 11 13	HOLLOW METAL DOORS AND FRAMES
08 36 13	SECTIONAL DOORS
08 71 00	DOOR HARDWARE

DIVISION 13 - SPECIAL CONSTRUCTION

13 34 19	METAL BUILDING SYSTEMS
----------	------------------------

END OF TABLE OF CONTENTS

**ARKANSAS DEPARTMENT OF TRANSPORTATION
JOB NO.42-12
EQUIPMENT AND PROCUREMENT SHOP AWNINGS
PROJECT MANUAL**

SECTION 01 10 00 - SUMMARY

PART 1 - GENERAL

1.1 SUMMARY

A. Section Includes:

1. Project information.
2. Work covered by Contract Documents.
3. Contractor's use of site and premises.
4. Coordination with occupants.
5. Work restrictions.

B. Related Requirements:

1.2 PROJECT INFORMATION

A. Project Identification: Equipment and Procurement Shop Awnings.

1. Project Location: 11302 West Baseline Road, Little Rock AR 72203.

B. Owner: Arkansas Department of Transportation.

1. Project Coordinator: Sherman Whittle (501) 569-2154.

1.3 WORK COVERED BY CONTRACT DOCUMENTS

A. The Work of Project is defined by the Contract Documents and includes, but is not limited to, the following:

1. Complete removal of existing roof including metal deck. Install new metal deck, Insulation, TPO membrane and other Work indicated in the Contract Documents.

B. Type of Contract:

1. Project will be constructed under a single prime contract.

1.4 CONTRACTOR'S USE OF SITE AND PREMISES

A. Limits on Use of Site: Limit use of Project site to Work in areas indicated. Do not disturb portions of Project site beyond areas in which the Work is indicated.

**ARKANSAS DEPARTMENT OF TRANSPORTATION
JOB NO.42-12
EQUIPMENT AND PROCUREMENT SHOP AWNINGS
PROJECT MANUAL**

1. Driveways, Walkways and Entrances: Keep driveways and entrances serving premises clear and available to Owner, Owner's employees, and emergency vehicles at all times. Do not use these areas for parking or for storage of materials.
 - a. Schedule deliveries to minimize use of driveways and entrances by construction operations.
 - b. Schedule deliveries to minimize space and time requirements for storage of materials and equipment on-site.
- B. Condition of Existing Building: Maintain portions of existing building affected by construction operations in a weathertight condition throughout construction period. Repair damage caused by construction operations.
- C. Condition of Existing Grounds: Maintain portions of existing grounds, landscaping, and hardscaping affected by construction operations throughout construction period. Repair damage caused by construction operations.

1.5 COORDINATION WITH OCCUPANTS

- A. Partial Owner Occupancy: Owner will occupy the premises during entire construction period, with the exception of areas under construction. Cooperate with Owner during construction operations to minimize conflicts and facilitate Owner usage. Perform the Work so as not to interfere with Owner's operations. Maintain existing exits unless otherwise indicated.
 1. Maintain access to existing walkways, corridors, and other adjacent occupied or used facilities. Do not close or obstruct walkways, corridors, or other occupied or used facilities without written permission from Owner and authorities having jurisdiction.
 2. Provide not less than 72 hours' notice to Owner of activities that will affect Owner's operations.
- B. Owner Limited Occupancy of Completed Areas of Construction: Owner reserves the right to occupy and to place and install equipment in completed portions of the Work, prior to Substantial Completion of the Work, provided such occupancy does not interfere with completion of the Work. Such placement of equipment and limited occupancy shall not constitute acceptance of the total Work.

1.6 WORK RESTRICTIONS

- A. Comply with restrictions on construction operations.
 1. Comply with limitations on use of public streets, work on public streets, rights of way, and other requirements of authorities having jurisdiction.
- B. On-Site Work Hours: Limit work to between 8 a.m. to 5 p.m., Monday through

**ARKANSAS DEPARTMENT OF TRANSPORTATION
JOB NO.42-12
EQUIPMENT AND PROCUREMENT SHOP AWNINGS
PROJECT MANUAL**

Friday, unless otherwise indicated. Work hours may be modified to meet Project requirements if approved by Owner and authorities having jurisdiction.

1. Weekend Hours: Weekend work shall be permitted with Owner approval.
- C. Existing Utility Interruptions: Do not interrupt utilities serving facilities occupied by Owner or others unless permitted under the following conditions and then only after arranging for temporary utility services according to requirements indicated:
1. Notify Owner not less than two days in advance of proposed utility interruptions.
- D. Smoking and Controlled Substance Restrictions: Use of tobacco products , alcoholic beverages, and other controlled substances on Owner's property is not permitted.

PART 2 - PRODUCTS (Not Used)
PART 3 - EXECUTION (Not Used)

END OF SECTION 01 10 00

**ARKANSAS DEPARTMENT OF TRANSPORTATION
JOB NO.42-12
EQUIPMENT AND PROCUREMENT SHOP AWNINGS
PROJECT MANUAL**

SECTION 01 25 00 - SUBSTITUTION PROCEDURES

PART 1 - GENERAL

1.1 SUMMARY

- A. Section includes administrative and procedural requirements for substitutions.
- B. Related Requirements:
 - 1. Section 016000 "Product Requirements" for requirements for submitting comparable product submittals for products by listed manufacturers.

1.2 ACTION SUBMITTALS

- A. Substitution Requests: Submit documentation identifying product or fabrication or installation method to be replaced. Include Specification Section number and title and Drawing numbers and titles.
 - 1. Documentation: Show compliance with requirements for substitutions and the following, as applicable:
 - a. Statement indicating why specified product or fabrication or installation method cannot be provided, if applicable.
 - b. Coordination of information, including a list of changes or revisions needed to other parts of the Work and to construction performed by Owner and separate contractors that will be necessary to accommodate proposed substitution.
 - c. Detailed comparison of significant qualities of proposed substitutions with those of the Work specified. Include annotated copy of applicable Specification Section. Significant qualities may include attributes, such as performance, weight, size, durability, visual effect, sustainable design characteristics, warranties, and specific features and requirements indicated. Indicate deviations, if any, from the Work specified.
 - d. Product Data, including drawings and descriptions of products and fabrication and installation procedures.
 - e. Samples, where applicable or requested.
 - f. Certificates and qualification data, where applicable or requested.
 - g. List of similar installations for completed projects, with project names and addresses as well as names and addresses of architects and owners.
 - h. Material test reports from a qualified testing agency, indicating and interpreting test results for compliance with requirements indicated.
 - i. Detailed comparison of Contractor's construction schedule using

**ARKANSAS DEPARTMENT OF TRANSPORTATION
JOB NO.42-12
EQUIPMENT AND PROCUREMENT SHOP AWNINGS
PROJECT MANUAL**

proposed substitutions with products specified for the Work, including effect on the overall Contract Time. If specified product or method of construction cannot be provided within the Contract Time, include letter from manufacturer, on manufacturer's letterhead, stating date of receipt of purchase order, lack of availability, or delays in delivery.

- j. Cost information, including a proposal of change, if any, in the Contract Sum.
- k. Contractor's certification that proposed substitution complies with requirements in the Contract Documents, except as indicated in substitution request, is compatible with related materials and is appropriate for applications indicated.
- l. Contractor's waiver of rights to additional payment or time that may subsequently become necessary because of failure of proposed substitution to produce indicated results.

1.3 QUALITY ASSURANCE

- A. Compatibility of Substitutions: Investigate and document compatibility of proposed substitution with related products and materials. Engage a qualified testing agency to perform compatibility tests recommended by manufacturers.

1.4 PROCEDURES

- A. Coordination: Revise or adjust affected work as necessary to integrate work of the approved substitutions.

1.5 SUBSTITUTIONS

- A. Substitutions for Cause: Submit requests for substitution immediately on discovery of need for change, but not later than 15 days prior to time required for preparation and review of related submittals.

- 1. Conditions: Architect will consider Contractor's request for substitution when the following conditions are satisfied. If the following conditions are not satisfied, Architect will return requests without action, except to record noncompliance with these requirements:
 - a. Requested substitution is consistent with the Contract Documents and will produce indicated results.
 - b. Substitution request is fully documented and properly submitted.
 - c. Requested substitution will not adversely affect Contractor's construction schedule.
 - d. Requested substitution is compatible with other portions of the Work.
 - e. Requested substitution has been coordinated with other portions of the Work.
 - f. Requested substitution provides specified warranty.

**ARKANSAS DEPARTMENT OF TRANSPORTATION
JOB NO.42-12
EQUIPMENT AND PROCUREMENT SHOP AWNINGS
PROJECT MANUAL**

**PART 2 - PRODUCTS (Not Used)
PART 3 - EXECUTION (Not Used)**

END OF SECTION 01 25 00

**ARKANSAS DEPARTMENT OF TRANSPORTATION
JOB NO.42-12
EQUIPMENT AND PROCUREMENT SHOP AWNINGS
PROJECT MANUAL**

SECTION 01 26 00 - CONTRACT MODIFICATION PROCEDURES

PART 1 - GENERAL

1.1 SUMMARY

- A. Section includes administrative and procedural requirements for handling and processing Contract modifications.
- B. Related Requirements:
 - 1. Section 012500 "Substitution Procedures" for administrative procedures for handling requests for substitutions made after the Contract award.
 - 2. Section 013100 "Project Management and Coordination" for requirements for forms for contract modifications provided as part of web-based Project management software.

1.2 PROPOSAL REQUESTS

- A. Owner-Initiated Proposal Requests: Owner will issue a detailed description of proposed changes in the Work that may require adjustment to the Contract Sum or the Contract Time. If necessary, the description will include supplemental or revised Drawings and Specifications.
 - 1. Work Change Proposal Requests issued by Owner are not instructions either to stop work in progress or to execute the proposed change.
 - 2. Within time specified in Proposal Request after receipt of Proposal Request, submit a quotation estimating cost adjustments to the Contract Sum and the Contract Time necessary to execute the change.
 - a. Include a list of quantities of products required or eliminated and unit costs, with total amount of purchases and credits to be made. If requested, furnish survey data to substantiate quantities.
 - b. Indicate applicable taxes, delivery charges, equipment rental, and amounts of trade discounts.
 - c. Include costs of labor and supervision directly attributable to the change.
 - d. Include an updated Contractor's construction schedule that indicates the effect of the change, including, but not limited to, changes in activity duration, start and finish times, and activity relationship. Use available total float before requesting an extension of the Contract Time.
- B. Contractor-Initiated Proposals: If latent or changed conditions require modifications to the Contract, Contractor may initiate a claim by submitting a

**ARKANSAS DEPARTMENT OF TRANSPORTATION
JOB NO.42-12
EQUIPMENT AND PROCUREMENT SHOP AWNINGS
PROJECT MANUAL**

request for a change to Owner .

1. Include a statement outlining reasons for the change and the effect of the change on the Work. Provide a complete description of the proposed change. Indicate the effect of the proposed change on the Contract Sum and the Contract Time.
2. Include a list of quantities of products required or eliminated and unit costs, with total amount of purchases and credits to be made. If requested, furnish survey data to substantiate quantities.
3. Indicate applicable taxes, delivery charges, equipment rental, and amounts of trade discounts.
4. Include costs of labor and supervision directly attributable to the change.
5. Include an updated Contractor's construction schedule that indicates the effect of the change, including, but not limited to, changes in activity duration, start and finish times, and activity relationship. Use available total float before requesting an extension of the Contract Time.
6. Comply with requirements in Section 012500 "Substitution Procedures" if the proposed change requires substitution of one product or system for product or system specified.

1.3 CHANGE ORDER PROCEDURES

- A. On Owner's approval of a Work Change Proposal Request, Owner will issue a Change Order for signatures of Owner and Contractor on Owner provided form.

1.4 CONSTRUCTION CHANGE DIRECTIVE

- A. Construction Change Directive: Owner may issue a Construction Change Directive. Construction Change Directive instructs Contractor to proceed with a change in the Work, for subsequent inclusion in a Change Order.
 1. Construction Change Directive contains a complete description of change in the Work. It also designates method to be followed to determine change in the Contract Sum or the Contract Time.
- B. Documentation: Maintain detailed records on a time and material basis of work required by the Construction Change Directive.
 1. After completion of change, submit an itemized account and supporting data necessary to substantiate cost and time adjustments to the Contract.

**PART 2 - PRODUCTS (Not Used)
PART 3 - EXECUTION (Not Used)**

END OF SECTION 01 26 00

**ARKANSAS DEPARTMENT OF TRANSPORTATION
JOB NO.42-12
EQUIPMENT AND PROCUREMENT SHOP AWNINGS
PROJECT MANUAL**

SECTION 01 29 00 - PAYMENT PROCEDURES

PART 1 - GENERAL

1.1 SUMMARY

- A. Section includes administrative and procedural requirements necessary to prepare and process Applications for Payment.
- B. Related Requirements:
 - 1. Section 012600 "Contract Modification Procedures" for administrative procedures for handling changes to the Contract.
 - 2. Section 013200 "Construction Progress Documentation" for administrative requirements governing the preparation and submittal of the Contractor's construction schedule.

1.2 APPLICATIONS FOR PAYMENT

- A. Each Application for Payment following the initial Application for Payment shall be consistent with previous applications and payments, as certified by and paid for by Owner.
- B. Payment Application Times: Submit Application for Payment to Architect by the 15th of the month. The period covered by each Application for Payment is one month, ending on the last day of the month.
 - 1. Submit draft copy of Application for Payment seven days prior to due date for review by Architect.
- C. Application for Payment Forms: Use form approved by Owner as form for Applications for Payment.
- D. Application Preparation: Complete every entry on form. Notarize and execute by a person authorized to sign legal documents on behalf of Contractor. Owner will return incomplete applications without action.
 - 1. Include amounts for work completed following previous Application for Payment, whether or not payment has been received. Include only amounts for work completed at time of Application for Payment.
 - 2. Include amounts of Change Orders and Construction Change Directives issued before last day of construction period covered by application.
 - 3. Indicate separate amounts for work being carried out under Owner-requested project acceleration.

**ARKANSAS DEPARTMENT OF TRANSPORTATION
JOB NO.42-12
EQUIPMENT AND PROCUREMENT SHOP AWNINGS
PROJECT MANUAL**

- E. Stored Materials: Include in Application for Payment amounts applied for materials or equipment purchased or fabricated and stored, but not yet installed. Differentiate between items stored on-site and items stored off-site.
1. Provide certificate of insurance, evidence of transfer of title to Owner, and consent of surety to payment for stored materials.
 2. Provide supporting documentation that verifies amount requested, such as paid invoices. Match amount requested with amounts indicated on documentation; do not include overhead and profit on stored materials.
 3. Provide summary documentation for stored materials indicating the following:
 - a. Value of materials previously stored and remaining stored as of date of previous Applications for Payment.
 - b. Value of previously stored materials put in place after date of previous Application for Payment and on or before date of current Application for Payment.
 - c. Value of materials stored since date of previous Application for Payment and remaining stored as of date of current Application for Payment.
- F. Transmittal: Submit signed and notarized original copies of each Application for Payment to Owner. One copy shall include waivers of lien and similar attachments if required.
1. Transmit each copy with a transmittal form listing attachments and recording appropriate information about application.
- G. Initial Application for Payment: Administrative actions and submittals that must precede or coincide with submittal of first Application for Payment include the following:
1. List of subcontractors.
 2. Contractor's construction schedule (preliminary if not final).
 3. Products list (preliminary if not final).
 4. Initial progress report.
 5. Report of preconstruction conference.
 6. Certificates of insurance and insurance policies.
 7. Performance and payment bonds.
 8. Data needed to acquire Owner's insurance.
- H. Application for Payment at Substantial Completion: After Owner issues the Certificate of Substantial Completion, submit an Application for Payment showing 100 percent completion for portion of the Work claimed as substantially complete.
1. Include documentation supporting claim that the Work is substantially complete and a statement showing an accounting of changes to the

**ARKANSAS DEPARTMENT OF TRANSPORTATION
JOB NO.42-12
EQUIPMENT AND PROCUREMENT SHOP AWNINGS
PROJECT MANUAL**

Contract Sum.

- a. Complete administrative actions, submittals, and Work preceding this application, as described in Section 017700 "Closeout Procedures."
2. This application shall reflect Certificate(s) of Substantial Completion issued previously for Owner occupancy of designated portions of the Work.
- I. Final Payment Application: After completing Project closeout requirements, submit final Application for Payment with releases and supporting documentation not previously submitted and accepted, including, but not limited, to the following:
 1. Evidence of completion of Project closeout requirements.
 2. Certification of completion of final punch list items.
 3. Insurance certificates for products and completed operations where required and proof that taxes, fees, and similar obligations were paid.
 4. Updated final statement, accounting for final changes to the Contract Sum.
 5. Evidence that claims have been settled.
 6. Final liquidated damages settlement statement.
 7. Proof that taxes, fees, and similar obligations are paid.
 8. Waivers and releases.

PART 2 - PRODUCTS (Not Used)
PART 3 - EXECUTION (Not Used)

END OF SECTION 01 29 00

**ARKANSAS DEPARTMENT OF TRANSPORTATION
JOB NO.42-12
EQUIPMENT AND PROCUREMENT SHOP AWNINGS
PROJECT MANUAL**

SECTION 01 31 00 - PROJECT MANAGEMENT AND COORDINATION

PART 1 - GENERAL

1.1 SUMMARY

- A. Section includes administrative provisions for coordinating construction operations on Project, including, but not limited to, the following:
 - 1. General coordination procedures.
 - 2. Coordination drawings.
 - 3. RFIs.
 - 4. Digital project management procedures.
 - 5. Project meetings.

- B. Related Requirements:
 - 1. Section 013200 "Construction Progress Documentation" for preparing and submitting Contractor's construction schedule.
 - 2. Section 017300 "Execution" for procedures for coordinating general installation and field-engineering services, including establishment of benchmarks and control points.
 - 3. Section 019113 "General Commissioning Requirements" for coordinating the Work with Owner's Commissioning Authority.

1.2 INFORMATIONAL SUBMITTALS

- A. Subcontract List: Prepare a written summary identifying individuals or firms proposed for each portion of the Work, including those who are to furnish products or equipment fabricated to a special design. Include the following information in tabular form:
 - 1. Name, address, telephone number, and email address of entity performing subcontract or supplying products.

- B. Key Personnel Names: Within 5 days of starting construction operations, submit a list of key personnel assignments, including superintendent and other personnel in attendance at Project site. Identify individuals and their duties and responsibilities; list addresses, cellular telephone numbers, and e-mail addresses. Provide names, addresses, and telephone numbers of individuals assigned as alternates in the absence of individuals assigned to Project.

**ARKANSAS DEPARTMENT OF TRANSPORTATION
JOB NO.42-12
EQUIPMENT AND PROCUREMENT SHOP AWNINGS
PROJECT MANUAL**

1.3 GENERAL COORDINATION PROCEDURES

- A. Coordination: Coordinate construction operations included in different Sections of the Specifications to ensure efficient and orderly installation of each part of the Work. Coordinate construction operations included in different Sections that depend on each other for proper installation, connection, and operation.
 - 1. Schedule construction operations in sequence required to obtain the best results, where installation of one part of the Work depends on installation of other components, before or after its own installation.
 - 2. Coordinate installation of different components to ensure maximum performance and accessibility for required maintenance, service, and repair.
 - 3. Make adequate provisions to accommodate items scheduled for later installation.

- B. Prepare memoranda for distribution to each party involved, outlining special procedures required for coordination. Include such items as required notices, reports, and list of attendees at meetings.
 - 1. Prepare similar memoranda for Owner and separate contractors if coordination of their Work is required.

1.4 REQUEST FOR INFORMATION (RFI)

- A. General: Immediately on discovery of the need for additional information, clarification, or interpretation of the Contract Documents, Contractor shall prepare and submit an RFI in the form specified.
 - 1. Coordinate and submit RFIs in a prompt manner to avoid delays in Contractor's work or work of subcontractors.

- B. Content of the RFI: Include a detailed, legible description of item needing information or interpretation and the following:
 - 1. Project name.
 - 2. Owner name.
 - 3. Owner's Project number.
 - 4. Date.
 - 5. Name of Contractor.
 - 6. RFI number, numbered sequentially.
 - 7. RFI subject.
 - 8. Specification Section number and title and related paragraphs, as appropriate.
 - 9. Drawing number and detail references, as appropriate.
 - 10. Field dimensions and conditions, as appropriate.
 - 11. Contractor's suggested resolution. If Contractor's suggested resolution

**ARKANSAS DEPARTMENT OF TRANSPORTATION
JOB NO.42-12
EQUIPMENT AND PROCUREMENT SHOP AWNINGS
PROJECT MANUAL**

impacts the Contract Time or the Contract Sum, Contractor shall state impact in the RFI.

12. Contractor's signature.
13. Attachments: Include sketches, descriptions, measurements, photos, Product Data, Shop Drawings, coordination drawings, and other information necessary to fully describe items needing interpretation.
 - a. Include dimensions, thicknesses, structural grid references, and details of affected materials, assemblies, and attachments on attached sketches.

1.5 DIGITAL PROJECT MANAGEMENT PROCEDURES

- A. PDF Document Preparation: Where PDFs are required to be submitted to Architect, prepare as follows:
 1. Assemble complete submittal package into a single indexed file, incorporating submittal requirements of a single Specification Section and transmittal form with links enabling navigation to each item.
 2. Name file with submittal number or other unique identifier, including revision identifier.
 3. Certifications: Where digitally submitted certificates and certifications are required, provide a digital signature with digital certificate on where indicated.

**PART 2 - PRODUCTS (Not Used)
PART 3 - EXECUTION (Not Used)**

END OF SECTION 01 31 00

**ARKANSAS DEPARTMENT OF TRANSPORTATION
JOB NO.42-12
EQUIPMENT AND PROCUREMENT SHOP AWNINGS
PROJECT MANUAL**

SECTION 01 33 00 - SUBMITTAL PROCEDURES

PART 1 - GENERAL

1.1 SUMMARY

A. Section Includes:

1. Submittal schedule requirements.
2. Administrative and procedural requirements for submittals.

B. Related Requirements:

1. Section 012900 "Payment Procedures" for submitting Applications for Payment and the schedule of values.
2. Section 013100 "Project Management and Coordination" for submitting coordination drawings and subcontract list and for requirements for web-based Project software.
3. Section 014000 "Quality Requirements" for submitting test and inspection reports, and schedule of tests and inspections.
4. Section 017700 "Closeout Procedures" for submitting closeout submittals and maintenance material submittals.

1.2 SUBMITTAL FORMATS

A. Submittal Information: Include the following information in each submittal:

1. Project name.
2. Date.
3. Name of Contractor.
4. Name of firm or entity that prepared submittal.
5. Names of subcontractor, manufacturer, and supplier.
6. Unique submittal number, including revision identifier. Include Specification Section number with sequential alphanumeric identifier and alphanumeric suffix for resubmittals.
7. Submittal purpose and description.
8. Indication of full or partial submittal.
9. Other necessary identification.
10. Remarks.
11. Signature of transmitter.

B. Options: Identify options requiring selection.

C. Deviations and Additional Information: On each submittal, clearly indicate deviations from requirements in the Contract Documents, including minor

**ARKANSAS DEPARTMENT OF TRANSPORTATION
JOB NO.42-12
EQUIPMENT AND PROCUREMENT SHOP AWNINGS
PROJECT MANUAL**

variations and limitations; include relevant additional information and revisions, other than those requested by Owner on previous submittals. Indicate by highlighting on each submittal or noting on attached separate sheet.

- D. Electronic Submittals: Prepare submittals as PDF package, incorporating complete information into each PDF file. Name PDF file with submittal number.

1.3 SUBMITTAL PROCEDURES

- A. Prepare and submit submittals required by individual Specification Sections. Types of submittals are indicated in individual Specification Sections.
1. Email: Prepare submittals as PDF package and transmit to Owner by sending via email. Include PDF transmittal form. Include information in email subject line as requested by Architect.
 - a. Owner will return annotated file. Annotate and retain one copy of file as a digital Project Record Document file.
- B. Processing Time: Allow time for submittal review, including time for resubmittals, as follows. Time for review shall commence on receipt of submittal. No extension of the Contract Time will be authorized because of failure to transmit submittals enough in advance of the Work to permit processing, including resubmittals.
1. Initial Review: Allow 5 days for initial review of each submittal. Allow additional time if coordination with subsequent submittals is required. Owner will advise Contractor when a submittal being processed must be delayed for coordination.
 2. Intermediate Review: If intermediate submittal is necessary, process it in same manner as initial submittal.
 3. Resubmittal Review: Allow 5 days for review of each resubmittal.
- C. Resubmittals: Make resubmittals in same form and number of copies as initial submittal.
1. Note date and content of previous submittal.
 2. Note date and content of revision in label or title block, and clearly indicate extent of revision.
 3. Resubmit submittals until they are marked with approval notation from Owner's action stamp.
- D. Distribution: Furnish copies of final submittals to manufacturers, subcontractors, suppliers, fabricators, installers, authorities having jurisdiction, and others as necessary for performance of construction activities. Show distribution on transmittal forms.
- E. Use for Construction: Retain complete copies of submittals on Project site. Use only final action submittals that are marked with approval notation from Owner's

**ARKANSAS DEPARTMENT OF TRANSPORTATION
JOB NO.42-12
EQUIPMENT AND PROCUREMENT SHOP AWNINGS
PROJECT MANUAL**

action stamp.

1.4 SUBMITTAL REQUIREMENTS

- A. Product Data: Collect information into a single submittal for each element of construction and type of product or equipment.
1. If information must be specially prepared for submittal because standard published data are unsuitable for use, submit as Shop Drawings, not as Product Data.
 2. Mark each copy of each submittal to show which products and options are applicable.
 3. Include the following information, as applicable:
 - a. Manufacturer's catalog cuts.
 - b. Manufacturer's product specifications.
 - c. Standard color charts.
 - d. Statement of compliance with specified referenced standards.
 - e. Testing by recognized testing agency.
 - f. Application of testing agency labels and seals.
 - g. Notation of coordination requirements.
 - h. Availability and delivery time information.
 4. For equipment, include the following in addition to the above, as applicable:
 - a. Wiring diagrams that show factory-installed wiring.
 - b. Printed performance curves.
 - c. Operational range diagrams.
 - d. Clearances required to other construction, if not indicated on accompanying Shop Drawings.
 5. Submit Product Data before Shop Drawings, and before or concurrently with Samples.
- B. Shop Drawings: Prepare Project-specific information, drawn accurately to scale. Do not base Shop Drawings on reproductions of the Contract Documents or standard printed data.
1. Preparation: Fully illustrate requirements in the Contract Documents. Include the following information, as applicable:
 - a. Identification of products.
 - b. Schedules.
 - c. Compliance with specified standards.
 - d. Notation of coordination requirements.
 - e. Notation of dimensions established by field measurement.
 - f. Relationship and attachment to adjoining construction clearly indicated.

**ARKANSAS DEPARTMENT OF TRANSPORTATION
JOB NO.42-12
EQUIPMENT AND PROCUREMENT SHOP AWNINGS
PROJECT MANUAL**

- g. Seal and signature of professional engineer if specified.
- C. Samples: Submit Samples for review of type, color, pattern, and texture for a check of these characteristics with other materials.
- 1. Transmit Samples that contain multiple, related components, such as accessories together in one submittal package.
 - 2. Identification: Permanently attach label on unexposed side of Samples that includes the following:
 - a. Project name and submittal number.
 - b. Generic description of Sample.
 - c. Product name and name of manufacturer.
 - d. Sample source.
 - e. Number and title of applicable Specification Section.
 - f. Specification paragraph number and generic name of each item.
 - 3. Email Transmittal: Provide PDF transmittal. Include digital image file illustrating Sample characteristics and identification information for record.
 - 4. Disposition: Maintain sets of approved Samples at Project site, available for quality-control comparisons throughout the course of construction activity. Sample sets may be used to determine final acceptance of construction associated with each set.
 - a. Samples that may be incorporated into the Work are indicated in individual Specification Sections. Such Samples must be in an undamaged condition at time of use.
 - b. Samples not incorporated into the Work, or otherwise designated as Owner's property, are the property of Contractor.
- D. Design Data: Prepare and submit written and graphic information indicating compliance with indicated performance and design criteria in individual Specification Sections. Include list of assumptions and summary of loads. Include load diagrams if applicable. Provide name and version of software, if any, used for calculations. Number each page of submittal.

**PART 2 - PRODUCTS (Not Used)
PART 3 - EXECUTION (Not Used)**

END OF SECTION 01 33 00

**ARKANSAS DEPARTMENT OF TRANSPORTATION
JOB NO.42-12
EQUIPMENT AND PROCUREMENT SHOP AWNINGS
PROJECT MANUAL**

SECTION 01 40 00 - QUALITY REQUIREMENTS

PART 1 - GENERAL

1.1 SUMMARY

- A. Section includes administrative and procedural requirements for quality assurance and quality control.
- B. Testing and inspection services are required to verify compliance with requirements specified or indicated. These services do not relieve Contractor of responsibility for compliance with the Contract Document requirements.
 - 1. Specific quality-assurance and quality-control requirements for individual work results are specified in their respective Specification Sections. Requirements in individual Sections may also cover production of standard products.
 - 2. Specified tests, inspections, and related actions do not limit Contractor's other quality-assurance and quality-control procedures that facilitate compliance with the Contract Document requirements.
- C. Related Requirements:

1.2 CONFLICTING REQUIREMENTS

- A. Minimum Quantity or Quality Levels: The quantity or quality level shown or specified is the minimum provided or performed. The actual installation may comply exactly with the minimum quantity or quality specified, or it may exceed the minimum within reasonable limits. To comply with these requirements, indicated numeric values are minimum or maximum, as appropriate, for the context of requirements. Refer uncertainties to Architect for a decision before proceeding.

1.3 QUALITY ASSURANCE

- A. Qualifications paragraphs in this article establish the minimum qualification levels required; individual Specification Sections specify additional requirements.
- B. Manufacturer Qualifications: A firm experienced in manufacturing products or systems similar to those indicated for this Project and with a record of successful in-service performance, as well as sufficient production capacity to produce required units. As applicable, procure products from manufacturers able to meet qualification requirements, warranty requirements, and technical or factory-authorized service representative requirements.

**ARKANSAS DEPARTMENT OF TRANSPORTATION
JOB NO.42-12
EQUIPMENT AND PROCUREMENT SHOP AWNINGS
PROJECT MANUAL**

- C. Fabricator Qualifications: A firm experienced in producing products similar to those indicated for this Project and with a record of successful in-service performance, as well as sufficient production capacity to produce required units.

- D. Installer Qualifications: A firm or individual experienced in installing, erecting, applying, or assembling work similar in material, design, and extent to that indicated for this Project, whose work has resulted in construction with a record of successful in-service performance.

PART 2 - PRODUCTS (Not Used)
PART 3 - EXECUTION

END OF SECTION 01 40 00

**ARKANSAS DEPARTMENT OF TRANSPORTATION
JOB NO.42-12
EQUIPMENT AND PROCUREMENT SHOP AWNINGS
PROJECT MANUAL**

SECTION 01 60 00 - PRODUCT REQUIREMENTS

PART 1 - GENERAL

1.1 SUMMARY

- A. The Work of This Section Includes: Administrative and procedural requirements for selection of products for use in Project; product delivery, storage, and handling; manufacturers' standard warranties on products; special warranties; and comparable products.
- B. Related Requirements:
 - 1. Section 011000 "Summary" for Contractor requirements related to Owner-furnished products.
 - 2. Section 012500 "Substitution Procedures" for requests for substitutions.
 - 3. Section 017700 "Closeout Procedures" for submitting warranties.

1.2 QUALITY ASSURANCE

- A. Compatibility of Options: If Contractor is given option of selecting between two or more products for use on Project, select product compatible with products previously selected, even if previously selected products were also options.
- B. Identification of Products: Except for required labels and operating data, do not attach or imprint manufacturer or product names or trademarks on exposed surfaces of products or equipment that will be exposed to view in occupied spaces or on the exterior.
 - 1. Labels: Locate required product labels and stamps on a concealed surface, or, where required for observation following installation, on a visually accessible surface that is inconspicuous.

1.3 COORDINATION

- A. Modify or adjust affected work as necessary to integrate work of approved comparable products and approved substitutions.

1.4 PRODUCT DELIVERY, STORAGE, AND HANDLING

- A. Deliver, store, and handle products, using means and methods that will prevent damage, deterioration, and loss, including theft and vandalism. Comply with manufacturer's written instructions.

**ARKANSAS DEPARTMENT OF TRANSPORTATION
JOB NO.42-12
EQUIPMENT AND PROCUREMENT SHOP AWNINGS
PROJECT MANUAL**

B. Delivery and Handling:

1. Schedule delivery to minimize long-term storage at Project site and to prevent overcrowding of construction spaces.
2. Coordinate delivery with installation time to ensure minimum holding time for items that are flammable, hazardous, easily damaged, or sensitive to deterioration, theft, and other losses.
3. Deliver products to Project site in an undamaged condition in manufacturer's original sealed container or other packaging system, complete with labels and instructions for handling, storing, unpacking, protecting, and installing.
4. Inspect products on delivery to determine compliance with the Contract Documents and that products are undamaged and properly protected.

C. Storage:

1. Store products to allow for inspection and measurement of quantity or counting of units.
2. Store materials in a manner that will not endanger Project structure.
3. Store products that are subject to damage by the elements under cover in a weathertight enclosure above ground, with ventilation adequate to prevent condensation and with adequate protection from wind.
4. Protect foam plastic from exposure to sunlight, except to extent necessary for period of installation and concealment.
5. Comply with product manufacturer's written instructions for temperature, humidity, ventilation, and weather-protection requirements for storage.
6. Protect stored products from damage and liquids from freezing.

1.5 PRODUCT WARRANTIES

- A. Warranties specified in other Sections are to be in addition to, and run concurrent with, other warranties required by the Contract Documents. Manufacturer's disclaimers and limitations on product warranties do not relieve Contractor of obligations under requirements of the Contract Documents.**
1. **Manufacturer's Warranty:** Written standard warranty form furnished by individual manufacturer for a particular product and issued in the name of Owner or endorsed by manufacturer to Owner.
 2. **Special Warranty:** Written warranty required by the Contract Documents to provide specific rights for Owner and issued in the name of Owner or endorsed by manufacturer to Owner.
- B. Special Warranties: Prepare a written document that contains appropriate terms and identification, ready for execution.**
1. **Manufacturer's Standard Form:** Modified to include Project-specific information and properly executed.

**ARKANSAS DEPARTMENT OF TRANSPORTATION
JOB NO.42-12
EQUIPMENT AND PROCUREMENT SHOP AWNINGS
PROJECT MANUAL**

2. See other Sections for specific content requirements and particular requirements for submitting special warranties.
- C. Submittal Time: Comply with requirements in Section 017700 "Closeout Procedures."

PART 2 - PRODUCTS

2.1 PRODUCT SELECTION PROCEDURES

- A. General Product Requirements: Provide products that comply with the Contract Documents, are undamaged and, unless otherwise indicated, are new at time of installation.
1. Provide products complete with accessories, trim, finish, fasteners, and other items needed for a complete installation and indicated use and effect.
 2. Standard Products: If available, and unless custom products or nonstandard options are specified, provide standard products of types that have been produced and used successfully in similar situations on other projects.
 3. Owner reserves the right to limit selection to products with warranties meeting requirements of the Contract Documents.
 4. Descriptive, performance, and reference standard requirements in Specifications establish salient characteristics of products.
 5. Or Equal: For products specified by name and accompanied by the term "or equal," "or approved equal," or "or approved," comply with requirements in "Comparable Products" Article to obtain approval for use of an unnamed product.
- B. Product Selection Procedures:

2.2 COMPARABLE PRODUCTS

- A. Conditions for Consideration of Comparable Products: Owner will consider Contractor's request for comparable product when the following conditions are satisfied. If the following conditions are not satisfied, Owner may return requests without action, except to record noncompliance with the following requirements:
1. Evidence that proposed product does not require revisions to the Contract Documents, is consistent with the Contract Documents, will produce the indicated results, and is compatible with other portions of the Work.
 2. Detailed comparison of significant qualities of proposed product with those of the named basis-of-design product. Significant product qualities include attributes such as type, function, in-service performance and physical properties, weight, dimension, durability, visual characteristics, and other specific features and requirements.

**ARKANSAS DEPARTMENT OF TRANSPORTATION
JOB NO.42-12
EQUIPMENT AND PROCUREMENT SHOP AWNINGS
PROJECT MANUAL**

3. Evidence that proposed product provides specified warranty.
4. List of similar installations for completed projects, with project names and addresses and names and addresses of architects and owners, if requested.
5. Samples, if requested.

PART 3 - EXECUTION (Not Used)

END OF SECTION 01 60 00

**ARKANSAS DEPARTMENT OF TRANSPORTATION
JOB NO.42-12
EQUIPMENT AND PROCUREMENT SHOP AWNINGS
PROJECT MANUAL**

SECTION 03 20 00 - CONCRETE REINFORCING

PART 1 - GENERAL

1.1 SUMMARY

A. Section Includes:

1. Steel reinforcement bars.

1.2 ACTION SUBMITTALS

A. Product Data: For the following:

1. Each type of steel reinforcement.
2. Epoxy repair coating.
3. Zinc repair material.
4. Bar supports.
5. Mechanical splice couplers.

B. Shop Drawings: Comply with ACI SP-066:

1. Include placing drawings that detail fabrication, bending, and placement.
2. Include bar sizes, lengths, materials, grades, bar schedules, stirrup spacing, bent bar diagrams, bar arrangement, location of splices, lengths of lap splices, details of mechanical splice couplers, details of welding splices, tie spacing, hoop spacing, and supports for concrete reinforcement.

1.3 DELIVERY, STORAGE, AND HANDLING

A. Steel Reinforcement: Deliver, store, and handle steel reinforcement to prevent bending and damage and to avoid damaging coatings on steel reinforcement.

1. Store reinforcement to avoid contact with earth.
2. Do not allow epoxy-coated reinforcement to be stored outdoors for more than 60 days without being stored under an opaque covering.

PART 2 - PRODUCTS

2.1 STEEL REINFORCEMENT

A. Dual-Coated Reinforcing Bars: ASTM A1055/A1055M.

**ARKANSAS DEPARTMENT OF TRANSPORTATION
JOB NO.42-12
EQUIPMENT AND PROCUREMENT SHOP AWNINGS
PROJECT MANUAL**

1. Steel Bars: ASTM A615/A615M, Grade 80, deformed bars.
2. Zinc Coating: ASTM A1055/A1055M Type II.

2.2 REINFORCEMENT ACCESSORIES

- A. Mechanical Splice Couplers: ACI 318 Type 2, same material of reinforcing bar being spliced; compression-only type.
- B. Steel Tie Wire: ASTM A1064/A1064M, annealed steel, not less than 0.0508 inch in diameter.
 1. Finish: Galvanized.
- C. Zinc Repair Material: ASTM A780/A780M.

2.3 FABRICATING REINFORCEMENT

- A. Fabricate steel reinforcement according to CRSI's "Manual of Standard Practice."

PART 3 - EXECUTION

3.1 PREPARATION

- A. Clean reinforcement of loose rust and mill scale, earth, ice, and other foreign materials that reduce bond to concrete.

3.2 INSTALLATION OF STEEL REINFORCEMENT

- A. Comply with CRSI's "Manual of Standard Practice" for placing and supporting reinforcement.
- B. Accurately position, support, and secure reinforcement against displacement.
 1. Locate and support reinforcement with bar supports to maintain minimum concrete cover.
 2. Do not tack weld crossing reinforcing bars.
- C. Provide concrete coverage in accordance with ACI 318.
- D. Set wire ties with ends directed into concrete, not toward exposed concrete surfaces.
- E. Dual-Coated Reinforcement: Repair cut and damaged epoxy coatings with

**ARKANSAS DEPARTMENT OF TRANSPORTATION
JOB NO.42-12
EQUIPMENT AND PROCUREMENT SHOP AWNINGS
PROJECT MANUAL**

epoxy repair coating in accordance with ASTM D3963/D3963M.

3.3 INSTALLATION TOLERANCES

- A. Comply with ACI 117.

END OF SECTION 03 20 00

**ARKANSAS DEPARTMENT OF TRANSPORTATION
JOB NO.42-12
EQUIPMENT AND PROCUREMENT SHOP AWNINGS
PROJECT MANUAL**

SECTION 03 30 00 - CAST-IN-PLACE CONCRETE

PART 1 - GENERAL

1.1 SUMMARY

A. Section Includes:

1. Concrete standards.
2. Concrete materials.
3. Repair materials.
4. Concrete mixture materials.
5. Concrete mixture class types.
6. Concrete mixing.

B. Related Requirements:

1. Section 032000 "Concrete Reinforcing" for steel reinforcing bars and welded-wire reinforcement.

1.2 ACTION SUBMITTALS

A. Product Data:

1. Portland cement.
2. Blended hydraulic cement.
3. Performance-based hydraulic cement.
4. Fly ash.
5. Slag cement.
6. Silica fume.
7. Natural or other pozzolans.
8. Aggregates.
9. Ground calcium carbonate and aggregate mineral fillers.
10. Admixtures:
 - a. Include limitations of use. Admixtures that do not comply with reference ASTM International requirements must be submitted with test data for approval.
11. Repair materials.

B. Design Mixtures: For each concrete mixture, include the following:

1. Mixture identification.
2. Compressive strength at 28 days or other age as specified.

**ARKANSAS DEPARTMENT OF TRANSPORTATION
JOB NO.42-12
EQUIPMENT AND PROCUREMENT SHOP AWNINGS
PROJECT MANUAL**

3. Compressive strength required at stages of construction.
4. Durability exposure classes for Exposure Categories F, S, W, and C.
5. Maximum w/cm ratio.
6. Calculated equilibrium and fresh density for lightweight concrete.
7. Slump or slump flow limit.
8. Air content.
9. Nominal maximum aggregate size.
10. Steel-fiber reinforcement content.
11. Synthetic microfiber content.
12. Synthetic macrofiber content.
13. Intended placement method.
14. Submit adjustments to design mixtures when characteristics of materials, Project conditions, weather, test results, or other circumstances warrant changes.

1.3 DELIVERY, STORAGE, AND HANDLING

- A. Comply with ASTM C94/C94M and ACI 301.

1.4 FIELD CONDITIONS

- A. Cold-Weather Placement: Comply with ACI 301 as follows:
 1. Protect concrete work from physical damage or reduced strength that could be caused by frost, freezing actions, or low temperatures.
 2. When air temperature has fallen to, or is expected to fall below 40 deg F during the protection period, maintain delivered concrete mixture temperature within the temperature range required by ACI 301.
 3. Do not use frozen materials or materials containing ice or snow.
 4. Do not place concrete in contact with surfaces less than 35 deg F, other than reinforcing steel.
- B. Hot-Weather Placement: Comply with ACI 301 and ACI 305.1, and as follows:
 1. Maintain concrete temperature at time of discharge to not exceed 95 deg F.
 2. Fog-spray forms, steel reinforcement, and subgrade just before placing concrete. Keep subgrade uniformly moist without standing water, soft spots, or dry areas.

PART 2 - PRODUCTS

2.1 CONCRETE STANDARDS

- A. ACI Publications: Comply with ACI 301 unless modified by requirements in the Contract Documents.

**ARKANSAS DEPARTMENT OF TRANSPORTATION
JOB NO.42-12
EQUIPMENT AND PROCUREMENT SHOP AWNINGS
PROJECT MANUAL**

2.2 CONCRETE MATERIALS

- A. Source Limitations:
1. Obtain all concrete mixtures from a single ready-mixed concrete manufacturer for entire Project.
 2. Obtain each type of admixture from single source from single manufacturer.
- B. Cementitious Materials:
1. Portland Cement: ASTM C150/C150M, Type III, gray.
 2. Silica Fume: ASTM C1240.
- C. Normal-Weight Aggregates:
1. Coarse Aggregate: ASTM C33/C33M, Class 4M
 2. Maximum Coarse-Aggregate Size: 1 inch nominal.
 3. Fine Aggregate: ASTM C33/C33M.
- D. Lightweight Aggregate: ASTM C330/C330M, 1/2-inch nominal maximum aggregate size.
1. Limit lightweight aggregate for internal curing to prewetted lightweight fine aggregate in accordance with ASTM C1761/C1761M.
- E. Ground Calcium Carbonate or Aggregate Mineral Filler: ASTM C1797. Unless otherwise permitted, do not use mineral filler derived from carbonate sources in concrete for members assigned to Exposure Class S1, S2, or S3.

2.3 ADMIXTURES

- A. Air-Entraining Admixture: ASTM C260/C260M.
- B. Chemical Admixtures: Do not use calcium chloride or admixtures containing calcium chloride in steel-reinforced concrete.
1. Water-Reducing Admixture: ASTM C494/C494M, Type A.
 2. Retarding Admixture: ASTM C494/C494M, Type B.
 3. Water-Reducing and -Retarding Admixture: ASTM C494/C494M, Type D.
 4. High-Range, Water-Reducing Admixture: ASTM C494/C494M, Type F.
 5. High-Range, Water-Reducing and -Retarding Admixture: ASTM C494/C494M, Type G.
 6. Admixtures with special properties, with documentation of claimed performance enhancement, ASTM C494/C494M, Type S.
- C. Mixing Water for Concrete Mixtures and Water Used to Make Ice: ASTM C1602/C1602M. Include documentation of compliance with limits for alkalis,

**ARKANSAS DEPARTMENT OF TRANSPORTATION
JOB NO.42-12
EQUIPMENT AND PROCUREMENT SHOP AWNINGS
PROJECT MANUAL**

sulfates, chlorides, or solids content of mixing water from Table 2 in ASTM C1602/C1602M.

2.4 ACCESSORIES

- A. Bonding Agent: ASTM C1059/C1059M, Type II, nonredispersible, acrylic emulsion or styrene butadiene.
- B. Epoxy Bonding Adhesive: ASTM C881/C881M, two-component epoxy resin, capable of humid curing and bonding to damp surfaces, of class suitable for application temperature and of grade and class to suit requirements, and as follows:
 - 1. Types IV and V, load bearing, for bonding hardened or freshly mixed concrete to hardened concrete.

2.5 CONCRETE MIXTURE MATERIALS

- A. Prepare design mixtures for each type and strength of concrete, proportioned on the basis of laboratory trial mixture or field test data, or both, in accordance with ACI 301.
 - 1. Use a qualified testing agency for preparing and reporting proposed mixture designs, based on laboratory trial mixtures.
- B. Cementitious Materials: Limit percentage, by weight, of cementitious materials other than portland or hydraulic cement in concrete assigned to Exposure Class F3 as follows:
 - 1. Fly Ash or Other Pozzolans: 25 percent by mass.
- C. Admixtures: Use admixtures in accordance with manufacturer's written instructions.

2.6 CONCRETE MIXTURE CLASS TYPES

- A. Class A: Normal-weight concrete used for footings, grade beams, and tie beams.
 - 1. Exposure Class: ACI 318 Class C1.
 - 2. Minimum Compressive Strength: 4000 psi at 28 days.
 - 3. Slump Limit: 5 inches, plus or minus 1-1/2 inches for concrete.
 - 4. Air Content:
 - 5. Limit water-soluble, chloride-ion content in hardened concrete to 0.30 percent by weight of cementitious materials.

**ARKANSAS DEPARTMENT OF TRANSPORTATION
JOB NO.42-12
EQUIPMENT AND PROCUREMENT SHOP AWNINGS
PROJECT MANUAL**

2.7 CONCRETE MIXING

- A. Ready-Mixed Concrete: Measure, batch, mix, and deliver concrete in accordance with ASTM C94/C94M and furnish delivery ticket.

PART 3 - EXECUTION

3.1 EXAMINATION

- A. Verification of Conditions:
 - 1. Before placing concrete, verify that installation of concrete forms, accessories, reinforcement, and embedded items is complete and that required inspections have been performed.
 - 2. Do not proceed until unsatisfactory conditions have been corrected.

3.2 TOLERANCES

- A. Comply with ACI 117.

3.3 INSTALLATION OF CAST-IN-PLACE CONCRETE

- A. Before placing concrete, verify that installation of formwork, reinforcement, embedded items, and vapor retarder is complete and that required inspections are completed.
- B. Notify Owner 24 hours prior to commencement of concrete placement.
- C. Deposit concrete continuously in one layer or in horizontal layers of such thickness that no new concrete is placed on concrete that has hardened enough to cause seams or planes of weakness.
 - 1. If a section cannot be placed continuously, provide construction joints as indicated.
 - 2. Deposit concrete to avoid segregation.
 - 3. Deposit concrete in horizontal layers of depth not to exceed formwork design pressures and in a manner to avoid inclined construction joints.
 - 4. Consolidate placed concrete with mechanical vibrating equipment in accordance with ACI 301.
 - a. Do not use vibrators to transport concrete inside forms.
 - b. Insert and withdraw vibrators vertically at uniformly spaced locations to rapidly penetrate placed layer and at least 6 inches into preceding layer.
 - c. Do not insert vibrators into lower layers of concrete that have begun

**ARKANSAS DEPARTMENT OF TRANSPORTATION
JOB NO.42-12
EQUIPMENT AND PROCUREMENT SHOP AWNINGS
PROJECT MANUAL**

- to lose plasticity.
- d. At each insertion, limit duration of vibration to time necessary to consolidate concrete, and complete embedment of reinforcement and other embedded items without causing mixture constituents to segregate.

3.4 FIELD QUALITY CONTROL

- A. Testing Agency: Owner will engage a qualified testing and inspecting agency to perform tests and inspections and to submit reports.
 - 1. Testing agency to be responsible for providing curing facility for initial curing of strength test specimens on-site and verifying that test specimens are cured in accordance with standard curing requirements in ASTM C31/C31M.
 - 2. Testing agency to immediately report to Architect, Contractor, and concrete manufacturer any failure of Work to comply with Contract Documents.
 - 3. Testing agency to report results of tests and inspections, in writing, to Owner, Contractor, and concrete manufacturer within 48 hours of inspections and tests.
- B. Delivery Tickets: comply with ASTM C94/C94M.
- C. Inspections:
 - 1. Verification of use of required design mixture.
 - 2. Concrete placement, including conveying and depositing.
 - 3. Curing procedures and maintenance of curing temperature.
 - 4. Verification of concrete strength before removal of shores and forms from beams and slabs.
- D. Concrete Tests: Testing of composite samples of fresh concrete obtained in accordance with ASTM C 172/C 172M to be performed in accordance with the following requirements:
 - 1. Testing Frequency: Obtain one composite sample for each day's pour of each concrete mixture exceeding 5 cu. yd., but less than 25 cu. yd., plus one set for each additional 150 cu. yd. or fraction thereof.
 - a. When frequency of testing provides fewer than five compressive-strength tests for each concrete mixture, testing is to be conducted from at least five randomly selected batches or from each batch if fewer than five are used.
 - 2. Compression Test Specimens: ASTM C31/C31M:
 - a. Cast and standard cure two sets of 6 inches by 12-inches or 4-inch by 8-inch cylindrical specimens for each composite sample.

**ARKANSAS DEPARTMENT OF TRANSPORTATION
JOB NO.42-12
EQUIPMENT AND PROCUREMENT SHOP AWNINGS
PROJECT MANUAL**

- b. Cast, and field cure two sets of two standard cylindrical specimens for each composite sample.
3. Compressive-Strength Tests: ASTM C39/C39M.
 - a. Test one set of two standard cured specimens at seven days and one set of two specimens at 28 days.
 - b. A compressive-strength test to be the average compressive strength from a set of two specimens obtained from same composite sample and tested at age indicated.
4. Nondestructive Testing: Impact hammer, sonoscope, or other nondestructive device may be permitted but will not be used as sole basis for approval or rejection of concrete.
5. Additional testing and inspecting, at Contractor's expense, will be performed to determine compliance of replaced or additional work with specified requirements.
6. Correct deficiencies in the Work that test reports and inspections indicate do not comply with the Contract Documents.

3.5 PROTECTION

- A. Protect concrete surfaces as follows:
 1. Protect from petroleum stains.
 2. Diaper hydraulic equipment used over concrete surfaces.
 3. Prohibit use of acids or acidic detergents over concrete surfaces.

END OF SECTION 03 30 00

**ARKANSAS DEPARTMENT OF TRANSPORTATION
JOB NO.42-12
EQUIPMENT AND PROCUREMENT SHOP AWNINGS
PROJECT MANUAL**

SECTION 07 21 00 - THERMAL INSULATION

PART 1 - GENERAL

1.1 SUMMARY

- A. Section Includes:
 - 1. Glass-fiber blanket insulation.
- B. Related Requirements:

1.2 ACTION SUBMITTALS

- A. Product Data: For each type of product.

1.3 DELIVERY, STORAGE, AND HANDLING

- A. Protect insulation materials from physical damage and from deterioration due to moisture, soiling, and other sources. Store inside and in a dry location. Comply with manufacturer's written instructions for handling, storing, and protecting during installation.

PART 2 - PRODUCTS

2.1 PERFORMANCE REQUIREMENTS

- A. Thermal-Resistance Value (R-Value): R-13 in accordance with ASTM C518.

2.2 GLASS-FIBER BLANKET INSULATION

- A. Glass-Fiber Blanket Insulation, Kraft Faced: ASTM C665, Type II (nonreflective faced), Class C (faced surface not rated for flame propagation); Category 1 (membrane is a vapor barrier).
 - 1. Manufacturers: Subject to compliance with requirements, provide products by one of the following:
 - a. CertainTeed; SAINT-GOBAIN
 - b. Johns Manville; a Berkshire Hathaway company
 - c. Or approved equal

**ARKANSAS DEPARTMENT OF TRANSPORTATION
JOB NO.42-12
EQUIPMENT AND PROCUREMENT SHOP AWNINGS
PROJECT MANUAL**

d. Owens Corning

2.3 ACCESSORIES

A. Insulation for Miscellaneous Voids:

1. Spray Polyurethane Foam Insulation: ASTM C1029, Type II, closed cell, with maximum flame-spread and smoke-developed indexes of 75 and 450, respectively, per ASTM E84.

B. Miscellaneous Application Accessories:

1. Crack Sealer: Closed-cell insulating foam in aerosol dispenser recommended in writing by insulation manufacturer for filling gaps in board insulation.
2. Detailing Foam Insulation for Voids: Urethane foam complying with AAMA 812, low expansion pressure suitable for filling insulation gaps and voids adjacent to openings to protect against water, air, and sound intrusion.

PART 3 - EXECUTION

3.1 PREPARATION

A. Clean substrates of substances that are harmful to insulation, including removing projections capable of puncturing insulation or vapor retarders, or those that interfere with insulation attachment.

3.2 INSTALLATION, GENERAL

- A. Comply with insulation manufacturer's written instructions applicable to products, applications and applicable codes.
- B. Install insulation that is undamaged, dry, and unsoiled and that has not been left exposed to ice, rain, or snow at any time.
- C. Install insulation with manufacturer's R-value label exposed after insulation is installed.
- D. Extend insulation to envelop entire area to be insulated. Fit tightly around obstructions and fill voids with insulation. Remove projections that interfere with placement.
- E. Provide sizes to fit applications and selected from manufacturer's standard thicknesses, widths, and lengths. Apply single layer of insulation units unless multiple layers are otherwise shown or required to make up total thickness or to

**ARKANSAS DEPARTMENT OF TRANSPORTATION
JOB NO.42-12
EQUIPMENT AND PROCUREMENT SHOP AWNINGS
PROJECT MANUAL**

achieve R-value.

3.3 INSTALLATION OF INSULATION IN FRAMED CONSTRUCTION

- A. Blanket Insulation: Install in cavities formed by framing members in accordance with the following requirements:
 - 1. Use insulation widths and lengths that fill the cavities formed by framing members. If more than one length is required to fill the cavities, provide lengths that will produce a snug fit between ends.
 - 2. Place insulation in cavities formed by framing members to produce a friction fit between edges of insulation and adjoining framing members.
 - 3. For wood-framed construction, install blankets in accordance with ASTM C1320 and as follows:
 - a. With faced blankets having stapling flanges, lap blanket flange over flange of adjacent blanket to maintain continuity of vapor retarder once finish material is installed over it.
- B. Miscellaneous Voids: Install insulation in miscellaneous voids and cavity spaces where required to prevent gaps in insulation using the following materials:
 - 1. Detailing Foam Insulation for Voids: Apply in accordance with manufacturer's written instructions.

3.4 PROTECTION

- A. Protect installed insulation from damage due to harmful weather exposures, physical abuse, and other causes.
- B. Provide temporary coverings or enclosures where insulation is subject to abuse and cannot be concealed and protected by permanent construction immediately after installation.

END OF SECTION 07 21 00

**ARKANSAS DEPARTMENT OF TRANSPORTATION
JOB NO.42-12
EQUIPMENT AND PROCUREMENT SHOP AWNINGS
PROJECT MANUAL**

SECTION 07 25 00 - WEATHER BARRIERS

PART 1 - GENERAL

1.1 SUMMARY

- A. Section Includes:
 - 1. Building wrap.

1.2 ACTION SUBMITTALS

- A. Product Data:
 - 1. For each type of product.
- B. Product Data Submittals: For building wrap, include data on air and water-vapor permeance based on testing in accordance with referenced standards.
- C. Shop Drawings: Show details of building wrap at terminations, openings, and penetrations. Show details of flexible flashing applications.

1.3 DELIVERY, STORAGE, AND HANDLING

- A. Deliver roofing materials to Project site in original containers with seals unbroken and labeled with manufacturer's name, product brand name and type, date of manufacture, approval or listing agency markings, and directions for storing and mixing with other components.

1.4 FIELD CONDITIONS

- A. Weather Limitations: Proceed with installation only when existing and forecasted weather conditions permit roofing system to be installed in accordance with manufacturer's written installation instructions and warranty requirements.

PART 2 - PRODUCTS

2.1 WEATHER BARRIERS

- A. Building Wrap: Flame-spread and smoke-developed indexes of less than 25 and 450, respectively, when tested in accordance with ASTM E84; UV stabilized; and

**ARKANSAS DEPARTMENT OF TRANSPORTATION
JOB NO.42-12
EQUIPMENT AND PROCUREMENT SHOP AWNINGS
PROJECT MANUAL**

acceptable to authorities having jurisdiction.

1. Manufacturers: Subject to compliance with requirements, provide products by one of the following:
 - a. Alpha ProTech
 - b. Barricade Building Products
 - c. Dorken Systems Inc.
 - d. DuPont de Nemours, Inc.
 - e. Kingspan Insulation LLC
 - f. Tytar Geosynthetics; a PGI brand
2. Building Wrap Type: Type I, ASTM E2556/E2556M.
3. Composition Type: Polypropylene woven fabric with coating.
4. Water-Vapor Permeance: Minimum 75 perms in accordance with ASTM E96/E96M, Desiccant Method (Procedure A).
5. Air Permeance: Not more than 0.004 cfm/sq. ft. at 1.57 lbf/sq. ft. when tested in accordance with ASTM E2178.
6. Allowable UV Exposure Time: Not more than 120 days.

PART 3 - EXECUTION

3.1 INSTALLATION OF WEATHER BARRIERS

- A. Weather Barriers:
 1. Building Wrap or Drainage Wrap: Comply with manufacturer's written instructions and warranty requirements.
- B. Install weather barrier accessories for a complete installation with weather barriers in accordance with manufacturers written instructions.

END OF SECTION 07 25 00

**ARKANSAS DEPARTMENT OF TRANSPORTATION
JOB NO.42-12
EQUIPMENT AND PROCUREMENT SHOP AWNINGS
PROJECT MANUAL**

SECTION 07 42 13.13 - FORMED METAL WALL PANELS

PART 1 - GENERAL

1.1 SUMMARY

A. Section Includes:

1. Concealed-fastener, lap-seam metal wall panels.

1.2 ACTION SUBMITTALS

A. Product Data: Include construction details, material descriptions, dimensions of individual components and profiles, and finishes for each type of panel and accessory.

1. Concealed-fastener, lap-seam metal wall panels.

B. Shop Drawings:

1. Include fabrication and installation layouts of metal panels; details of edge conditions, joints, panel profiles, corners, anchorages, attachment system, trim, flashings, closures, and accessories; and special details.

C. Samples for Initial Selection: For each type of metal panel indicated with factory-applied finishes.

1. Include Samples of trim and accessories involving color selection.

1.3 CLOSEOUT SUBMITTALS

A. Maintenance Data: For metal panels to include in maintenance manuals.

1.4 DELIVERY, STORAGE, AND HANDLING

A. Deliver components, metal panels, and other manufactured items so as not to be damaged or deformed. Package metal panels for protection during transportation and handling.

B. Unload, store, and erect metal panels in a manner to prevent bending, warping, twisting, and surface damage.

C. Stack metal panels horizontally on platforms or pallets, covered with suitable

**ARKANSAS DEPARTMENT OF TRANSPORTATION
JOB NO.42-12
EQUIPMENT AND PROCUREMENT SHOP AWNINGS
PROJECT MANUAL**

weathertight and ventilated covering. Store metal panels to ensure dryness, with positive slope for drainage of water. Do not store metal panels in contact with other materials that might cause staining, denting, or other surface damage.

- D. Retain strippable protective covering on metal panels during installation.
- E. Copper Panels: Wear gloves when handling to prevent fingerprints and soiling of surface.

1.5 FIELD CONDITIONS

- A. Weather Limitations: Proceed with installation only when existing and forecasted weather conditions permit assembly of metal panels to be performed according to manufacturers' written instructions and warranty requirements.

1.6 COORDINATION

- A. Coordinate metal panel installation with rain drainage work, flashing, trim, construction of soffits, and other adjoining work to provide a leakproof, secure, and noncorrosive installation.

PART 2 - PRODUCTS

2.1 PERFORMANCE REQUIREMENTS

- A. Air Infiltration: Air leakage of not more than 0.06 cfm/sq. ft. when tested according to ASTM E283 at the following test-pressure difference:
- B. Thermal Movements: Allow for thermal movements from ambient and surface temperature changes by preventing buckling, opening of joints, overstressing of components, failure of joint sealants, failure of connections, and other detrimental effects. Base calculations on surface temperatures of materials due to both solar heat gain and nighttime-sky heat loss.

2.2 CONCEALED-FASTENER, LAP-SEAM METAL WALL PANELS

- A. Provide factory-formed metal panels designed to be field assembled by lapping and interconnecting side edges of adjacent panels and mechanically attaching through panel to supports using concealed fasteners and factory-applied sealant in side laps. Include accessories required for weathertight installation.
- B. Flush-Profile, Concealed-Fastener Metal Wall Panels: Formed with vertical panel edges and a flat pan between panel edges; with flush joint between panels.

**ARKANSAS DEPARTMENT OF TRANSPORTATION
JOB NO.42-12
EQUIPMENT AND PROCUREMENT SHOP AWNINGS
PROJECT MANUAL**

1. Manufacturers: Subject to compliance with requirements, provide products by one of the following:
 - a. Architectural Building Components
 - b. CENTRIA, a Nucor Brand
 - c. Fabral; a brand of Flack Global Metals
 - d. MBCI; Cornerstone Building Brands
 - e. Metal Sales Manufacturing Corporation
 - f. Taylor Metal Products

2. Metallic-Coated Steel Sheet: Zinc-coated (galvanized) steel sheet complying with ASTM A653/A653M, G90 coating designation, or aluminum-zinc alloy-coated steel sheet complying with ASTM A792/A792M, Class AZ50 coating designation; structural quality. Prepainted by the coil-coating process to comply with ASTM A755/A755M.
 - a. Nominal Thickness: 0.034 inch.
 - b. Exterior Finish: Three-coat fluoropolymer.
 - c. Color: As selected by Owner from manufacturer's full range.

3. Panel Coverage: 12 inches.
4. Panel Height: 1.5 inches.

2.3 MISCELLANEOUS MATERIALS

- A. Miscellaneous Metal Subframing and Furring: ASTM C645, cold-formed, metallic-coated steel sheet, ASTM A653/A653M, G90 hot-dip galvanized coating designation or ASTM A792/A792M, Class AZ50 aluminum-zinc-alloy coating designation unless otherwise indicated. Provide manufacturer's standard sections as required for support and alignment of metal panel system.

- B. Panel Accessories: Provide components required for a complete, weathertight panel system including trim, copings, fasciae, mullions, sills, corner units, clips, flashings, sealants, gaskets, fillers, closure strips, and similar items. Match material and finish of metal panels unless otherwise indicated.
 1. Closures: Provide closures at eaves and rakes, fabricated of same metal as metal panels.
 2. Backing Plates: Provide metal backing plates at panel end splices, fabricated from material recommended by manufacturer.
 3. Closure Strips: Closed-cell, expanded, cellular, rubber or crosslinked, polyolefin-foam or closed-cell laminated polyethylene; minimum 1-inch-thick, flexible closure strips; cut or premolded to match metal panel profile. Provide closure strips where indicated or necessary to ensure weathertight construction.

- C. Flashing and Trim: Provide flashing and trim formed from same material as

**ARKANSAS DEPARTMENT OF TRANSPORTATION
JOB NO.42-12
EQUIPMENT AND PROCUREMENT SHOP AWNINGS
PROJECT MANUAL**

metal panels as required to seal against weather and to provide finished appearance. Locations include, but are not limited to, bases, drips, sills, jambs, corners, endwalls, framed openings, rakes, fasciae, parapet caps, soffits, reveals, and fillers. Finish flashing and trim with same finish system as adjacent metal panels.

- D. Panel Sealants: Provide sealant type recommended by manufacturer that are compatible with panel materials, are nonstaining, and do not damage panel finish.
 - 1. Sealant Tape: Pressure-sensitive, 100 percent solids, gray polyisobutylene compound sealant tape with release-paper backing. Provide permanently elastic, nonsag, nontoxic, nonstaining tape 1/2 inch wide and 1/8 inch thick.
 - 2. Joint Sealant: ASTM C920; elastomeric polyurethane or silicone sealant; of type, grade, class, and use classifications required to seal joints in metal panels and remain weathertight; and as recommended in writing by metal panel manufacturer.
 - 3. Butyl-Rubber-Based, Solvent-Release Sealant: ASTM C1311.

2.4 FABRICATION

- A. Fabricate and finish metal panels and accessories at the factory, by manufacturer's standard procedures and processes, as necessary to fulfill indicated performance requirements demonstrated by laboratory testing. Comply with indicated profiles and with dimensional and structural requirements.
- B. Provide panel profile, including major ribs and intermediate stiffening ribs, if any, for full length of panel.
- C. Sheet Metal Flashing and Trim: Fabricate flashing and trim to comply with manufacturer's recommendations and recommendations in SMACNA's "Architectural Sheet Metal Manual" that apply to design, dimensions, metal, and other characteristics of item indicated.
 - 1. Form exposed sheet metal accessories that are without excessive oil canning, buckling, and tool marks and that are true to line and levels indicated, with exposed edges folded back to form hems.
 - 2. Seams for Aluminum: Fabricate nonmoving seams with flat-lock seams. Form seams and seal with epoxy seam sealer. Rivet joints for additional strength.
 - 3. Seams for Other Than Aluminum: Fabricate nonmoving seams in accessories with flat-lock seams. Tin edges to be seamed, form seams, and solder.
 - 4. Sealed Joints: Form nonexpansion, but movable, joints in metal to accommodate sealant and to comply with SMACNA standards.
 - 5. Conceal fasteners and expansion provisions where possible. Exposed fasteners are not allowed on faces of accessories exposed to view.

**ARKANSAS DEPARTMENT OF TRANSPORTATION
JOB NO.42-12
EQUIPMENT AND PROCUREMENT SHOP AWNINGS
PROJECT MANUAL**

6. Fabricate cleats and attachment devices from same material as accessory being anchored or from compatible, noncorrosive metal recommended in writing by metal panel manufacturer.
 - a. Size: As recommended by SMACNA's "Architectural Sheet Metal Manual" or metal wall panel manufacturer for application but not less than thickness of metal being secured.

2.5 FINISHES

- A. Protect mechanical and painted finishes on exposed surfaces from damage by applying a strippable, temporary protective covering before shipping.
- B. Appearance of Finished Work: Variations in appearance of abutting or adjacent pieces are acceptable if they are within one-half of the range of approved Samples. Noticeable variations in same piece are not acceptable. Variations in appearance of other components are acceptable if they are within the range of approved Samples and are assembled or installed to minimize contrast.
- C. Steel Panels and Accessories:
 1. Three-Coat Fluoropolymer: AAMA 621. Fluoropolymer finish containing not less than 70 percent polyvinylidene fluoride (PVDF) resin by weight in both color coat and clear topcoat. Prepare, pretreat, and apply coating to exposed metal surfaces to comply with coating and resin manufacturers' written instructions.
 2. Concealed Finish: Apply pretreatment and manufacturer's standard white or light-colored acrylic or polyester backer finish consisting of prime coat and wash coat with a minimum total dry film thickness of 0.5 mil.

PART 3 - EXECUTION

3.1 EXAMINATION

- A. Examine substrates, areas, and conditions, with Installer present, for compliance with requirements for installation tolerances, metal panel supports, and other conditions affecting performance of the Work.
 1. Examine wall sheathing to verify that sheathing joints are supported by framing or blocking and that installation is within flatness tolerances required by metal wall panel manufacturer.
 - a. Verify that air- or water-resistive barriers have been installed over sheathing or backing substrate to prevent air infiltration or water penetration.

**ARKANSAS DEPARTMENT OF TRANSPORTATION
JOB NO.42-12
EQUIPMENT AND PROCUREMENT SHOP AWNINGS
PROJECT MANUAL**

- B. Examine roughing-in for components and systems penetrating metal panels to verify actual locations of penetrations relative to seam locations of metal panels before installation.
- C. Proceed with installation only after unsatisfactory conditions have been corrected.

3.2 PREPARATION

- A. Miscellaneous Supports: Install subframing, furring, and other miscellaneous panel support members and anchorages according to ASTM C754 and metal panel manufacturer's written recommendations.

3.3 INSTALLATION OF METAL PANELS

- A. Install metal panels according to manufacturer's written instructions in orientation, sizes, and locations indicated. Install panels perpendicular to supports unless otherwise indicated. Anchor metal panels and other components of the Work securely in place, with provisions for thermal and structural movement.
 - 1. Shim or otherwise plumb substrates receiving metal panels.
 - 2. Flash and seal metal panels at perimeter of all openings. Fasten with self-tapping screws. Do not begin installation until air- or water-resistive barriers and flashings that will be concealed by metal panels are installed.
 - 3. Install screw fasteners in predrilled holes.
 - 4. Locate and space fastenings in uniform vertical and horizontal alignment.
 - 5. Install flashing and trim as metal panel work proceeds.
 - 6. Locate panel splices over, but not attached to, structural supports. Stagger panel splices and end laps to avoid a four-panel lap splice condition.
 - 7. Align bottoms of metal panels and fasten with blind rivets, bolts, or self-tapping screws. Fasten flashings and trim around openings and similar elements with self-tapping screws.
 - 8. Provide weathertight escutcheons for pipe- and conduit-penetrating panels.
- B. Fasteners:
 - 1. Steel Panels: Use stainless steel fasteners for surfaces exposed to the exterior; use galvanized-steel fasteners for surfaces exposed to the interior.
- C. Metal Protection: Where dissimilar metals contact each other or corrosive substrates, protect against galvanic action as recommended in writing by metal panel manufacturer.
- D. Lap-Seam Metal Panels: Fasten metal panels to supports with fasteners at each lapped joint at location and spacing recommended by manufacturer.

**ARKANSAS DEPARTMENT OF TRANSPORTATION
JOB NO.42-12
EQUIPMENT AND PROCUREMENT SHOP AWNINGS
PROJECT MANUAL**

1. Lap ribbed or fluted sheets one full rib. Apply panels and associated items true to line for neat and weathertight enclosure.
2. Provide metal-backed washers under heads of exposed fasteners bearing on weather side of metal panels.
3. Locate and space exposed fasteners in uniform vertical and horizontal alignment. Use proper tools to obtain controlled uniform compression for positive seal without rupture of washer.
4. Install screw fasteners with power tools having controlled torque adjusted to compress washer tightly without damage to washer, screw threads, or panels. Install screws in predrilled holes.
5. Flash and seal panels with weather closures at perimeter of all openings.

E. Watertight Installation:

1. Apply a continuous ribbon of sealant or tape to seal lapped joints of metal panels, using sealant or tape as recommend by manufacturer on side laps of nesting-type panels; and elsewhere as needed to make panels watertight.
2. Provide sealant or tape between panels and protruding equipment, vents, and accessories.
3. At panel splices, nest panels with minimum 6-inch end lap, sealed with sealant and fastened together by interlocking clamping plates.

F. Accessory Installation: Install accessories with positive anchorage to building and weathertight mounting, and provide for thermal expansion. Coordinate installation with flashings and other components.

1. Install components required for a complete metal panel system including trim, copings, corners, seam covers, flashings, sealants, gaskets, fillers, closure strips, and similar items. Provide types indicated by metal wall panel manufacturer; or, if not indicated, provide types recommended by metal panel manufacturer.

G. Flashing and Trim: Comply with performance requirements, manufacturer's written installation instructions, and SMACNA's "Architectural Sheet Metal Manual." Provide concealed fasteners where possible, and set units true to line and level as indicated. Install work with laps, joints, and seams that are permanently watertight.

1. Install exposed flashing and trim that is without buckling and tool marks, and that is true to line and levels indicated, with exposed edges folded back to form hems. Install sheet metal flashing and trim to fit substrates and achieve waterproof performance.
2. Expansion Provisions: Provide for thermal expansion of exposed flashing and trim. Space movement joints at a maximum of 10 feet with no joints allowed within 24 inches of corner or intersection. Where lapped expansion provisions cannot be used or would not be sufficiently waterproof, form expansion joints of intermeshing hooked flanges, not less than 1 inch deep,

**ARKANSAS DEPARTMENT OF TRANSPORTATION
JOB NO.42-12
EQUIPMENT AND PROCUREMENT SHOP AWNINGS
PROJECT MANUAL**

filled with mastic sealant (concealed within joints).

3.4 CLEANING AND PROTECTION

- A. Remove temporary protective coverings and strippable films, if any, as metal panels are installed, unless otherwise indicated in manufacturer's written installation instructions. On completion of metal panel installation, clean finished surfaces as recommended by metal panel manufacturer. Maintain in a clean condition during construction.
- B. After metal panel installation, clear weep holes and drainage channels of obstructions, dirt, and sealant.
- C. Replace metal panels that have been damaged or have deteriorated beyond successful repair by finish touchup or similar minor repair procedures.

END OF SECTION 07 42 13.13

**ARKANSAS DEPARTMENT OF TRANSPORTATION
JOB NO.42-12
EQUIPMENT AND PROCUREMENT SHOP AWNINGS
PROJECT MANUAL**

SECTION 07 72 53 - SNOW GUARDS

PART 1 - GENERAL

1.1 SUMMARY

- A. Section Includes:
 - 1. Rail-type, seam-mounted snow guards.

1.2 ACTION SUBMITTALS

- A. Product Data: Include construction details, material descriptions, dimensions of individual components and profiles, and finishes.
 - 1. Rail-type, seam-mounted snow guards.
- B. Shop Drawings: Include roof plans showing layouts and attachment details of snow guards.
 - 1. Include details of rail-type snow guards.
- C. Samples:
 - 1. Rail-Type Snow Guards: Bracket, 12-inch- long rail, and installation hardware.
 - a. For units with factory-applied finishes, submit manufacturer's standard color selections.

1.3 FIELD CONDITIONS

- A. Weather Limitations: Proceed with installation only when existing and forecasted weather conditions permit adhesive-mounted snow guards to be installed, and adhesive cured, according to adhesive manufacturer's written instructions.

PART 2 - PRODUCTS

2.1 PERFORMANCE REQUIREMENTS

- A. Performance Requirements: Provide snow guards that withstand exposure to weather and resist thermally induced movement without failure, rattling, or

**ARKANSAS DEPARTMENT OF TRANSPORTATION
JOB NO.42-12
EQUIPMENT AND PROCUREMENT SHOP AWNINGS
PROJECT MANUAL**

fastener disengagement due to defective manufacture, fabrication, installation, or other defects in construction.

1. Temperature Change: 120 deg F, ambient; 180 deg F, material surfaces.

2.2 RAIL-TYPE SNOW GUARDS

A. Rail-Type, Seam-Mounted Snow Guards:

1. Manufacturers: Subject to compliance with requirements, provide products by one of the following:
 - a. Alpine SnowGuards
 - b. Berger; division of OmniMax International, Inc.
 - c. IceBlox Inc.
 - d. LMCurbs
 - e. PMC Industries, Inc
 - f. Rocky Mountain Snow Guards, Inc.
 - g. S-5! Metal Roof Innovations, Ltd.
2. Description: Snow guard rails fabricated from metal pipes, bars, or extrusions, anchored to brackets and equipped with two rails.
3. Brackets and Baseplate: ASTM B209 aluminum; mill finished.
4. Bars: ASTM B221 aluminum; mill finish.
 - a. Profile: Round.
5. Seam Clamps: ASTM B221 aluminum extrusion or ASTM B85/B85M aluminum casting with stainless steel set screws incorporating round nonpenetrating point; designed for use with applicable roofing system to which clamp is attached.

PART 3 - EXECUTION

3.1 EXAMINATION

- A. Examine substrates and conditions, with Installer present, for compliance with requirements for installation tolerances, snow guard attachment, and other conditions affecting performance of the Work.
 1. Verify compatibility with and suitability of substrates, including compatibility with existing finishes or primers.
- B. Proceed with installation only after unsatisfactory conditions have been corrected.

**ARKANSAS DEPARTMENT OF TRANSPORTATION
JOB NO.42-12
EQUIPMENT AND PROCUREMENT SHOP AWNINGS
PROJECT MANUAL**

3.2 INSTALLATION

- A. Install snow guards according to manufacturer's written instructions.
 - 1. Space rows as recommended by manufacturer.

- B. Attachment for Standing-Seam Metal Roofing:
 - 1. Do not use fasteners that will penetrate metal roofing or fastening methods that void metal roofing finish warranty.
 - 2. Rail-Type, Seam-Mounted Snow Guards:
 - a. Install brackets to vertical ribs in straight rows.
 - b. Secure with stainless steel set screws, incorporating round nonpenetrating point, on same side of standing seam.
 - c. Torque set screw in accordance with manufacturer's written instructions.
 - d. Install cross members to brackets.

END OF SECTION 07 72 53

**ARKANSAS DEPARTMENT OF TRANSPORTATION
JOB NO.42-12
EQUIPMENT AND PROCUREMENT SHOP AWNINGS
PROJECT MANUAL**

SECTION 08 11 13 - HOLLOW METAL DOORS AND FRAMES

PART 1 - GENERAL

1.1 SUMMARY

A. Section Includes:

1. Exterior standard steel doors and frames.

B. Related Requirements:

1. Section 087100 "Door Hardware" for door hardware for hollow-metal doors.

1.2 ACTION SUBMITTALS

A. Product Data:

1. Exterior standard steel doors and frames.

B. Product Data Submittals: For each product.

1. Include construction details, material descriptions, core descriptions, and finishes.

C. Shop Drawings: Include the following:

1. Elevations of each door type.
2. Details of doors, including vertical- and horizontal-edge details and metal thicknesses.
3. Frame details for each frame type, including dimensioned profiles and metal thicknesses.
4. Locations of reinforcement and preparations for hardware.
5. Details of each different wall opening condition.
6. Details of anchorages, joints, field splices, and connections.
7. Details of accessories.
8. Details of moldings, removable stops, and glazing.

D. Product Schedule: For hollow-metal doors and frames, prepared by or under the supervision of supplier, using same reference numbers for details and openings as those on Drawings. Coordinate with final door hardware schedule.

**ARKANSAS DEPARTMENT OF TRANSPORTATION
JOB NO.42-12
EQUIPMENT AND PROCUREMENT SHOP AWNINGS
PROJECT MANUAL**

1.3 DELIVERY, STORAGE, AND HANDLING

- A. Deliver hollow-metal doors and frames palletized, packaged, or crated to provide protection during transit and Project-site storage. Do not use nonvented plastic.
 - 1. Provide additional protection to prevent damage to factory-finished units.
- B. Deliver welded frames with two removable spreader bars across bottom of frames, tack welded to jambs and mullions.
- C. Store hollow-metal doors and frames vertically under cover at Project site with head up. Place on minimum 4-inch- high wood blocking. Provide minimum 1/4-inch space between each stacked door to permit air circulation.

PART 2 - PRODUCTS

2.1 EXTERIOR STANDARD STEEL DOORS AND FRAMES

- A. Construct hollow-metal doors and frames to comply with standards indicated for materials, fabrication, hardware locations, hardware reinforcement, tolerances, and clearances, and as specified.
- B. Heavy-Duty Doors and Frames: ANSI/SDI A250.8, Level 2; ANSI/SDI A250.4, Level B. At locations indicated in the Door and Frame Schedule on Drawings.
 - 1. Doors:
 - a. Type: As indicated in the Door and Frame Schedule on Drawings.
 - b. Thickness: 1-3/4 inches.
 - c. Face: Metallic-coated steel sheet, minimum thickness of 0.042 inch, with minimum A40 coating.
 - d. Edge Construction: Model 1, Full Flush.
 - e. Edge Bevel: Provide manufacturer's standard beveled or square edges.
 - f. Top Edge Closures: Close top edges of doors with flush closures of same material as face sheets. Seal joints against water penetration.
 - g. Bottom Edges: Close bottom edges of doors where required for attachment of weather stripping with end closures or channels of same material as face sheets. Provide weep-hole openings in bottoms of exterior doors to permit moisture to escape.
 - h. Core: Polyisocyanurate.
 - 2. Frames:
 - a. Materials: Metallic-coated steel sheet, minimum thickness of 0.053 inch, with minimum A40 coating.
 - b. Construction: Full profile welded.

**ARKANSAS DEPARTMENT OF TRANSPORTATION
JOB NO.42-12
EQUIPMENT AND PROCUREMENT SHOP AWNINGS
PROJECT MANUAL**

3. Exposed Finish: Prime.

2.2 FRAME ANCHORS

- A. Jamb Anchors:
 1. Type: Anchors of minimum size and type required by applicable door and frame standard, and suitable for performance level indicated.
 2. Quantity: Minimum of three anchors per jamb, with one additional anchor for frames with no floor anchor. Provide one additional anchor for each 24 inches of frame height above 7 feet.
- B. Floor Anchors: Provide floor anchors for each jamb and mullion that extends to floor.
- C. Material: ASTM A879/A879M, Commercial Steel (CS), 04Z coating designation; mill phosphatized.
 1. For anchors built into exterior walls, steel sheet complying with ASTM A1008/A1008M or ASTM A1011/A1011M; hot-dip galvanized in accordance with ASTM A153/A153M, Class B.

2.3 MATERIALS

- A. Cold-Rolled Steel Sheet: ASTM A1008/A1008M, Commercial Steel (CS), Type B; suitable for exposed applications.
- B. Hot-Rolled Steel Sheet: ASTM A1011/A1011M, Commercial Steel (CS), Type B; free of scale, pitting, or surface defects; pickled and oiled.
- C. Metallic-Coated Steel Sheet: ASTM A653/A653M, Commercial Steel (CS), Type B.
- D. Inserts, Bolts, and Fasteners: Hot-dip galvanized in accordance with ASTM A153/A153M.
- E. Power-Actuated Fasteners in Concrete: Fastener system of type suitable for application indicated, fabricated from corrosion-resistant materials, with clips or other accessory devices for attaching hollow-metal frames of type indicated.

2.4 FABRICATION

- A. Hollow-Metal Frames: Fabricate in one piece except where handling and shipping limitations require multiple sections. Where frames are fabricated in sections, provide alignment plates or angles at each joint, fabricated of metal of same or greater thickness as frames.

**ARKANSAS DEPARTMENT OF TRANSPORTATION
JOB NO.42-12
EQUIPMENT AND PROCUREMENT SHOP AWNINGS
PROJECT MANUAL**

1. Provide countersunk, flat- or oval-head exposed screws and bolts for exposed fasteners unless otherwise indicated.
 2. Door Silencers: Except on weather-stripped frames, drill stops to receive door silencers as follows. Keep holes clear during construction.
 - a. Single-Door Frames: Drill stop in strike jamb to receive three door silencers.
 - b. Double-Door Frames: Drill stop in head jamb to receive two door silencers.
- B. Hardware Preparation: Factory prepare hollow-metal doors and frames to receive templated mortised hardware, and electrical wiring; include cutouts, reinforcement, mortising, drilling, and tapping in accordance with ANSI/SDI A250.6, the Door Hardware Schedule on Drawings, and templates.
1. Reinforce doors and frames to receive nontemplated, mortised, and surface-mounted door hardware.
 2. Comply with BHMA A156.115 for preparing hollow-metal doors and frames for hardware.

2.5 STEEL FINISHES

- A. Prime Finish: Clean, pretreat, and apply manufacturer's standard primer.
1. Shop Primer: Manufacturer's standard, fast-curing, lead- and chromate-free primer complying with ANSI/SDI A250.10; recommended by primer manufacturer for substrate; compatible with substrate and field-applied coatings despite prolonged exposure.

PART 3 - EXECUTION

3.1 PREPARATION

- A. Remove welded-in shipping spreaders installed at factory. Restore exposed finish by grinding, filling, and dressing, as required to make repaired area smooth, flush, and invisible on exposed faces. Touch up factory-applied finishes where spreaders are removed.
- B. Drill and tap doors and frames to receive nontemplated, mortised, and surface-mounted door hardware.

3.2 INSTALLATION

- A. Hollow-Metal Frames: Comply with ANSI/SDI A250.11.

**ARKANSAS DEPARTMENT OF TRANSPORTATION
JOB NO.42-12
EQUIPMENT AND PROCUREMENT SHOP AWNINGS
PROJECT MANUAL**

1. Set frames accurately in position; plumbed, aligned, and braced securely until permanent anchors are set. After wall construction is complete, remove temporary braces without damage to completed Work.
 - a. Where frames are fabricated in sections, field splice at approved locations by welding face joint continuously; grind, fill, dress, and make splice smooth, flush, and invisible on exposed faces. Touch-up finishes.
 - b. Install frames with removable stops located on secure side of opening.
 2. Floor Anchors: Secure with postinstalled expansion anchors.
 - a. Floor anchors may be set with power-actuated fasteners instead of postinstalled expansion anchors if so indicated and approved on Shop Drawings.
 3. Solidly pack mineral-fiber insulation inside frames.
 4. Installation Tolerances: Adjust hollow-metal frames to the following tolerances:
 - a. Squareness: Plus or minus 1/16 inch, measured at door rabbet on a line 90 degrees from jamb perpendicular to frame head.
 - b. Alignment: Plus or minus 1/16 inch, measured at jambs on a horizontal line parallel to plane of wall.
 - c. Twist: Plus or minus 1/16 inch, measured at opposite face corners of jambs on parallel lines, and perpendicular to plane of wall.
 - d. Plumbness: Plus or minus 1/16 inch, measured at jambs at floor.
- B. Hollow-Metal Doors: Fit and adjust hollow-metal doors accurately in frames, within clearances specified below.
1. Non-Fire-Rated Steel Doors: Comply with ANSI/SDI A250.8.

3.3 REPAIR

- A. Prime-Coat Touchup: Immediately after erection, sand smooth rusted or damaged areas of prime coat and apply touchup of compatible air-drying, rust-inhibitive primer.

END OF SECTION 08 11 13

**ARKANSAS DEPARTMENT OF TRANSPORTATION
JOB NO.42-12
EQUIPMENT AND PROCUREMENT SHOP AWNINGS
PROJECT MANUAL**

SECTION 08 36 13 - SECTIONAL DOORS

PART 1 - GENERAL

1.1 SUMMARY

A. Section Includes:

1. Sectional-door assemblies.

1.2 ACTION SUBMITTALS

A. Product Data: For each type and size of sectional door and accessory.

1. Include construction details, material descriptions, dimensions of individual components, profile door sections, and finishes.
2. For power-operated doors, include rated capacities, operating characteristics, electrical characteristics, and furnished accessories.

B. Shop Drawings: For each installation and for components not dimensioned or detailed in manufacturer's product data.

1. Include plans, elevations, sections, and mounting details.
2. Include details of equipment assemblies. Indicate dimensions, required clearances, method of field assembly, components, and location and size of each field connection.
3. Include points of attachment and their corresponding static and dynamic loads imposed on structure.
4. Include diagrams for power, signal, and control wiring.

C. Samples for Initial Selection: For units with factory-applied finishes.

1. Include Samples of accessories involving color selection.

1.3 CLOSEOUT SUBMITTALS

A. Maintenance Data: For sectional doors to include in maintenance manuals.

B. Manufacturer's warranty.

C. Finish warranty.

**ARKANSAS DEPARTMENT OF TRANSPORTATION
JOB NO.42-12
EQUIPMENT AND PROCUREMENT SHOP AWNINGS
PROJECT MANUAL**

1.4 QUALITY ASSURANCE

- A. Installer Qualifications: An entity that employs installers and supervisors who are trained and approved by manufacturer for both installation and maintenance of units required for this Project.

1.5 WARRANTY

- A. Manufacturer's Warranty: Manufacturer agrees to repair or replace components of sectional doors that fail in materials or workmanship within specified warranty period.
 - 1. Failures include, but are not limited to, the following:
 - a. Structural failures including, but not limited to, excessive deflection.
 - b. Failure of components or operators before reaching required number of operation cycles.
 - c. Faulty operation of hardware.
 - d. Deterioration of metals, metal finishes, and other materials beyond normal weathering and use; rust through.
 - e. Delamination of exterior or interior facing materials.
 - 2. Warranty Period: one year from date of Substantial Completion.
- B. Finish Warranty: Manufacturer agrees to repair or replace components that show evidence of deterioration of factory-applied finishes within specified warranty period.
 - 1. Warranty Period: one year from date of Substantial Completion.

PART 2 - PRODUCTS

2.1 SOURCE LIMITATIONS

- A. Obtain sectional doors from single source from single manufacturer.

2.2 PERFORMANCE REQUIREMENTS

- A. General Performance: Provide sectional doors that comply with performance requirements specified without failure from defective manufacture, fabrication, installation, or other defects in construction.
- B. Structural Performance, Exterior Doors: Capable of withstanding the design wind loads.

**ARKANSAS DEPARTMENT OF TRANSPORTATION
JOB NO.42-12
EQUIPMENT AND PROCUREMENT SHOP AWNINGS
PROJECT MANUAL**

1. Design Wind Load: Uniform pressure (velocity pressure) of 20 lbf/sq. ft., acting inward and outward.
2. Deflection Limits: Design sectional doors to withstand design wind loads without evidencing permanent deformation or disengagement of door components.
 - a. Deflection of door sections in horizontal position (open) shall not exceed 1/120 of door width.
 - b. Deflection of horizontal track assembly shall not exceed 1/240 of door height.
3. Operability under Wind Load: Design sectional doors to remain operable under uniform pressure (velocity pressure) of 20 lbf/sq. ft. wind load, acting inward and outward.

2.3 SECTIONAL-DOOR ASSEMBLY

- A. Sectional Door: Provide steel sectional door formed with hinged sections and fabricated so that finished door assembly is rigid and aligned with tight hairline joints; free of warp, twist, and deformation; and complies with requirements in DASMA 102.
 1. Manufacturers: Subject to compliance with requirements, provide products by one the following:
 - a. Amarr; an ASSA ABLOY Group company
 - b. Clopay Building Products
 - c. Fimbel Architectural Doors
 - d. Haas Door; a Nofziger Company
 - e. Overhead Door Corporation
 - f. Martin Door Manufacturing
 - g. Raynor Garage Doors
 - h. Wayne Dalton; a division of Overhead Door Corporation
 - i. Windsor Door
 - j. Or approved equal
- B. Operation Cycles: Door components and operators capable of operating for not less than 50,000 operation cycles. One operation cycle is complete when door is opened from closed position to the open position and returned to closed position.
- C. Air Infiltration: Maximum rate of 0.4 cfm/sq. ft. when tested in accordance with ASTM E283 or DASMA 105.
- D. U-Value: 0.052 Btu/sq. ft. x h x deg F.
- E. Steel Door Sections: ASTM A653/A653M, zinc-coated (galvanized), cold-rolled, commercial steel sheet with G60 zinc coating.

**ARKANSAS DEPARTMENT OF TRANSPORTATION
JOB NO.42-12
EQUIPMENT AND PROCUREMENT SHOP AWNINGS
PROJECT MANUAL**

1. Door-Section Thickness: 2 inches.
2. Section Faces:
 - a. Thermal-Break Construction: Provide sections with continuous thermal-break construction separating the exterior and interior faces of door.
 - b. Exterior Face: Fabricated from single sheets, not more than 24 inches high; with horizontal meeting edges rolled to continuous, interlocking, keyed, rabbeted, shiplap, or tongue-in-groove, weather- and pinch-resistant seals and reinforcing flange return.
 - 1) Steel Sheet Thickness: 0.028-inch nominal coated thickness.
 - 2) Surface: Manufacturer's standard, ribbed.
 - c. Interior Face: Enclose insulation completely within steel exterior facing and interior facing material, with no exposed insulation. Provide the following interior-facing material:
 - 1) Zinc-Coated (Galvanized) Steel Sheet: With minimum nominal coated thickness of 0.025 inch.
3. End Stiles: Enclose open ends of sections with channel end stiles formed from galvanized-steel sheet not less than 0.040-inch nominal coated thickness and welded to door section.
4. Intermediate Stiles: Provide intermediate stiles formed from not less than 0.040-inch- thick galvanized-steel sheet, cut to door section profile, and welded in place. Space stiles not more than 48 inches apart.
5. Section Reinforcing: Horizontal and diagonal reinforcement as required to stiffen door and for wind loading. Provide galvanized-steel bars, struts, trusses, or strip steel, formed to depth and bolted or welded in place.
 - a. Bottom Section: Reinforce section with a continuous channel or angle conforming to bottom-section profile and allowing installation of astragal (weatherseal).
 - b. Hardware Locations: Provide reinforcement for hardware attachment.
6. Thermal Insulation: Insulate interior of steel sections with door manufacturer's standard CFC-free insulation of type indicated below:
 - a. Board Insulation: Polystyrene, secured to exterior face sheet.
 - b. Foamed-in-Place Insulation: Polyurethane, foamed in place to completely fill interior of section and pressure bonded to face sheets to prevent delamination under wind load.
 - c. Fire-Resistance Characteristics: Maximum flame-spread and smoke-developed indexes of 75 and 450, respectively, in accordance with ASTM E84.

- F. Aluminum Sections: ASTM B221 extruded-aluminum stile and rail members of

**ARKANSAS DEPARTMENT OF TRANSPORTATION
JOB NO.42-12
EQUIPMENT AND PROCUREMENT SHOP AWNINGS
PROJECT MANUAL**

alloy and temper standard with manufacturer for type of use and finish indicated; in minimum thickness required to comply with requirements; with rail and stile dimensions and profiles indicated on Drawings; and with overlapped or interlocked weather- and pinch-resistant seal at meeting rails.

1. Door-Section Thickness: 2 inches.
 2. Section Reinforcing: Continuous horizontal and diagonal reinforcement as required to stiffen door and for wind loading. Ensure that reinforcement does not obstruct vision lites.
 - a. Hardware Locations: Provide reinforcement for hardware attachment.
 3. Insulated Stiles and Rails: Fill stiles and rails manufacturer's standard polyurethane expanding foam.
- G. Track: Manufacturer's standard, galvanized-steel, standard-lift track system. Provide complete system including brackets, bracing, and reinforcement to ensure rigid support of ball-bearing roller guides.
1. Material: Galvanized steel, ASTM A653/A653M, minimum G60 zinc coating.
 2. Size: As recommended in writing by manufacturer for door size, weight, track configuration and door clearances indicated on Drawings.
 3. Track Reinforcement and Supports: Provide galvanized-steel members to support track without sag, sway, and vibration during opening and closing of doors. Slot vertical sections of track spaced 2 inches apart for door-drop safety device.
 - a. Vertical Track: Incline vertical track to ensure weathertight closure at jambs. Provide continuous angle attached to track and wall.
 - b. Horizontal Track: Provide continuous reinforcing angle from curve in track to end of track, attached to track and supported at points by laterally braced attachments to overhead structural members.
- H. Weatherseals: Replaceable, adjustable, continuous, compressible weather-stripping gaskets of flexible vinyl, rubber, or neoprene fitted to bottom top, and jambs of door. Provide combination bottom weatherseal and sensor edge for bottom seal.
- I. Hardware: Heavy-duty, corrosion-resistant hardware, with hot-dip galvanized, stainless steel, or other corrosion-resistant fasteners, to suit door type.
1. Hinges: Heavy-duty, galvanized-steel hinges of not less than 0.079-inch nominal coated thickness at each end stile and at each intermediate stile, in accordance with manufacturer's written recommendations for door size.
 - a. Attach hinges to door sections through stiles and rails with bolts and lock nuts or lock washers and nuts. Use rivets or self-tapping

**ARKANSAS DEPARTMENT OF TRANSPORTATION
JOB NO.42-12
EQUIPMENT AND PROCUREMENT SHOP AWNINGS
PROJECT MANUAL**

- fasteners where access to nuts is impossible.
 - b. Provide double-end hinges where required for doors more than 16 ft. wide unless otherwise recommended by door manufacturer in writing.
 - 2. Rollers: Heavy-duty rollers with steel ball bearings in case-hardened steel races, mounted to suit slope of track. Extend roller shaft through both hinges where double hinges are required. Match roller-tire diameter to track width.
 - a. Roller-Tire Material: Case-hardened steel.
 - 3. Push/Pull Handles: Equip each door with galvanized-steel lifting handles on each side of door, finished to match door.
 - J. Locking Device:
 - 1. Slide Bolt: Fabricate with side-locking bolts to engage through slots in tracks for locking by padlock, located on single-jamb side, operable from inside only.
 - 2. Locking Device Assembly: Fabricate with cylinder lock, spring-loaded deadbolt, operating handle, cam plate, and adjustable locking bars to engage through slots in tracks.
 - a. Lock Cylinders: Cylinders standard with manufacturer.
 - b. Keying: Keyed to building keying system.
 - c. Keys: Two for each cylinder.
 - 3. Chain Lock Keeper: Suitable for padlock.
 - 4. Safety Interlock Switch: Equip power-operated doors with safety interlock switch to disengage power supply when door is locked.
 - K. Counterbalance Mechanism:
 - 1. Torsion Spring: Adjustable-tension torsion springs complying with requirements of DASMA 102 for number of operation cycles indicated, mounted on torsion shaft.
 - 2. Cable Drums and Shaft for Doors: Cast-aluminum cable drums mounted on torsion shaft and grooved to receive door-lifting cables as door is raised.
 - a. Mount counterbalance mechanism with manufacturer's standard ball-bearing brackets at each end of torsion shaft.
 - b. Provide one additional midpoint bracket for shafts up to 16 ft. long and two additional brackets at one-third points to support shafts more than 16 ft. long unless closer spacing is recommended in writing by door manufacturer.
 - 3. Cables: Galvanized-steel, multistrand, lifting cables with cable safety factor of at least 5 to 1.
 - 4. Cable Safety Device: Include a spring-loaded steel or bronze cam mounted

**ARKANSAS DEPARTMENT OF TRANSPORTATION
JOB NO.42-12
EQUIPMENT AND PROCUREMENT SHOP AWNINGS
PROJECT MANUAL**

to bottom door roller assembly on each side and designed to automatically stop door if lifting cable breaks.

5. Bracket: Provide anchor support bracket as required to connect stationary end of spring to the wall and to level the shaft and prevent sag.
 6. Bumper: Provide spring bumper at each horizontal track to cushion door at end of opening operation.
- L. Electric Door Operator: Electric door operator assembly of size and capacity recommended by door manufacturer for door and operation cycles specified, with electric motor and factory-prewired motor controls, starter, gear-reduction unit, solenoid-operated brake, clutch, control stations, control devices, integral gearing for locking door, and accessories required for proper operation.
1. Comply with NFPA 70.
 2. Control equipment complying with NEMA ICS 1, NEMA ICS 2, and NEMA ICS 6; with NFPA 70, Class 2 control circuit, maximum 24 V ac or dc.
 3. Safety: Listed in accordance with UL 325 by a qualified testing agency for commercial or industrial use; moving parts of operator enclosed or guarded if exposed and mounted at 8 ft. or lower.
 4. Usage Classification: Standard duty, up to 25 cycles per hour and up to 90 cycles per day.
 5. Operator Type: Manufacturer's standard for door requirements.
 6. Motor: Reversible-type with controller (disconnect switch) for interior, clean, and dry motor exposure. Use adjustable motor-mounting bases for belt-driven operators.
 - a. Motor Size: As required to start, accelerate, and operate door in either direction from any position, at a speed not less than 8 in./sec. and not more than 12 in./sec., without exceeding nameplate ratings or service factor.
 - b. Electrical Characteristics:
 - 1) Phase: Single phase.
 - 2) Volts: 115 V.
 7. Limit Switches: Equip motorized door with adjustable switches interlocked with motor controls and set to automatically stop door at fully opened and fully closed positions.
 8. Obstruction Detection: Automatic external entrapment protection consisting of automatic safety sensor capable of protecting full width of door opening. Activation of device immediately stops and reverses downward door travel.
 - a. Monitored Entrapment Protection: Electric sensor edge on bottom section designed to interface with door-operator control circuit to detect damage to or disconnection of sensor and complying with requirements in UL 325.
 - b. Unmonitored Entrapment Protection: Pneumatic sensor edge, black, located within weatherseal mounted to bottom bar.

**ARKANSAS DEPARTMENT OF TRANSPORTATION
JOB NO.42-12
EQUIPMENT AND PROCUREMENT SHOP AWNINGS
PROJECT MANUAL**

9. Control Station: Surface mounted, three-position (open, close, and stop) control.
 - a. Operation: Push button interior and key exterior.
 - b. Interior-Mounted Unit: Full-guarded, surface-mounted, standard-duty, weatherproof-type, NEMA ICS 6, Type 4 enclosure.
 - c. Exterior-Mounted Unit: Full-guarded, surface-mounted, standard-duty, weatherproof type, NEMA ICS 6, Type 4 enclosure.
 10. Emergency Manual Operation: Push-up type designed so required force for door operation does not exceed 25 lbf.
 11. Emergency Operation Disconnect Device: Hand-operated disconnect mechanism for automatically engaging manual operator and releasing brake for emergency manual operation while disconnecting motor without affecting timing of limit switch. Mount mechanism so it is accessible from floor level. Include interlock device to automatically prevent motor from operating when emergency operator is engaged.
 12. Motor Removal: Design operator so motor can be removed without disturbing limit-switch adjustment and without affecting emergency manual operation.
- M. Metal Finish: Comply with NAAMM/NOMMA's "Metal Finishes Manual for Architectural and Metal Products (AMP 500-06)" for recommendations for applying and designating finishes.
1. Baked-Enamel or Powder-Coat Finish: Manufacturer's standard baked-on finish consisting of prime coat and thermosetting topcoat. Comply with coating manufacturer's written instructions for cleaning, pretreatment, application, and minimum dry film thickness.
 - a. Color and Gloss: As selected by Owner from manufacturer's full range..

PART 3 - EXECUTION

3.1 EXAMINATION

- A. Examine substrates, areas, and conditions, with Installer present, for compliance with requirements for substrate construction and other conditions affecting performance of the Work.
- B. Proceed with installation only after unsatisfactory conditions have been corrected.

**ARKANSAS DEPARTMENT OF TRANSPORTATION
JOB NO.42-12
EQUIPMENT AND PROCUREMENT SHOP AWNINGS
PROJECT MANUAL**

3.2 INSTALLATION

- A. Install sectional doors and operating equipment complete with necessary hardware, anchors, inserts, hangers, and equipment supports; in accordance with manufacturer's written instructions.
- B. Tracks:
 - 1. Fasten vertical track assembly to opening jambs and framing with fasteners spaced not more than 24 inches apart.
 - 2. Hang horizontal track assembly from structural overhead framing with angles or channel hangers attached to framing by welding or bolting, or both. Provide sway bracing, diagonal bracing, and reinforcement as required for rigid installation of track and door-operating equipment.
- C. Accessibility: Install sectional doors, switches, and controls along accessible routes in compliance with regulatory requirements for accessibility.
- D. Power-Operated Doors: Install automatic garage doors openers in accordance with UL 325.

3.3 STARTUP SERVICES

- A. Engage a factory-authorized service representative to perform startup service.
 - 1. Complete installation and startup checks in accordance with manufacturer's written instructions.
 - 2. Test and adjust controls and safety devices. Replace damaged and malfunctioning controls and equipment.

3.4 ADJUSTING

- A. Adjust hardware and moving parts to function smoothly so that doors operate easily, free of warp, twist, or distortion.
- B. Lubricate bearings and sliding parts as recommended by manufacturer.
- C. Adjust doors and seals to provide weather-resistant fit around entire perimeter.
- D. Touchup Painting Galvanized Material: Immediately after welding galvanized materials, clean welds and abraded galvanized surfaces and repair galvanizing to comply with ASTM A780/A780M.

END OF SECTION 08 36 13

**ARKANSAS DEPARTMENT OF TRANSPORTATION
JOB NO.42-12
EQUIPMENT AND PROCUREMENT SHOP AWNINGS
PROJECT MANUAL**

SECTION 08 71 00 - DOOR HARDWARE

PART 1 - GENERAL

1.1 SUMMARY

- A. Section Includes:
1. Hinges.
 2. Lock cylinders.
 3. Surface closers.
 4. Door gasketing.
 5. Thresholds.

1.2 COORDINATION

- A. Installation Templates: Distribute for doors, frames, and other work specified to be factory prepared. Check Shop Drawings of other work to confirm that adequate provisions are made for locating and installing door hardware to comply with indicated requirements.

1.3 ACTION SUBMITTALS

- A. Product Data: For each type of product.
1. Include construction details, material descriptions, dimensions of individual components and profiles, and finishes.

1.4 CLOSEOUT SUBMITTALS

- A. Maintenance Data: For each type of door hardware to include in maintenance manuals.
- B. Schedules: Final door hardware, and, keying schedule.

1.5 DELIVERY, STORAGE, AND HANDLING

- A. Inventory door hardware on receipt and provide secure lockup for door hardware delivered to Project site.
- B. Tag each item or package separately with identification coordinated with the final door hardware schedule, and include installation instructions, templates, and

**ARKANSAS DEPARTMENT OF TRANSPORTATION
JOB NO.42-12
EQUIPMENT AND PROCUREMENT SHOP AWNINGS
PROJECT MANUAL**

necessary fasteners with each item or package.

1.6 WARRANTY

- A. Special Warranty: Manufacturer agrees to repair or replace components of door hardware that fail in materials or workmanship within specified warranty period.
 - 1. Failures include, but are not limited to, the following:
 - a. Structural failures, including excessive deflection, cracking, or breakage.
 - b. Faulty operation of doors and door hardware.
 - c. Deterioration of metals, metal finishes, and other materials beyond normal weathering and use.
 - 2. Warranty Period: one year from date of Substantial Completion unless otherwise indicated below:

PART 2 - PRODUCTS

2.1 SOURCE LIMITATIONS

- A. Obtain each type of door hardware from single manufacturer.

2.2 HINGES

- A. Hinges: ANSI/BHMA A156.1. Provide template-produced hinges for hinges installed on hollow-metal doors and hollow-metal frames.
 - 1. Manufacturers: Subject to compliance with requirements, provide products by one of the following:
 - a. Allegion plc
 - b. Design Hardware; Mesker Openings Group; dormakaba
 - c. Hager Companies
 - d. McKinney Products Company; ASSA ABLOY Accessories and Door Controls Group, Inc.; ASSA ABLOY
 - e. STANLEY; dormakaba USA, Inc.

2.3 MECHANICAL LOCKS AND LATCHES

- A. Lock Functions: As indicated in door hardware schedule.
- B. Lock Throw: Comply with testing requirements for length of bolts required for

**ARKANSAS DEPARTMENT OF TRANSPORTATION
JOB NO.42-12
EQUIPMENT AND PROCUREMENT SHOP AWNINGS
PROJECT MANUAL**

labeled fire doors, and as follows:

1. Bored Locks: Minimum 1/2-inch latchbolt throw.
 2. Mortise Locks: Minimum 3/4-inch latchbolt throw.
- C. Lock Backset: 2-3/4 inches unless otherwise indicated.
- D. Lock Trim:
1. Levers: Cast.
- E. Strikes: Provide manufacturer's standard strike for each lock bolt or latchbolt complying with requirements indicated for applicable lock or latch and with strike box and curved lip extended to protect frame; finished to match lock or latch.

2.4 LOCK CYLINDERS

- A. Lock Cylinders: Tumbler type, constructed from brass or bronze, stainless steel, or nickel silver. Provide cylinder from same manufacturer of locking devices.
1. Manufacturers: Subject to compliance with requirements, provide products by one of the following:
 - a. Allegion plc
 - b. Arrow USA; an ASSA ABLOY Group company
 - c. ASSA, Inc.
 - d. Corbin Russwin, Inc.; an ASSA ABLOY Group company
 - e. SARGENT Manufacturing Company; ASSA ABLOY
 - f. Or approved equal
- B. Standard Lock Cylinders: ANSI/BHMA A156.5, Grade 1A permanent cores; face finished to match lockset.
1. Core Type: Interchangeable.
- C. Construction Cores: Provide construction cores that are replaceable by permanent cores. Provide 10 construction master keys.

2.5 KEYING

- A. Keying System: Factory registered, complying with guidelines in ANSI/BHMA A156.28, appendix. Provide one extra key blank for each lock.
1. Master Key System: Change keys and a master key operate cylinders.
 - a. Provide three cylinder change keys and five master keys.

**ARKANSAS DEPARTMENT OF TRANSPORTATION
JOB NO.42-12
EQUIPMENT AND PROCUREMENT SHOP AWNINGS
PROJECT MANUAL**

2. Existing System:
 - a. Master key or grand master key locks to Owner's existing system.
 - b. Re-key Owner's existing master key system into new keying system.
- B. Keys: Nickel silver.
 1. Stamping: Permanently inscribe each key with a visual key control number and include the following notation:
 - a. Notation: "DO NOT DUPLICATE."

2.6 SURFACE CLOSERS

- A. Surface Closers: ANSI/BHMA A156.4; rack-and-pinion hydraulic type with adjustable sweep and latch speeds controlled by key-operated valves and forged-steel main arm. Comply with manufacturer's written instructions for size of door closers depending on size of door, exposure to weather, and anticipated frequency of use. Provide factory-sized closers, adjustable to meet field conditions and requirements for opening force.
 1. Manufacturers: Subject to compliance with requirements, provide products by one of the following:
 - a. Allegion plc
 - b. Arrow USA; an ASSA ABLOY Group company
 - c. Corbin Russwin, Inc.; an ASSA ABLOY Group company
 - d. Hager Companies
 - e. SARGENT Manufacturing Company; ASSA ABLOY
 - f. STANLEY; dormakaba USA, Inc.
 - g. Yale Security Inc; ASSA ABLOY
 - h. Or approved equal

2.7 DOOR GASKETING

- A. Door Gasketing: ANSI/BHMA A156.22; with resilient or flexible seal strips that are easily replaceable and readily available from stocks maintained by manufacturer.
 1. Manufacturers: Subject to compliance with requirements, provide products by one of the following:
 - a. Hager Companies
 - b. National Guard Products, Inc
 - c. Pemko Manufacturing Company Inc.; ASSA ABLOY Accessories and Door Controls Group, Inc.; ASSA ABLOY
 - d. Zero International; Allegion plc

**ARKANSAS DEPARTMENT OF TRANSPORTATION
JOB NO.42-12
EQUIPMENT AND PROCUREMENT SHOP AWNINGS
PROJECT MANUAL**

- e. Or approved equal
- B. Maximum Air Leakage: When tested in accordance with ASTM E283/E283M with tested pressure differential of 0.3 inch wg, as follows:
 - 1. Gasketing on Single Doors: 0.3 cfm/sq. ft. of door opening.

2.8 THRESHOLDS

- A. Thresholds: ANSI/BHMA A156.21; fabricated to full width of opening indicated.
 - 1. Manufacturers: Subject to compliance with requirements, provide products by one of the following:
 - a. Hager Companies
 - b. National Guard Products, Inc
 - c. Pemko Manufacturing Company Inc.; ASSA ABLOY Accessories and Door Controls Group, Inc.; ASSA ABLOY
 - d. Rixson Specialty Door Controls; ASSA ABLOY
 - e. Zero International; Allegion plc
 - f. Or approved equal

2.9 FABRICATION

- A. Base Metals: Produce door hardware units of base metal indicated, fabricated by forming method indicated, using manufacturer's standard metal alloy, composition, temper, and hardness. Furnish metals of a quality equal to or greater than that of specified door hardware units and ANSI/BHMA A156.18.
- B. Fasteners: Provide door hardware manufactured to comply with published templates prepared for machine, wood, and sheet metal screws. Provide screws that comply with commercially recognized industry standards for application intended; however, aluminum fasteners are not permitted. Provide Phillips flat-head screws with finished heads to match surface of door hardware unless otherwise indicated.
 - 1. Fire-Rated Applications:
 - a. Wood or Machine Screws: For the following:
 - 1) Hinges mortised to doors or frames.
 - 2) Strike plates to frames.
 - 3) Closers to doors and frames.
 - b. Steel Through Bolts: For the following unless door blocking is provided:

**ARKANSAS DEPARTMENT OF TRANSPORTATION
JOB NO.42-12
EQUIPMENT AND PROCUREMENT SHOP AWNINGS
PROJECT MANUAL**

- 1) Surface hinges to doors.
 - 2) Closers to doors and frames.
 - 3) Surface-mounted exit devices.
2. Spacers or Sex Bolts: For through bolting of hollow-metal doors.
 3. Gasketing Fasteners: Provide noncorrosive fasteners for exterior applications and elsewhere as indicated.

2.10 FINISHES

- A. Provide finishes complying with ANSI/BHMA A156.18 as indicated in door hardware schedule.
- B. Protect mechanical finishes on exposed surfaces from damage by applying a strippable, temporary protective covering before shipping.
- C. Appearance of Finished Work: Variations in appearance of abutting or adjacent pieces are acceptable if they are within one-half of the range of approved Samples. Noticeable variations in the same piece are not acceptable. Variations in appearance of other components are acceptable if they are within the range of approved Samples and are assembled or installed to minimize contrast.

PART 3 - EXECUTION

3.1 EXAMINATION

- A. Examine doors and frames, with Installer present, for compliance with requirements for installation tolerances, labeled fire-rated door assembly construction, wall and floor construction, and other conditions affecting performance of the Work.
- B. Proceed with installation only after unsatisfactory conditions have been corrected.

3.2 INSTALLATION OF DOOR HARDWARE

- A. Mounting Heights: Mount door hardware units at heights to comply with the following unless otherwise indicated or required to comply with governing regulations.
 1. Standard Steel Doors and Frames: ANSI/SDI A250.8.
 2. Custom Steel Doors and Frames: HMMA 831.
- B. Install each door hardware item to comply with manufacturer's written instructions. Where cutting and fitting are required to install door hardware onto

**ARKANSAS DEPARTMENT OF TRANSPORTATION
JOB NO.42-12
EQUIPMENT AND PROCUREMENT SHOP AWNINGS
PROJECT MANUAL**

or into surfaces that are later to be painted or finished in another way, coordinate removal, storage, and reinstallation of surface protective trim units with finishing work. Do not install surface-mounted items until finishes have been completed on substrates involved.

1. Set units level, plumb, and true to line and location. Adjust and reinforce attachment substrates as necessary for proper installation and operation.
 2. Drill and countersink units that are not factory prepared for anchorage fasteners. Space fasteners and anchors in accordance with industry standards.
- C. Hinges: Install types and in quantities indicated in door hardware schedule, but not fewer than the number recommended by manufacturer for application indicated or one hinge for every 30 inches of door height, whichever is more stringent, unless other equivalent means of support for door, such as spring hinges or pivots, are provided.
- D. Thresholds: Set thresholds for exterior doors and other doors indicated in full bed of sealant.
- E. Perimeter Gasketing: Apply to head and jamb, forming seal between door and frame.
1. Do not notch perimeter gasketing to install other surface-applied hardware.
- F. Door Bottoms: Apply to bottom of door, forming seal with threshold when door is closed.

3.3 ADJUSTING

- A. Initial Adjustment: Adjust and check each operating item of door hardware and each door to ensure proper operation or function of every unit. Replace units that cannot be adjusted to operate as intended. Adjust door control devices to compensate for final operation of heating and ventilating equipment and to comply with referenced accessibility requirements.
1. Door Closers: Adjust sweep period to comply with accessibility requirements and requirements of authorities having jurisdiction.

3.4 CLEANING AND PROTECTION

- A. Clean adjacent surfaces soiled by door hardware installation.
- B. Clean operating items as necessary to restore proper function and finish.
- C. Provide final protection and maintain conditions that ensure that door hardware is without damage or deterioration at time of Substantial Completion.

**ARKANSAS DEPARTMENT OF TRANSPORTATION
JOB NO.42-12
EQUIPMENT AND PROCUREMENT SHOP AWNINGS
PROJECT MANUAL**

3.5 DOOR HARDWARE SCHEDULE

A. Hardware Set 1: Each door to have the following:

1. 3 Hinges.
2. Entry Lock
3. Closer
4. Gaskets
5. Threshold

END OF SECTION 08 71 00

**ARKANSAS DEPARTMENT OF TRANSPORTATION
JOB NO.42-12
EQUIPMENT AND PROCUREMENT SHOP AWNINGS
PROJECT MANUAL**

SECTION 13 34 19 - METAL BUILDING SYSTEMS

PART 1 - GENERAL

1.1 SUMMARY

- A. Section Includes:
 - 1. Structural-steel framing.
 - 2. Metal roof panels.
 - 3. Metal soffit panels.
 - 4. Thermal insulation.
 - 5. Accessories.

- B. Related Requirements:
 - 1. Section 077253 "Snow Guards" for prefabricated devices designed to hold snow on the roof surface.

1.2 COORDINATION

- A. Coordinate sizes and locations of concrete foundations and casting of anchor-rod inserts into foundation walls and footings. Anchor rod installation, concrete, reinforcement, and formwork requirements are specified in Section 033000 "Cast-in-Place Concrete."

- B. Coordinate metal panel assemblies with rain drainage work, flashing, trim, and construction of supports and other adjoining work to provide a leakproof, secure, and noncorrosive installation.

1.3 ACTION SUBMITTALS

- A. Product Data: For each type of metal building system component.
 - 1. Include construction details, material descriptions, dimensions of individual components and profiles, and finishes for the following:
 - a. Metal roof panels.
 - b. Thermal insulation and vapor-retarder facings.

- B. Shop Drawings: Indicate components by others. Include full building plan, elevations, sections, details and the following:
 - 1. Anchor-Rod Plans: Submit anchor-rod plans and templates before

**ARKANSAS DEPARTMENT OF TRANSPORTATION
JOB NO.42-12
EQUIPMENT AND PROCUREMENT SHOP AWNINGS
PROJECT MANUAL**

- foundation work begins. Include location, diameter, and minimum required projection of anchor rods required to attach metal building to foundation. Indicate column reactions at each location.
2. Structural-Framing Drawings: Show complete fabrication of primary and secondary framing; include provisions for openings. Indicate welds and bolted connections, distinguishing between shop and field applications. Include transverse cross-sections.
 3. Metal Roof Panel Layout Drawings: Show layouts of panels including methods of support. Include details of edge conditions, joints, panel profiles, corners, anchorages, clip spacing, trim, flashings, closures, and special details. Distinguish between factory- and field-assembled work; show locations of exposed fasteners.
 4. Accessory Drawings: Include details of the following items, at a scale of not less than 1-1/2 inches per 12 inches:
 - a. Flashing and trim.
 - b. Gutters.
 - c. Downspouts.
- C. Samples for Initial Selection: For units with factory-applied finishes.
- D. Delegated Design Submittals: For metal building systems.
1. Include analysis data indicating compliance with performance requirements and design data signed and sealed by the qualified professional engineer responsible for their preparation.

1.4 CLOSEOUT SUBMITTALS

- A. Maintenance Data: For metal panel finishes to include in maintenance manuals.

1.5 QUALITY ASSURANCE

- A. Manufacturer Qualifications: A qualified manufacturer.
1. Accreditation: Manufacturer's facility accredited according to IAS AC472, "Accreditation Criteria for Inspection Programs for Manufacturers of Metal Building Systems."
 2. Engineering Responsibility: Preparation of comprehensive engineering analysis and Shop Drawings by a professional engineer who is legally qualified to practice in jurisdiction where Project is located.
- B. Erector Qualifications: An experienced erector who specializes in erecting and installing work similar in material, design, and extent to that indicated for this Project and who is acceptable to manufacturer.
- C. Welding Qualifications: Qualify procedures and personnel according to the

**ARKANSAS DEPARTMENT OF TRANSPORTATION
JOB NO.42-12
EQUIPMENT AND PROCUREMENT SHOP AWNINGS
PROJECT MANUAL**

following:

1. AWS D1.1/D1.1M, "Structural Welding Code - Steel."
2. AWS D1.3, "Structural Welding Code - Sheet Steel."

1.6 DELIVERY, STORAGE, AND HANDLING

- A. Deliver components, sheets, panels, and other manufactured items so as not to be damaged or deformed. Package metal panels for protection during transportation and handling.
- B. Unload, store, and erect metal panels in a manner to prevent bending, warping, twisting, and surface damage.
- C. Stack metal panels horizontally on platforms or pallets, covered with suitable weathertight and ventilated covering. Store metal panels to ensure dryness, with positive slope for drainage of water. Do not store metal panels in contact with other materials that might cause staining, denting, or other surface damage.

1.7 FIELD CONDITIONS

- A. Weather Limitations: Proceed with panel installation only when weather conditions permit metal panels to be installed according to manufacturers' written instructions and warranty requirements.

1.8 WARRANTY

- A. Special Warranty on Metal Panel Finishes: Manufacturer agrees to repair finish or replace metal panels that show evidence of deterioration of factory-applied finishes within specified warranty period.
 1. Exposed Panel Finish: Deterioration includes, but is not limited to, the following:
 - a. Color fading more than 5 Hunter units when tested according to ASTM D2244.
 - b. Chalking in excess of a No. 8 rating when tested according to ASTM D4214.
 - c. Cracking, checking, peeling, or failure of paint to adhere to bare metal.
 2. Finish Warranty Period: 20 years from date of Substantial Completion.
- B. Special Weathertightness Warranty for Standing-Seam Metal Roof Panels: Manufacturer agrees to repair or replace standing-seam metal roof panel assemblies that leak or otherwise fail to remain weathertight within specified

**ARKANSAS DEPARTMENT OF TRANSPORTATION
JOB NO.42-12
EQUIPMENT AND PROCUREMENT SHOP AWNINGS
PROJECT MANUAL**

warranty period.

1. Warranty Period: 20 years from date of Substantial Completion.

PART 2 - PRODUCTS

2.1 METAL BUILDING SYSTEMS

- A. Manufacturers: Subject to compliance with requirements, provide products by one of the following:
 1. ACI Building Systems, Inc.
 2. Alliance Steel, Inc
 3. American Buildings Company; a Nucor company
 4. Bigbee Steel Buildings, Inc.
 5. Butler Manufacturing Company; a division of BlueScope Buildings North America, Inc.
 6. CBC Steel Buildings; a Nucor company
 7. Ceco Building Systems; part of the Cornerstone Building Brands
 8. Mueller, Inc.
 9. Nucor Building Systems; a Nucor company
 10. Pinnacle Structures, Inc.
 11. Reed's Metals
 12. SBI Metal Buildings
 13. Varco-Pruden Buildings; a division of BlueScope Buildings North America, Inc.
 14. Vulcan Steel Structures, Inc.
 15. Or approved equal

2.2 SYSTEM DESCRIPTION

- A. Provide a complete, integrated set of mutually dependent components and assemblies that form a metal building system capable of withstanding structural and other loads, thermally induced movement, and exposure to weather without failure or infiltration of water into building interior.
- B. Primary-Frame Type:
 1. Rigid Clear Span: Solid-member, structural-framing system without interior columns.
- C. End-Wall Framing:
 1. Manufacturer's standard, for buildings not required to be expandable, consisting of primary frame, capable of supporting one-half of a bay design load, and end-wall columns.

**ARKANSAS DEPARTMENT OF TRANSPORTATION
JOB NO.42-12
EQUIPMENT AND PROCUREMENT SHOP AWNINGS
PROJECT MANUAL**

- D. Secondary-Frame Type: Manufacturer's standard purlins and joists and exterior-framed (bypass) girts.
- E. Eave Height: As Indicated on Drawings.
- F. Bay Spacing: As indicated on Drawings.
- G. Roof Slope: As indicated on Drawings.
- H. Roof System: Manufacturer's standard standing-seam, trapezoidal-rib, metal roof panels.
 - 1. Liner Panels: Tapered rib.

2.3 PERFORMANCE REQUIREMENTS

- A. Delegated Design: Engage a qualified professional engineer, as defined in Section 014000 "Quality Requirements," to design metal building system.
- B. Structural Performance: Metal building systems to withstand the effects of gravity loads and the following loads and stresses within limits and under conditions indicated according to procedures in MBMA's "Metal Building Systems Manual."
 - 1. Deflection and Drift Limits:
 - a. Design metal building system assemblies to withstand serviceability design loads without exceeding deflections and drift limits recommended in AISC Steel Design Guide No. 3 "Serviceability Design Considerations for Steel Buildings."
- C. Seismic Performance: Metal building system to withstand the effects of earthquake motions determined according to ASCE/SEI 7.
- D. Thermal Movements: Allow for thermal movements from ambient and surface temperature changes by preventing buckling, opening of joints, overstressing of components, failure of joint sealants, failure of connections, and other detrimental effects. Base calculations on surface temperatures of materials due to both solar heat gain and nighttime-sky heat loss.
 - 1. Temperature Change: 120 deg F, ambient; 180 deg F, material surfaces.
- E. Structural Performance for Metal Roof Panels: Provide metal panel systems capable of withstanding the effects of the following loads, based on testing according to ASTM E1592:
- F. Air Infiltration for Metal Roof Panels: Air leakage of not more than 0.06 cfm/sq. ft. when tested according to ASTM E1680 at the following test-pressure difference:

**ARKANSAS DEPARTMENT OF TRANSPORTATION
JOB NO.42-12
EQUIPMENT AND PROCUREMENT SHOP AWNINGS
PROJECT MANUAL**

1. Test-Pressure Difference: 1.57 lbf/sq. ft..
- G. Water Penetration for Metal Roof Panels: No water penetration when tested according to ASTM E1646 at the following test-pressure difference:
 1. Test-Pressure Difference: 2.86 lbf/sq. ft..
- H. Wind-Uplift Resistance: Provide metal roof panel assemblies that comply with UL 580 for wind-uplift-resistance class indicated.
 1. Uplift Rating: UL 90.

2.4 STRUCTURAL-STEEL FRAMING

- A. Structural Steel: Comply with AISC 360, "Specification for Structural Steel Buildings."
- B. Bolted Connections: Comply with RCSC's "Specification for Structural Joints Using High-Strength Bolts."
- C. Cold-Formed Steel: Comply with AISI's "North American Specification for the Design of Cold-Formed Steel Structural Members" for design requirements and allowable stresses.
- D. Primary Framing: Manufacturer's standard primary-framing system, designed to withstand required loads and specified requirements. Primary framing includes transverse and lean-to frames; rafters, rake, and canopy beams; sidewall, intermediate, end-wall, and corner columns; and wind bracing.
 1. Rigid Clear-Span Frames: I-shaped frame sections fabricated from shop-welded, built-up steel plates or structural-steel shapes. Interior columns are not permitted.
 2. Frame Configuration: One-directional, sloped.
 3. Exterior Column: Uniform depth.
 4. Rafter: Uniform depth.
- E. Secondary Framing: Manufacturer's standard secondary framing, including purlins, girts, eave struts, flange bracing, base members, gable angles, clips, headers, jambs, and other miscellaneous structural members. Unless otherwise indicated, fabricate framing from either cold-formed, structural-steel sheet or roll-formed, metallic-coated steel sheet, prepainted with coil coating, to comply with the following:
 1. Purlins:
 - a. C- or Z-shaped sections; fabricated from built-up steel plates, steel sheet, or structural-steel shapes; minimum 2-1/2-inch- wide flanges.

**ARKANSAS DEPARTMENT OF TRANSPORTATION
JOB NO.42-12
EQUIPMENT AND PROCUREMENT SHOP AWNINGS
PROJECT MANUAL**

2. Eave Struts: Unequal-flange, C-shaped sections; fabricated from built-up steel plates, steel sheet, or structural-steel shapes; to provide adequate backup for metal panels.
 3. Flange Bracing: Minimum 2-by-2-by-1/8-inch structural-steel angles or 1-inch-diameter, cold-formed structural tubing to stiffen primary-frame flanges.
 4. Sag Bracing: Minimum 1-by-1-by-1/8-inch structural-steel angles.
 5. Purlin and Girt Clips: Manufacturer's standard clips fabricated from steel sheet. Provide galvanized clips where clips are connected to galvanized framing members.
 6. Framing for Openings: Channel shapes; fabricated from cold-formed, structural-steel sheet or structural-steel shapes. Frame head and jamb of door openings and head, jamb, and sill of other openings.
 7. Miscellaneous Structural Members: Manufacturer's standard sections fabricated from cold-formed, structural-steel sheet; built-up steel plates; or zinc-coated (galvanized) steel sheet; designed to withstand required loads.
- F. Bracing: Provide adjustable wind bracing as follows:
1. Rigid Portal Frames: Fabricated from shop-welded, built-up steel plates or structural-steel shapes to match primary framing; of size required to withstand design loads.
- G. Anchor Rods: Headed anchor rods as indicated in Anchor Rod Plan for attachment of metal building to foundation.
- H. Materials:
1. W-Shapes: ASTM A992/A992M; ASTM A572/A572M, Grade 50 or 55; or ASTM A529/A529M, Grade 50 or 55.
 2. Channels, Angles, M-Shapes, and S-Shapes: ASTM A36/A36M; ASTM A572/A572M, Grade 50 or 55; or ASTM A529/A529M, Grade 50 or 55.
 3. Plate and Bar: ASTM A36/A36M; ASTM A572/A572M, Grade 50 or 55; or ASTM A529/A529M, Grade 50 or 55.
 4. Non-High-Strength Bolts, Nuts, and Washers: ASTM A307, Grade A, carbon-steel, hex-head bolts; ASTM A563 carbon-steel hex nuts; and ASTM F844 plain (flat) steel washers.
 - a. Finish: Hot-dip zinc coating, ASTM F2329, Class C.
 5. High-Strength Bolts, Nuts, and Washers, Grade A325: ASTM F3125/F3125M, Type 1, heavy-hex steel structural bolts; ASTM A563, Grade DH, heavy-hex carbon-steel nuts; and ASTM F436/F436M, Type 1, hardened carbon-steel washers.
 - a. Finish: Hot-dip zinc coating, ASTM F2329, Class C.
 6. Unheaded Anchor Rods: ASTM A307, Grade A.

**ARKANSAS DEPARTMENT OF TRANSPORTATION
JOB NO.42-12
EQUIPMENT AND PROCUREMENT SHOP AWNINGS
PROJECT MANUAL**

- a. Configuration: Straight.
 - b. Nuts: ASTM A563 [heavy-]hex carbon steel.
 - c. Plate Washers: ASTM A36/A36M carbon steel.
 - d. Washers: ASTM F436 hardened carbon steel.
 - e. Finish: Hot-dip zinc coating, ASTM F2329, Class C.
- I. Finish: Factory primed. Apply specified primer immediately after cleaning and pretreating.
1. Clean and prepare in accordance with SSPC-SP2.
 2. Coat with manufacturer's standard primer. Apply primer to primary and secondary framing to a minimum dry film thickness of 1 mil.
 - a. Prime secondary framing formed from uncoated steel sheet to a minimum dry film thickness of 0.5 mil on each side.

2.5 METAL ROOF PANELS

- A. Standing-Seam, Trapezoidal-Rib, Metal Roof Panels: Formed with raised trapezoidal ribs at panel edges and intermediate stiffening ribs symmetrically spaced between ribs; designed for sequential installation by mechanically attaching panels to supports using concealed clips located under one side of panels and engaging opposite edge of adjacent panels.
1. Material: Zinc-coated (galvanized) or aluminum-zinc alloy-coated steel sheet, 0.024-inch nominal uncoated steel thickness. Prepainted by the coil-coating process to comply with ASTM A755/A755M.
 - a. Exterior Finish: Three-coat fluoropolymer.
 - b. Color: As selected by Owner from manufacturer's full range.
 2. Clips: Two-piece floating to accommodate thermal movement.
 3. Joint Type: Mechanically seamed.
 4. Panel Coverage: 24 inches.
 5. Panel Height: 1-1/2 inches.
 6. Uplift Rating: UL 90.
- B. Exposed-Fastener, Tapered-Rib, Metal Liner Panels: Formed with raised, trapezoidal major ribs and flat pan between major ribs; designed to be installed by lapping side edges of adjacent panels and mechanically attaching panels to supports using exposed fasteners in side laps.
1. Material: Zinc-coated (galvanized) or aluminum-zinc alloy-coated steel sheet, 0.024-inch nominal uncoated steel thickness. Prepainted by the coil-coating process to comply with ASTM A755/A755M.
 - a. Exterior Finish: Three-coat fluoropolymer.
 - b. Color: White.

**ARKANSAS DEPARTMENT OF TRANSPORTATION
JOB NO.42-12
EQUIPMENT AND PROCUREMENT SHOP AWNINGS
PROJECT MANUAL**

2. Major-Rib Spacing: 12 inches o.c.
3. Panel Coverage: 36 inches.
4. Panel Height: 1.5 inches.

C. Finishes:

1. Exposed Coil-Coated Finish:
 - a. Three-Coat Fluoropolymer: AAMA 621. Fluoropolymer finish containing not less than 70 percent PVDF resin by weight in both color coat and clear topcoat. Prepare, pretreat, and apply coating to exposed metal surfaces to comply with coating and resin manufacturers' written instructions.
2. Concealed Finish: Apply pretreatment and manufacturer's standard white or light-colored acrylic or polyester backer finish, consisting of prime coat and wash coat with a minimum total dry film thickness of 0.5 mil.

2.6 THERMAL INSULATION

A. Thermal Insulation for Metal Buildings:

1. Manufacturers: Subject to compliance with requirements, provide products by the following, available manufacturers offering products that may be incorporated into the Work include, but are not limited to, the following:
 - a. Bay Insulation Systems; a division of Bay Industries
- B. Faced Metal Building Insulation: ASTM C991, Type II, glass-fiber-blanket insulation; 0.5-lb/cu. ft. density; 2-inch- wide, continuous, vapor-tight edge tabs; with a flame-spread index of 25 or less.
- C. Vapor-Retarder Tape: Pressure-sensitive tape of type recommended by vapor-retarder manufacturer for sealing joints and penetrations in vapor retarder.

2.7 ACCESSORIES

- A. General: Provide accessories as standard with metal building system manufacturer and as specified. Fabricate and finish accessories at the factory to greatest extent possible, by manufacturer's standard procedures and processes. Comply with indicated profiles and with dimensional and structural requirements.
 1. Form exposed sheet metal accessories that are without excessive oil-canning, buckling, and tool marks and that are true to line and levels indicated, with exposed edges folded back to form hems.
- B. Roof Panel Accessories: Provide components required for a complete metal roof

**ARKANSAS DEPARTMENT OF TRANSPORTATION
JOB NO.42-12
EQUIPMENT AND PROCUREMENT SHOP AWNINGS
PROJECT MANUAL**

panel assembly including copings, fasciae, corner units, ridge closures, clips, sealants, gaskets, fillers, closure strips, and similar items. Match material and finish of metal roof panels unless otherwise indicated.

1. Closures: Provide closures at eaves and ridges, fabricated of same material as metal roof panels.
 2. Clips: Manufacturer's standard, formed from stainless steel sheet, designed to withstand negative-load requirements.
 3. Cleats: Manufacturer's standard, mechanically seamed cleats formed from stainless steel sheet or nylon-coated aluminum sheet.
 4. Backing Plates: Provide metal backing plates at panel end splices, fabricated from material recommended by manufacturer.
 5. Closure Strips: Closed-cell, expanded, cellular, rubber or crosslinked, polyolefin-foam or closed-cell laminated polyethylene; minimum 1-inch-thick, flexible closure strips; cut or premolded to match metal roof panel profile. Provide closure strips where indicated or necessary to ensure weathertight construction.
 6. Thermal Spacer Blocks: Where metal panels attach directly to purlins, provide thermal spacer blocks of thickness required to provide 1-inch standoff; fabricated from extruded polystyrene.
- C. Flashing and Trim: Zinc-coated (galvanized) or aluminum-zinc alloy-coated steel sheet, 0.018-inch nominal uncoated steel thickness, prepainted with coil coating; finished to match adjacent metal panels.
1. Provide flashing and trim as required to seal against weather and to provide finished appearance. Locations include, but are not limited to, eaves, rakes, corners, bases, framed openings, ridges, fasciae, and fillers.
 2. Opening Trim: Zinc-coated (galvanized) or aluminum-zinc alloy-coated steel sheet, 0.030-inch nominal uncoated steel thickness, prepainted with coil coating. Trim head and jamb of door openings, and head, jamb, and sill of other openings.
- D. Gutters: Zinc-coated (galvanized) or aluminum-zinc alloy-coated steel sheet, 0.018-inch nominal uncoated steel thickness, prepainted with coil coating; finished to match roof fascia and rake trim. Match profile of gable trim, complete with end pieces, outlet tubes, and other special pieces as required. Fabricate in minimum 96-inch- long sections, sized according to SMACNA's "Architectural Sheet Metal Manual."
1. Gutter Supports: Fabricated from same material and finish as gutters.
 2. Strainers: Bronze, copper, or aluminum wire ball type at outlets.
- E. Downspouts: Zinc-coated (galvanized) or aluminum-zinc alloy-coated steel sheet, 0.018-inch nominal uncoated steel thickness, prepainted with coil coating; finished to match metal wall panels. Fabricate in minimum 10-foot- long sections, complete with formed elbows and offsets.

**ARKANSAS DEPARTMENT OF TRANSPORTATION
JOB NO.42-12
EQUIPMENT AND PROCUREMENT SHOP AWNINGS
PROJECT MANUAL**

1. Mounting Straps: Fabricated from same material and finish as gutters.

F. Materials:

1. Fasteners: Self-tapping screws, bolts, nuts, self-locking rivets and bolts, end-welded studs, and other suitable fasteners designed to withstand design loads. Provide fasteners with heads matching color of materials being fastened by means of plastic caps or factory-applied coating.
2. Fasteners for Metal Roof Panels:
 - a. Self-drilling, Type 410 stainless steel or self-tapping, Type 304 stainless steel or zinc-alloy-steel hex washer head, with EPDM washer under heads of fasteners bearing on weather side of metal panels.
3. Fasteners for Flashing and Trim: Blind fasteners or self-drilling screws with hex washer head.
4. Blind Fasteners: High-strength aluminum or stainless steel rivets.
5. Corrosion-Resistant Coating: Cold-applied asphalt mastic, compounded for **15-mil** dry film thickness per coat. Provide inert-type noncorrosive compound free of asbestos fibers, sulfur components, and other deleterious impurities.
6. Nonmetallic, Shrinkage-Resistant Grout: ASTM C1107/C1107M, factory-packaged, nonmetallic aggregate grout, noncorrosive, nonstaining, mixed with water to consistency suitable for application and a 30-minute working time.
7. Metal Panel Sealants:
 - a. Sealant Tape: Pressure-sensitive, 100 percent solids, gray polyisobutylene-compound sealant tape with release-paper backing. Provide permanently elastic, nonsag, nontoxic, nonstaining tape of manufacturer's standard size.
 - b. Joint Sealant: ASTM C920; one part elastomeric polyurethane or polysulfide; of type, grade, class, and use classifications required to seal joints in metal panels and remain weathertight; and as recommended by metal building system manufacturer.

2.8 FABRICATION

- A. General: Design components and field connections required for erection to permit easy assembly.
 1. Mark each piece and part of the assembly to correspond with previously prepared erection drawings, diagrams, and instruction manuals.
 2. Fabricate structural framing to produce clean, smooth cuts and bends. Punch holes of proper size, shape, and location. Members to be free of cracks, tears, and ruptures.

**ARKANSAS DEPARTMENT OF TRANSPORTATION
JOB NO.42-12
EQUIPMENT AND PROCUREMENT SHOP AWNINGS
PROJECT MANUAL**

- B. Tolerances: Comply with MBMA's "Metal Building Systems Manual" for fabrication and erection tolerances.

- C. Primary Framing: Shop fabricate framing components to indicated size and section, with baseplates, bearing plates, stiffeners, and other items required for erection welded into place. Cut, form, punch, drill, and weld framing for bolted field assembly.
 - 1. Make shop connections by welding or by using high-strength bolts.
 - 2. Join flanges to webs of built-up members by a continuous, submerged arc-welding process.
 - 3. Brace compression flange of primary framing with steel angles or cold-formed structural tubing between frame web and purlin web or girt web, so flange compressive strength is within allowable limits for any combination of loadings.
 - 4. Weld clips to frames for attaching secondary framing if applicable, or punch for bolts.
 - 5. Shop Priming: Prepare surfaces for shop priming according to SSPC-SP 2. Shop prime primary framing with specified primer after fabrication.

- D. Secondary Framing: Shop fabricate framing components to indicated size and section by roll forming or break forming, with baseplates, bearing plates, stiffeners, and other plates required for erection welded into place. Cut, form, punch, drill, and weld secondary framing for bolted field connections to primary framing.
 - 1. Make shop connections by welding or by using non-high-strength bolts.
 - 2. Shop Priming: Prepare uncoated surfaces for shop priming according to SSPC-SP 2. Shop prime uncoated secondary framing with specified primer after fabrication.

- E. Metal Panels: Fabricate and finish metal panels at the factory to greatest extent possible, by manufacturer's standard procedures and processes, as necessary to fulfill indicated performance requirements. Comply with indicated profiles and with dimensional and structural requirements.
 - 1. Provide panel profile, including major ribs and intermediate stiffening ribs, if any, for full length of metal panel.

PART 3 - EXECUTION

3.1 EXAMINATION

- A. Examine substrates, areas, and conditions, with erector present, for compliance with requirements for installation tolerances and other conditions affecting performance of the Work.

**ARKANSAS DEPARTMENT OF TRANSPORTATION
JOB NO.42-12
EQUIPMENT AND PROCUREMENT SHOP AWNINGS
PROJECT MANUAL**

- B. Before erection proceeds, survey elevations and locations of concrete- and masonry-bearing surfaces and locations of anchor rods, bearing plates, and other embedments to receive structural framing, with erector present, for compliance with requirements and metal building system manufacturer's tolerances.
 - 1. Engage land surveyor to perform surveying.
- C. Proceed with erection only after unsatisfactory conditions have been corrected.

3.2 PREPARATION

- A. Clean and prepare surfaces to be painted according to manufacturer's written instructions for each particular substrate condition.
- B. Provide temporary shores, guys, braces, and other supports during erection to keep structural framing secure, plumb, and in alignment against temporary construction loads and loads equal in intensity to design loads. Remove temporary supports when permanent structural framing, connections, and bracing are in place unless otherwise indicated.

3.3 ERECTION OF STRUCTURAL FRAMING

- A. Erect metal building system according to manufacturer's written instructions and drawings.
- B. Do not field cut, drill, or alter structural members without written approval from metal building system manufacturer's professional engineer.
- C. Set structural framing accurately in locations and to elevations indicated, according to AISC specifications referenced in this Section. Maintain structural stability of frame during erection.
- D. Base and Bearing Plates: Clean concrete- and masonry-bearing surfaces of bond-reducing materials, and roughen surfaces prior to setting plates. Clean bottom surface of plates.
 - 1. Set plates for structural members on wedges, shims, or setting nuts as required.
 - 2. Tighten anchor rods after supported members have been positioned and plumbed. Do not remove wedges or shims but, if protruding, cut off flush with edge of plate before packing with grout.
 - 3. Promptly pack grout solidly between bearing surfaces and plates so no voids remain. Neatly finish exposed surfaces; protect grout and allow to cure. Comply with manufacturer's written installation instructions for shrinkage-resistant grouts.

**ARKANSAS DEPARTMENT OF TRANSPORTATION
JOB NO.42-12
EQUIPMENT AND PROCUREMENT SHOP AWNINGS
PROJECT MANUAL**

- E. Align and adjust structural framing before permanently fastening. Before assembly, clean bearing surfaces and other surfaces that will be in permanent contact with framing. Perform necessary adjustments to compensate for discrepancies in elevations and alignment.
 - 1. Level and plumb individual members of structure.
- F. Primary Framing and End Walls: Erect framing level, plumb, rigid, secure, and true to line. Level baseplates to a true even plane with full bearing to supporting structures, set with double-nutted anchor bolts. Use grout to obtain uniform bearing and to maintain a level base-line elevation. Moist-cure grout for not less than seven days after placement.
 - 1. Make field connections using high-strength bolts installed according to RCSC's "Specification for Structural Joints Using High-Strength Bolts" for bolt type and joint type specified.
- G. Secondary Framing: Erect framing level, plumb, rigid, secure, and true to line. Field bolt secondary framing to clips attached to primary framing.
 - 1. Provide rake or gable purlins with tight-fitting closure channels and fasciae.
 - 2. Locate and space wall girts to suit openings such as doors and windows.
 - 3. Provide supplemental framing at entire perimeter of openings, including doors, windows, louvers, ventilators, and other penetrations of roof and walls.
- H. Bracing: Install bracing in roof and sidewalls where indicated on erection drawings.
 - 1. Tighten rod and cable bracing to avoid sag.
 - 2. Locate interior end-bay bracing only where indicated.
- I. Framing for Openings: Provide shapes of proper design and size to reinforce openings and to carry loads and vibrations imposed, including equipment furnished under mechanical and electrical work. Securely attach to structural framing.
- J. Erection Tolerances: Maintain erection tolerances of structural framing within AISC 303.

3.4 METAL PANEL INSTALLATION, GENERAL

- A. Fabricate and finish metal panels and accessories at the factory, by manufacturer's standard procedures and processes, as necessary to fulfill indicated performance requirements demonstrated by laboratory testing. Comply with indicated profiles and with dimensional and structural requirements.
- B. Examination: Examine primary and secondary framing to verify that structural-

**ARKANSAS DEPARTMENT OF TRANSPORTATION
JOB NO.42-12
EQUIPMENT AND PROCUREMENT SHOP AWNINGS
PROJECT MANUAL**

panel support members and anchorages have been installed within alignment tolerances required by manufacturer.

1. Examine roughing-in for components and systems penetrating metal panels, to verify actual locations of penetrations relative to seams before metal panel installation.
- C. General: Anchor metal panels and other components of the Work securely in place, with provisions for thermal and structural movement.
1. Field cut metal panels as required for doors, windows, and other openings. Cut openings as small as possible, neatly to size required, and without damage to adjacent metal panel finishes.
 - a. Field cutting of metal panels by torch is not permitted unless approved in writing by manufacturer.
 2. Install metal panels perpendicular to structural supports unless otherwise indicated.
 3. Flash and seal metal panels with weather closures at perimeter of openings and similar elements. Fasten with self-tapping screws.
 4. Locate and space fastenings in uniform vertical and horizontal alignment.
 5. Locate metal panel splices over structural supports with end laps in alignment.
 6. Lap metal flashing over metal panels to allow moisture to run over and off the material.
- D. Lap-Seam Metal Panels: Install screw fasteners using power tools with controlled torque adjusted to compress EPDM washers tightly without damage to washers, screw threads, or metal panels. Install screws in predrilled holes.
1. Arrange and nest side-lap joints so prevailing winds blow over, not into, lapped joints. Lap ribbed or fluted sheets one full rib corrugation. Apply metal panels and associated items for neat and weathertight enclosure. Avoid "panel creep" or application not true to line.
- E. Metal Protection: Where dissimilar metals contact each other or corrosive substrates, protect against galvanic action by painting contact surfaces with corrosion-resistant coating, by applying rubberized-asphalt underlayment to each contact surface, or by other permanent separation as recommended by metal roof panel manufacturer.
- F. Joint Sealers: Install gaskets, joint fillers, and sealants where indicated and where required for weatherproof performance of metal panel assemblies. Provide types of gaskets, fillers, and sealants indicated; or, if not indicated, provide types recommended by metal panel manufacturer.
1. Seal metal panel end laps with double beads of tape or sealant the full

**ARKANSAS DEPARTMENT OF TRANSPORTATION
JOB NO.42-12
EQUIPMENT AND PROCUREMENT SHOP AWNINGS
PROJECT MANUAL**

width of panel. Seal side joints where recommended by metal panel manufacturer.

3.5 METAL ROOF PANEL INSTALLATION

- A. General: Provide metal roof panels of full length from eave to ridge unless otherwise indicated or restricted by shipping limitations.
 - 1. Install ridge and hip caps as metal roof panel work proceeds.
 - 2. Flash and seal metal roof panels with weather closures at eaves and rakes. Fasten with self-tapping screws.

- B. Standing-Seam Metal Roof Panels: Fasten metal roof panels to supports with concealed clips at each standing-seam joint, at location and spacing and with fasteners recommended by manufacturer.
 - 1. Install clips to supports with self-drilling or self-tapping fasteners.
 - 2. Install pressure plates at locations indicated in manufacturer's written installation instructions.
 - 3. Seamed Joint: Crimp standing seams with manufacturer-approved motorized seamer tool so that clip, metal roof panel, and factory-applied sealant are completely engaged.
 - 4. Rigidly fasten eave end of metal roof panels and allow ridge end free movement for thermal expansion and contraction. Predrill panels for fasteners.
 - 5. Provide metal closures at peaks rake edges rake walls and each side of ridge[and hip caps.

- C. Metal Fascia Panels: Align bottom of metal panels and fasten with blind rivets, bolts, or self-drilling or self-tapping screws. Flash and seal metal panels with weather closures where fasciae meet soffits, along lower panel edges, and at perimeter of all openings.

- D. Metal Roof Panel Installation Tolerances: Shim and align metal roof panels within installed tolerance of 1/4 inch in 20 feet on slope and location lines and within 1/8-inch offset of adjoining faces and of alignment of matching profiles.

3.6 THERMAL INSULATION INSTALLATION

- A. Blanket Roof Insulation: Comply with the following installation method:
 - 1. Over-Framing Installation: Extend insulation and vapor retarder over and perpendicular to top flange of secondary framing. Hold in place by metal roof panels fastened to secondary framing.
 - 2. Over-Purlin-with-Spacer-Block Installation: Extend insulation and vapor retarder over and perpendicular to top flange of secondary framing. Install layer of filler insulation over first layer to fill space formed by metal roof

**ARKANSAS DEPARTMENT OF TRANSPORTATION
JOB NO.42-12
EQUIPMENT AND PROCUREMENT SHOP AWNINGS
PROJECT MANUAL**

panel standoffs. Hold in place by panels fastened to standoffs.

- a. Thermal Spacer Blocks: Where metal roof panels attach directly to purlins, install thermal spacer blocks.
3. Retainer Strips: Install retainer strips at each longitudinal insulation joint, straight and taut, nesting with secondary framing to hold insulation in place.

3.7 ACCESSORY INSTALLATION

- A. General: Install accessories with positive anchorage to building and weathertight mounting, and provide for thermal expansion. Coordinate installation with flashings and other components.
 1. Install components required for a complete metal roof panel assembly, including trim, copings, ridge closures, seam covers, flashings, sealants, gaskets, fillers, closure strips, and similar items.
 2. Install components for a complete metal wall panel assembly, including trim, copings, corners, seam covers, flashings, sealants, gaskets, fillers, closure strips, and similar items.
 3. Where dissimilar metals contact each other or corrosive substrates, protect against galvanic action by painting contact surfaces with corrosion-resistant coating, by applying rubberized-asphalt underlayment to each contact surface, or by other permanent separation as recommended by manufacturer.
- B. Flashing and Trim: Comply with performance requirements, manufacturer's written installation instructions, and SMACNA's "Architectural Sheet Metal Manual." Provide concealed fasteners where possible, and set units true to line and level. Install work with laps, joints, and seams that will be permanently watertight and weather resistant.
 1. Install exposed flashing and trim that is without excessive oil-canning, buckling, and tool marks and that is true to line and levels indicated, with exposed edges folded back to form hems. Install sheet metal flashing and trim to fit substrates and to result in waterproof and weather-resistant performance.
 2. Expansion Provisions: Provide for thermal expansion of exposed flashing and trim. Space movement joints at a maximum of 10 feet with no joints allowed within 24 inches of corner or intersection. Where lapped or bayonet-type expansion provisions cannot be used or would not be sufficiently weather resistant and waterproof, form expansion joints of intermeshing hooked flanges, not less than 1 inch deep, filled with mastic sealant (concealed within joints).
- C. Gutters: Join sections with riveted-and-soldered or lapped-and-sealed joints. Attach gutters to eave with gutter hangers spaced as required for gutter size, but

**ARKANSAS DEPARTMENT OF TRANSPORTATION
JOB NO.42-12
EQUIPMENT AND PROCUREMENT SHOP AWNINGS
PROJECT MANUAL**

not more than 36 inches o.c. using manufacturer's standard fasteners. Provide end closures and seal watertight with sealant. Provide for thermal expansion.

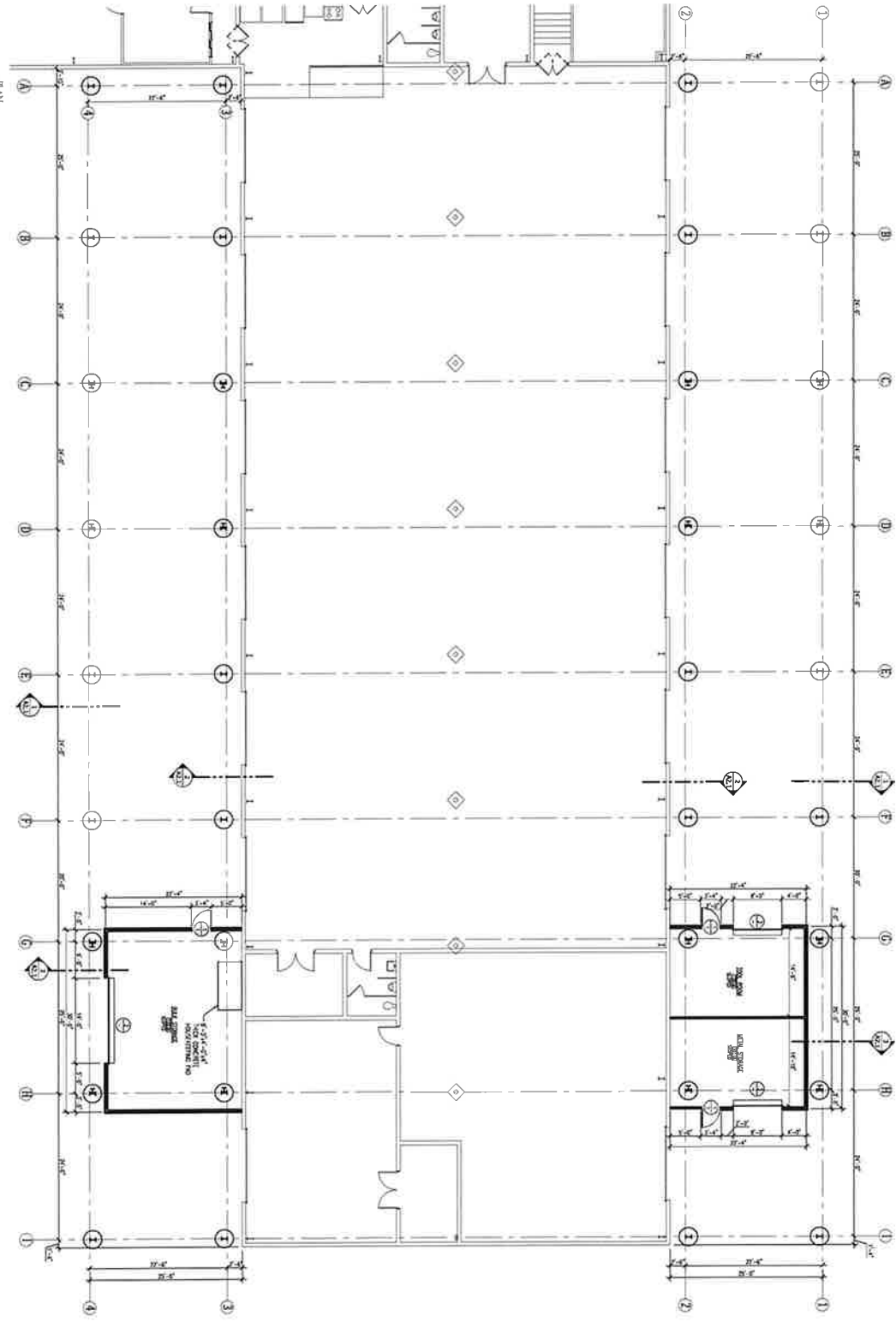
- D. Downspouts: Join sections with 1-1/2-inch telescoping joints. Provide fasteners designed to hold downspouts securely 1 inch away from walls; locate fasteners at top and bottom and at approximately 60 inches o.c. in between.
 - 1. Provide elbows at base of downspouts to direct water away from building.

3.8 CLEANING AND PROTECTION

- A. Repair damaged galvanized coatings on galvanized items with galvanized repair paint according to ASTM A780/A780M and manufacturer's written instructions.
- B. Touchup Painting:
 - 1. After erection, promptly clean, prepare, and prime or reprime field connections, rust spots, and abraded surfaces of prime-painted structural framing, bearing plates, and accessories.
 - a. Clean and prepare surfaces by SSPC-SP 2, "Hand Tool Cleaning," or by SSPC-SP 3, "Power Tool Cleaning."
 - b. Apply a compatible primer of same type as shop primer used on adjacent surfaces.
- C. Metal Panels: Remove temporary protective coverings and strippable films, if any, as metal panels are installed. On completion of metal panel installation, clean finished surfaces as recommended by metal panel manufacturer. Maintain in a clean condition during construction.
 - 1. Replace metal panels that have been damaged or have deteriorated beyond successful repair by finish touchup or similar minor repair procedures.

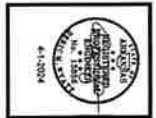
END OF SECTION 13 34 19

NORTH
 NORTH
 FLOOR PLAN
 SCALE 1/8" = 1'-0"



A1.1
 2 OF 3

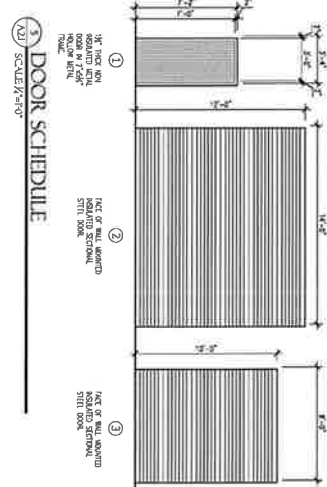
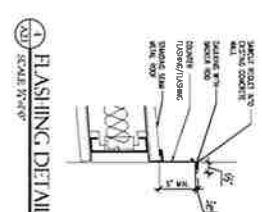
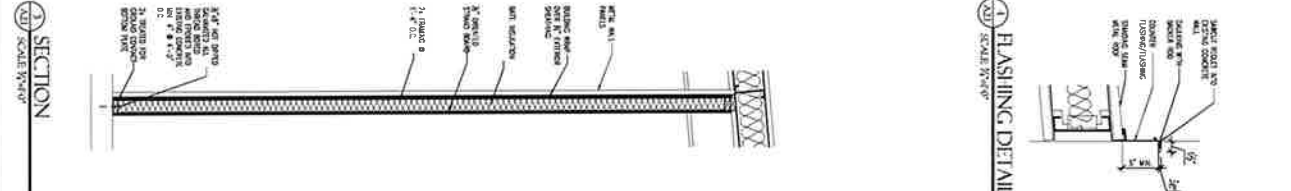
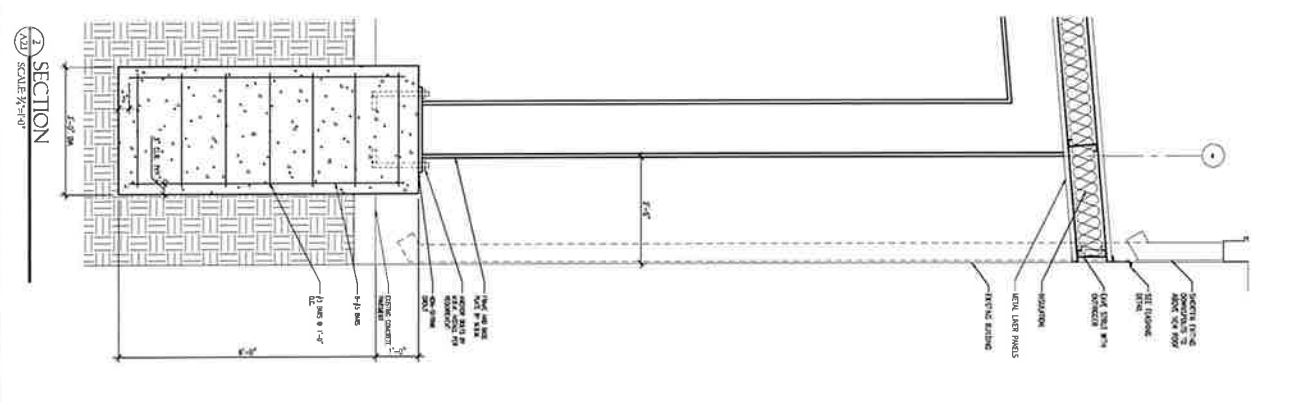
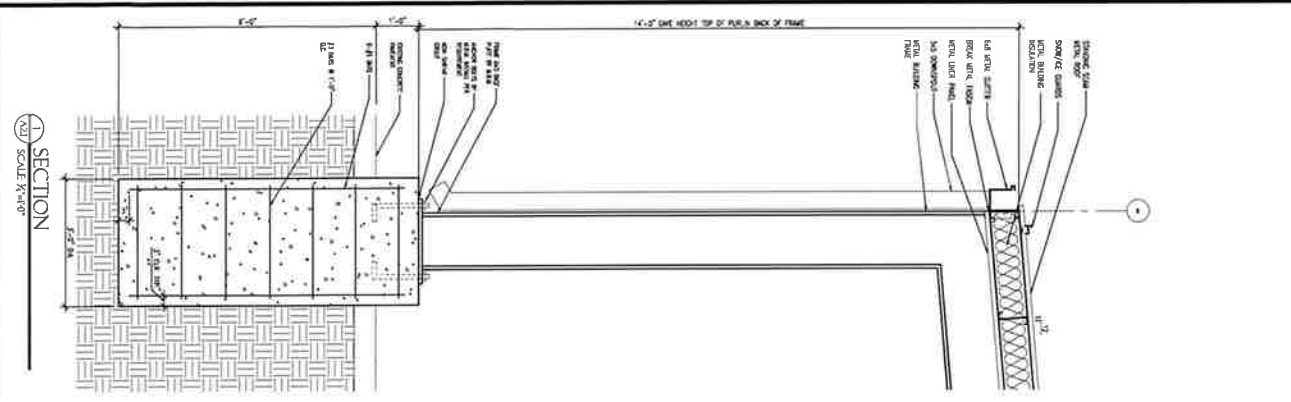
DATE: MARCH 26, 2024
 DRAWN BY: E
 REVISIONS:



**EQUIPMENT AND PROCUREMENT
 SHOP AWNINGS**
 Little Rock, Arkansas
 Pulaski County

FLOOR PLANS





ROOM FINISH SCHEDULE

MATERIAL	ROOM RESISTANCE							COMMENTS
	A	B	C	D	E	F		
CEILING								
FLOOR								
BASE								
WALLS								

