

NOTES:

EACH ITEM "TRAFFIC SIGNAL HEAD (4 SEC., 1-WAY)" SHALL INCLUDE A SIGN (RIO-12a) AS SHOWN, ATTACHED TO THE MAST ARM OR SPAN ASSEMBLY 12" TO THE RIGHT OF THE SIGNAL HEAD UNLESS REMOVED WITHIN SIGNAL PLAN NOTES.

EACH ITEM "TRAFFIC SIGNAL HEAD (3 SEC., 1-WAY)", TO BE USED AS A LEFT TURN INDICATION ONLY SHALL INCLUDE A SIGN (RIO-10) AS SHOWN, ATTACHED TO THE MAST ARM OR SPAN ASSEMBLY 12" TO THE RIGHT OF THE SIGNAL HEAD.

ALL SIGN BLANK SHALL BE CONSTRUCTED OF ALUMINUM  
ALLOY (ASTM DESIGNATION B-209, ALLOY 5052-H38)  
WITH A THICKNESS OF 0.100 INCH.

ALL SIGN FACES SHALL BE CONSTRUCTED OF HIGH INTENSITY SHEETING (TYPE III) WITH SILKSCREEN LEGEND AND BORDER.

TETHER STRAND SHALL BE EITHER  $\frac{5}{32}$  " OR  $\frac{3}{16}$  "  
HIGH FATIGUE STAINLESS STEEL AIRCRAFT  
CABLE IN 7/19 CONFIGURATION, MIL-W-83420  
CERTIFIED, WITH A MINIMUM STRENGTH OF 2400 LB.

SIGNAL OPERATION NOTES:

FLASHING OPERATION - PRIOR TO NORMAL OPERATION, SIGNAL SHALL BE FLASHED FOR A PERIOD OF 3 TO 5 WORK DAYS. SIGNAL SHALL BE PLACED IN OPERATION ONLY ON A REGULAR WORK DAY, EXCEPT FRIDAY.

THE CONTRACTOR MAY BE REQUIRED TO ALTER THE FLASHING DISPLAY DURING THE TEMPORARY FLASH PERIOD. AT THE TIME THE INTERSECTION IS PLACED IN PERMANENT OPERATION, THE FLASH SEQUENCE SHALL THEN BE RETURNED TO THAT INDICATED ON THE PLAN SHEETS. NO ADDITIONAL COMPENSATION SHALL BE ALLOWED FOR THESE ALTERATIONS IN FLASH SEQUENCE.

FOUNDATION NOTES:

ALL REINFORCING STEEL SHALL BE GRADE 40 MINIMUM.

SPAN WIRE POLES WITH A 9" OR 10" POLE BASE SHALL USE FOUNDATIONS THAT ARE 30" IN DIAMETER AND 9'-0" IN DEPTH. VERTICAL REINFORCING STEEL SHALL BE 12-#7 @ 102". HORIZONTAL REINFORCING STEEL SHALL BE 13-#4 @ 8.333' O.C.

SPAN WIRE POLES WITH AN 11", 12", OR 13" POLE BASE SHALL USE FOUNDATIONS THAT ARE 30" IN DIAMETER AND 12'-0" IN DEPTH. VERTICAL REINFORCING STEEL SHALL BE 12-#7 @ 138". HORIZONTAL REINFORCING STEEL SHALL BE 17-#4 @ 8.5" O.C.

ALL PED POLES SHALL USE FOUNDATIONS THAT ARE 30" IN DIAMETER AND 7'-0" IN DEPTH. VERTICAL REINFORCING STEEL SHALL BE 12-#7 @ 78". HORIZONTAL REINFORCING STEEL SHALL BE 10-#4 @ 8.44" O.C.

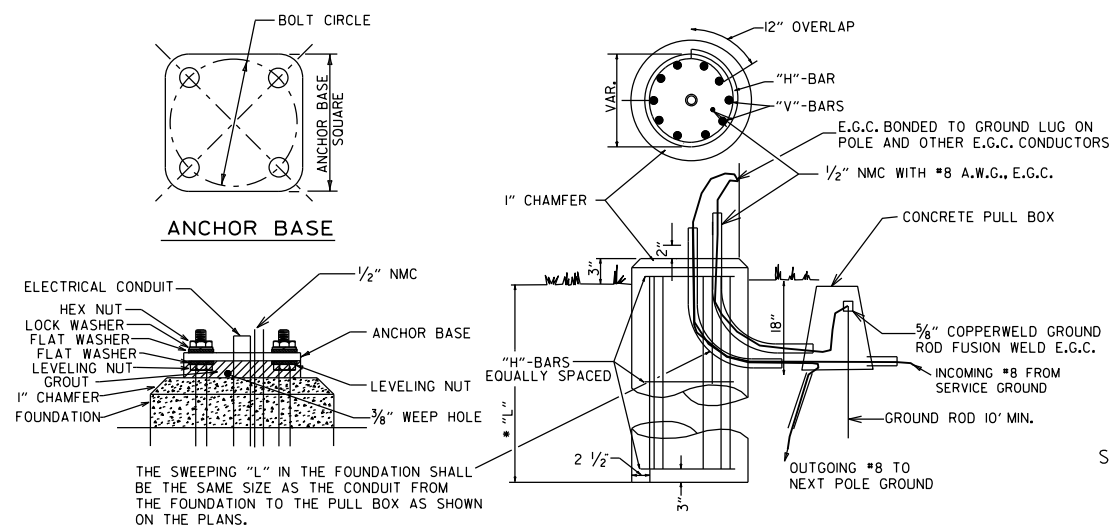
MINIMUM STRUCTURAL REQUIREMENTS:

DESIGN SPECIFICATIONS: AASHTO STANDARD SPECIFICATIONS FOR STRUCTURAL SUPPORTS FOR HIGHWAY SIGNS, LUMINAIRES AND TRAFFIC SIGNALS, 4TH EDITION (2001) WITH 2003 AND 2006 INTERIMS.

USE FATIGUE CATEGORY II.  
CONSTRUCTION SPECIFICATIONS: STANDARD SPECIFICATIONS FOR  
HIGHWAY CONSTRUCTION (CURRENT EDITION) WITH APPLICABLE  
SUPPLEMENTAL SPECIFICATIONS AND SPECIAL PROVISIONS.

BASE WIND SPEED: 90 MPH

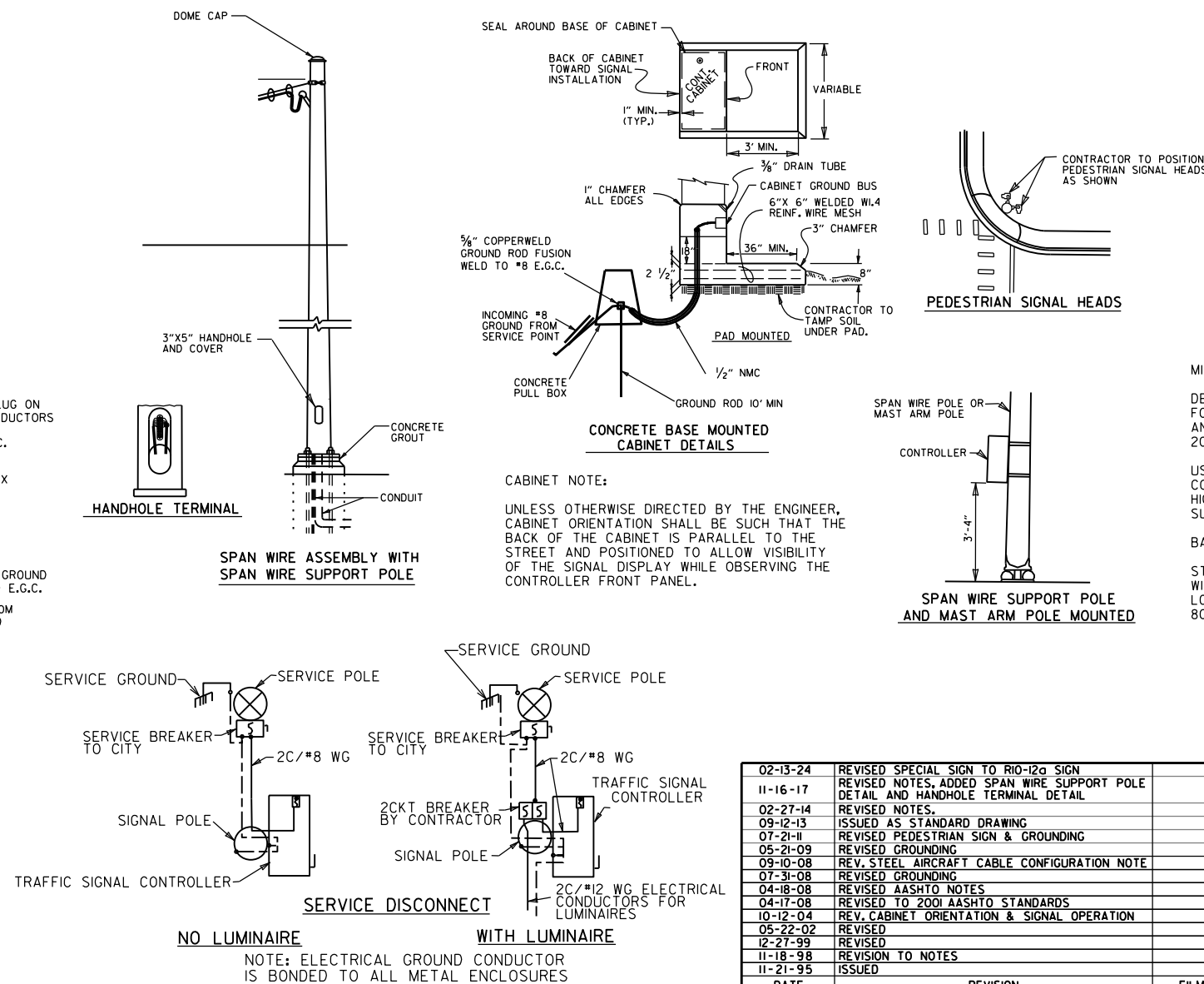
STEEL MEMBERS CONSIDERED MAIN LOAD CARRYING MEMBERS WITH THICKNESS GREATER THAN  $\frac{1}{2}$ " SHALL MEET THE LONGITUDINAL CHARPY V-NOTCH TEST SPECIFIED IN SUBSECTION 807.05 OF THE STANDARD SPECIFICATIONS.



GROUND ROD - A 10' X  $\frac{5}{8}$ " GROUND ROD SHALL BE INSTALLED IN THE CONCRETE PULL BOX FOR EACH POLE AND THE CONTROLLER. PAYMENT FOR THE GROUND ROD AND  $\frac{1}{2}$ " NMC SHALL BE INCLUDED IN ITEM 713 FOR SIGNAL POLES AND ITEM 701 FOR THE CONTROLLER. THE CONCRETE PULL BOX AND E.G.C. CONDUCTOR SHALL BE PAID FOR SEPARATELY.

ALL CONCRETE SHALL BE CLASS "S" WITH A MINIMUM 28 DAY COMPRESSIVE STRENGTH F'C=3500 PSI. CONCRETE SHALL BE POURED IN THE DRY AND ALL EXPOSED CORNERS CHAMFERED  $\frac{3}{4}$ " UNLESS NOTED OTHERWISE.

ALL REINFORCING STEEL SHALL CONFORM TO AASHTO M31OR M53, GRADE 40 (YIELD STRENGTH=40,000 PSI).



02-13-24	REVISED SPECIAL SIGN TO RIO-12a SIGN	
11-16-17	REVISED NOTES, ADDED SPAN WIRE SUPPORT POLE DETAIL AND HANDHOLE TERMINAL DETAIL	
02-27-14	REVISED NOTES.	
09-12-13	ISSUED AS STANDARD DRAWING	
07-21-11	REVISED PEDESTRIAN SIGN & GROUNDING	
05-21-09	REVISED GROUNDING	
09-10-08	REV. STEEL AIRCRAFT CABLE CONFIGURATION NOTE	
07-31-08	REVISED GROUNDING	
04-18-08	REVISED AASHTO NOTES	
04-17-08	REVISED TO 2001 AASHTO STANDARDS	
10-12-04	REV. CABINET ORIENTATION & SIGNAL OPERATION	
05-22-02	REVISED	
12-27-99	REVISED	
11-18-98	REVISION TO NOTES	
11-21-95	ISSUED	
DATE	REVISION	FILMED

ARKANSAS STATE HIGHWAY COMMISSION

SPAN WIRE ASSEMBLY  
STEEL POLE

STANDARD DRAWING SD-3