



# ANNUAL SEAUPG MEETING

## Leadership to Turn the Ship

Lorie Tudor, P.E.  
ARDOT Director

Paul Tinsley, P.E.  
ARDOT Materials Division Head

November 14, 2023





# THE NATURAL STATE



# ARDOT Quick Facts

- 3rd Largest State Agency
- Approximately 3,700 Employees
- Maintain 16,450 Highway Miles and More Than 7,000 Bridges
- Central Offices in Little Rock
- 10 Districts Statewide



# ASPHALT IN ARKANSAS



Awarded \$409 Million  
in Pavement  
Preservation Work in  
2023

96% of State  
Highway System  
is Asphalt

135,000 Tons of  
Asphalt Used for  
Maintenance  
Activities Per Year



What's a  
SEAPUG?



# SEAUPG MISSION

To improve the quality and performance of asphalt pavement applications by encouraging the adoption of the best practices in all aspects of asphalt technology including materials selection and testing, construction and maintenance procedures, and environmental protection.

The mission is accomplished by transferring knowledge and technology gained through research, education, and cooperative partnership with federal, state, and local agencies, material suppliers and contractors.

# SEAUPG MISSION

To improve the quality and performance of asphalt pavement applications by encouraging the adoption of the best practices in all aspects of asphalt technology including materials selection and testing, construction and maintenance procedures, and environmental protection.

The mission is accomplished by transferring knowledge and technology gained through research, education, and cooperative partnership with federal, state, and local agencies, material suppliers and contractors.



# ARDOT ASPHALT MISSION



PRODUCE  
AMAZING  
ASPHALT



PRODUCE  
AMAZING  
**ASPHALT**







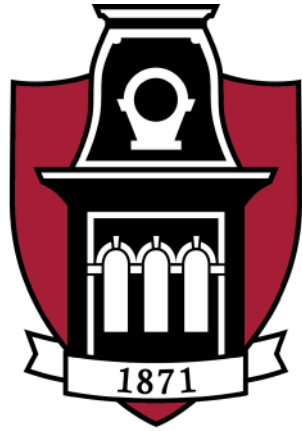
“The worst walls are never  
the ones you find in your way.  
The worst walls are the ones  
you put there.”

Ursula Le Guin

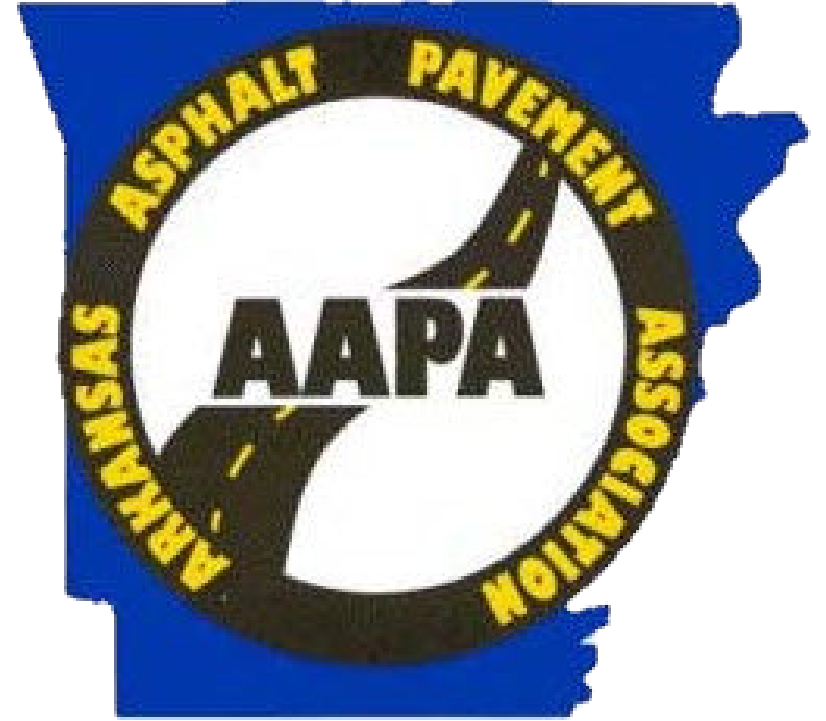




# Partnerships



UNIVERSITY OF  
ARKANSAS®





# Turning the Ship

## RAP QUALITY CONTROL

Tested as part of the field verification process.

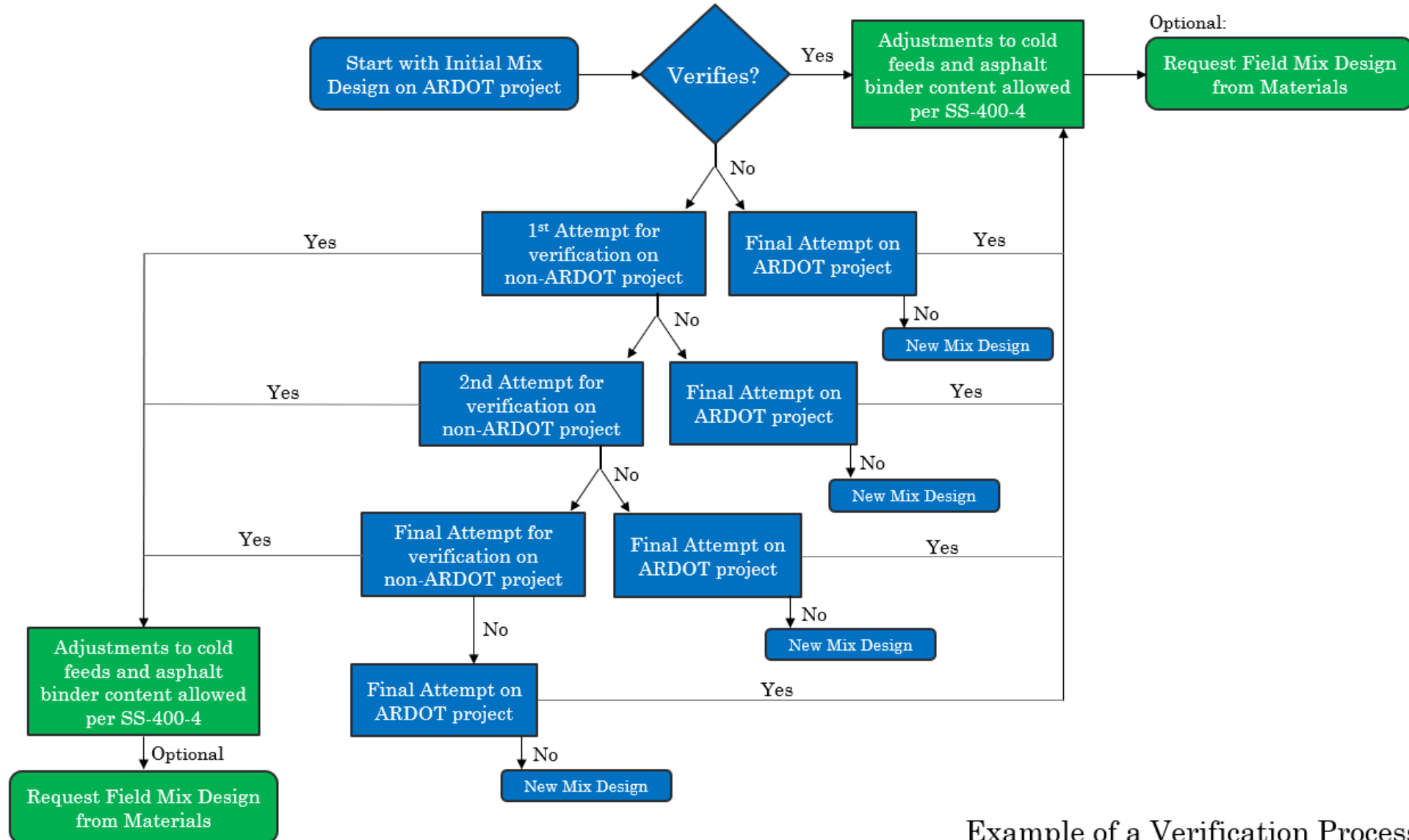


Minimum of one set of test per job for jobs that contain at least 1,000 tons of ACHM.

One set of tests for every 10,000 tons of asphalt mix produced.

The first tests on the job must be performed within the first 3 days of production on the job.

# Turning the Ship



Example of a Verification Process



# Turning the Ship

## Asphalt Laboratory Facility

SS-409-2

# Turning the Ship



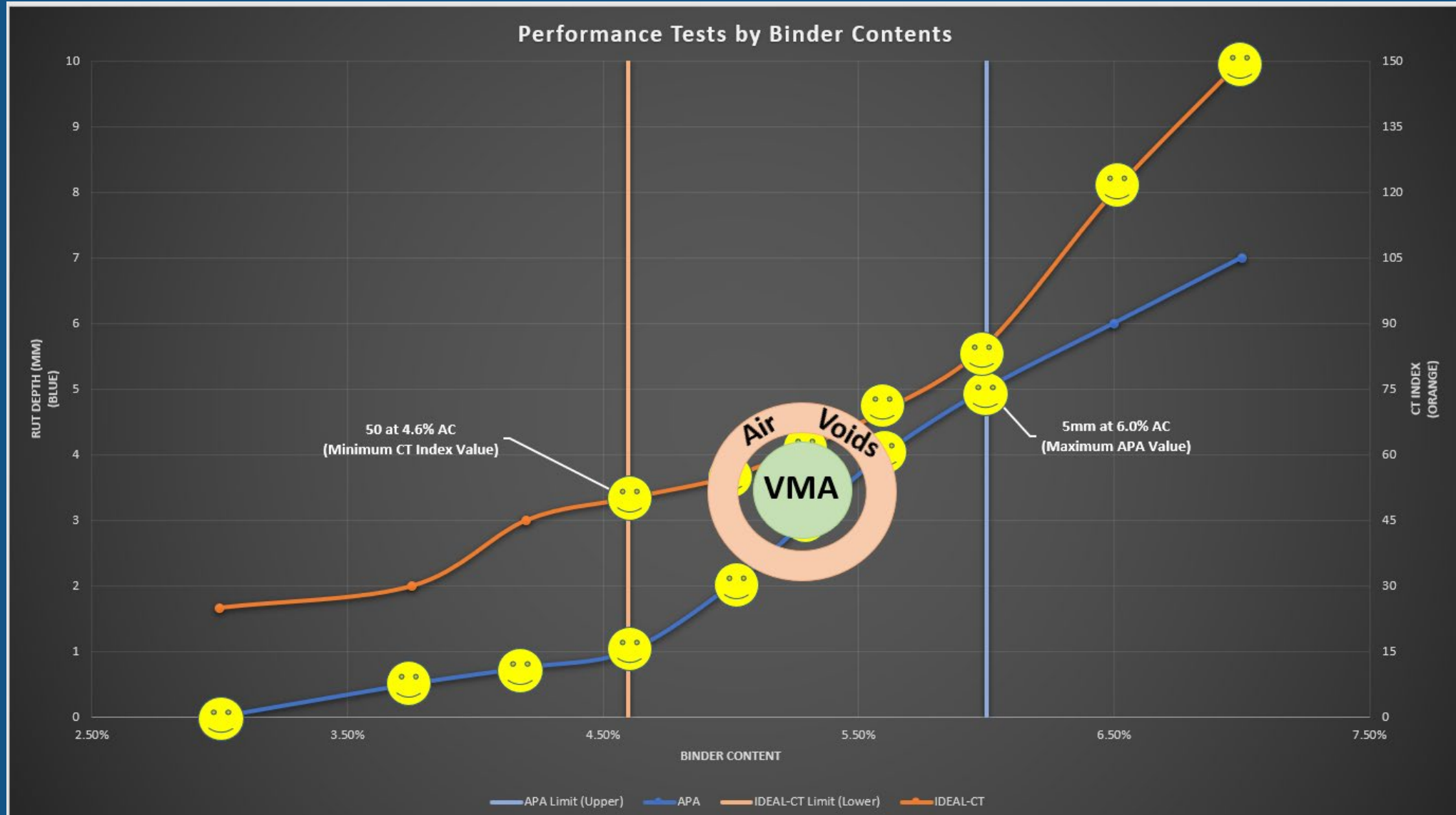


# Turning the Ship

## Field Mix Design

- Allows Contractor to start the verification process after a 120 days interruption of production at the adjusted cold feed settings.
- Contractor is allowed to adjust the field mix design providing the changes do not exceed 10% for a single cold feed or 20% overall from the initial mix design.
- Contractor is allowed a one-time field mix design to be approved by the Materials Engineer.

# Turning the Ship





# Turning the Ship



# Turning the Ship





Produce  
Amazing  
Asphalt





# ANNUAL SEAUPG MEETING

## Leadership to Turn the Ship

Lorie Tudor, P.E.  
ARDOT Director

Paul Tinsley, P.E.  
ARDOT Materials Division Head

November 14, 2023





*Wheel of*

FUN

START

THING

BALANCED  
MIX DESIGN

Time's  
Up!

BACK

NEXT



PERSON

A S P H A L T G U R U

B U Z Z P O W E L L

Time's  
Up!

BACK

NEXT



PHRASE

T U R N  
Y O U R S H I P

Time's  
Up!

BACK

NEXT



## BEFORE AND AFTER

ASPHALT

BINDER

PERCENT WITHIN

LIMITS

Time's  
Up!

BACK

NEXT



PHRASE

■ ■ W A I T I N G ■

■ ■ ■ O N ■ T H E ■ ■ ■

■ ■ ■ T A C K ■ T O ■ ■ ■ ■

■ ■ ■ ■ B R E A K ■ ■ ■ ■

Time's  
Up!

BACK

NEXT



PHRASE

L I N E A R

L A N D F I L L

Time's  
Up!

BACK

NEXT



# PHRASE

WE WILL

FIX IT ON

THE NEXT LIFT

Time's  
Up!

BACK

NEXT